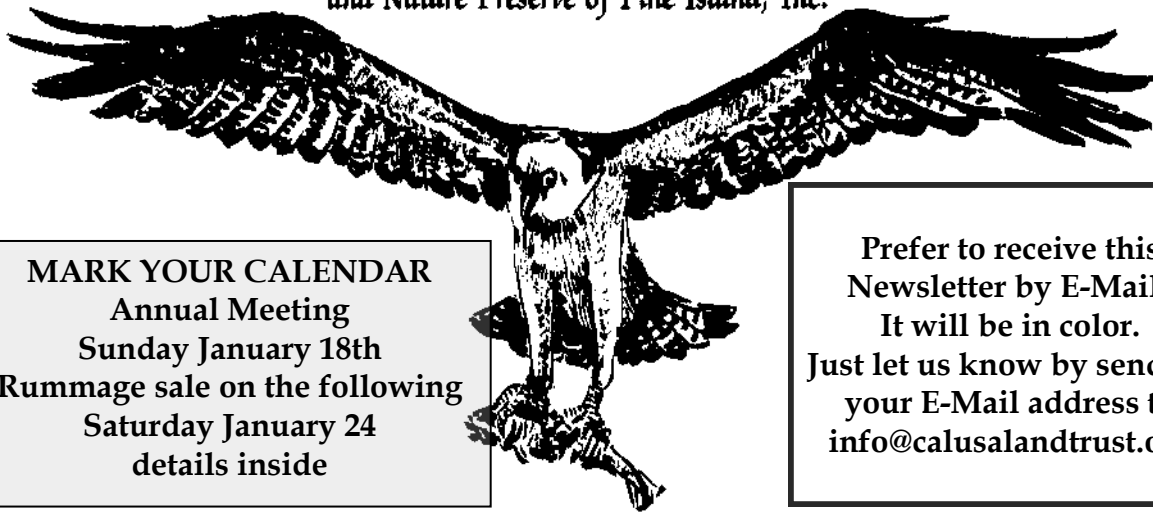


# Calusa Land Trust

and Nature Preserve of Pine Island, Inc.



**MARK YOUR CALENDAR**  
**Annual Meeting**  
**Sunday January 18th**  
**Rummage sale on the following**  
**Saturday January 24**  
**details inside**

**Prefer to receive this**  
**Newsletter by E-Mail?**  
**It will be in color.**  
**Just let us know by sending**  
**your E-Mail address to**  
**[info@calusalandtrust.org](mailto:info@calusalandtrust.org)**

**Newsletter #90**

**Founded 1976**

**January 2015**

**[www.calusalandtrust.org](http://www.calusalandtrust.org)**

## **Annual Meeting Notice**

**39th Annual Meeting of the  
Calusa Land Trust and Nature Preserve  
of Pine Island, Inc.**

- ◆ Sunday, January 18, 2015, 1:00 pm  
at Fritts Park
- ◆ Meeting includes review of 2014 and plans  
for 2015
- ◆ Election of four new board members
- ◆ Reelection of Board Members Ed Chapin,  
Joan Rosenberg, Rad Hazen, Cathy House,  
Sonny Koutsoutis and Ron Wesorick
- ◆ Luncheon offers deli and veggie sandwiches,  
fruits, salad, cookies, pop and bottled water
- ◆ Socialize with friends and perhaps win at the  
raffle
- ◆ Enjoy Frank Tuma's Island Music
- ◆ Bring friends and neighbors
- ◆ All are Welcome See ya' there!
- ◆ In case of inclement weather we will meet at  
Fishers of Men Lutheran Church

## **Nominating Committee**

During the year a few Board members chose to resign. Judy Ott was a Board member for many years. Judy created the "Treasures of the Trails" that have been part of this newsletter for many moons. Peter Simmons chose not to run for reelection to the Board for personal reasons. Peter has been a Board member for several years and his input at meetings was much appreciated. Peter was also our source for a golf cart that made a great auction item at one of our Duck Races. Pat Rooney is not standing for reelection. He and his wife Hope have moved to Fort Myers. They are long time CLT and Garden Club members. Pat has many different skills - all helpful. Cindy Bear also decided not to be reelected. Her many many duties at the Randell Research Center just do not allow enough time for her to sit on the CLT Board.

Ed Chapin took on the task of nominating committee chair and had four vacancies to fill this year. He has provided four candidates for the membership to vote upon at the Annual Meeting. Here are brief descriptions of each candidate in alphabetical order.

**Jaren Cernicky** A native of Pennsylvania, Jaren Cernicky received his bachelor's degree from the University of Missouri and retired from Boeing (Military Aircraft and Missiles Division) as a Business and Planning Analyst in 2001. Since then he and his wife, Jerry, have resided in St. Jude Harbors, where he serves as President of its HOA (which is an annual contributor to CLT.) During the summer months they enjoy RVing across the US in their motor home with their three cockatoo companions.

**Bill Hummer** Born and raised in Metuchen, New Jersey, Bill holds a Bachelor of Science degree in Mathematics from the University of Mass. at Lowell. In 1976 Bill moved to Boca Raton, Florida where he met his wife Debbie, also from New Jersey, and today their 3 children and 5 grandchildren keep them very busy.

Over the years Bill has served on a number of Boards for organizations that range from a large Fort Lauderdale yacht club to Home Owners Associations and the Bank and Trust company that acquired his company. He is currently a member of the Sons of the American Legion on Pine Island, the Pine Island Boat Club and the South West Florida Yacht Club.

**Gregory Lignelli** Born in Philadelphia, PA. He graduated from Villanova University with a Bachelor of Science. He received an MD degree from Temple University Medical School. He was a flight surgeon in the USN and practiced Neurological Surgery for 30 years in Pottstown and Reading, Pennsylvania.

His wife is Cindy and they have 3 children and 5 grandchildren. They have lived on Pine Island for six years. Greg's hobbies include golf, bonsai, biking and swimming.

**Peggy Lee McTeague** Always a creative soul, at age 6 or 7 she displayed her artistic abilities on her mother's walls. Her first work in the world of art was as a design and layout artist for a photography studio. She developed her photography talents into portrait photography before moving to Pine Island in 1979.

Originally from Pennsylvania, she grew up in the

mountains with the Appalachian Trail running thru her back yard.

In 1979 she moved to Florida and with all its natural beauty she was drawn to stained glass, woodworking, acrylics and watercolors. She became well known as the Hat Lady on the Art Show circuit. Using her interest in anthropology and archeology she made one of a kind hats with beautiful woven bands of leather, shell, bone and glass beads - beautiful wearable art.

She opened WildChild Art Gallery in 1999. And since has featured artists living on and around Pine Island and South West Florida. Now WildChild Gallery features over 120 Florida Artists. It has become more of a Cooperative Gallery as time has passed.

## From The Birds' Nest John Kendall, President

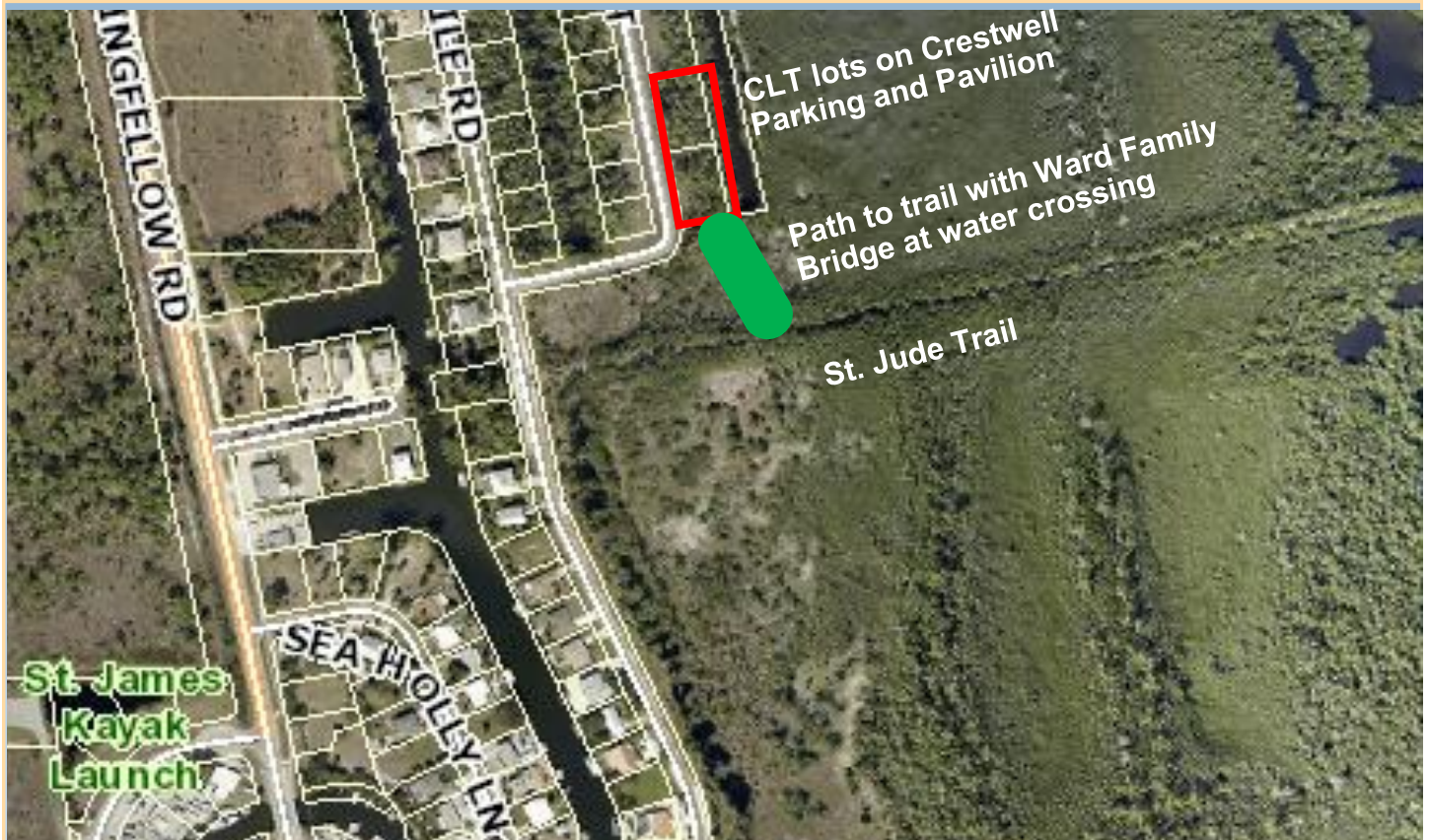


The Calusa Land Trust Board of Directors is striving to provide public friendly nature sites to supplement its traditional emphasis on mangrove wetlands, salt flats and pine uplands. This Birds' Nest article will concentrate on one such project.

The St. James Creek Preserve was acquired in two major steps. It now consists of some 394 acres of forever preserved wetlands. The St. Jude Nature Trail (initially designed as an extension of St. Jude Blvd. for access to new home sites) provides a half-mile walkway ending in a boardwalk leading to a Memorial Deck overlooking St. James Creek. The Trail includes a tiki hut and many inscribed benches. Some benches are located at the entrance on Stabile Rd. known as the Norm Gowan Trailhead Vista and others are scattered along the Trail. There are no amenities and very limited parking in the County right-of-way.

The Smith/Dewane Gateway was imagined with a recent combination gift and bargain sale acquisition of over 300 feet of frontage on Crestwell Rd. Since these parcels are contiguous to the existing preserve, they will allow a new access to the St. Jude Nature Trail. The Pine Island Garden Club and the Matlacha Hookers have pledged funds which should cover most of the cost of construction of a parking





area and a covered pavilion. However, the removal of tall nasty Australian pines must take place first. After research, the bid for this work was accepted from native Pine Islander John Jones of Blue Heron Environmental who discounted its fee for the CLT. The cost will be paid from our general funds and the work has already begun.

The next step is to create access to the St. Jude Trail from the new Gateway. This will be a pathway to a boardwalk and then onto a bridge over an often flooded mangrove ditch and thence to the existing St. Jude Trail. Note that the ditch was caused by dredging to create a roadbed back in the 1960s. This will be the most expensive piece of the project's puzzle. A great solution occurred when the family of the late Dennis and Ruth Ward (longtime CLT supporters and avid "bridge" players) pledged the funds necessary to build the bridge and complete this dream.

When exotic removal and land grading is complete, we will acquire engineering specifications and permitting from Lee County and the South Florida Water Management District. The bidding process will follow before construction will begin. Once completed the Smith/Dewane Gateway, the Pine Island Garden Club/Matlacha Hookers Pavilion and

the Dennis and Ruth Ward Memorial Bridge will provide Pine Islanders with an opportunity for families to interact with this fragile subtropical island environment which is so special to all of us.

On behalf of the Calusa Land Trust I offer you the best of the holiday season and a most prosperous new year.

## Great Calusa Duck Race by John Kendall

Grab your iPad, tablet or wall calendar and mark the date. This year's Great Calusa Rubber Duck Race will be on Saturday March 7, 2015. This is your chance to win big and to give big to your Calusa Land Trust.

3000 rubber ducks are in training now. Buy Duck tickets at [www.calusalandtrust.org](http://www.calusalandtrust.org) or from our duck ticket sellers wherever you find them. As always the race will be held on the canal behind Woody's Waterside in St. James City. Last year's race was a fantastic success raising just about \$30,000 for the Land Trust.

It takes a lot of volunteers to put on the Duck Race so if you can and want to help let John know.

His number is 239.283.8175

E-mail him at [john@calusalandtrust.org](mailto:john@calusalandtrust.org)

They're off and paddling.



# Acquisition Committee

## by Rad Hazen

I am the relatively new chairman of the Acquisition Committee. The previous chair and CLT past president, Harold Bruner, has moved to his new home in Alabama leaving tough shoes to fill.

It is pleasing to have a very active and supportive committee to assist in deciding what properties to place in preservation and how best to achieve our goals. They are Ed Chapin, Cathy House, Cindy Bear and Harry Piper. Our philosophy has been to place a somewhat greater emphasis on obtaining more upland preserves while property values are relatively depressed. To this end, we just closed on a very unique (for Pine Island), ten acre parcel located on Barrancas Avenue which we have named the Darrell and Linda Barron Preserve in honor of its previous owners. This property has good elevation to the south and transitions to wetlands and mangroves to the north. The scrub area has Chapman Oak, Myrtle Oak and a number of other plants associated with a scrub environment. It is also home to a large population of Gopher Tortoises and hopefully, Indigo Snakes. It is rumored that there was a Scrub Jay population on this site in the past but they are no longer present. Our plan is to remove the exotic plant species which are primarily in the transition zone between scrub and mangroves and replace them with natives. We will then create a hiking path for everyone to enjoy, similar to the Saint Jude Trail located in Saint James City. It is our goal to provide a learning experience on this site to familiarize visitors with the scrub environment. Watch for news of work parties as there will be a lot of initial projects at this property and Ranger Ed will need your help.

There are several likely acquisitions in the works which John Kendall mentioned in his article last month. Some of these are gifts but some will require a monetary commitment both for property and infrastructure. Please remember that we need your financial support to preserve Pine Island. We may never have a better opportunity to purchase upland parcels, so consider a generous gift this season to your Calusa Land Trust.



## Ranger Report

by Ed Chapin

Work Party report. On Saturday October 11 we had 5 CLT Volunteers working with Bob Reopening of Lee County Parks and Recreation on the Eagle Preserve just south of the St. James City Post Office. This is an ongoing commitment to help co-manage with Lee County Preserves that the CLT has contributed money to help purchase. As usual we worked on Invasive Exotic Plant Control (IEC). On Saturday November 8 we had 8 CLT Volunteers working on the Lee County Pine Island Flatwoods Preserve. Once again we were working on IEC. To our pleasant surprise we had to look hard to find any invasive plants. On Saturday December 13 we had our first Work Party at our new Barron Preserve. It is located at the corner of Barrancas and Aura Lane in Bokeelia. At just under 10 acres, about half of this preserve is healthy mangroves and the other half is rare scrub habitat that transcends into Pine Flatwoods. There are a lot of invasive plants on this preserve and we will be working to restore this rare habitat. With a near record turn out of 22 CLT Volunteers we got a good start on clearing debris and removing unwanted plants. My thanks to all the Volunteers who came out and helped us maintain and enhance our new preserve.

## Upcoming Work Parties

Saturday January 10 we will be at Fritts Park to set up for the Annual Meeting set for Sunday January 18. The annual rummage sale will be on the following Saturday January 24. We will need volunteers at Fritts on Friday January 23 after noon to accept items brought for the rummage sale.

We will need volunteers for these events and also any quality used items for the rummage sale. We ask that you hold items until Friday January 23 then bring them to Fritts Park for sorting and tagging.

On the second Saturday in February, the 14th we will be working at the Dobbs Preserve on Sabal Avenue near Tropical Point. On Saturday March 14 we will be at the new Barron Preserve on Barrancas.

## Peter Ordway

### Mangrove Adventures

Our First Paddle of the 2014-2015 season was on Sunday October 28. Our destination was Fisheating Creek near Palmdale on Highway 27. This is a wonderful Cypress lined Black water Creek with lots of wildlife. There were 6 paddlers and we had great weather. We saw many gators and birds. The second paddle to the Calusa Island Preserve was changed from November 2 to November 30 due to bad weather. I had 5 Paddlers that day and fine weather. I also gave a tour of the shell mound on this site. It dates back to about 800 BC.

Future Peter Ordway Mangrove Adventures will be on:

Sunday February 1 Kreie Preserve  
Sunday February 22 Peterson Preserve  
Sunday March 22 Big Jim Creek Preserve  
For more information call  
Ed Chapin at 239.218.7531.

If you would like to be notified of upcoming work parties or paddles send an E-Mail to me at [ECalusaEd@CalusaLandTrust.org](mailto:ECalusaEd@CalusaLandTrust.org) and your name will be added to the list. Call me anytime for more information or paddling reservations. My cell is 239.218.7531.

## Spread the Calusa Land Trust word

Proudly display a Calusa Land Trust garden sign or front license plate. Available wherever Calusa Clothesline is setup. Each sells for \$25 and all of the profit goes to the CLT.





## Treasures of the Trails for January 2015

### Rudolph Seen at St. Jude Nature Trail!

By Judy Ott



Perhaps enjoying some pre-flight tranquility, Rudolph the Red Nosed Reindeer was recently seen resting quietly in the underbrush along the St. Jude Nature Trail. White tailed deer (*Odocoileus virginianus*) are very rare on Pine Island and haven't been recorded for several decades, probably due to over hunting during the Great Depression. Pine Island has plenty of food that deer like (young plants, shrub tips, acorns and grasses) but not enough freshwater to drink.



Our Rudolph's antlers and face are made from the fallen boot of a Cabbage Palm (*Sabal palmetto*). Cabbage Palms are common on Pine Island and provide many benefits, such as: fruit enjoyed by birds, squirrels, raccoons, deer and bears, habitat for frogs and bats, nesting material for birds, flowers for bees and butterflies, and "heart of palm" for people. The fronds are used to make thatch, and in the past the trees were used for nets,

baskets, paddles, arrows, ball sticks and house poles.



Rudolph's eyes are made from the Buttonwood (*Conocarpus erectus*) cone-like fruits.

Buttonwoods are often found with red, white and black mangroves at the upper edge of the tide, but aren't "true" mangroves because they have different types of root and reproductive systems than the other mangroves.



Rudolph's red nose is a fresh new Cocoplum leaf just opening up at the tip of a branch. Cocoplum fruit ripens in the fall and are a favorite food of gopher tortoise, raccoons, birds and some people who make jams from them – by adding a lot of sugar and cinnamon. Native Americans used parts of the Cocoplum for food, arrows, medicine, teas, dyes and candles. The "glue" used to hold our Rudolph's face together is mangrove mud from water's edge. St. Jude Trail is the jewel of the CLT Norm Gown Trailhead Vista Preserve just north of St. James City, east of Stringfellow Road in St Jude Harbor on Stabile Road. So when you're in search of a peaceful time-out from the holiday bustle, take a walk along the St. Jude Trail, listen to the quiet and watch for Rudolph.



Do you shop online at Amazon?

If you do, next time go to

[www.smile.amazon.com](http://www.smile.amazon.com)

Then select the Calusa Land Trust as your charity of choice.

Amazon will donate 0.5% of your purchases to the Calusa Land Trust.

\_\_\_\_\_ \$ 25 Basic Member  
\_\_\_\_\_ \$ 50 Donor  
\_\_\_\_\_ \$100 Contributor

\_\_\_\_\_ \$500 Patron  
\_\_\_\_\_ \$1000 Benefactor  
\$\_\_\_\_\_ Other Amount

**Mail to:**  
**Calusa Land Trust**  
**PO Box 216**  
**Bokeelia, FL 33922**

**CREDIT CARD #:** \_\_\_\_\_ **Visa or MasterCard only**

--	--	--	--

**EXPIRES:** \_\_\_\_\_/\_\_\_\_\_/\_\_\_\_\_ **Security Code** \_\_\_\_\_

Your Name: \_\_\_\_\_

E-Mail: \_\_\_\_\_

Address: \_\_\_\_\_

City, State, Zip: \_\_\_\_\_

Phone: \_\_\_\_\_ Alt Phone \_\_\_\_\_

How do you want to  
receive your  
Newsletter?

☐ US Mail  
☐ E-Mail

"A COPY OF THE OFFICIAL REGISTRATION AND FINANCIAL INFORMATION MAY BE OBTAINED FROM THE DIVISION OF CONSUMER SERVICES BY CALLING 800-435-7352 TOLL-FREE WITHIN THE STATE. REGISTRATION DOES NOT IMPLY ENDORSEMENT, APPROVAL, OR RECOMMENDATION BY THE STATE."

Full financial details, including federal tax returns, can be obtained by contacting the Land Trust's Treasurer at (239) 283-3871 during working hours. Federal Employer Identification Number: **59-1782265**. The Calusa Land Trust is an exempt Organization under section **501(c)(3)** of the IRS code. Florida Dept. of Agriculture & Consumer Services registration number **CH3439**. No portion of donations received by the Trust is paid to any professional solicitor. 100% of all donations are received by the Trust.

January 2015

## Work Parties – Everyone Welcome

They are on the second Saturday of each month except August.

9:00am to Noon We need your help.

January 10, 2015	Fritts Park, Beach Daisy Lane, Bokeelia
February 14 2015	Dobbs Preserve Sabal Ave near Citrus St, SJC
March 14 2015	Barron Preserve Barrancas at Aura Lane

Future work parties, check with Ranger Ed 239.218.7531



## Corporate Gift Matching Programs

Many larger corporations have programs where they will match employee donations to eligible charities. The Calusa Land Trust qualifies for these matching contributions. If you are an employee or retiree of one of these corporations, remember to follow up and ask for the matching gifts for your recent and future donations. This is a great way to augment your charitable giving and make a significant impact on CLT funds.

Calusa Land Trust & Nature Preserve  
of Pine Island, Inc.  
P.O. Box 216  
Bokeelia, Florida 33922



Annual Meeting  
Sunday January  
18th

PINK  
ADDRESS  
LABEL? TIME  
TO RENEW.

Calusa Land Trust  
Alison Ackerman Annual Rummage Sale  
Saturday January 24

Each year the Calusa Land Trust puts on a rummage sale to raise funds for purchases of land on Pine Island.

This is another way for you to help your Land Trust.

Bring items that can be resold to our Fritts Park at the West end of Beach Daisy Lane in Bokeelia. Volunteers will be there on Friday January 23 after noon to accept your items.

The sale will be the next day, Saturday.

If you wish to help stop by the Park on Friday or Saturday.

