

To: [REDACTED]
From: Juki Americas
From Email: [REDACTED]
Subject: Selective Soldering Solutions: Excellent flexibility for through-hole applications.
Preheader: High-end production at an affordable price point!

JUKI

JUKI Smart Solutions



Leading Total Line Solutions Provider

*Smart. Fast. Modular.*

Selective Soldering



SOLDERING SOLUTIONS

Juki's line of low cost selective soldering systems offer excellent flexibility for through-hole applications. The lower cost and smaller footprint of our machines, combined with lead-free capabilities, provide high-end production at an affordable price point.

Cube 460

This unique batch platform offers excellent flexibility for through-hole applications. The lower cost and smaller footprint utilizes the same soldering technology found on Juki's larger platforms while offering a superior ROI of 6-12 months.



SOLDERING



Cube 460 Principal Characteristics:

- 460mm x 460mm PCB size (18" x 18")
- 0 or 7 degree soldering
- Quick Change Nozzle
- Exchangeable Solder Pots
- Automatic Nozzle Cleaning
- Quick Programming - less than 10 minutes

JUKI®



Universal PCB carrier



High performance preheat



Solder pot trolley system

[DOWNLOAD BROCHURE](#)

iCube

High quality, flexibility and reliability offered in a complete all-in-one package is what you get with the inline iCube Selective Soldering System.



SOLDERING



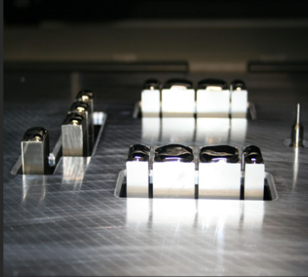
iCube Principal Characteristics:

- 510 mm x 460 mm PCB Size (20" x 18") Standard - 610 mm x 610 mm XL PCB Size
- Long Board option available
- Quick change nozzle
- Exchangeable Solder pots
- Available Active Flow soldering
- Expandable to meet growing production requirements

JUKI®**Nozzle Cleaning****Quick Change Nozzles****Wave Height Control****DOWNLOAD BROCHURE**

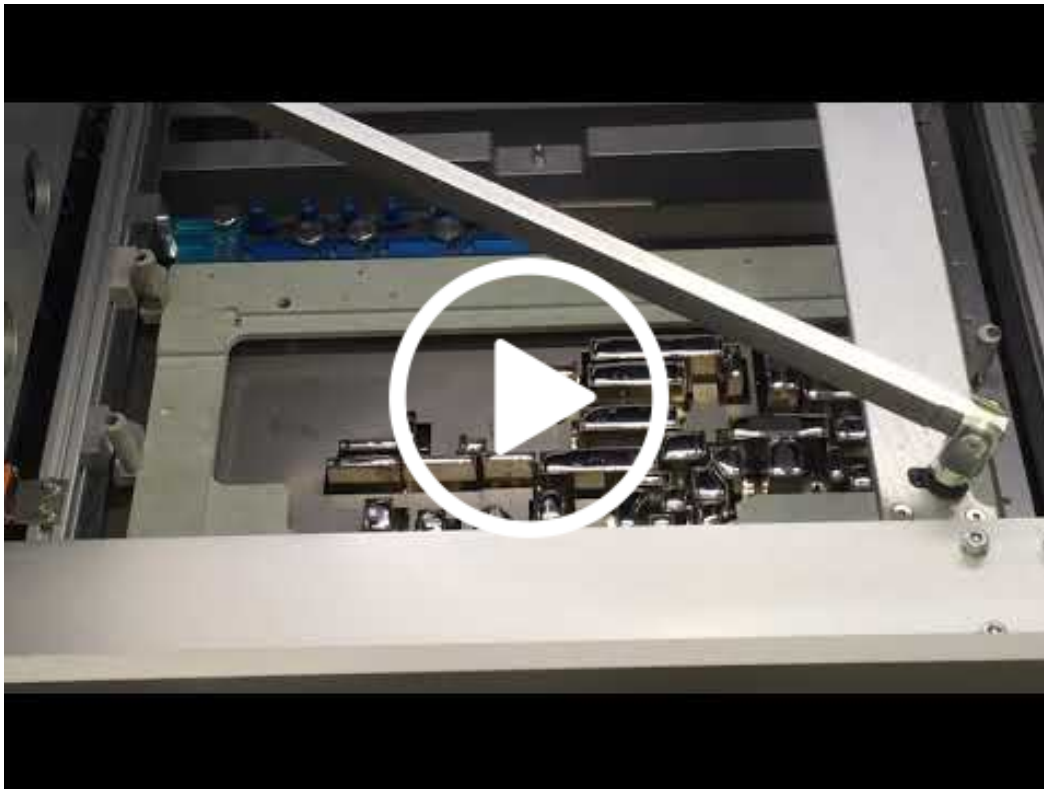
ActiveFlow

Like our volumetric soldering stamps, ActiveFlow allows for a higher energy transfer between the tightest component clearances. Circulation and draining of the soldering within our ActiveFlow stamp design are unique.

**SOLDERING**

The ActiveFlow system is available in our FlexSolder system as well as our iCube system. The iCube ActiveFlow system also allows for the potential for hybrid systems with standard point to point soldering available in the same system as the stamp. This would allow flexibility to run multiples programs without requiring a tooling change.

- Solderable area up to 400mm x 400mm
- Quick and accurate tool changes
- Real-time wave height control
- Cycle times of less than 30 seconds are easily achievable

JUKI®[VISIT OUR WEBSITE](#)**Address/Locations**



Juki Americas Headquarters

5151 McCrimmon Parkway, Suite 200
Morrisville, NC 27560
Phone: 919-460-0111
Fax: 919-469-0480
www.jukiamericas.com



California Office

412 Kato Terrace
Fremont, CA 94539
Phone: 510-249-6700
Fax: 510-249-6710
www.jukiamericas.com

Follow Us!



This email is intended for carlos.eijansantos@juki.com.

[Update your preferences](#) or [Unsubscribe](#)

delivered by
 Campaigner