



PREMIER ISSUE

Continuing & Community **EDUCATION**

Online Non-Credit Courses • Youth Programs • Personal & Professional Enrichment

Spring/Summer
2020
CLASS SCHEDULE

WEB VERSION
Click on Class Name to Register!

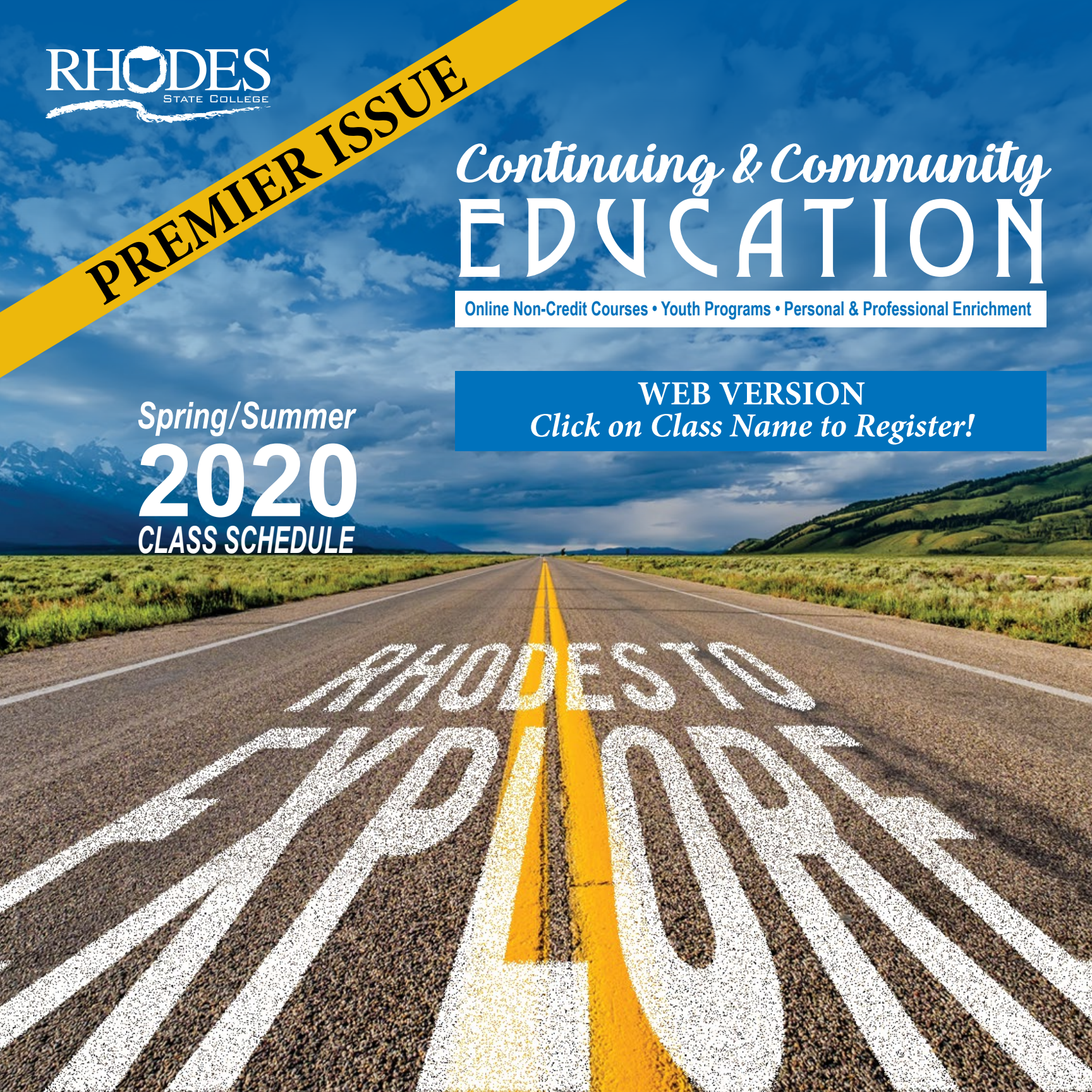


TABLE of CONTENTS

January	4
Travel Presentation Night - Discover Northern Italy and Its Lakes	
March	4
Creative Writing and Literature	
Cyber Security for Everyone	
Hatha Yoga 101	
Thought You Knew the BREW and Smoothies, too?	
April	5-6
Wine Tasting & Learning	
Making Sense of Common Scents	
Good, Better, Best-Living Healthy Simplified	
Online Selling	
Lima Symphony presents: Spaceships, Aliens, and Other Weird Creatures	
May	8
Garden Concrete Mosaic Stepping Stones - My Adult and Me	
June	9
The Fine Art of Mobile Photography	
July	9
Succulent Cupcake Decorating	
Computer Literacy	
August	10
Make the Most of Fresh Summer Produce	
Hand-sewing Woodland Animal Plushie - My Adult and Me	
Autumn Wreath Making	
Hatha Yoga 101	
September	12
Travel with Collette Tours - Discover Northern Italy and Its Lakes	
Registration	13-14
Campus Map	15



"Rhodes to Explore"



Welcome Letter

Rhodes State College is thrilled to introduce you to our "Rhodes to Explore" opportunities. These interactive classes will allow you to gain a new skill, learn a new hobby, or create meaningful memories for you and your family. Many of these classes will fill up quickly, so don't wait to register. If you have any questions about these courses or how to register, our contact information is below. Also, be on the lookout for our Fall and Winter offerings to be announced in June of 2020. Until then, we invite you to discover your "Rhodes to Explore."

A handwritten signature in black ink, reading "Heather Seddlemeyer". The signature is fluid and cursive, with the first name "Heather" and last name "Seddlemeyer" clearly legible.

Heather Seddlemeyer
Coordinator, Continuing & Community Education
Keese Hall (KH) 143
(419) 995-8464
Seddlemeyer.H@RhodesState.edu



JANUARY

Rhodes State College and Collette Tours

bring you the trip of a lifetime
on September 23rd, 2020!

Discover Northern Italy and Its Lakes

Don't miss the...**TRAVEL
PRESENTATION NIGHT @**

Rhodes State College
January 14, 2020
6:00-8:00pm
Keese Hall Room 120

It will be a wonderful opportunity for
travelers to hear about trip highlights
and the great travel features being
offered by Collette in this fabulous
trip to *Discover Northern Italy and
Its Lakes*



MARCH



Creative Writing and Literature

#PE001-202003

Join us to awaken your inner writer! This six session, workshop-style class will involve creative writing students in the genres of poetry, short story, theater, and the novel. Write in the genre or genres of choice and receive feedback from students and instructor. The works by such writers as Flannery O'Connor, Ernest Hemingway, Emily Dickinson, Sylvia Plath, Judith Guest, Beth Henley, and John Berryman will be used as teaching examples and writing inspiration.

Instructors-Sean Lause, RSC faculty

KH 120

6:00-8:00pm

Tuesdays

3/10, 3/24, 4/7, 4/21, 5/5, 5/19

\$49.00

Cyber Security for Everyone

#PE002-202003

Learn the principles and practices that all computer users need to keep themselves safe, both at work and at home. By presenting best practices along with a small amount of theory, trainees are taught both what to do and why to do it. Topics covered include; how to recognize spam and phishing e-mails, how to check for valid internet links, recognizing deceptive web sites, how to recognize social engineering attempts, best practices for securing your home wireless, and how to safely use open Wi-Fi connections.

Instructor-Steve Stiles, RSC faculty

KH 220

6:00-8:00pm

Mondays

3/30, 4/6

\$39.00

Hatha Yoga 101

#PE003-202003

Have you always wanted to try yoga or are you already comfortable with YOGA and want a change of scenery? Join us for our eight class series. Class will begin with breathing techniques and stretching then will move through basic poses to finish with stretching and relaxation. By the end of the 8-weeks class, the group will be onto more advanced yoga. The instructor will properly assess to provide modifications as well as advancements. Participants will need a yoga mat.

Instructor-Diann Seech, The Yoga Tree

KH MPC

6:00-7:00pm

Tuesdays

3/24, 3/31, 4/7, 4/14, 4/21, 4/28, 5/5, 5/12

\$49.00

Thought you knew the BREW and Smoothies, too?

#PE004-202003

Taste test, anyone? You will EXPLORE the art of coffee brewing. Learn how to brew three different ways: Cold Brew, Pour-over, and French Press. You will sample four different types of coffees and discover how to identify the subtle flavors in coffee-just like the professionals! Participants will engage in the preparation of healthy smoothie making while learning what ingredients make excellent combinations.

Instructor-Jennifer Brogee, The Meeting Place

KH MPC

6:00-8:00pm

Wednesday

3/25

\$39.00

APRIL

Wine Tasting & Learning: The MET

#PE005-202004

Allow your taste buds to be transformed through exquisite wines paired with delectable food made by our Executive Chef, Chef Lauren. Owner of The Met, Rob Nelson, and his family have traveled great lengths to learn the art of wine-making and tasting. He has brought a few of those delectables back to Lima! Rob has taught Met employees, who have been gracious enough to come and pass along their knowledge of wines to you! A description of each wine, based on taste, smell, and key facts, will be given as your mouth waters with each pairing. Participants must be 21 years of age or older.

KH MPC 6:00-8:00pm Wednesday 4/1 \$59.00

Making Sense of Common Scents

#PE006-202004

Are you intrigued by the world of essential oils? Do you know the safety of essential oils? Feed your curiosity; learn the essentials of aromatherapy. Explore what perfumers use as addition choices (base, middle, and top note scents) to make their specific scent blends. Participants will customize their own aromatherapy personal care items with essential oil choices and herbs to take home.

Instructor-Lori Osterloh-Hagaman, The Herbchick LLC

KH 120 6:00-8:00pm Thursday 4/2 \$39.00

Good, Better, Best-Living Healthy Simplified

#PE007-202004

Now is your chance to get on track towards a healthy way of living. Come and learn how to navigate the very confusing nutrition space for living your healthiest, BEST life. EXPLORE what is “**Good-Better-Best**” in proteins, veggies, fruits, and grains. We will also evaluate the “**Good-Better-Best**” of snacks and meals you already love to enjoy a balanced lifestyle without major restrictions. How to eat in balance and how to read labels will also be simplified for you.

Instructor-Sara Cardone, Reset with Sara

KH 120 6:00-7:30 pm Monday 4/13, 4/20 \$39.00

Online Selling

#PE008-202004

ETSY, eBay, Amazon, or even FB Marketplace? You have potential cash just sitting around your house right NOW! Let's turn it into some green for you, and learn the trade of online selling. Let's get you ready to sell effectively and efficiently. Participants need an eBay account before class starts.

Instructor-Sylvia Sargent, RSC Staff

KH 220 6:00-8:00pm Thursday 4/16, 4/23 \$39.00





Rhodes State College now offers Online Courses through a partnership with ed2go!

Online learning for your...
"on the go" lifestyle!

CAREER TRAINING - *Example of course offerings*

Certified Administrative Professional

In this course, you will learn the basics of workplace administration as well as how to begin and grow a successful career as an administrative professional. The course covers the intricacies of organizational communication, office and records management, and human resources fundamentals among other topics. You will also learn to effectively write for business, produce documents, and utilize informational technology. You'll gain event and project management skills which include virtual meeting coordination. This course includes a voucher that covers the fee of the exam.

INSTRUCTOR-LED COURSES - *Example of course offerings*

Microsoft Excel 2016 Series

Each course within the Excel Series will build upon the last, giving you expert knowledge in navigating and using the software. Introduction to Microsoft Excel 2016, Intermediate Microsoft Excel 2016 and Advanced Microsoft Excel 2016 will be offered.

SELF-PACED TUTORIALS - *Example of course offerings*

Speed Spanish Series

Imagine yourself speaking, reading, and writing Spanish. This course is designed for anyone who wants to learn Spanish pronto. You will learn six easy recipes for gluing Spanish words together to form sentences. In no time at all, you will be able to go into any Spanish speaking situation and converse in Spanish.

For full details and course offerings, visit
RhodesState.edu/ContinuingEd

THREE TYPES OF COURSEWORK

Career Training Programs

Prepare for industry certification or start a new career
Start anytime
Many programs completed in less than six months
In-depth study, all learning materials provided
Personal instructor assistance
Certificate of completion awarded with passing score

Instructor-Led Courses

Professional development and personal enrichment
Sessions start monthly
Convenient six-week format
Interactive learning environment
Instructors lead each course
Award of completion with passing score

Self-Paced Tutorials

Build skills or earn continuing education credits
Start anytime
Most tutorials completed in a few hours
Quick self-study on demand
Supported independent study
Certificate of completion awarded with passing score

RANGE OF COURSE TOPICS

Accounting & Finance	Healthcare & Medical
Business	Language & Arts
College Readiness	Law & Legal
Computer	Personal Development
Applications	Teaching & Education
Design &	Technology
Composition	Writing & Publishing

APRIL

Lima Symphony Orchestra: Spaceships, Aliens, and Other Weird Creatures #PE009-202004

Come LISTEN and LEARN from the Lima Symphony Orchestra! Be amazed as a violin, viola, cello, string bass, and a flute change your mind about orchestra music! The program will be loaded with popular orchestra songs you never knew you knew. Fun for all ages!

Instructors – Lima Symphony Orchestra

KH MPC 10:00am-12:00pm Sat 4/25 \$19.00/Family



RHODES STATE
RHODESOLOGY
SUMMER CAMPS

SUMMER 2020

WE ARE PLEASED
TO BE OFFERING
OUR RHODESOLOGY
SUMMER CAMPS
ONCE AGAIN.
CAMPERS WILL BE
ABLE TO CHOOSE
FROM AND ENJOY
CAMPS FOCUSED
ON PHOTOGRAPHY,
SCIENCE, ARTS,
MANUFACTURING,
CSI, ROBOTS,
AND MUCH MORE.
LOOK FOR MORE
INFORMATION ON
RHODESOLOGY
SUMMER CAMPS IN
JANUARY 2020.

MAY

Garden Concrete Mosaic Stepping Stones - My Adult and Me #PE0010-202004

A one-on-one activity with your favorite adult that will make lifelong memories as you create a custom-made, concrete garden stepping stone. Design your garden stone layout, and select from our wide array of stone embellishments. Choose hand prints, footprints, names, mosaic designs or all of the above! Instructors will assist in the design creation and adhering the materials to your stone. These hand-crafted pieces will be a great addition to your garden or walkway or can even be displayed inside your home. Age 3 and up. One child per participating adult.

Instructor – Lisa Foust, LimaBean Art Studio

KH 120 5:30-7:30 pm Wednesday 5/13 \$49.00



DON'T MISS OUT...
Classes fill quickly, REGISTER EARLY!

Visit RhodesState.edu/ContinuingEd and
choose "Personal and Professional Enrichment."
Follow instructions for class registration.



*Customized training gives you the flexibility you are looking for in your company.
Let Rhodes State College provide training that meets your expectations.*

Working with Rhodes State College you will:

- Choose the time and place you want the training
- Have access to instructors who have years of real-world experience and knowledge
- Receive a cost-effective company-focused training
- Obtain **Rhodes State College** certificates or industry recognized credentials

Popular customized training:

- ISO 9001:2015 Internal Auditor
- Internal Audits
- Computer Training
- Math for the Workplace
- Safety Training
- IATF 16949 Training
- Lean, Yellow Belt, Green Belt Training

Questions?

Tammy Eilerman

Director, Advanced Manufacturing Initiatives

Rhodes State College

Workforce Development and Innovation, KH 141

(419) 995-8351

Eilerman.T@RhodesState.edu

JUNE



The Fine Art of Mobile Photography

#PE0011-202004

Go beyond the selfie, and learn how to transform your smartphone into a high-quality digital camera. Class participants will be provided with a cell phone camera lens kit, and learn how each lens functions. Participants will learn about digital photography as a visual art practice and how to become an engaging and active photographer. Explore various aesthetic concepts and photography techniques while utilizing smartphone cameras and free photography editing apps. **BONUS**-Your photograph will be included in a photography exhibition on the Rhodes State campus.

Instructor- Brian Krawetzke, Shawnee High School Arts Teacher

KH 220

6:00-8:00pm

Wednesday

\$49

6/10, 6/17, 6/24, 7/1

JULY

Succulent Cupcake Decorating

Monday 7/13 #PE0012-202101

Thursday 7/16 #PE0013-202101

Come and learn the secrets of beautiful cupcake decorating. In this class, you will learn to make vanilla buttercream frosting from scratch, and use it to decorate 6 cupcakes in a succulent theme. You will learn several different methods of piping and how to shade color for a realistic look. You will come away from the class with six decorated cupcakes, a small set of succulent piping tips, and the knowledge to do it again at home.

Instructor-Sara Anderson, Sara's Sweets

KH 120 6:00-8:00pm 7/13 OR 7/16 \$49.00

Computer Literacy #PE0014-202101

Are you confused about computer technology and feel a bit left behind in the computer culture? Does calling technical support fill you with dread...Twitter, Facebook, and LinkedIn...Oh my! This class will introduce you to the fundamental concepts and operations necessary to use computers. Emphasis is placed on basic functions and familiarity with computer use. Topics include: computer technology, introduction to the windows environment, introduction to networking, and introduction to social media.

Instructor-Alex Busacca, Comm Net

KH 220 6:00-8:00pm Thursday
7/23, 7/30, 8/6, 8/13 \$39.00



Procurement Technical Assistance Centers

Consulting. Connecting. Contracting.

Helping businesses GROW their bottom line by winning government contracts!

PTAC matches local business with contract opportunities, helps with bids, navigates requirements, and assists clients with winning contracts at no cost.

Register today at ptac.rhodesstate.edu

AUGUST

Make the Most of Fresh Summer Produce #PE0015-202101

Learn new combinations of fresh summer produce, pairings you've never thought would work! See combinations that present an exciting party on your salad plate and palate. Taste how putting good nutrition into a wrap can be fabulous.

Instructor-Ruth Ann Stover, The Meeting Place

KH MPC 6:00-8:00pm Monday 8/3 \$39.00



Hand-sewing-Woodland Animal Plushie - My Adult and Me #PE0016-202101

Does your child, grandchild, or younger sibling love to sew? Has he/she expressed an interest in learning to sew? Have fun sewing a stuffed felt FOX, HEDGEHOG or DEER plushie while learning basic hand-sewing stitches. This class is perfect for any experience level. What a great way to make memories! Ages 5 and up. One child per participating adult.

Instructor - Lisa Foust, LimaBean Art Studio

KH 120 5:30-8:00 pm Wednesday 8/5 \$39/adult & child combo



Autumn Wreath Making #PE0017-202101

Join us for an evening of creativity making an eye-catching scarecrow wreath. It is sure to be the talk of the street! You will produce this deco mesh creation on your own by learning the spiral technique using ribbon.

Instructor-Trisha J. Hager, Lima Wreath & Craft Co.

KH 120 6:00-8:00pm Wednesday 8/12 \$39.00

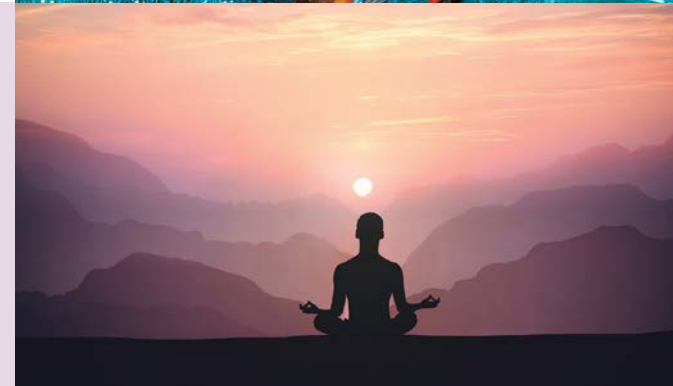


Hatha Yoga 101 #PE0018-202101

Have you always wanted to try yoga, or are you already comfortable with YOGA and want a change of scenery? Join us for our eight-class series. Class will begin with breathing techniques and stretching, then will move through basic poses to finish with stretching and relaxation. By the end of the eight week classes, the group will be on to more advanced yoga. The instructor will properly assess to provide modifications as well as advancements. Participants will need a yoga mat.

Instructor-Diann Seech, The Yoga Tree

KH MPC 6:00-7:00pm Tuesdays \$49.00
8/4, 8/11, 8/18, 8/25, 9/1, 9/8, 9/15, 9/22



SEPTEMBER

Discover Northern Italy and Its Lakes #PE0019-202101

Rhodes State College partnering with Collette Tours presents...

Discover Northern Italy and Its Lakes featuring Padua and Venice. The trip begins on **September 23, 2020**. Wander along winding canals and cruise on mountain-lined lakes as you take in the essence of Northern Italy. Settle in for a 3-night stay in Padua, an ancient city of Veneto, and delve into the city's culture on a walking tour. Embark on a guided tour of Venice and enjoy a free afternoon to do as you please. Witness the sinking castle of Sirmione. Relax during a leisurely 4-night stay on the shores of Lake Maggiore. Cruise the waters frequented by the rich and famous on Lake Como. From the stone bridges of Padua to the deep blue waters of Lake Maggiore, allow the beauty of Italy to move you.

For more info and registration,

Heather Seddelmeyer 419-995-8464

Seddelmeyer.H@RhodesState.edu

Collette Tours Client Relationship Specialist

Rich Gagne (401) 335-0014

Date of Departure: 9/23/2020

Double \$3,599.00/person
Single \$3,999.00/person
Triple \$3,569.00/person



* For bookings made after 3/24/2020 call for rates.

* Included in Price: Round Trip Air from Columbus Intl Airport, Air Taxes and Fees/Surcharges, Hotel Transfers

* Not Included in Price: Cancellation Waiver and Insurance of \$329 per person

* All Rates are Per Person and are subject to change based on air-inclusive package from CMH

Register and Pay TODAY to secure your class seat!

Please register five business days prior to the class start date to ensure your seat and that the class runs.

Minimum class enrollment must be met three business days prior to the class start date or the class will be canceled.



The West Central Ohio Manufacturing Consortium (WCOMC) is a group of manufacturers dedicated to improving the manufacturing workforce in the West Central Ohio region.

Membership in the WCOMC provides benefits to manufacturers, including:

- Workshops on timely workforce topics with discounts to WCOMC members.
- Access to pre-tested potential hires from the WCOMC's Manufacturing Pathways.
- Networking with other manufacturers to address workforce needs at WCOMC Steering Committee and Full Board meetings.
- Access to information on grants and other programs that save your company thousands of dollars.

For more information on these and other benefits of **WCOMC membership**, contact Durliat.D@rhodesstate.edu

The Mitsubishi Electric Training Center

at Rhodes State College

The following classes are being offered at the Rhodes State Campus 2020

PLC Basics GX Works2

This course provides you with the opportunity to learn about the basics of Programmable Logic Controllers (PLC). This class is a prerequisite to the GX Works2 Programming class. PLC Hardware, Numeric Data Handling, System Addressing, Programming Software, and Ladder Logic Basics are covered in this course.

GX Works2 Programming

This course introduces the GX Works2 Programming software and programming in ladder logic. It covers the concepts of ladder programming, as well as the features of the GX Works software. The material covered includes concepts applicable to the FX Series and Q series programmable controller families.

GOT 2000 and GT Works3

(HMI – Human Machine Interface)

This course is intended to familiarize the attendee with the GOT2000 family of operator interface products and the software needed to create, configure, and modify screens which can be used with PLC systems. This class will be taught using GT15 or GT16 operator interfaces, Q series or L series PLC's, and GT Works3 software suite. Because PLC Programming is not covered in this course, a working knowledge of PLC Programming prior to this class is required.

To register for these classes, visit

<https://us.mitsubishielectric.com/fa/en/support/training>

For information, call (419) 995-8351



MAR	PE001-202003	Creative Writing and Literature \$49.00
	PE002-202003	Cyber Security for Anyone \$39.00
	PE003-202003	Hatha Yoga 101 \$49.00
	PE004-202003	Thought you knew the BREW and Smoothies, too? \$39.00
APR	PE005-202004	Wine Tasting and Learning - The MET \$59.00
	PE006-202004	Making Sense of Common Scents \$39.00
	PE007-202004	Good, Better, Best: Healthy Living Simplified \$39.00
	PE008-202004	Online Selling \$39.00
	PE009-202004	Lima Symphony Orchestra; Spaceships, Aliens and Other Weird Creatures \$19.00/family
MAY	PE0010-202004	Garden Concrete Mosaic Stepping Stones - My Adult and Me \$49/Adult & Child Combo
JUN	PE0011-202004	The Fine Art of Mobile Photography \$39.00
JUL	PE0012-202101	Succulent Cupcake Decorating \$49.00
	PE0013-202101	Succulent Cupcake Decorating \$49.00
	PE0014-202101	Computer Literacy \$39.00
AUG	PE0015-202101	Making the Most of Fresh Summer Produce \$39.00
	PE0016-202101	Hand Sewing Woodland Animal Plushie - My Adult and Me \$39/Adult & Child Combo
	PE0017-202101	Seasonal Wreath Creation \$39.00
	PE0018-202101	Hatha Yoga 101 \$49.00
SEP	PE0019-202101	Discover Northern Italy and Its Lakes Double \$3,599.00/person Single \$3,999.00/person Triple \$3,569.00/person

Community Education Registration Information

You can register for our classes by any of the methods below.
Classes fill quickly, so register early.

Online: Visit RhodesState.edu/ContinuingEd where you will choose the “*Personal and Professional Enrichment*” section and follow the instructions for class registration.

In Person: Located at: 4240 Campus Drive, Lima OH 45804
Keese Hall Room 143

Mail: Send your completed registration form with payment to:
Rhodes State College, WDI, Room 111
4240 Campus Drive, Lima, OH 45804

Phone: Call *Continuing & Community Education* at (419) 995-8225

Holidays: The campus will be closed on:

New Year's Day	01/01/20	Independence Day	07/04/20
Martin Luther King, Jr. Day	01/20/20	Labor Day	09/07/20
Memorial Day	05/25/20		

Emergency closing: In the event the college is closed due to inclement weather, every effort will be made for a make-up class at the discretion of the college. Please make sure our *Continuing & Community Education* office has your up-to-date contact information.

Student accommodations: Students with special needs should notify the *Continuing & Community Education* office a minimum of two business days before the class start date for proper accommodations to be arranged.

Questions: Contact the *Continuing & Community Education* office with any questions WDI@RhodesState.edu or (419) 995-8225

Registration Fee

Price listed is per person and include all training materials, unless otherwise stated.
All courses are subject to cancellation if minimum enrollment is not met. 100% refund for canceled courses.

Credit cards are processed 3 business days prior to the listed start dates. For registrations made in-person, received by mail, or online, credit cards will be processed at the time of registration.

Refund:

- You can withdraw from a class up to five business days prior to the start date for a full refund less the cost of any materials already purchased.
- You will be charged 50% of the fee paid for cancellation within five business days of the respective start date.
- No refunds are issued for no-shows.
- Substitutions are welcome.
- Workforce Development and Innovation reserves the right to adjust these policies.



REGISTER NOW

Name: _____

Company: _____

☐ Home Address ☐ Company Address or Box#

Street Address _____

City, State and Zip Code _____

Daytime Phone#: _____

Cell Phone#: _____

Email Address: _____

Course Information

(Example: Course#: PE001-202003 Course Name: Creative Writing and Literature)

Course #: _____

Course Name: _____

Course #: _____

Course Name: _____

Course #: _____

Course Name: _____

Course #: _____

Course Name: _____

Please complete a separate form per person.

Payment Information

Total payment due: \$ _____

☐ Check Enclosed (Payable to Rhodes State College)

Credit Card: ☐ Visa ☐ MasterCard ☐ Discover Card

Name on Card: _____

Card Number: _____

Expiration Date: _____

Billing Zip Code: _____ 3-digit Security Code (CVV): _____

RHODES STATE COLLEGE CONTINUING & COMMUNITY EDUCATION 2019-2020 RELEASE & WAIVER

Participant Name _____

Child Name (If applicable) _____

Date of Birth _____ ☐ Male ☐ Female

1. In consideration for receiving permission to participate in the Rhodes State College Continuing & Community Education, and on behalf of my family, heirs, and personal representatives(s), I agree to assume all risks and responsibilities surrounding participation in the activity, the transportation to and from, and in any independent activities undertaken as supplemental to the activity.
2. I further agree to indemnify and hold harmless Rhodes State College and its governing boards, officers, employees, and representatives ("Released Parties") from liability for the injury or death of any person(s) and damage to property that may result while participating in the Activity.
3. I understand and agree that released parties do not have medical personnel available at the location of the activity or on the campus. I further understand and agree that Released Parties are granted permission to authorize emergency medical treatment, if necessary, and that Released Parties assume no responsibility for any injury or damage which might arise out of or in connection with such authorized, emergency medical treatment.
4. I further state that there are no health-related reasons or problems which preclude or restrict participation in the Activity.
5. I understand while participating in this activity, the participant may be photographed. I agree to allow the photo, video, or film-likeness to be used for any legitimate purpose by Rhodes State College.
6. I understand that Rhodes State College has the right to enforce standards of conduct and that the participant may be dismissed from the Activity at any time for failing to abide by such standards.

I CERTIFY THAT I HAVE READ THIS DOCUMENT AND FULLY UNDERSTAND ITS CONTENT. I AM AWARE THAT THIS IS A RELEASE OF LIABILITY AND A CONTRACT.

Parent/Guardian Signature _____

Emergency Contact _____

Date _____ Phone Number _____



1. Galvin Hall (GH)
2. Technical Education Laboratory (TL)
3. Cook Hall (CK)
4. Reed Hall (RH)
5. Public Service Building (PS)
6. Life & Physical Sciences Building (SCI)

7. James J. Countryman Engineering and Industrial Technology Building (JJC)
8. Keese Hall (KH)
9. Keese Hall Multipurpose Center (KH MPC)
10. Perry Webb Student Life Building (PW)

H Handicap Parking **P** Visitor Parking



Google Campus Map





Coming ahead...

Rhodesology Summer Camp Schedule

**Continuing & Community Education
Fall/Winter 2020 Class Schedule**



4240 Campus Drive
Lima, OH 45804

Non-Profit Org. U.S. POSTAGE PAID Lima, OH 45804 PERMIT #66
--