

Advance Utilities Project

East Avenue



Commuters and residents in the vicinity of East Avenue in East Norwalk, CT can expect significant infrastructure upgrades to underground utilities in the area. The work is scheduled to commence in Summer 2021 and will include full closures and detours. Utilities will be upgraded and if necessary, replaced and relocated to accommodate further infrastructure improvements.

UTILITY IMPROVEMENTS

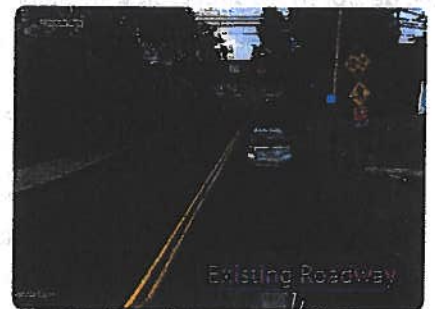
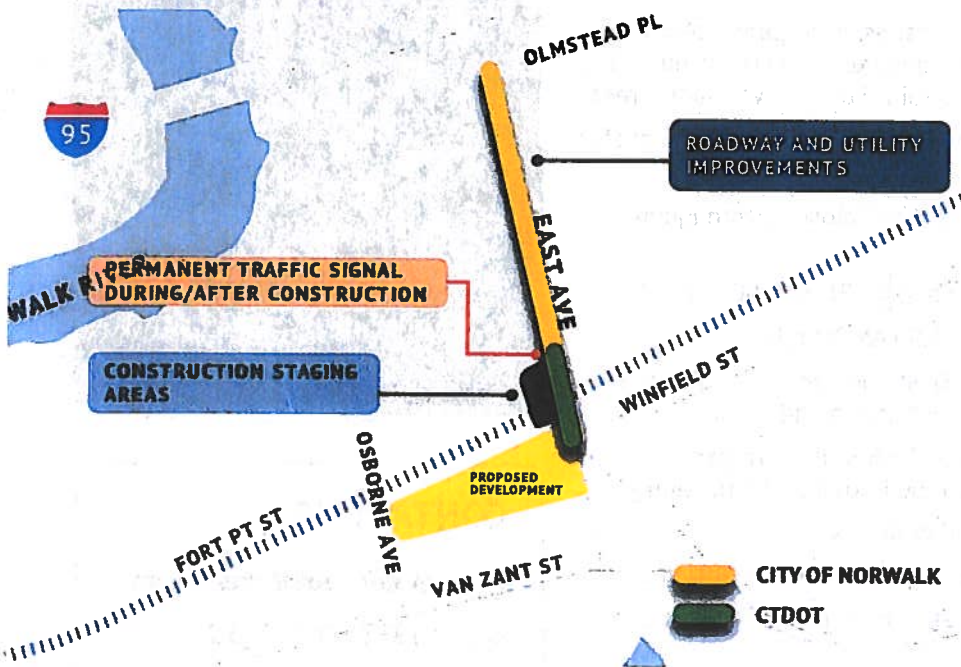
- New electrical, cable TV, fiber trunk line wires in East Norwalk
- Lower telephone conduits under East Avenue bridge
- New sewer pipe and water main under East Avenue bridge
- Replace City communication fiber on a new route, providing improved redundancy

SUMMER 2021

2.5 YEARS

\$15 MILLION

Approximate Construction Cost



CONTACT US

info@walkbridgect.com

1 (833) 462-9255



www.WalkBridgeCT.com





INTERMITTENT LANE CLOSURES AND DETOURS ANTICIPATED

To safely accommodate underground utility upgrades, anticipate intermittent lane closures and temporary nightly roadway closures on East Avenue. The posted detour route directs all traffic along Fort Point Street to Van Zant Street.

- One-way alternating traffic patterns along East Avenue between Winfield Street and Olmstead Place
- There will be a series of weeknight and weekend closures throughout the 30 month timeframe
- Intermittent East Avenue road closures from 8:00 PM to 6:00 AM
- Weekend closures from 8:00 PM Friday to 6:00 AM Monday
- Electronic Variable Message Signage (VMS) and posted detour signage will be placed in advance of any roadway restriction and closure
- Notices of all detours will be posted on the Walk Bridge Program website, and targeted outreach notices will be issued to the traveling public via e-blasts, social media posts, and direct mailers
- No anticipated closures or detours during major planned local events
- East Avenue will not be closed during weekends in July and August and all holiday weekends


Advanced notice will be provided for any closure via VMS boards, advance warning signs, and public outreach notices.

Sign up to receive traffic alerts at:

Info@WalkBridgeCT.com

CONTACT US

 info@walkbridgect.com

 1 (833) 462-9255



www.WalkBridgeCT.com





Walk Bridge Program

Advance Utilities Project Announcement

Alternating One-Way Traffic on East Avenue

Gas Line Utility Improvements in East Norwalk

- Commencing week of June 14, from 9:00 AM - 3:30 PM.
- One-way alternating traffic patterns northbound and southbound along East Avenue at the Fort Point Street, Gregory Boulevard and Winfield Street intersections.
- All local property and business access are maintained.

Please Be Advised

- Hours of work may vary at different locations.
- Motorists should be aware that modifications or extensions to this schedule may become necessary due to weather delays or other unforeseen conditions.
- Motorists are advised to remain alert, drive cautiously and to maintain a safe speed when driving in this vicinity.



About the Project

The Advance Utilities Project consists of undergrounding utilities located along East Avenue, between Winfield Street and Olmstead Place, in East Norwalk. The utility upgrades prepare for future improvements to the East Avenue Railroad Bridge and Roadway. The upgrades are part of the overall Walk Bridge Program. The Program consists of more than a half-dozen interrelated road, rail, and utility infrastructure projects that enhance safety, reliability, and service flexibility throughout Norwalk.

The Walk Bridge Replacement Project was prompted by operational failures of the existing 125-year-old bridge leading to delays impacting thousands of passengers on the New Haven Line. The new bridge increases rail capacity and efficiency on the New Haven Line and Northeast Corridor (NEC) in addition to improving navigational capacity and dependability for marine traffic on the Norwalk River. For more information, please visit: www.walkbridgect.com.

El Programa de Walk Bridge ofrece servicios de traducción para todas las personas que hablan español y criollo francés. Para obtener mayor información, comuníquese con la Oficina de Información Pública del Programa enviándonos un correo electrónico a info@walkbridgect.com o llamando al (833) 462-9255 (GO2-WALK). Adicionalmente, en la página web del Programa, WalkBridgeCT.com, ofrecemos traducciones de todos los materiales publicados a través de los servicios de Google Translate.

Pwogram Walk Bridge la ofri sèvis tradiksyon pou tout moun ki pale Panyòl ak Kreyòl Franse. Tanpri kontakte Biwo Enfòmasyon Piblik Pwogram nan pou plis enfòmasyon nan voye yon imèl ba nou nan info@walkbridgect.com, oswa rele (833) 462-9255 (GO2-WALK). Anplis, sit wèb Pwogram nan, WalkBridgeCT.com, ofri tradiksyon pou materyèl afiche a travè sèvis Google Translate yo.



CTDOT is working to inform local residents, commuters and businesses about Program construction activities through www.walkbridgect.com. To sign up to receive future notices by email, please visit walkbridgect.com/contact.



info@walkbridgect.com



833-462-9255 (GO2-WALK)



@WalkBridgeCT



/WalkBridgeCT