





Nov 12

Art Deco Glamour in Compacts, Purses, & Vanity Treasures

This presentation examines ladies' luxury accessories produced during the mid to late 1920's and early 1930's. It examines the characteristics of the Art Deco style and discusses its impact on luxury accessories for women. The presentation includes examples of Art Deco compacts, purses, and vanity items from that era, analyses their design and functionality, reviews makeup trends

associated with Art Deco, and covers aspects related to collecting and preserving these vanity items today.



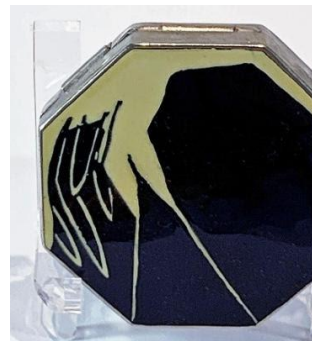
Virtual location

You will receive a confirmation email with a URL.



Nov 12, 2025 06:30pm ET - Nov 12, 2025 08:00pm ET

Add to [Google](#) · [Outlook Web](#) · [Outlook Mobile](#) · [Yahoo](#) · [iCal](#)



Terri Chappell Boyd collects and researches vintage perfumes, compacts, purses, and vanity accessories. Terri's main area of interest is Elizabeth Arden and the products from that cosmetics brand, though she also acquires other items as they speak to her heart. Terri has worked in sales and education within the

cosmetics industry for over 40 years and she values the history behind these items.

[Register](#)

Art Deco Society of Washington | PO Box 42722 | Washington, DC 20015 US

[Unsubscribe](#) | [Update Profile](#) | [Constant Contact Data Notice](#)



Try email & social marketing for free!