

## J. C. Penny's Department Store

**Original Name:** J.C. Penney's

**Address:** 8656 Colesville Road  
Silver Spring, MD 20910

**Architect(s):**

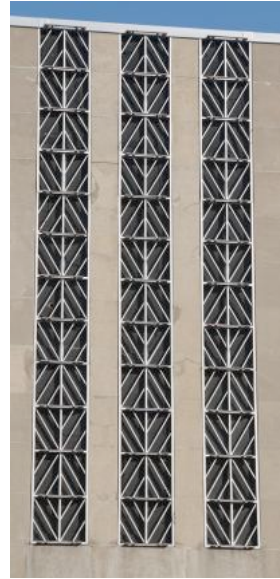
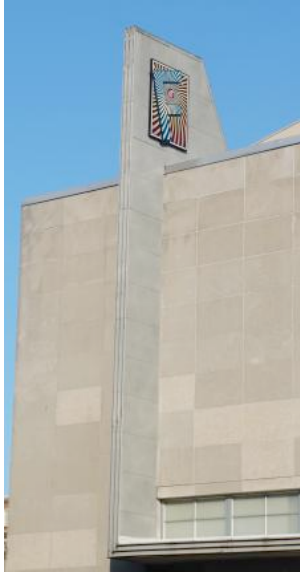
**Year of Construction:** 1950

**Current Status:** The Fillmore

**Original Use:** Music Venue

The J.C. Penney department store building was constructed in 1950 and, with the exception of the front limestone facade, was demolished in its entirety in 1990. In 2011, the facade was incorporated into the Fillmore music venue. The eye is first drawn to three, off-center geometric bands of vertical aluminum grillwork. These are balanced on the opposing side by a linear band of sleek, protruding limestone in contrasting grey which is topped with a fin-like crown and decorated with the current building owner's logo. Along the outer edge of this detail, as well as continuing under a single narrow band of horizontally placed rectangular windows, are three rows of fine aluminum band work.





### Static (Fixed) Google Map:



### Dynamic (Searchable and Expandable) Google Map:

<https://tinyurl.com/y4xgg5rk>