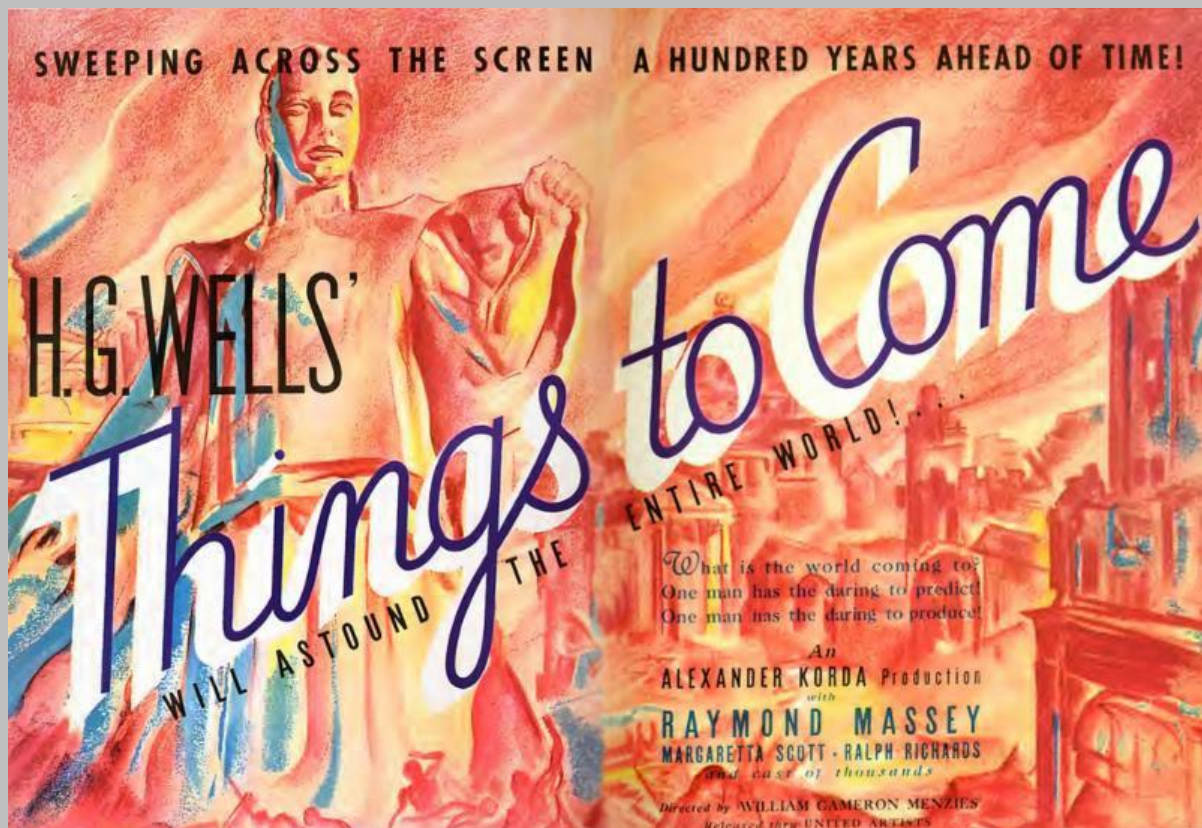


ART DECO SOCIETY OF WASHINGTON

PO Box 42722 - Washington, DC 20015 - [www.adsw.org](http://www.adsw.org) - 202.298.1100



KEY:

EVENTS sponsored by ADSW

## **EVENTS sponsored By Other Organizations**

**Save the Date**

**The French Connection:**

**Edgard Sforzina and the Birth of American Art Deco**

**Art Deco Society of Washington**

**and the**

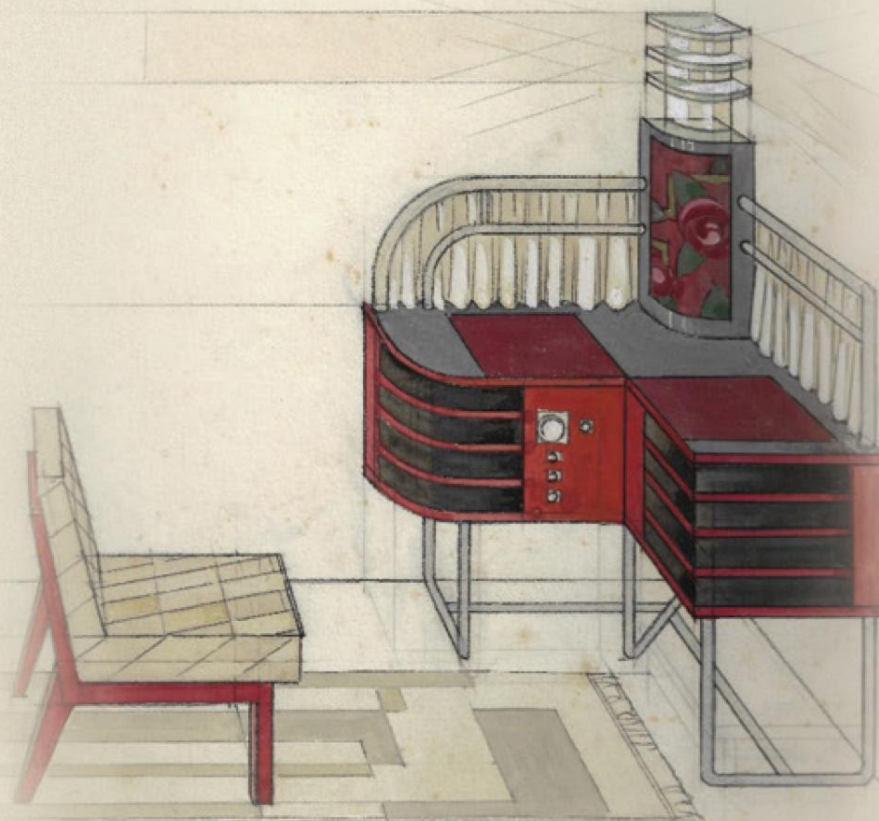
**Rust Library. Leesburg, Virginia**

**September 13, 2025**

# SFORZINA

DESIGNS FOR A MODERN AMERICA

1923–1941



Jim Linz & Denise Ellison Allen



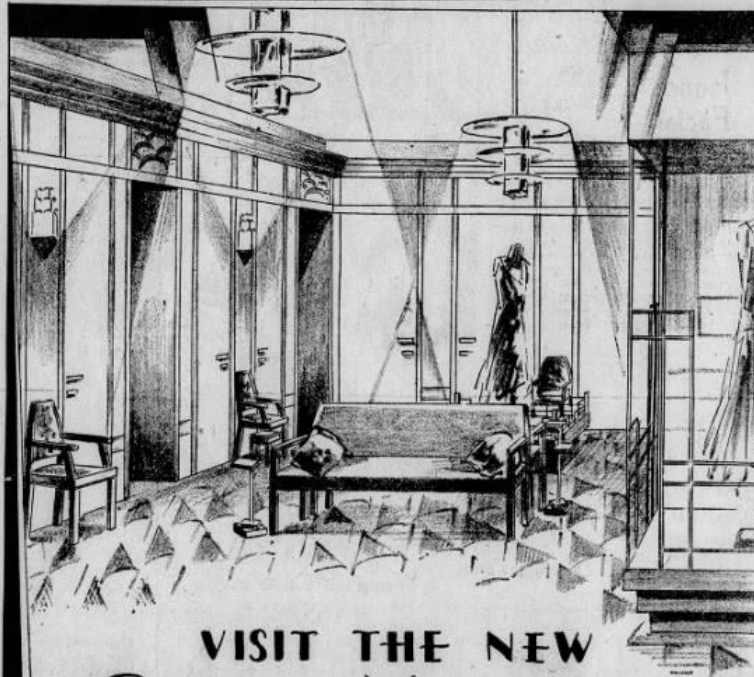
Author Jim Linz will discuss the role French architect and designer Edgard Sforzina played in popularizing Art Deco in the United States following the 1925 Paris Exposition of the Decorative Arts. This program is a collaboration between Loudoun County Public Library and the Art Deco Society of Washington.

Sforzina immigrated to the United States in 1923, 2 years before the Paris Exposition. Following the Exposition, Sforzina designed the furniture in the 1928 Exhibition of Modern American Decorative Arts in New York. He also designed several Art Moderne interiors, including millinery shops in Boston and Baltimore and an apartment for George Gershwin.



These early accomplishments led to his role in the design of the interiors of Cincinnati Union Terminal, including the executive offices.





## VISIT THE NEW SALON MODERNE

SPECIALIZING IN DRESSES at \$39<sup>90</sup> AND UP  
for MADAME AND MADEMOISELLE

**T**HAT our patrons may choose their finer dresses in a beautiful setting, where the atmosphere is that of sophisticated elegance, we have created the Salon Moderne—a triumph of the modern spirit.

If modern art intrigues you, visit the new Salon, by all means. And if frocks that are the essence of chic allure you, see the stunning collections of new modes that await you in a perfect setting.

*Second Floor, South Building*

The Salon was designed and executed by Forzino, Inc., of New York, the creators of some of the most celebrated Modern Art Interiors in this country.

### HUTZLER BROTHERS CO.

Howard, Saratoga and Clay Streets  
Telephone CAvert 1234



The Art Deco Society's 16-banner exposition on Edgard Sforzina will be on display in the Rust Library beginning September 1st.

The Rust Library is located near historic downtown Leesburg at 380 Old Waterford Rd NW, Leesburg, VA 20176.

The program will run from 11:30 AM to 12:30 PM. Admission is free. Reservations are not required.

Watch for additional information on historic restaurants in Leesburg and nearby wineries and breweries. Tours are also available at the historic Oatlands Plantation and Morven Park.

Modernism at the McLean Antique Show

Dordy Fontinel Shows

McLean Community Center

November 8-9, 2025

DORDY FONTINEL  
★ ★ ★ ★ ★ ★ ★ ★ ★ ★  
SHOW MANAGEMENT, INC.

Dordy Fontinel is now accepting applications for the 49th annual McLean Antique show to be held November 8th and 9th at the McLean Community Center. The show will again include a number of dealers who formerly participated in the Art Deco Society of Washington's long running Exposition of the Decorative Arts--The Art Deco Expo.



Among the dealers expected to participate are Don Selkirk of Past Pleasures Moderne, Ira and Miriam Raskin of Try to Remember, and Jim Linz of Deco-Rations, Gary Niederkorn, Jonathan Katz and Andre Dombrowski, Auerbach & Maffia, Elaine Klausman, Armbruster Art Glass, and Tony Singleton. Watch future issues of Things to Come for additional dealers as applications are processed. Weekly "Meet the Dealers" emails featuring some of the special items dealers plan to bring to the show will begin in September.

Interested in participating as a dealer? Drop Dordy Foninel a line -  
- [dordy@dfshows.com](mailto:dordy@dfshows.com) or call her at 434-361-1770.

**King Street Syncopators**

**Loudoun County Library/Cascades**

**July 3, 2025**

# Live Music: King Street Syncopators

**Cascades Library**  
*Thursday, July 3, 7 p.m.*

Celebrate the 100th anniversary of *The Great Gatsby* with jazz from the 1920s and 1930s. The band includes Seth Kibel on clarinet, Jacob Pembleton on upright bass, Aaron Campbell on guitar and Chris Martin on drums/percussion.



**All Ages**



**Jeanne Lanvin exhibition:**

## 'Haute Couture Heritage'

Savannah College of Art & Design

Atlanta

Through August 31, 2025



The first exhibition in the U.S. dedicated to Jeanne Lanvin (b. 1867, Paris; d. 1946, Le Vésinet, France), Haute Couture Heritage showcases more than 60 garments, illustrations, and photographs spanning the height of her practice. Drawing from the collections of Fondation Azzedine Alaïa and Lanvin Heritage, the exhibition thoughtfully reflects on the couturier's vast knowledge of silhouettes, fabric variations, and cutting techniques to highlight rich nuances in color, texture, transparency, and embellishment.

The virtuosity of Lanvin's craftsmanship lies in her eye for details and expertise in appliqué work, inlays, topstitching, and embroidery. The pure, refined shapes of her signature robes de style, as well as the evocative graphic patterns of her evening coats and capes, harmonize with the delicacy and subtleties of the Art Deco movement. Lanvin's distinctive ability to craft elegance with simplicity remains the hallmark of her house and enduring legacy.

Jeanne Lanvin: Haute Couture Heritage is curated by Gaël Mamine of Fondation Azzedine Alaïa in collaboration with Lanvin Archives, Parodi Costume Collection, and SCAD FASH creative director Rafael Gomes.

1600 Peachtree St. NW

Atlanta, GA

Frida: Beyond the Myth

Virginia Museum of Fine Arts

Through September 28, 2025







Twentieth-century Mexican artist Frida Kahlo continues to fascinate us with her arresting gaze, signature fashion, and trailblazing legacy. At the Virginia Museum of Fine Arts, this singular artist and her extraordinary works are the focus of *Frida: Beyond the Myth*.

The exhibition showcases many of the artist's most important paintings and drawings from the beginning of her career in 1926 until her death in 1954. More than 60 works of art in a variety of media, many rarely seen outside of Mexico, include self-portraits, still lifes, and compositions from her imagination. Also on view are photographs of Kahlo taken by many of those closest to her, including internationally renowned photographers Lola Álvarez Bravo, Imogen Cunningham, Julien Levy, Dora Maar, and Nickolas Muray.

Kahlo began painting during her recovery from a traumatic bus accident that she barely survived and that forever changed her life. This exhibition closely examines the inimitable style and complexity of Kahlo's paintings. Her life was a seemingly open book but was also paradoxically enigmatic, as she depicted life-altering events with unflinching truth yet masterfully employed symbolism and continually reinvented herself in iconic self-portraits. Her jewel-like paintings are among the most beautiful, memorable, and haunting images of the 20th century.

This presentation of paintings, drawings, prints, and photographs offers a rare opportunity to explore the art of Frida Kahlo, whose strength, vulnerability, and sensuality still compel us today. Discover how she crafted her image to reflect her Mexican pride, express gender fluidity, and adorn her injured body. Learn how Kahlo painted to transcend pain and physical disability. And celebrate how she ultimately triumphed to

achieve her own immortality, becoming a national treasure in her native Mexico and receiving posthumous acclaim around the world.

Virginia Museum of Fine Arts

200 N. Arthur Ashe Boulevard

Richmond, VA 23220

[Tickets](#)

**Roaring: Art, Fashion, and the Automobile in [France](#), 1918-1939**

**St. Louis Art Museum**

**Thru July 27, 2025**

Roaring explores the transformative role of the automobile in pre–World War II France and highlights innovations across art and industry by those who embraced it as a provocative expression of the modern age. This expansive exhibition features paintings, photographs, sculpture, furniture, films, fashion, textiles, and 12 historic automobiles.

Early 20th-century France attracted visionaries from across the globe with creative and economic opportunities. Fusing craft and technology, automobiles absorbed and influenced facets of modern art, design, fashion, and architecture. After World War I, cars—long the domain of engineers—met the minds and hands of French designers, artists, and craftspeople. Materials and techniques moved fluidly between sumptuous Art Deco interiors and luxury automobiles. Avant-garde showrooms, glittering displays, and thrilling races helped market the thousands of cars driving off assembly lines. Those same factories became centers of a labor movement that brought paid vacations and efficient automobiles to French workers.

In cars, artists discovered novel perspectives, subject matter, and even canvases. As driving became more comfortable, motoring fashions evolved into stylish wardrobe staples. Magazines portrayed liberated women dressed in knit sportswear driving

convertibles. When fashions streamlined, so did cars. Embodying aerodynamics and natural forms, the sculptural curves of 1930s French custom, coachbuilt automobiles are unrivaled today. With an open, interdisciplinary approach, *Roaring* illuminates the rich ecosystems that nourished this golden age of French automotive design.

Divided into six sections, the exhibition assembles more than 160 works, comprising major loans from prominent institutions and private collections around Europe and North America. *Roaring* is accompanied by a 210-page [exhibition catalogue](#) with contributions from seven authors.

*Roaring* is curated by [Genevieve Cortinavis](#), the Andrew W. Mellon Foundation Associate Curator of Decorative Arts and Design, with research assistant Sarah Berg and automobile curation by Ken Gross.

**Highly recommended. I recently visited the St. Louis Museum of Art to see the exhibition and highly recommend the exhibition as well as other parts of St. Louis' Forest Park. I visited shortly after a major storm swept through the area and there were huge trees down throughout the park. None, however, seemed to have hit a major building.**

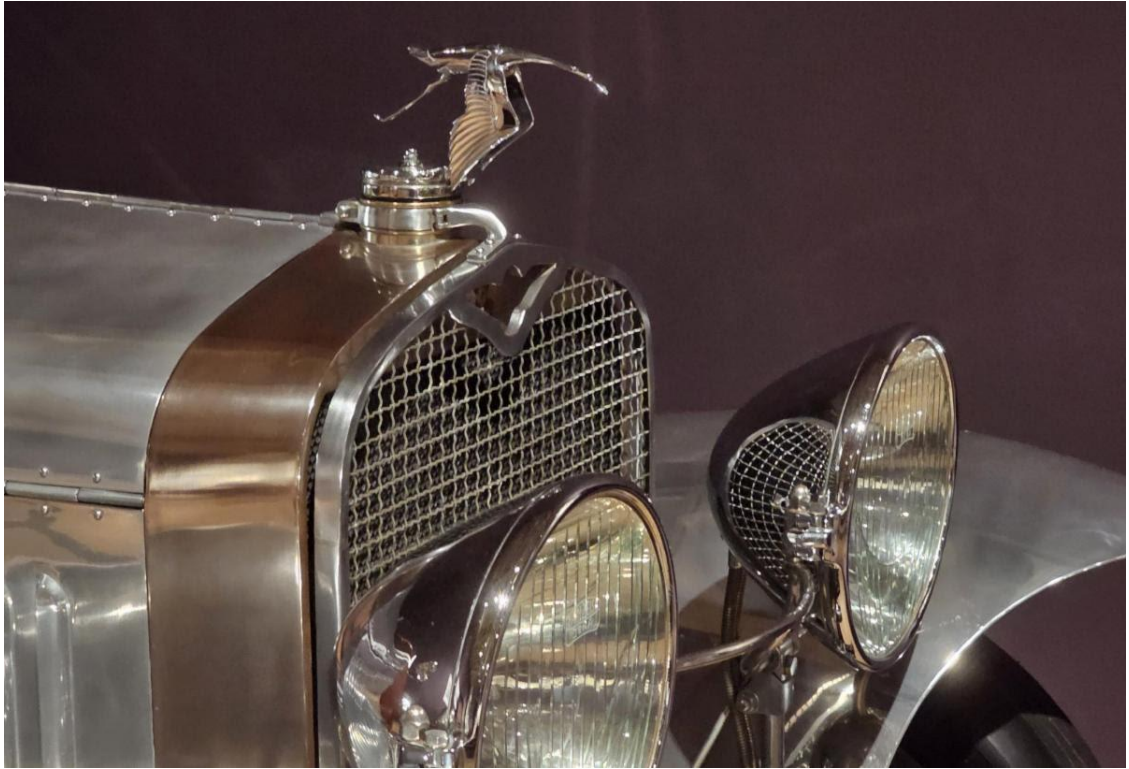
**The photos below were taken during my visit, including both the exhibition, the 1936 Jewel Box greenhouse, and the Pavilion from the 1904 St. Louis World's Fair.**

















## **St. Louis Art Museum**

One Fine Arts Drive

Forest Park

St. Louis, Missouri 63110-1380

314.721.0072

Entrance in Taylor Hall, East Building

### Cost

Adults: \$20; seniors and students: \$16; children (6–12): \$11; children (5 and under): free; Members always free. Advanced tickets are recommended.

[Tickets](#)

### **Cycle Thru! The Art of the Bike**

Cincinnati Art Museum

Through August 24, 2025



Gear up to see a 1901 Wolff-American Ice Bicycle engineered to traverse a frozen course, a seafoam green 1950s Huffy Radiobike designed so riders could cruise to their tunes of choice, and Pee-wee Herman's customized 1953 Schwinn DX Cruiser starring in Tim Burton's 1985 film, *Pee-wee's Big Adventure*. These are just a few of the highlights waiting for you to discover in *Cycle Thru! The Art of the Bike*, an exhibition featuring the bicycle as a way to explore intersections of history, popular culture, design, and modern and contemporary art.

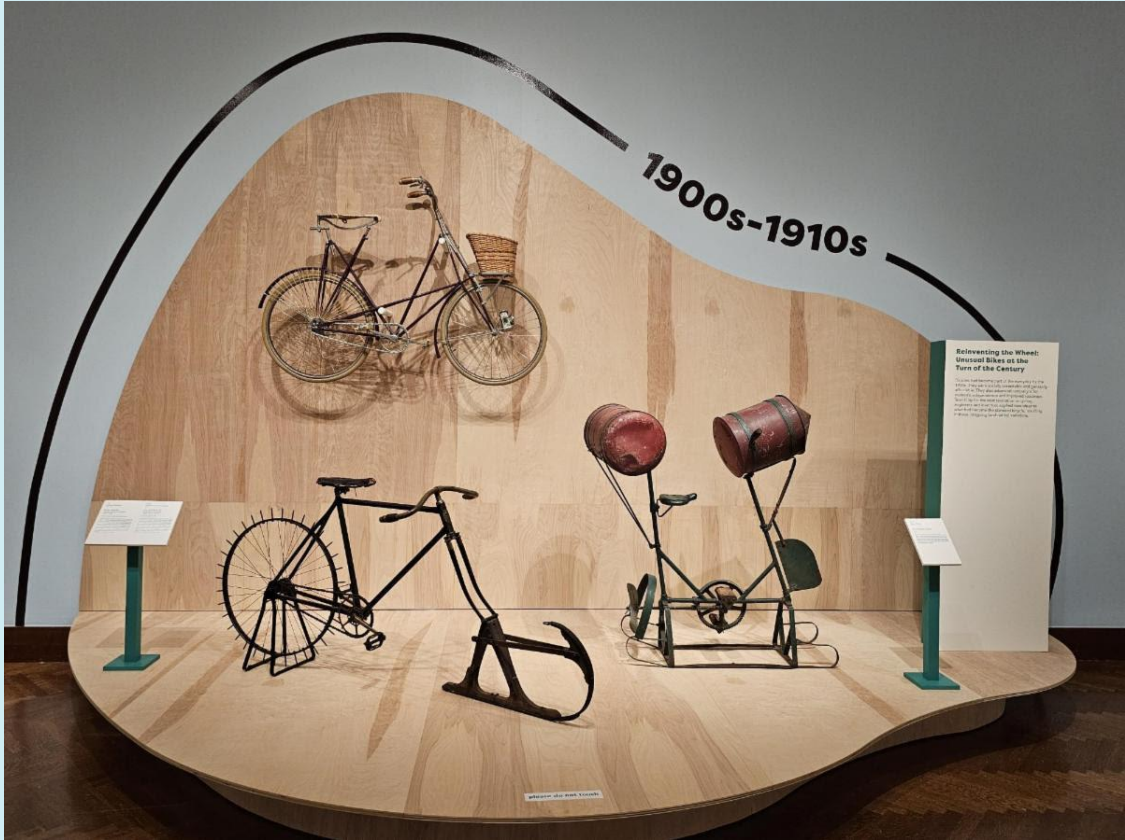
Spanning the 1860s to today, over 20 bicycles from The Bicycle Museum of America in New Bremen, Ohio, illustrate the design innovations—both functional and aesthetic—marking the vehicle's development. Paired with contemporary art by Jarbas Lopes, Bas Jan Ader, and Bari Kumar—as well as selections from the Cincinnati Art Museum's



collections of photographs, fashion, posters and paintings—visitors can pedal thru and ponder the role of the bicycle as an evolving icon, a connector of cultures, and a vehicle for autonomy and freedom to all, regardless of age, gender, and geography.







1900s-1910s

**Reinventing the Wheel:  
Unusual Bikes at the  
Turn of the Century**

From the early days of the bicycle, people have been looking for ways to make it more comfortable, safer, and more fun to ride. In the late 19th and early 20th centuries, inventors came up with some really unusual designs. Some of these bikes had no seat, some had no pedals, and some had no wheels at all! These bikes were often used for entertainment or as a way to get around town. They were a fun way to experiment with the idea of the bicycle and to see what could be done with it.

PHOTO: JEFFREY L. COOPER





**Frank Lloyd Wright's Southwestern Pennsylvania**

**National Building Museum**

**Thru October 5, 2025**





Animation Still Civic Center At Point Park

Frank Lloyd Wright's Southwestern Pennsylvania presents both realized and unrealized projects Frank Lloyd Wright designed for the region from the 1930s through the 1950s.

The exhibition examines how his vision of the future might have impacted urban, suburban, and rural landscapes.

Realistic animated films, created by Skyline Ink Animators + Illustrators, provide, for the first time, a virtual exploration of five unrealized Wright projects for Southwestern Pennsylvania. These include a monumental reimagining of the Point (1947), a self-service garage for Kaufmann's Department Store (1949), the Point View Residences designed for the Edgar J. Kaufmann Charitable Trust (1952), the Rhododendron Chapel (1952), and a gate lodge for the Fallingwater grounds (1941). Using three-dimensional rendering technology to choreograph camera paths and to shape lighting to produce the same type of visual effects used in the film industry, Skyline Ink's resulting animations will be presented throughout the exhibition to provide a multimedia experience. A viewing theater will envelop visitors to show an expanded film of the three unrealized Pittsburgh designs. To further engage the senses, the film will feature an accompanying musical score by Daniel May with Marty Ashby and produced by MCG Jazz. Viewers will take a journey into Wright's creative mind, exploring architecture from an artistic perspective, with emphasis on his intended materials, textures, light and shadow.

Rose Iron Works and Art Deco

Cleveland Museum of Art

July 6, 2025 - October 19, 2025

[Web Image](#)

In the early 1900s, as Cleveland experienced rapid economic growth and the expansion of its iron and steel industries, Hungarian ornamental blacksmith Martin Rose moved to the city and founded Rose Iron Works. It soon became one of the leading manufacturers of decorative metalwork in the United States. Trained in Budapest and Vienna in the Art Nouveau tradition, Rose was interested in artistic and technological innovations. In 1925, a groundbreaking international exhibition in Paris presented modern decorative arts—a style that later became known as Art Deco. Rose's compatriot and a designer active in Paris, Paul Fehér joined the Rose company in Cleveland a few years later. Their artistic collaboration resulted in some of the best Art Deco ironwork in the country, including the



celebrated Muse with Violin Screen (1930), now in the CMA's collection. This exhibition explores Rose's transition from Art Nouveau to Art Deco, focuses on his 1930s commissions, and places his work in the European context. It also emphasizes the importance of Rose Iron Works, a family-run Cleveland company that for 120 years has been adorning some of the city's most notable buildings.

Frida Kahlo:

**Through the Lens of Nickolas Muray**

Museum of the Shenandoah Valley

September 6, 2025 - January 18, 2026



Opening on September 6, this exhibition provides an intimate look at Frida Kahlo (1907–1954), Mexico’s most prolific and well-known female artist, through the photographic lens of her long-time friend and lover, Nickolas Muray (1892–1965). Approximately 50 photographs, dating from 1937 to 1946, explore Muray’s unique perspective and bring to light Kahlo’s deep interest in her Mexican heritage and her personal relationships.