

MAIN + MARINE CREATIVE OFFICES & RETAIL

3015 Main Street - Santa Monica, Ca 90405

FOR LEASE

CBCWORLDWIDE.COM



3015 Main Street #400
Santa Monica 90405
Lic- 00616212

George Gross
310-586-0344

geogross@coldwellbanker.com
Lic- 01342211

Maurice Morales
310-586-0324

mmorales@coldwellbanker.com
Lic- 01060477

MAIN + MARINE CREATIVE OFFICES & RETAIL

3015 Main Street - Santa Monica, Ca 90405

BUILDING SIZE
21,978

PARKING
2:1,00 ratio at \$165 per space per month

TERM
Flexible lease terms

BUILDING FEATURES

- Rooftop deck, patio and courtyard
- Custom architectural finishes throughout building
- Polished concrete floors
- 24 hour access
- Secured parking
- Independent HVAC in each suite

www.mainstreetsm.com



George Gross
310-586-0344
geogross@coldwellbanker.com
Lic: 01342211

Maurice Morales
310-586-0324
mmorales@coldwellbanker.com
Lic: 01060477

FOR LEASE

MAIN + MARINE CREATIVE OFFICES & RETAIL

3015 Main Street - Santa Monica, Ca 90405

FOR LEASE



3015 Main Street #400
Santa Monica 90405
Lic- 00616212

CBCWORLDWIDE.COM

George Gross
310-586-0344
geogross@coldwellbanker.com
Lic- 01342211

Maurice Morales
310-586-0324
mmorales@coldwellbanker.com
Lic- 01060477

MAIN + MARINE RETAIL - SUITE 3015 "B"

3015 Main Street - Santa Monica, Ca 90405

SUITE 3015 "B"

SIZE

2,266 rentable square feet.

RATE

\$5.75psf/month, NNN (NNN estimated at \$0.52/psf)

- Located on signalized corner
- Former market and non-vented juice bar
- Incidental food infrastructure
- Polished concrete floors
- High ceilings
- Sidewalk patio

Main St
3000

SPACE AVAILABLE

FOR LEASE



3015 Main Street #400
Santa Monica 90405
Lic: 00616212

CBCWORLDWIDE.COM

George Gross
310-586-0344

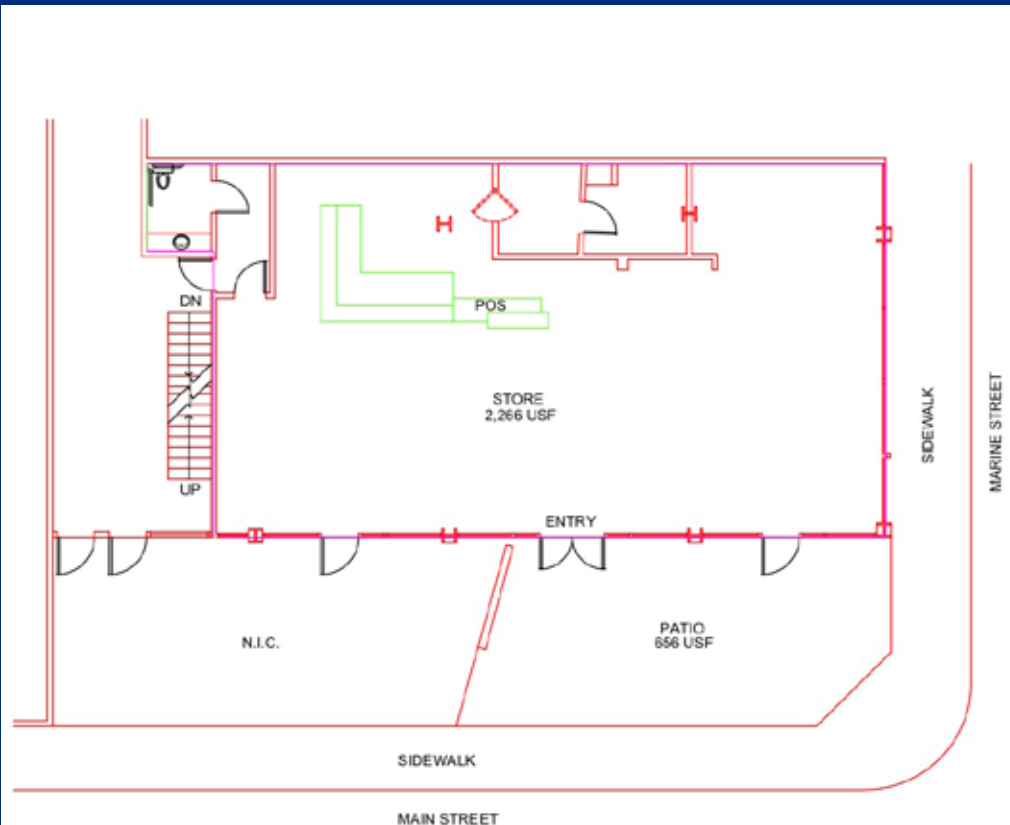
geogross@coldwellbanker.com
Lic- 01342211

Maurice Morales
310-586-0324

mmorales@coldwellbanker.com
Lic- 01060477

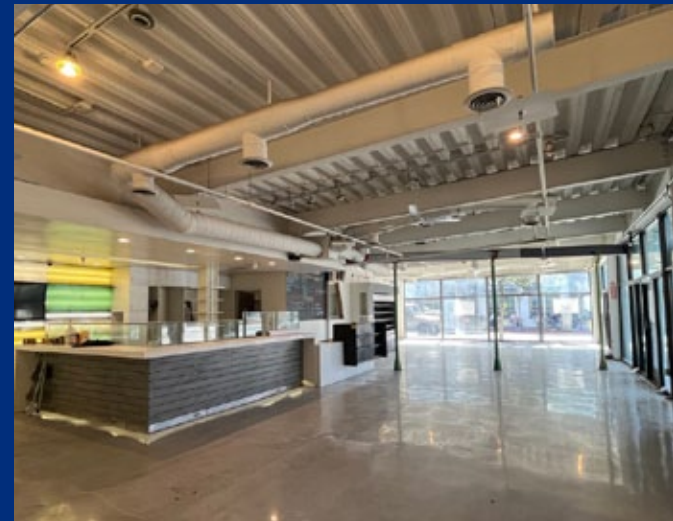
MAIN + MARINE RETAIL - SUITE 3015 "B"

3015 Main Street - Santa Monica, Ca 90405



STORE AS BUILT FOR:
3015 #B MAIN STREET
SANTA MONICA, CA 90405

(USF DESIGNATES BOMA USABLE SQUARE FOOTAGE)



FOR LEASE

CBCWORLDWIDE.COM



George Gross

310-586-0344

geogross@coldwellbanker.com

Lic- 01342211

Maurice Morales

310-586-0324

mmorales@coldwellbanker.com

Lic- 01060477

MAIN + MARINE CREATIVE OFFICE - SUITE 333

3015 Main Street - Santa Monica, Ca 90405

SUITE 333

SIZE

3,120 rentable square feet.

RATE

\$3.50/psf/month, modified gross

- Southwest facing corner with lots of natural light
- Reception area, 4 private offices, bullpen, kitchen
- Polished concrete floors
- Exposed HVAC ducting
- Private restroom with shower
- Potential live/work
- Side patio and rooftop deck

FOR LEASE

CBCWORLDWIDE.COM



3015 Main Street #400
Santa Monica 90405
Lic- 00616212

George Gross
310-586-0344

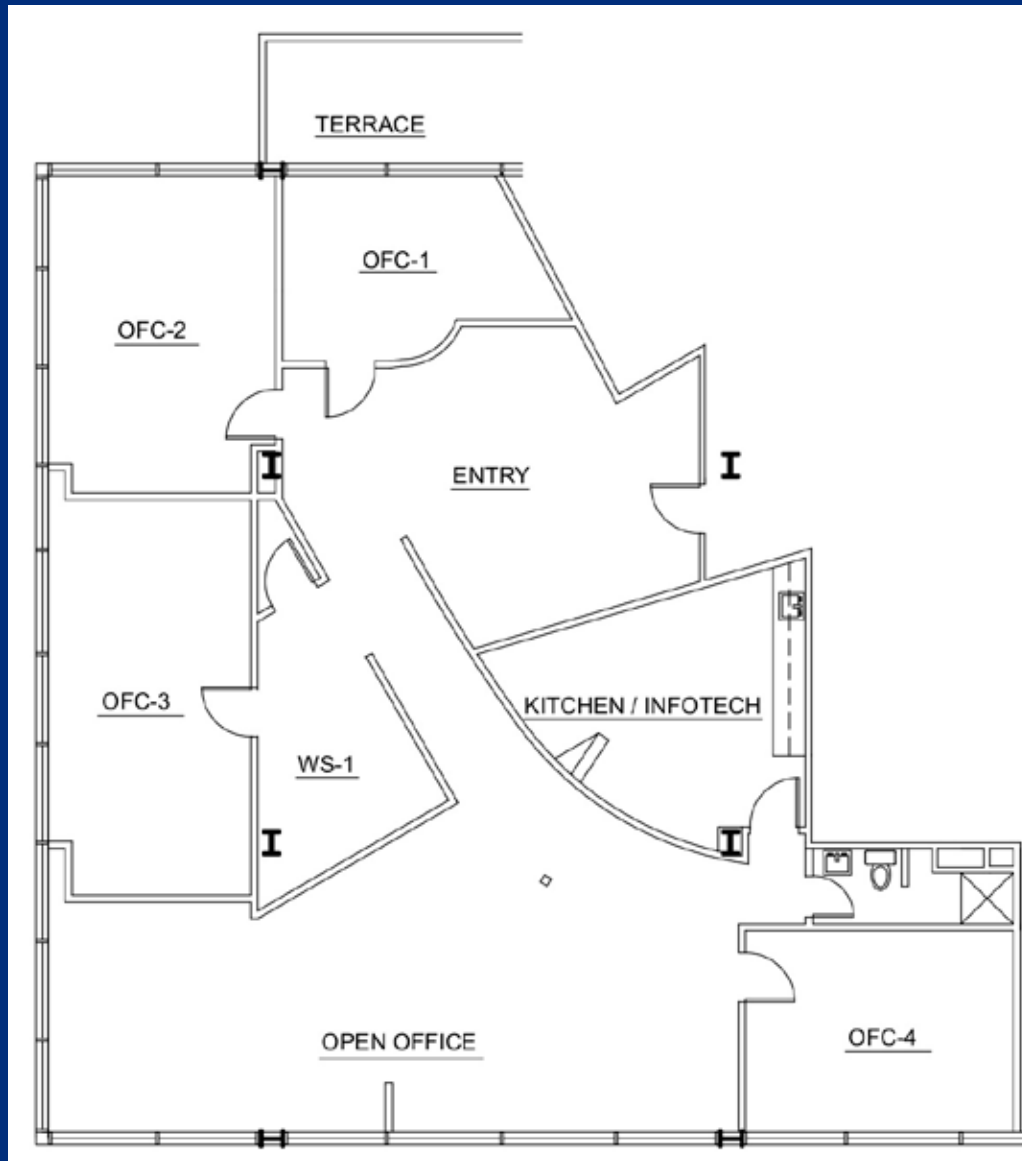
geogross@coldwellbanker.com
Lic- 01342211

Maurice Morales
310-586-0324

mmorales@coldwellbanker.com
Lic- 01060477

MAIN + MARINE CREATIVE OFFICE - SUITE 333

3015 Main Street - Santa Monica, Ca 90405



FOR LEASE

CBCWORLDWIDE.COM



George Gross

310-586-0344

geogross@coldwellbanker.com

Lic- 01342211

Maurice Morales

310-586-0324

mmorales@coldwellbanker.com

Lic- 01060477

MAIN + MARINE CREATIVE OFFICE - SUITE 350

3015 Main Street - Santa Monica, Ca 90405

SUITE 350

SIZE

1,581 rentable square feet
(Divisible to 1,269/rsf or 1,109)

RATE

\$3.95/psf/month, modified gross

- South facing corner with lots of natural light
- Primarily large open suite with 2 private offices & kitchen
- Bamboo flooring
- Lush courtyard view
- Rooftop deck
- Built-in cabinetry with lots of storage



3015 Main Street #400
Santa Monica 90405
Lic- 00616212

George Gross

310-586-0344

geogross@coldwellbanker.com

Lic- 01342211

Maurice Morales

310-586-0324

mmorales@coldwellbanker.com

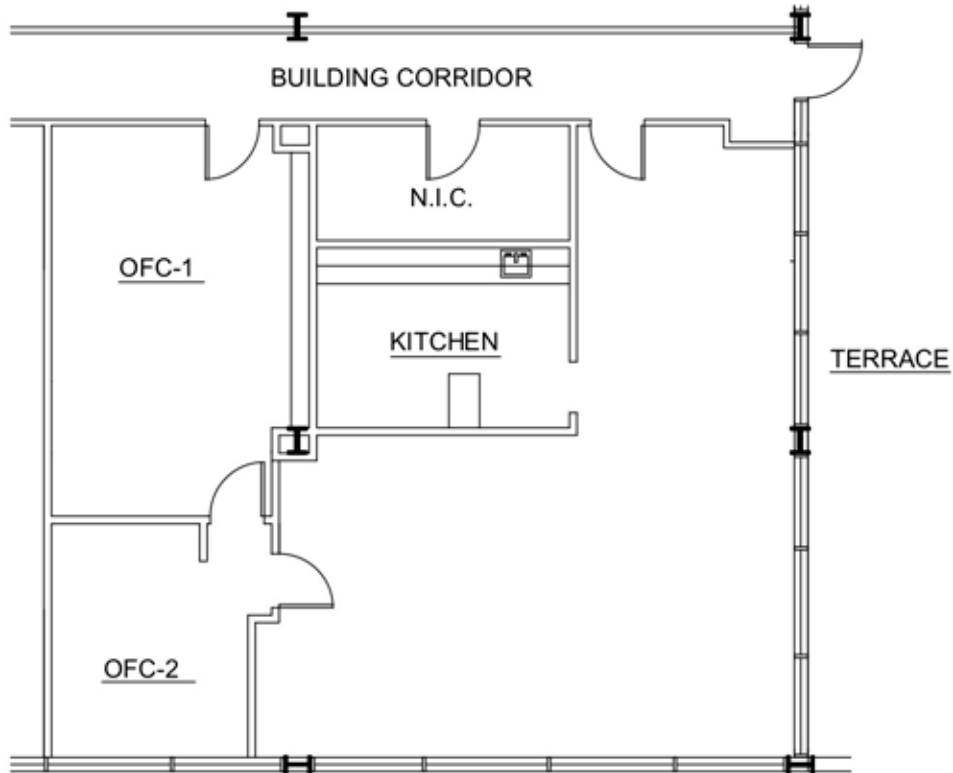
Lic- 01060477

FOR LEASE

CBCWORLDWIDE.COM

MAIN + MARINE CREATIVE OFFICE - SUITE 350

3015 Main Street - Santa Monica, Ca 90405



FLOOR PLAN SUITE 350
3015 MAIN STREET
SANTA MONICA, CA 90405
1,581 RENTABLE SQ. FT.



FOR LEASE

CBCWORLDWIDE.COM



George Gross

310-586-0344

geogross@coldwellbanker.com

Lic- 01342211

Maurice Morales

310-586-0324

mmorales@coldwellbanker.com

Lic- 01060477

MAIN + MARINE CREATIVE OFFICE - SUITE 370

3015 Main Street - Santa Monica, Ca 90405

SUITE 370

SIZE

627 rentable square feet

RATE

\$4.15/psf/month, modified gross

- Lots of natural light
- Entirely open suite
- Polished concrete flooring
- Exposed HVAC
- Side patio and rooftop deck



3015 Main Street #400
Santa Monica 90405
Lic- 00616212

George Gross
310-586-0344
geogross@coldwellbanker.com
Lic- 01342211

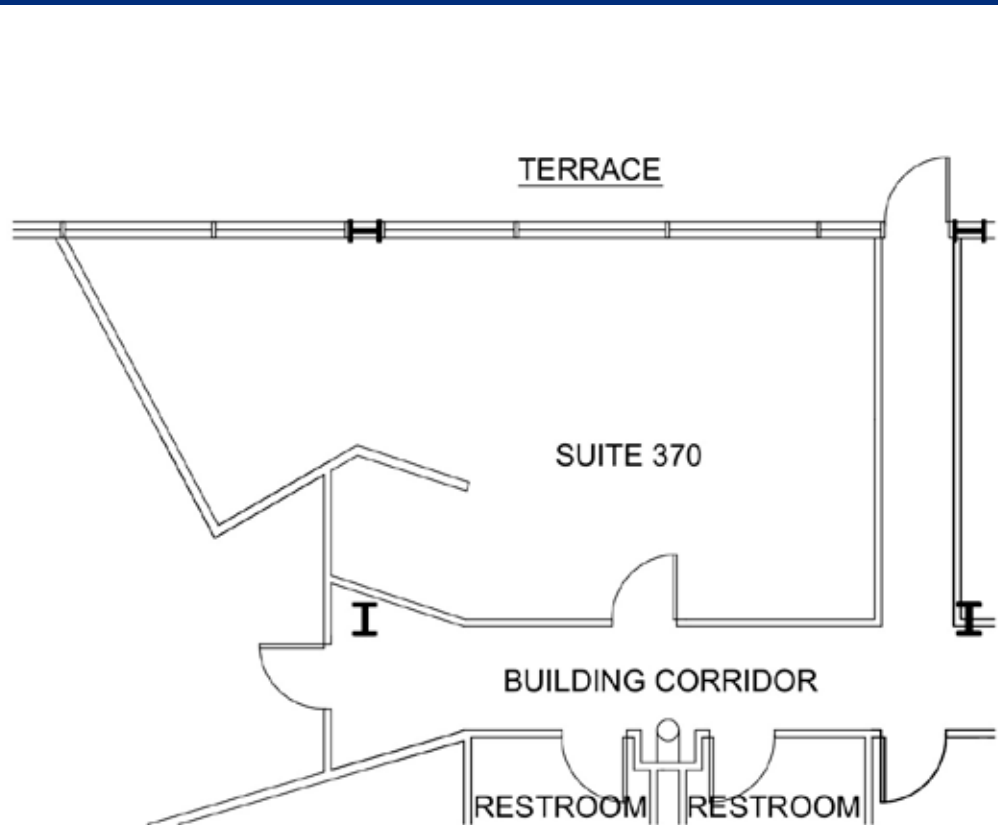
Maurice Morales
310-586-0324
mmorales@coldwellbanker.com
Lic- 01060477

FOR LEASE

CBCWORLDWIDE.COM

MAIN + MARINE CREATIVE OFFICE - SUITE 370

3015 Main Street - Santa Monica, Ca 90405



3015 MAIN STREET
SUITE 370
SANTA MONICA, CA 90405
627 RENTABLE SQ. FT.



FOR LEASE

CBCWORLDWIDE.COM



George Gross

310-586-0344

geogross@coldwellbanker.com

Lic- 01342211

Maurice Morales

310-586-0324

mmorales@coldwellbanker.com

Lic- 01060477

MAIN + MARINE CREATIVE OFFICE - SUITE 480

3015 Main Street - Santa Monica, Ca 90405

SUITE 480

SIZE
488 rentable square feet

RATE
\$3.95/psf/month, modified gross

- Lots of natural light
- Two offices
- Hardwood flooring
- Exposed HVAC
- Rooftop deck



George Gross
310-586-0344

geogross@coldwellbanker.com
Lic- 01342211

Maurice Morales
310-586-0324

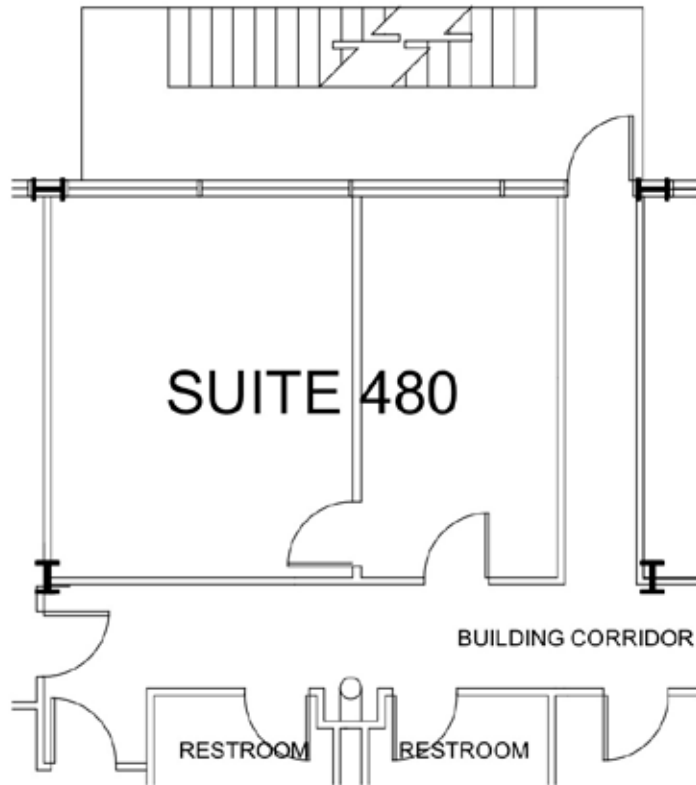
mmorales@coldwellbanker.com
Lic- 01060477

FOR LEASE

CBCWORLDWIDE.COM

MAIN + MARINE CREATIVE OFFICE - SUITE 480

3015 Main Street - Santa Monica, Ca 90405



3015 MAIN STREET
SUITE 480
SANTA MONICA, CA 90405
488 RENTABLE SQ. FT.



FOR LEASE

CBCWORLDWIDE.COM



George Gross

310-586-0344

geogross@coldwellbanker.com

Lic- 01342211

Maurice Morales

310-586-0324

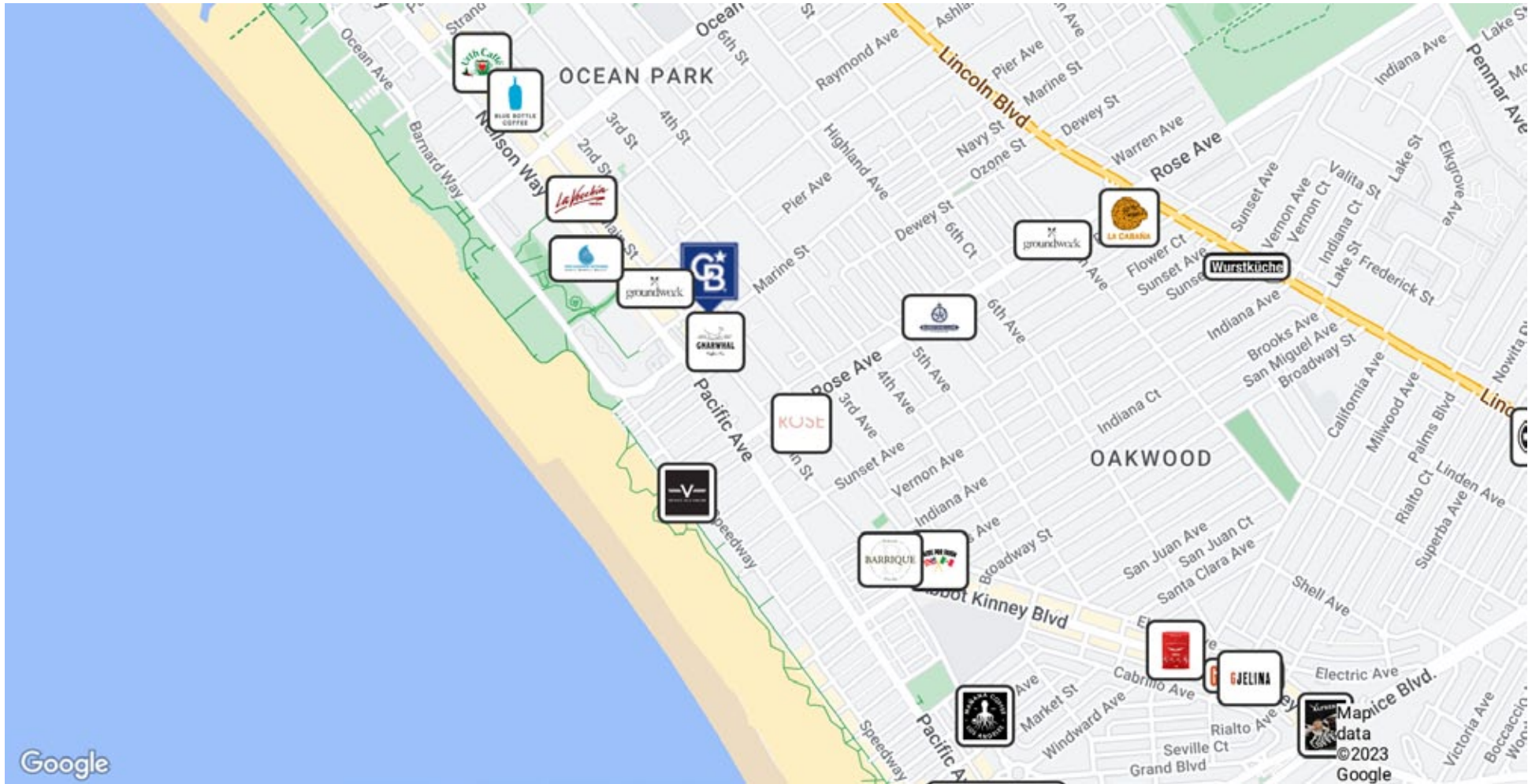
mmorales@coldwellbanker.com

Lic- 01060477

LEASE

MAIN + MARINE

3015 Main Street Santa Monica, CA 90405



George Gross

310 586 0344

George.Gross@coldwellbanker.com

Maurice Morales

310 405 9385

Maurice.Morales@cbcrrt.com



COLDWELL BANKER
COMMERCIAL

REALTY