

Planting the Seeds of our Parks Transformation



FOREVER PARKS FOUNDATION
OF PEARLAND



Amplifying our impact in Pearland

To the City of Pearland, Parks & Recreation,
Administration and Council Members,

In 2021, our entire community continued to persevere into the second year of our global pandemic, underscoring the importance of our parks and public spaces for Pearland's recreation needs.

And despite the challenges of the pandemic, it was a transformational year for the work that the Forever Parks Foundation of Pearland has been able to do with your tireless encouragement and support.

We were humbled to not only grow the impact of our foundation, but also grow the dedicated volunteer support that makes up our board.

We onboarded four new board members – David Schneider, Lisa Cashbaugh-Sanchez, Kamra Kilmer, and Jeff Webb – and were fortunate to rely on the support of many dozens of volunteers to help keep our organization focused on fulfilling its mission.

We continue to be grateful for the community support of our mission and of our largest-ever adopted goal to give the gift of inclusive play to the children of Pearland through the inclusive playground planned for The Sports Complex at Shadow Creek Ranch.

This playground, paired with the Miracle Field that Pearland is opening in 2022, provides a new world for those children in our community who need inclusive play opportunities.

We finished 2021 nearly at our fundraising goal, with the expectation we will see this wonderful effort over the finish line and into reality in 2022.

In addition to our inclusive playground commitment – which you can read more about in the pages of this Annual Report – we also exceeded our commitment to provide funding to the Parks and Recreation Department's financial assistance program.

On behalf of the Foundation's board, I would like to express my sincere thanks to the City of Pearland, its Parks department, and our volunteers, sponsors, and partners for the continued collaboration on these important projects and events.



Kelly Moody

This playground, paired with the Miracle Field that Pearland is opening in 2022, provides a new world for those children in our community who need inclusive play opportunities.

I'm also so grateful for our founding board members — Katie Daggett, Bunny Denton, Lonzie Helms, Frank Ross, and Fred Weary — and past board members of the Foundation who planted the roots deeply in our community so that these amazing projects could grow and flourish today.

As we look to the future, we are incredibly excited to open Pearland's first inclusive playground in 2022 and continue supporting these vital projects that bring the joy and access of our parks to the entire Pearland community.

Kelly C Moody

Kelly Moody
President
Forever Parks Foundation of Pearland

OUR GOVERNANCE

Our Foundation's mission

Our Mission is to partner with the City to establish premier parks, facilities, and programs in Pearland.

We are a group of community volunteers partnering with the City of Pearland Parks & Recreation sharing a common vision to enrich lives through the development of and accessibility to parks and recreation.

Together, with support of community partners, sponsors, donors, and volunteers we are working to establish supplemental income streams that will provide funding to expedite the development of parks, facilities, and programs to meet the needs and expectations of our residents.

2021-2022 Board of Directors

Executive Committee

Kelly Moody
President

Richard Vaughan
Vice President

JoAnne Knodel
Treasurer

Maria Albrecht
Secretary

Ex-Officio Board Members

Carry Capers
Director, Pearland Parks & Recreation

Dennis Jackson
Chair, Pearland Parks,
Recreation and
Beautification Board

Rose Hinojosa-Mandola
Resource Development, Pearland Parks
& Recreation

Honorary Members

Lonzie Helms
Frank Ross
Fred Weary

Past Board Members and Ex-Officio Members

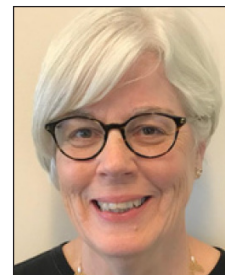
Beatrice Aguilera
Katie Daggett
Bunny Denton
Mike Doleski
Donald Hayes
Michelle Graham
Lata Krishnarao
Shuang Leng
Ted Mittica
Dustin Nitz
Jason O'Mara
Keith Ordeneauz
Dr. Christopher Orlea
Alicia Rodríguez
David Rosenthal
Kelly Shannon
Reagann Shulke



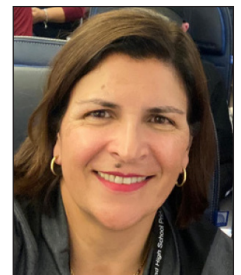
Kelly Moody



Richard Vaughan



JoAnne Knodel



Maria Albrecht



Lisa Cashbaugh-Sanchez



Bill Eisen



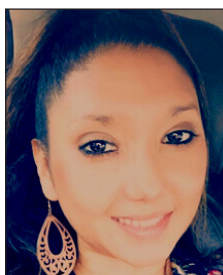
James Jiang



Nikki Kamkar



Kamra Kilmer



Olivia Quintanilla



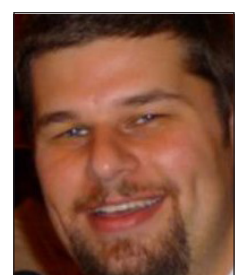
Bianca Reed



David Schneider



Buck Stevens



Jeff Webb

Making play in Pearland accessible for all

After years of laying the groundwork, the Forever Parks Foundation kicked off its biggest-ever fundraising effort: Building our community's first-ever inclusive playground at the Shadow Creek Sports Complex.

In January, Foundation board member Nikki Kamkar was honored to join the groundbreaking event for the Sports Complex of Shadow Creek Ranch Phase II to share the vision of the Inclusive Playground.

We finalized the playground designs and proposal in partnership with Inclusion Matters by Shane's Inspiration before kicking off our official fundraising campaign in May 2021. The designs provided an amazing vision that helped our supporters understand the value of the playground and the theme.

Texas State Representative Ed Thompson helped secure a \$750,000 grant from the Texas Parks and Wildlife Department for this playground, and we received the Brazoria County Community Foundation Lowery grant for \$10,000 and a Davis Days Foundation grant for \$10,000, as well. The Christopher & Dana Reeves Foundation provided a \$25,000 grant that will fund the We Go swing for the playground; that grant represents the first national grant the Foundation has applied for and received in our history.

Our initial fundraising target was \$750,000 for this project, and we approved an adjusted \$960,000 target to accommodate increased scope. Our sponsors, partners, and donors in the community helped us reach our \$960,000 adjusted target, but inflationary pressures and supply chain challenges that have impacted the world also affected this



project, as well. The Foundation is working to complete its new \$1.2 million fundraising target that will complete this project for our community. With your support, there is no challenge too large to overcome.

We are excited to complete the fundraising in 2022 and break ground during the summer before opening the new playground during Fall 2022!

We are so grateful to our sponsors & partners to make this inclusive playground a reality



Thank you to the following sponsors of Pearland's First Inclusive Playground who made commitments in 2021!

- **Special partner:** Inclusion Matters by Shane's Inspiration
- **Gold Sponsor:** Pearland Volunteer Fire Department
- **Silver Sponsors:** Christopher & Dana Reeve Foundation, TIRR Memorial Hermann Rehabilitation & Research
- **Champion Sponsors:** HCA Houston Healthcare Pearland, Tejas Imagery & Media Services, The Community Foundation of

Brazoria County, Davis Days Foundation, Rotary Club of Pearland

- **Partner Sponsors:** Mayor Kevin Cole, Dow Chemical Company, iRun Productions, Pearland Chinese Association (AYLUS), Pearland Police Officers Association, Sharon Prentice
- **Advocate Sponsors:** Bill and Janice Eisen, The Joe Miller Family, Vaughan Interests, Inc.

We want to thank the dozens of local businesses, families, and individual donors. We could not make this amazing facility possible without all of your support!

Having an impact on our community

Achieving our Foundation's most ambitious and largest-ever fundraising project in our history required an amazing level of commitment and engagement from our community. That's why our board created multiple opportunities to share the story about our mission and the impact our work has in the community, while cultivating opportunities for people to financially support these goals.

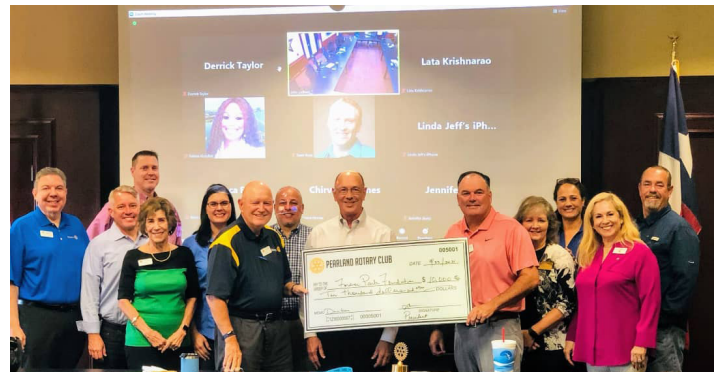
Pints for Parks

In July, we hosted what will become a signature event for the Forever Parks Foundation of Pearland with our Pints for Parks event at Vallenson's Brewing Company in Pearland. The event contributed more than \$13,000 of donations to help support our Inclusive Playground project. The event featured live music, kids activities, raffles, a silent auction, and special sponsor tables to show our appreciation for the generous support from the community. This will become an annual fundraising event for the Foundation that we are pleased to continue.



Tour de Lites

The Foundation was excited to continue the now 28 consecutive year tradition of the Tour De Lites holiday lights bicycle tour, which began in December in Independence Park and continued through neighboring communities, including Green Tee. The ticketed event included special contests for best-decorated bicycles and costumes.



And a big part of Tour de Lites is giving back, too. Thanks to generous donations from our sponsors, we were able to present 71 children from qualifying families with new bicycles during the event. We would like to thank the City of Pearland, Councilman Woody Owens, Pearland Parks and Recreation, Academy Sports and Outdoors and our generous sponsors Ardurra, Pepper Lawson Waterworks, GC Engineering, Reytec, CDM Smith, Freese and Nichols, and Terracon for their support.

Express Feedback for Good

With many community members limiting in-person interaction during the COVID-19 pandemic, we offered a unique way to financially support the Foundation in a virtual environment that could be done from anywhere in the world. We launched an Express Feedback for Good campaign, which enabled people to register to complete up to 75 surveys over a 30-day period and earn \$2 per completed survey that would be donated to the Foundation.

There were 172 participants who designated the Forever Parks Foundation of Pearland as their beneficiary organization, which helped generate \$11,696 in donations to the Foundation in 2021.



OUR COMMUNITY IMPACT



Our Foundation board members invested hundreds of hours to support and volunteer at various community events, whether it was staffing a table, preparing materials for race participants, or helping the children in our community literally plant seeds in potting soil just as community members helped plant the financial seed for our inclusive playground project to blossom.

During Friday nights in May and June, the Foundation met with residents during the Pearland Parks and Recreation Department's **Concerts in the Park** series to talk about our projects and offer up raffle prizes.

During the **Celebration of Freedom**, we offered children in the community the opportunity to grow their own impact by planting seeds in small potted containers and shared the plans for the inclusive playground at Shadow Creek Ranch Sports Complex.

During the **Trick or Treat Trail** event at Independence Park on Oct. 31, the



Foundation welcomed thousands of community members and handed out more than 3,000 pieces of candy.

This event sparked \$2,000 in donations as a direct result of the outreach about the inclusive playground.

The Foundation also helped assemble participant registration bags for Pearland **Turkey Trot**, which provides financial benefits to the Foundation through our partnership with iRun Productions.

FINANCIAL SUMMARY

2021 FINANCIAL SUMMARY

Opening Balance	\$ 16,207
Revenue	
Donations	\$ 25,438
Inclusive Playground Fundraising	\$ 136,716
Grants	\$ 40,000
Total Revenue	\$ 231,991
Expenses	
Projects	\$ 4,313
Operations	\$ 30,739
Total Expenses	\$ 35,052
Closing Balance	\$ 213,128

Our 2021 goals and future aspirations

In 2021, the Forever Parks Foundation of Pearland amplified its impact in the community by taking on its largest project, helping to fund Pearland's first inclusive playground. But it wasn't the only project we delivered in the year.

Financial Assistance

Our Foundation continued its goal of raising funds to help support underserved families in need of financial assistance to fully experience our community's parks programs.

After a full year with limited operations during the COVID-19 pandemic in 2020, the needs became greater in our community and we overdelivered on our commitment.

Our board approved a \$3,857 donation, which exceeded our annual \$2,500 target, to help support access for everyone to these important programs.

Operational Maturity

As the impact of the Foundation grew, so did our organizational maturity. In 2021, we implemented Bloomerang as our donor management system platform, which helps us to streamline our foundation's operations, ensure better communication with stakeholders, and provide a platform for secure online donation transactions.

This will provide a step-change in our development ability moving forward.

Board Development

Bloomerang also offers best practices and online development programs for our board members to learn how best to support the mission of the Foundation and to maximize their contribution to the community overall.

Our board members are also leveraging learning and development resources through our affiliation with the National Association of Parks Foundations, or NAPF, to stay informed about the latest trends and challenges facing parks foundations nationwide.



ACKNOWLEDGEMENTS

Our Partners

City of Pearland
Delores Fenwick Nature Center
Pearland Convention Center & Visitor's Bureau
Pearland Parks & Recreation
Pearland Police Department
Pearland Rotary Club
Inclusion Matters By Shane's Inspiration
Pearland Bicycles
Tejas Imagery and Media Services
iRun Productions

Our Sponsors

A&A Cleaning
Walter and Maria Albrecht
Mayor Kevin Cole
Community First E.R.
Helen Beckman
Friendly Faces
H-E-B
Houston Pink Box Food Truck
Nikki and Alex Kamkar
The Joe Miller Family
Pearland Bicycles
Pearland Parks and Recreation
Pearland Parks, Recreation & Beautification
Board
Pearland Pediatrics
Pearland Police Department
Douglas Reed, Realtor
Scooter's Coffee
Constable Buck Stevens
Tejas Imagery & Media Services
Texas Advantage Community Bank
Helen Todd
Vallensons' Brewing Co.
Vaughan Interests, Inc.

Our Donors

Edward and Lisa Albrecht	Daniel Matt	Childrens Doctors
Maria Albrecht	Joelene McKenzie	Community Foundation of Brazoria County
Karri Axtell	Sally Mercer	Coomer Ballet Conservatory
Jace Bauer	Thomas & Kelly Moody	Davis Days Foundation
Helen Beckman	Tiffany Needham	Dow Chemical
Cody Blalock	Geoff Nykin	EHRA ENGINEERING
Carry Capers	Leigh Otey	First United Methodist Church
Roy & Virginia Castillo	Sharon Prentice	HCA Houston Pearland
Daryl Catching	Chris & Kelly Robles	iRun Productions
Mona Chavarria	Sarah Salvato	Methodist Children's Program
Kevin Cole	David Schneider	Pearland 288 Animal Emergency Clinic
Chris & Michelle Coomer	Dennis Seith	Pearland Chinese Association
William Eisen	Joseph Shulke	Pearland Pediatric Dentistry
Jessica Gardner	MK & Travis Spiegelhauer	Pearland Pediatrics
Robert Gardner	Gayle Steinberg	Pearland Police Officers Association Charities Inc.
John Graham	Buck Stevens	Pearland Volunteer Fire Department
Bruce Honore	Nancy Ta	Perdue, Brandon, Fielder, Collins & Mott
Nikki Kamkar	Richard Vaughan	PRD Land Development
Janet Kelly	Jeff Webb	St. Andrew's Episcopal Church
John Kelly	Meredith Wheeler	Tejas Imagery & Media Services
JoAnne Knodel	James Wilson	The Rotary Club of Pearland
Karen Layton	Colby Wright	TIRR Memorial Hermann
Barbara Lenamon	Melissa Zilembo	
Gloria Milena Loewy	Above & Beyond Veterinary Hospital, INC.	
Sam Long	AYLUS Pearland	
Veronica Longoria	Camp Gladiator	
Sheila Lucas		

THANK YOU
for your incredible generosity & support!

Our Volunteers

AYLUS Pearland	Aila Jiang	Carol Li	Eric Qi	Juyan Chen	Sasha Kuzmenko
Mayor & First Lady Cole	Alvin Zheng	Catherine Bai	Eric Zhang	Kara Li	Sean Yu
Daryl Catching,	Andrew Du	Chen Wang	Ethan Gao	Karen Xu	Sharon He
Pearland Bicycles	Andy Gu	Derek Zhu	Evan Du	Kate Liu	Shouchen Liu
Pearland Police Department	Andy Jiang	Eddie Fu	Hannah Sang	Katlyn Zhuang	Sophia Fu
Seantele Foreman	Ashley Zhuang	Edwin Gao	James Jiang	Matthew Li	Thomas Liang
Scott Foreman	Ayyan Rehman	Edwin Ling	Jayden Lu	Matthew Niu	Yu Wang
Aaron Wu	Bharat Salvady	Elaine Zhu	Jonathan Niu	Michael Meng	Zide Liu
	Bing Bai	Eric Gao	Jordan Zheng	Richard Chen	