

Breaking Ground on the Future of Pearland Parks



FOREVER PARKS FOUNDATION
OF PEARLAND



Achieving our Biggest Milestones

To the City of Pearland, Parks & Recreation,
Administration and Council Members,

Several years ago upon its founding, the Forever Parks Foundation of Pearland set ambitious goals that would transform Pearland's parks to provide a premier experience for our community.

The Foundation has delivered positive change and improvements for our parks and recreation programs and facilities over the years, and now we are poised to open the largest-ever facility the Foundation has supported.

In September, we broke ground on Pearland's first all-inclusive playground at The Sports Complex at Shadow Creek Ranch.

The playground will be called Ed Thompson Inclusive Park, named after State Rep. Ed Thompson, who has been a tireless advocate for Pearland in the Texas state legislature as well as a longtime active supporter of so many causes in our community.

This exciting milestone fulfilled a vision and a long journey undertaken by so many people before us. One of those individuals is Kelly Moody, who served as President of the Forever Parks Foundation of Pearland as my immediate predecessor.

Kelly stepped down from her role on the Foundation board to take a position with Pearland's Parks and Recreation Department, where she will do full-time what she did so effectively and passionately as part of our board — advocate and support the ongoing development of parks and recreation programs and facilities right here in Pearland.

I think I speak for so many in our community when I say her contributions are why we were able to break ground on Ed Thompson Inclusive Park in 2022 and why we so anxiously look forward to its opening in 2023.

We also were fortunate to bring on board a new board member, Jay Merchant, who led the organization and execution of our first-ever Charity Golf Tournament, which was sponsored by Pearland Mayor Kevin Cole and benefitting our Inclusive Playground initiative.



Jeff Webb

And once again, we were humbled by the tireless efforts of our many volunteers to support our Foundation in pursuit of our mission. This includes our Board itself, whose passion for supporting Pearland's parks is inspiring to me every day.

Our charity golf tournament, when combined with our other fundraising initiatives, generous donors, and proud

sponsors helped push us to reach our fundraising goal for Pearland's first-ever all-inclusive playground.

On behalf of the Foundation's board, I would like to express my sincere thanks to the City of Pearland, its Parks department, and our volunteers, sponsors, and partners for their generous support.

As we look to the future, we are so excited to welcome Pearland's families to enjoy Ed Thompson Inclusive Park in 2023 and continue supporting the vital work we do to support parks and recreation in Pearland.

Jeff Webb
President
Forever Parks Foundation of Pearland

OUR GOVERNANCE

Our Foundation's mission

Our Mission is to partner with the City to establish premier parks, facilities, and programs in Pearland.

We are a group of community volunteers partnering with the City of Pearland Parks & Recreation sharing a common vision to enrich lives through the development of and accessibility to parks and recreation.

Together, with support of community partners, sponsors, donors, and volunteers we are working to establish supplemental income streams that will provide funding to expedite the development of parks, facilities, and programs to meet the needs and expectations of our residents.

2022-2023 Board of Directors

Executive Committee

Jeff Webb
President

Richard Vaughan
Vice President

Bianca Reed
Treasurer

Maria Albrecht
Secretary

Ex-Officio Board Members

Carry Capers
Director, Pearland Parks & Recreation

Dennis Jackson
Chair, Pearland Parks,
Recreation and
Beautification Board

Kelly Moody
Special Events & Development Manager
Pearland Parks & Recreation

Honorary Members

Lonzie Helms
Frank Ross
Fred Weary

Past Board Members and Ex-Officio Members

Beatrice Aguilera
Katie Daggett
Bunny Denton
Mike Doleski
Donald Hayes
Michelle Graham
Lata Krishnarao
Shuang Leng
Ted Mittica
Dustin Nitz
Jason O'Mara
Keith Ordeneauz
Dr. Christopher Orlea
Alicia Rodríguez
David Rosenthal
Kelly Shannon
Reagann Shulke



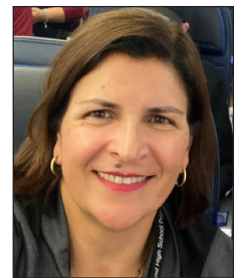
Jeff Webb



Richard Vaughan



Bianca Reed



Maria Albrecht



Lisa Cashbaugh-Sanchez



Bill Eisen



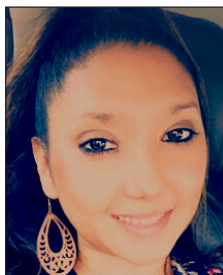
James Jiang



Nikki Kamkar



Kamra Kilmer



Olivia Quintanilla



JoAnne Knodel



David Schneider



Buck Stevens



Jay Merchant

Laying the Foundation for Inclusive Play

When the Pearland Parks and Recreation Department officially opened the Miracle League Field at The Sports Complex at Shadow Creek Ranch, shown at right, there was even more to announce for our community: The official plans for the new Ed Thompson Inclusive Park.

The Forever Parks Foundation of Pearland was proud to unveil the official artwork rendering of the playground design, as well as the interim sponsorship sign denoting those who had made generous and significant financial commitments and grants to bring the playground from plans on a page to actual reality.

We were excited to officially break ground on the playground in September of 2022, marking the official beginning of the construction that will lead to a planned opening of the playground in Spring 2023.

This effort was due to the incredible partnership with Inclusion Matters by Shane's Inspiration, that helped shepherd the process every step of the way and Lone Star Recreation, which was chosen to lead the equipment process.

The Foundation was proud to name the playground in honor of Texas State Representative Ed Thompson, who has a long record of service to the community and helped secure a \$750,000 grant from the Texas Parks and Wildlife Department for that helped the Foundation achieve its fundraising target of more than \$1.3 million for the program.

CenterPoint Energy became the playground presenting sponsor with a \$135,000 grant that represented a humbling gift to our community.

We are excited to cut the ribbon on Pearland's first all-inclusive playground in the Spring of 2023!



A New Way to Support Inclusive Play

What better way to support a goal of inclusive play in Pearland than to get out and play for a cause?

That's the idea that helped give birth to the Forever Parks Foundation of Pearland's inaugural Charity Golf Tournament chaired by Pearland Mayor Kevin Cole.

Mayor Cole has been a champion of the inclusive playground project from its inception, and a team of amazing volunteers came together to put on a charity golf tournament at Golfcrest Country Club on June 6, 2022, to raise funds and awareness for Pearland's first all-inclusive playground.

This effort brought in sponsorships and four-person teams from businesses throughout the region who, through their tournament participation, on-site donations, and live auction results, generated more than \$60,000 of net proceeds that directly support the new Ed Thompson Inclusive Park.



OUR COMMUNITY IMPACT

Pints for Parks Pours on the Foundation Fun

The Forever Parks Foundation of Pearland hosted a signature experience with our Pints for Parks event at Vallensons' Brewing Company in Pearland.

The event featured live music, kids activities, raffles, a silent auction, and special sponsor tables to show our appreciation for the generous support from the community that helped raise thousands of dollars supporting the Foundation's mission.

We are grateful for our generous sponsors and the support of Vallensons' Brewing Company once again!



Forever Parks Foundation of Pearland
2nd Annual
PINTS for PARKS
July 16, 2022

Special Thanks to our Host and Sponsors!

DIAMOND

Douglas Reed
REALTOR
(832)654-1801
douglasreed@vsn.com
www.douglasreed.vsn.com

PLATINUM
The Joe Miller Family

GOLD

PEARLAND PEDIATRICS
A SPORTS MEDICINE

campGladiator

VAUGHAN INTERESTS

Webb Brothers Holdings, LLC

SILVER

ED THOMPSON
FOR STATE REPRESENTATIVE

Friendly Faces
Senior Care
The Premier Senior Care Service

JW WASHINGTON

Bill and Janice Eisen

BRONZE
Tom and Kelly Moody

2022 FINANCIAL SUMMARY

Revenue

Contributions and Grants	\$ 356,284
Other Revenue	\$ 5,723
Total Revenue	\$ 362,007

Expenses

Other Expenses	\$ 238,673
Total Expenses	\$ 238,673

Net Assets or Fund Balances

Revenue less Expenses	\$ 123,334
Total Assets at End of Year	\$ 336,579
Total Liabilities at End of Year	\$ 100
Net Assets / Fund Balances at End of Year	\$ 336,479



Scoring Donations for New Disc Golf Course Baskets

The Forever Parks Foundation of Pearland partnered up with the Pearland Disc Golf Degenerates, a local group of enthusiastic and dedicated disc golf players, to raise funds for new baskets for the Centennial Park 9-hole disc golf course.

The baskets were installed in September, and a new course map sign, sponsor recognition, and additional upgrades to the course were planned to be implemented in 2023 as part of the project. Thank you to our hole sponsors and donors for your support with this project!

Riding for a Cause: 29th Annual Tour de Lites



The 29th annual Tour de Lites bicycle tour and hayride pedaled off from Independence Park in December, winding its way via guided police escort through neighboring communities, including Green Tee.

The Foundation was happy to provide a best-decorated bicycle contest for adults and children along with the tour for the ticketed event. Dozens upon dozens of kids, with their lights shining bright, made their way through the holiday decorations and got to enjoy hot chocolate and other donated goodies.

We are extremely thankful for our partners to put on this event, including the Pearland Parks and Recreation Department, Pearland Police Department, and Pearland Bicycles providing ride support.



Thank you to all of our
generous supporters, donors
and sponsors!



FOREVER PARKS FOUNDATION
O F P E A R L A N D