

Delivering Inclusive Play to the Pearland Community



FOREVER PARKS FOUNDATION
OF PEARLAND



Big Dreams, Big Achievement: Delivering Inclusive Play for Pearland



To our Foundation supporters and donors,

In 2023, we marked our eighth year in operation, and we celebrated with the community by unveiling the fruits of our biggest fundraising project to date – the opening of Ed Thompson Inclusive Park.

The vision of building this inclusive playground in Pearland is one of the things that prompted the creation of the Foundation in 2015.

In 2023, we completed the process of taking drawings on a page – ones informed by countless discussions and meetings with members of the community – and translated those into Pearland's newest playground, one that has the equipment, amenities and thoughtful design to include everyone in our community regardless of their developmental or mobility needs.

When we talk about our mission of creating premier parks facilities in Pearland, this is what that looks like in action.

To everyone who stepped forward to participate in our golf tournament, register for our Tour de Lites event, help with a sponsorship, support a grant application or spread the word about our mission – you played a critically important role in helping to achieve this largest project in our history.

I hope you take satisfaction when you visit Ed



Jeff Webb

Thompson Inclusive Park and see families enjoying this milestone facility for our community.

On behalf of the Foundation's board, I would like to express my sincere thanks to the City of Pearland, its Parks department, and our volunteers, sponsors, and partners for their generous support. I continue to be inspired by your dedication

and commitment to the community.

Moving forward, we look forward to the community enjoying Ed Thompson Inclusive Park and setting our sights on further enhancements to bring inclusive play to the parks in Pearland. This is critical work in our community, and we are so thankful for you helping us fulfill that mission in Pearland.

With my warmest thanks and best regards,

Jeff Webb
President
Forever Parks Foundation of Pearland

OUR GOVERNANCE

Our Foundation's mission

Our Mission is to partner with the City to establish premier parks, facilities, and programs in Pearland.

We are a group of community volunteers partnering with the City of Pearland Parks & Recreation sharing a common vision to enrich lives through the development of and accessibility to parks and recreation.

Together, with support of community partners, sponsors, donors, and volunteers we are working to establish supplemental income streams that will provide funding to expedite the development of parks, facilities, and programs to meet the needs and expectations of our residents.

2023-2024 Board of Directors

Executive Committee

Jeff Webb
President

Richard Vaughan
Vice President

David Schneider
Treasurer

Maria Albrecht
Secretary

Ex-Officio Board Members

Carry Capers
Director, Pearland Parks & Recreation

Dennis Jackson
Chair, Pearland Parks,
Recreation and
Beautification Board

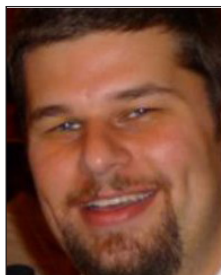
Kelly Moody
Special Events & Development Manager
Pearland Parks & Recreation

Honorary Members

Lonzie Helms
Frank Ross
Fred Weary

Past Board Members and Ex-Officio Members

Beatrice Aguilera
Katie Daggett
Bunny Denton
Mike Doleski
Donald Hayes
Michelle Graham
Lata Krishnarao
Shuang Leng
Ted Mittica
Dustin Nitz
Jason O'Mara
Keith Ordeneauz
Dr. Christopher Orlea
Bianca Reed
Alicia Rodriguez
David Rosenthal
Kelly Shannon
Reagann Shulke



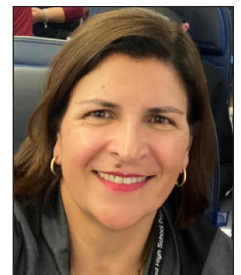
Jeff Webb



Richard Vaughan



David Schneider



Maria Albrecht



Lisa Cashbaugh-Sanchez



Bill Eisen



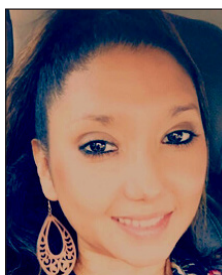
James Jiang



Nikki Kamkar



Kamra Kilmer



Olivia Quintanilla



JoAnne Knodel



Winter Netters



Buck Stevens



Jay Merchant



Celebrating a Day of Joy

Pearland's first inclusive playground debuts

On April 22, 2023, Pearland marked an important milestone in the lives of so many in our community: The ribbon-cutting and official grand opening of Ed Thompson Inclusive Park, Pearland's first all-abilities playspace.

The Forever Parks Foundation of Pearland raised more than \$1.36 Million between May 2021 and December 2022 through local, regional, state and national grants, sponsorships, donations, partnerships and events to make this dream become a reality for the Pearland community.

We welcomed CEO Tiffany Harris of Inclusion Matters by Shane's Inspiration, a group who worked tirelessly with the Foundation to build the plan and designs for Pearland's first inclusive playground.

Speakers also include Jamie Bianchi, whose daughter uses a wheelchair when she participates in Miracle League games and will be able to use the new playground to play with her



family.

And Edgar Pacheco shared thoughts during the ribbon-cutting event after having been an advisor to the Foundation on the impact of the playground for youth and families in our community.

During the event, we were able to recognize the sponsors who



SPOTLIGHT: ED THOMPSON INCLUSIVE PARK

generously contributed to make the playground a reality and who are permanently recognized on the monument outside Ed Thompson Inclusive Park.

And one of the most important guests at the ribbon-cutting event was the playground's namesake, Ed Thompson. He has served the community in many elected positions, but his impact has gone far beyond those roles to be a true leader for improving lives in our community.

Rep. Thompson championed the \$750,000 grant from the Texas Parks & Wildlife Department that made up a significant amount of the total project funding.

The playground represents the first step in our Inclusive Play initiative in Pearland, with our ultimate goal to bring more all-abilities facilities to our community.

We hope you join us on this journey to fulfill our mission.



Sponsor Recognition

Thank you to our key sponsors:

Presenting Sponsor

- CenterPoint Energy Foundation

Gold Sponsors

- Pearland Volunteer Fire Department
- Brazoria County Municipal Utility District 26
- Brazoria County Municipal Utility District 34
- Brazoria-Fort Bend County Municipal Utility District 1

Silver Sponsors

- TIRR Memorial Hermann Rehabilitation & Research
- Christopher & Dana Reeve Foundation (We-Go Swing 2021 First Cycle Direct Effect Quality of Life Grant)

Champion Sponsors

- HCA Houston Healthcare Pearland
- Davis Days Foundation
- The Community Foundation of Brazoria County
- Tejas Imagery & Media Services
- Mayor Kevin and Lisa Cole
- Rotary Club of Pearland
- iRun Productions



CHARITY GOLF TOURNAMENT

Golfers Swing Big for Inclusive Play

A full field of golfers set out on a shotgun start during a beautiful April morning. You might say they were swinging for swings.

For the second consecutive year, Mayor Kevin Cole chaired our Forever Parks Foundation of Pearland charity golf tournament at Golfcrest Country Club, with all proceeds going directly to support our Inclusive Play initiative. The 2023 event raised \$54,000, bringing the two-year total for golf tournament revenue to top \$110,000.

Each year, the tournament features a full round with foursome teams, an awards dinner, select contests at certain holes, a raffle and auction to help raise even more funds for inclusive play facilities in Pearland.

We are incredibly thankful for the number of players, sponsors, volunteers and staff who helped make this event another huge success!

Sponsor Recognition

Thank you to our key sponsors:

Forever Parks Headlining Sponsor

- Randy and Rachel Hall

Playground Sponsor

- Frontier Waste Solutions

Music Play Sponsor

- EHRA Engineering
- Binkley & Barfield
- LJA Engineers
- Stuart Consulting Group

We-Go Swing Sponsor

- Geoscience Engineering
- Cobb, Fendley & Associates

Golf Cart Sponsor

- Kelsey-Seybold Clinic

50/50 Raffle Sponsor

- Brint Construction

Awards Sponsor

- KIT Professionals



Driving Engagement through our Events

30th annual Tour de Lites is one of the many fun ways we serve Pearland

Throughout each year, the Forever Parks Foundation of Pearland engages the community across a range of events to build awareness of our mission, generate interest in our programs and goals, and to help secure donations that enable us to give back to our parks programs and facilities in the community.

Thanks to these engagements, we can fund things like the inclusive playground as well as our Financial Assistance Program, which provides \$5,000 each year to the Pearland Parks and Recreation Department to help offset costs of parks programs for those residents who qualify for assistance.

Tour de Lites

One of our key events each year is Tour de Lites, a guided bicycle tour and hayride that visits the Green Tee Terrace subdivision's holiday light displays. This was the 30th anniversary of this annual event. While severe lightning and the threat of thunderstorms caused the ride itself to be canceled, it didn't dampen the holiday spirits of participants who enjoyed the music, vendor tables, and the bike decorating contests before the event was



cut short. Riders were offered a free entry in next year's event to make up for the weather cancellation.

Running the Races

Thanks to our partnership with iRun Productions, the Forever Parks Foundation of Pearland is the benefiting nonprofit for the Pearland Half Marathon and Turkey Trot. This partnership generates \$5,000 of proceeds toward the Foundation's operations each year, and registrants in each event can choose to donate more to our organization.

Embracing Independence Park

We engaged the community across several events at Independence Park in 2023, including summer Pearland's Concerts in the Park series; our annual Celebration of Freedom event on July 4; Springfest; the annual Hometown Christmas Festival; and the first-ever Outdoors for All event, which brought together organizations and residents who want to find new ways to enjoy our parks and outdoor activities.



2023 FINANCIAL SUMMARY

Revenue

Contributions and Grants	\$ 235,959
Other Revenue	\$ 10,820
Total Revenue	\$ 246,779

Expenses

Playground Expenses	\$ 464,553
Other Expenses	\$ 72,467
Total Expenses	\$ 537,020

Net Assets or Fund Balances

Starting Assets at Start of Year	\$ 336,479
Revenue less Expenses	(\$ 290,241)
Total Assets at End of Year	\$ 46,438
Total Liabilities at End of Year	\$ 200
Net Assets / Fund	
Balances at End of Year	\$ 46,238

Forever Parks Foundation of Pearland

47-3392404

	2023	2022	Diff
REVENUE			
Contributions and grants.....	235,959	356,284	-120,325
Other revenue.....	10,820	5,723	5,097
Total revenue.....	246,779	362,007	-115,228
EXPENSES			
Other expenses.....	537,020	238,673	298,347
Total expenses.....	537,020	238,673	298,347
NET ASSETS OR FUND BALANCES			
Revenue less expenses.....	-290,241	123,334	-413,575
Total assets at end of year.....	46,438	336,579	-290,141
Total liabilities at end of year.....	200	100	100
Net assets/fund balances at end of year.	46,238	336,479	-290,241

Return of Organization Exempt From Income Tax

Under section 501(c), 527, or 4947(a)(1) of the Internal Revenue Code (except private foundations)

Do not enter social security numbers on this form as it may be made public.
Go to www.irs.gov/Form990 for instructions and the latest information.

2023**Open to Public Inspection**Department of the Treasury
Internal Revenue Service

A For the 2023 calendar year, or tax year beginning , 2023, and ending , 20	
B Check if applicable: <input type="checkbox"/> Address change <input type="checkbox"/> Name change <input type="checkbox"/> Initial return <input type="checkbox"/> Final return/terminated <input type="checkbox"/> Amended return <input type="checkbox"/> Application pending	C Forever Parks Foundation of Pearland 4141 Bailey Rd Pearland, TX 77584
D Employer identification number 47-3392404	E Telephone number 281 412-8900
G Gross receipts \$ 256,779.	
F Name and address of principal officer: Jeff Webb Same As C Above	
H(a) Is this a group return for subordinates? <input type="checkbox"/> Yes <input checked="" type="checkbox"/> No H(b) Are all subordinates included? <input type="checkbox"/> Yes <input type="checkbox"/> No If "No," attach a list. See instructions.	
I Tax-exempt status: <input checked="" type="checkbox"/> 501(c)(3) <input type="checkbox"/> 501(c) () (insert no.) <input type="checkbox"/> 4947(a)(1) or <input type="checkbox"/> 527	
J Website: N/A	
K Form of organization: <input checked="" type="checkbox"/> Corporation <input type="checkbox"/> Trust <input type="checkbox"/> Association <input type="checkbox"/> Other	
L Year of formation: 2014	M State of legal domicile: TX

Part I Summary	
Activities & Governance	1 Briefly describe the organization's mission or most significant activities: Our mission is to partner with the city to establish premier parks, facilities and programs in Pearland.
	2 Check this box <input type="checkbox"/> if the organization discontinued its operations or disposed of more than 25% of its net assets.
	3 Number of voting members of the governing body (Part VI, line 1a) 3 13
	4 Number of independent voting members of the governing body (Part VI, line 1b) 4 13
	5 Total number of individuals employed in calendar year 2023 (Part V, line 2a) 5 0
	6 Total number of volunteers (estimate if necessary) 6 20
	7a Total unrelated business revenue from Part VIII, column (C), line 12 7a 0.
b Net unrelated business taxable income from Form 990-T, Part I, line 11 7b 0.	
Revenue	8 Contributions and grants (Part VIII, line 1h) 356,284. 235,959.
	9 Program service revenue (Part VIII, line 2g)
	10 Investment income (Part VIII, column (A), lines 3, 4, and 7d)
	11 Other revenue (Part VIII, column (A), lines 5, 6d, 8c, 9c, 10c, and 11e) 5,723. 10,820.
	12 Total revenue — add lines 8 through 11 (must equal Part VIII, column (A), line 12) 362,007. 246,779.
Expenses	13 Grants and similar amounts paid (Part IX, column (A), lines 1-3)
	14 Benefits paid to or for members (Part IX, column (A), line 4)
	15 Salaries, other compensation, employee benefits (Part IX, column (A), lines 5-10)
	16a Professional fundraising fees (Part IX, column (A), line 11e)
	b Total fundraising expenses (Part IX, column (D), line 25) 1,103.
	17 Other expenses (Part IX, column (A), lines 11a-11d, 11f-24e) 238,673. 537,020.
	18 Total expenses. Add lines 13-17 (must equal Part IX, column (A), line 25) 238,673. 537,020.
19 Revenue less expenses. Subtract line 18 from line 12 123,334. -290,241.	
Net Assets or Fund Balances	20 Total assets (Part X, line 16) Beginning of Current Year 336,579. End of Year 46,438.
	21 Total liabilities (Part X, line 26) 100. 200.
	22 Net assets or fund balances. Subtract line 21 from line 20 336,479. 46,238.

Part II Signature Block

Under penalties of perjury, I declare that I have examined this return, including accompanying schedules and statements, and to the best of my knowledge and belief, it is true, correct, and complete. Declaration of preparer (other than officer) is based on all information of which preparer has any knowledge.

Sign Here	Signature of officer Jeff Webb		Date President	
	Type or print name and title			
Paid Preparer Use Only	Print/Type preparer's name Mark T Andersen	Preparer's signature Mark T Andersen	Date	Check <input checked="" type="checkbox"/> if self-employed PTIN P02264349
	Firm's name Know Your Numbers Accounting PLLC			Firm's EIN 82-5016607
	Firm's address 3203 Parker Drive Pearland, TX 77584			Phone no. 346-320-1300
	May the IRS discuss this return with the preparer shown above? See instructions <input checked="" type="checkbox"/> Yes <input type="checkbox"/> No			

2023 ANNUAL REPORT

Thank you to all of our
generous supporters, donors
and sponsors!



FOREVER PARKS FOUNDATION
OF PEARLAND