

# CCS7 SERIES

## Tilt Arms

### SPECIFICATIONS

#### APPLICATION

The CCS7 Series of Tilt Arms were designed to mount directly onto a 3-1/2" OD tenon to allow the mounting of the Techlight LSMT, CTL, CTA Series LED Tennis Fixtures. The arms were designed to provide an appropriate amount of extension over the playing surface to keep pole locations away from the playing boundaries.

#### CONSTRUCTION

The heavy-duty arm is constructed of steel tubing. Each arm provides approximately 1' of rise and 4' of extension towards the playing surface. CCS7 Tilt Arms are available in the following mounting configurations: Single, Double 70 (degree glyph), Double 90, Double 180, Quad 70 and Quad 90.

#### FINISH

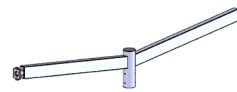
Super Durable Polyester powder coat finish is electrostatically applied in our state-of-the-art paint facility. Standard colors available: Black, Bronze, US Green, White. Custom colors available upon request.



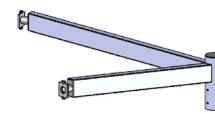
CENTER COURT  
**LIGHTING**



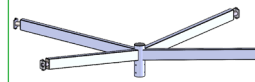
**CCS7-190**  
SINGLE TILT ARM



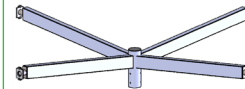
**CCS7-2180**  
DOUBLE TILT ARM  
AT 180°



**CCS7-270**  
DOUBLE TILT ARM  
AT 70°



**CCS7-470**  
QUAD TILT ARM  
AT 70°



**CCS7-490**  
QUAD TILT ARM  
AT 90°

### ORDERING INFORMATION

Choose the bold face options for the appropriate luminaire configuration for your application and enter on the line above each fixture attribute. Accessories may be factory installed, depending on the particular accessory chosen, but still be ordered as a separate line item.

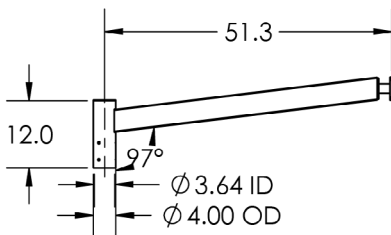
**EXAMPLE:**  
CCS7 190 BK

CCS7	190	BK
SERIES	REFLECTOR	FINISH
<b>CCS7</b>	<b>190</b> Single Arm <b>2180</b> Double Arm at 180° <b>270</b> Double Arm at 70° <b>470</b> Quad Arm at 70° <b>490</b> Quad Arm at 90°	<b>BK</b> Black <b>GR</b> US Green <b>GBK</b> Galvanized with Black Finish <b>GGR</b> Galvanized with US Green Finish

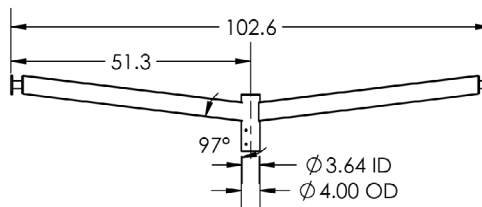
### AVAILABLE MOUNTING DIMENSIONS

Dimensions shown are for mounting arms only. Fixture body options must be ordered separately.

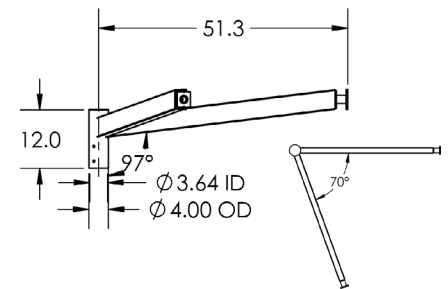
**CCS7-190**



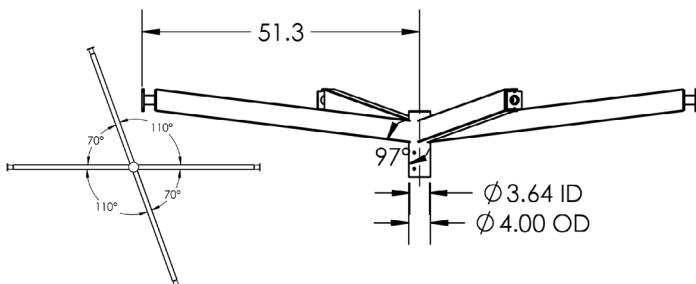
**CCS7-2180**



**CCS7-270**



**CCS7-470**



**CCS7-490**

