

DCLB SERIES

Die Cast Shoebox

SPECIFICATIONS

CONSTRUCTION

The housing and door frame are constructed of die cast aluminum. The flat tempered glass lens is sealed in place and a one-piece door gasket is provided for weather tight protection. ETL listed for wet locations.

OPTICAL SYSTEM

Made with a state of the art high performance reflectors that use high gloss components to achieve precise photometric distributions. The fixture is a full

cut-off light fixture and is Dark-Sky Friendly in a level horizontal position only.

ELECTRICAL SYSTEM

Available in 1000W standard metal halide and pulse-start metal halide. Comes standard with a 4KV pulse rated mogul base socket. Each 60HZ CWA multi-tap, 480V, or 5-tap ballast is pre-wired and installed for convenience. 50HZ ballast available upon request.

MOUNTING

Standard mounting options include single, twin 70° and 180°, quad 70° and 90° Davit and 7° Up Tilt Straight Arms. Additional mounting options may be available for custom applications.

FINISH

A Super Durable Polyester powder coat finish is electrostatically applied in our state of the art paint facility. Standard colors available: Black, Bronze, US Green, White. Custom colors available upon request.



CENTER COURT
LIGHTING

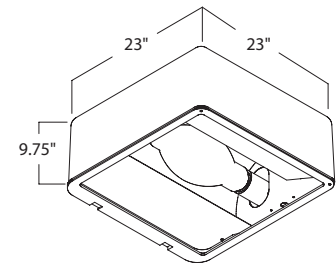


ORDERING INFORMATION

EXAMPLE: **DCLB3-G-P-1-PS-BK** (1000W Metal Halide, Multi-Tap, Pulse-Start, Black)

DCLB3	G	P	1	PS	BK
SERIES	REFLECTOR	WATTAGE	VOLTAGE	PULSE START	FINISH
	G = TYPE IV FORWARD THROW	P = 1000 MH	1 = Multi-Volt ^{1,2} 2 = 347~480v 3 = 5-TAP ²	PS = PULSE-START	BK Black BZ Bronze GR US Green WH White SP Special

DIMENSIONS



Fixture EPA (ft.²)-1.64 | Approx. Weight- 57 lbs.

EPA's (Ft.²)

Fixture Configuration	ARM MOUNT	
	Davit Arm	7° CCS Arm
1 @ 90°	3.64	3.70
2 @ 180°	7.00	6.64
2 @ 70°	5.99	6.35
4 @ 90° or 4 @ 70°	10.80	10.26

ACCESSORIES (Order Separately)

DAVIT ARMS

- Single Davit Arm
DV190
EPA: 2.00
- Double Davit Arm at 180°
DV2180
EPA: 3.72
- Double Davit Arm at 70°
DV270
EPA: 3.00
- Quad Davit Arm at 70°
DV470
Quad Davit Arm at 90°
DV490
EPA: 5.20

CCS 7° TILT ARMS

- Single Straight Arm with 7° Up Tilt
CCSVSA7-190
EPA: 2.06
- Double Straight Arm at 70° with 7° Up Tilt
CCSVSA7-270
EPA: 3.36
- Double Straight Arm at 180° with 7° Up Tilt
CCSVSA7-2180
EPA: 3.36
- Quad Straight Arm at 70° with 7° Up Tilt
CCSVSA7-470
Quad Straight Arm at 90° with 7° Up Tilt
CCSVSA7-490
EPA: 4.66

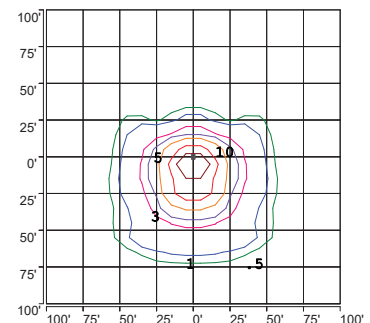
SHIELDS

- Large Back Side Shield
S111
- Large 3 Sided Back Side Shield
S114
- Large 2 Sided Back Side Shield
S120³
- Large Vandal Shield
S102

NOTES

- ¹ = Multi-Tap Ballast is 120V, 208V, 240V, & 277V.
- ² = Fixture is pre-wired for 240V. Alternate voltages will require field adjustment.
- ³ = S120 Shield must be specified as a left or right sided shield from the mounting side point of view.

PHOTOMETRY



ISOFOOTCANDLE PLOT:
DCLB3GP1 1000W MH CENTER COURT SERIES
23' AFG - 0 DEGREE TILT