

# COURT ACE SERIES - MEDIUM

High Lumen Medium LED Tennis Court Light



CENTER COURT  
LIGHTING

## SPECIFICATIONS

### APPLICATION

The Court Ace (CTA) Series of high output LED luminaires are designed for new outdoor sports lighting applications and to be a replacement for HID sports area lights. They are optimal for lighting applications where long life, low maintenance, and consistent color rendering is required.

### CONSTRUCTION

A compact, one-piece die cast housing. Saving costs versus models that are extruded or cast and require additional parts. The heat sink is included in the actual casting, further minimizing the need for additional parts. Standard Arm Mount features an integral arm compatible with our SSA drilled Techlight poles, increasing strength and simplifying installation. Each fixture can accommodate an optional twist-lock photocell which allows for further energy savings and an optional PIR motion sensor allows for security. The high lumen output allows the fixture to be used for general area or tennis lighting

applications. CTA-M optics are Full Cutoff design. The new CTA-M LED Tennis Court Light delivers maximum value by providing significant energy savings, long life and outstanding photometric performance at an affordable price. The CTA-M delivers 20,000 to 45,000 lumens allowing it to replace up to 1000W HID luminaires.

### OPTICAL SYSTEM

Made with a state of the art UV stabilized acrylic high performance refractive optical assemblies that use high transmissivity materials to achieve precise photometric distributions.

### ELECTRICAL SYSTEM

Available in up to a 45,000 nominal lumens in most optical distributions with either 4000K Neutral White or 5000K Cool White color temperatures. Universal input voltage 120-277Vac, 50/60Hz; 347/480Vac. Operating temperature range -40°C to 40° C.

### MOUNTING

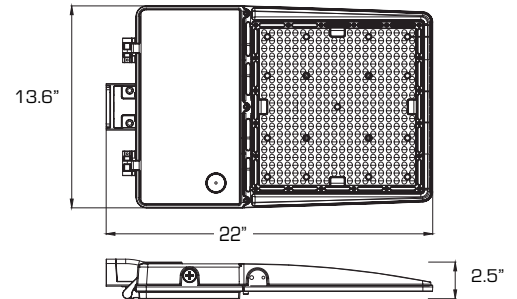
Available with several or multiple unique mountings, specifically designed to provide one-for-one, and in some cases two-for-one, solutions for replacing existing metal halide or high pressure sodium lighting. Features an integral universal mounting mechanism that allows the luminaire to be easily mounted on most existing drill hole patterns including SSA drilled Techlight poles. This provides significant labor savings. An easy-access door on the bottom of mounting arm allows for wiring without opening the electrical compartment. A mast arm adaptor, adjustable integral slip fitter and other mounting configurations are available.

### FINISH

Heavy-duty housing is constructed of cast aluminum is epoxy e-coated with corrosion resistant polyester powder coat finish. Standard colors available: Black, Bronze, US Green, White. Custom colors available upon request.



## DIMENSIONS



## ORDERING INFORMATION

EXAMPLE: CTA-M-C-20L-T4-1-GR-IMS

CTA-M	C	20L	T4	1	GR	IMS
SERIES	COLOR TEMP	NOMINAL LUMENS	OPTICS	VOLTAGE	FINISH	OPTIONS
	N = Neutral White (4000K) C = Cool White (5000K)	20L = 20,000 Lumens 25L = 25,000 Lumens 30L = 30,000 Lumens 35L = 35,000 Lumens 40L = 40,000 Lumens 45L = 45,000 Lumens	T3 = Type III T4 = Type IV T5W = Type V Wide	1 = Multi-Volt* 2 = 347~480V (HV)	BK = Black BZ = Bronze GR = US Green WH = White SP = Special <sup>2</sup>	BTEC <sup>3</sup> = Integrated Bluetooth Control Module Casambi Ready Mesh Network IMS = Fixture Mount Passive Infrared Motion Sensor (IMS Lenses Below, Ordered Separately) TLWSFSP-L3 = 360° lens, maximum coverage 40' diameter from 20' height (IMS) TLWSFSP-L7 = 360° lens, maximum coverage 100' diameter from 40' height (IMS) PCR7 = 7-Pin Twist-Lock Photocell receptacle ANSIC136.41 with Shorting Cap

## ACCESSORIES (Order Separately)

TLWSFSIR-100	Remote Handheld Sensor Configuration Tool for IMS
PC2	347-480V Twist-Lock Photocell
PC7	Multi-Tap (105-285V) Twist Lock Photocell
CER100 <sup>4</sup>	Wireless Repeater
QMB-WM	Quick Mount Bracket - Wall Mount
Fusing Options	(See page 2)

## ARMS (Order Separately)

### CCS 7° TILT ARMS

	Single Straight Arm with 7° Up Tilt <b>CCS-190</b> EPA: 1.8 29 lbs.
	Double Straight Arm at 180° with 7° Up Tilt <b>CCS-2180</b> EPA: 3.4 49 lbs.
	Double Straight Arm at 70° with 7° Up Tilt <b>CCS-270</b> EPA: 2.8 49 lbs.
	Quad Straight Arm at 70° with 7° Up Tilt <b>CCS-470</b>
	Quad Straight Arm at 90° with 7° Up Tilt <b>CCS-490</b> EPA: 3.75 89 lbs.

### DAVIT ARMS

	Single Davit Arm <b>DV190</b> EPA: 0.9 51 lbs.
	Double Davit Arm at 180° <b>DV2180</b> EPA: 1.4 83 lbs.
	Double Davit Arm at 70° <b>DV270</b> EPA: 1.1 83 lbs.
	Quad Davit Arm at 70° <b>DV470</b>
	Quad Davit Arm at 90° <b>DV490</b> EPA: 1.6 145 lbs.

## NOTES

- 1 = Multi-Volt is an auto ranging power supply from 100V to 300V input.
- 2 = Custom RAL color matching is available. Contact your sales representative for additional info.
- 3 = Control Modules are installed and luminaires are commissioned at the factory. Lighting control system via the Casambi app for Apple iOS and Android devices provides diverse functionality for a control hierarchy capable of managing multiple schedules and scenes and incorporating a variety of energy saving accessories. \*STGA7L (Wi-Fi ready tablet/Gateway Samsung Tab A7 Lite) is required as a gateway and can be purchased from a local retailer or online.
- 4 = For extended range greater than 150ft between BT Mesh Network connections.

\*STGA7L = Enables remote access using the Gateway and Sites functionality in the Casambi App. Automatically restores network control settings and provides automatic time back up for the mesh network. This is required as a gateway and can be purchased from a local retailer or online.

Slide Mount Adaptor (CTA SM) must be used in conjunction with any of the arms above to properly mount CTA fixture. Please identify the color preferred for the slide mount adaptor represented by "XX" at the end of the part number. (CTA SM XX) - XX can be any of the Finishes indicated in the ordering chart: BK, BZ, GR, WH, or SP.



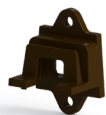
www.centercourtlighting.com | 800.225.0727

REV: 20250723-05

# COURT ACE SERIES - MEDIUM

High Lumen Medium LED Tennis Court Light

## ACCESSORIES (Order Separately)



**CTA SM**  
Slide Mount Adaptor  
(Required to Mount to Arms)



**BTEC<sup>3</sup>**  
Integrated Bluetooth  
Control Module  
Casambi Ready Mesh  
Network



**PCR7**  
7-Pin Twist-Lock Photocell  
Receptacle ANSI C136.41 and  
Receptacle Shorting Cap  
(Factory Installed)



**STGA7L**  
Wi-Fi Ready Tablet /  
Gateway Samsung Tab  
A7 Lite



**PC7**  
Multi-Tap (105-285V) Twist-  
Lock Photocell

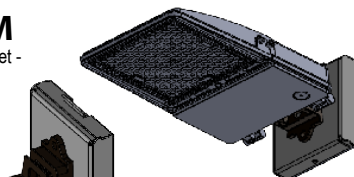
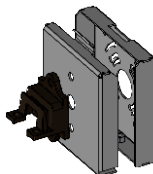


**CER100<sup>4</sup>**  
Wireless Repeater

## QMB-WM

Quick Mount Bracket -  
Wall Mount

Exploded View



QMB-WM w/ Fixture

Assembled View

## LUMINAIRE CHARACTERISTICS

Data below is for Cool White (5000K) and Natural White (4000K)

Nominal Lumens	System Wattage	Delivered Lumens/Optic Type						System Wattage	L70 @ 25°C	Amperage Draw				
		TYPE III		TYPE IV		TYPE 5W				120V	208V	277V	347V	480V
		Lumens	Lm/W	Lumens	Lm/W	Lumens	Lm/W							
20L	117W	20,475	175	20,416	174	20,358	174	117W	>50K Hrs.	0.98A	0.56A	0.42A	0.34A	0.24A
25L	148W	25,160	170	25,012	169	25,160	169	148W	>50K Hrs.	1.23A	0.71A	0.53A	0.43A	0.31A
30L	185W	30,340	164	30,320	164	30,360	164	185W	>50K Hrs.	1.54A	0.89A	0.67A	0.53A	0.39A
35L	223W	35,234	158	35,457	159	35,450	159	223W	>50K Hrs.	1.90A	1.07A	0.81A	0.64A	0.46A
40L	262W	40,095	153	40,086	153	40,348	154	262W	>50K Hrs.	2.20A	1.26A	0.95A	0.76A	0.55A
45L	301W	44,247	147	44,230	147	44,849	149	301W	>50K Hrs.	2.50A	1.45A	1.09A	0.87A	0.63A

## FUSING OPTIONS

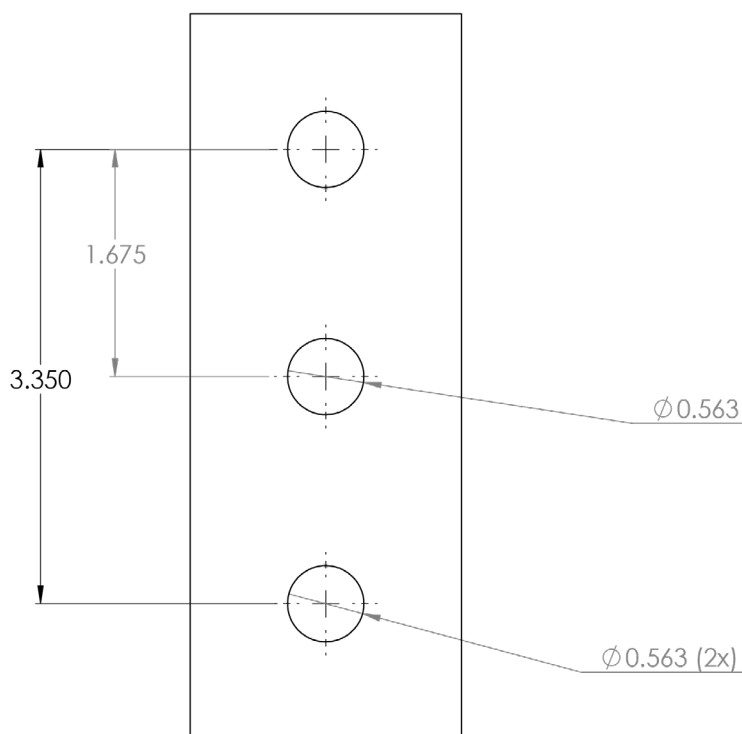
Single Fusing	(120V)
Single Fusing	(277V)
Double Fusing	(208V, 240V)
Double Fusing	(480V)
Double Fusing	(374V)

## EPA's (Ft.<sup>2</sup>)

Fixture Configuration	CCS7 ARM <sup>5</sup>	DAVIT ARM <sup>5</sup>
1 @ 90°	2.1	1.2
2 @ 180°	4.0	2.0
2 @ 70°	3.4	1.8
3 @ 90°	4.5	2.4
4 @ 90° or 4 @ 70°	5.0	2.9

<sup>5</sup> = EPA's shown include both the fixture and the mounting apparatus.

## SSA Drill Measurements



# COURT ACE SERIES - MEDIUM

## High Lumen Medium LED Tennis Court Light

### FIXTURE MOUNT MOTION SENSOR (IMS)

**APPLICATION** — The sensor is ideal for areas such as parking facilities, gas stations, pedestrian pathways, and warehouses. A choice of four lenses ensures complete coverage for mounting heights up to 40'.

**OPERATION** — Typically, the sensor ramps lighting On to the selected High mode level when motion is detected and the ambient light level is below the hold off setpoint. After the sensor stops detecting movement and the time delay elapses, lights fade to the Low mode level. If there is no motion during the subsequent cut off time delay, the lights will turn Off. For dusk to dawn control, the integral photocell can switch the lights On and Off based on the ambient light level so that lighting remains on overnight even without motion detection.

#### FEATURES —

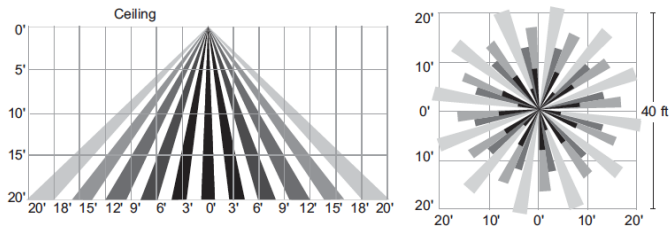
- Provides line voltage On/Off switching
- High and low modes fully adjustable from 0 to 10V
- Optional cut off delay
- Adjustable ramp up and fade down times
- Optional daylighting setpoints feature automatic calibration, or permit manual adjustment
- Polycarbonate construction; flame retardant, UV resistant, impact resistant, recyclable
- UL244A and UL508



### MOTION SENSOR LENSES FIELD OF VIEW

#### TLWSFSP-L3

360° lens, maximum coverage 40' diameter from 20' height



#### TLWSFSP-L7

360° lens, maximum coverage 100' diameter from 40' height

