

# CENTER COURT PRO

Vertical Burn Shoebox

## SPECIFICATIONS

### CONSTRUCTION

The fixture housing is constructed of durable formed aluminum with all seams welded and sealed to withstand the harshest of environments. The flat tempered glass lens is sealed in place and a one-piece door gasket is provided for weather tight protection. ETL listed for wet locations.

### OPTICAL SYSTEM

State of the art Enhanced High Performance Reflector uses specular faceted high gloss components and a tempered

flat lens which utilizes the highest light transmission glass technology for the best optics in the industry. The lamp is oriented vertically for maximum life and efficiency. It is Dark-Sky Friendly in a level horizontal position only.

### ELECTRICAL SYSTEM

Available in 450 thru 1000W standard metal halide and pulse-start metal halide. Comes standard with 4KV pulse rated mogul base sockets. Each 60HZ CWA multi-tap, 480V, or 5-tap ballast is pre-wired and installed for convenience. 50HZ ballast

available upon request.

### MOUNTING

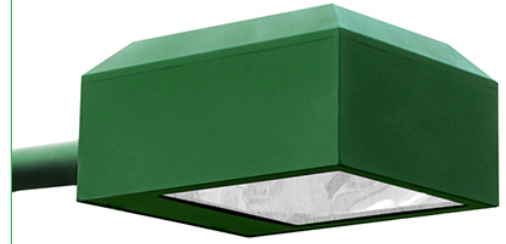
Standard mounting options include single, twin 70° and 180°, quad 70° and 90° Davit and 7° Up Tilt Straight Arms.

### FINISH

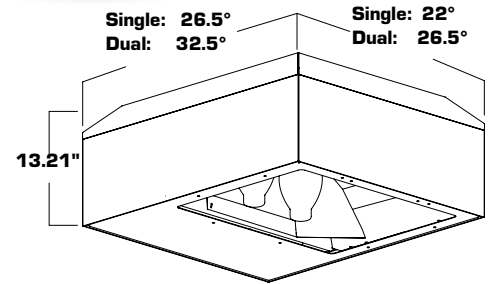
A Super Durable Polyester powder coat finish is electrostatically applied in our state of the art paint facility. Standard colors available: Black, Bronze, US Green, White. Custom colors available upon request.



CENTER COURT  
LIGHTING



## DIMENSIONS



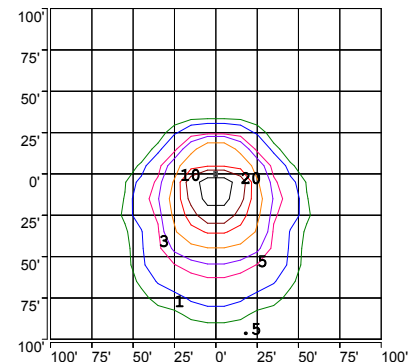
Single Fixture EPA (ft.2)-2.50 | Approx. Weight- 65 lbs.

Dual Fixture EPA (ft.2)-3.00 | Approx. Weight- 95 lbs.

## EPA'S (Ft.²)

Fixture Configuration	ARM MOUNT EPA			
	Davit Arm		7° CCS Arm	
	Single Hsg	Dual Hsg	Single Hsg	Dual Hsg
1 @ 90°	4.5	5.0	4.56	5.06
2 @ 180°	8.72	9.72	8.36	9.36
2 @ 90°	7.55	8.46	7.91	8.82
4 @ 90° or 4 @ 70°	13.73	15.43	13.19	14.89

## PHOTOMETRY



ISOFOOTCANDLE PLOT:  
LSBVG1A1 1000W MH CENTER COURT SERIES  
23' AFG - 0 DEGREE TILT

## ORDERING INFORMATION

EXAMPLE: **LSBV-G-1-A-1-PS-BK** (1000W Metal Halide, Multi-Tap, Single Lamp, Pulse-Start, Black)

LSBV	G	1	A	1	PS	GR
SERIES	REFLECTOR	WATTAGE	VOLTAGE	LAMP	PULSE-START	FINISH
	<b>G</b> Type IV Premium Forward Throw	<b>1</b> 1000 MH <b>6</b> 775 PSMH <b>10</b> 575 PSMH <sup>3</sup> <b>7</b> 450 PSMH <b>11</b> 875 PSMH	<b>A</b> Multi-Tap <sup>1,2</sup> <b>B</b> 480V <b>C</b> 5-Tap <sup>2</sup>	<b>1</b> Single <b>2</b> Dual	<b>PS</b> Pulse-Start	<b>BK</b> Black <b>BZ</b> Bronze <b>GR</b> US Green <b>WH</b> White <b>SP</b> Special

## ACCESSORIES (Order Separately)

### CCS 7° TILT ARMS

- Single Straight Arm with 7° Up Tilt  
**CCS-190**  
EPA: 2.06 29 lbs.
- Double Straight Arm at 180° with 7° Up Tilt  
**CCS-2180**  
EPA: 3.36 49 lbs.
- Double Straight Arm at 70° with 7° Up Tilt  
**CCS-270**  
EPA: 3.36 49 lbs.
- Quad Straight Arm at 70° with 7° Up Tilt  
**CCS-470**
- Quad Straight Arm at 90° with 7° Up Tilt  
**CCS-490**  
EPA: 4.66 89 lbs.

### DAVIT ARMS

- Single Davit Arm  
**DV190**  
EPA: 2.00 51 lbs.
- Double Davit Arm at 180°  
**DV2180**  
EPA: 3.72 83 lbs.
- Double Davit Arm at 70°  
**DV270**  
EPA: 3.00 83 lbs.
- Quad Davit Arm at 70°  
**DV470**
- Quad Davit Arm at 90°  
**DV490**  
EPA: 5.20 145 lbs.



Adjustable Knuckle Fitter  
**3AF**  
(To be used in conjunction with DV or CCS arm to aid in fixture levelling)

## NOTES

- <sup>1</sup> = Multi-Tap Ballast is 120V, 208V, 240V, & 277V.
- <sup>2</sup> = Fixture is pre-wired for 240V. Alternate voltages will require field adjustment.
- <sup>3</sup> = 575W utilizes the Venture Super Pulse Start Long Life Lamp (40,000 hrs).



www.centercourtlighting.com | 800.225.0727