

# COURT ACE SERIES - LARGE

## High Lumen Large LED Tennis Court Light



CENTER COURT  
LIGHTING

### SPECIFICATIONS

#### APPLICATION

The Court Ace (CTA) Series of high output LED luminaires are designed for new outdoor sports lighting applications and to be a replacement for HID sports area lights. They are optimal for lighting applications where long life, low maintenance, and consistent color rendering is required.

#### CONSTRUCTION

A compact, one-piece die cast housing. Saving costs versus models that are extruded or cast and require additional parts. The heat sink is included in the actual casting, further minimizing the need for additional parts. Standard Arm Mount features an integral arm compatible with our SSA drilled Techlight poles, increasing strength and simplifying installation. Each fixture can accommodate an optional twist-lock photocell which allows for further energy savings and an optional PIR motion sensor allows for security. The high lumen output allows the fixture to be used for general area or tennis lighting

applications. CTA-L optics are Full Cutoff design. The new CTA-L LED Tennis Court Light delivers maximum value by providing significant energy savings, long life and outstanding photometric performance at an affordable price. The CTA-L delivers 45,000 to 80,000 lumens.

#### OPTICAL SYSTEM

Made with a state of the art UV stabilized acrylic high performance refractive optical assemblies that use high transmissivity materials to achieve precise photometric distributions.

#### ELECTRICAL SYSTEM

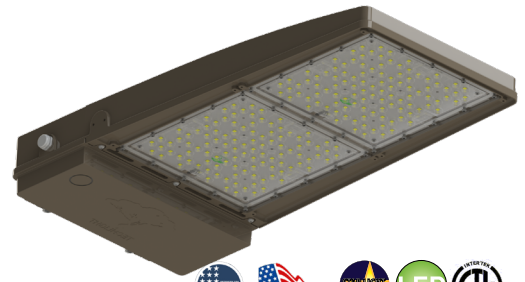
Available in up to a 80,000 nominal lumens in most optical distributions with either 4000K Neutral White or 5000K Cool White color temperatures. Universal input voltage 120-277Vac, 50/60Hz; 347/480Vac. Operating temperature range -40°C to 40°C.

#### MOUNTING

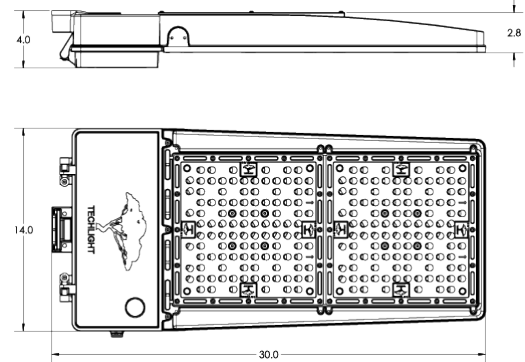
Available with several or multiple unique mountings, specifically designed to provide one-for-one, and in some cases two-for-one, solutions for replacing existing metal halide or high pressure sodium lighting. Features an integral universal mounting mechanism that allows the luminaire to be easily mounted on most existing drill hole patterns including SSA drilled Techlight poles. This provides significant labor savings. An easy-access door on the bottom of mounting arm allows for wiring without opening the electrical compartment. A mast arm adaptor, adjustable integral slip fitter and other mounting configurations are available.

#### FINISH

Heavy-duty housing is constructed of cast aluminum is epoxy e-coated with corrosion resistant polyester powder coat finish. Standard colors available: Black, Bronze, US Green, White. Custom colors available upon request.



### DIMENSIONS



### ORDERING INFORMATION

EXAMPLE: CTA-L-C-80L-T4T-1-GR-BTEC

CTA-L	C	80L	T4T	1	GR	BTEC
SERIES	COLOR TEMP	NOMINAL LUMENS	OPTICS	VOLTAGE	FINISH	OPTIONS
	C = Cool White (5000K) N = Neutral White (4000K)	45L = 45,000 Lumens 50L = 50,000 Lumens 55L = 55,000 Lumens 60L = 60,000 Lumens 65L = 65,000 Lumens 70L = 70,000 Lumens 75L = 75,000 Lumens 80L = 80,000 Lumens	T3 = Type III T4 <sup>S</sup> = Type IV T4T <sup>S</sup> = Type IV Tennis T5M = Type V Medium T5W = Type V Wide	1 = Multi-Volt <sup>1</sup> 2 = 347~480v (HV)	BK = Black BZ = Bronze GR = US Green WH = White SP = Special <sup>2</sup>	BTEC <sup>3</sup> = Integrated Bluetooth Control Module Casambi Ready Mesh Network IMS = Fixture Mount Passive Infrared Motion Sensor (IMS Lenses Below, Ordered Separately) TLWSFSP-L3 = 360° lens, maximum coverage 40' diameter from 20' height (IMS) TLWSFSP-L7 = 360° lens, maximum coverage 100' diameter from 40' height (IMS) PCR7 = 7-Pin Twist-Lock Photocell receptacle ANSIC136.41 with Shorting Cap

### ACCESSORIES (Order Separately)

TLWSFSIR-100	Remote Handheld Sensor Configuration Tool for IMS
PC2	347-480V Twist-Lock Photocell
PC7	Multi-Tap (105-285V) Twist Lock Photocell
CER100 <sup>4</sup>	Wireless Repeater
S269BK	3 Sided Shield for 45L - 80L
S270BK	House Shield for 45L - 80L
Fusing Options	(See page 2)

### ARMS (Order Separately)

#### CCS 7° TILT ARMS

	Single Straight Arm with 7° Up Tilt <b>CCS-190</b> EPA: 1.8 29 lbs.
	Double Straight Arm at 180° with 7° Up Tilt <b>CCS-2180</b> EPA: 3.4 49 lbs.
	Double Straight Arm at 70° with 7° Up Tilt <b>CCS-270</b> EPA: 2.8 49 lbs.
	Quad Straight Arm at 70° with 7° Up Tilt <b>CCS-470</b>
	Quad Straight Arm at 90° with 7° Up Tilt <b>CCS-490</b> EPA: 3.75 89 lbs.

#### DAVIT ARMS

	Single Davit Arm <b>DV190</b> EPA: 0.9 51 lbs.
	Double Davit Arm at 180° <b>DV2180</b> EPA: 1.4 83 lbs.
	Double Davit Arm at 70° <b>DV270</b> EPA: 1.1 83 lbs.
	Quad Davit Arm at 70° <b>DV470</b>
	Quad Davit Arm at 90° <b>DV490</b> EPA: 1.6 145 lbs.

### NOTES

- 1 = Multi-Volt is an auto ranging power supply from 100V to 300V input.
- 2 = Custom RAL color matching is available. Contact your sales representative for additional info.
- 3 = Control Modules are installed and luminaires are commissioned at the factory. Lighting control system via the Casambi app for Apple iOS and Android devices provides diverse functionality for a control hierarchy capable of managing multiple schedules and scenes and incorporating a variety of energy saving accessories. \*STGA7L (Wi-Fi ready tablet/Gateway Samsung Tab A7 Lite) is required as a gateway and can be purchased from a local retailer or online.
- 4 = For extended range greater than 150ft between BT Mesh Network connections.
- 5 = [55L-80L in T4, T4T] come standard with the CTA-SM + HDW Kit and C35 extended 35' long cord.

\*STGA7L = Enables remote access using the Gateway and Sites functionality in the Casambi App. Automatically restores network control settings and provides automatic time back up for the mesh network. This is required as a gateway and can be purchased from a local retailer or online.

Slide Mount Adaptor (CTA SM) must be used in conjunction with any of the arms above to properly mount CTA fixture. Please identify the color preferred for the slide mount adaptor represented by "XX" at the end of the part number. (CTA SM XX) - XX can be any of the Finishes indicated in the ordering chart: BK, BZ, GR, WH, or SP.



# COURT ACE SERIES - LARGE

High Lumen Large LED Tennis Court Light

## LUMINAIRE CHARACTERISTICS

Nominal Lumens	Delivered Lumens and Wattage/Optic Type														
	TYPE III			TYPE IV			TYPE 4T			TYPE 5M			TYPE 5W		
	Lumens	Wattage	Lm/W	Lumens	Wattage	Lm/W	Lumens	Wattage	Lm/W	Lumens	Wattage	Lm/W	Lumens	Wattage	Lm/W
45L	44,638	269W	166	45,604	269W	170	46,717	269W	174	46,499	269W	173	47,344	269W	176
50L	49,856	304W	164	51,072	304W	168	51,984	304W	171	51,984	304W	171	52,592	304W	173
55L	55,080	340W	162	56,440	340W	166	57,120	340W	168	57,460	340W	169	57,800	340W	170
60L	60,160	376W	160	61,664	376W	164	62,040	376W	165	62,416	376W	166	62,792	376W	167
65L	65,096	412W	158	66,332	412W	161	67,156	412W	163	67,516	412W	163	67,980	412W	165
70L	69,888	448W	156	70,784	448W	158	72,128	448W	161	71,680	448W	160	73,024	448W	163
75L	74,052	484W	153	75,170	484W	155	76,956	484W	159	75,998	484W	157	77,924	484W	161
80L	78,351	520W	151	79,560	520W	153	81,560	520W	157	80,600	520W	155	82,575	520W	159

System Wattage	L70 @ 25°C	Amperage Draw				
		120V	208V	277V	347V	480V
269W	>50K Hrs.	2.25	1.3	0.97	0.78	0.56
304W	>50K Hrs.	2.53	1.46	1.1	0.88	0.63
340W	>50K Hrs.	2.83	1.63	1.23	0.98	0.71
376W	>50K Hrs.	3.13	1.81	1.36	1.08	0.78
412W	>50K Hrs.	3.43	1.98	1.49	1.19	0.86
448W	>50K Hrs.	3.73	2.15	1.62	1.29	0.93
484W	>50K Hrs.	4.03	2.33	1.75	1.39	1.01
520W	>50K Hrs.	4.33	2.5	1.88	1.5	1.08

### Fusing Choices

Single Fusing (120V)

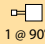
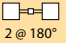
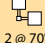
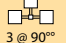
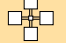
Single Fusing (277V)

Double Fusing (208V, 240V)

Double Fusing (480V)

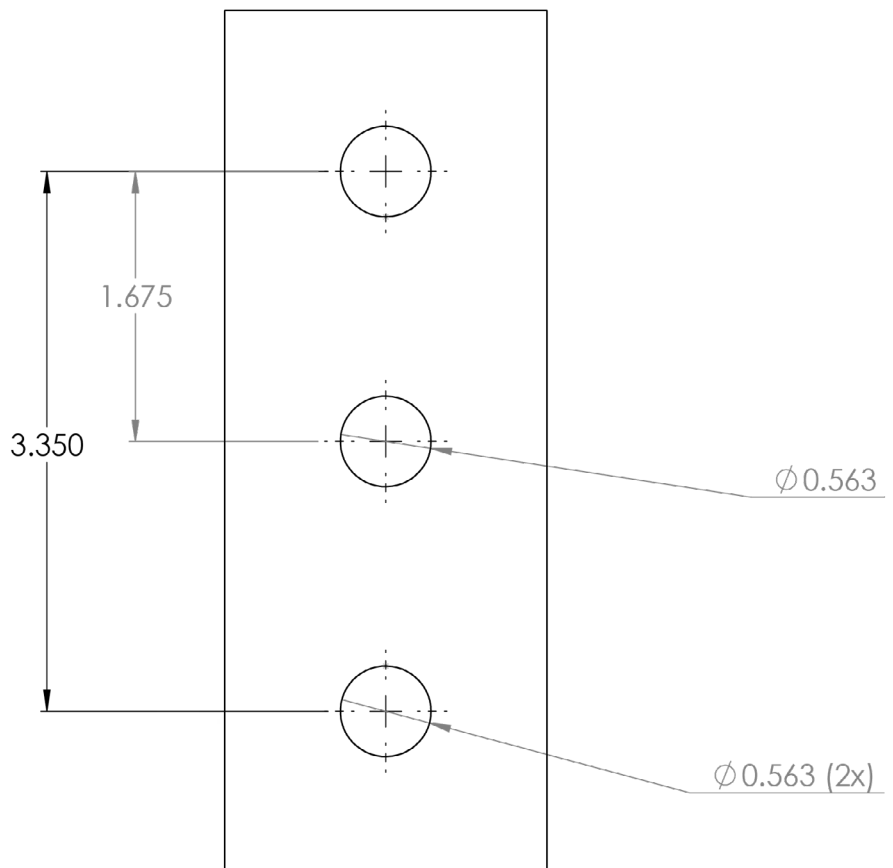
Double Fusing (374V)

### EPA's (Ft.<sup>2</sup>)

Fixture Configuration	CCS7 ARM <sup>7</sup>	DAVIT ARM <sup>7</sup>
 1 @ 90°	<b>2.5</b>	<b>1.6</b>
 2 @ 180°	<b>4.8</b>	<b>2.8</b>
 2 @ 70°	<b>3.8</b>	<b>2.2</b>
 3 @ 90°	<b>5.5</b>	<b>3.4</b>
 4 @ 90° or 4 @ 70°	<b>6.0</b>	<b>3.9</b>

<sup>7</sup> = EPA's shown include both the fixture and the mounting apparatus.

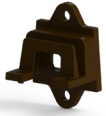
### SSA Drill Measurements



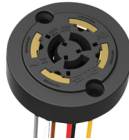
# COURT ACE SERIES

High Lumen Large LED Tennis Court Light

## ACCESSORIES (Order Separately)



**CTA SM**  
Slide Mount Adaptor  
(Required to Mount to Arms)



**PCR7**  
7-Pin Twist-Lock Photocell  
Receptacle ANSI C136.41 and  
Receptacle Shorting Cap  
(Factory Installed)



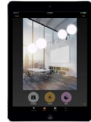
**PC7**  
Multi-Tap (105-285V) Twist-  
Lock Photocell

### PC2

480V Twist-Lock Photocell



**BTEC**  
Integrated Bluetooth  
Control Module  
Casambi Ready Mesh  
Network

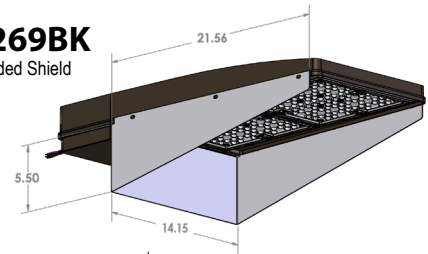


**STGA7L**  
Wi-Fi Ready Tablet /  
Gateway Samsung Tab  
A7 Lite

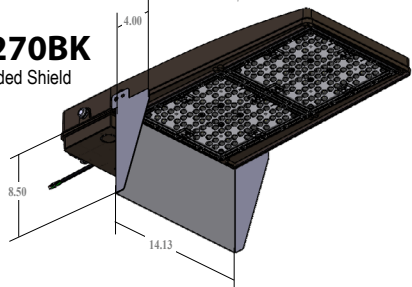


**CER100**  
Wireless Repeater

**S269BK**  
3 Sided Shield



**S270BK**  
3 Sided Shield



## FIXTURE MOUNT MOTION SENSOR (IMS)

**APPLICATION** — The sensor is ideal for areas such as parking facilities, gas stations, pedestrian pathways, and warehouses. A choice of four lenses ensures complete coverage for mounting heights up to 40'.

**OPERATION** — Typically, the sensor ramps lighting On to the selected High mode level when motion is detected and the ambient light level is below the hold off setpoint. After the sensor stops detecting movement and the time delay elapses, lights fade to the Low mode level. If there is no motion during the subsequent cut off time delay, the lights will turn Off. For dusk to dawn control, the integral photocell can switch the lights On and Off based on the ambient light level so that lighting remains on overnight even without motion detection.

### FEATURES —

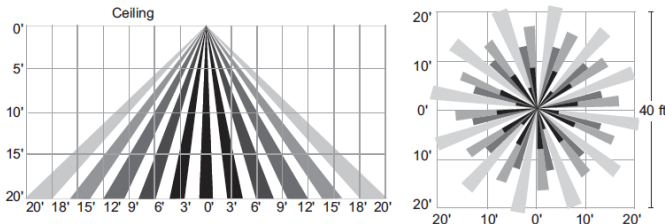
- Provides line voltage On/Off switching
- High and low modes fully adjustable from 0 to 10V
- Optional cut off delay
- Adjustable ramp up and fade down times
- Optional daylighting setpoints feature automatic calibration, or permit manual adjustment
- Polycarbonate construction; flame retardant, UV resistant, impact resistant, recyclable
- UL244A and UL508



## MOTION SENSOR LENSES FIELD OF VIEW

### TLWSFSP-L3

360° lens, maximum coverage 40' diameter from 20' height



### TLWSFSP-L7

360° lens, maximum coverage 100' diameter from 40' height

