

# DCLB SERIES

## Extruded Shoebox

### SPECIFICATIONS

#### CONSTRUCTION

The housing and door frame are constructed of extruded aluminum. The flat tempered glass lens is sealed in place and a one-piece door gasket is provided for weather tight protection. ETL listed for wet locations.

#### OPTICAL SYSTEM

Made with a state of the art high performance reflectors that use high gloss components to achieve precise photometric distributions. The fixture is a full

cut-off light fixture and is Dark-Sky Friendly in a level horizontal position only.

#### ELECTRICAL SYSTEM

Available in 1000W standard metal halide and pulse-start metal halide. Comes standard with a 4KV pulse rated mogul base socket. Each 60HZ CWA multi-tap, 480V, or 5-tap ballast is pre-wired and installed for convenience. 50HZ ballast available upon request.

#### MOUNTING

Standard mounting options include single, twin 70° and 180°, quad 70° and 90° Davit and 7° Up Tilt Straight Arms. Additional mounting options may be available for custom applications.

#### FINISH

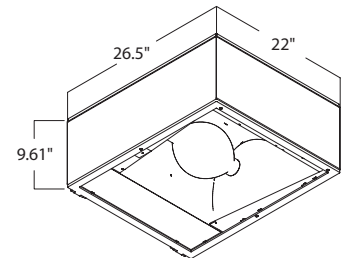
A Super Durable Polyester powder coat finish is electrostatically applied in our state of the art paint facility. Standard colors available: Black, Bronze, US Green, White. Custom colors available upon request.



CENTER COURT  
**LIGHTING**



### DIMENSIONS



Fixture EPA (ft.<sup>2</sup>) - 3.00 | Approx. Weight- 61 lbs.

### ORDERING INFORMATION

EXAMPLE: **DCLB2-G-P-1-PS-BK** (1000W Metal Halide, Multi-Tap, Pulse-Start, Black)

DCLB2	G	P	1	PS	BK
SERIES	REFLECTOR	WATTAGE	VOLTAGE	PULSE START	FINISH
	<b>G</b> Type IV Forward Throw	<b>P</b> 1000 MH	<b>1</b> Multi-Volt <sup>1,2</sup> <b>2</b> 480V <b>3</b> 5-TAP <sup>2</sup>	<b>PS</b> Pulse-Start	<b>BK</b> Black <b>BZ</b> Bronze <b>GR</b> US Green <b>WH</b> White <b>SP</b> Special

### ACCESSORIES (Order Separately)

#### DAVIT ARMS

- Single Davit Arm  
**DV190**  
EPA: 2.00
- Double Davit Arm at 180°  
**DV2180**  
EPA: 3.72
- Double Davit Arm at 70°  
**DV270**  
EPA: 3.00
- Quad Davit Arm at 70°  
**DV470**  
Quad Davit Arm at 90°  
**DV490**  
EPA: 5.20

#### CCS 7° TILT ARMS

- Single Straight Arm with 7° Up Tilt  
**CCS-190**  
EPA: 2.06
- Double Straight Arm at 70° with 7° Up Tilt  
**CCS-270**  
EPA: 3.36
- Double Straight Arm at 180° with 7° Up Tilt  
**CCS-2180**  
EPA: 3.36
- Quad Straight Arm at 70° with 7° Up Tilt  
**CCS-470**  
Quad Straight Arm at 90° with 7° Up Tilt  
**CCS-490**  
EPA: 4.66

#### SHIELDS

- Large Back Side Shield  
**S83**
- Large Vandal Shield  
**S140**

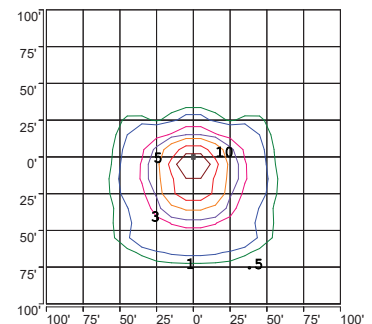
#### NOTES

- <sup>1</sup> = Multi-Tap Ballast is 120V, 208V, 240V, & 277V.
- <sup>2</sup> = Fixture is pre-wired for 240V. Alternate voltages will require field adjustment.

### EPA's (Ft.<sup>2</sup>)

Fixture Configuration	ARM MOUNT	
	Davit Arm	7° CCS Arm
1 @ 90°	5.00	5.06
2 @ 180°	9.72	9.36
2 @ 70°	8.46	8.82
4 @ 90° or 4 @ 70°	15.43	14.89

### PHOTOMETRY



ISOFOOTCANDLE PLOT:  
DCLB2GP1 1000W MH CENTER COURT SERIES  
23' AFG - 0 DEGREE TILT