

# SCIMITAR SERIES

High Lumen Output Scimitar LED Area Light

## SPECIFICATIONS

**APPLICATION** The high lumen output luminaire is designed to be a replacement for HID fixtures up to 1000W. It is optimal for tennis lighting applications where long life, low maintenance, and consistent color rendering is required. The high wattage/lumen output allows the fixture to be used for parking, restaurant, quick service, shopping centers or sports lighting applications.

**CONSTRUCTION** The heavy duty housing is constructed of cast aluminum with heat dissipating fins. The optical assemblies are sealed in place using a silicone gasket for weather tight protection. Modular LED system for ease of maintenance. ETL listed for wet locations (IP64). Additional IP66 rating available upon request. Each fixture comes standard with preps to accommodate advanced wireless control, management and reporting systems for outdoor lighting.

**FINISH** A corrosion-resistant black E-Coat layer that forms a uniform and all-encompassing protective

barrier is applied to the fixtures prior to electrostatically applying a super durable powder coat finish. Standard colors available: Black, Bronze, US Green, White. Custom colors available upon request.

**OPTICAL SYSTEM** Made with a state of the art UV stabilized acrylic high performance refractive optical assemblies that use high transmittivity materials to achieve precise photometric distributions. Although available in Type IV Tennis, optics may be ordered rotated 90 degrees for perimeter lighting or walkway applications (optics are not field rotatable). The full cutoff fixture is Star Light Friendly (meets or exceeds Dark Sky requirements) in the horizontal position.

**ELECTRICAL SYSTEM** Available in up to a 8 brick LED system in 5000K-70 CRI Cool White (+/- 500K) or 4100K-70 CRI Neutral White color temperatures propagated with CREE® XLamp XHP70 LED's. Consult factory for high CRI (90+) model availability. Available

with 100-300V 50/60 Hz Class II power supply. LED's rated for over 50,000 hours at 25°C ambient temperature. 347V~480V input option available. 0-10V dimming. Built-in surge protection up to 10 kV. Built-in Active PFC Function >95%/Full load. LEDPower Supply conforms to UL8750 standards and is IP65 rated for wet locations.

**MOUNTING** The fixture was designed to utilize an innovative die cast decorative arm that allows the fixture to easily mount to almost any existing bolt pattern or new pole. Additional mounting options include a quick mount with 8" straight arm (for use on fixtures with no more than 4 LED bricks). Additional mounting options may be available for custom applications.

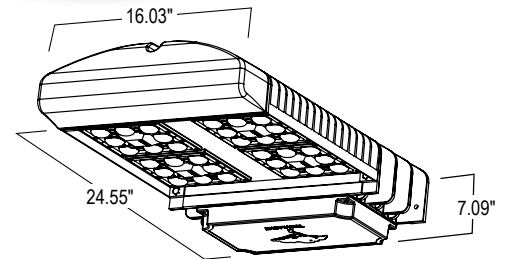
**LISTINGS** LED Power Supply listed for wet locations (IP65). LED bricks ETL listed for wet locations (IP64). Meets US and Canadian safety standards. -40°C to 50°C ambient operation. RoHS Compliant.



CENTER COURT  
LIGHTING



## DIMENSIONS



Fixture EPA (ft.<sup>2</sup>)-2.00 | Approx. Weight- 70 lbs.

## ORDERING INFORMATION

EXAMPLE: LSMT-6-C-X-T4T-F-1-BK -BTEC

LSMT	6	C	X	T4T	F	1	BK	BTEC
SERIES	# OF BRICKS	COLOR TEMP	# LEDs PER BRICKS	OPTICS	DRIVE CURRENT	VOLTAGE	FINISH	Option
	1 1 Brick	C Cool White (5000K)	X 8 XHP70 LEDs	T4T Type IV Tennis	F 1400 mA	1 Multi-Volt <sup>1</sup>	BK Black	BTEC Integrated Bluetooth
	2 2 Brick	N Neutral White (4000K)		T4 Type IV		2 347~480V	BZ Bronze	Control Module Casambi
	4 4 Brick			T5W Type VVW			GR US Green	Ready Mesh Network
	6 6 Brick						WH White	
							SP Special <sup>2</sup>	

## LUMINAIRE STATS

(Order as separate line items)

# OF LED BRICKS	COLOR TEMP	DELIVERED LUMENS			WATT-AGE	L70 @ 25°C	AMPERAGE DRAW					
		TYPE 4T	TYPE 4	TYPE 5W			120V	208V	240V	277V	347V	480V
4 BRICK	Neutral White (4000K)	62858	65483	63363	560	>50K	4.67 A	2.70 A	2.34 A	2.03 A	1.62 A	1.17 A
6 BRICK	Neutral White (4000K)	94287	98224	95044	840	>50K	7.00 A	4.04 A	3.50 A	3.04 A	2.43 A	1.75 A
4 BRICK	Cool White (5000K)	65372	68102	65897	560	>50K	4.67 A	2.70 A	2.34 A	2.03 A	1.62 A	1.17 A
6 BRICK	Cool White (5000K)	98058	102153	98846	840	>50K	7.00 A	4.04 A	3.50 A	3.04 A	2.43 A	1.75 A

## EPA's (ft.<sup>2</sup>)

Fixture Configuration	SDARM MOUNT		
	1 or 2 Brick EPA's	4 Brick EPA's	6 Brick EPA's
1 @ 90°	1.0	1.3	1.6
2 @ 180°	2.0	2.6	3.2
2 @ 90°	1.9	2.4	3.0
3 @ 90°	2.5	3.3	4.0
4 @ 90° or 4 @ 70°	3.5	4.5	5.5

EPA's shown include both the fixture and the mounting apparatus

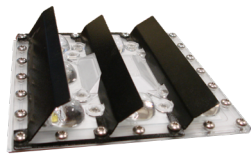
# SCIMITAR SERIES

High Lumen Output Scimitar LED Area Light

## ACCESSORIES/OPTIONS

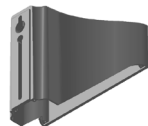
### S213

Angled Back Light Shield



### SDARM, SDARM-R

Die Cast Decorative Arm Mount



### PC2

480V Twist-Lock  
Photocell



### PC6

Multi-Tap (105-285V)  
Twist-Lock Photocell



### PCR7

7-Pin Twist-Lock Photocell Receptacle ANSI  
C136.41 and Receptacle Shorting Cap



### QMSCM

Quick Mount with 8" SSA-M  
Straight Arm (4 Brick Max)

### VBMW

Wall Mount Adaptor



### STGA7L<sup>3</sup>

Wi-Fi Ready Tablet /  
Gateway Samsung  
Tab A7 Lite

### CER150<sup>4</sup>

Wireless Repeater

### BTEC<sup>5</sup>

Integrated Bluetooth  
Control Module  
Casambi Ready Mesh  
Network

## MOUNTING ACCESSORIES

### DAVIT ARMS



Single Davit Arm  
**DV190**  
EPA: 2.00



Double Davit Arm at 180°  
**DV2180**  
EPA: 3.72



Double Davit Arm at 70°  
**DV270**  
EPA: 3.00

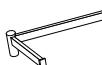


Quad Davit Arm at 70°  
**DV470**  
Quad Davit Arm at 90°  
**DV490**  
EPA: 5.20

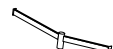
### CCS 7° TILT ARMS



Single Straight Arm with  
7° Up Tilt  
**CCSVSA7-190**  
EPA: 2.06



Double Straight Arm at 70°  
with 7° Up Tilt  
**CCSVSA7-270**  
EPA: 3.36



Double Straight Arm at  
180° with 7° Up Tilt  
**CCSVSA7-2180**  
EPA: 3.36



Quad Straight Arm at 70°  
with 7° Up Tilt  
**CCSVSA7-470**  
Quad Straight Arm at 90°  
with 7° Up Tilt  
**CCSVSA7-490**  
EPA: 4.66

## NOTES

**1** = Multi-Volt is an auto ranging power supply from 100V to 300V input.

**2** = Custom RAL color matching is available. Contact your sales representative for additional info.

**3** = Enables remote access using the Gateway and Sites functionality in the Casambi App. Automatically restores network control settings and provides automatic time back up for the mesh network.

**4** = For extended range greater than 150ft between BT Mesh Network connections.

**5** = Control Modules are installed and luminaires are commissioned at the factory. Lighting control system via the Casambi app for Apple iOS and Android devices provides diverse functionality for a control hierarchy capable of managing multiple schedules and scenes and incorporating a variety of energy saving accessories.