

# AURORA SERIES

## Designer Shoebox

### SPECIFICATIONS

#### CONSTRUCTION

The architecturally shaped housing and door frame are constructed of die cast aluminum. The door frame features a tool-less latch with stainless steel hardware. The flat tempered glass lens is sealed in place and a one-piece door gasket is provided for weather tight protection. ETL listed for wet locations.

#### OPTICAL SYSTEM

Made with a state of the art high performance reflectors that use

high gloss components to achieve precise photometric distributions.

#### ELECTRICAL SYSTEM

Available 1000W standard metal halide and pulse-start metal halide. Comes standard with a 4KV pulse rated mogul base socket. Each 60HZ CWA multi-tap or 480V ballast is pre-wired and installed for convenience. 50HZ ballast available upon request.

#### MOUNTING

Standard mounting options include

single, twin 70° and 180°, quad 70° and 90° Davit and 7° Up Tilt Straight Arms. Additional mounting options may be available for custom applications.

#### FINISH

A Super Durable Polyester powder coat finish is electrostatically applied in our state of the art paint facility. Standard colors available: Black, Bronze, US Green, White. Custom colors available upon request.



CENTER COURT  
LIGHTING

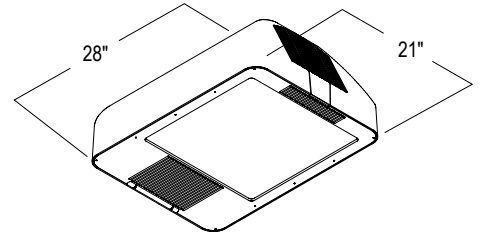


### ORDERING INFORMATION

EXAMPLE: **AURORA1-B-P-1-PS-BK** (1000W Metal Halide, Multi-Tap, Pulse-Start, Black)

AURORA1	B	P	1	PS	BK
SERIES	REFLECTOR	WATTAGE	VOLTAGE	PULSE-START	FINISH
	B Type IV Forward Throw	P 1000 MH	1 Multi-Tap <sup>1,2</sup> 2 480V	PS Pulse-Start	BK Black BZ Bronze GR US Green WH White SP Special

### DIMENSIONS



Fixture EPA (ft.<sup>2</sup>)-2.00 | Approx. Weight- 70 lbs.

### EPA'S (Ft.<sup>2</sup>)

Fixture Configuration	EPA's 7° CCS Arm
1 @ 90°	4.06
2 @ 180°	7.36
2 @ 90° or 2 @ 70°	7.00
4 @ 90° or 4 @ 70°	11.48

### ACCESSORIES (Order Separately)

#### CCS 7° TILT ARMS

Single Straight Arm with 7° Up Tilt  
**CCSVSA7-190**  
EPA: 2.06

Double Straight Arm at 70° with 7° Up Tilt  
**CCSVSA7-270**  
EPA: 3.36

Double Straight Arm at 180° with 7° Up Tilt  
**CCSVSA7-2180**  
EPA: 3.36

Quad Straight Arm at 70° with 7° Up Tilt  
**CCSVSA7-470**  
Quad Straight Arm at 90° with 7° Up Tilt  
**CCSVSA7-490**  
EPA: 4.66

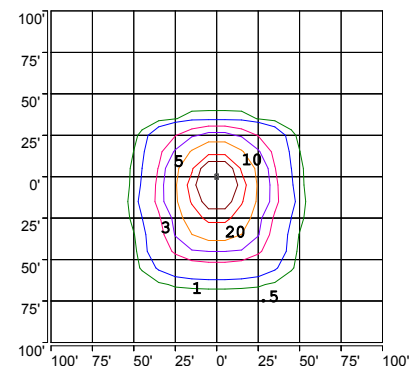
#### SHIELDS

Back Side Shield  
**S143**

### NOTES

- 1 = Multi-Tap Ballast is 120V, 208V, 240V, & 277V.
- 2 = Fixture is pre-wired for 240V. Alternate voltages will require field adjustment.

### PHOTOMETRY



ISOFOOTCANDLE PLOT:  
AURORA 1000W MH CENTER  
COURT SERIES  
23' AFG - 0 DEGREE TILT