

MAY 2020

EEAA News

The latest news, events and announcements from the
Environmental Education Association of Alabama

IN THIS ISSUE

**Online Resources from
partners across Alabama**

**Southeast and NAAEE
Conference updates**

**Meet the new EEAA
Board Members**

**EEAA Conference
Highlights 2020**

Environmental Education Association
of Alabama

CONTACT@EEAA.US

EEAA.US

FACEBOOK: ENVIRONMENTAL
EDUCATION ASSOCIATION OF
ALABAMA

EEAA President: Allie Sorlie



Hello EEAA membership! My name is Allie Sorlie and I am honored to be the recently elected President of this incredible organization. By day, I am the Education Outreach Coordinator at the Alabama Museum of Natural History at the University of Alabama in Tuscaloosa (a mouthful, I know), but I have also been a member of EEAA since 2013 when I was first introduced to the group by a colleague. I walked away from my first conference feeling like I was home and that I had found my people. I have felt the same way ever since. I believe strongly in the work and mission of this organization and look forward to our continued growth as a group. I hope that being a part of EEAA brings the same feeling of community to you and allows you to connect to people who share the same passion for environmental education that you have.

EEAA draws its strength from its membership. We are a group of non-profit organizations, formal and informal educators, museums, educational centers, classrooms, artists, state parks, businesses, advocates, students, and individuals all wanting to share their love for the environment with others. There is no better place to see the breadth of our membership than at our annual conference which was held this past February at Joe Wheeler State Park. This year's conference was the largest attended EEAA's history and included creative and informative workshops, an engaging keynote speaker, exciting field trips, and unlimited networking opportunities. It was a time to catch up with old friends, make new acquaintances, and discover just how much environmental education work is being done in Alabama. These conferences could not happen without the hard work, dedication, and passion of the EEAA Board. I want to thank the Board for all the time and the energy you spent organizing such a memorable and engaging experience. And I want to thank you, the members, who attend each year. We would not be able to bring together all the resources and creativity that comes with each conference without your attendance and support.

So, what is next? The EEAA Board is hard at work implementing the five-year strategic plan put in place last year. With a starting focus on communication and growing the membership, we are working our way to a stronger organization. We look forward to continuing to get to know you and meeting new groups and individuals working toward the same goals, spreading environmental education to all corners of Alabama. Keep an eye out for announcements about our upcoming conference and updates on work being done throughout the state. If you haven't already, please follow us on social media where you will see pictures and stories about EEAA and its members.

I look forward to working with the EEAA Board and you, the membership, as we make like a plant and grow!

Sincerely,
Allie Sorlie

Welcome New EEAA Board Members

Tina Miller-Way, PhD

Chair, Discovery Hall Programs for Education & Outreach Dauphin Island Sea Lab

Tina is the current Chair of Discovery Hall Programs for Education and Outreach at the Dauphin Island Sea Lab. Tina took her 1st science field trip to the shores of Lake Michigan through a Shedd Aquarium program and has been fascinated with water – fresh or salty, ever since. Tina received a MS in Oceanography from Oregon State University and a PhD in Oceanography & Coastal Studies from LSU. She has enjoyed field work in many watery areas including Belize, Puerto Rico, Louisiana bayous, the Gulf's continental shelf and of course, Alabama. Tina taught at the university level for 10 years and in the Sea Lab summer university program, sharing her enthusiasm for freshwater and marine aquatic life with science majors as well as education students. Tina has lived on all 4 coasts, is a decent but not expert birder, and loves to travel. Her children have seen many coasts, but fewer mountains.



Mike Ezell

Mike Ezell resides in Rogersville, AL and is a recently retired Naturalist with the Alabama State Parks. His education includes a BS degree in Chemistry/Mathematics from The University of North Alabama and a BSEd in Science Education from Athens State University. Over his working career, he spent 13 years with the Goodyear Tire and Rubber Company, 10 years teaching Secondary level Sciences, 1 year with ADEM, and 2.5 years as the Park Naturalist at Lake Guntersville State Park. Mike is married with 3 children and 4 grandchildren. His hobbies include fishing, gardening and hiking. Mike plans to continue his Environmental Education work with the State Parks and others on a volunteer basis.



Beth Dille

**McDowell Environmental Center
Director**



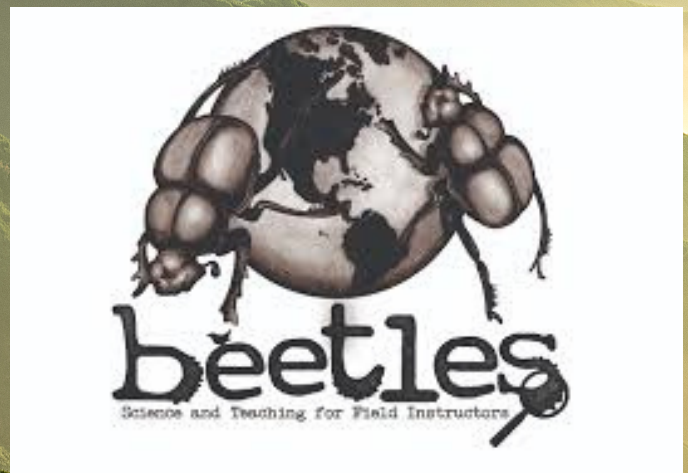
Beth is originally from the Twin Cities, Minnesota. She earned her undergrad in History and Education from the University of Wisconsin, Eau Claire and also has a Masters of Religious Education from Liberty University. She has lived . . . everywhere; from New Jersey to Texas, Australia to Florida. She worked in environmental education in Texas and is very excited to be back in this career. Between that position and Camp McDowell she has been a social studies teacher and a Children and Youth Director. One of her favorite jobs is being a team building/leadership facilitator and trainer, which includes working with high and low rope courses. Beth adores her six year old son, Lucas, and spends most of her free time with him. She also loves spending time with friends, traveling, cooking, running, reading and listening to a ridiculous amounts of podcasts. One of her greatest passions is working with people in Thailand with an organization called "Mission Pattaya."

BEETLES 2020 Region-Building Grant Awardees

Congratulations to Alabama's proposal for making it to the final six for BEETLES funding!! EEAA is excited to be a part of the collaborative effort that will use project funding to strengthen collaboration between EE providers statewide, establish Alabama norms for high quality EE that is inquiry-based, culturally relevant, equitable and inclusive.

Here is a link to the BEETLES newsletter announcing the winners.

http://beetlesproject.org/beetles-region-building-grant-awardees/?fbclid=IwAR1OQKrWMN0eVbs28lhPP_E8DErtFLjtFe3kvPnbWYNJel9KkniYZN0PgKE



Learn, Grow, Eat & Go!

Based on new research of kids in school, the LGEG program combines the garden, nutrition, and physical activity into a unique package for learning more about healthy habits. Created by teachers, this multifaceted garden, nutrition, and physical activities curriculum is evidence-based and academically rich. Through a linear set of hands-on, proven lessons, your students will better understand plants and how plants provide for people.

<http://jmgkids.us/lgeg/>

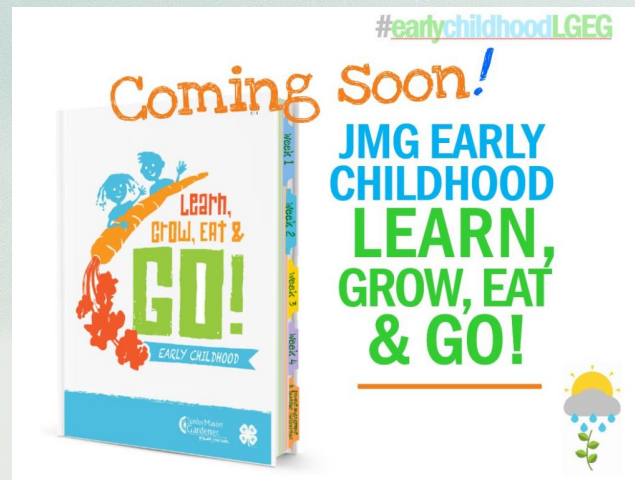
Camp McDowell

Camp McDowell has daily videos going up on FB and YouTube! Go to the Camp McDowell Facebook page at 10 am daily! Also the Camp McDowell YouTube Channel:

<https://www.youtube.com/channel/UC9wpCYkP9lmJfHoYTF5>

ZGRA

<https://www.facebook.com/CampMcDowell>



Friends of the Birmingham Botanical Gardens

In support of Alabama Gov. Kay Ivey's new statewide Safer at Home order, Birmingham Botanical Gardens remains closed. The City of Birmingham Park and Recreation Board, which has jurisdiction over the Gardens, will meet in the coming weeks to assess the status of its facilities moving forward. We continue to wish you and your family good health and look forward to welcoming you back to the Gardens as soon as City and State directives permit. In the meantime, the Friends of Birmingham Botanical Gardens will continue bringing the Gardens to you through new digital content. Be sure to follow the Gardens on social media, check out our [Around the Gardens blog](#), and visit our [website](#) to sign up to receive our e-news. Thank you for your understanding and support.—Friends of Birmingham Botanical Garden

s

<https://www.facebook.com/BirminghamBotanicalGardens>

Dauphin Island Sea Lab

The Sea Lab has been doing a fair amount of virtual education.

These efforts can be found

at <https://www.disl.org/about/digital-learning-with-disl> which includes all of the archived materials and sessions. We have also been doing a lot of short videos on our facebook page <https://www.facebook.com/discoveryhallprograms>.

UPCOMING EVENTS

May 19 NAAEE Webinar:

Nature as Inspiration and Transformation: An Intro to Nature Poetry

Sept 24-27 SEEA Conference

Columbia, SC

Oct. 14-17 NAAEE Conference

Tucson, AZ

EEAA Conference 2021 Details Coming Soon!

Ruffner Mountain - The Mountain is calling!

What a gorgeous Spring we are having in Birmingham!
Our friends at Freshwater Land Trust have put together a list of "trails less traveled" to help you find new trails to safely explore in Jefferson County.

PLEASE: Always maintain a MINIMUM of 6 feet between you and other people, even if that means stopping and walking off the trail. If a parking lot or trail looks busy, come back another time or visit another trail on the list!

Ruffner Mountain has some "at-home" environmental education resources including: lesson plans, activities, coloring sheets, and videos on our website:

<https://ruffnermountain.org/at-home>

<https://www.facebook.com/ruffnermountain/>



Alabama Museum of Natural History

The UA Museums is hosting a range of livestream and other digital content right now. You can find the schedule of programs at

www.museums.ua.edu/museumsfromyourhome

[https://www.facebook.com/ALMNH/?tn=%2Cd%2CP-R&eid=ARAbNeOG-](https://www.facebook.com/ALMNH/?tn=%2Cd%2CP-R&eid=ARAbNeOG-0vJ6EqjRR89_o2P83432FxW1niBpWguFcEhssjyG0grlLGz5KnNblW30mcMzja_T-gBy8ax)

[0vJ6EqjRR89_o2P83432FxW1niBpWguFcEhssjyG0grlLGz5KnNblW30mcMzja_T-gBy8ax](https://www.facebook.com/ALMNH/?tn=%2Cd%2CP-R&eid=ARAbNeOG-0vJ6EqjRR89_o2P83432FxW1niBpWguFcEhssjyG0grlLGz5KnNblW30mcMzja_T-gBy8ax)



Here is the link to our Museum programs on YouTube:

<https://www.youtube.com/UAMuseums>

Weeks Bay National Estuarian Research Preserve

Since students are no longer able to come to the Reserve for field trips the remainder of the semester, our Education Team has worked to bring the field trips to you! Follow the link below to go seining in the bay and learn about some of the aquatic critters that call Weeks Bay home. If you are interested in supplemental worksheets and programs to accompany the video, e-mail

us at: weeksbayreserve@gmail.com

Just tell us what grade levels and the number of students and we will send you some worksheets and other environmental education resources.

<https://www.youtube.com/watch?v=NUtvV92Khjg&t=1s&fbclid=IwAR3o-B8BH3TLbag51jpteT5shzZGbjGnrLjSH-l69ku-GVTh8GUFE5M4bNw>



COVID-19

Natural Start COVID-19 Forums

Thank you to the hundreds of professionals who have participated in forums held throughout April to connect and inform the nature-based early education community. A report on the outcomes of the first two forums is available here.

More focused discussions on distance learning, financial planning, and summer programming followed the first forums, and more are being planned. Dates will be shared soon.

[https://naturalstart.org/sites/default/files/staff/covid-19 forums summary final.pdf](https://naturalstart.org/sites/default/files/staff/covid-19%20forums%20summary%20final.pdf)



**EARTH
SCHOOL**
For Nature

Check out this exciting new Earth School, which is a collaboration between UNEP, National Geographic, WWF, and many other NAAEE partners. During this moment of schooling at home, many teachers and parents are looking for top-quality educational resources to help their kids learn about solutions to our most pressing challenges. To meet this demand, UNEP, TED-Ed, and partners have joined forces to offer #EarthSchool - a new platform offering the best online environmental education material out there. Dive in and share: <https://ed.ted.com/earth-school>



Affiliate Network Resources

Is your Affiliate continuing to look for ways to support your network during COVID-19? Check out this incredible resource guide crowdsourced by the Colorado Association for Environmental Education for some ideas and resources for supporting environmental education and continuing the vitally important work we all do during this crisis.

https://docs.google.com/document/d/1Y4BCnhz_Czv1hTC48JEQ9-3NV5DpnB8LpJdsRAspXfY/edit#heading=h.bwqa2gr0sekq

Upcoming NAAEE Webinars

Nature as Inspiration and Transformation: An Intro to Nature Poetry
May 19, 3:00-4:00 PM ET - Join award-winning poet and nature writer, Aimee Nezhukumatathil for a webinar focused on using the inspiration of nature to inspire and transform your writing.

<https://naaee.org/eeopro/learning/webinars/webinar-nature-inspiration-and>

EAAA Conference

Feb 27-29, 2020

Joe Wheeler State Park



B.E.E.P. (Best Environmental Education Program) Awards Congratulations to our 2020 BEEP AWARD Winners!!

Diana Marchant

Best Environmental Educator of the Year

Ardmore High School 4-H
Naturalist Studies Program

Best Environmental Education Course or
Curriculum

