



Task Force Meeting #1

Date: Tuesday, January 26, 2021

Time: 9:00 AM – 11:00 AM

Location: Virtual via GoToMeeting

- Georganna Gillette (Space Coast Transportation Planning Organization (SCTPO))
- Sarah Kraum (SCTPO)
- Laura Carter (SCTPO)
- Chelsea Forgenie (SCTPO)
- Abby Hemenway (SCTPO)
- Travis Hills (Kittelsohn & Associates, Inc. (KAI))
- Mary Raulerson (KAI)
- Sigal Carmenate (KAI)
- Task Force invitees and attendees list attached

Introduction:

The purpose of this meeting was to introduce the Task Force to the Transportation Resiliency Master Plan (RMP) and their role in the project. The meeting agenda included introductions, discussions about the project scope and schedule, relevant best practices and programs, data collection efforts, key Stakeholders and Underserved Communities, and next steps.

Meeting Notes:

The meeting discussion was guided by a PowerPoint presentation, and feedback was collected using Mentimeter interactive polling and open discussion throughout the meeting. Highlights from the meeting are listed below.

- Some Task Force members are working on other relevant plans and/or programs in their organization/municipality, such as the following:
 - Municipal sustainability action plans;
 - Municipal resiliency plans;

- Brevard Local Mitigation Strategy;
 - Audubon Florida and East Central Florida Regional Resiliency Collaborative (R2C) Climate Cohort Program;
 - United States Army Corps of Engineers (USACE) Southeast Study; and
 - Stormwater master plans.
- Organizations/municipalities are at various stages of resiliency planning.
 - A Mentimeter poll of 27 respondents showed that most organizations/municipalities are in the early stages of planning for and implementing resiliency projects and programs, with plans to begin work in the next year or two.
- Some Task Force members provided additional information about relevant case studies and datasets, including the following:
 - East Central Florida Regional Planning Council sea-level rise and surge data;
 - East Central Florida Road Condition Assessments; and
 - Brevard County Emergency Management Local Mitigation Strategies Hazard Summaries.
- The following potential Task Force members were identified:
 - Lori Cox from East Central Florida Regional Planning Council; and
 - Ashleigh Fountain and Kipp Weber from the USACE.
- The following potential Stakeholders were identified:
 - The Marine Resources Council;
 - The Indian River Lagoon Council;
 - The Indian River Lagoon National Estuary Program;
 - Airport Authorities;
 - National Weather Service Melbourne Office; and
 - Florida Power & Light Company (FPL).
- KAI and the SCTPO will brainstorm how to effectively engage Underserved Communities while respecting social distancing practices and guidelines.
- The following contacts were discussed to help identify and engage Underserved Communities:
 - Brevard Housing Authority;
 - National Association for the Advancement of Colored People (NAACP); and
 - Aging Matters Brevard.
- The SCTPO will be launching a resiliency education campaign aimed to educate elected officials and the general public.
- One suggestion offered for the next Task Force Meeting was to have follow-up questions to the Mentimeter polls.
- The second Task Force Meeting will be held in Spring 2021.

The agenda, presentation, Mentimeter poll responses, and the invitees/attendees lists are attached.



Task Force Meeting #1 Agenda

Transportation Resiliency Master Plan

January 26, 2021

Virtual via GoToMeeting

9:00 AM – 11:00 AM

1. Introductions
2. Project Scope, Schedule, and Overall Approach
 - a. Defining Transportation Resiliency
 - b. Roles and expectations of Task Force members
3. Relevant Best Practices and Programs
4. Input from Task Force on Data Collection
5. Key Stakeholders & Underserved Communities to Engage
6. Next Steps
 - a. Task 3 – Data Collection and Analysis Activities
 - b. Stakeholder and Underserved Communities meetings
 - c. Next Task Force Meeting in May 2021 –
 - i. Review Draft Influence Areas and Current Conditions
 - ii. Vulnerable Communities Identification
 - iii. Determine Shortlist of Shocks/Stressors



RIDE_{the} WAVE
TO RESILIENCY

TRANSPORTATION RESILIENCY MASTER PLAN

TASK FORCE MEETING #1

JANUARY 26, 2021

VIRTUAL VIA GOTOMEETING

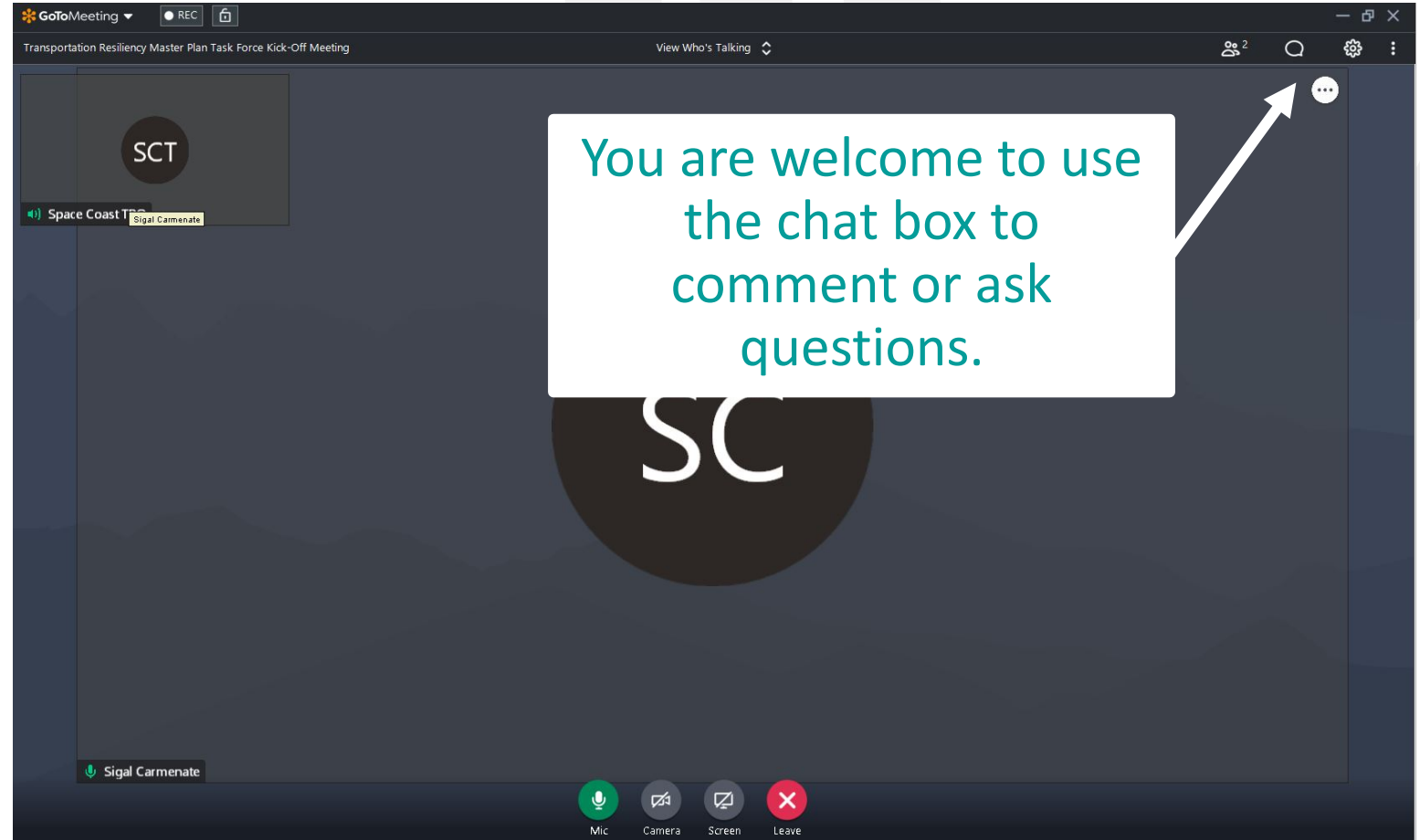
9:00 AM – 11:00 AM

GOTOMEETING LOGISTICS



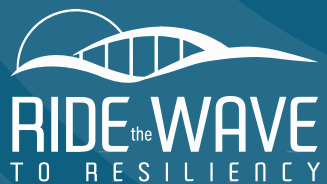
Today's meeting is being recorded.

Presentation and recording will be posted to the website.



In order to reduce background noises, please keep yourself muted unless you are speaking.

INTRODUCTIONS



TELL US ABOUT YOURSELF IN THE CHAT

- Full name
- Agency/Organization
- Length of occupation



MENTIMETER QUESTIONS

Mentimeter will be utilized as a component of audience participation.

Go to Menti.com using a computer, tablet, or cellular device and enter code:

11 62 11 4

AGENDA

- Introductions
- Project Scope, Schedule, and Overall Approach
- Relevant Best Practices and Programs
- Input on Data Collection
- Key Stakeholders and Underserved Communities to Engage
- Next Steps

What is your favorite place in Brevard? (Park, city, restaurant, etc)

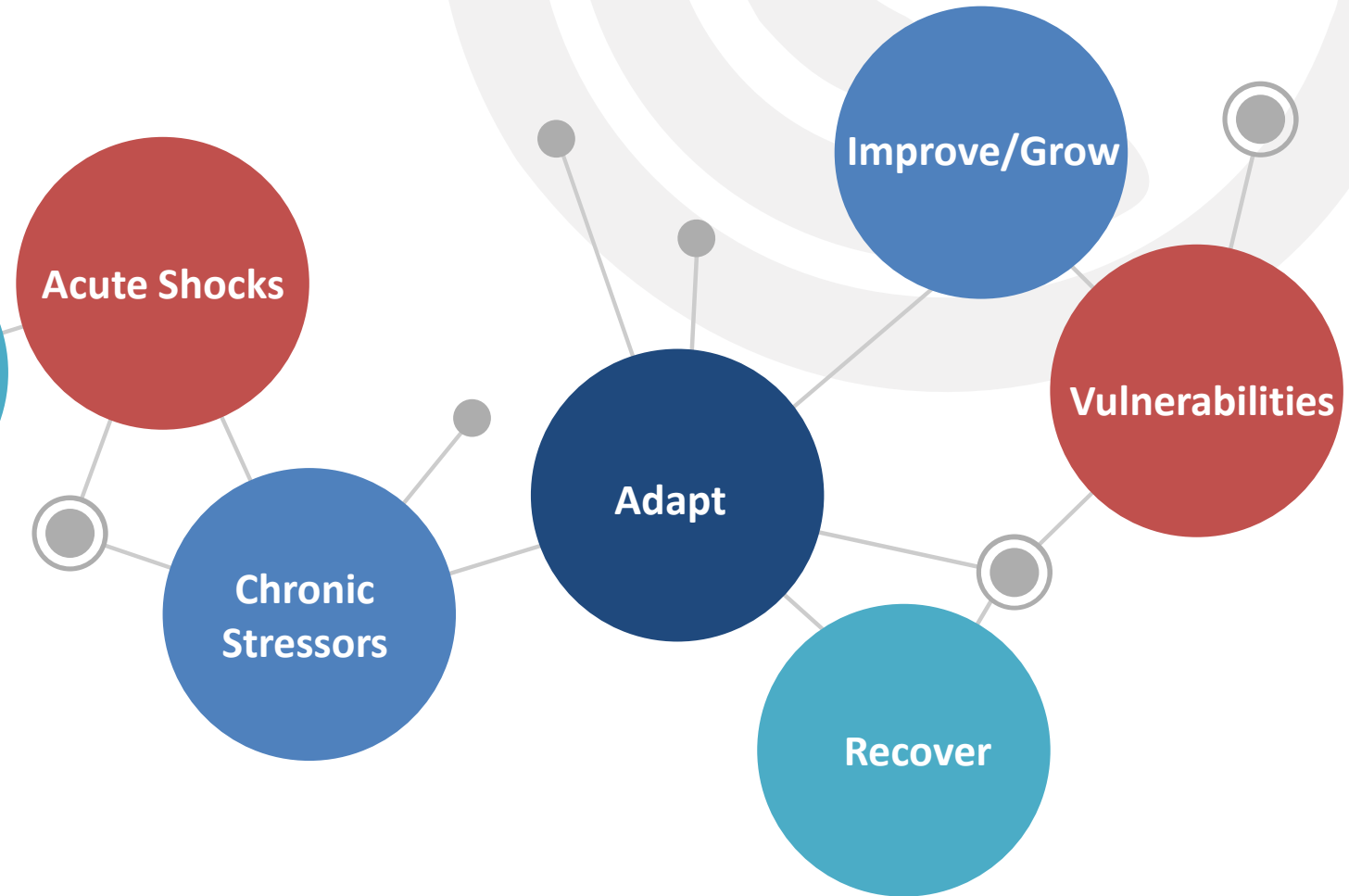
brevard zoo
cocoa village
beach

PROJECT SCOPE, SCHEDULE, AND OVERALL APPROACH

SUSTAINABILITY



RESILIENCY



WHAT IS RESILIENCE?

East Central Florida Regional Resiliency
Action Plan (ECFRRAP) Definition:

The capacity of individuals, communities, institutions, businesses and systems within a region to plan, sustain, adapt, recover, improve and grow collaboratively – regardless what kind of chronic stresses and acute shocks they experience



BUILDING ON PREVIOUS WORK – STATEWIDE EFFORTS

FDEP Basin Management Action Plans (BMAP) – statewide watershed management

- North IRL (January 2013) – reductions needed in subbasins (Turnbull Creek to NASA Causeway and NASA Causeway to Melbourne Causeway (U.S. Highway 192)
- Central IRL (January 2013) – no additional reductions needed
- Banana River Lagoon (January 2013) – reduction needed in area south of the SR 528 Causeway

IRLNEP Comprehensive Conservation and Management Plans (CCMPs)

SJWMD Surface Water Improvement and Management (SWIM) Plans

FDOT Florida Transportation Plan (FTP) Resiliency Subcommittee



BUILDING ON PREVIOUS WORK – REGIONAL EFFORTS

ECF Regional Resilience Collaborative

- ECFRPC resolution recommitting to regionalism to support:
 - ☐ Health (people) + Equity
 - ☐ Build Infrastructure + Natural Environment (places)
 - ☐ Economic Resilience (prosperity)
- Stakeholders across the region to develop a structure and framework for a regional resilience
 - ☐ Steering Committee/Council Sub-Committee
 - ☐ Technical Advisory Committee



BUILDING ON PREVIOUS WORK – REGIONAL EFFORTS

ECFRPC Regional Resiliency Action Plan

- Focused on Sea Level Rise and Climate Adaptation
- Broad Perspective with Focus Areas:
 - ☐ Leadership and Strategy
 - ☐ Economic and Society
 - ☐ Infrastructure and Environment
 - ☐ Health and Wellbeing
 - ☐ Developed Goals, Objectives and Actions to be taken by different agencies over 5-year period

Resilient Brevard – Brevard County and ECFRPC

- Take a short survey by 1/27:
www.perilofflood.net/resilient-brevard



BUILDING ON PREVIOUS WORK – REGIONAL EFFORTS

SCTPO Sea Level Rise Vulnerability Assessment

- Sea Level Scenario Sketch Planning Tool
- Documents inundation risks to transportation assets

2019-22 SCTPO Governing Board Strategic Plan

- Sustainability & Resiliency Emphasis Area

SCTPO Project Prioritization Methodology

- Sustainability & Resiliency Pre-Screening Criteria

SCTPO 2045 LRTP

- A primary goal is to provide a resilient transportation system



BUILDING ON PREVIOUS WORK – LOCAL EFFORTS

- Vulnerability Assessments
- Resiliency Recommendations and Adaptation Action Area Recommendations
 - ☐ Community Resiliency Plans after ECFRPC RAP
- Projects and actions to achieve pollutant reductions as part of BMAPs
- Sustainability/Resiliency Elements in Comprehensive Plans (12/17 municipalities)
 - ☐ Cape Canaveral
 - ☐ Cocoa
 - ☐ Cocoa Beach
 - ☐ Grant Valkaria
 - ☐ Indialantic
 - ☐ Indian Harbour Beach
 - ☐ Melbourne
 - ☐ Melbourne Beach
 - ☐ Palm Shores
 - ☐ Rockledge
 - ☐ Satellite Beach
 - ☐ Titusville



MENTIMETER QUESTIONS

What other relevant plans/programs does your organization/municipality have or are working on?



WHAT IS TRANSPORTATION RESILIENCY?

.....the ability of the transportation system to recover and regain functionality after a major disruption or disaster.

Source: visitspacecoast.com/



WHAT ARE SHOCKS AND STRESSORS?

- **Acute Shocks** = Single, sharp events that threaten a community
- **Chronic Stressors** = Continuous or re-occurring issues or events that impact or weaken the fabric of a community on a day to day or cyclical basis



Source: Bill Klein

MENTIMETER QUESTIONS

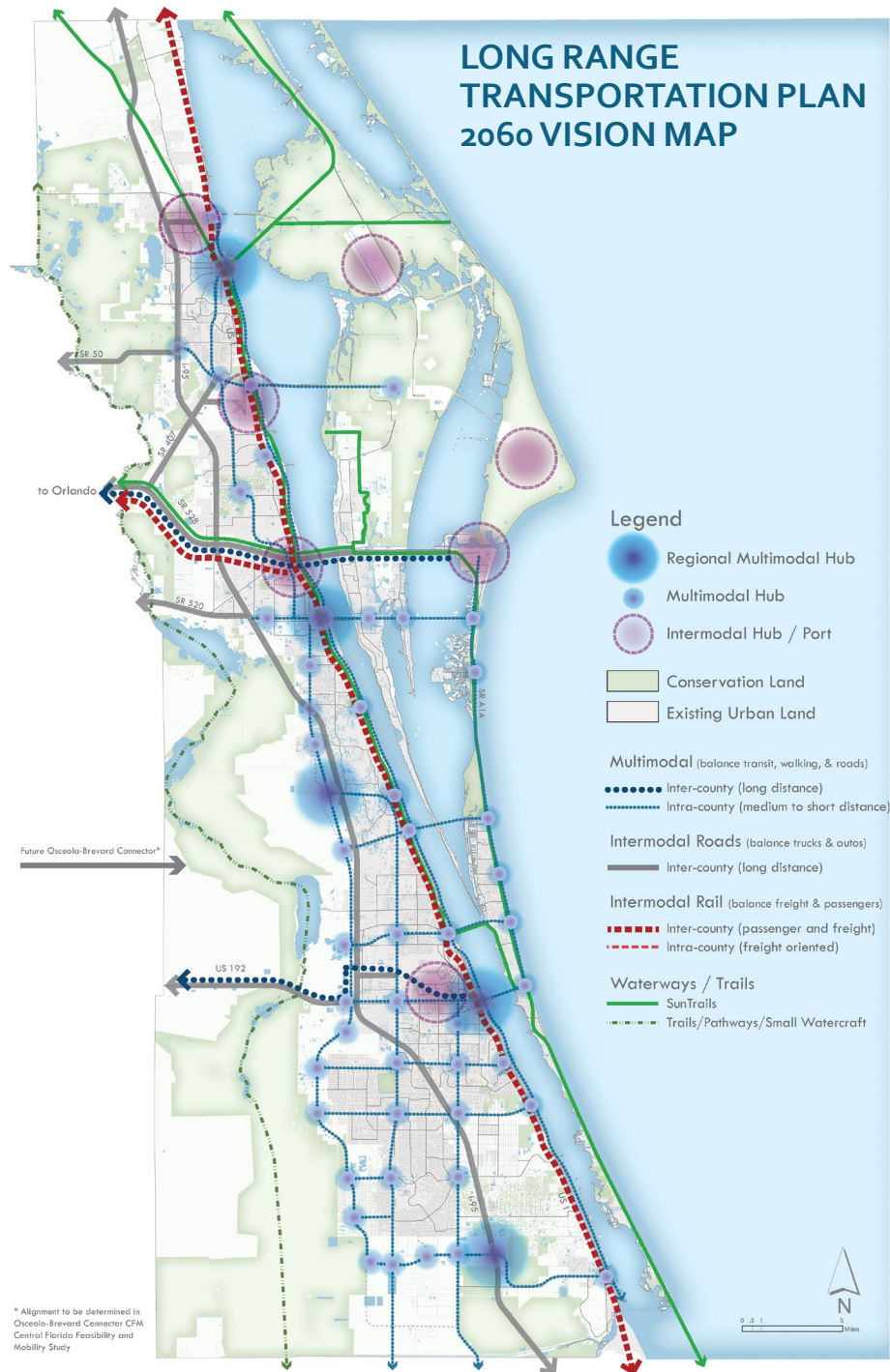
Where is your organization/municipality at regarding Transportation resiliency?



change process access multimodal
Coastal areas sea level rise
fires culture cyber attacks
emergency management flooding economic impact
shoreline metrics policy and planning
alternate routes equity collaborations low impact design
land use seawalls erosion funding infrastructure
hurricane evacuation storm surge



Transportation Resiliency



TRANSPORTATION FOCUS

- Must answer:
 - What puts people and infrastructure at risk?
 - Which infrastructure are most important to protect?
- Key areas in Brevard County identified through *Influence Areas*
 - Buffer areas around natural systems and where they potentially influence/interact with transportation infrastructure and the built environment

What are our current conditions?

What future events potentially put our people/infrastructure at risk?

Which infrastructure are most important to protect?

What actions should we take to protect our high priority infrastructure?

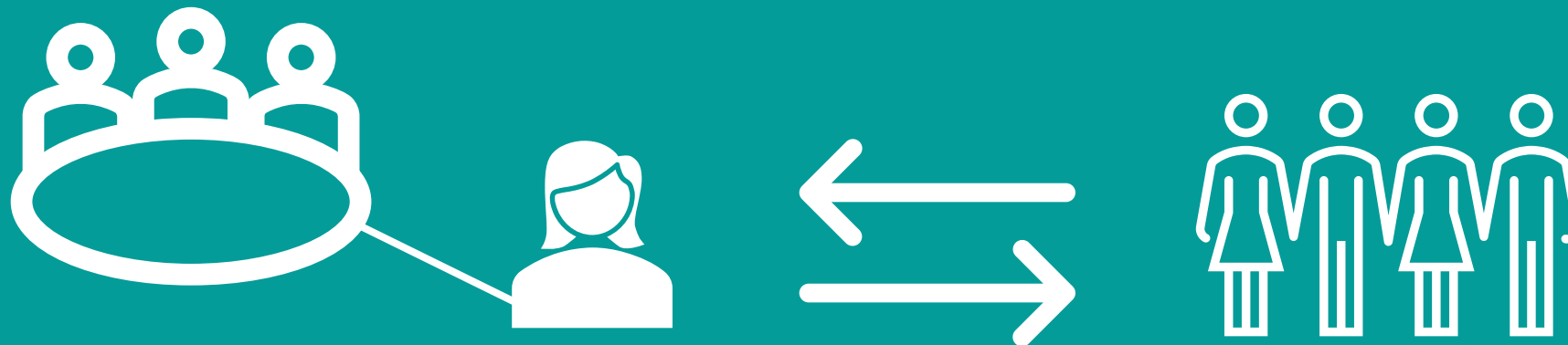
2020

2021

2022

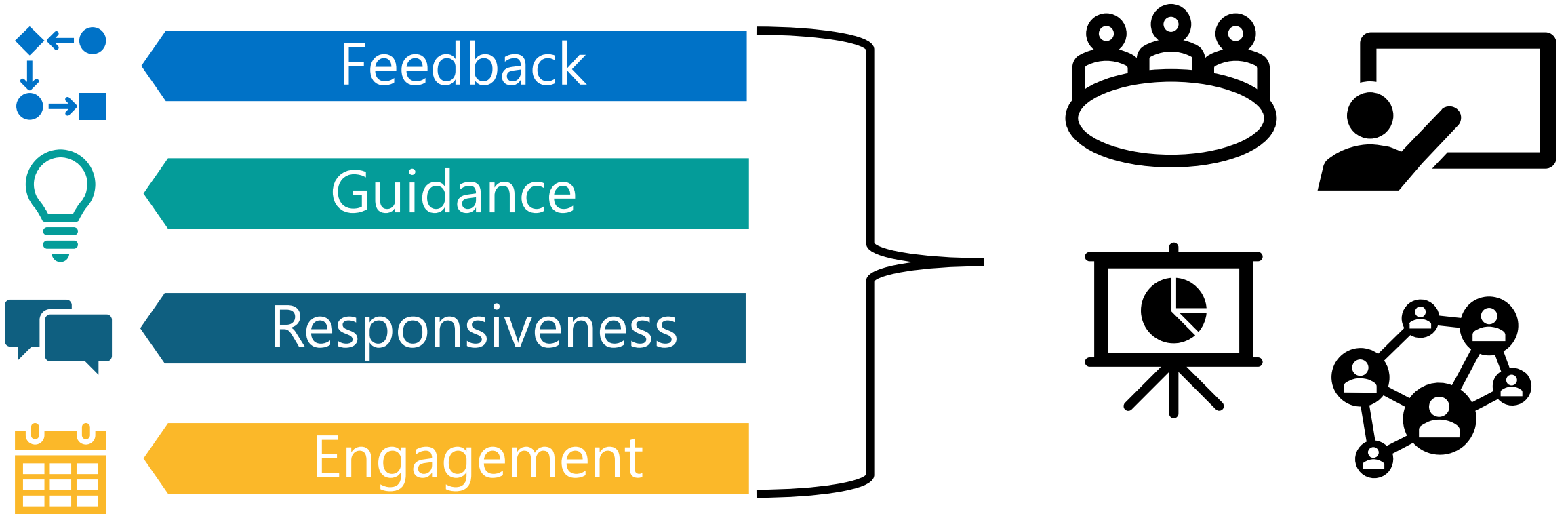
		2020			2021												2022									
MAJOR TASK		Oct	Nov	Dec	Jan	Feb	Mar	Apr	May	June	July	Aug	Sept	Oct	Nov	Dec	Jan	Feb	Mar	Apr	May	June	July	Aug	Sept	Oct
Task 1: Develop an Education and Engagement Strategy																										
Task 2: Outreach and Education	Board/TAC/CAC Presentations																									
	Task Force Meetings				★																					
	Focus Group Discussions																									
	Stakeholder Work Sessions																									
	Underserved Community Meetings																									
	Community Outreach																									
Task 3: Data Collection and Analysis																										
Task 4: Define Shocks and Stressors																										
Task 5: Transportation Resiliency Master Plan Development																										

★ We Are Here



**WE NEED YOU TO SHARE INFORMATION WITH LOCALS
&
TO SHARE LOCAL INFORMATION WITH US**

ROLES AND EXPECTATIONS OF THE TASK FORCE



Task 3: Data Collection and Analysis

What are our current conditions?

- Feedback on engagement strategy/help engage others
- Information/data on current conditions
- Continuity from best existing programs/work
- Information/data on future conditions
- Input on definitions of shocks/stressors



Task 4: Define Shocks and Stressors

What future events potentially put our people/infrastructure at risk?

What infrastructure are more important to protect?

- Define goals/objectives to address shocks/stressors
- Feedback on scenarios/projections runs and critical areas/corridors/infrastructure
- Feedback/buy-in on vulnerable corridors
- Advise on identifying the top six shocks/stressors



Task 5: Transportation Resiliency Master Plan Development

What actions should we take to protect our high-priority infrastructure?

- Implementing strategies
- Identify barriers to implementation

TASK FORCE MEMBERS INVITED

Agency/Organization	Name
Brevard County - Emergency Management	John Scott
Brevard County - Natural Resources	Darcie Mcgee
Brevard County - Planning	Jane Hart
Brevard County - Planning	Jeffery Ball
Brevard County - Public Works	Corrina Gumm
Brevard County - Utilities	Edward Fontanin
Cape Canaveral	Brenda Suprenant
Cape Canaveral	Zac Eichholz
Cocoa - Planning	Alix Bernard
Cocoa - Public Works	Bryant Smith
Cocoa Beach	Jared Francis
ECFRPC	Tara McCue
EPA	Roshanna White
FDOT	Casey Lyon
FDOT	Steve Shams
Florida DEP	Leo Angelero
Florida Sea Grant/UF/IFAS Extension	Holly Abeels

Agency/Organization	Name
Grant-Valkaria	Jason Mahaney
Indialantic	Michael Casey
Indian Harbour Beach	Mark Ryan
Indian River Lagoon Council	Duane De Freese
Malabar	Lisa Morrell
Melbourne	David Wilkison
Melbourne	Todd Corwin
Melbourne Beach	Elizabeth Mascaro
Melbourne Tillman WCD	Mike McCabe
Palm Bay	Suzanne Sherman
Port Canaveral	Bob Musser
Rockledge	John Cooper
Satellite Beach	Courtney Barker
Satellite Beach	Alexis Miller
SJRWMD	Abby Johnson
SJRWMD	Tom Frick
Titusville	Eddy Galindo
West Melbourne	Daniel Martoma

RELEVANT BEST PRACTICES AND PROGRAMS

RELEVANT PLANS REVIEWED TO-DATE

- Florida

- ☐ Southeast Florida Regional Climate Compact
Regional Climate Action Plan (RCAP)
- ☐ Through the Lens of Resilience
- ☐ ***Resilient 305***

- National

- ☐ Brookline Urban Forest Climate Resiliency Master Plan
- ☐ Mariposa County Recreation and Resiliency Master Plan
- ☐ Metro Climate Action and Adaptation Plan
- ☐ New Hampshire Ten Year Plan
- ☐ Oregon Resilience Plan
- ☐ Plan Bay Area 2050
- ☐ ***Texas Coastal Resiliency Master Plan***
- ☐ Urban Transportation System Flood Vulnerability Assessment with Special Reference to Low Income and Minority Neighborhoods
- ☐ Vulnerability and Resiliency Framework for the Atlanta Region



Source: brevardcountyrealty.com/

RESILIENT 305 – MIAMI AND GREATER BEACHES

- Places
- People
- Pathways
- PIVOT Team – “Progress, Innovation, and Vision for Our Tomorrow”
- Southeast Florida Regional Climate Change Compact – 2009

12 of 35



GM&B municipalities have signed the Mayor's Climate Action Pledge

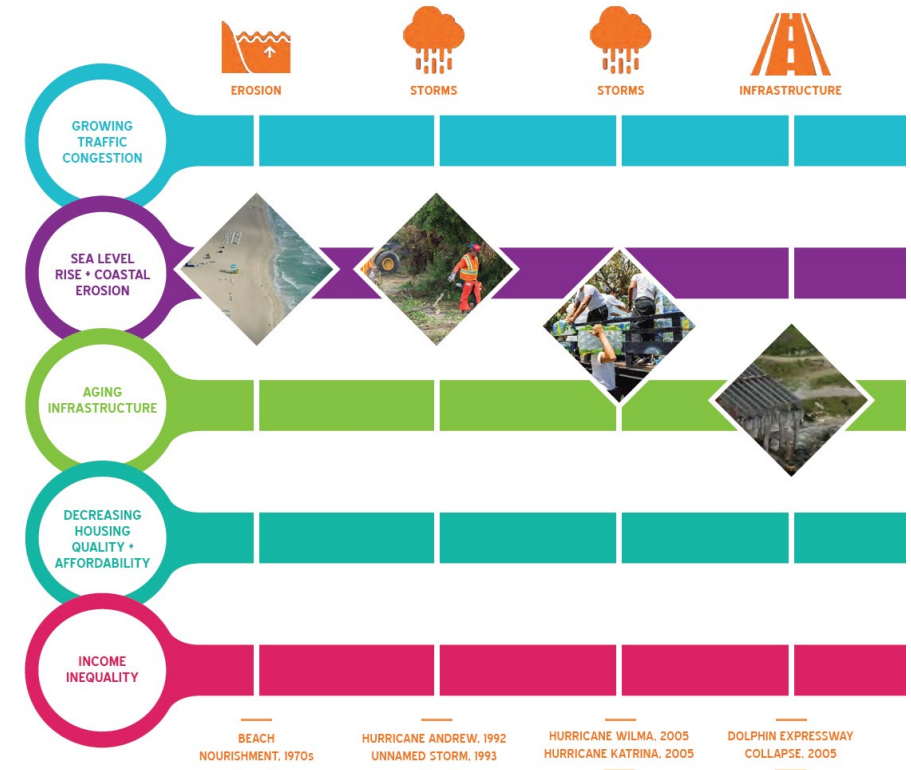


53,000
number of homes located less than 3 feet above high tide

4 inches
Amount sea level has risen since 1992



3-7 inches
additional amount sea level is expected to rise in Southeast Florida by 2030



TEXAS COASTAL RESILIENCY MASTER PLAN



- Statewide Plan – a strategic pathway to restore, enhance and protect the coast
 - ☐ Protect and promote a vibrant and resilient Texas coast
 - ☐ Support and sustain a strong economy and healthy environment
 - ☐ For all who live, work, play or otherwise benefit from the natural resources and infrastructure along the Texas coast
- Identified 8 Priority Issues of Concern (existing and future conditions)
- Project-centric
- Uses population, property values and wages to offset/compare project costs

MENTIMETER QUESTIONS

Are there other case studies that you're familiar with relevant to what the Transportation RMP is trying to achieve?



INPUT ON DATA COLLECTION

DATA COLLECTION



- Existing facilities and characteristics
- Hurricane evacuation routes/maps
- LRTP and ITS Plans data
- Bridges and causeways
- Rails, airports, freight terminals, seaports, and spaceports



- Shores/beaches
- Water bodies
- Floodplains
- Agri-rural lands
- Conservation and preservation areas
- Stormwater system
- Habitat areas

WHAT OTHER DATA SETS CAN YOU PROVIDE TO COMPLETE THE PUZZLE?



MENTIMETER QUESTIONS

What other relevant data sets can you provide?



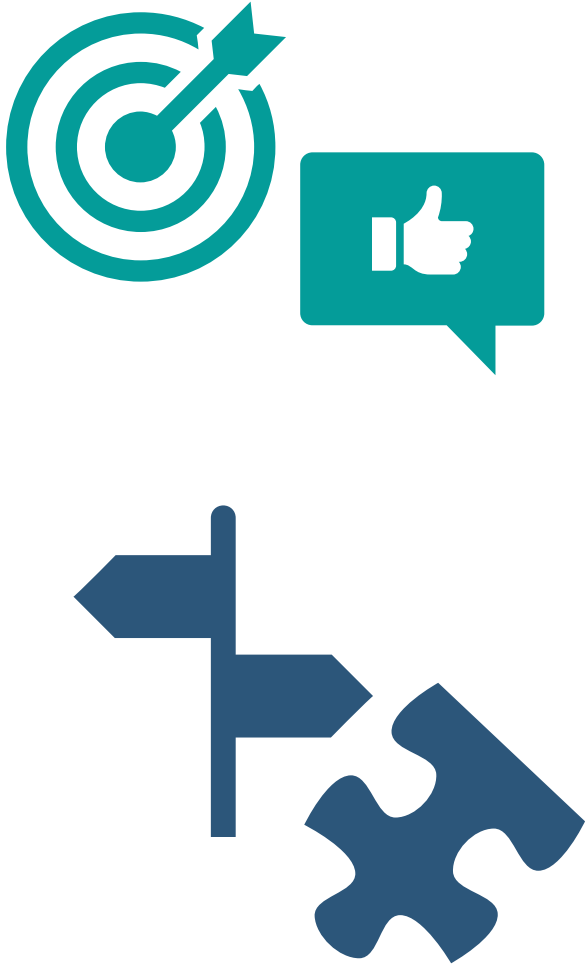
KEY STAKEHOLDERS & UNDERSERVED COMMUNITIES TO ENGAGE

DIFFERENT ROLES FOR THE SAME GOAL



Group	Role	Schedule
Board	<ul style="list-style-type: none"> • Provide feedback • Adopt the Transportation RMP • Educate their community/constituency on the Transportation RMP 	<ul style="list-style-type: none"> • End of Task 3: Data Collection and Analysis • End of Task 4: Define Shocks and Stressors • End of Task 5: Transportation Resiliency Master Plan Development
Committees	<ul style="list-style-type: none"> • Provide feedback • Educate their community on the Transportation RMP 	<ul style="list-style-type: none"> • End of Task 3 • End of Task 4 • End of Task 5
Focus Group	<ul style="list-style-type: none"> • Provide technical/detailed feedback • Input needed about specific shocks/stressors 	Task 4
Key Stakeholders	<ul style="list-style-type: none"> • Provide specific background information on conditions • Act as a Sounding board for strategies • Potentially responsible for some strategies 	Targeted input during Task 3 and Task 5
Underserved Communities	<ul style="list-style-type: none"> • Education/information exchange with project team • Identify missing socioeconomic elements in data collection and analysis 	Targeted input during Task 3 and Task 4
General Public/Special Interest Groups	<ul style="list-style-type: none"> • Educate about resiliency • Feedback to inform Task Force and SCTPO Boards/Committees • Share Information on other platforms/events to disseminate information/educate about the Transportation RMP 	High-level, targeted information/education dissemination in Tasks 3 and 4/5

ENGAGING STAKEHOLDERS AND UNDERSERVED COMMUNITIES



- Provide specific background information on conditions
- Act as a Sounding board for strategies
- Potentially responsible for some strategies
- Education/information exchange with project team
- Identify missing socioeconomic elements in data collection and analysis



WORKING LIST OF STAKEHOLDERS



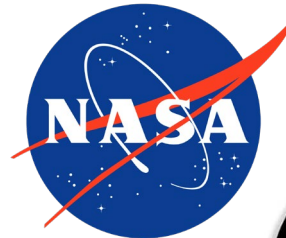
U.S. Department of Transportation

Federal Highway Administration



NCCOS

NATIONAL CENTERS FOR COASTAL OCEAN SCIENCE

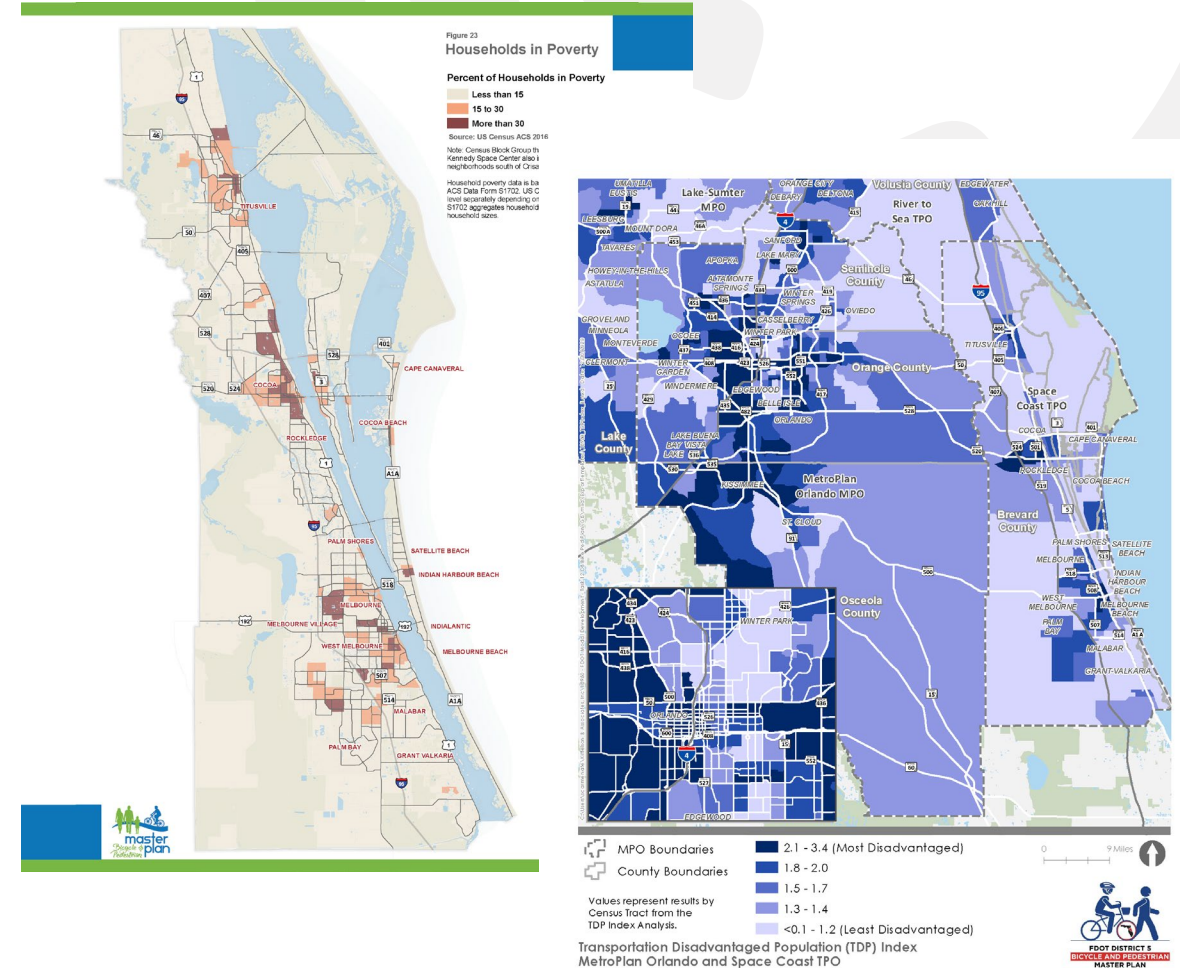


ECONOMIC DEVELOPMENT COMMISSION
FLORIDA'S SPACE COAST



IDENTIFYING UNDERSERVED COMMUNITIES

- Focus of the outreach is to target **Transportation Disadvantaged populations**
- Transportation Disadvantaged populations meeting one or more criteria:
 - ☐ Overburdened renters
 - ☐ Population under age 18 in a single-parent household
 - ☐ Population with a disability
 - ☐ Population under age 10
 - ☐ Population over age 75
 - ☐ Workers without vehicle access
 - ☐ Population with limited English proficiency
 - ☐ Low-income population
 - ☐ Communities of Color (All other races and ethnicities Non-White Non-Hispanic)



NEXT STEPS

NEXT STEPS

- Data Collection and Analysis Activities
- Stakeholder and Underserved Communities meetings
- Next Task Force Meeting: May 2021
 - ☐ Review Draft Influence Areas and Current Conditions
 - ☐ Vulnerable Communities Identification
 - ☐ Discuss long list of Shocks/Stressors and identify short list for this Plan





Thank you!

Sarah Kraum, Senior Transportation Planner

(321) 350-9263

sarah.kraum@brevardfl.gov

<http://sctpo.com/>

What is your favorite place in Brevard? (Park, city, restaurant, etc)



What other relevant plans/programs does your organization/municipality have or are working on?

USACE southeast study

IRLC Lagoon resilience plan

city-specific Sustainability Action Plans

Brevard Local Mitigation Strategy

Municipal Sustainability Action Plan

Resilient Titusville (complete)

Following up on our own 2019 vulnerability assessment, we are preparing Cape Canaveral's first resiliency action plan.

City of Cocoa Resiliency Plan

R2C Climate Cohort program

What other relevant plans/programs does your organization/municipality have or are working on?

City-specific resiliency plans

The City of Melbourne is currently developing a Coastal Resiliency Plan.

IRLNEP Climate Ready Estuary Report will be adopted by IRL Council BOD in February 2021

Town of Malabar-Stormwater Master Plan

stormwater master plan

purposeful comprehensive plan updates for zoning and height restrictions

Assessing potential road threats.

Peril of Flood

Where is your organization/municipality at regarding Transportation resiliency?



Are there other case studies that you're familiar with relevant to what the Transportation RMP is trying to achieve?

Norfolk VAq

Road Condition Assessment

local codes that support mitigation in LMS

EM Evacuation routes

EM Evacuation routes

Codes that support mitigation in LMS from all Jurisdictions in Brevard

What other relevant data sets can you provide?

City/County Capital Improvement Plans?

maybe: sustainability assessment matrix (stressors for city)

Land value map

Local City/County ESRI ArcGIS Data

Vulnerable population data

Road Condition Assessment

local hazards list in LMS

Invitees		
Name	Agency/Organization	Attended
Abby Johnson	SJRWMD	Y
Alexis Miller	Satellite Beach	Y
Alix Bernard	Cocoa - Planning	Y
Bob Musser	Port Canaveral	Y
Brenda Suprenant	Cape Canaveral	Y
Bryant Smith	Cocoa - Public Works	Y
Casey Lyon	FDOT	Y
Corrina Gumm	Brevard County - Public Works	Y
Courtney Barker	Satellite Beach	Y
Daniel Martoma	West Melbourne	Y
Darcie Mcgee	Brevard County - Natural Resources	Y
David Wilkison	Melbourne	Y
Duane De Freese	Indian River Lagoon Council	Y
Eddy Galindo	Titusville	Y
Edward Fontanin	Brevard County - Utilities	Y
Elizabeth Mascaro	Melbourne Beach	N
Holly Abeels	Florida Sea Grant/UF/IFAS Extension	Y
Jane Hart	Brevard County - Planning	Y
Jared Francis	Cocoa Beach	N
Jason Mahaney	Grant-Valkaria	Y
Jeffery Ball	Brevard County - Planning	Y
John Cooper	Rockledge	Y
John Scott	Brevard County - Emergency Management	N
Leo Angelero	Florida DEP	Y
Lisa Morrell	Malabar	Y
Mark Ryan	Indian Harbour Beach	Y
Michael Casey	Indialantic	N
Michael McCabe	Melbourne Tillman WCD	Y
Roshanna White	EPA	Y
Steve Shams	FDOT	Y
Suzanne Sherman	Palm Bay	Y
Tara McCue	ECFRPC	Y
Todd Corwin	Melbourne	Y
Tom Frick	SJRWMD	Y
Zac Eichholz	Cape Canaveral	Y
Other Attendees		
Name	Agency/Organization	Attended
Debbie Coles	Brevard County - Emergency Management	Y
Don Kean	Brevard County - Utilities	Y
Abigal Morgan	Cocoa - Assistant City Engineer	Y