



Transportation Disadvantaged Community Conversation Agenda

Transportation Resiliency Master Plan

May 12, 2021

Virtual via Microsoft Teams

2:30 PM – 4:00 PM

1. Introductions
2. Purpose of the Community Conversations
 - a. Understand the impacts/shocks/stressors and transportation barriers Transportation Disadvantaged (TD) populations experience
 - b. Identify key community services currently available
 - c. Identify other community leaders to engage in specific areas
3. Overview of Master Plan
4. Role of the Community and Community Engagement
5. Open Discussion
 - a. What are the most important/key community services and assets in Brevard County?
 - b. What transportation infrastructure is critical to meeting the goals of the people served by your organization?
 - c. What impacts/shocks/stressors have negatively impacted the people your organization serves?
 - d. Are there specific shocks/stressors that impact certain populations uniquely?
6. Next Steps
7. New Initiatives



Transportation Disadvantaged (TD) Community Conversation

Date: Wednesday, May 12, 2021

Time: 2:30 PM – 4:00 PM

Location: Virtual via Microsoft Teams

Attendees:

- Sarah Kraum [Space Coast Transportation Planning Organization (SCTPO)]
- Laura Carter (SCTPO)
- Abby Hemenway (SCTPO)
- Alan Woolwich (Brevard County)
- Amanda Wilhelm (United Way of Brevard)
- Carmen Baez [Space Coast Area Transit (SCAT)]
- Jennifer Keyser (Aging Matters Brevard)
- Josh Jensen (Aging Matters Brevard)
- Keith Heinly (United Way of Brevard)
- Sandra Simmons (Brevard Schools)
- Sean Odle (Brevard Alzheimer's Foundation)
- Susan McGrath [Brevard Achievement Center (BAC)]
- Mary Raulerson [Kittelsohn & Associates, Inc. (KAI)]
- Chris Bame (KAI)

Introduction:

- The purpose of this meeting was to understand the impacts of shocks/stressors to TD communities, identify currently offered community services, and identify other community leaders to engage. The meeting agenda included introductions, discussions about the purpose of community conversations, an overview of the Transportation Resilience Master Plan (Transportation RMP), an open discussion, and next steps. A list of the meeting invitees and attendees is attached to this meeting summary.

Meeting Highlights:

The meeting discussion was guided by a PowerPoint presentation and feedback was collected through an open discussion throughout the meeting. Key discussion points from the meeting were:

- Specific concerns related to TD communities.
 - Transportation Deserts: Some areas in Brevard County have few or no travel options for people walking, biking or taking transit. These areas/communities are not served by public transit and have roadways that are not accessible or safe for people walking and biking. Large employers that are not served by public transit due to being located on barrier islands or behind gates, should also be considered. Identifying these transportation deserts may inform challenges facing TD communities.
 - Bicycle and Pedestrian Safety: In some areas of Cocoa, for example walking under I-95, children are walking or biking without access to safe facilities. Safe facilities should be provided on both sides of the road.
 - Transit Access: Accessible transit is important to maintaining employment and independent living for some community members with disabilities. Extending transit service to cover all of Brevard County is a difficult task due to the size of the county and the level of funds available to operate transit. There are also some barriers to transit servicing areas in adjacent counties. (It was shared that the Senior Resource Alliance/Community Coach is providing transit service into Indian River County.)
- How might shocks/stressors affect TD communities differently than other communities in Brevard County?
 - Seniors and people with disabilities are sometimes affected similarly by natural disasters if they need to shelter in place. If evacuations are required, they may be more complex and have unique needs at shelters.
 - Several of the organizations represented in the meeting coordinate with SCAT to arrange/coordinate evacuating community members to shelters.
 - The effect of natural disasters on communities and organizations is dependent on which shelters are open, which is decided on a storm-by-storm basis. Organizations that provide food to shelters need to maintain access to the shelter throughout the duration of the shock.
- Other ongoing work related to TD communities includes:
 - A research group at the Florida Institute of Technology (FIT) is investigating the transportation needs of disabled populations. The group is currently looking for research grants.
- The Transportation RMP Team plans to engage directly with communities. Some key TD communities that have been identified include Cocoa, Downtown Titusville and Melbourne.
- The meeting included a discussion of possible contacts and connections to TD communities in Brevard County.
 - Kim Agee (Downtown Melbourne)

- Marcia Gaedcke (Titusville Chamber)
 - Law Enforcement – Police Community Organizations
 - Abby Hemenway may know a contact at City of Cocoa
 - Amanda or Keith may know community leaders in Cocoa through their census work
 - Susan will follow-up with additional contacts for organizations serving people with a disability
 - Alan Woolwich will follow-up with contacts for several neighborhoods in Brevard County
- During the meeting, several corridors and areas of importance were specifically noted.
 - US 1
 - Causeways/Bridges
 - Space Center
 - I-95
 - Viera north/south corridors
 - During evacuations or natural disasters shelters are opened on a case-by-case basis. Depending on which shelters are open, different routes may be critical based on this.
 - Barefoot Bay
 - Mims
 - Cape Canaveral
- Transportation barrier may make it difficult for companies to hire employees in a tight labor market.
- SCTPO is developing a continuing coordination program to engage TD populations/communities and requested information/advice on who, how and when to engage
 - Several suggestions of who to engage were identified above and several attendees noted that they could provide additional information after the meeting
 - There is currently no mechanism or occasion when the organizations that provide services to TD populations meet or coordinate routinely
 - Transportation is a common thread across the services needed by TD populations and/or provided by various community support organizations

The agenda, presentation, and list of the invitees/attendees are attached.

Invitees		
Name	Agency/Organization	Attended
Abby Hemenway	SCTPO	Yes
Georganna Gillette	SCTPO	No
Laura Carter	SCTPO	Yes
Sarah Kraum	SCTPO	Yes
Josh Jensen	Aging Matters Brevard	Yes
Marty Mercado	Aging Matters Brevard	No
Amar Patel	Brevard Achievement Center (BAC)	No
Susan McGrath	BAC	Yes
Tim Timmermann	Brevard Alzheimer's Foundation	No
Alan Woolwich	Brevard County	Yes
Sandra Simmons	Brevard Schools	Yes
Melissa Wilbrandt	Bridges BTC	No
Jana Bauer	Career Source Brevard	No
Mike Hoenick	Family Promise of Brevard	No
Terry Jordan	Space Coast Area Transit (SCAT)	No
Patricia Knapp	Students at Risk	No
Amanda Wilhelm	United Way of Brevard	Yes
Caron Partridge	United Way of Brevard	No
Keith Heinly	United Way of Brevard	Yes
Christopher Bame	Kittelson & Associates (KAI)	Yes
Mary Raulerson	KAI	Yes
Other Attendees		
Name	Agency/Organization	Attended
Carmen Baez	SCAT	Yes
Jennifer Keyser	Aging Matters Brevard	Yes
Sean Odle	Brevard Alzheimer's Foundation	Yes



RIDE the **WAVE**
TO RESILIENCY

TRANSPORTATION RESILIENCY MASTER PLAN

TRANSPORTATION DISADVANTAGED COMMUNITY CONVERSATION

MAY 12, 2021

VIRTUAL VIA MICROSOFT TEAMS

2:30 PM – 4:00 PM

INTRODUCTIONS

LET'S GET TO KNOW ONE ANOTHER!

- Name
- Key focus of your organization



ABOUT THE TPO

- Mission and Goals
- Why Resiliency Matters
 - FAST Act



MULTI-FACETED ENGAGEMENT APPROACH



AGENDA

- Purpose of the Community Conversations
- Overview of Master Plan
- Role of the Community and Community Engagement
- Open Discussion
- Next Steps
- New Initiatives

PURPOSE OF THE COMMUNITY CONVERSATIONS

MEETING PURPOSE

- Understand the impacts/shocks/stressors and transportation barriers Transportation Disadvantaged (TD) populations experience
- Identify key community services to access and protect
- Identify other community leaders to engage in specific areas

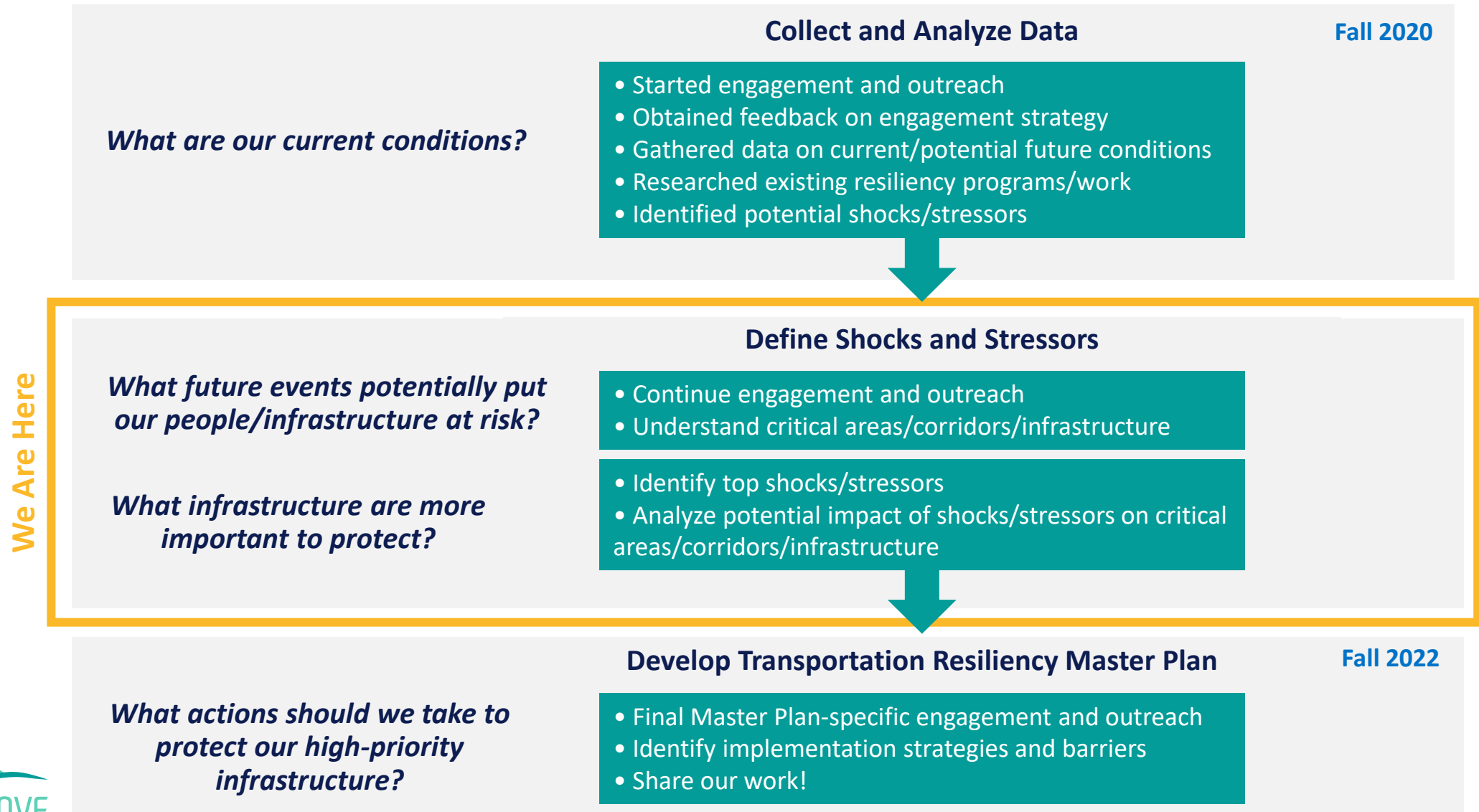


OVERVIEW OF TRANSPORTATION RESILIENCY MASTER PLAN

KEY TERMS/COMMON LANGUAGE

- **Shocks** – Single, sometime sudden, events that threaten a community
- **Stressors** – Continuous or re-occurring issues or events that impact or weaken the fabric of a community on a day to day or cyclical basis
- **Sustainability** – Can be separated into environmental, social/cultural, and economic sustainability; development that meets the needs of the present without compromising the ability of future generations to meet their own needs
- **Resiliency** – The ability to bounce back from events and forces that negatively impact natural and built environment resources; these impacts are also known as shocks and stressors
- **Infrastructure** – The built environment that makes up the physical systems people and communities interact with in their daily lives, such as roadways and bridges
- **Assets** – The specific resources that provide value to a group of people or wildlife; value can be derived in a monetary sense (economic drivers) or from an ecological sense (biodiversity)

WHAT WE'VE DONE AND WHERE WE'RE GOING



LONG LIST OF SHOCKS/STRESSORS

- Aging Infrastructure
- Flooding
- Funding
- Sea Level Rise
- Community Connections/Affordability
- Hurricane/Storm Surge
- Public Events/Congestion
- Catastrophic Events
- Shoreline Erosion
- Extreme Heat/Drought
- Security (e.g., cyber-attacks)
- Connected and Autonomous Vehicles (CAV)/Electric Vehicles (EV)/Intelligent Transportation System (ITS)
- Pandemic
- Safety
- Bike/Pedestrian/Transit
- Daily Congestion

LET'S DISCUSS!

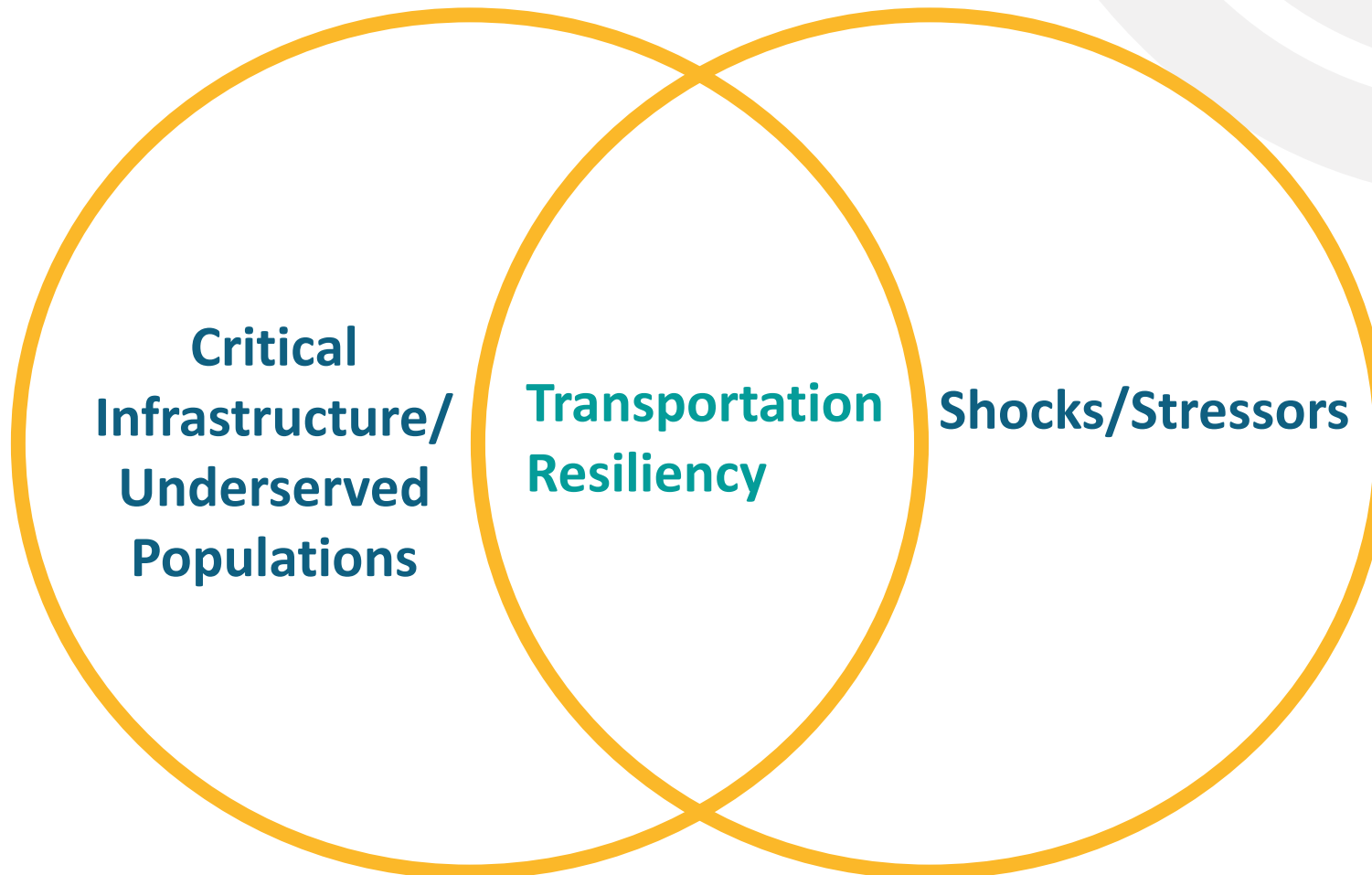
What impacts/shocks/stressors most concern you?

Is anything missing from this long list?

ROLE OF THE COMMUNITY AND COMMUNITY ENGAGEMENT

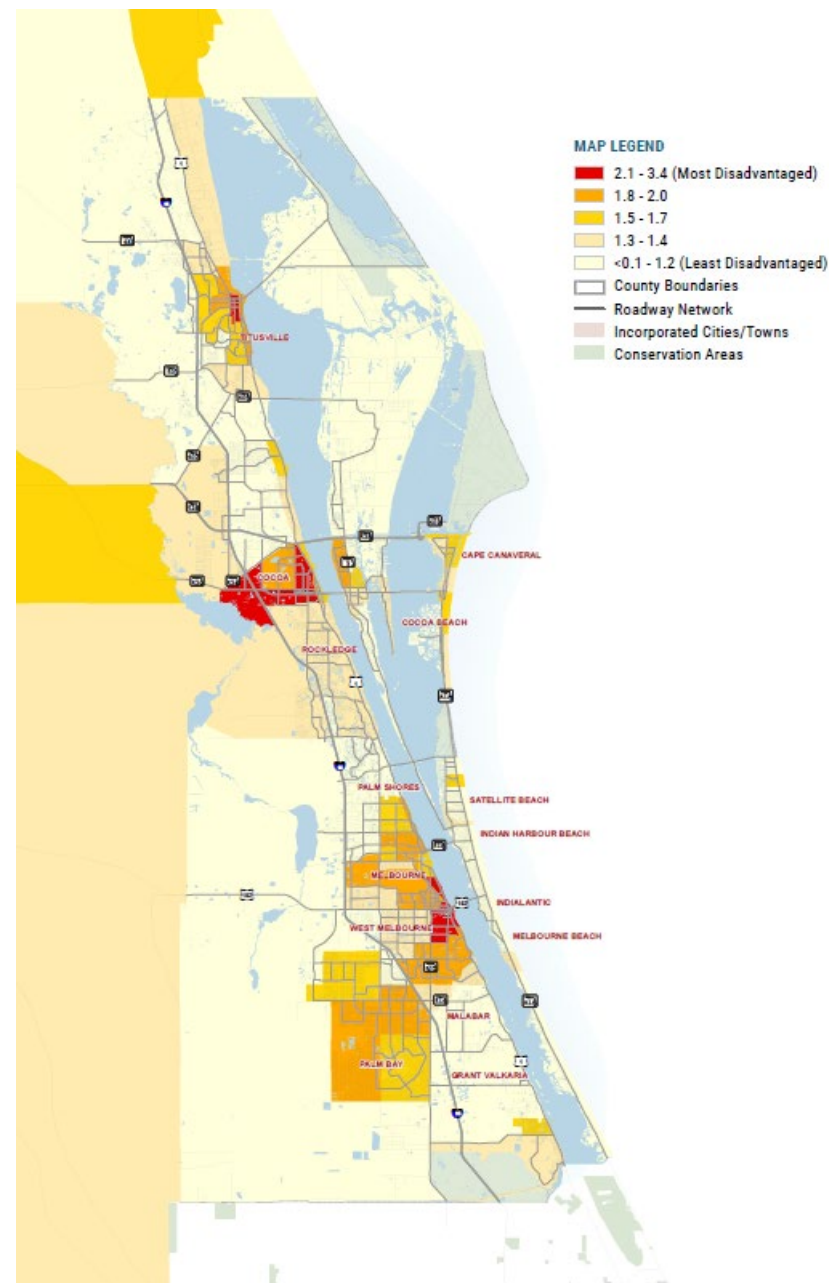
TRANSPORTATION FOCUS

- The people and infrastructure at risk
- The infrastructure that serves critical links for communities



DATA USED TO IDENTIFY TRANSPORTATION DISADVANTAGED COMMUNITIES

- Criteria considered:
 - ☐ Overburdened renters
 - ☐ Population under age 18 in a single-parent household
 - ☐ Population with a disability
 - ☐ Population under age 10
 - ☐ Population over age 75
 - ☐ Workers without vehicle access
 - ☐ Population with limited English proficiency
 - ☐ Low-income population
 - ☐ Communities of Color (All races and ethnicities beside White Non-Hispanic)
- What other populations should be considered beyond those we've looked at?**
- Who are the community leaders to engage with in Downtown Titusville, Cocoa, and Downtown Melbourne?**



OPEN DISCUSSION: WE WANT TO HEAR FROM YOU!

- What are the most important/key community services and assets in Brevard County?
- What transportation infrastructure is critical to meeting the goals of the people served by your organization?
- What impacts/shocks/stressors have negatively impacted the people your organization serves?
- Are there specific shocks/stressors that impact populations uniquely?

NEXT STEPS

- Follow-up with community leaders/other groups
- Task Force Meeting #2
 - Define shortlist of shocks/stressors for focus in this Plan
- Focus Group Discussions
 - Brainstorm scenarios/projections for top shocks/stressors
- Continue educational campaign



NEW INITIATIVES

- Development of SCTPO and Transportation Disadvantaged populations continuing coordination program
- Who should we coordinate with?
- How often should we coordinate?
- What methods?





Thank you!

Sarah Kraum, Senior Transportation Planner

(321) 350-9263

sarah.kraum@brevardfl.gov

<http://sctpo.com/>