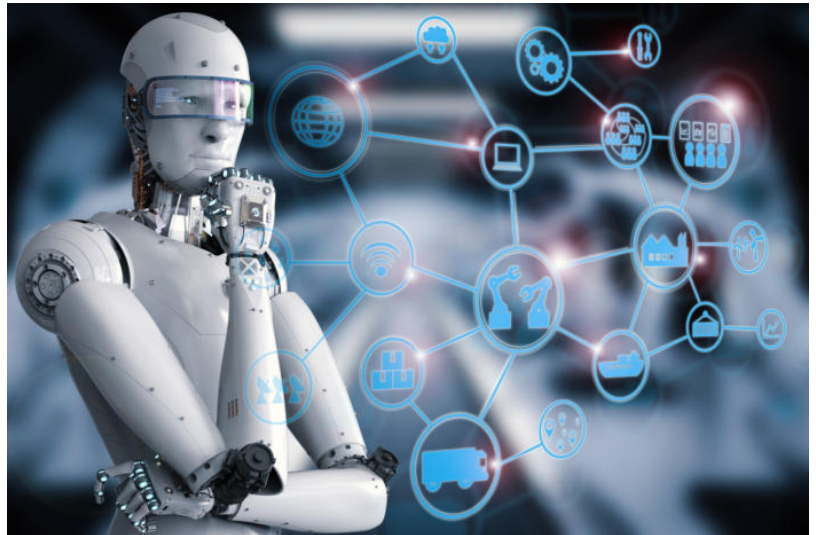


## RTM 10 Real Time Access Management

### Imagine for a minute if you could:

- **Stop unauthorized access** into your Lawson system and any other deployed application.
- **Eliminate expensive and complex implementation issues** associated with leading two factor authentication offering.
- **Use any access method** including TOTP Codes, SMS Messages and Telephony.
- **Deploy on-premise or in the Cloud** in conjunction with Active Directory.
- Utilize in conjunction with **iTK's RTM Managed Service** support offering that is deployed with numerous Lawson ERPs.



Embedded Artificial Intelligence  
ensures Maximum Security for your System

**For more Information please contact:**

[www.itktechnologies.com/contact-us/](http://www.itktechnologies.com/contact-us/)

**According to Wombat 2018 State of the Phish, "76% of all organizations were affected by a Phishing attack in 2018"**