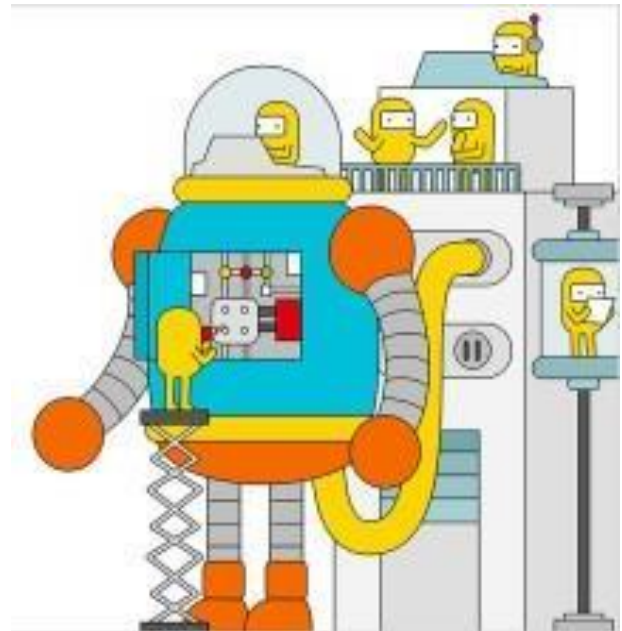


## RTM 10 Real Time Performance Management

### Imagine for a minute if you could

- Detect and resolve security threats and vulnerabilities in real time with embedded AI based predictive analytics.
- Reduce support costs and improve user satisfaction with nanosecond event monitoring to support interactive decision making.
- Control supply chain fraud waste and abuse which is both labor intensive and expensive to detect with pre-built analytics.
- Detect and eliminate duplicate invoice payments to your vendors which account for .5% to 1% of your annual payments. Tens of Millions detected to date.



**iTK's powerful architecture incorporates AI and Machine Learning to support realtime analytics**

**iTK Technologies Remote Transaction Monitoring Platform (RTM) was named one of the most innovative products by CIO Magazine**



# BeyondPerformance

## Performance Management | Threat Management | Performance Analytics.

### The Technology

Our AI based continuous monitoring services platform has been fine tuned for many critical processes and operations in both IT and Finance. The foundation of RTM is our agent- based JAVA client that extracts and loads transactions into our machine learning Continuous Monitoring Platform for analysis.

iTK adopted NoSQL, rather than RDBMS, for storing data. Our NoSQL distributed database is document-oriented database and designed to store, retrieve, and manage document-oriented or semi-structured data. It is an ultra-fast, Cloud based compute engine that can analyze millions of data elements in real-time. While traditional BI systems analyze information based on SQL report results daily, weekly or monthly, RTM 10 can sense and respond to changing conditions immediately.

### The People

As you can see, our architecture and design are unique, setting us apart from everyone else in the Lawson services market. Although our technology sets us apart from others that offer managed services—our ERP systems and application focused technical staff really makes the difference in the delivery of our service.

**iTK Technologies Remote Transaction Monitoring Platform (RTM) was named one of the most innovative products by CIO Magazine**



# BeyondPerformance

Our powerful team is comprised of both functional application specialists plus software engineers who understand the inside of the Lawson ERP application. This unique blend of skills enables us to dig deep into Lawson and surface the issues affecting application performance and reliability. In addition, we have embedded AI, self-learning and Big Data tools that work in real time to surface and resolve issues that affect procure to pay processes, performance, reliability and security.

## The Offering

iTK managed service offering can be customized to your needs, but our 8 most commonly most deployed include:

- Performance Monitoring for deployed resources that include CPU, memory, storage and network.
- Transaction monitoring for preventing & detecting fraud, waste and abuse.
- Transaction analysis for change, adds, inquiries, and deletes.
- Analytics based fault detection, correlation and correction for SoD, system patching and security reviews.
- Support for all Lawson applications and add-ins.
- Duplicate invoice and duplicate invoice detection.
- Enhanced cyber threat monitoring compared to Lawson.
- Application load testing.

**iTK Technologies Remote Transaction Monitoring Platform (RTM) was named one of the most innovative products by CIO Magazine**



# BeyondPerformance

## Why Subscribe to iTK Technologies RTM 10 Managed Service

- The cost of the entire program is significantly less than the FTE costs of one system administrator.
- Improved user satisfaction and Quality of Service 24/7 with an SLA.
- No lapse in coverage due to PTO.
- No turnover costs associated with staff changes.
- No training costs.



**iTK Technologies Remote Transaction Monitoring Platform (RTM) was named one of the most innovative products by CIO Magazine**