

INSIDE

SUMMER RE-CAP	1
THE CAB AND THE CABOOSE	2
TIMETABLE	5
AP CORNER	6
SEMI-HANDLAID FLEXTRACK	7
GSD INFO	8
GS RPM FLYER	9



WEBSITE

www.nergsd.com

Contact email addresses
can be found on Page 7 and
on the website. Note that
the GSD will no longer be
using the Yahoo email
accounts.



The WHISTLE POST

The Official Publication of the Garden State Division of the NMRA Northeastern Region

A Re-Cap of Summer 2015 Events

Article and Photos by Bruce De Young, MMR

I would like to share with you one person's perspective of two great events that took place this summer. The first was our GSD Summer Event at the Delaware Water Gap, and the second was the NRMA National Convention in Portland, Oregon. Both events occurred in August.

There is nothing as rewarding to the GSD volunteers who work behind the scenes to plan Division events as when attendance at those events exceeds expectations. That is exactly what happened on Saturday, August 1st at our Summer Event near the Delaware Water Gap. The day began with lunch at the Broadway Pub in the historic Colonial Hotel in Bangor, Pennsylvania. Bangor is a neat old town about 15 minutes from the Water Gap in the heart of the Pennsylvania Slate Belt. Over 85 attendees joined us there for lunch, and another 20-25 stopped by to pick up maps for the afternoon layout tours. Yes, we had in the neighborhood of 105 attendees at this event! We actually had NMRA members from three Regions and six Divisions in attendance. We had one member down from the Southern Tier Division of the Niagara Frontier Region; one from the Philadelphia Division of the MER; plus groups from the Metro North Division, NER; the Susquehanna Division, MER; the New Jersey Division, MER; and of course the Garden State Division.

Besides lunch in Bangor, the Slate Belt Heritage Center opened their doors for us. Many in attendance walked the two blocks from the Pub to the museum before hitting the

road to visit the layouts. Those layouts included Ed Suhy's Santa Fe, Harold Werthwein's Erie, and Tony Koester's Nickel Plate. Many thanks to Ed, Harold, and Tony for helping to make this day a great success. In planning this event, we tried to make it 'family friendly', and we were pleased to see a good number of spouses and even a few children in attendance!

(continued on Page 3)

**Below: GSD members enjoy lunch and conversation at the Broadway Pub in the Colonial Hotel in Bangor.
(Photo by Jim Walsh)**





How to Get the Most from Your NMRA Membership

This has been an eventful summer – that is a summer full of events. Look elsewhere in this issue of the Whistle Post for a report on both the GSD Summer Meet and the NMRA National Convention.

Also, right around the corner is the joint MER/NER Convention here in New Jersey. This will take the place of our regular fall meet, so I hope that you can stop by for part or all of the Convention. Again, keep reading this issue of the Whistle Post for more information on the Delaware Valley Turn that runs from October 22-25, 2015 in Mount Laurel.

While speaking of events, I want you to know that plans are moving forward for our Winter Meet in late January to be held in Ramsey, a joint Spring Meet with the NJD, and a Summer Meet in the Morristown area. That is consistent with our practice of moving our meeting location around within the Division. Information on these upcoming meets will be posted on the website, included in future issues of the Whistle Post, and distributed to members via e-mail.

On a different subject, all Division Presidents within the Northeastern Region have been asked by Region President John Doehring to help him identify 3-5 members of their division who would be interested in joining a Region Volunteer Team. There are plenty of areas in which to volunteer, including the Convention Committee, the website team, helping out with the Region Newsletter – The Coupler, serving on the Nominating Committee, serving on the Contest Committee, or helping out with recruitment of new members. Please let me know if you would like me to forward your name to the Region to work in one of these areas. You can reach me at pres@nergdsd.com. By the way, serving on one of these Region Committees will help you earn your Volunteer Certificate within the AP Program!

Finally, as this year's schedule of events unfolds, I would urge you to attend those events. We really do have a great time together. While you are at it, why not go out of your way to also bring a model railroader who is not a member along as a guest. Who knows, that guest might just become a new member. Help us grow our Division. **WP**



Prototype and Era

For those who have already selected a real railroad and time frame for modeling, you will understand the benefits of limiting yourself to a prototype and era. If you have not narrowed your modeling down to a favorite road or two (or three), but have thought about becoming more focused, the following are my thoughts on the subject.

Looking at scale first, it is obvious that HO offers the most opportunities to best model almost any railroad. However, it can also be thought of as the easy way out. If you really want to model a certain railroad in any scale, you can; it may just take more effort.

I've noticed that the best railroads featured in the hobby press and at open houses tend to have a focus. Also, most operating railroads are focused because the nature of realistic operations requires the equipment to make sense. A prototype based layout will transport you into a different world with the scenery, equipment, and paint schemes all fitting together. Operations could still be done with an illogical mix of equipment, but you would not benefit from the feel of a different time and place.

Can more than one railroad be modeled? Certainly. I model both PC and CNJ as independent systems with interchange, but I'm able to do much more than only two paint schemes. PC had a mix of PRR, NYC, and NH paint schemes throughout my early 1970s era, as repainting took years to complete. CNJ had a variety of their own paint schemes, and hosted pool trains and joint services from several other roads, including B&O, Reading, and EL. For the early 1970's, specific trains (not just random trains) powered with these locomotives are absolutely prototypical.

Another reason to narrow down the era is money, as in cost savings on purchases. For a smaller layout, a narrow era will definitely save you money. There will no longer be the need to buy everything within a 20 or 30 year time span scattered throughout the country. This can take some will power, as there are some really nice models being produced that may be just outside your era. There is for me, as both CNJ and PRR had some really neat equipment scrapped just a few years earlier. On the other end I have Conrail, which does not yet exist in my model world, providing the other bookend.

Narrowing down the prototype and era when building a layout has worked well for me, and it may work well for you also. **WP**

NEXT DIVISION MEETING

TIME:

**THERE IS NO FALL GSD MEET.
THE GSD WINTER MEET WILL
BE HELD ON JANUARY 23 IN
RAMSEY, NJ.**

**PLEASE CONSIDER ATTENDING
THE MID-EASTERN REGION
CONVENTION ON OCTOBER 22-
25 AND THE GARDEN STATE
RPM MEET ON NOVEMBER
14TH.**

LOCATION:

**ADDITIONAL INFORMATION CAN
BE FOUND ON PAGES 8 AND 9**

WEBSITE FOR MEETS:

SEE PAGE 5 AND

**[HTTP://WWW.NERGSD.COM/
UPCOMING.HTML](http://www.nergsd.com/upcoming.html)**

AGENDA:

HAVE FUN!

LEARN!

MEET FELLOW MODELERS!

(Re-Cap continued from Page 1)

Later in August my wife and I ventured forth to Portland, Oregon to attend the NMRA's National Convention. I know that it was a long distance from New Jersey, but we have five grandkids living about 2 hours from Portland, so it was an easy sell to the 'Powers That Be'!

This was my third National Convention, and each seems better than the last. Then again, maybe I am learning how to make the most of all that is offered at a National. It certainly is all about the choices that you have to make, because you can't see it all or take part in all that is offered. There are great clinics being offered from early morning to late evening, the lure of the Contest Room to drool over great modeling from around the world, operating sessions from which to choose on layouts whose names you very well might know, layout tours, prototype tours, non-rail tours – you get the idea. Add to that the 'normal' attractions in a new city – restaurants, tourist sites, and in

Portland, many micro-breweries, and you can see that pre-planning is vital! The Portland Convention was one of the best attended in many years.

Because of its location, there was a great concentration of clinics about logging and the lumber industry. Even though my interest is the logging railroads of Pennsylvania, I learned a lot from attending clinics about logging in the northwest. Add to that visiting some great local layouts, some prototype attractions, and some non-rail attractions, and the time flew by. Of course, there were also plenty of opportunities to relax and chat with both old and new acquaintances. I was happy to see several familiar faces from the GSD, NJD, and the NER.

The following is a sampling of photos from our time at the Portland Convention:

(continued on Page 4)

Right: Tom Miller has both a live steam (1.5" scale) outdoor layout and a huge F-Scale (1:20.3) Layout. Here is a Kubota Diesel powered loco that pulled us around his complex. The next day he ran steam.



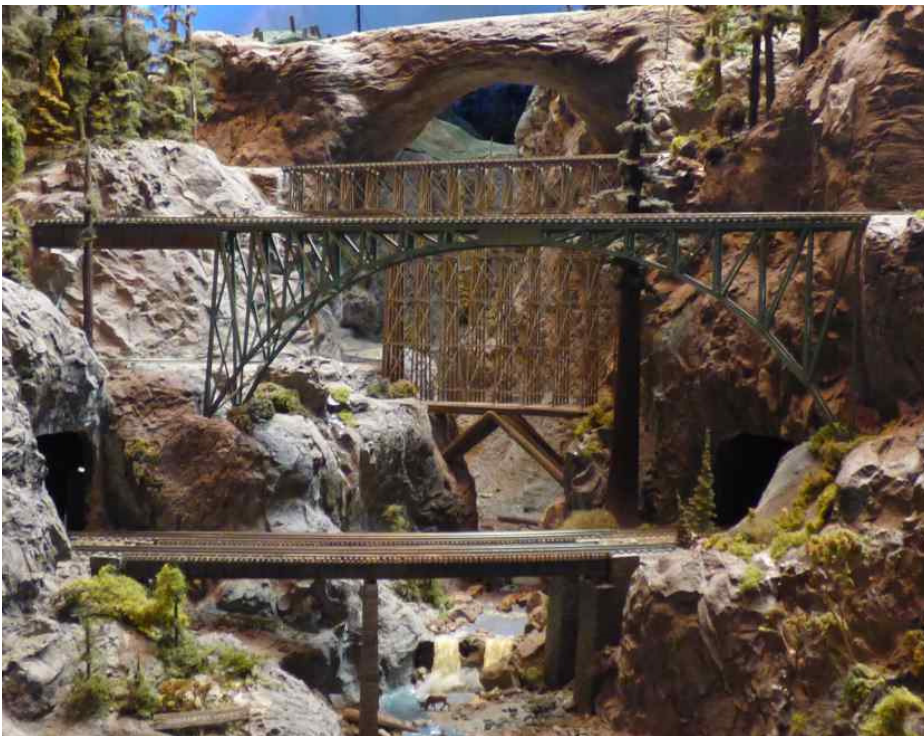
(Re-Cap continued from previous page)

Right: And here is a scene from Tom's F-Scale layout.

Next year's convention is in Indianapolis in early July. Indy is within reasonable driving distance, so that could be your opportunity to attend a National Convention. I hope to see some of you there! **WP**

Below: We visited two of the local club layouts. The first was the HO scale layout of the Columbia Gorge Model RR Club.

Below Right: The second was the Willamette Model Railroad Club, also in HO scale.



The Timetable

Upcoming Events

GSD Fall Meet No meet to be held. The GSD will support the NJ Division with their MER Fall Convention in October and the Garden State RPM Meet in November.

NJ Division, MER Mid-Eastern Region Fall Convention The NJ Division is hosting the 2015 Fall Convention, the Delaware Valley Turn, for the MER. It will be held in Mt. Laurel, NJ at the Hotel ML on Route 73 between I-295 and the NJ Turnpike from October 22-25. There will be all the features you expect at a regional convention including clinics, tours, contests, layout operations, and more. www.delawarevalleyturn.org

Great Scale Model Train Show, aka "Timonium" The Fall edition of this show will be held October 24-25 at the Maryland State Fairgrounds, 2200 York Road, Timonium, MD. www.gsmts.com

Garden State RPM Meet November 14-15 at the Union County Vocational-Technical School in Scotch Plains. If you haven't been to an RPM meet, this local event is a great one to start with. Clinics, model displays, layout open houses, and vendor tables. Registration and information available at <http://hansmanns.org/ld-op-nj/index.htm> and on Page 9. This is a NMRA supported event.

New York Society of Model Engineers Layout Exhibition November 14-15 and November 21-22 at their club building, 341 Hoboken Road, Carlstadt, NJ. Trains on their HO and O scale layouts will be running. www.modelengineers.org

Allentown Train Meet Associates First Frost Train Meet November 14-15 at the Allentown Fairgrounds Agricultural Hall, Allentown, PA www.allentowntrainmeet.com

The Model Railroad Club of Union, NJ, will hold two weekends of display running for the public starting November 27. <http://tmrci.org>

Ramapo Valley Railroad Club presents their Holiday Train Layout Display on Sundays from 1-4 PM on November 22 and 29, and December 6, 13, and 27. The club is located at 620 Cliff Street, Ho-Ho-Kus, NJ www.ramapovalleyrailroad.com

GSD Winter Meet Saturday January 23 in Ramsey, NJ. Time and location to be announced. Snow date is February 6.

Amherst Railway Society "West Springfield" MA show January 30-31, 2016.

Railroad Prototype Modelers—Valley Forge The 7th semi-annual meet will be held March 18-20, 2016, at the Desmond Hotel in Malvern, PA. 305 attended the 2014 meet! More information on the website www.rpmvalleyforge.com.

(Re-Cap continued from previous page)

Below: Finally, here is a shot of one end of a saw mill diorama from the Contest Room. The model itself was an O-Scale Sierra West kit.



The GSD Welcomes New Members

The following have joined the NMRA and GSD within the last few months. Please welcome them:

John La Rocca

Bob Kempton

Walter Yarrow

Members are reminded that guests attending a meet can join the NMRA as a new member through the Railpass program, and the GSD will pay for it! National, Regional, and Division membership is included.

THE CLUB CAR

Garden State Model

Railway Club

575 High Mountain Road

North Haledon, NJ 07508

www.gsmrrclub.org

The Model Railroad Club

295 Jefferson Avenue

Union, NJ 07083

<http://tmrci.org>

New York Society of Model

Engineers

341 Hoboken Road

Carlstadt, NJ 07072

www.modelengineers.org

Pacific Southern Railway Club

26 Washington Street

Rocky Hill, NJ 08553

www.pacificsouthern.org

Ramapo Valley

Railroad Club

620 Cliff Street

Ho-Ho-Kus, NJ 07423

www.ramapovalleyrailroad.com

Bound Brook Presbyterian

Railroad Club (BBPRR)

Bound Brook Cemetery

Office Building

500 Mountain Avenue,

Bound Brook, NJ 08805

Riley1644@verizon.net

SEND CLUB INFORMATION TO

MEMBERSHIP AND CLUB CONTACT:

TOM CASEY

members@nergds.com

AP Corner *By Bruce De Young, MMR - Achievement Program Chair*

The Achievement Program comes under the jurisdiction of the NMRA's Education Department of which I am the Manager. I recently submitted my report of activity within the AP Program to the NMRA's Board of Directors, and I thought that you might find some of the data interesting.

For the period 1 May 2014 through 31 April 2015 the AP Department has awarded 75 Golden Spike Awards, 293 Certificates of Achievement, and 19 Master Model Railroader Plaques and Certificates.

Region	May	June	July	Aug	Sep	Oct	Nov	Dec	Jan	Feb	Mar	Apr	Totals
AR	0/0/0	0/0/0	0/0/0	0/0/0	0/0/0	0/0/0	0/0/0	0/0/0	0/0/0	0/0/0	0/0/0	6/21/0	6/21/0
BR	0/0/0	0/3/0	0/1/1	0/0/0	0/0/0	0/0/0	0/0/0	0/0/0	0/0/0	0/0/0	0/0/0	0/1/0	0/5/1
EUR	0/0/0	0/0/0	0/0/0	0/0/0	0/0/0	0/0/0	3/0/0	0/0/0	0/0/0	0/0/0	0/0/0	0/0/0	3/0/0
LSR	0/0/0	0/4/0	0/3/0	0/1/0	0/0/0	0/1/0	0/5/0	0/0/0	0/3/0	0/5/0	0/1/0	0/0/0	0/23/0
MCR	1/1/1	0/0/0	1/1/0	0/1/0	0/1/0	1/0/0	4/0/0	0/0/0	0/0/0	0/3/0	0/2/0	1/0/0	8/9/1
MCoR	0/0/0	0/1/0	1/0/0	0/0/0	0/0/0	0/2/1	0/2/0	0/0/0	0/0/0	0/1/0	0/4/0	0/0/0	1/10/1
MER	0/1/0	1/3/0	0/5/2	0/1/0	1/0/0	0/0/0	0/4/0	2/0/0	0/3/0	0/0/0	0/2/0	0/4/1	4/23/3
MWR	1/1/0	0/1/0	0/0/0	2/3/0	0/1/0	0/3/0	0/0/0	0/0/0	0/0/0	0/5/0	0/4/0	1/2/0	4/20/0
NCR	0/1/1	1/2/0	0/3/0	0/0/0	0/1/0	1/0/0	0/0/0	0/0/0	2/4/0	0/2/0	0/2/0	0/0/0	4/15/1
NER	2/8/0	0/1/0	0/2/0	0/1/0	1/1/1	1/2/1	0/2/0	1/0/0	0/6/0	0/3/0	2/6/0	1/11/1	8/43/3
NFR	0/0/0	0/0/0	0/0/0	0/0/0	0/0/0	0/0/0	0/1/0	0/0/0	1/1/0	0/0/0	0/0/0	0/0/0	1/2/0
PCR	0/1/0	0/2/0	0/1/0	0/4/0	0/0/0	0/1/0	0/0/0	0/0/0	0/3/1	0/0/0	1/0/0	0/0/0	1/12/1
PNR	14/7/1	0/2/0	0/3/1	0/3/0	0/3/0	0/2/0	0/12/0	0/4/0	0/0/0	0/1/0	0/3/0	0/0/0	14/40/2
PSR	0/1/0	0/0/0	0/0/0	0/0/0	0/1/0	0/0/0	0/0/0	0/0/0	3/2/0	0/4/1	2/0/0	1/0/0	6/8/1
RMR	0/0/0	0/0/0	3/0/0	0/5/0	0/0/0	0/0/0	0/1/0	0/2/0	0/0/0	0/0/0	0/4/0	0/2/1	6/33/1
SER	0/0/0	1/5/0	0/2/0	0/4/1	1/1/0	0/4/0	1/1/0	0/2/1	0/4/0	1/4/0	0/1/0	1/4/1	4/16/3
SSR	0/0/0	0/1/0	0/0/0	0/0/0	0/0/0	0/2/0	2/0/0	0/0/0	0/0/0	2/0/0	0/0/0	2/3/0	5/11/0
TLR	0/1/0	0/0/0	1/6/0	0/0/0	0/0/0	0/0/0	0/0/0	0/1/0	0/0/0	0/0/0	0/2/1	0/0/0	1/10/1
Totals	8/22/3	3/25/0	6/27/4	2/23/1	3/9/1	3/17/2	10/28/0	3/9/1	6/26/1	3/28/1	5/31/1	13/48/4	75/293/19

Category	May	Jun	Jul	Aug	Sep	Oct	Nov	Dec	Jan	Feb	Mar	Apr	Total
Motive Power	0	1	0	1	1	0	1	1	0	1	0	3	9
Cars	3	1	4	1	1	1	2	0	2	0	3	7	25
Structures	2	4	2	0	1	3	2	1	3	0	4	9	31
Scenery	5	5	4	2	3	1	4	1	2	6	3	8	44
Prototype Models	1	0	1	2	0	0	1	1	0	1	1	1	9
Civil	0	1	2	3	0	2	4	0	3	1	3	4	23
Electrical	5	2	4	5	2	2	4	0	2	6	6	4	42
Chief Dispatcher	0	1	3	3	0	1	1	1	4	2	2	3	21
Official	0	0	3	1	0	1	3	0	4	1	1	1	15
Volunteer	4	7	1	3	1	4	3	4	4	6	4	7	48
Author	2	3	3	2	0	2	3	0	2	4	3	1	25
MMR	3	0	4	1	1	2	0	1	1	1	1	4	19
Golden Spike	18	3	6	2	3	3	10	3	6	3	6	13	76
Total	43	28	37	26	13	22	38	13	33	32	37	65	387

Above: This chart shows the number of Golden Spike Awards/Certificates of Achievement/MMR by Region in that order. The row that shows the past year's AP activity in the NER is highlighted. As you can see, the Region has been very active!

Left: This chart shows the breakdown of activity by the type of certificate.

The GSD has been very active in the AP Program over the past year as well. If you have any questions, or wish to get involved in the program, please contact me at: pres@nergds.com. WP

AT THE THROTTLE

**President and
Achievement Program Chair**
Bruce De Young
pres@nergdsd.com

Vice President and Clinic Chair
Jim Fawcett
vp@nergdsd.com

Treasurer and NER Director
Bob Dennis
treas@nergdsd.com

Secretary
Jim Walsh
sec@nergdsd.com

**Director and
Youth Program Chair**
Anthony Piccirillo
anthony13trains@gmail.com

**Director and
Public Relations Chair**
Andrew Brusgard
ajb1102@comcast.net

Director
Ciro Compagno
richmondharbor@gmail.com

**Director and
Membership Chair**
Tom Casey
members@nergdsd.com

Director and WP Editor
Jim Homoki
whistlepost@nergdsd.com

Director and Webmaster
Tom Wortmann
webmaster@nergdsd.com

Director
Mark Moritz
mwmoritz@optonline.net

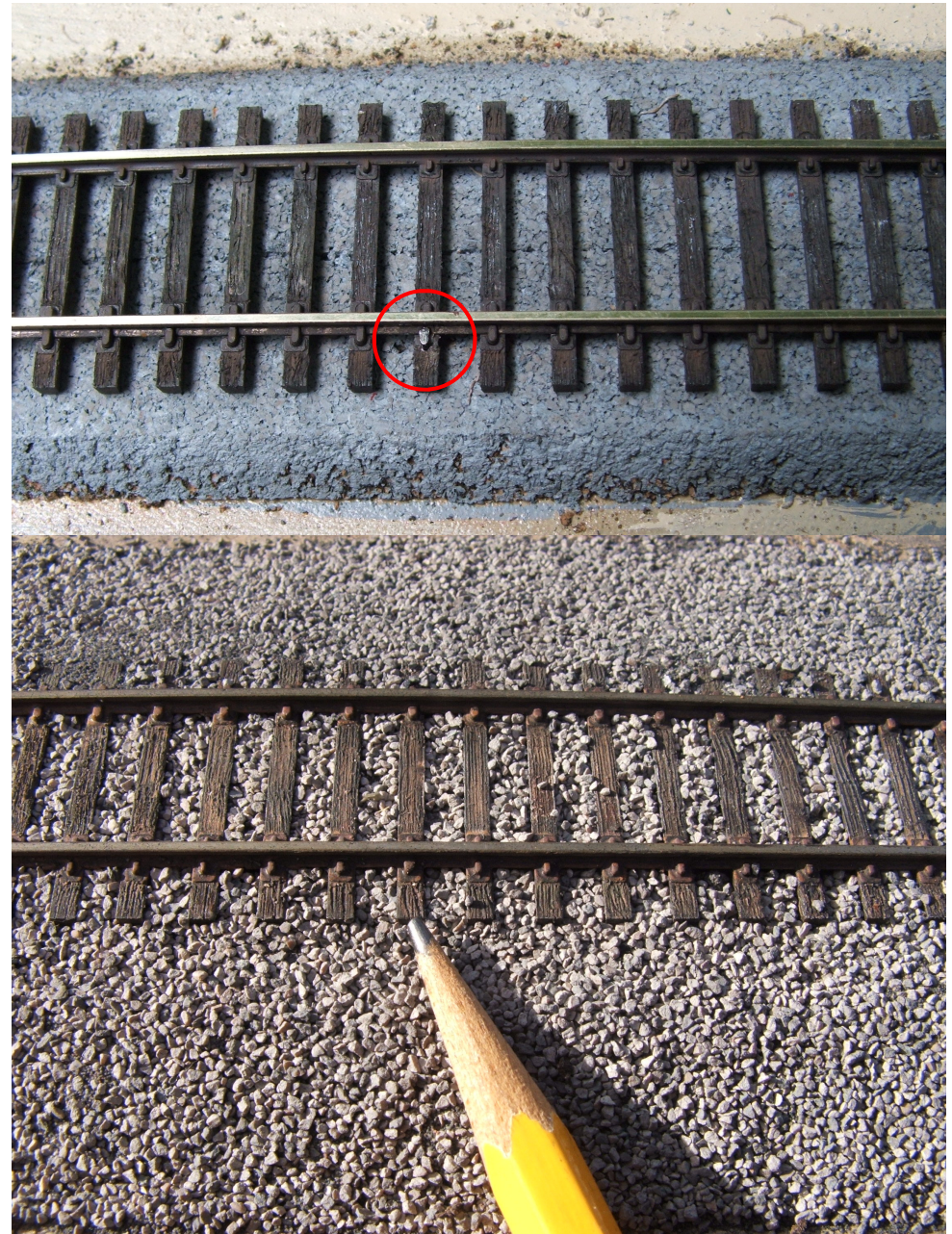
Semi-Handlaid Flextrack

Article and Photos by Jim Walsh

I did not want to fasten my track with an adhesive because I like to run on the track and make adjustments as necessary. Also, I may want to make changes after I begin running. Previously, I used code 100 track that was fastened with nails through holes in the ties. However, the new code 83 track looked good and I was reluctant to spoil the look with nails through the ties. Thinking about hand laid track, I determined that I could attach the track to the roadbed with spikes similar to hand laid. Since the flex track already integrates the ties and rails, I call the technique semi-handlaid flextrack. This method attaches the flex track with spikes and requires a spike that is long enough to drive through the tie and into the roadbed and a spike head that matches the molded detail on the flex track. For the Atlas code 83 flex track, I used Micro Engineering small spikes and trimmed the spike head to get the right shape.

The procedure is fairly simple although time consuming, but it results in an “invisible” mechanical connection of the flextrack to the roadbed.

1. Use a sharp blade (chisel type) to remove the cast detail on the track outside rails. Remove the “spike” detail but leave the plates.
2. Drill a through hole in the plate and tie. I located the spike against the rail similar to the detail that was removed in Step 1.
3. Push the spike down through the hole from Step 2 and position it against the rail. **WP**



ABOUT THE WHISTLE POST

Editor

Jim Homoki
whistlepost@nergds.com

Mailing Address

P.O. Box 43
Flagtown, NJ 08821

Technical Assistant

Chuck Diljak

Associate Editor

Bruce DeYoung

Division Photographer

Jim Walsh

Deadlines for submissions to the Whistle Post are January 10, April 10, July 10, and October 10.

COPYRIGHT:

© 2015 GARDEN STATE DIVISION

ALL RIGHTS RESERVED.

DISTRIBUTION OF THIS NEWSLETTER IS ENCOURAGED, BUT IT MAY NOT BE REPUBLISHED IN PART OR IN WHOLE WITHOUT WRITTEN PERMISSION FROM THE EDITOR.



The GSD now has a Twitter account! Announcements and updates can be made more quickly than on our website.

Follow the GSD at "GSD of the NMRA@GardenStateDiv"

Meeting Reports, past Articles, and complete issues of the Whistle Post can be found on the GSD website
www.nergds.com

Communications and Webmaster Help Wanted!

The GSD would like additional help with our electronic communications and website. Please contact
Bruce DeYoung:
pres@nergds.com



New Members Wanted!

No room for a home layout? Not sure you have the experience? We will teach.

The New York Society of Model Engineers is looking for new members. 5,000 square feet of model trains. Two large layouts, "HO" and "O". Full machine shop, large research library. Dues only \$15.00 a month. Located in Carlstadt, NJ, 1/2 mile from MetLife Stadium. See Membership page at www.ModelEngineers.org for details and directions.

Not getting the bi-monthly NMRA eBULLETIN?

The new **NMRA eBulletin** comes out every other month near the 1st of the month. Either your SPAM filter is blocking it, or you need to update your email address. Go to:

<http://www.nmra.org/nmra-magazine>

The Model Railroad Shop

290 Vail Avenue, Piscataway NJ 08854
Phone: 732-968-5696
Fax: 732-968-3314

Continuously operated since 1933

Daily 10AM - 6PM
Wed and Fri 10AM - 9PM
Sun Closed

www.themodelrailroadshop.com

THE BIG LITTLE RAILROAD SHOP

63 West Main Street, Somerville, NJ 08876

Hours: Tuesday-Friday 11:00 am-7:00 pm
Saturday 11:00 am-5:00 pm
Sunday 12:00 pm-4:00 pm

"NOT JUST TRAINS"

Slot Cars, Plastic Kits, Modeling & Diorama Supplies Too!

908.685.8892

www.biglittle.com

e-mail: jan@biglittle.com

The 3rd Annual Garden State RPM Meet!

(New name, same great meet!)

www.hansmanns.org/ld-op-nj/index.htm



When: November 14th and 15th, 2015

Where: Union County Vocational-Technical School, 1776 Raritan Road, Scotch Plains, NJ 07076

Admission: Pre-register \$15 (must be received by 11/1/15) \$20 at the door.

Features: Vendor Tables / Swap Meet/ Clinics/ RPM Meet Saturday, Layout Tours Sunday

Have a question for us? Please email to: TGSRPM@gmail.com
For vendor information, contact Jeff Sankus at: gsrpmvend@gmail.com

Please bring models and layout designs to display!

The most important part of any prototype meet is the model display.
Models in all stages of completion are welcome.

This is an NMRA Supported Event

Follow us on Facebook: <https://www.facebook.com/groups/574886465899076/>

Information provided will not be shared with outside groups or individuals

Name: _____ Email: _____

Address: _____ City: _____ State: _____ Zip: _____

Please mail payment and registration to Ted DiIorio, 28 Chimney Ct. Laurence Harbor NJ, 08879.
Or register quick and easy online via our PayPal link on the meet website!