

INSIDE

FALL EVENT	1
THE CAB AND THE CABOOSE	2
TIMETABLE	3
MORRISTOWN PHOTOS	4
AT THE THROTTLE	6
BUILDING FRED'S DRIVE-THRU	6
THE CLUB CAR	9
AP CORNER	9
MAP AND DIRECTIONS	10
LAYOUT TOURS	11
GSD INFO	14



WEBSITE

www.nergsd.com

Contact email addresses
can be found on Page 6 and
on the website.



The WHISTLE POST

The Official Publication of the Garden State Division of the NMRA Northeastern Region

The GSD returns to Hillsborough on October 1

After 1 1/2 years the GSD returns to the Hillsborough Township Municipal Building for our fall event. Hillsborough is in Somerset County with the Municipal Building located less than 15 minutes south of Somerville and the Route 202/206 circle. The address is 379 South Branch Road, off of Amwell Road and only a few minutes from Route 206. A Works in Progress format will be used to take advantage of the large meeting room at this facility. With this format several mini-clinics are run at the same time for a duration of not more than 30 minutes. After a short break, the presentations are repeated for several more cycles. Attendees can select the presentation they wish to attend each time.

As with most GSD events, sales tables and model judging will be available, but there will not be a Bring 'N Brag. Maps for nearby lunch spots and self guided tours to three home layouts in the afternoon will be available at the meet.

The complete lineup of Works In Progress presentations has not yet been finalized, but is expected to include the following: Tony Koester on Quick Weathering using Pan Pastels; Anthony Piccirillo on Decoders for Legacy Locomotives; Bruce De Young on Applying and Weathering Roofing Materials; Craig Bisgeier (not yet determined); and Jim Homoki on Working with Real Glass.

Photos and more information on the afternoon layouts can be found starting on Page 11. Maps to the layouts will be provided at the event. **WP**

Morristown Summer Event Wrap-Up

Approximately 50 GSD members and guests attended the summer event held at the Morristown Town Hall. Rudy Garbely gave a detailed presentation on the history of the Morristown and Erie Railroad, which is based about a half mile from our meeting location. Rudy also brought several models to display and offered his book on the M&E for sale. The website for viewing and purchasing books by Garbely Publishing is <http://www.garbelypublishing.com/>. A second presentation was on modeling roof details by Fred Dellaiacono

All three layouts that were open in the afternoon were well attended. These were Steve Kay's Lackawanna Terminal, Mark Moritz's 1920s layout under construction, and the Morris Plains Model Railroad Club.

A special arrangement was made with the URHS for a tour of the equipment and restoration work at their facility in Boonton. About 20 members took advantage of this opportunity. Frank Reilly was our guide with assistance from Larry Garb, Ray Klause, and Kevin Phalon.

The tour started with the restored New York Central observation car Hickory Creek. Two pieces undergoing restoration that were featured were the former DL&W MU Parlor Car and a former CNJ Budd RDC-1.

The URHS restoration facility will have its annual open house on Sunday, September 25. Their website is <http://urhs.org/>.

Photos from the summer event can be found starting on Page 4. **WP**



Fall Activities

The summer of 2016 is quickly slipping by and fall is just about to arrive. When I wrote my last installment of *The Cab*, I mentioned that Bonnie and I were about to head to the National Convention in Indianapolis. Well, we spent a week in Indy and what a great city it is! The sponsoring group did a great job organizing the Convention and providing attendees with an interesting array of Clinics, Layout Tours, Prototype Tours, and other activities. The week went by quickly.

One of my favorite activities while attending a convention (Regional or National) is getting to see new layouts. Even though I model in HO, I especially try to visit layouts in other scales, so it was not surprising that I ended up in the basement of Jeff Lang in the outskirts of Indianapolis to visit his large O-Scale layout. While watching trains run and taking many, many photos, I glimpsed this commemorative car from the New York Society of Model Engineers.

(Continued on the next page)



Operations

Of all the different ways one can “do” model railroading, operating your trains is perhaps the most varied as there is no right or wrong. Unlike prepping vs. not prepping a model for painting, which can drastically affect the outcome of the finished model, there may be as many variations in operating systems as there are operating layouts, and none of them are wrong. It only matters that the owner and his crew are happy with it.

I’m not nearly as well travelled as some of my friends, but I’ve still seen and run on quite a few layouts. Starting with the most simple systems, there would be no paperwork. Trains, which can be anything from a single RDC to a long freight to a single switcher and a few cars, head out and stop or switch where the engineer wants to switch. There doesn’t even have to be a mainline, such as on an operating diorama. Advancing just a little, dice or cards may be used to determine how many cars to switch. Many years ago before I started formal operating sessions, a visiting friend took the throttle and started “operating” by sorting freight cars by color!

I assume most of us have at least heard of four sided waybills, and there are many variations on this. On my layout I make my own cards based on this popular system. Then there are waybills that get checked off, sliding tabs, and any number of custom printed waybills that provide direction on what should be done with a car. Some contain much of the information found on prototype waybills.

Assuming we have a layout and not a switching diorama, there are just as many ways to dispatch trains for running on the layout. In all cases someone, often the owner, needs to be in control as the dispatcher or crew caller. Instruction sheets are often made available to provide guidance to the crew on what their train should do. The actual communication is often verbal and face to face (to minimize yelling across the room). From there, you can find radios (usually FRS types), telephones, written orders, and many combinations of signaling, written orders, and verbal orders used to start, control, and terminate trains. Some of these systems are very prototypical.

I offer a few observations on all of this. First, scenery and structures are optional. They have nothing to do with the process of running trains. Second, some people swear by certain systems and dislike others, but for every one of them you can find someone that thinks just the opposite. And last, if you’re thinking about starting your own operations and are not yet set with a system to do it, try to visit as many layouts as you can and ask questions, or operate on them if possible. **WP**

The Timetable *Upcoming Events*

NJ Division September Event Saturday 17th, M. Joan Pearson Elementary School, Delanco, NJ Details on the NJD website <http://www.njdivnmra.org/>

GSD Fall Event Saturday October 1 at Hillsborough Twp. Municipal Building in Hillsborough, NJ. A "Works in Progress" format will be featured. Details are in this issue of the WP.

Great Scale Model Train Show, aka "Timonium" at the Maryland State Fairgrounds, 2200 York Road, Timonium, MD. October 15-16. www.gsmts.com

MER 2016 Convention "Tracks to the Triangle" October 20-23 at the Marriott Research Triangle Park, Durham, NC <http://www.mer2016.org/>

New York Society of Model Engineers/METCA Swap Meet All types of trains, all scales, building and scenery materials, and more! Saturday, October 26, 2016 9:00 AM-2:00 PM St. Joseph's Auditorium, 120 Hoboken Road, East Rutherford, NJ 07073 Admission \$5.00 Tables available \$20 each, call 201-939-9212 or email contact@ModelEngineers.org

Garden State RPM Meet November 5 at the Union County Vocational-Technical School in Scotch Plains. If you haven't been to an RPM meet, this local event is a great one to start with. Clinics, model displays, layout open houses, and vendor tables. Registration and information available at <http://hansmanns.org/ld-op-nj/index.htm> This is a NMRA supported event.

November Model Railroad Open House NJ/PA/DE/MD An annual event where dozens of layout owners and clubs open their doors to the public. <http://modelrailroadopenhouse.com/>

Greenberg's Train and Toy Show November 26-27 New Jersey Expo Center, Edison, NJ www.GreenbergShows.com

Amherst Railway Society "West Springfield" MA show January 28-29, 2017. The largest on the east coast. www.railroadhobbyshow.com

GSD Winter Event February 2017. Date and details to be announced.

NE Railroad Prototype Modelers Meet June 2017 at the Holiday Inn, 1 Bright Meadow Blvd., Enfield, CT. <http://www.neprototypemeet.com/Welcome.html>

NMRA 2017 National Convention "Orange Blossom Special" Orlando, FL July 30-August 6, 2017. <http://nmra2017orlando.org/>

NMRA 2018 National Convention to be held in Kansas City
Fall 2016

(The Cab continued from the previous page)

As you might know, one of our GSD Directors, Andy Brusgard is a member of NYSME, so I mentioned that to our host, Jeff Lang. With a big smile on his face, he said "Oh, I know Andy!" What a small world we live in. Then again, I have mentioned Andy's name to O-Scalers across our great country, and it is rare to find one that does not know Andy! (BTW, mention my name to an HO modeler anywhere in the USA and you will likely get a blank stare and/or a "Bruce who?")

September and October will see Bonnie and me heading to a few more conventions – and another pair of state capitol cities. We will be heading to Augusta, Maine from September 7-10 to attend the 36th National Narrow Gauge Convention. While there, I will be giving a clinic on the "Logging Railroads of Pennsylvania". Although the NNGC is not an NMRA event, it is co-sponsored by the NER's Seacoast Division and will be well attended by NMRA members. I am looking forward to visiting the famous Maine "two footers".

We no sooner get back from Maine and we will be heading to Albany, NY and the NER Convention – The Pacemaker. There we hope to nail down the final approval for our sponsorship of the 2018 NER Convention with our neighboring Hudson Valley Division.

October will kick off with our GSD Fall Event at the Hillsborough Township Municipal Building in Hillsborough, NJ on Saturday, October 1st. This event will feature 'Works in Progress' clinics plus our usual agenda including afternoon layout visits. Look elsewhere in this issue of the Whistle Post for more information on our fall event.

Finally, early October will see us combining a visit to our son in Michigan and my attending the North Central Region Convention in Livonia, Michigan. While there, I will give my EduTRAIN™ Clinic titled "Weather or Not".

As I have mentioned before, Regional Conventions are real gems. You get to experience many of the same things you would if you were to attend the National Convention, at a fraction of the cost. Have you attended a Regional Convention yet? If not, give it a try. Remember, we will be hosting the 2018 NER Regional Convention (The Erie Limited) right here in northern New Jersey! **WP**



PHOTOS FROM THE MORRISTOWN EVENT

Photos by Jim Walsh



Above: Several models were on display including a structures entry by Steve Ascolese that won Third Place at the NMRA National Convention in Indianapolis.

Below: Fred Dellaiacono presented a clinic on rooftop details on structures and is shown here promoting the Boxcar Challenge contest.



NEXT DIVISION EVENT

TIME:

9:00 AM TO 12:00 PM

LAYOUTS 1:00 PM TO 4:00 PM

DATE:

SATURDAY, OCTOBER 1

LOCATION:

HILLSBOROUGH TOWNSHIP

MUNICIPAL BUILDING

379 SOUTH BRANCH ROAD

HILLSBOROUGH, NJ 08844

EVENT FEE: \$5

WEBSITE FOR MEETS:

SEE PAGE 6 AND

[HTTP://WWW.NERGSD.COM/](http://www.nergsd.com/upcoming.html)

[UPCOMING.HTML](http://www.nergsd.com/upcoming.html)

AGENDA:

REFRESHMENTS

WORKS IN PROGRESS CLINICS

WHITE ELEPHANT TABLES

DOOR PRIZES

MODEL JUDGING

OPEN HOUSE LAYOUT TOURS

(continued from previous page)

Below: Craig Bisgeier explains the modifications he made in the construction of a model during the Bring 'N Brag segment of the event.



Below: Chris Oliva describes the N scale MU passenger cars that he built from kits.



AT THE THROTTLE

President and
Achievement Program Chair
Bruce De Young
pres@nergdsd.com

Immediate Past President
Ciro Compagno
richmondharbor@gmail.com

Vice President and Clinic Chair
Jim Fawcett
vp@nergdsd.com

Treasurer and NER Director
Bob Dennis
treas@nergdsd.com

Secretary
Jim Walsh
sec@nergdsd.com

Director & Youth Coordinator
Anthony Piccirillo
anthony13trains@gmail.com

Director and
Public Relations Chair
Andrew Brusgard
ajb1102@comcast.net

Director and Membership Chair
Tom Casey
members@nergdsd.com

Director and WP Editor
Jim Homoki
whistlepost@nergdsd.com

Director and Webmaster
Tom Wortmann
webmaster@nergdsd.com

Director
Mark Moritz
mwmoritz@optonline.net

Director
Chuck Diljak
nmra_chuck@yahoo.com

Director
Fred Dellaiacono
ramapo41@gmail.com

Part 1: Building **FRED'S** Drive-Thru Beverages

By Chuck Diljak

Photos and Artwork by the Author


What a great idea. For 2 bucks, you get a 50 foot HO scale boxcar shell, either in plug-door or sliding door versions, and have the opportunity to build something for Fred's Boxcar Challenge. Anything. As long as it contains 80% of the boxcar shell. So, I thought long and hard for about 15 minutes and decided that I didn't want to build a boxcar to run on the layout. I don't have many cars over 40 feet in length. I also didn't think that would be as much fun as building a structure from the boxcar shell. But, what?

At the end of those 15 minutes, I remembered one of those interesting things from my early years of living in Pennsylvania: Driving into a beer distributor to pick up a case or keg of beer. You drive in, place your order, pay for the goods, pop the trunk and an employee places whatever you ordered into the trunk. All without leaving the confines of your car.


This article documents the steps I took to build "Fred's Drive-Thru Beverages" for the challenge. It consists of two main parts: The boxcar, used for storing the cases and kegs of beer picked up by customers as they "drive-thru" the boxcar doors, and the office.

So, the obvious place to start is with modifying the boxcar so that you CAN drive through it! I chose the plug-door version of the model, since I was thinking the car could be more insulated and sealed better. When I looked at the cast in doors, there are seams along the edges of the door that you can use for guiding your hobby knife. The shells are pretty thick, so go slowly and let the knife do the work. It took many, many passes through the thick shell to finally get both vertical cuts made. Unfortunately, the door track and rail at the bottom of the door snapped during the process. I scored along the top of the door several times after removing the small pieces of the door guidance system that butt against the top rail. Then, I was able to carefully snap the door out of the opening. I also scored along the bottom rail and snapped this piece off of the door. Later, I added .060 x .060 styrene strips as a replacement for the bottom rail, painted MicroLux Grimy Black.

FRED'S GSD Boxcar Challenge



Hmmm. What
could I
make
with this?



- Model, Diorama, Prototypical, or Whimsical
- Use minimum 80% of boxcar shell
- Shells available at summer and fall GSD events
- Only \$2 per shell
- All proceeds used for cash prizes
- Complete models for winter 2017 event
- Winners chosen by popular vote

(Continued on the following page)

(Continued from previous page)

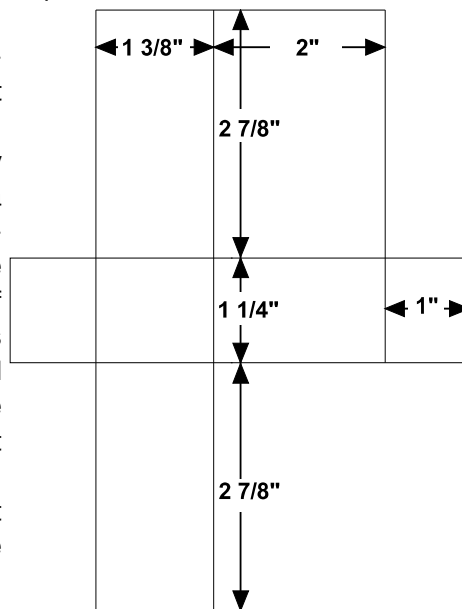
The hardest part of the project is done. Clean up of the doors and entryways are the next steps, using sanding paper and files. I noticed the doors get thicker as you travel from the base to its top, which will make the model look funny when they are installed. Using a disk sander, I thinned the doors so that they had a consistent thickness. And, since the doors will be in the open position, I removed the vertical rows of rivets that will be hidden behind the doors using a chisel blade and fine sandpaper. This will provide a smooth surface to glue the doors to.

To complete the preparation work on the boxcar shell, I glued pieces of .188 x .020 strip styrene to the underside of the roof where the mounting holes for the roof walk are. I filled those holes with modelers putty and sanded it smooth. Later, I discovered that roof walks were provided with the boxcar, but by then it was too late. I plan to use roof walk components I have in my scrap box, instead. In addition to plugging the roof walk holes, I also removed the stirrup steps and sanded the corners smooth using my disk sander.

After washing the shell, I airbrushed it with an acrylic primer followed by Micro-Lux Reefer White. To prepare the model for decals, I applied a light overspray of Glosscote. I created my own artwork, reproduced here, for the various beer labels I wanted advertised on the side.

Normally, I would have printed the decals on decal paper designed for inkjet printers and sealed them with Glosscote. But, since I didn't have any decal paper readily available, I asked a friend to print them on his Alps printer. After applying the decals, I gave the boxcar sides another shot of Glosscote. I've found that the decals blend better after applying the second coat. The ends and the roof of the shell were painted PollyScale Depot Green. Normally, I would have painted the roof and ends before decaling, but this was a decision I made later in the project. The green will be used for trim on the office building in Part 2 of this article.

(Continued on the following page)



Above: Foundation and ramp dimensions used for the drive-thru beer distributor.

Below: Chuck created artwork for several of his favorite brands of beer. These can be printed and used to build your own boxcar beer distributor or for many other projects. They are sized at approximately twice that used in this project, but can be reduced to any size on an office copy machine. Chuck had a friend print his decals on an Alps printer, though they were created with a clear background, not white. A white background requires creating a mask just for the area to be printed in white. Other printers can be also be used as the white background shows through the decal where white would have been printed.



(Continued from previous page)

The foundation was made from molds I made. The molds were made from a strip of Chooch cut stone wall. I then cast enough for the foundation for the model. Instead of using a stone foundation, you could use styrene strips to represent a concrete foundation. I cut a base for the foundation stones using the dimensions shown in the drawing and .010 styrene sheet. Using ACC, I glued the stone strips to the styrene and then painted the assembly with MicroLux Aged Concrete. Then, the individual stones were painted random colors of brown and gray. I finished the stones by lightly dabbing them with the brown and gray colors using sponges that have a very small cell structure, such as packing material found in boxes your locomotives come in.

To provide additional support for the flooring, I added some styrene strips. The strips are a sandwich of various thicknesses that when combined, equal the height of the stone foundation. I also cut from .010 styrene a piece that measures 50'-5" x 9'-3", which will fit inside the boxcar and support the flooring that will be added later. This was centered and glued to the top of the stone foundation. The floor was painted with MicroLux Engine Black.

The final step was to add the decking. The decking is 2 x10 wood strips, stained with a mixture of Pollyscales paints, India ink, and alcohol. I added the decking to the foundation as well as to part of the interior of the boxcar. I didn't add it to the entire interior, however. Just enough was added to satisfy my sight lines.

In Part 2, I will cover the construction of the office and adding all the details to make this model come alive. I hope this little project generates excitement for yourself, and that you will participate in Fred's Boxcar Challenge. It really is a lot of fun to allow yourself to be creative. So, make sure you pick up a shell at the fall meet in Hillsborough! **WP**



Above and Below: Completed views of the boxcar storage structure. A variety of materials along with homemade artwork were used to construct it. Chuck is hoping to inspire others to create an entry for Fred's Boxcar Challenge that will be held at the GSD Winter Event.



THE CLUB CAR

Garden State Model
Railway Club
575 High Mountain Road
North Haledon, NJ 07508
www.gsmrrclub.org

The Model Railroad Club
295 Jefferson Avenue
Union, NJ 07083
<http://tmrci.org>

New York Society of Model
Engineers
341 Hoboken Road
Carlstadt, NJ 07072
www.modelengineers.org

Pacific Southern Railway Club
26 Washington Street
Rocky Hill, NJ 08553
www.pacificsouthern.org

Ramapo Valley Railroad Club
620 Cliff Street
Ho-Ho-Kus, NJ 07423
www.ramapovalleyrailroad.com

Bound Brook Presbyterian
Railroad Club (BBPRR)
Bound Brook Cemetery
Office Building
500 Mountain Avenue,
Bound Brook, NJ 08805
Riley1644@verizon.net

Staten Island Society of
Model Railroaders
Train Club Room, 3rd Floor
Staff House, Seaview Hospital
460 Brielle Avenue
Staten Island, NY
[http://sismrinc.tripod.com/
index.html](http://sismrinc.tripod.com/index.html)

AP Corner *By Bruce De Young, MMR - Achievement Program Chair*

At our Summer Event in Morristown, two of our members received certificates they earned through their involvement in the Achievement Program.

Director Chuck Diljak received four Merit Awards for structures that he built and had evaluated as he works towards his Structures Certificate.

Director Tom Wortmann received his Civil Engineering Certificate. Among other requirements, Tom hand laid (scratch built) a turnout, a crossover, and a Gauntlet Track to earn this certificate.



Above Left: Tom Wortmann receives his Civil Engineering Certificate from Past-President Ciro Compagno. (photo by Jim Walsh)



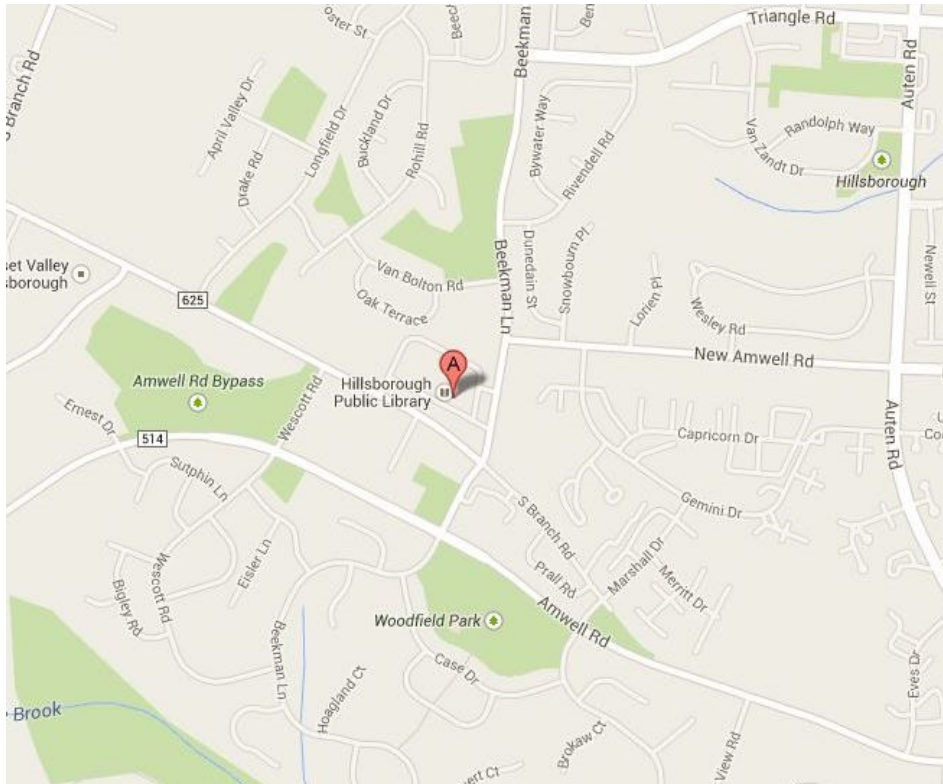
Above Right: Chuck Diljak received several merit awards for structures he has had evaluated. (photo by Jim Walsh)

There have been a couple of other GSD members active in the program in the interim, and we will hopefully have their certificates ready to be presented to them at our fall event in Hillsborough, NJ on October 1st.

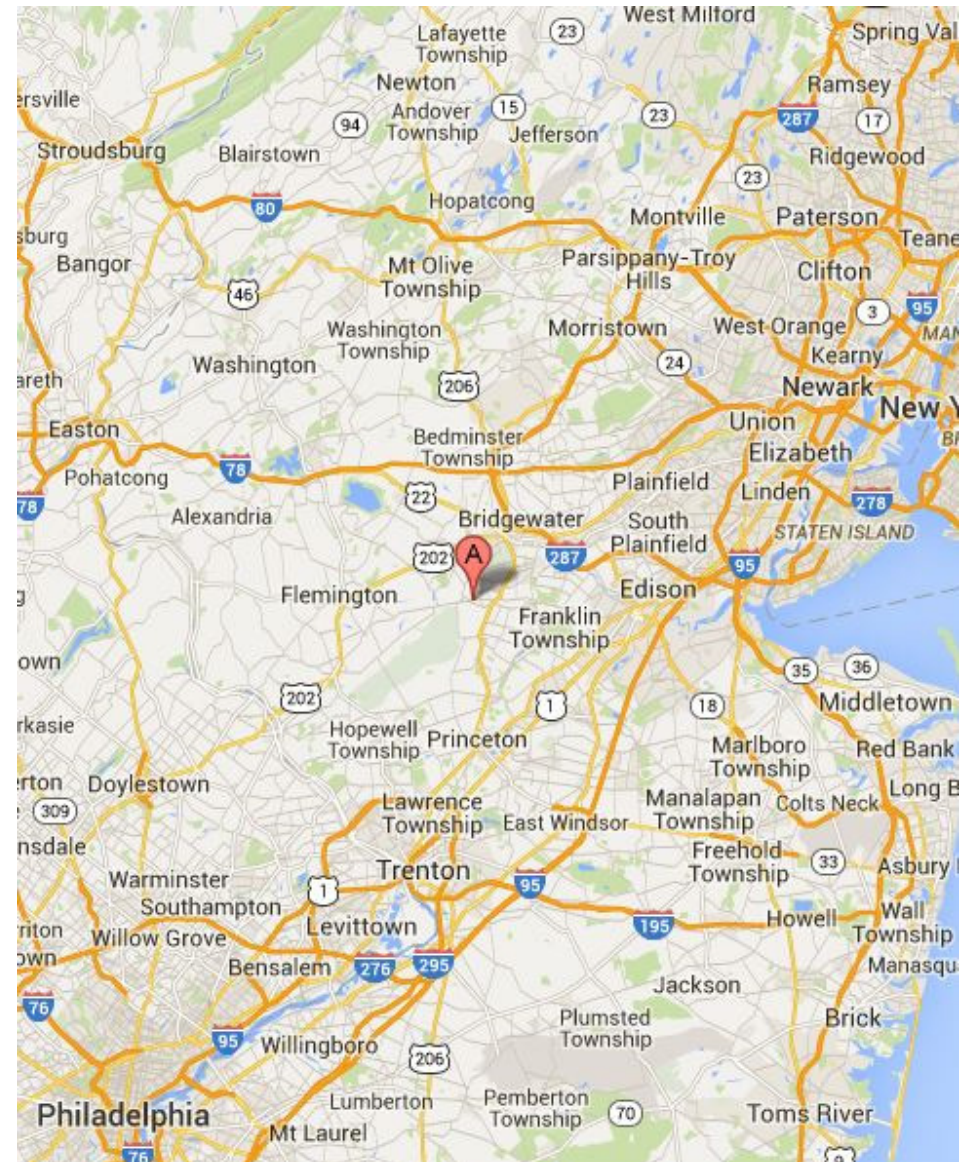
Another of our members, Steve Ascolese, entered three of his structures in the contest at the National Convention. All three earned Merit Awards. In addition, he also earned 3rd Place in Kit Built Structures for his Maschio Bros Woodworking. Steve models in N-Scale and his modeling is top notch. Congratulations, Steve! **WP**

From the north and east the best route takes you through the Somerville Circle, then Route 206 south to Amwell Road. From the south and west, back roads will be faster to Amwell Road than staying on a major highway. Be aware your GPS directions may not be the fastest way to the meet as it tends to keep you on the major highways.

- Reach Route 206 from the Somerville Circle (Routes 202/206/28), or back roads from I-287 through Franklin, or Route 206 from Route 1 and Princeton.
- If on Route 206, take Amwell Road west.
- Turn right on Beekman Lane at traffic signal
- Turn left on South Branch Road at traffic signal.
- The Hillsborough Municipal Building is on the corner. The library and Police are located in the same building. Turn right into the driveway and drive to the back of the building. There is an entrance adjacent to the meeting room.



MAP AND DIRECTIONS FOR THE FALL EVENT



LAYOUT SELF GUIDED TOURS

For the Fall Event there will be three home layouts and possibly one club layout open for self guided tours. Driving and parking directions will be provided at the event.

Ron Klaiss will be opening up for his first NMRA layout tour in October.

He models the Mine Mount & Seaside RR in HO/HOn3. It is a freelance railroad running from the Appalachian mountains to the sea shore. It is roughly set in the early 1940s and occupies a space of 14'x15' with a 3'x20' area that contains the staging/loop tracks. About 2/3 is standard gauge track and the rest is narrow gauge. It is a deck and a half with the standard gauge occupying most of the bottom deck. There is a transfer yard between the two gauges.

Control is by NCE Powerhouse Pro wireless. All visible track is hand laid Code 70 rail with hand built turnouts using Fast Tracks jigs or printouts, and any hidden track is Micro Engineering Code 70 flex. All of the bench work is in place, with 95% of the track installed (minus a few spurs that are waiting for the industry size to be finalized). Scenery is underway with about 10% complete.

Ron also maintains a Facebook page, and a YouTube channel link at <https://m.youtube.com/user/myowngod2>



Above: Ron looks over a completed gorge and trestle scene on his layout.

Left: A Lighter freight kit by Seaport Model Works will be incorporated into the final harbor scene.

(Continued on the following page)

(Layouts continued from previous page)

Joe Calderone's HO scale Delaware and Hudson will be open again after an absence of several years. Joe models the D&H in the mid-1970s in New York State. Digitrax DCC is used for control and he regularly holds operating sessions. (Photos by Joe Calderone)

Right: There is a lot of activity at the Sydney passenger station. Local industries also generate freight traffic in this area.



Left: One of the last open sections on Joe's layout has been filled up with this quarry, material storage, and loadout facility scene.



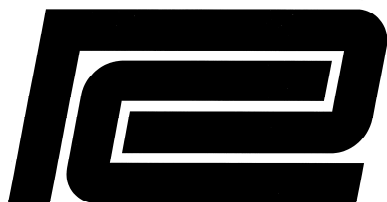
(Layouts continued from previous page)



NEWARK
NT
TERMINAL
YOUR INDUSTRIAL CONNECTION

Jim Homoki's HO scale Newark Terminal features Penn Central and CNJ equipment and operations in the 1969-1974 era. Interchange takes place between the two railroads in the Newark area. Many locomotives are sound equipped, with control by Digitrax. Additional structures, scenery, and equipment have been added since the last open house. (Photos by Jim Homoki)

Above: A CNJ switcher trundles past industries on the Jersey City section of Jim's layout.



Right: A Penn Central freight leans into the curve as it drifts downgrade on the double track PC mainline. It was not uncommon to see large water bottles on the short hood of locomotives in this era. The bottle was made by turning down a scrap piece of clear plastic sprue.



ABOUT THE WHISTLE POST

Editor

Jim Homoki
whistlepost@nergds.com

Mailing Address

P.O. Box 43
Flagtown, NJ 08821

Technical Assistant

Chuck Diljak

Associate Editor

Bruce De Young

Division Photographer

Jim Walsh

Deadlines for submissions to the Whistle Post are four weeks prior to the next event, as announced in the prior Whistle Post.

COPYRIGHT:

© 2016 GARDEN STATE DIVISION

ALL RIGHTS RESERVED.

DISTRIBUTION OF THIS NEWSLETTER IS ENCOURAGED, BUT IT MAY NOT BE REPUBLISHED IN PART OR IN WHOLE WITHOUT WRITTEN PERMISSION FROM THE EDITOR.



The GSD now has a Twitter account and a Facebook page.

Follow the GSD at "GSD of the NMRA@GardenStateDiv"

Meeting Reports, past Articles, and complete issues of the Whistle Post can be found on the GSD website
www.nergds.com

Communications and Webmaster Help Wanted!

The GSD would like additional help with our electronic communications and website. Please contact
Bruce De Young:
pres@nergds.com

New York Society of Model Engineers/METCA Swap Meet
All types of trains, all scales, building and scenery materials, and more!
Saturday, October 29, 2016 9:00 AM-2:00 PM
St. Joseph's Auditorium, 120 Hoboken Road, East Rutherford, NJ 07073
Admission \$5.00 Tables available, email contact@ModelEngineers.org



Not getting the bi-monthly NMRA eBULLETIN?

The new **NMRA eBulletin** comes out every other month near the 1st of the month. Either your SPAM filter is blocking it, or you need to update your email address. Go to:

<http://www.nmra.org/nmra-magazine>

The Model Railroad Shop

290 Vail Avenue, Piscataway NJ 08854
Phone: 732-968-5696
Fax: 732-968-3314

Continuously operated since 1933

Daily 10AM - 6PM
Wed and Fri 10AM - 9PM
Sun Closed

www.themodelrailroadshop.com

THE BIG LITTLE RAILROAD SHOP

63 West Main Street, Somerville, NJ 08876

Hours: Tuesday-Friday 11:00 am-7:00 pm

Saturday 11:00 am-5:00 pm

Sunday 12:00 pm-4:00 pm

"NOT JUST TRAINS"

Slot Cars, Plastic Kits, Modeling & Diorama Supplies Too!

908.685.8892

www.biglittle.com

e-mail: jan@biglittle.com