

INSIDE

<u>SPRING JOINT EVENT</u>	<u>1</u>
<u>THE CAB AND THE CABOOSE</u>	<u>2</u>
<u>WINTER MEET WRAP-UP</u>	<u>3</u>
<u>TIMETABLE</u>	<u>5</u>
<u>CONSTITUTION CHANGES</u>	<u>5</u>
<u>AP CORNER</u>	<u>6</u>
<u>AT THE THROTTLE</u>	<u>7</u>
<u>GSD ON YOUTUBE</u>	<u>9</u>
<u>MAPS AND DIRECTIONS</u>	<u>10</u>
<u>LOOKING FOR NEW VENUES</u>	<u>10</u>
<u>LAYOUT TOURS</u>	<u>11</u>
<u>GSD INFO</u>	<u>15</u>



WEBSITE

www.nergsd.com

Contact email addresses
can be found on Page 7 and
on the website.



The WHISTLE POST

The Official Publication of the Garden State Division of the NMRA Northeastern Region

Spring Joint Event with NJD Scheduled for May 14

The GSD will again hold a joint Spring event with the New Jersey Division. It will be held at the InfoAge Museum at the old Camp Evans base in Wall Township, Monmouth County, which is also the new home of the Garden State Central Model Railroad Club. The start time is 9:00 AM. There is plenty of parking on site, and as usual, there will be refreshments available. There is a nominal activity fee for members that have not paid the annual NJD event fee.

The program will feature two clinics. One will be by the GSD's own Chuck Diljak entitled My Big Fat Clinic (or, How to Weigh Cars Like the Prototype), and the other by Tom Griffiths, MMR, on Urban Modeling in a Limited Space.

Chuck already built a crossover and a turnout, but what third track element could he build to qualify for the Civil Engineer certificate and also find a place on his layout? He discovered that a scale track was just the thing he needed for his coal based railroad. Chuck's clinic will discuss how he built his scale track, the accompanying scale house, and how he incorporated it into his operations.

Tom will show his techniques and provide examples of how he developed several urban scenes, such as in the photo to the right.

Additional activities include a model contest for detailed and weathered milk cars, White Elephant sales tables, and door prizes. The GSD will also hold their annual business meeting and elections.



Tom Griffiths, MMR, will present a clinic on urban modeling. The above photo is an example of how many different elements can be combined into a fine urban scene.

In the afternoon there are currently ten (!) local layouts scheduled to be open for self guided tours, in addition to the Garden State Central (<http://gardenstatecentral.com>) located at the museum. Photos and descriptions of the layouts can be found starting on Page 11. Maps will be provided at the event. **WP**



Prime Modeling Season—Almost

I don't know about you, but the period from January through mid-April is normally my most productive modeling time. Without the distractions that outdoor activities and summer travel bring, those few post-Holiday months usually see me in the basement attacking my modeling 'to-do' list. This year, not so much.

I did head for the layout in January, and it was a classic example of one step backwards before taking one step ahead. I have tackled the development of my HO scale Jersey Highlands Railroad in segments. After building much of the bench work, I first tackled the main yard area. Next, I addressed the area along the backdrop, developing what I called my 'Quarry Branch', with a slate quarry at one end and a crushed stone quarry at the other. This winter I was ready to attack a large peninsula in front of that Quarry Branch.

I liked my track arrangement, but the track was laid on the bare plywood. So I had to carefully label and remove all the track, along with the power feeds, in order to put down my cork roadbed. Once the cork was down, I sanded it and gave it two coats of paint to seal it from the humidity in my basement. Finally all the track was re-laid and the power drops re-connected. (Hence the one step back/one step ahead.) After a few weeks of work, I had the peninsula ready for structures, scenery, and ballasting. For those interested, I posted a video on YouTube showing how I lay down my cork roadbed. You can see it at this link: <https://www.youtube.com/watch?v=QCJW6jgGOQI>

It was at that point in February that we decided to try our hand as 'snow birds' and headed south for a while. I did, however, bring a project on the road with us. Throwing a bunch of unpainted HO scale figures in a plastic tote box along with assorted paints, paint brushes and clip on magnifying glasses, I was ready to paint little people in our 'down time'. By the time we returned home in mid-March, I had 70 nicely painted figures to use when I finally get back to the scenery work on the peninsula. Some tips on my figure painting techniques can be found in this YouTube video: <https://www.youtube.com/watch?v=xvZDgBZ0Y-k>

My goal is to have that peninsula done by the time the Garden State Division hosts the 2018 NER Convention. I think that I'm going to have to re-define my 'Prime Modeling Season' to achieve that goal.

Hopefully, you have all had some time to do some modeling, too. By the way, if you have a layout, we would like you to consider opening it up for visitors, too - either for the 2018 Convention, or for one of our Division Meets. Contact any member of the Board of Directors if you are interested.

That is all for now. I hear those little people that I painted complaining about being trapped in a plastic box. They want to get onto the layout, so I better head downstairs! **WP**



Open Houses

The upcoming event at the InfoAge Museum on May 14 has 10 home layouts and one club layout open, which is the most I can recall for a Division event. Not surprisingly, most are HO. Are there not any N Scalpers with a layout in this area? How about O?

The types of layouts open for any event is first based on location, then other factors such as the hosts' availability and the frequency of past openings. Some layouts are regularly open, while others only occasionally. The Division is always looking for new layouts to include. For the Morristown meet in August the GSD has potentially three never before open layouts that may be "on the tour". Hopefully it will work out; details will be in the Summer WhistlePost.

I encourage you to take advantage of the hospitality and effort the hosts put into opening up by visiting as many as you can. There is always something to learn no matter what the scale. As is typical, the layouts in May are in various states of completion and use different control systems. Some are prototype and era specific, while others are more general in what they represent. If starting or expanding a layout, this is a great time to ask the owner questions about how and why he did the things he did. There is no right or wrong way, but after observing how other people do things you'll be able to make your own decisions on how to proceed with your own layout. Even for an existing layout, you may pick up an idea, or see how something you were thinking of doing actually looks and functions once in place.

Clubs aside, opening up a home layout is not difficult, but it can be a bit stressful. There are a lot of little things to do and remember. Cleaning up the entire area and checking equipment, cleaning track, and fixing that turnout you're been meaning to get to is a good start. Can a train or two be run in a loop or should a friend that knows the layout be asked to help provide some action? (Hint: don't try to entertain guests and operate trains at the same time). Is there time to put together a handout describing the layout, perhaps with design concepts and a track plan? What if the weather is rainy, or worse? Do I want to offer any snacks and drinks? What did I do with that lawn sign or crossbuck that is supposed to identify the house? Providing a sign in sheet or log book is also a good idea.

As a visitor, none of the above is your problem, but I guarantee the owner will appreciate a compliment where the effort has been made to make your visit worthwhile. I know I won't be able to get to all the layouts open on May 14, but I do intend to visit as many as possible. **WP**

WINTER MEET WRAP-UP

by Bruce De Young, MMR

In a winter that featured few snow storms, we still had to go with our snow date for our winter meet when the largest storm of the year hit on our original date. Even so, we had a good turnout on our back-up date with close to fifty members meeting in the John Y. Dater Elementary School in Ramsey on Saturday, February 6th.

The morning featured three clinics presented by Fred Dellaiacono, Tom Wortmann, and Bruce De Young. The topics included making background flats out of cardstock, rock walls out of Styrofoam, and tips on tackling the Civil Engineering requirement of the Achievement Program. We also presented Dr. Mark Moritz with the 2015 Mallery Award, and both Bob Dennis and Tom Wortmann the Merit Awards that some of their structure models earned. As always, we also had a good sampling of models in the 'Bring and Brag' segment of the meeting. It was nice to see models features in N Scale, HO Scale, and O Scale this time around.

Below: Dr. Mark Moritz (left) receiving the 2015 Paul Mallery Award from President Bruce De Young. (photo by Jim Walsh)



One of the nice things about our meeting location was that it was within walking distance of Ramsey's Main Street and all of its eateries. A large group walked to the Tracksid Inn for lunch. It is located adjacent to the old Erie Main Line, now used by New Jersey Transit, often with Metro North equipment, and Norfolk Southern.

In the afternoon, three club layouts, a museum layout, plus Fred Dellaiacono's HO Scale layout were open for the layout tour. We even had a layout open at a train store on Route 17 in Mahwah.

We saw several new faces at this event and even signed up a few new members. Overall, we had another successful meet. Elsewhere in this issue you will see some information about our upcoming meets. Plus, you can always check our website that has information on the rest of the meets for the year. If you can, please attend – and bring a model along for the Bring & Brag Session!

(Additional event photos on the following page) WP



Above: Fred Dellaiacono presenting his clinic on making inexpensive background structures. (photo by Jim Walsh)

NEXT DIVISION EVENT

TIME:

9:00 AM START

DATE:

SATURDAY, MAY 14

LOCATION:

INFOAGE MUSEUM
2201 MARCONI ROAD
WALL, NJ 07719

[HTTP://INFOAGE.ORG/](http://infoage.org/)

EVENT FEE: \$5

WEBSITE FOR MEETS:

SEE PAGE 5 AND

[HTTP://WWW.NERGSD.COM/
UPCOMING.HTML](http://www.nergsd.com/upcoming.html)

AGENDA:

REFERESHMENTS

TWO CLINICS

GSD BUSINESS MEETING

WHITE ELEPHANT TABLES

MODEL POPULAR VOTE

DOOR PRIZES

OPEN HOUSE LAYOUT TOURS

(continued from previous page)

Right: A busy urban scene
on the Ramapo Valley Club
layout in Ho-Ho-Kus.
(Jim Walsh Photo)



Left: Chris Oliva explaining how he made his N Scale
light fixtures as part of the Bring & Brag session. Chris
has been doing some really creative modelling of
exterior lighting, presenting a variety of equipment.
(Jim Walsh Photo)

The Timetable *Upcoming Events*

GSD Spring Joint Event with the NJD Saturday May 14 in Wall, NJ. See details in this issue.

Great Scale Model Train Show, aka "Timonium" The Spring edition of this show will be held April 23-24 at the Maryland State Fairgrounds, 2200 York Road, Timonium, MD. Future show dates are July 9-10 and October 15-16. www.gsmts.com

MFMR/NER Convention "Port City Rails", St. John, NB, Canada May 19-22
http://pcr2016.weebly.com/store/c1/Featured_Products.html

NE Railroad Prototype Modelers Meet June 3-4, 2016 at the Holiday Inn, 1 Bright Meadow Blvd., Enfield, CT. <http://www.neprototypemeet.com/Welcome.html>

GSD Summer Event Saturday August 6 at Morristown Town Hall in Morristown, NJ. This will be a new location for the GSD.

NMRA 2016 National Convention "Highball to Indy" Indianapolis, IN July 3-10
<http://www.nmra2016.org/>

Greenberg's Train and Toy Show August 13-14, New Jersey Expo Center, Edison, NJ www.GreenbergShows.com

NER 2016 Convention "The Pacemaker" September 15-18 at the Desmond Hotel and Convention Center in Albany, NY. <http://www.hbdpacemaker.org/>

GSD Fall Event Saturday October 1 at Hillsborough Twp. Municipal Building in Hillsborough, NJ. This will be a joint event with the New Jersey Division.

MER 2016 Convention "Tracks to the Triangle" October 20-23 at the Marriott Research Triangle Park, Durham, NC <http://www.mer2016.org/>

Garden State RPM Meet November 5-6 at the Union County Vocational-Technical School in Scotch Plains. If you haven't been to an RPM meet, this local event is a great one to start with. Clinics, model displays, layout open houses, and vendor tables. Registration and information available at <http://hansmanns.org/ld-op-nj/index.htm>
This is a NMRA supported event.

November Model Railroad Open House NJ/PA/DE/MD
<http://modelrailroadopenhouse.com/>

Amherst Railway Society "West Springfield" MA show January 28-29, 2017. The largest on the east coast. www.railroadhobbyshow.com

Proposed Constitution Changes

Position of Immediate Past President is Proposed

As mentioned in the last issue of the Whistle Post, a new position of Immediate Past President is being considered for the GSD Board of Directors. At this years' Annual Business Meeting during the Spring Event on May 14, the membership will vote on the proposal.

Implementation of the position of Immediate Past President for The Garden State Division will require this proposed change to the Constitution:

Change Article 4 Section 2 from:

The Board of Directors (BOD) shall comprise the President, Vice President, Secretary -Treasurer or Secretary and Treasurer, if the offices are separated, and at least two Directors at Large. The total number of members on the BOD should be an odd number to prevent tie votes.

To the following:

The Board of Directors (BOD) shall comprise the President, Vice President, Secretary -Treasurer or Secretary and Treasurer, if the offices are separated, Immediate Past President, if willing and able, and at least two Directors at Large.

WP

The GSD Welcomes New Members

The following have joined the NMRA and GSD within the last few months. Please welcome them:

Jim McClaskey	Alexis Nawotka
Chris Oliva	Carlos Langezaal
William Frankenfiel	John Cate
Daniel Stroh	Daniel Kenney

Members are reminded that guests attending a meet can join the NMRA as a new member through the Railpass program, and the GSD will pay for it! National, Regional, and Division membership is included.

THE CLUB CAR

Garden State Model

Railway Club

575 High Mountain Road

North Haledon, NJ 07508

www.gsmrrclub.org

The Model Railroad Club

295 Jefferson Avenue

Union, NJ 07083

<http://tmrci.org>

New York Society of Model
Engineers

341 Hoboken Road

Carlstadt, NJ 07072

www.modelengineers.org

Pacific Southern Railway Club

26 Washington Street

Rocky Hill, NJ 08553

www.pacificsouthern.org

Ramapo Valley

Railroad Club

620 Cliff Street

Ho-Ho-Kus, NJ 07423

www.ramapovalleyrailroad.com

Bound Brook Presbyterian

Railroad Club (BBPRR)

Bound Brook Cemetery

Office Building

500 Mountain Avenue,

Bound Brook, NJ 08805

Riley1644@verizon.net

SEND CLUB INFORMATION TO

MEMBERSHIP AND CLUB CONTACT:

TOM CASEY

members@nergds.com

AP Corner *By Bruce De Young, MMR - Achievement Program Chair*

In my last column (see Whistle Post #136) I began looking at how structures, cars (rolling stock), and motive power are evaluated in the Achievement Program. I looked at four of the five categories involved in the evaluation. Those were: Construction (40 pts); Detail (20 pts); Finish & Lettering (25 pts); and Scratch Built (15 pts). In this segment, I will try to explain how points are earned in the last of the five categories - Conformity (25 pts). I will also give some tips on preparing the documentation.

When looking at the Conformity category while evaluating a model, the question becomes whether or not the model has a prototypical appearance and/or the modeler has adhered to prototype practice in the construction of the model. When looking at a model from the perspective of Conformity, the evaluators ask themselves questions like: "Is this model logical?", "If this item was built full size in the real world, would it be built this way?", and "Would this item actually serve its intended purpose?"

Once again there is a point matrix that helps evaluators determine the number of points that should be awarded to a model.

Here is how the matrix is used. Let's say that the model is a structure largely conforms to the prototype except for the foundation. So the amount of conformity is not 'extensive', but a bit below that – and the construction of all except the foundation is 'largely prototypical'. Evaluators would then

be looking somewhere in the two rows above the bottom row, and in the columns on either side of the middle column. The range of scores would be from 11 to 16. There will always be some subjectivity in the evaluation process, but the use of a matrix, plus the experience of looking at many models, helps to address that.

So, there are two basic ways to ensure that you get the most points that you can in the area of Conformity. You can either start with a photo of a particular prototype structure, railroad car, or locomotive, and then make your model conform to that photo to the best of your modeling ability, or you can make a drawing of your model and then construct it using 'prototypical' construction techniques. A photo or a scale drawing is essential in your documentation. In fact, without either, your point total is limited to 15 points.

Although whimsical models can be fun to build and nice to look at, they will not earn the points in the Conformity section that you would earn with a prototypical model.

Let me show an example of the use of a photo to show conformity of an HO_n3 gondola that I built from scratch, shown on the next page. It began life as a flat car, and then wood sides were added to form the gondola. Notice that some of the flat car decking extends beyond the ends of the gondola. I felt that an evaluator might question if that was prototypical.

(continued on next page)

Conformity	Partly Prototypical										Largely Prototypical										Completely Prototypical									
Minimal	0	1	2	3	4	5	6	7	8	9	10	11	12	13	14	15	16	17	18	19	20									
	1	2	3	4	5	6	7	8	9	10	11	12	13	14	15	16	17	18	19	20	21									
	2	3	4	5	6	7	8	9	10	11	12	13	14	15	16	17	18	19	20	21	22									
	3	4	5	6	7	8	9	10	11	12	13	14	15	16	17	18	19	20	21	22	23									
	4	5	6	7	8	9	10	11	12	13	14	15	16	17	18	19	20	21	22	23	24									
Extensive	5	6	7	8	9	10	11	12	13	14	15	16	17	18	19	20	21	22	23	24	25									

AT THE THROTTLE

**President and
Achievement Program Chair**
Bruce De Young
pres@nergsd.com

Vice President and Clinic Chair
Jim Fawcett
vp@nergsd.com

Treasurer and NER Director
Bob Dennis
treas@nergsd.com

Secretary
Jim Walsh
sec@nergsd.com

**Director and
Youth Program Chair**
Anthony Piccirillo
anthony13trains@gmail.com

**Director and
Public Relations Chair**
Andrew Brusgard
ajb1102@comcast.net

Director
Ciro Compagno
richmondharbor@gmail.com

**Director and
Membership Chair**
Tom Casey
members@nergsd.com

Director and WP Editor
Jim Homoki
whistlepost@nergsd.com

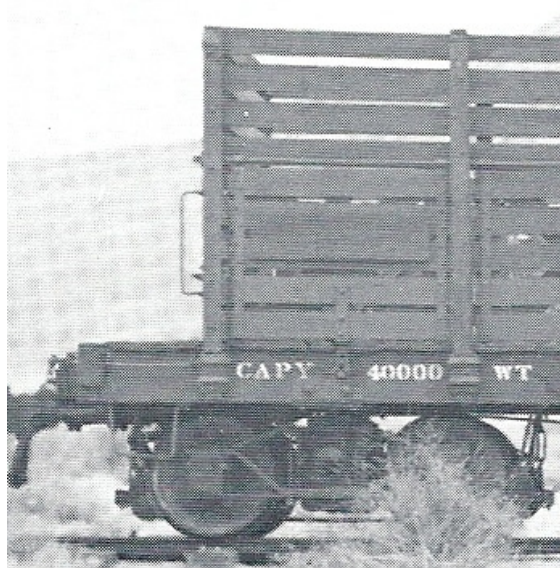
Director and Webmaster
Tom Wortmann
webmaster@nergsd.com

Director
Mark Moritz
mwmoritz@optonline.net

(AP Corner continued from previous page)

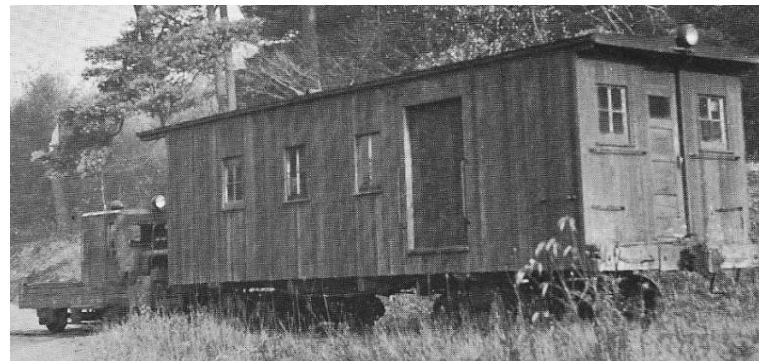


So, I included the following photo as part of my documentation. It shows the deck of the flat car extending beyond the end walls as I modeled it. That prototype picture documented the model's conformity in an area that I thought might be questioned. I also included the drawings I made of the under frame and gondola sides.



Let me give another example of the effective use of a picture to show conformity. I found a picture of this old combine/school bus. Yes, the railroad used it every day to pick kids up along the ROW and drop them in town for school. It also picked up and delivered the mail at the same time.

It is hard to see in the photo below, but there are stairs and a platform on the rear of the combine near that critter that is pushing the car.



Now, I wanted to model this, but not 'exactly'. I wanted to capture the essence of such a car. So, I stated that my model was inspired by this photo and that my intent was to build something similar, but not exact. No one could then fault me for a few differences I chose to make.

On the following page is my HO scale model. Again I included drawings of the under frame along with drawings of the walls. My model has a removable roof with interior detailing. The prototype photo went a long way to show conformity.

(continued on next page)

Arriving Soon....

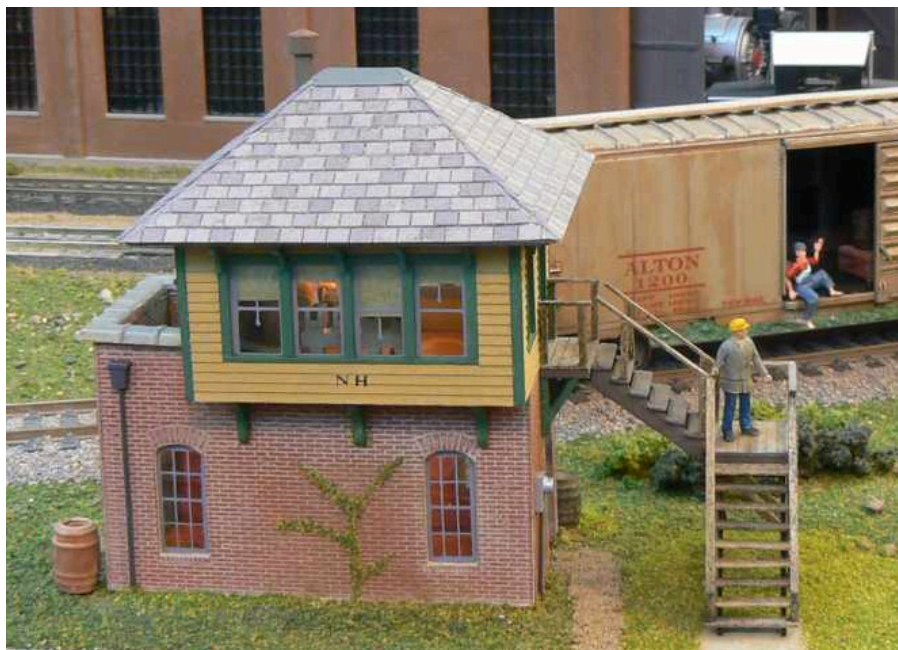


(AP Corner continued from previous page)



Let me show one more use of a prototype photo to help document conformity before closing with some comments on the written documentation.

I build a lot of structures with slate roofs since they were/are very common in northern New Jersey. When dealing with the outside edges (corners) of hip roofs covered with slate, there were a number of ways to finish them off: metal caps, slate caps, and mitered corners with flashing underneath. The last technique is one that might be questioned by an evaluator. Here is an example on my FSM Signal Tower.



I modeled the edges of the hip roof as mitered. To head off any questions, I showed a prototype photo of a real slate hip roof with mitered corners and mentioned in my documentation that I decided to model the roof in that manner.



As you can see, in the first and last example above, I used a prototype photo to establish conformity for one particular aspect of my model that I thought might be questioned by the evaluators. In the middle example, the Combine, I used the photo to establish the conformity of the entire model.

Okay, enough about what is meant by conformity and how to document it in your modeling. Now let me finish with a few comments about developing the paperwork to accompany your model when you want it evaluated for the Achievement Program.

Don't make this more complicated than it has to be. The evaluators will be looking at your model (structure, railroad car, motive power) in the five areas that we covered in this column and the previous column. The form provided on the NRMA, NER, and GSD websites has these five categories listed, but doesn't have much room to describe what you did in each area. So, on the form, in each of the five areas, simply state "See Attached Documentation".

(continued on next page)

(AP Corner continued from previous page)

Then, using your word processor, develop a form that has the five paragraph headings: Construction Techniques, Detail, Conformity, Finish & Lettering, and Scratch Built. In each of these areas, write a short paragraph addressing the category.

Construction Techniques: Include whether it was a kit, a kit bash, or a scratch build. Talk briefly about the medium (styrene, wood, plaster, paper, metal, etc). In broad strokes talk about how you built the model. If a kit, specifically talk about what you did to add to the original kit materials.

Detail: What details did you add to the model? Make two lists of details: commercial details and scratchbuilt details. The second will help earn more points than the first when you get to the Scratch Build category.

Conformity: Look at what I talked about in this column. Add a picture or two to help make your case that your model conforms to the prototype.

Finish & Lettering: A few sentences talking about how you painted, lettered, and/or weathered your model. If you left it un-weathered on purpose, state that. I will tell you that at least some weathering will help your scores. There is not much out in the real world that doesn't show some fading, dirt, dings, etc.

Scratch Built: If you build a model from a kit and don't add any scratch built 'extras', you will leave points at the door. Add some scratch built details: awnings, garbage sheds, porches, gutters, downspouts, electrical boxes, interior details etc. You might decide not to use the roof provided in the kit, but scratch build your own. You get the idea.

I hope that those interested in the Achievement Program find this and the previous column interesting. There were other articles in previous issues of the Whistle Post providing tips for the Achievement Program written by Past President Norm Frowley. Norm ran the Achievement Program for both the Division and the Region, and is an MMR. He knows what he is talking about. Look in these past issues for examples: Issue #111, pages 8&9; Issue #110, pages 6-8.

Finally, if the paper work is giving you problems, contact me through the GSD website. We have samples of most of the documentation available as samples for you to follow. **WP**

Garden State Division Members on YouTube

By Bruce De Young, MMR

There are members of the Division who have posted modeling videos on YouTube, and we would like to feature them in future issues of the Whistle Post. So, if you are one of those individuals, please let us know. You can contact our Editor at: whistlepost@nergsgd.com

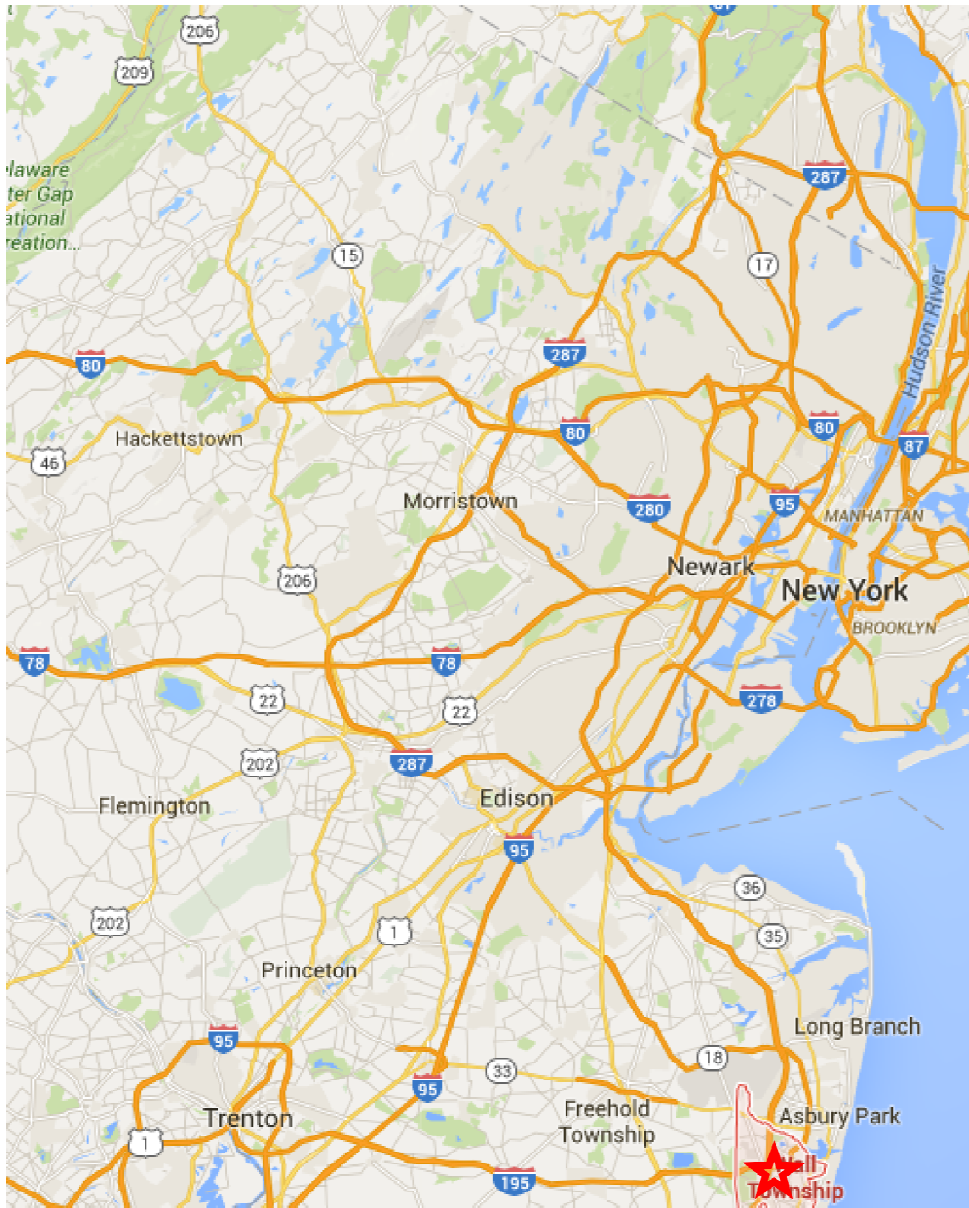
We will start off with a link to a video made by GSD member Mark Lutz who models a branch of the Erie RR in HO Scale. His video features one of his brass locos that has been painted, weathered, and had DCC installed. Click on this link to see his Erie Berkshire S1 in action: <https://www.youtube.com/watch?v=dgxIGGE8tA>

While we are at it, below is a photo taken of Mark's layout when we recently visited it to check it out for the Golden Spike Award. **WP**



MAPS AND DIRECTIONS FOR THE SPRING EVENT

INFOAGE MUSEUM, WALL, NJ

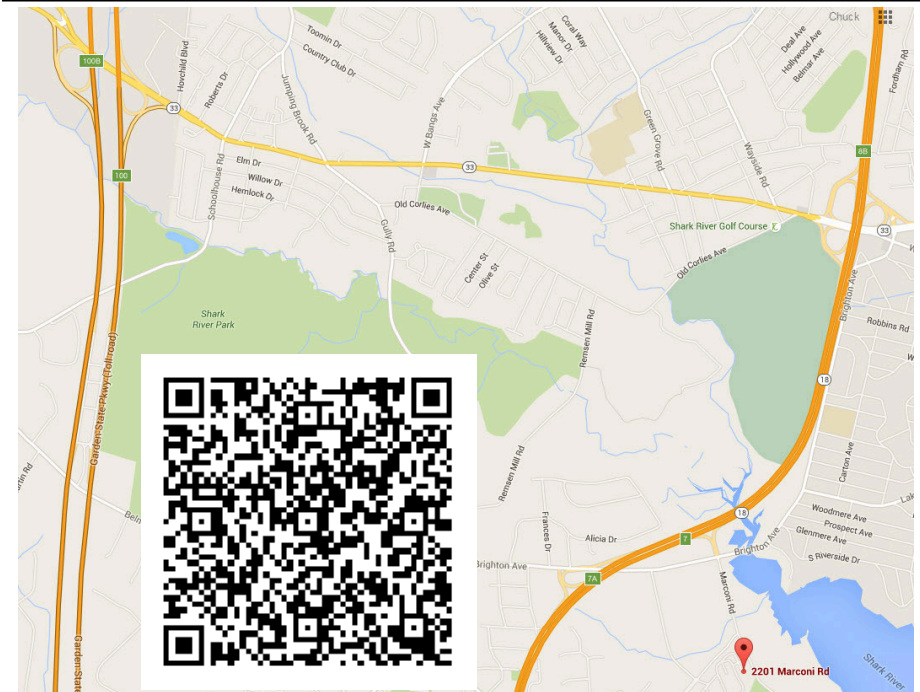


Always Looking for New Venues

We are always looking for new locations to hold our Division Events. In the past we have met in such places Model RR Clubs, schools, Municipal Buildings, VFW Halls, Marine Corps League Buildings, 4-H Buildings, and Country Clubs. What all these locations had in common was a 'link' to a GSD member.

How about you? Do you know of a suitable location near you? If so, let us know. You can reach us thru the e-mail address on our website, or you can contact President Bruce De Young at bdeyoung@optonline.net.

Although we have managed to get some of our facilities free, we do have a small budget for rental of facilities. Can you help us out? **WP**



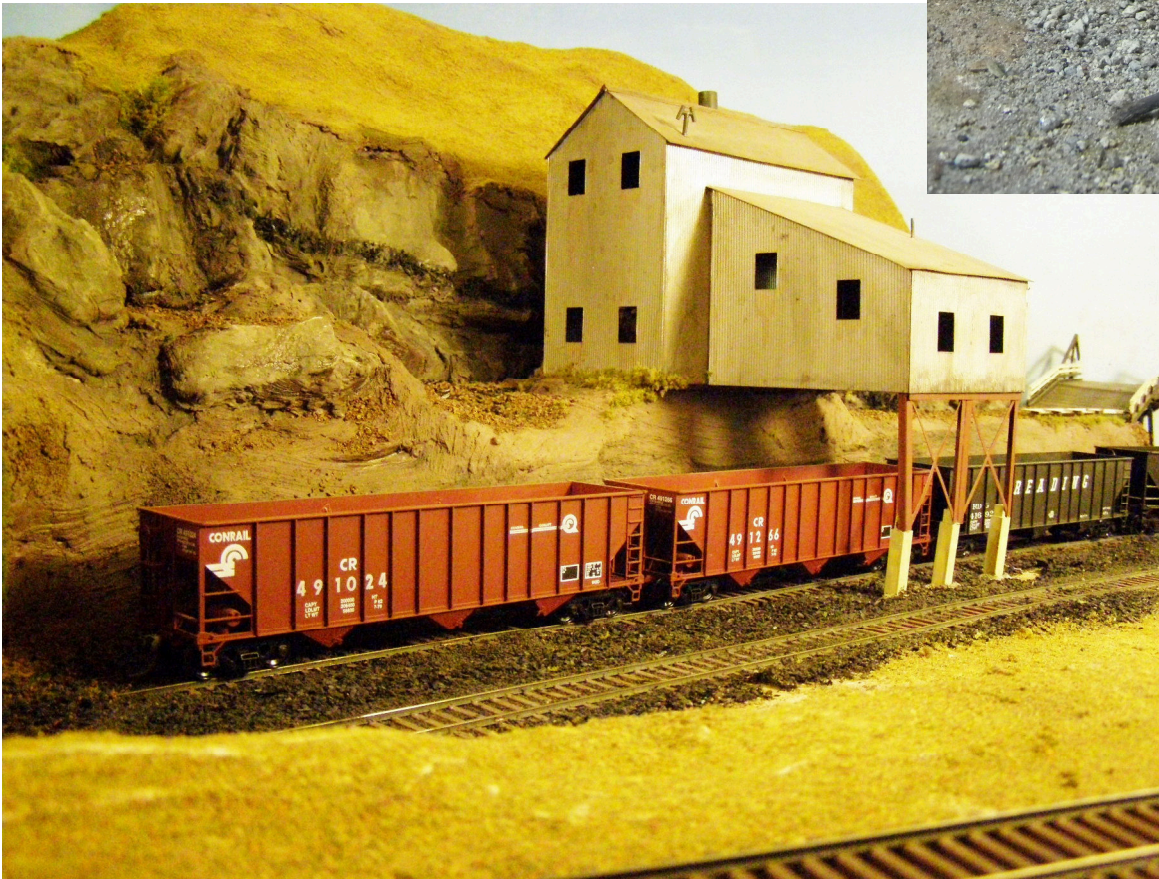
From the north, taking the Garden State Parkway or Route 18 south will be best way to get to the Event. The address is 2201 Marconi Road in Wall, NJ. [HTTP://INFOAGE.ORG/](http://infoage.org/)

Exhibits in the museum will be open, and the new layout of the Garden State Central Model Railroad Club will be open for their first "Unofficial" Open House.

LAYOUT SELF GUIDED TOURS

For the Spring Event there will be the Garden State Central club and 10 home layouts open for self guided tours, more than enough to keep visitors busy during the afternoon. A selection of photos are included in this section.

Right: A PRR F7 is shown on a Pennsy style cut stone bridge on Ed Elwell's layout.



Left: Coal hoppers are spotted for loading on John Vogler's layout.

(Layouts continued from previous page)



Above: Bob Shepard fills his 38'x70' basement with a freelanced HO layout. He has a large collection of trains, and the layout is set up with several loops on two levels. His equipment represents a wide era, 1948 to the present. This large cityscape is just a small section of the layout, much of which is still under construction.

Upper Left: An expanse of layout on Ken Sharkey's empire.



Left: A busy switching location on the Jersey Mercantile Railroad of Jack Menaker. Jack models a freelanced New Jersey freight carrier in the mid 1950s , with three large industrial areas generating most of the traffic.

(Layouts continued from previous page)

Right: Jerry Wooley is modeling the NY&LB circa 1952-1958 and is making a lot of progress on a double deck layout. This jointly operated line features the equipment of the CNJ and PRR. His website can be found at <http://nyandlb.com>.

Below: An RDC is making a station stop on the G Scale Broken Bush and Round Top garden railroad of Jules Heilicz. Jules models older equipment, especially mining cars and MOW cars, and maintains a website as well: www.brokenbushandroundtop.com.



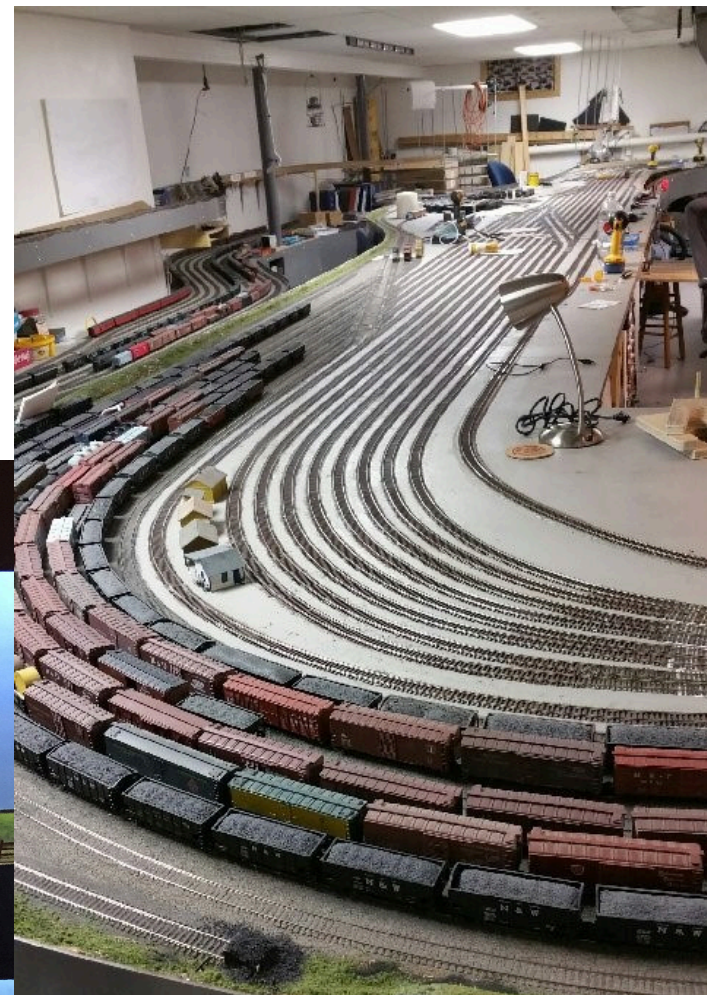
Below: Frank Neufeld models an earlier era with a very detailed layout.



(Layouts continued from previous page)

Right: A view of a large yard on Ray Russell's layout.

Below: Ted Dilorio models the Maryland and Pennsylvania RR (Ma & Pa) in HO in 1943, from York, PA to Red Lion, PA. The layout features a unique backbone style helix, shown in the photo. The latest on his progress can be found on his blog: <http://maparr1943.blogspot.com/>



ABOUT THE WHISTLE POST

Editor

Jim Homoki
whistlepost@nergds.com

Mailing Address

P.O. Box 43
Flagtown, NJ 08821

Technical Assistant

Chuck Diljak

Associate Editor

Bruce De Young

Division Photographer

Jim Walsh

Deadlines for submissions to the Whistle Post are January 10, April 10, July 10, and October 10.

COPYRIGHT:

© 2016 GARDEN STATE DIVISION

ALL RIGHTS RESERVED.

DISTRIBUTION OF THIS NEWSLETTER IS ENCOURAGED, BUT IT MAY NOT BE REPUBLISHED IN PART OR IN WHOLE WITHOUT WRITTEN PERMISSION FROM THE EDITOR.



The GSD now has a Twitter account and a Facebook page.

Follow the GSD at "GSD of the NMRA@GardenStateDiv"

Meeting Reports, past Articles, and complete issues of the Whistle Post can be found on the GSD website
www.nergds.com

Communications and Webmaster Help Wanted!

The GSD would like additional help with our electronic communications and website. Please contact
Bruce De Young:
pres@nergds.com

NE RAILROAD PROTOTYPE MODELERS MEET (New England/Northeast)

A bigger and better location at the Holiday Inn, 1 Bright Meadow Blvd., Enfield, CT.

Now in it's 14th year!

June 3-4 2016

www.neprototypemeet.com/Welcome.html

New Members Wanted!

No room for a home layout? Not sure you have the experience?
We will teach.

The New York Society of Model Engineers is looking for new members. 5,000 square feet of model trains. Two large layouts, "HO" and "O". Full machine shop, large research library. Dues only \$15.00 a month. Located in Carlstadt, NJ, 1/2 mile from MetLife Stadium. See membership page at www.ModelEngineers.org for details and directions.

Not getting the bi-monthly NMRA eBULLETIN?

The new **NMRA eBulletin** comes out every other month near the 1st of the month. Either your SPAM filter is blocking it, or you need to update your email address. Go to:

<http://www.nmra.org/nmra-magazine>

The Model Railroad Shop

290 Vail Avenue, Piscataway NJ 08854
Phone: 732-968-5696
Fax: 732-968-3314

Continuously operated since 1933

Daily 10AM - 6PM
Wed and Fri 10AM - 9PM
Sun Closed

www.themodelrailroadshop.com

THE BIG LITTLE RAILROAD SHOP

63 West Main Street, Somerville, NJ 08876

Hours: Tuesday-Friday 11:00 am-7:00 pm
Saturday 11:00 am-5:00 pm
Sunday 12:00 pm-4:00 pm

"NOT JUST TRAINS"

Slot Cars, Plastic Kits, Modeling & Diorama Supplies Too!

908.685.8892

www.biglittle.com

e-mail: jan@biglittle.com