

Whistle Post

GARDEN STATE DIVISION • NER • NMRA

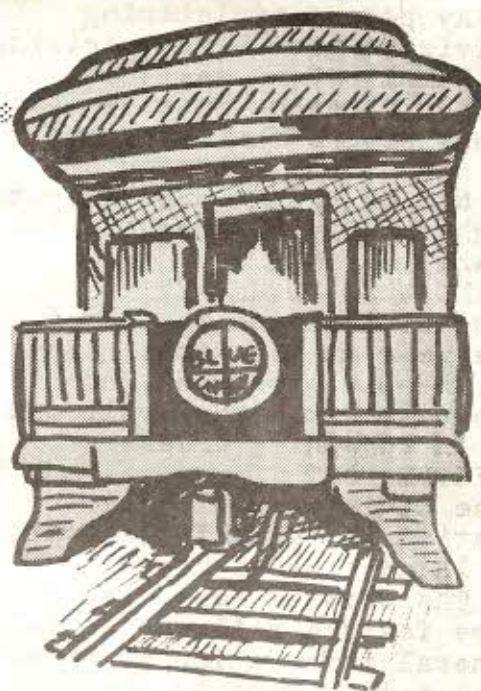
Number 52

May 1974

ASBURY PARK SAT MAY 18

Saturday May 18th, the Garden State Division will again hold it's Little Convention in Asbury Park at Trinity Church, corner of Grand and Asbury Avenues.

Things will get underway with club visits at 10 a.m. Clinics include "Photography by John Allen", live clinics on Scenery, by Ollie Billings, and Installing Switch Machines by Joe Kaufman. A special showing of the film, "Roads to Yesterday" will be presented. Model Contests, Prizes, White Elephant tables, etc. After the photo clinic, take a photo of your own model and bring it to the photo contest in October at the Rahway meet. Registration \$1.50 at the Door. The coffee pot will be on all day. Info-Bob Judge, 508 Lakewood Rd., Neptune, NJ07753.



As a special added attraction for our Little convention, Jersey Central's last standard open-end observation car in regular main-line service in the United States will come through Asbury Park on May 18th. Be sure to bring your cameras.

What is GSD?

GSD- The Garden State Division, Northeastern Region, National Model Railroad Association- was established to increase the enjoyment of model railroading in the part of New Jersey that falls within the Northeastern Region of the NMRA.

It is not a club, nor does the Division have a permanent layout. It is a group of your fellow model railroaders banded together to hold meets and other activities of mutual interest.

WHO ARE THE MEMBERS?

According to Division By-Laws, Any person registering at a Division meet or subscribing to the Whistle Post shall be considered a member of this Division for one year. You do not have to be a member of either NER or NMRA to participate, although the Division encourages membership.

WHERE AND WHEN DO WE MEET?

The Division holds 5 or 6 meets a year at locations rotated around the Division area, or held jointly with model railroad groups in adjoining areas.

THE WHISTLE POST

The Division's official publication is the Whistle Post, issued in advance of upcoming meets. The Whistle Post also contains feature railroad articles and general information of interest to model railroaders in the Garden State area. We would prefer to greet you at the next meet- but if can't make it and you would like to keep posted, you can subscribe for \$1.50 sent to the Editor Bob Judge, 508 Lakewood Rd., Neptune, N.J.

Annual Elections for BOD

Each year, according to our By Laws, we elect 5 members of the Bd. of Directors (4 for two year terms, one for a one year term.)

Present make up of the BOD is as follows

Class of '74

John Pautz
Ollie Billings
Bob Stafford
Paul Wheeler
Pete Hugger

Class of '75

Eric Bogedal
Joe Kaufman
Dave Placer
Frank Taylor

We try to represent all areas of the GSD Area, Shore, North East, North West, Central and even Staten Island.

We also have found it an advantage to have representation by pairs (if possible) to help needle each to come to BOD meetings and assist in looking for sites for meets together.

To this end the following have been cajoled, encouraged and are willing to run for the 5 positions.

Ollie Billings (Incumbent)

Dave Martin

Bob Judge
William Winterling

Pete Hugger (Incumbent)

Nominations are open to all to run. Even more important, all are always welcome at BOD meetings and to help at our meets. Recommendations for clinics, types of meets etc. are always welcome. See you all at the Little Convention May 18th.

The Chairman Speaks



This being my farewell address, I can only say I have enjoyed these past two years and I certainly hope we (the BOD) have provided a program that you wanted and enjoyed. My memories over the two years generally deal with people and new friends (and some older ones I became reacquainted with) because this to me has been a big plus.

Although I am not leaving the BOD, I am turning over the reins to a very capable person in Eric Bogedal, Eric and his gang (Joe Kaufman, Bill Winterling et. al) from North Jersey have certainly made a tremendous contribution since joining the BOD (Haledon meet, Transistor Throttle Clinic, Clinic on High Frequency lighting at last year's Little convention).

All of the BOD have made their contribution and without them it would be impossible to have had the program we had. I say publicly, thanks to John Pautz (who since has left the area and was a tremendous contributor and a convert from H. O. (i.e.: "O" gauge), Ollie Billings who prints the Whistle Post for us, Bob Stafford

(Piggy Back meet was planned by Bob), Frank Taylor (always welcomed us and made the firehouse available to us), Dave Placer (picture taking, idea man, always around to help at meets), and Paul Wheeler, (who has cared for the green stuff that has its coming and going).

In addition, Bob Judge, who's Mister Everything to the GSD for so many years. Editor of the Whistle Post, needler #1 (to get articles written for W.P. and notices off to Mags.) and an ever present helper. Has run the Little Convention at least 4-5 times and is again running the Asbury Park affair.

These fellows have really worked and without them I couldn't have existed. I think all of us (P.O.M., plain old members) owe these fellows our thanks.

Since this (Asbury Park) is the last meet this year, the next year's meets are already in the planning stage. Rahway for the fall, to visit the new Watchung Valley Model Railroad Club layout, now under construction, plus clinics etc. This Saturday meet will be followed with a Monday night clinic. (Subject not firmed up).

Again I want to thank all of you for making these last two years a real pleasure for me.

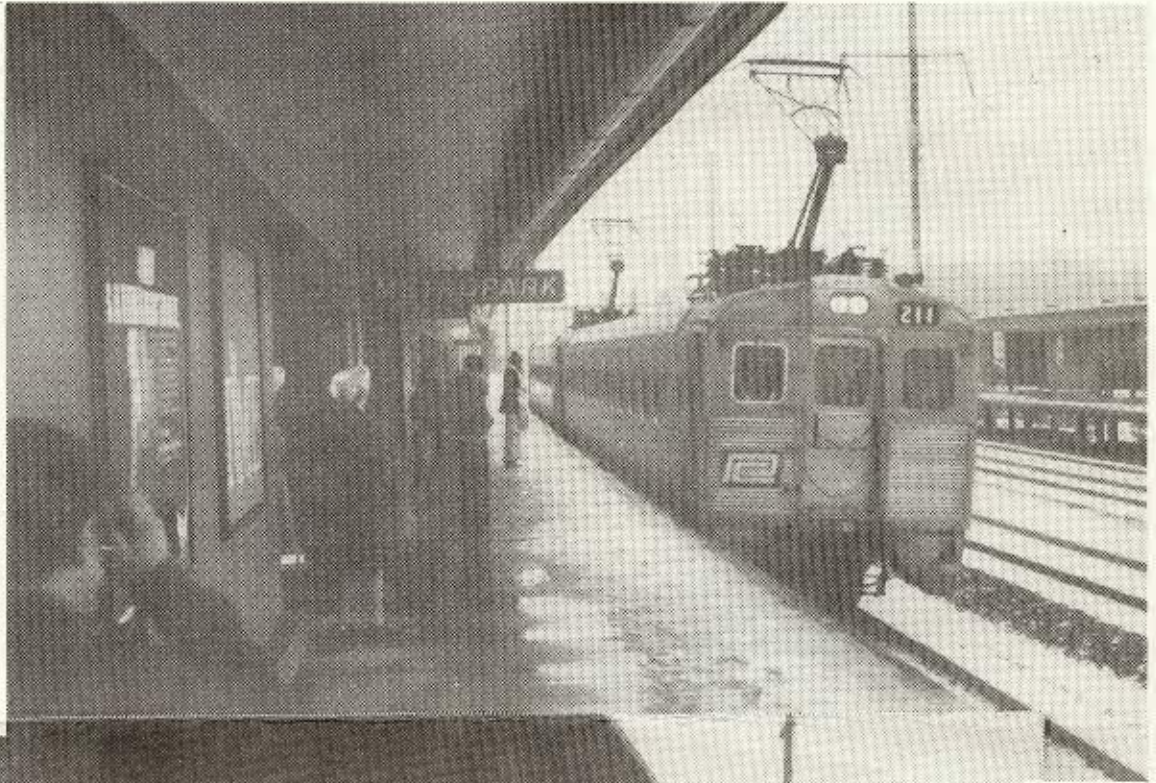
See you in Asbury May 18th.

Pete Hugger

You missed it!

MARCH 30th METROPARK to PHILADELPHIA
GARDEN STATE DIVISION FAN TRIP with
our excellent guide Roman Sohor.

Things got started in the rain at Metropark, where we waited for our Metroliner.

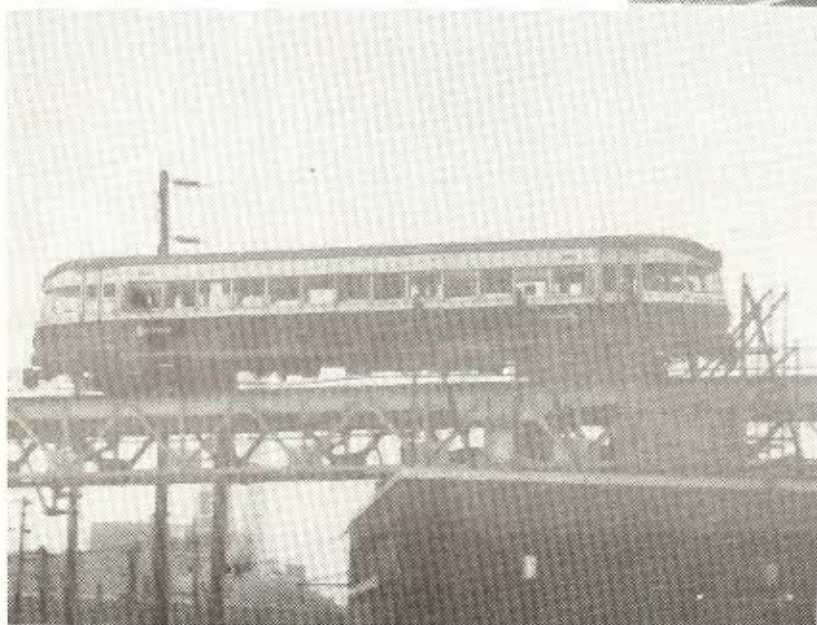
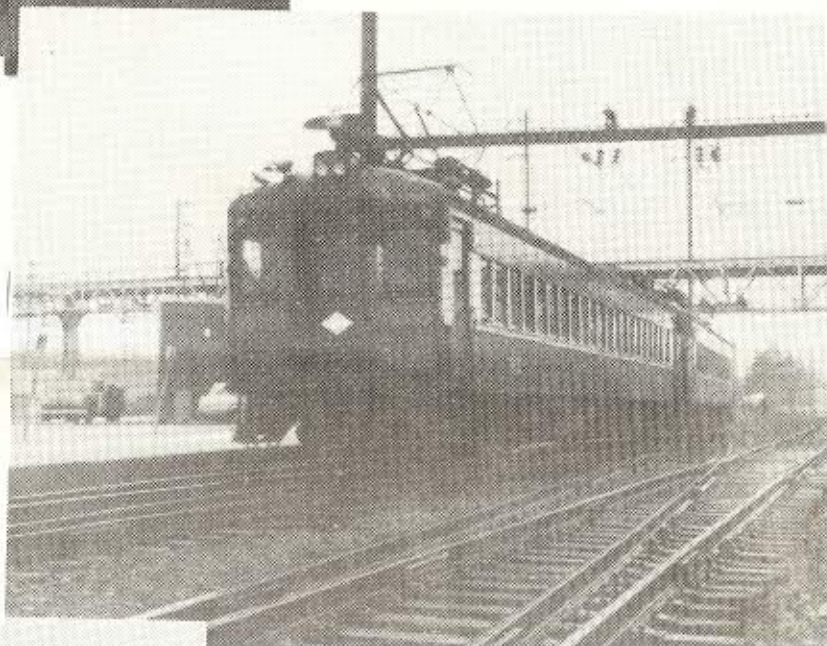


What some people won't go through to go on a railroad fan trip. That's our guide on the far right. Thanks for a fantastic trip Roman.

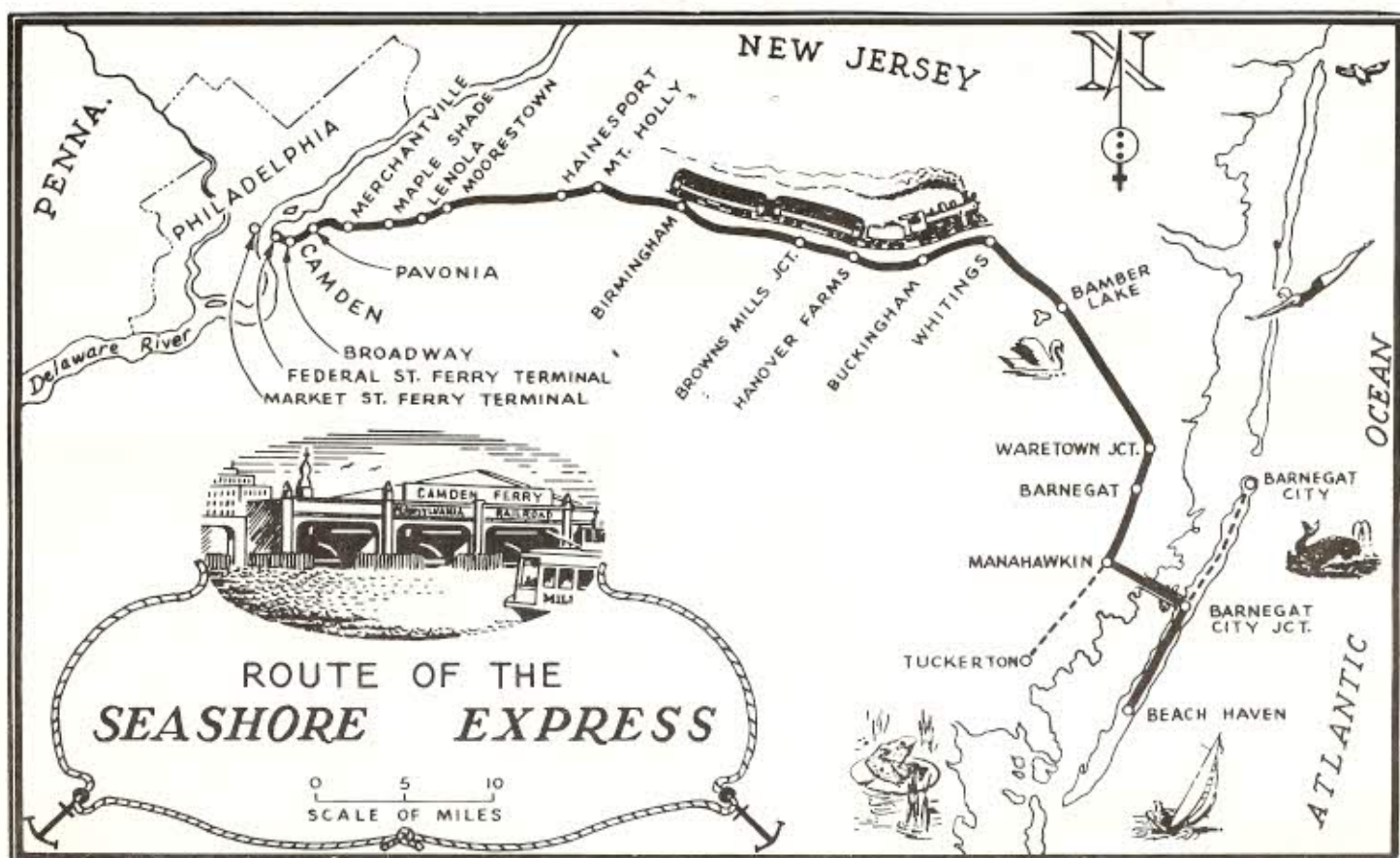


Part of the trip
took us on the
Philadelphia
subway system.

We even rode on the
Reading to Norristown...



...where we then rode the
Red Arrow "Bullet" train
back to Philly. Then the
Red Arrow Interurban to
Sharon Hill . Perfect
timing and our train was
there for the return to
30th Street Station, local
to Trenton and finally
back to Metropark. WOW!



Route of the Seashore Express is traced on map showing towns serviced by the short-lived railroad.

Railroading Venture Recounted

BOOK REVIEW

THE TUCKERTON RAILROAD: A CHRONICLE OF TRANSPORT TO THE NEW JERSEY SEASHORE by John Brinckmann. 209 pages. Available through author, 17 Runyon Ave., Edison, N.J. 08817. \$16.75.

Hundreds of persons from all parts of the state converged on Tuckerton Aug. 9, 1872 for what author John Brinckmann calls "a fabulous day in local history."

The occasion was the opening of the spur rail line to Edge Cove where excursioners boarded the steamboat "Barclay" for a ride across Little Egg Harbor to the newly discovered resort of Long Beach Island.

Details of the great event provide one of the many interesting accounts in Brinckmann's self-published treatise on a remarkable venture in railroading that came to an abrupt end in 1940.

The Tuckerton, which started 69 years of passenger service on Nov. 11, 1871, wound its way 29 miles from the sparsely settled community for which it was named to a terminus at Whiting, Manchester Township.

Two trains went northward daily, at 4:35 and 11 a.m., and two arrived in town daily, at 2:45 and 9 p.m. There were regular stops at West Creek, Eagleswood Township; Manahawkin, Stafford Township, and Barnegat, Union Township. Flag stops were made at such crossings as Parkertown, Little Egg Harbor Township; Mayetta, Stafford Township, and Waretown.

The line flourished simply because it was a vast improvement over stage coach service. It became just a memory when the automobile came into its own.

(con't on page 7)

Tuckerton Railroad
(con't from page 6)

Brinckmann's book provides a fine look at the southern Ocean County area in the railroad era. Much of it is devoted to rail service on Long Beach Island for the Tuckerton connected by bridge to the vacation mecca in 1886.

Since he is so obviously a railroad buff, Brinckmann includes a vast amount of technical material that may only interest his fellow trackage enthusiasts. No mind, the average reader can skip these sections and still enjoy making the acquaintance of many distinguished citizens of an earlier day whose names are well known in the Tuckerton area.

Archelaus Pharo, for example, whose descendants still live in his N. Green Street home, helped to found the Tuckerton, Dr. Theophilus T. Price, who practiced in Tuckerton, was another to assist in launching the great venture.

Brinckmann's style is rather florid at times, but he displays such enthusiasm for his subject that you can forgive him a complicated sentence here or there. He has been working on the book as an author since 1955 and as a printer since 1969.

Brinckmann bought enough type to handset several pages at a time and ground them out one by one. The illustrations were commercially printed, however, and the books bound by a professional. There are just 1,000 copies available, which may mean it will become a collector's item for book fanciers as well as rail buffs.

The Wreck Pond and Northern is just one of the two clubs you will see at the Little Convention in Asbury Park on May 18th. See you there.

NEW JERSEY DIVISION MEET
Prepare for fun in model railroading
Peoples National Bank, Westmont,
N.J. May 11, 1974

Every one can use money, but this spring the Division is using the bank to increase your interest in model railroading. We have been graciously loaned the bank's community room which is above the bank, overlooking Cuthbert Blvd. in Dick Kitz's Newton Creek Valley. The activities will begin at 1:00 PM or as soon as most of you show up. Registration for modelers is \$1 with wives, sons, daughters, etc. free.

To provide you a means of creating a firm foundation for your layout and model, your super is going to present demonstrations on the use of laminated Homosote to make road bed or track board. Creation of spiral easements and superlevations with this method will be considered. We will look into the creation of track as a model in addition to a path for your trains.

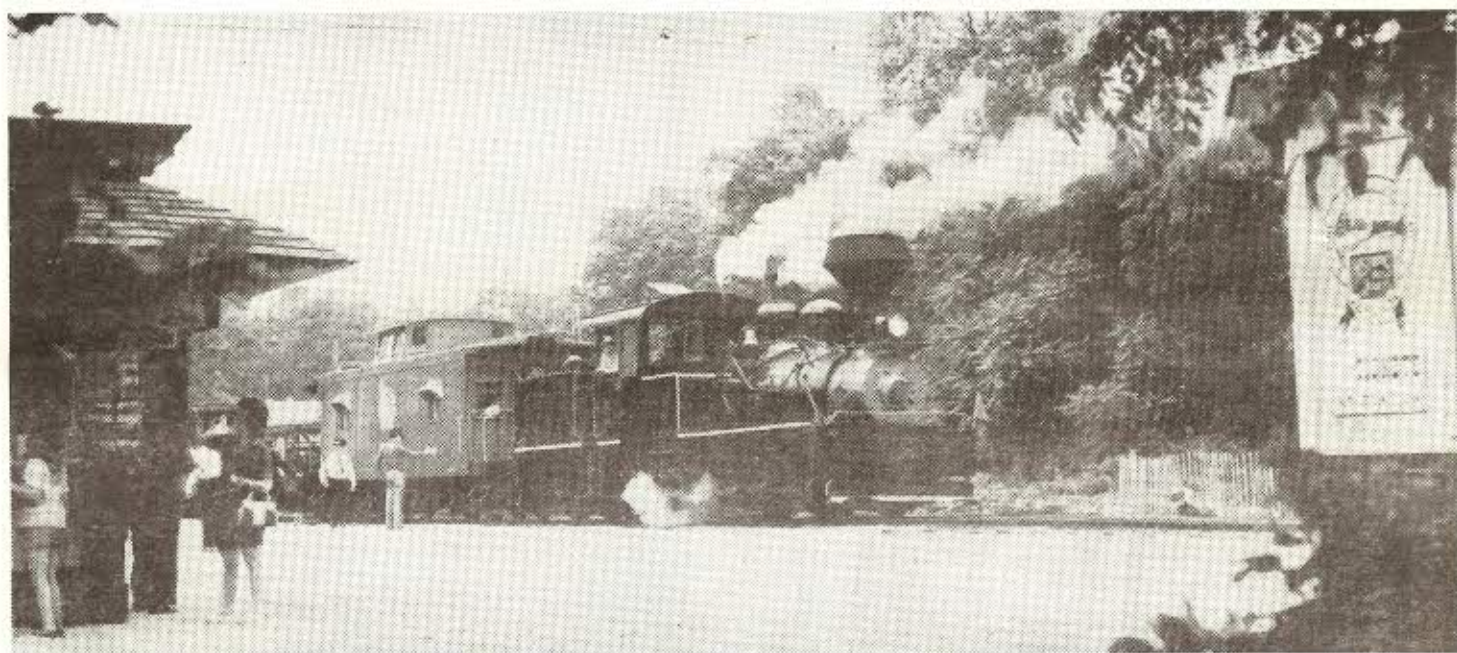
Between now and then, go out and look at some track, different kinds of track. Really observe them. Also think about what kind of track your railroad should have.

To vary the fare a bit, Bob Kip will present a slide program entitled "Mainlines Can Also Have A Rural Flavor" which will take us from the Mississippi, west.

More information from,

Martin Evoy 3rd
523 King George Rd.
Cherry Hill, N.J. 08034





The Pine Creek Railroad at Allaire State Park will operate it's 1927 Shay from Noon to 5 p.m. weekends. To coincide with it's 10th anniversary at Allaire in June, they are conducting a membership drive aimed at those who are willing to donate \$15. and 75 hours of volunteer time annually. Applications are available from the railroad, Allaire, NJ07727.



Bob Judge, Editor
508 Lakewood Rd., Neptune, NJ07753



FIRST CLASS MAIL

In THIS ISSUE:
*Tuckerton Railroad
Book Review
*Blue Comet Observation
*Little Convention
Asbury Park May 18th
*New Jersey Division
meet May 11th
*Photo Contest
and more....

Garden State Model RR Club
575 High Mountain Rd.
North Haledon, N.J.