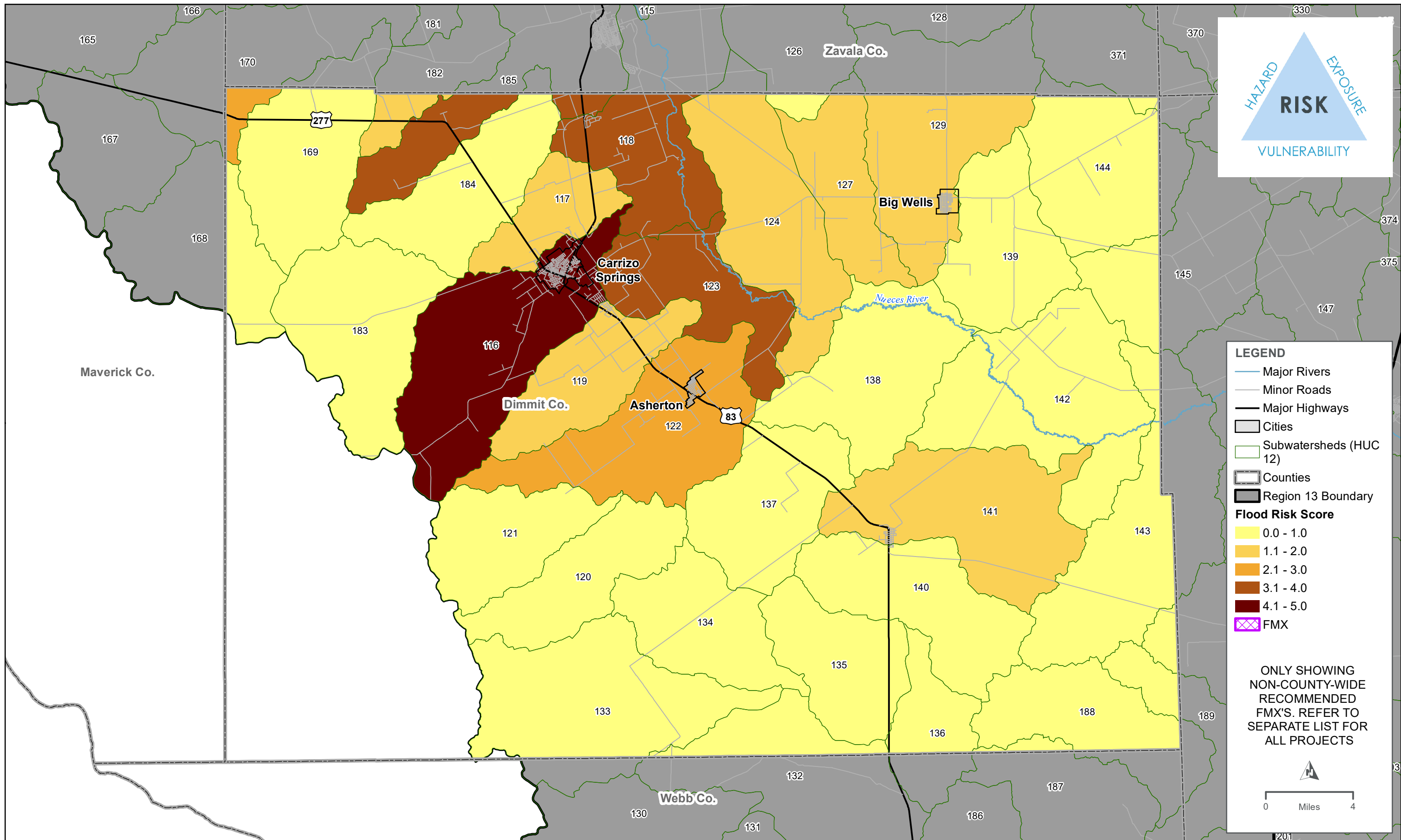


REGION 13 - EXISTING FLOOD HAZARD - DIMMIT COUNTY
MAP 23E1



REGION 13 - HIGHEST FLOOD RISK WITH RECOMMENDED FMX'S - DIMMIT COUNTY
MAP 23E2



Recommended List of Flood Mitigation Actions (FMX)s,
for Dimmit County

Type (FMX)	ID	Name	Description	Estimated Study Cost	Sponsor	RFPG Goal ID	Counties	2024 Amended RFP Action
-	-	-	-	-	-	-	-	-

# of FMXs Sponsored in County		
FMX	2023 RFP	2024 Amended RFP
FME	0	0
FMS	0	0
FMP	0	0
	0	0

Other FMXs that list county in project/study area but are sponsored by an entity outside the county (refer to Appendix A, Tables 15-17 for more information)

FMX	ID	Name	Sponsor
FME	131000174	Nueces Basin Early Flood Warning System	Nueces River Authority
FME	131000175	Nueces Basin Low Water Crossing Study and Upgrade Prioritization	Nueces River Authority
FME	131000176	Nueces Basin High Hazard Dam Identification and Risk Assessment	Nueces River Authority
FME	131000177	Nueces Basin Floodplain Map Updates	Nueces River Authority
FME	131000178	Nueces Basin Assessment of Flood Mitigation and Performance of Nature-based Solutions (NBS)	Nueces River Authority
FME	131000179	Scaling Up Nature-based Solutions (NBS) in the Nueces Flood Planning Region	Nueces River Authority
FMS	132000050	Nueces Basin Minimum Flood Management Standards	Nueces River Authority
FMS	132000051	Nueces Basin Flood Public Information Campaign	Nueces River Authority