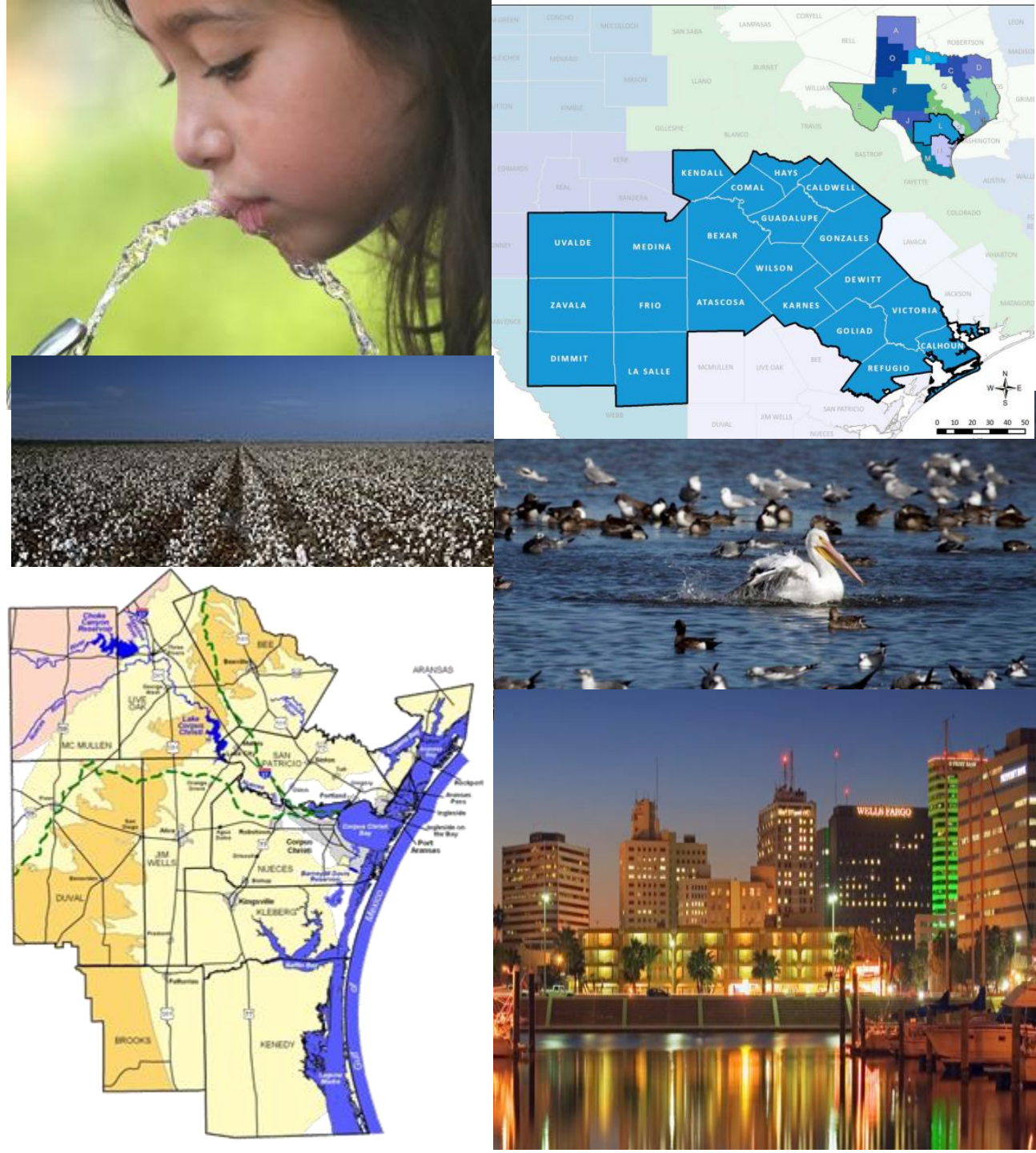


Recommended Water Supply Strategies through Year 2080

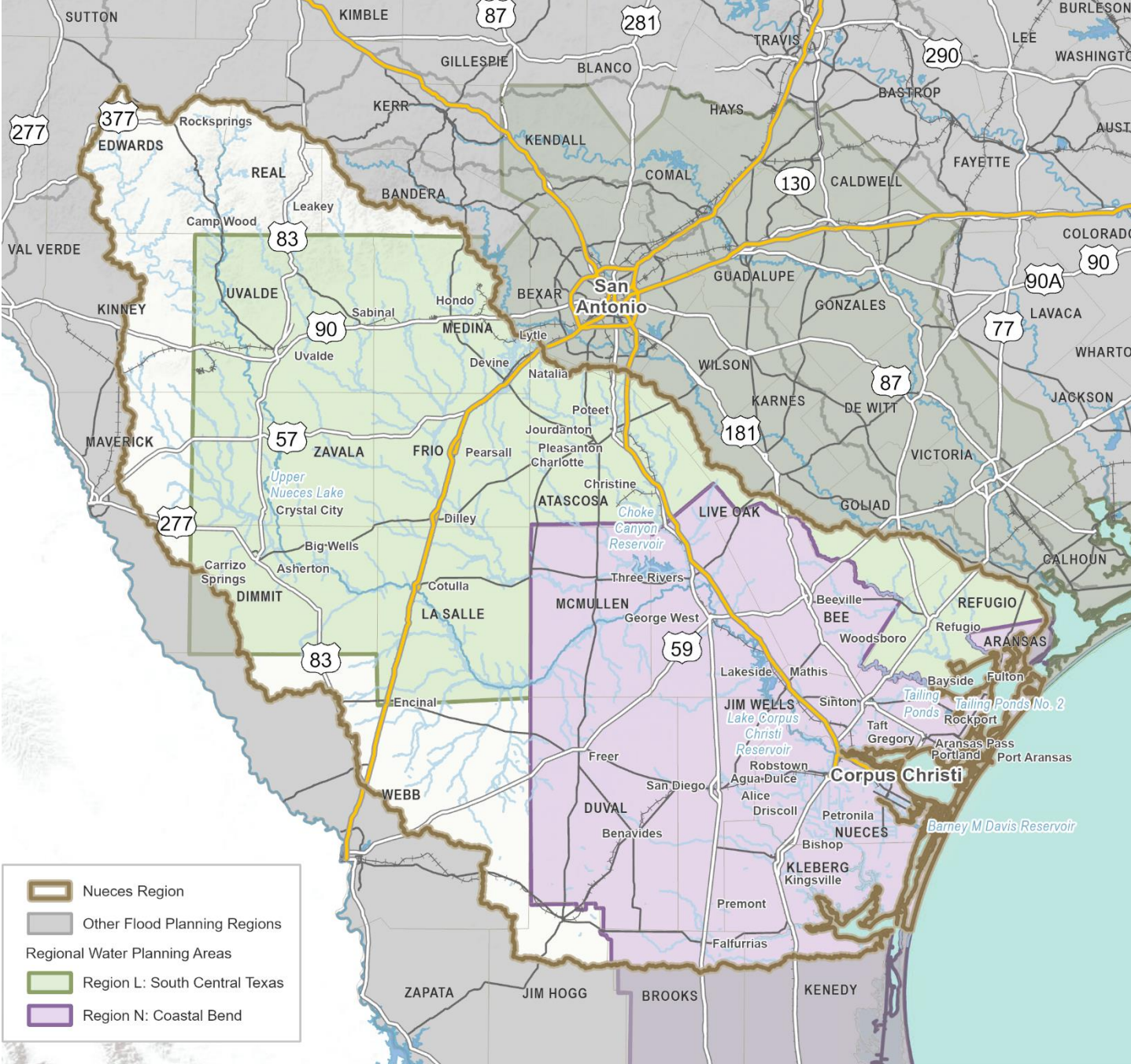
Draft 2026 Region N & L Plans

Nueces Basin Summit- June 16, 2025



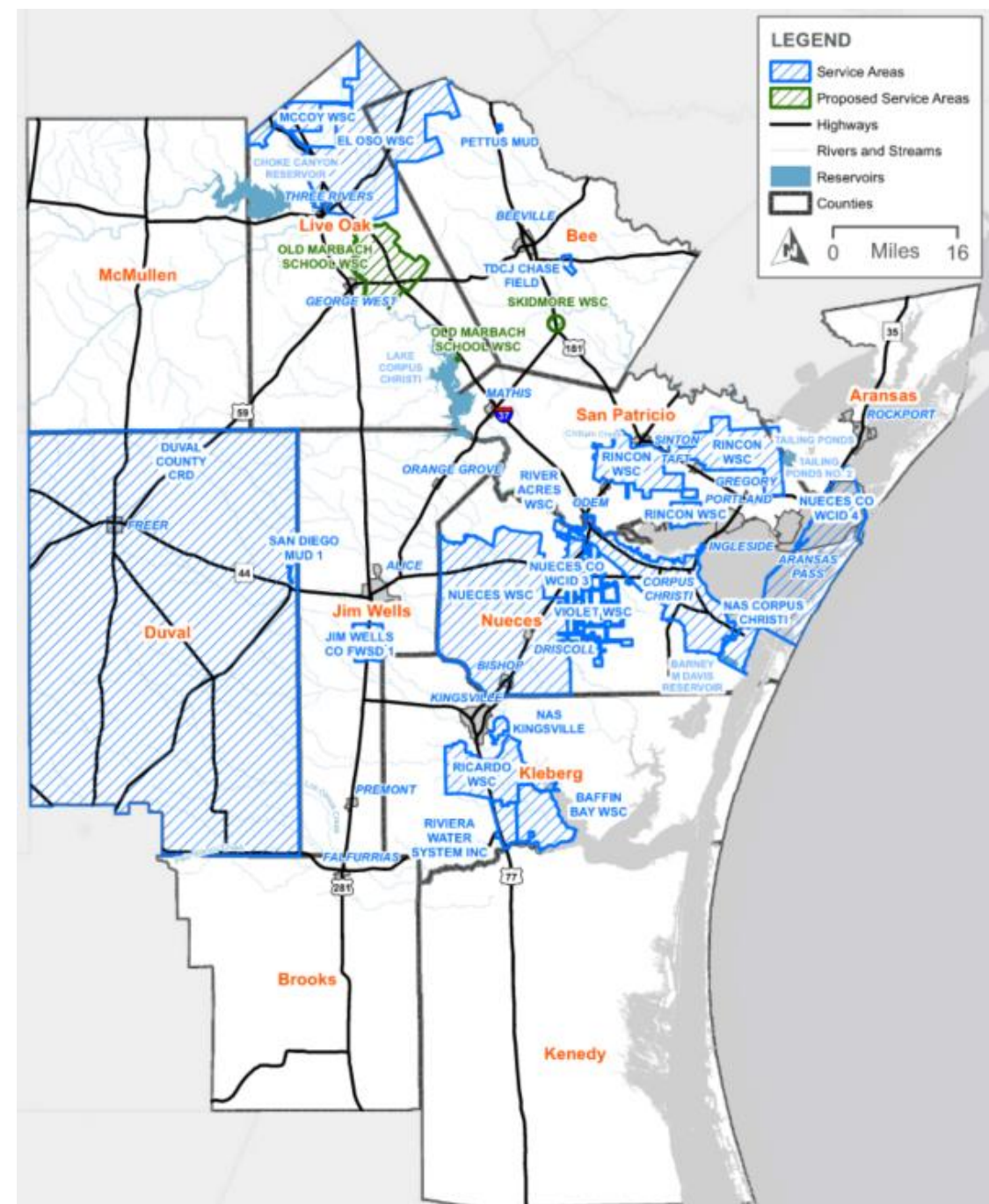
Nueces Basin

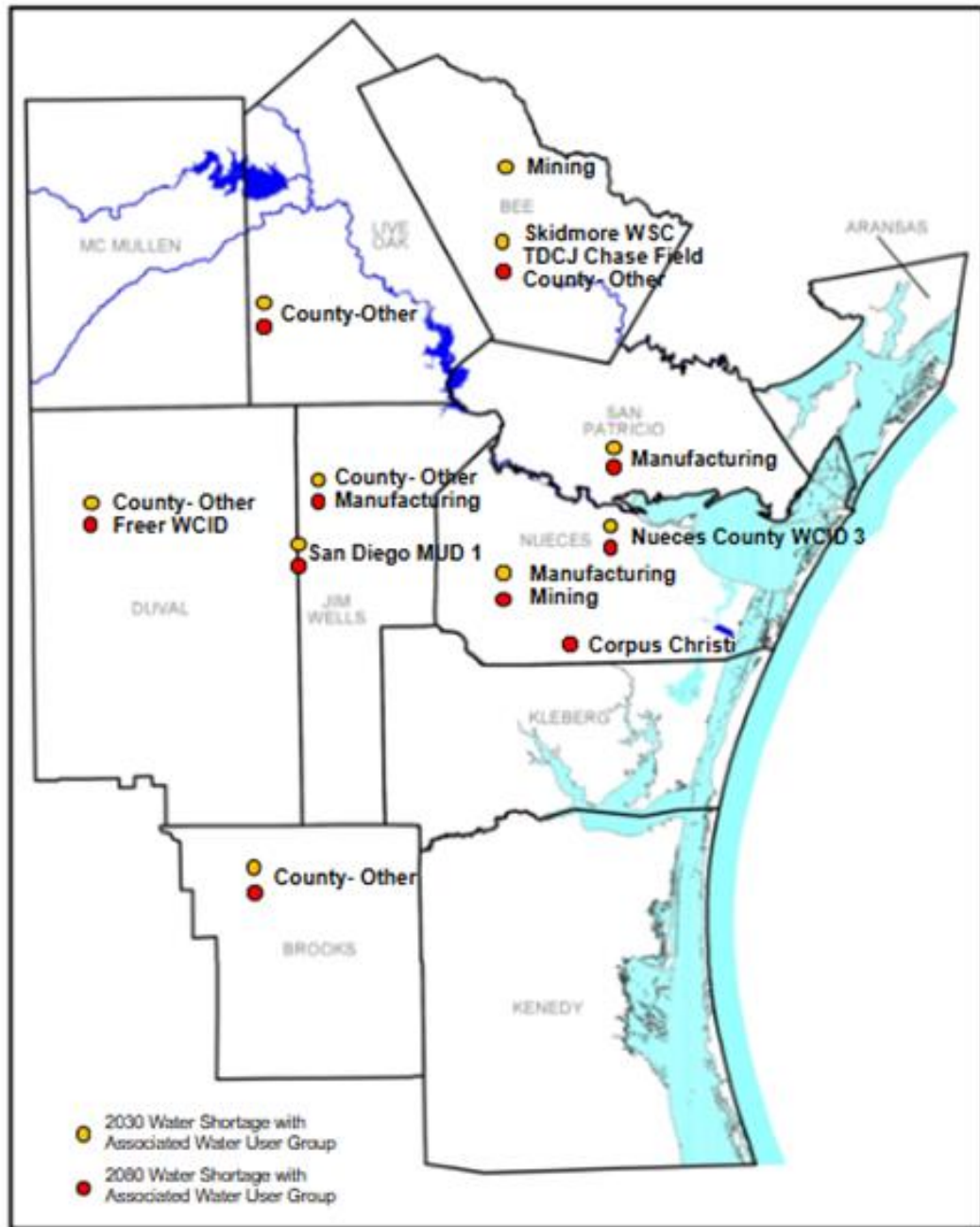
- Primarily located in Regions L and N
- Smaller areas in Regions J and M



2026 Coastal Bend (Region N) Regional Water Plan

- Draft Plan- March 2025
 - 11 counties
 - 6 categories of water users
 - 41 municipal water user groups; 11 county-other
 - 6 wholesale water providers (4 current; 2 future)
- Majority of water provided by Corpus Christi Regional Water Supply System
- 50-year plan to identify water needs and water supply strategies to meet needs (2030-2080)

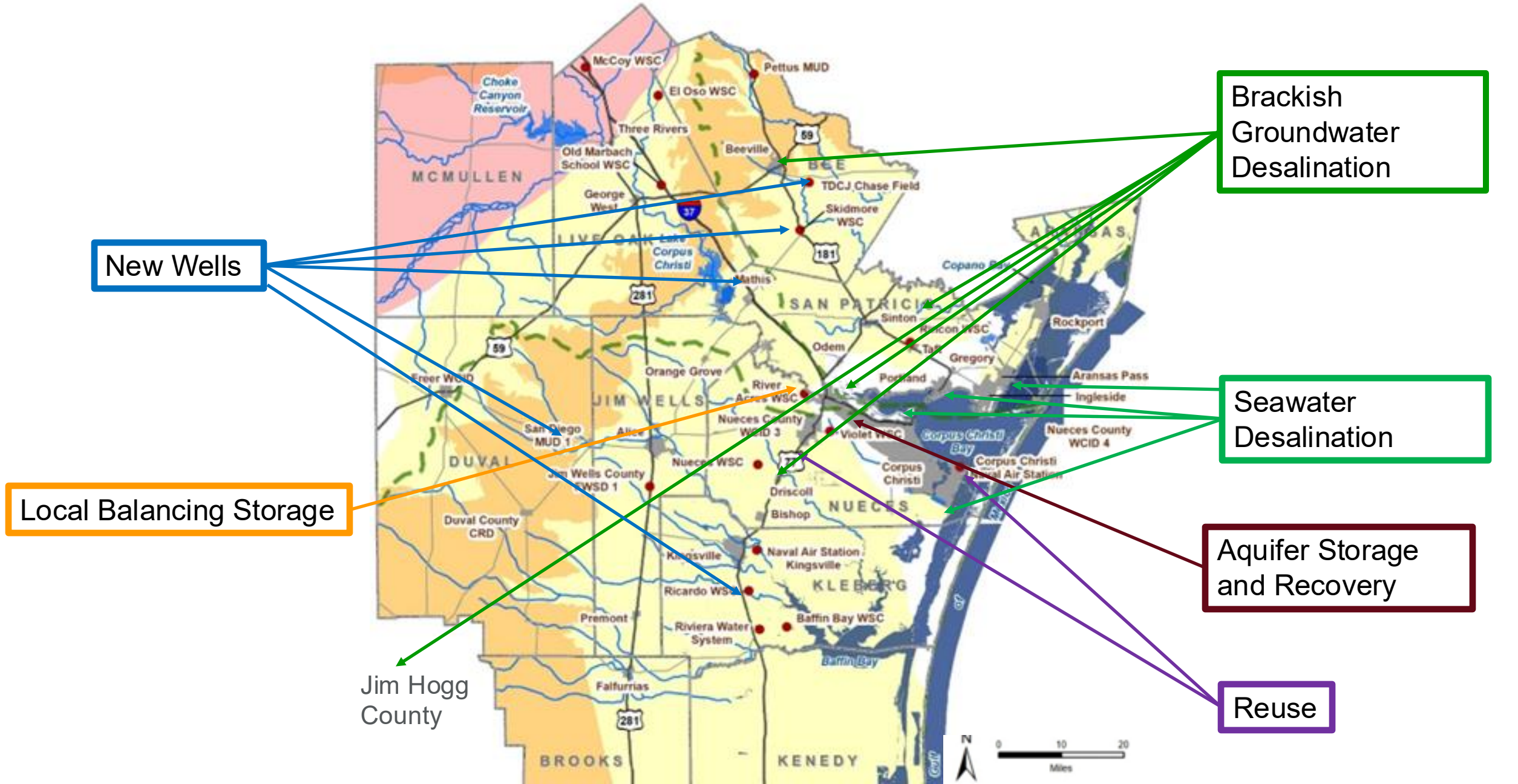




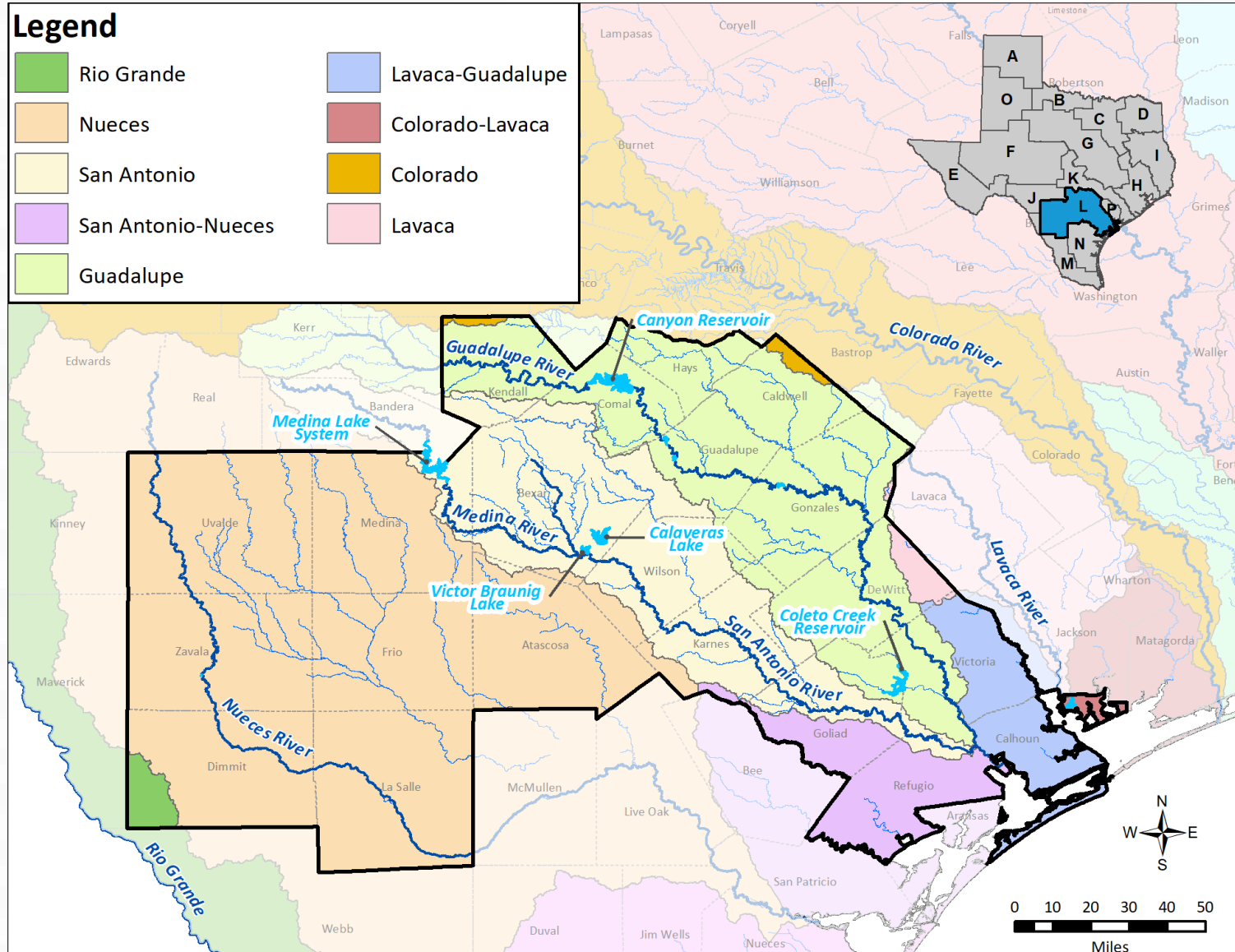
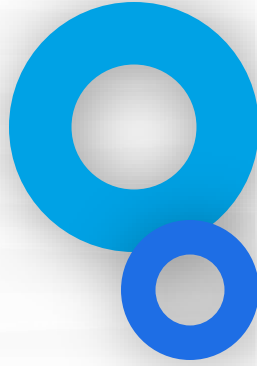
Region N Summary

- Likely new drought of record
 - Modeled hydrology 2934-2015
 - Safe yield of 75,000 acft-yr
- Major Future Water Supply Categories
 - Water Conservation
 - Reuse (3 projects)
 - Aquifer Storage and Recovery
 - Seawater Desal (5 projects)
 - Brackish GW Desal (5 projects)
 - Local Balancing Storage Reservoir
 - Groundwater Supplies
 - Regional Infrastructure Enhancements (3 projects)
 - Considered: Diversion to CCR, Sediment Removal

Recommended New Water Strategies



2026 South Central Texas (Region L) Regional Water Plan



- Draft Plan- March 2025
 - 21 counties
 - 6 categories of water users
 - 144 municipal water user groups; 21 county-other
- Population projected to grow by 93%
- 50-year plan to identify water needs and water supply strategies to meet needs (2030-2080)

Region L Water Management Strategies (WMSs) Evaluated

❖❖ *New WMS for 2026 Plan*

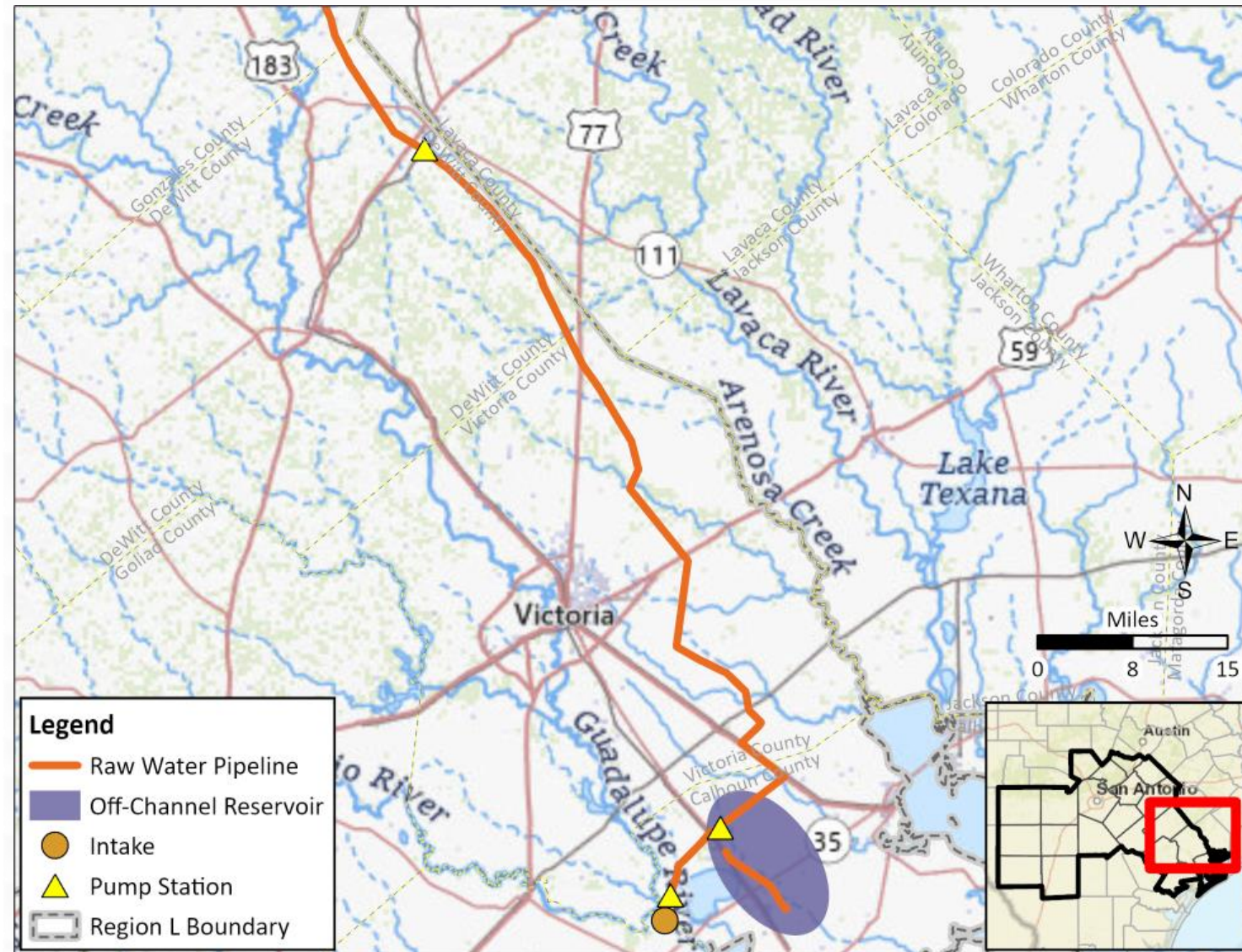
1. Advanced Water Conservation
- ❖❖ 2. *Non-municipal Water Conservation*
3. Drought Management
4. Edwards Transfers
5. Fresh Groundwater Development
6. Brackish Groundwater Development
7. Groundwater Conversions
8. Facilities Expansion
9. Recycled Water
- ❖❖ 10. *Brush Management*
- ❖❖ 11. *Rainwater Harvesting*
12. Surface Water Rights
13. Balancing Storage
14. Alliance Regional Water Authority (ARWA) Expanded Carrizo-Wilcox Project (Phase 2)
15. ARWA DPR Project (Phase 3)
16. Canyon Regional Water Authority (CRWA) Expanded Brackish Carrizo-Wilcox Project
17. CRWA Siesta Project
18. CRWA Wells Ranch 3 (Phase 2) Project
19. Cibolo Valley Local Government Corporation (CVLGC) Carrizo Project
20. Guadalupe-Blanco River Authority (GBRA) Lower Basin New Appropriation
- ❖❖ 21. *GBRA WaterSECURE*
- ❖❖ 22. *Medina County Regional Aquifer Storage and Recovery (ASR) Project*
23. New Braunfels Utilities (NBU) ASR Project
24. NBU Trinity Well Field Expansion
25. San Antonio Water System (SAWS) Expanded Local Carrizo Project
26. SAWS Expanded Brackish Groundwater Project
- ❖❖ 27. *SAWS Regional Wilcox Project*
28. Schertz-Seguin Local Government Corporation (SSLGC) Expanded Brackish Wilcox Project
29. SSLGC Expanded Carrizo Project
30. Victoria ASR Project
31. Victoria Groundwater-Surface Water Exchange
- ❖❖ 32. *Weather Modification*

WMSs 1-13 are “umbrella” strategies. WMSs 14-32 are large WMSs for Major Water Providers or for regional projects.

GBRA WaterSECURE

Envisioned Yield: 125,000 acft/yr

Implementation Decade: 2040



Spans the lower and middle portions of the Guadalupe River Basin and includes surface water diversions, aquifer storage and recovery (ASR), and brackish groundwater sources.

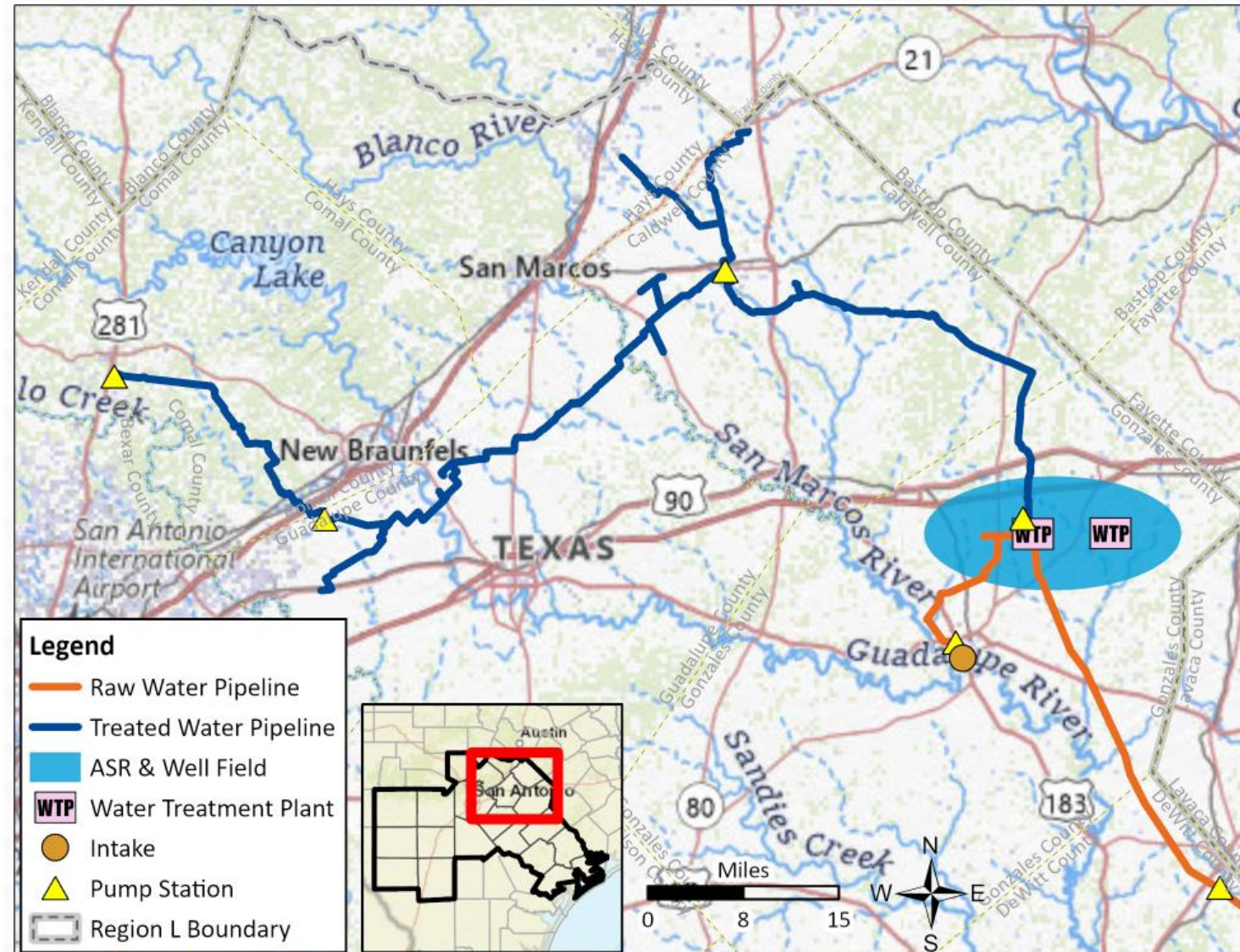
Lower Basin Components:

- Off-channel reservoir (60,000 acft; 2,562 acres)
- Intake and pump station
- Transmission pipelines (100 miles)
- Transmission pump stations

GBRA WaterSECURE

Envisioned Yield: 125,000 acft/yr

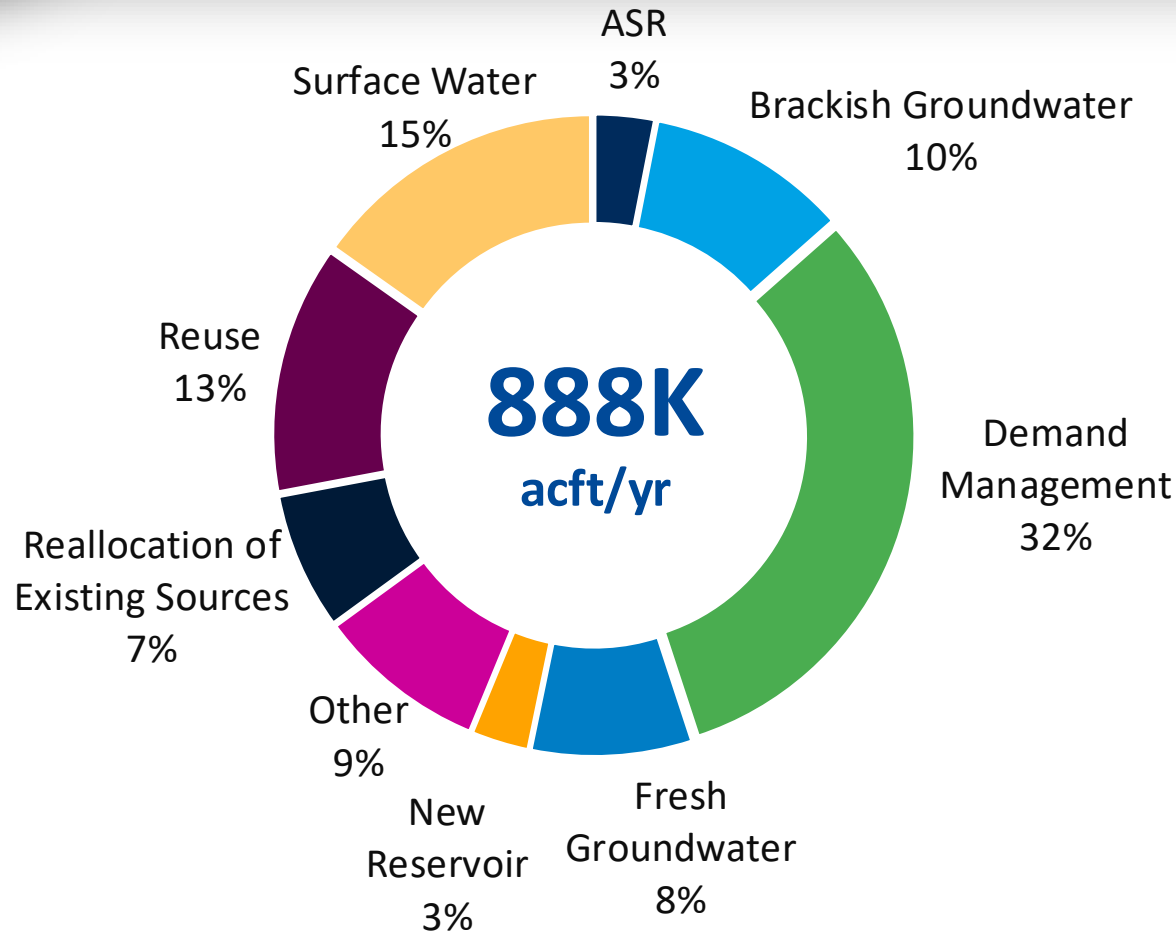
Implementation Decade: 2040



Mid-Basin Components:

- Intake and pump station
- Transmission pipelines (150 miles)
- Transmission pump stations
- ASR Well field in the Carrizo-Wilcox (24 ASR wells, pumps, pipelines)
- Brackish Well field in the Carrizo-Wilcox (12 withdrawal wells; 6 injection wells, pumps, pipelines)
- Two water treatment plants
 - 140 MGD conventional
 - 14 MGD brackish desalination

Recommended Water Management Strategies in 2080



WMS Type	2080 Yield (acft/yr)
Aquifer Storage and Recovery (ASR)	27,400
Brackish Groundwater	92,278
Demand Management	279,759
Fresh Groundwater	73,533
New Reservoir	26,500
Other	77,722
Reallocation of Existing Sources	62,710
Reuse	113,478
Surface Water	134,989
Total WMS Yield (acft/yr)	888,369

Capital Costs of Recommended WMS Projects: \$18.7 Billion

Schedule

Region N

- Public comment period-
 - Thru July 14, 2025. Written comments to tpruski@nueces-ra.org
- Region N scheduled meetings-
 - June 19, 2025
 - September 11, 2025

Region L

- Public comment period-
 - Thru July 20, 2025. Written comments to ccastillo@sariverauthority.org
- Region L scheduled meetings-
 - August 28, 2025
 - October 2, 2025

Final Adopted Regional Water Plan due to TWDB: October 20, 2025

**Important~
Regional
Water
Planning
Resources**

**Read the draft 2026 Regional Water Plans
([https://www.twdb.texas.gov/waterplanning/
rwp/plans/2026/index.asp](https://www.twdb.texas.gov/waterplanning/rwp/plans/2026/index.asp))**

**Region L Website
(<https://www.regionltexas.org/>)**

**Region N Website
(<https://www.coastalbend-rwpg.org/>)**