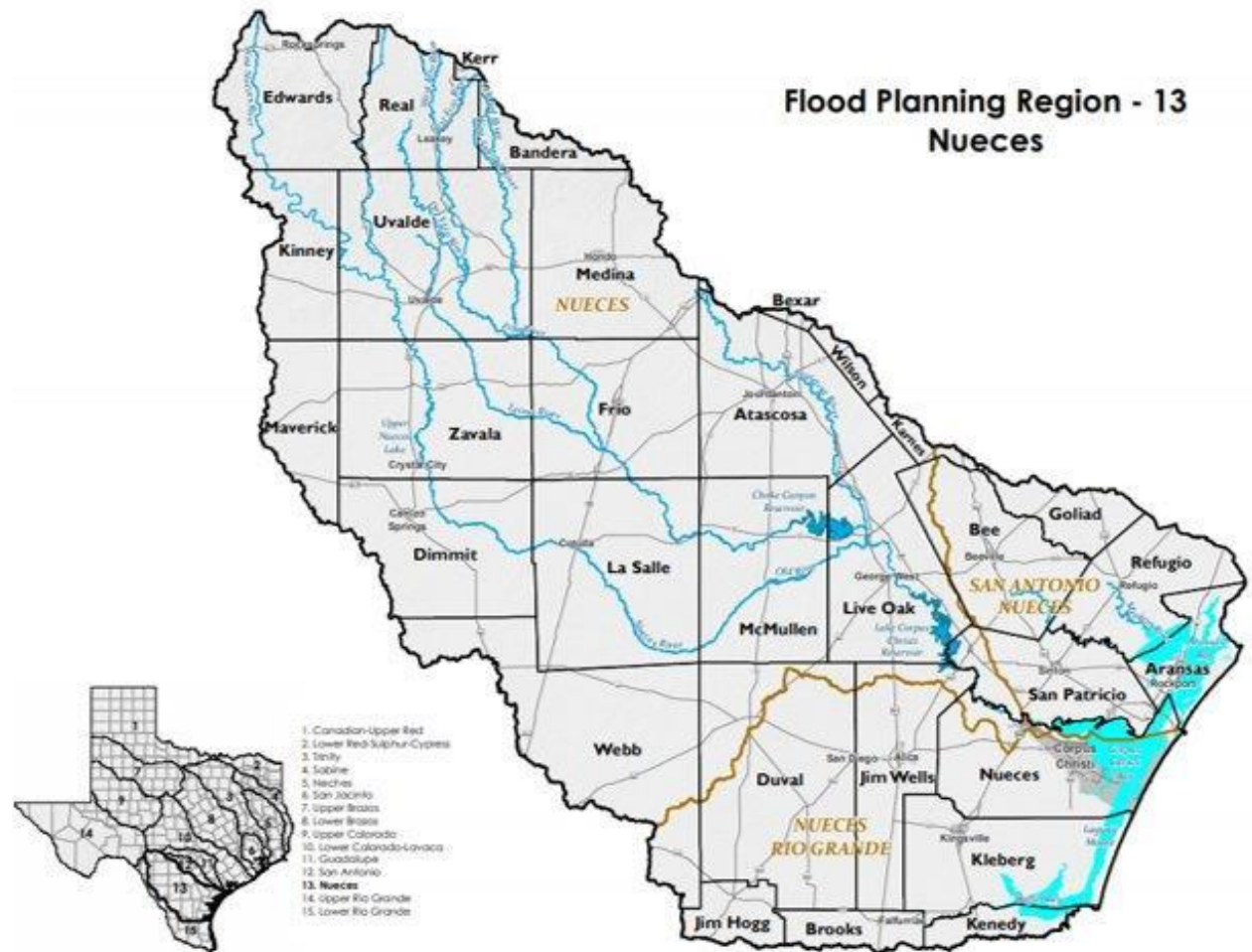




Region 13 Nueces Flood Planning Group Meeting

McMullen County EOC
306 Live Oak Street, Tilden,
Texas

August 25, 2025



Agenda Item 8 – Subcommittee Recommendation on Flood Management Practices and Goals

- Subcommittee formed by Region 13 RFPG on May 12, 2025
- Representation across the Nueces Basin
- 18 volunteered to serve on the subcommittee. Represents 15 of the 31 counties in Region 13
- Virtual call held on July 30, 2025 to review standards and goals from first cycle and updates
- Major themes from subcommittee input
 - Need for Early Flood Warning Systems
 - Measurable and Quantifiable 10/30 Year Goals
 - Deeper Regional Engagement and Cooperation to Share/Exchange Information
- Subcommittee meeting notes and draft flood standards and goals sent August 1, 2025 for review
- Distributed to Region 13 on August 15, 2025
- Uploaded to Region 13 website

[Home - Nueces Regional Flood Planning Group \(Region 13\)](#)

Action Item: Consider Region 13 subcommittee flood management practices and goals for inclusion in the 2028 Nueces Region 13 Regional Flood Plan

Last Name	First Name	County	Organization	FMPs and Future Goals
Brawner	Pat	Medina	Medina County	✓
Mora	Rutilio "Rudy"	Kleberg	City of Kingsville	✓
Vargas	Priscilla	Jim Wells	City of Premont	✓
Lara	Richard Y	Uvalde	City of Uvalde	✓
Wells	Dale	San Patricio	City of Ingleside	✓
Van Curan	Britini	Atascosa	Atascosa County	✓
Kallio	Ray	Frio	-	✓
Rodriguez	Rogelio	Dimmit	Water Finance Exchange (Carrizo Springs)	✓
Luna	Sandra	La Salle	City of Cotulla	✓
Ramirez	Javier	All	Nueces River Authority	✓
Rooke	Andy	Refugio + Others	Region 13 Executive Committee	✓
Villasenor	Gabriel	Maverick	Maverick County	✓
Pimentel	Juan	Nueces	Public Works	✓
Reyna	Jennifer	Bee	Bee County	✓
Benson	John	Bee	Beeville	✓
Comeaux	Katherine	Aransas	Aransas County	✓
McCulloch	Kerry	Atascosa	City of Poteet	✓
Reilly	Taylor	Uvalde		✓

Proposed Process for Identifying Potential Flood Management Evaluations, Strategies, and Projects for the 2028 Nueces Regional Flood Plan

The process outlined below for identifying and selecting FMEs, FMSs, and FMPs was developed using framework identified by a Region 13 subcommittee¹ during the first cycle in developing the 2023 Nueces (Region 13) Flood Plan. In spring 2025, the process was updated and considered at the Region 13 open meeting on May 12, 2025. No comments were received. Pursuant to the 14-day posting requirement from TWDB, the proposed process below will be considered for adoption at the Region 13 Regional Flood Planning Group meeting on August 25, 2025 with public input.

- 1) The Nueces RFPG solicited public and stakeholder comments related to identifying potential FMEs, FMS, and FMPs, as follows:
 - Review first cycle FMX and new potential FMXs from stakeholder engagement.
 - Stakeholder input from public comment map on flood-prone areas, as posted on the Nueces River Authority's Region 13 website. [Home - Nueces Regional Flood Planning Group \(Region 13\) \(nueces-rfpg.org\)](https://nueces-rfpg.org). The comment map was open from December 2024 through July 2025. As of August 8, 2025, 290 comments on flood-prone areas in the Nueces Basin were received which include 151 comments from the first cycle and 139 comments from the second (2028 Plan) cycle.
 - A survey requesting information on proposed/ongoing flood projects was distributed on March 5, 2025 to over 80 floodplain administrators and stakeholders in the Nueces Basin. The survey was open from March 5 to June 30, 2025 and received 39 responses (or roughly 50%).
 - Direct outreach included four sub-regional meetings held October 18 through October 21, 2024, personal emails to floodplain administrators, and follow-up phone calls to selected municipalities to gather information on local and regional flood plans in the Nueces Basin and flood planning needs.
- 2) Public and stakeholder comments related to ongoing/proposed projects and flood-prone areas will be reviewed to identify project needs and data gaps.
- 3) The Nueces RFPG discussed a proposed process of identifying feasible and infeasible FMPs and FMSs at the Region 13 Regional Flood Planning Group regular public meeting on May 12, 2025.
- 4) The Nueces RFPG will receive public comment on the process at the regular public meeting on August 25, 2025.
- 5) Compile a list of potential FMEs and potentially feasible FMPs and FMSs and present at Region 13 meetings on August 25, 2025 and November 10, 2025 including infeasible solutions and present as a draft in the Technical Memorandum due to TWDB on January 6, 2026.
- 6) Revisit the process by which potentially feasible FMS are selected for evaluation in the 2028 Nueces (Region 13) Regional Flood Plan and update (as needed) after submittal of the Technical Memorandum for inclusion in the Draft and Final 2028 Regional Flood Plan.
- 7) The process by which potentially feasible FMS are selected for evaluation in the 2028 Nueces Regional Flood Plan will be revisited and updated (if necessary) after submittal of the technical memorandum. A description of process will be included in draft and final 2028 Nueces (Region 13) Regional Flood Plans.

¹ The Region 13 subcommittee consisted of Debra Barrett, Lj Francis, Kendria Ray, and Lauren Williams. This subcommittee met on August 23, 2022 to develop the process, which was then adopted at the Region 13 meeting on September 27, 2022 with public input.

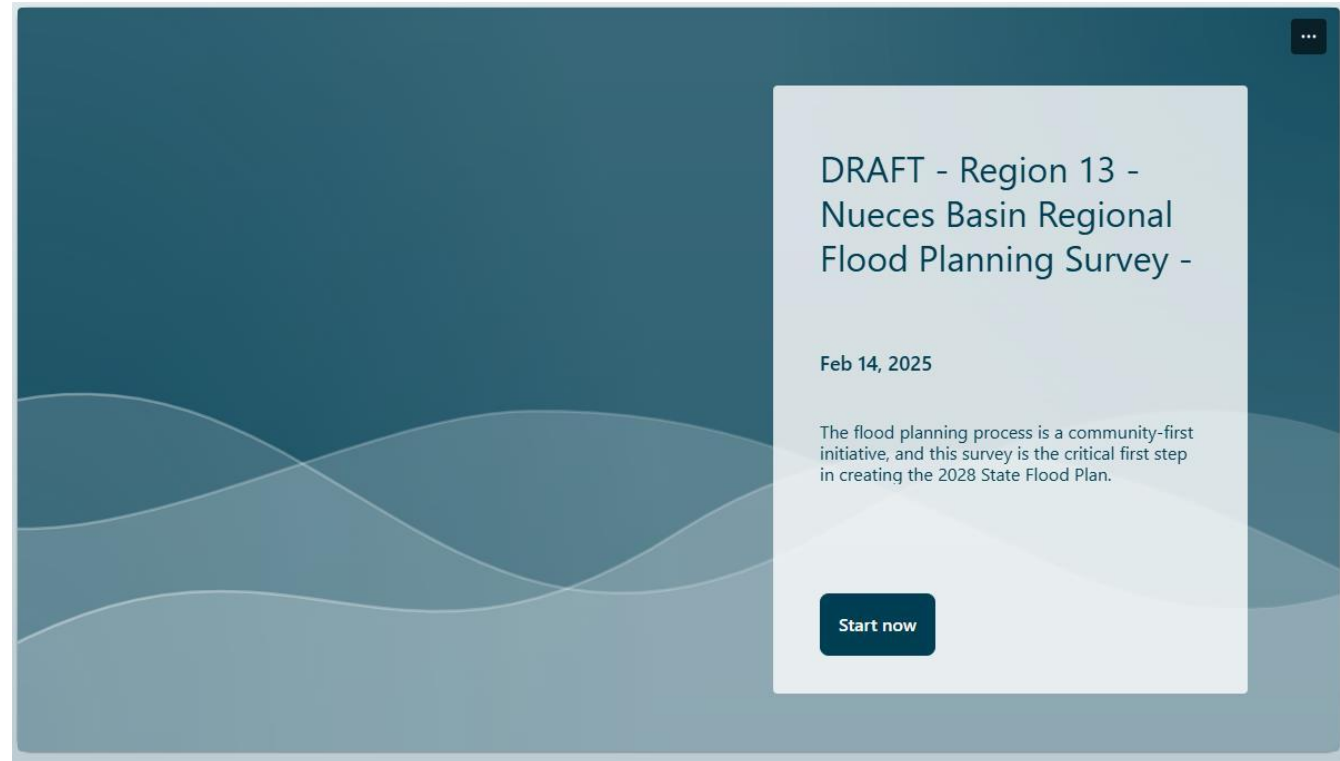
Agenda Item 9 – Process for Region 13 to Identify Potentially Feasible and Infeasible FMXs

- Discussed at Region 13 May 12, 2025 Meeting
- Provided to Region 13 RFPG Members in packet materials
- Posted on Region 13 website [Home - Nueces Regional Flood Planning Group \(Region 13\)](https://nueces-rfpg.org) for public review and comment in accordance with TWDB guidance
- Send written comments to Travis (tpruski@nueces-ra.org) by September 5, 2025

Action Item: Consider approval of Region 13 process to identify potentially feasible and infeasible FMXs

Agenda Item 10 – Status Update on Task 1 – Survey Update

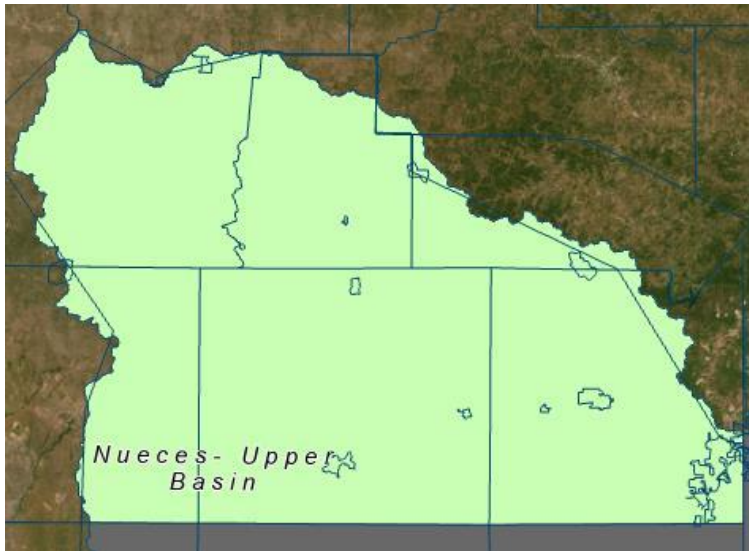
- *Still encourage stakeholders to complete
- 24/89 (43%) Responses Basin wide
 - Upper Basin: 7/15 (47%)
 - Upper- Mid Basin: 7/14 (50%)
 - Lower-Mid Basin: 9/25 (36%)
 - Lower Basin: 15/35 (43%)



[2025.02.10 Region 13 Cycle 2 Survey Hyperlink.url](#)

Upper Basin Survey Results

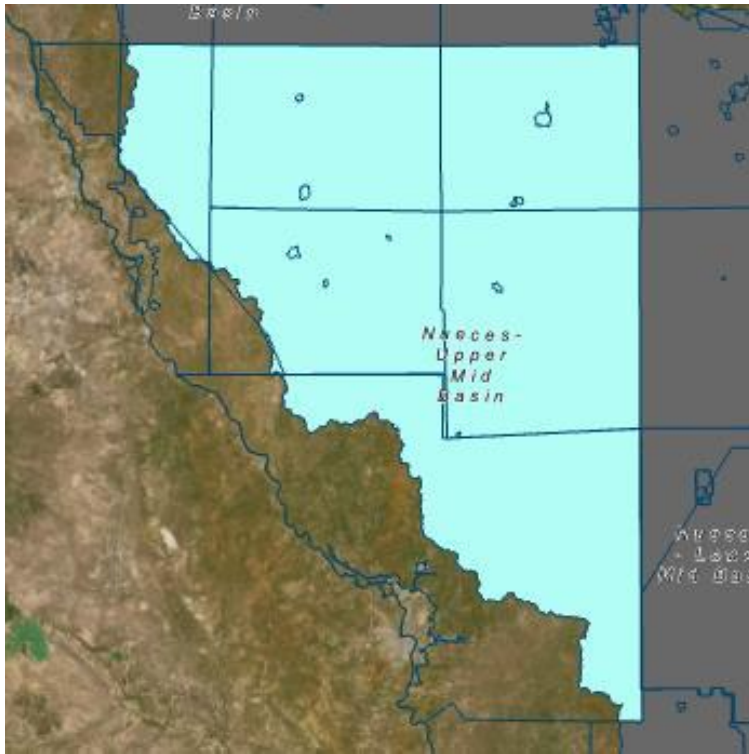
(as of 8/14/2025)



Entity Name	Entity Type	Survey Complete
Bandera	County	Yes
Camp Wood	Municipality	No
Devine	Municipality	No
Edwards	County	Yes
Hondo	Municipality	No
Kerr	County	No
Kinney	County	Yes
Leakey	Municipality	No
Medina	County	Yes
Natalia	Municipality	No
Real	County	Yes
Rocksprings	Municipality	No
Sabinal	Municipality	No
Uvalde	Municipality	Yes
Uvalde	County	Yes

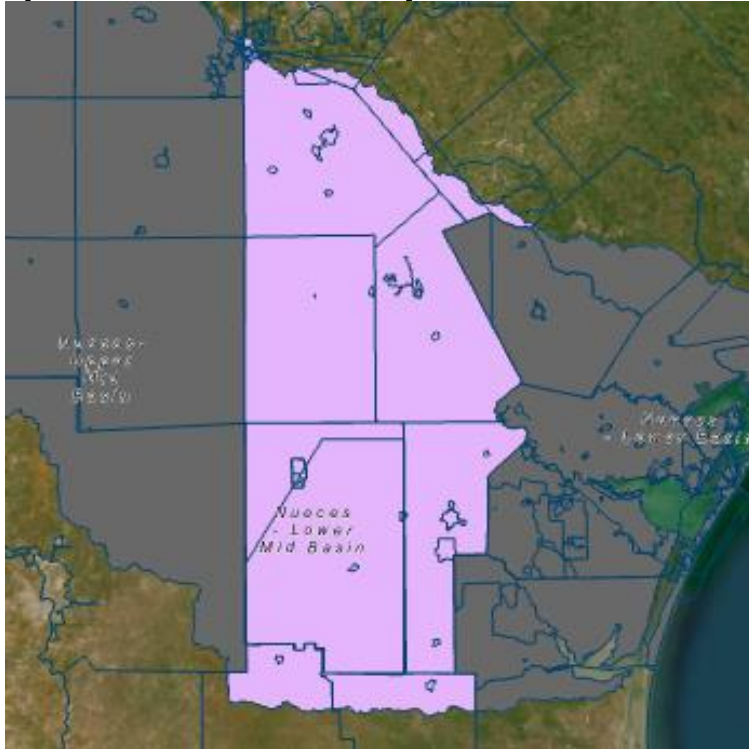
Upper-Mid Basin Survey Results

(as of 8/14/2025)



Entity Name	Entity Type	Survey Complete
Asherton	Municipality	No
Big Wells	Municipality	Yes
Carrizo Springs	Municipality	Yes
Cotulla	Municipality	Yes
Crystal City	Municipality	Yes
Dilley	Municipality	No
Dimmit	County	No
Encinal	Municipality	No
Frio	County	Yes
La Salle	County	Yes
Maverick	County	Yes
Pearsall	Municipality	No
Webb	County	No
Zavala	County	No

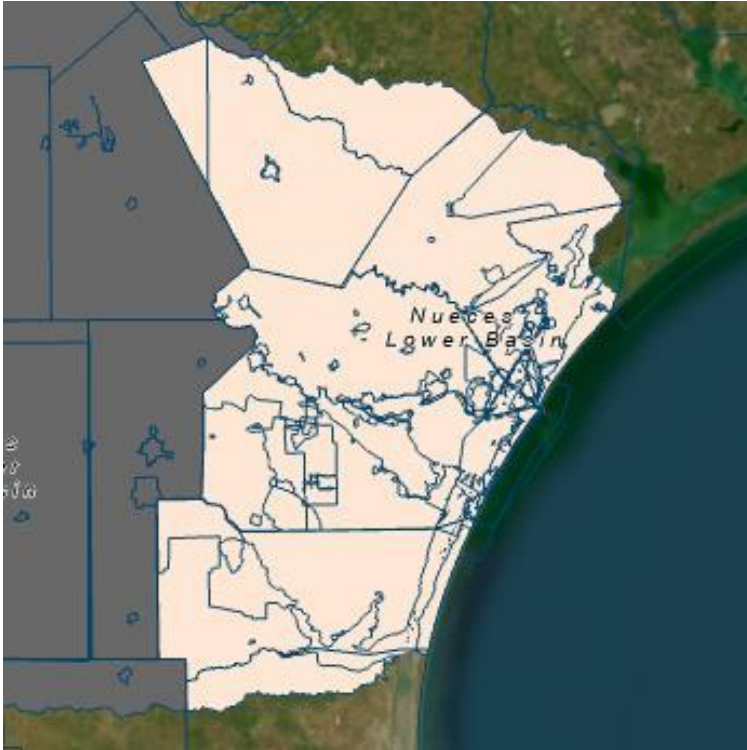
Lower-Mid Basin Survey Results (as of 8/14/2025)



Entity Name	Entity Type	Survey Complete
Alice	Municipality	No
Atascosa	County	Yes
Benavides	Municipality	No
Bexar	County	Yes
Brooks	County	No
Charlotte	Municipality	No
Christine	Municipality	No
Duval	County	No
Falfurrias	Municipality	No
Freer	Municipality	No
George West	Municipality	No
Jim Hogg	County	No
Jim Wells	County	No
Jourdanton	Municipality	Yes
Karnes	County	Yes
Live Oak	County	Yes
Lytle	Municipality	No
McMullen	County	Yes
Orange Grove	Municipality	No
Pleasanton	Municipality	No
Poteet	Municipality	Yes
Premont	Municipality	Yes
San Diego	Municipality	No
Three Rivers	Municipality	No
Wilson	County	Yes

Lower Basin Survey Results

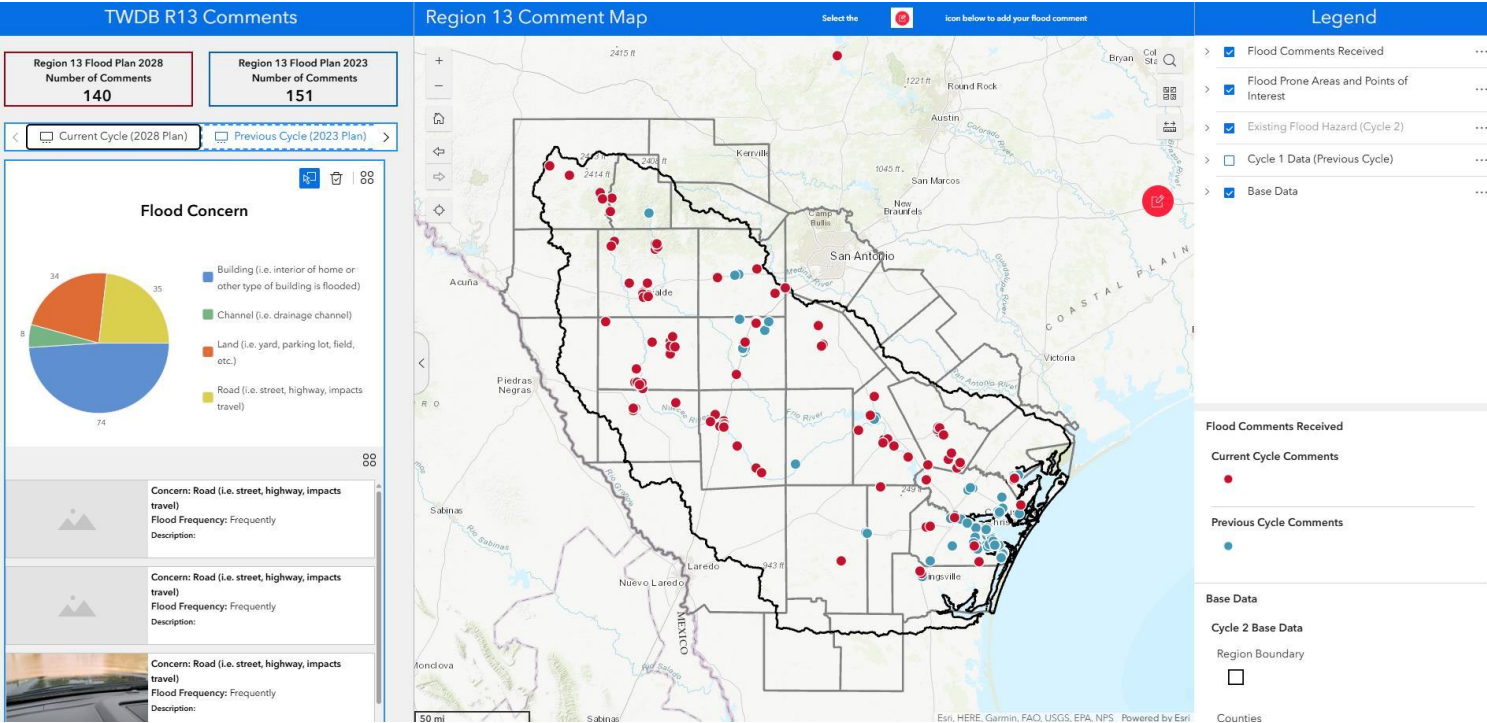
(as of 8/14/2025)



Entity Name	Entity Type	Survey Complete
Agua Dulce	Municipality	No
Aransas	County	Yes
Aransas Pass	Municipality	Yes
Banquete	Municipality	No
Bayside	Municipality	No
Bee	County	Yes
Beeville	Municipality	Yes
Bishop	Municipality	No
Corpus Christi	Municipality	Yes
Driscoll	Municipality	No
Fulton	Municipality	Yes
Goliad	County	No
Gregory	Municipality	No
Ingleside	Municipality	Yes
Ingleside on the Bay	Municipality	Yes
Kenedy	County	No
Kingsville	Municipality	Yes
Kleberg	County	No
Lake City	Municipality	No
Lakeside	Municipality	No
Mathis	Municipality	Yes
Nueces	County	Yes
Odem	Municipality	No
Petronilla	Municipality	No
Port Aransas	Municipality	Yes
Portland	Municipality	Yes
Refugio	Municipality	No
Refugio	County	No
Robstown	Municipality	No
Rockport	Municipality	Yes
San Patricio	County	Yes
San Patricio	Municipality	No
Sinton	Municipality	No
Taft	Municipality	No
Woodsboro	Municipality	No

Agenda Item 10 – Status Update on Task 1 – Flood prone area update

- As of August 14, 140 comments provided this cycle



[TWDB Region 13 Comment Map](#)



Agenda Item 10 – Status Update on Task 1 – Planning Area Description

Additional data collection

- Texas Campsite and RV park research
- Historic newspaper deep dive
- HMAP/DMPs from 21 Counties

UVALDE COUNTY HAZARD MITIGATION ACTION PLAN UPDATE

2025 DRAFT

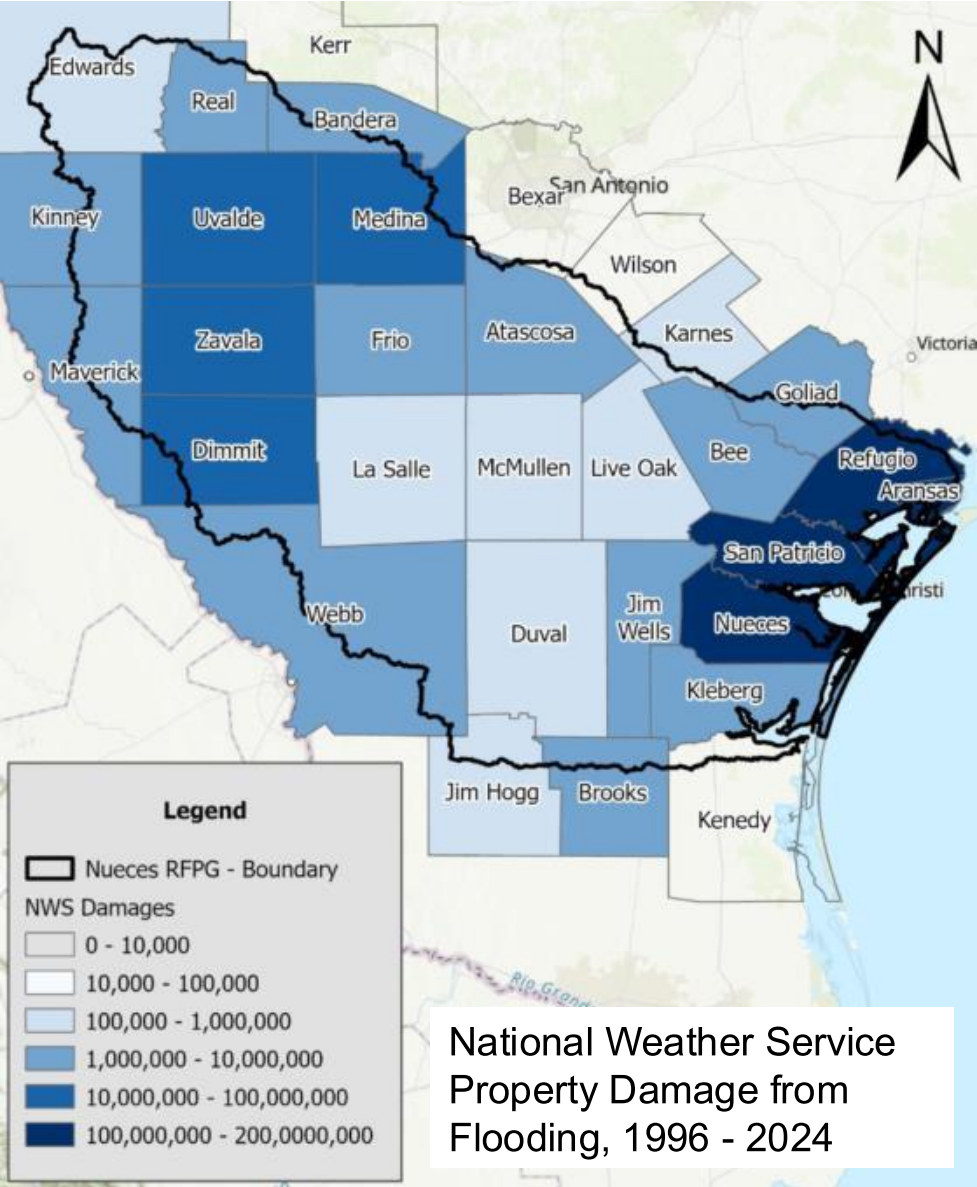
Mitigating Risk for a Safe, Secure, Sustainable Future



Agenda Item 10 – Status Update on Task 1

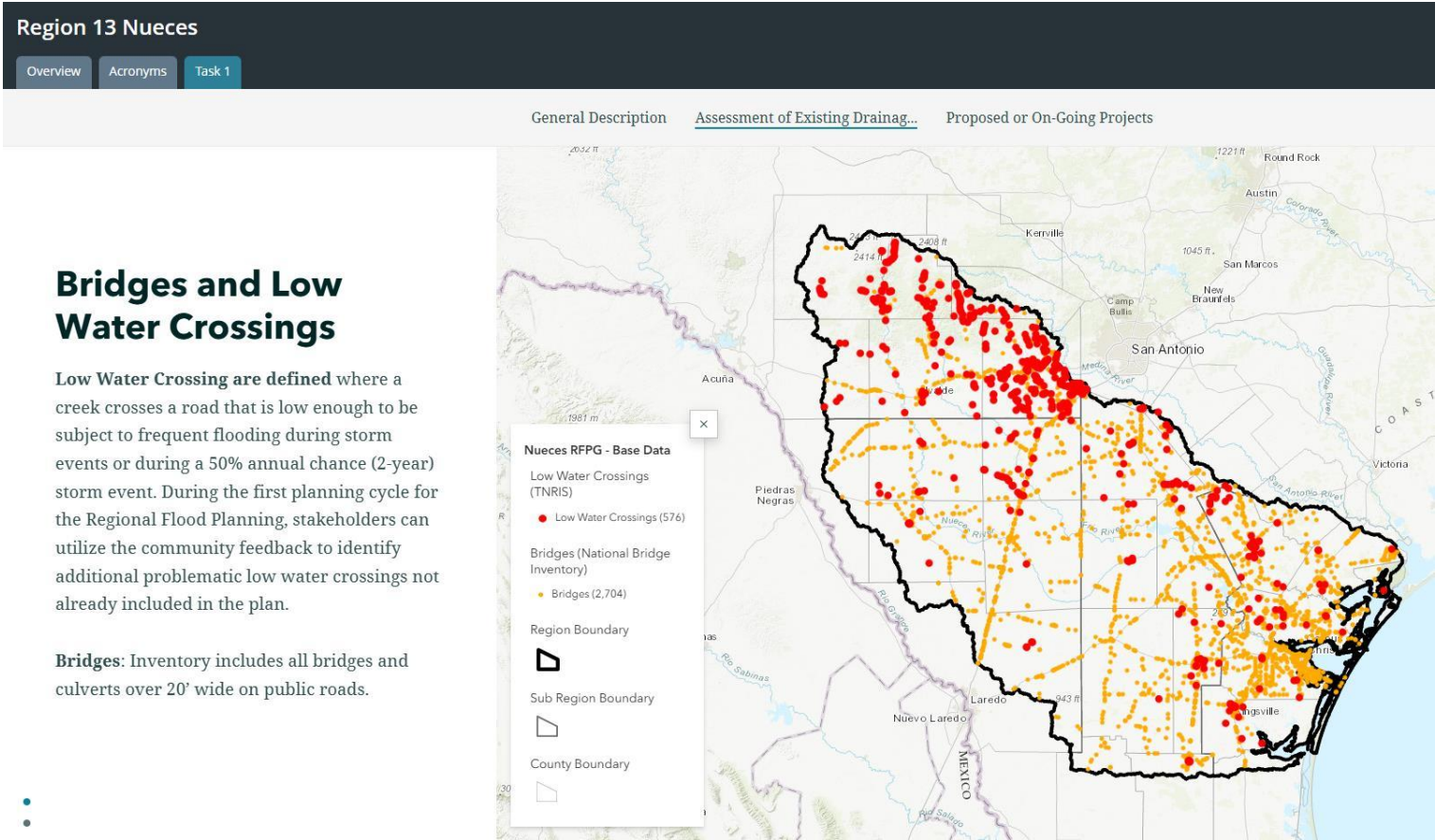
– Planning Area Description

- Key historical flood events
 - USGS Historical Flood Summary Data
 - List of Historic Flood Events
 - NWS 1996-2024 Flood Losses for Basin
 - Damages: \$4.9B for basin
 - Injuries: 377
 - Deaths: 30
 - FEMA Reported Damages 1996-2024 for Basin
 - Damages: \$276M
 - July 4th Floods



Agenda Item 10 – Status Update on Task 1 – Planning Area Description

- Major Flood Infrastructure
- Assessment
 - Functional: Serving its intended purpose
 - Non-Functional: Not serving its intended purpose
 - Deficient: In poor structural condition and needs replacement, restoration, or rehabilitation
- Major categories
 - Dams, reservoirs, levees
 - Bridges and Low Water Crossings
 - Stormwater management systems (i.e. storm drains, tunnels, pump stations, and detention ponds)
 - Coastal infrastructure



Agenda Item 10 – Status Update on Task 1 – Planning Area Description

- Proposed and On-Going Projects (already funded)
 - Approximately 130 collected to date
 - 16 new GLO proposed projects
 - 22 upgraded from past cycle FMXs
- Previous flood-related studies
 - 14 identified 1st cycle
 - Added 24 more including HMAPs

Previous and Relevant Flood Studies – ADDED DURING CYCLE 2
San Patricio County Drainage Master Plan
Interagency Flood Risk Management (InFRM) Watershed Hydrology Assessment for the Nueces River Basin
Kinney County Multi-Hazard Mitigation Plan
Tri-County Drainage Master Plan
County of Brooks, Texas Hazard Mitigation Action Plan
Edwards County Hazard Mitigation Action Plan Update
Maverick County Hazard Mitigation Action Plan Update
Uvalde County Hazard Mitigation Action Plan Update
Wilson County Hazard Mitigation Action Plan Update
Zavala County Hazard Mitigation Action Plan Update
RBFS West Region Modeling program Phases 1-3
Live Oak County Drainage Study
Bandera County Hazard Mitigation Plan
Goliad County Hazard Mitigation Action Plan
Kleberg county Multi-Hazard Mitigation Plan
Nueces County Hazard Mitigation Action Plan Update
Bee County Multi-Hazard Mitigation Plan
CITY OF CORPUS CHRISTI Stormwater Master Plan, Land Use Assumptions, and Capital Improvements Plan
Refugio County Hazard Mitigation Action Plan
Aransas County Texas Multi-Jurisdictional Hazard Mitigation Action Plan
CITY OF KINGSVILLE –DRAINAGE MASTER PLAN AMENDMENT
Karnes County Multi-jurisdictional Wilson County Multi-jurisdictional Hazard Mitigation Action Plan
Medina County Multi-Hazard Mitigation Plan
Emergency Management Plan - Bexar Co and Certain Municipalities

Agenda Item 11 – Status Update on Task 2 – Flood Hazard Mapping and Receive Public Input

← ↻ 🏠 <https://nueces-rfpg.org>



[Home](#) [2022 Final Nueces Regional Flood Plan](#) [County Maps](#) [About Us](#) [Members](#) [Meeting](#) [RFQ and Vacancy Notice](#) [Contact Us](#) [Agency Links](#)

- Initial flood hazard map had been generated for the 2028 Regional Flood Plan
- A link is provided on the flood plan website to view and mark locations of any flood risk that may not have already been identified
- Accepting feedback through September 5, 2025

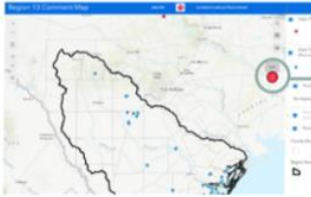
Region 13 Interactive Flood Hazard Map

Public feedback is requested to currently identified by the RFPG. Click on the button below to view existing flood hazards, updated current floodplain extents (10-, 100-, and 500-year), and public comments received to date. Zoom in for detailed layers that are greyed out. Some layers require a few minutes to load. Please review and use the red button on the interactive map to add comments for flood risk that have not already been reported. Additional flood risk information received by September 5, 2025 will be added to the RFPG map.

[Click here to comment on your local flood issues](#)

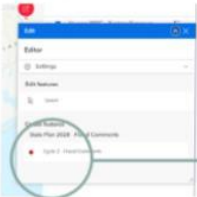
Contribute to the Region 13 Comment Map

Step 1: Open the Comment Map editor



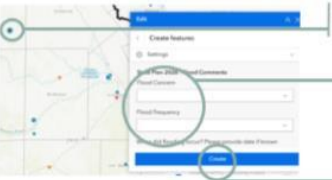
Select the "Edit" menu

Step 2: Indicate Flood Comments (flood details) or New Feature (draw existing flood conditions)



Click to add a new comment or feature

Step 3: Identify, define, and submit your comment or feature



Click on the map to indicate marker location

Fill in relevant fields with appropriate information - scroll for more options or to upload files

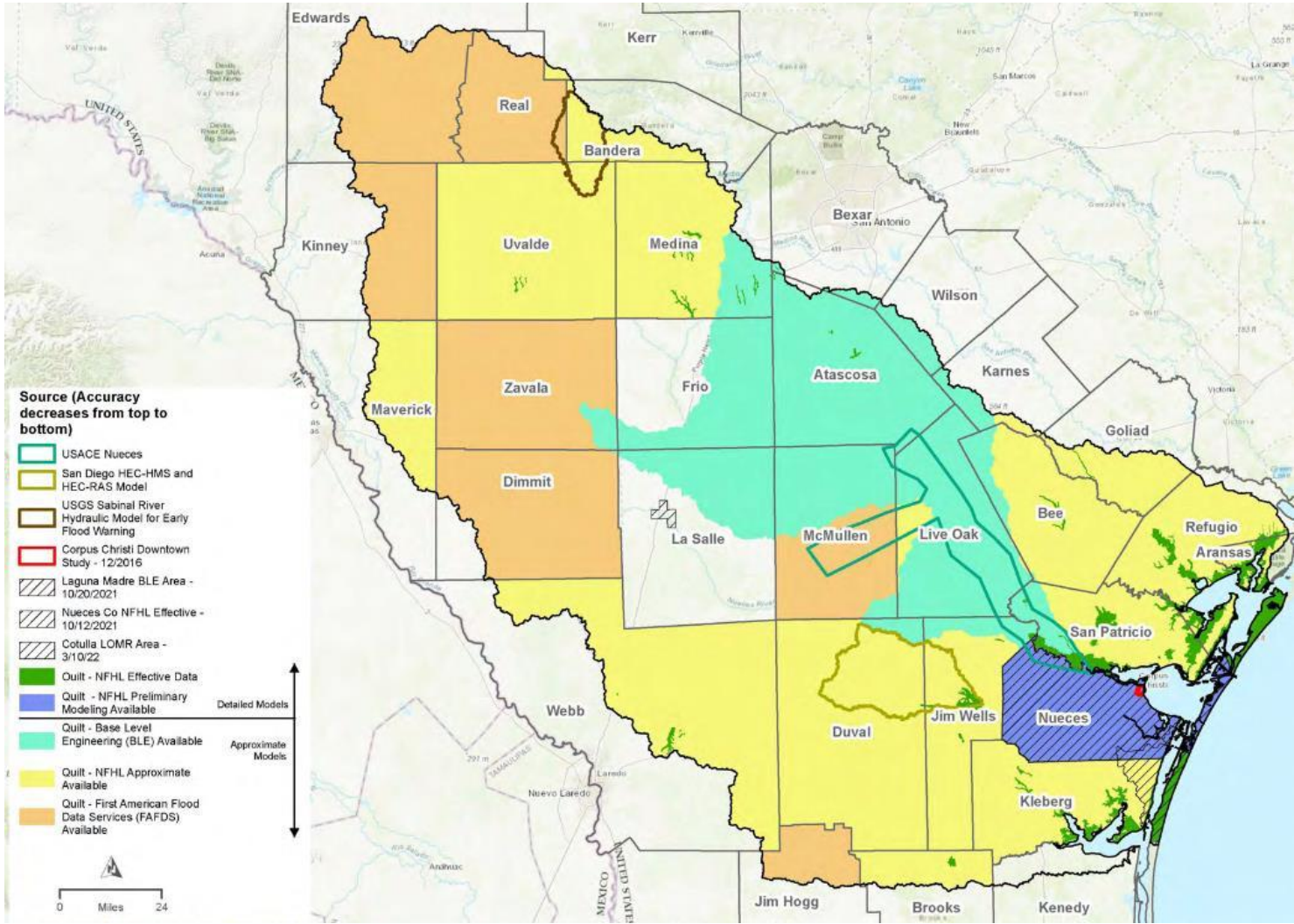
Confirm your data to add it to the Comment Map

Agenda Item 11 – Status Update on Task 2 – Flood Hazard Mapping and Receive Public Input

Available Data

1st Cycle Recap

- Map of Available Detailed and Approximate Models
 - Limited detailed models
 - Limited BLE coverage

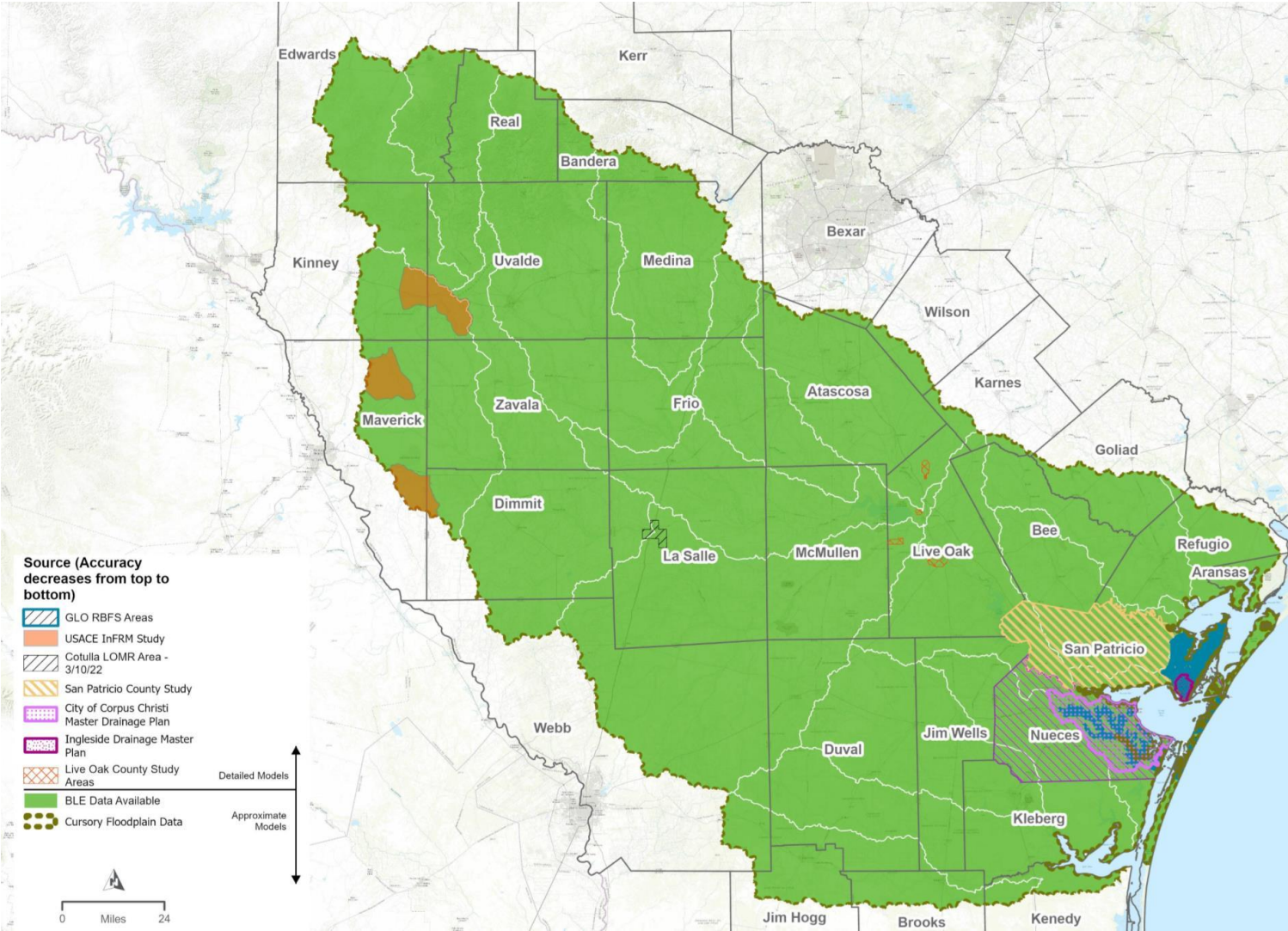


Agenda Item 11 – Status Update on Task 2 – Flood Hazard Mapping and Receive Public Input

Available Data

2nd Cycle

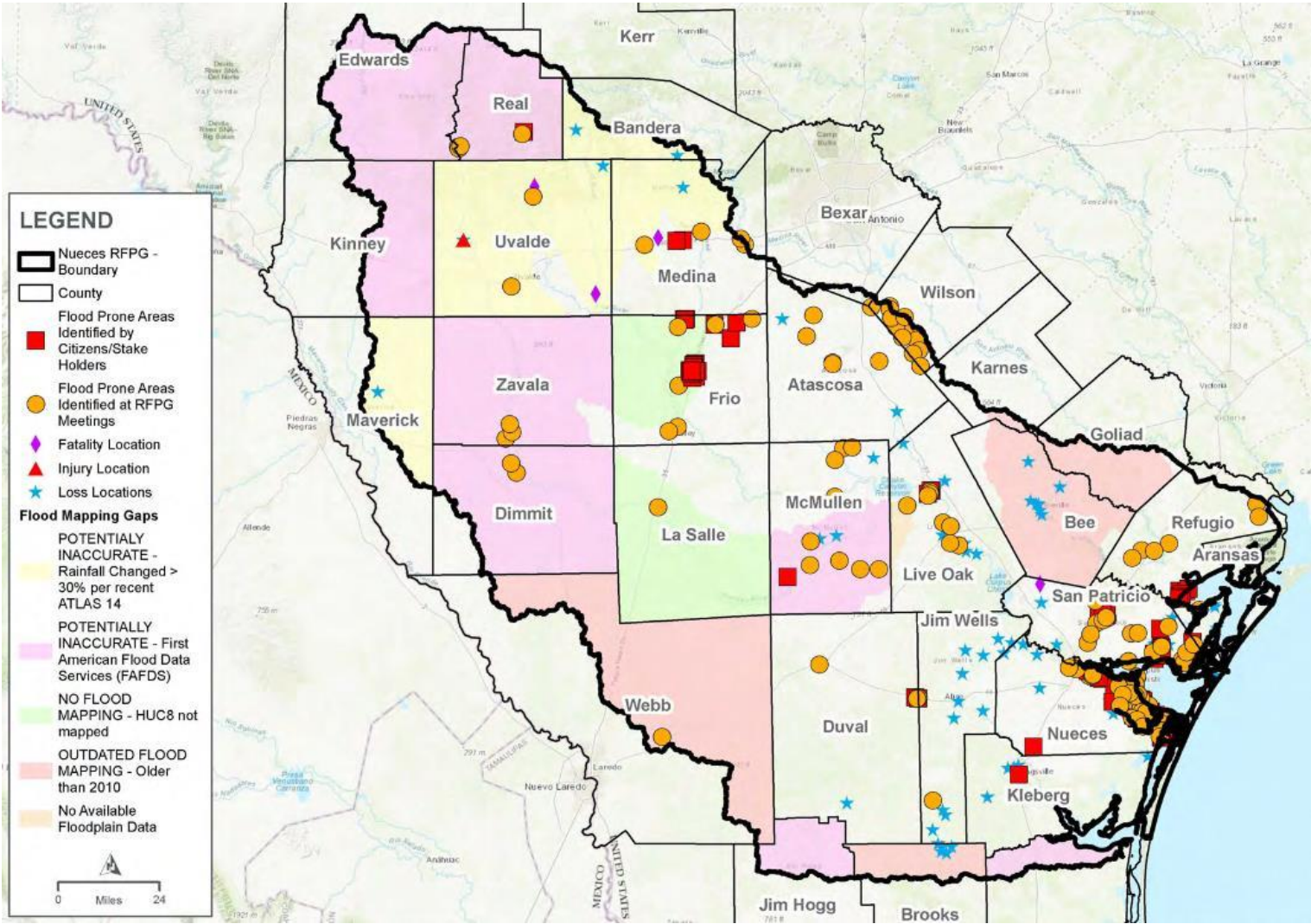
- Map of Available Detailed and Approximate Models
 - Additional local studies/detailed models
 - Full BLE coverage



Agenda Item 11 – Status Update on Task 2 – Flood Hazard Mapping and Receive Public Input

Flood Mapping Gaps 1st Cycle Recap

- Gaps in Inundation Boundary Mapping and Known Flood Prone Areas
- Large gaps
 - No data
 - Inaccurate
 - Outdated

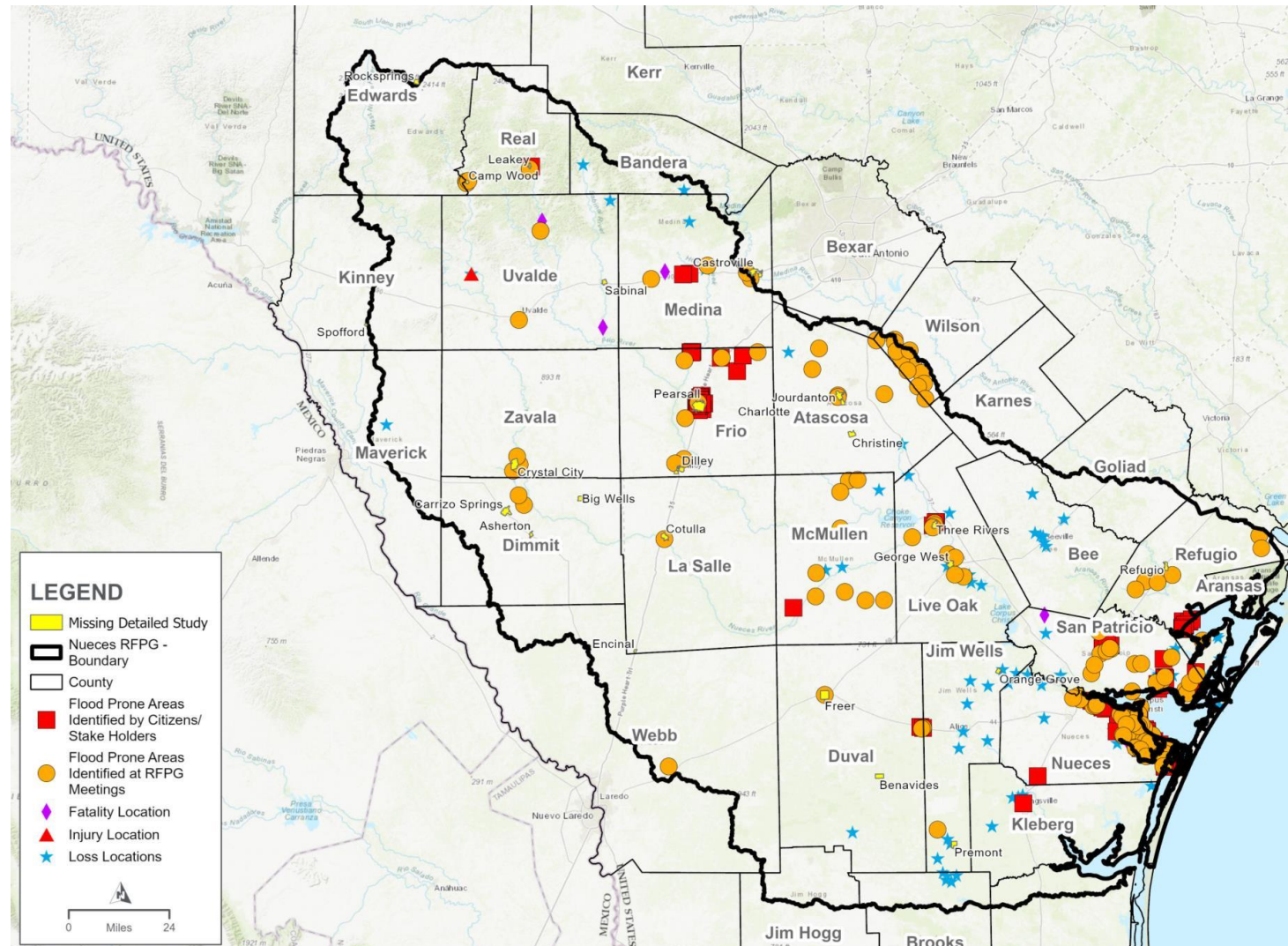


Agenda Item 11 – Status Update on Task 2 – Flood Hazard Mapping and Receive Public Input

Flood Mapping Gaps

2nd Cycle

- Gaps in Inundation Boundary Mapping and Known Flood Prone Areas
- Fewer gaps
 - Full BLE coverage, which is considered appropriate for rural areas
 - Remaining gaps are for detailed data in municipalities



Agenda Item 11 – Status Update on Task 2 – Flood Hazard Mapping and Receive Public Input

Future Flood Risk – Cycle 1

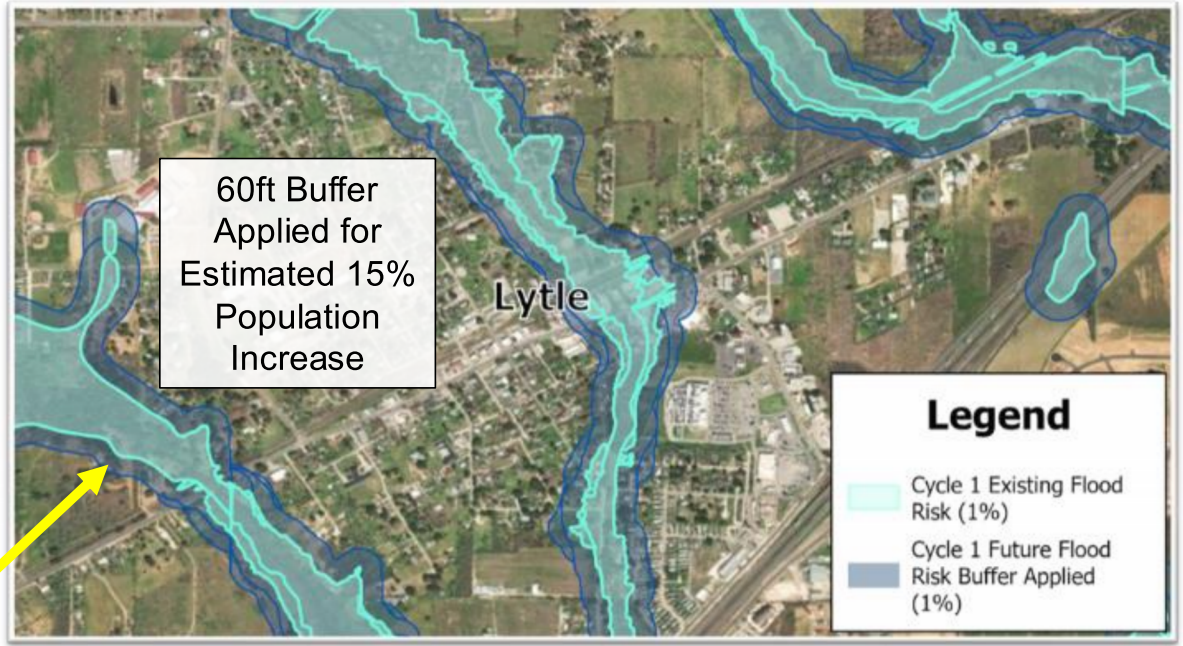
Growth projected to increase from 1.14 million in 2020 to **1.52 million** in 2050

Inland:

- Applied buffer to define future flood risk
- Limited to areas near projected population growth (mostly cities)
 - Horizontal floodplain buffer applied
 - For minimal projected growth, the future matches the existing extents
- Based on riverine systems

Table 2-1. Future Condition Buffers based on Estimated Population Increase

Estimated	Estimated, corresponding buffer in floodplain width (ft)	
	1% Annual Chance Event	0.2% Annual Chance Event
0%	0	0
1%	5	5
5%	20	15
10%	40	30
15%	60	45
25%	100	75
50%	200	150



- **NOTE:**
 - No FMPs (ongoing or future) included
 - No model backed future results
 - Gap due to unavailable BLE data

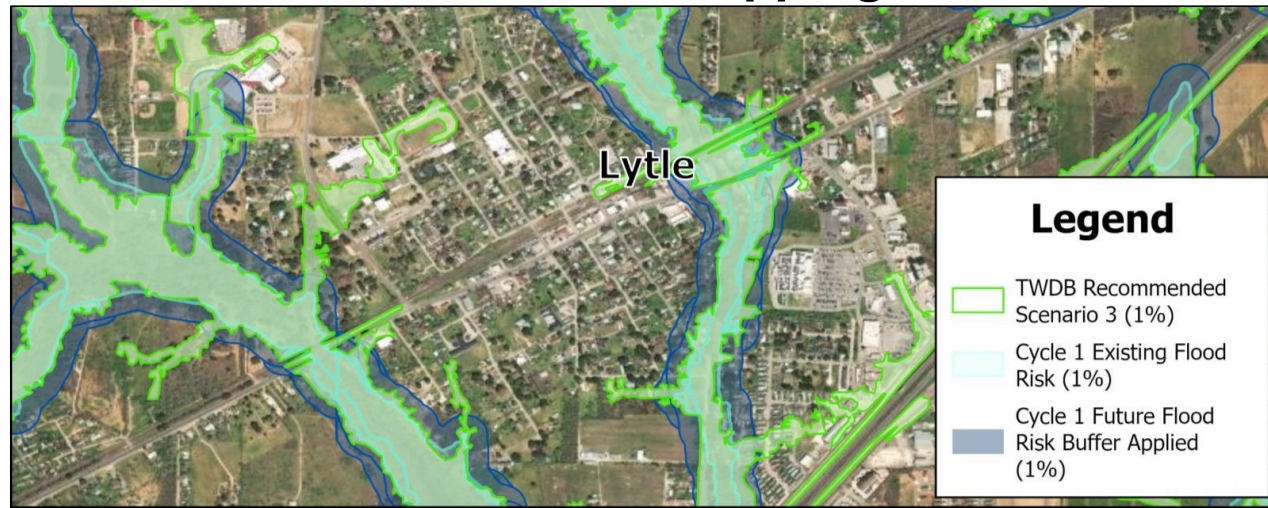
Agenda Item 11 – Status Update on Task 2 – Flood Hazard Mapping and Receive Public Input

Future Flood Risk – Cycle 2

Options:

- No Changes to 1st Cycle Approach
- TWDB Proposed

Recommendation: Fathom-AECOM-Aqua Strategies - Scenario 3



Task Subcommittee with Further Consideration and Recommendation

Agenda Item 11 – Status Update on Task 2 – Flood Hazard Mapping and Receive Public Input

Future Flood Risk – Cycle 1

Coastal:

- Future conditions based on Relative Sea Level Rise
 - NOAA 2022 – Intermediate Scenario
 - 1.1 feet of sea rise by 2050
- Floodplain buffer proposed for various coastal zones but not implemented due to time constraints
- Consider implementing Cycle 1 approach for Cycle 2



Buffer	Baffin Bay Zone	Baffin Bay - Bluff Zone	Corpus Christi Zone	Copano Zone	Barrier Island – Back Bay Zone
Average Overland Slope (%)	0.34%	2.40%	1.92%	0.16%	0.27%
Estimated Zonal Sea Level Rise Buffer (feet)	324	46	57	688	407

- NOTE:**
- No FMPs (ongoing or future) included
 - No model backed future results
 - Gap due to unavailable BLE data

Agenda Item 12 – Draft List of Potential FMXs and Draft Approach for Identifying FMX for TWDB Evaluation

# of Identified FMXs Sponsored in Region 13					
FMX	2023 RFP	2024 Amended RFP	2024 Amendment #2	2028 RFP Identified	2028 RFP Total Identified
FME	157	198	197	96	293
FMS	38	40	40	14	54
FMP	0	31	37	6	43
Total	195	269	274	116	390

***DRAFT FMX COUNTs to date

Agenda Item 12 – Draft List of Potential FMXs and Draft Approach for Identifying FMX for TWDB Evaluation

- The Regional Flood Planning Group (RFPG) to perform a subset of the potential FMEs (studies) identified in Task 4A
 - \$663,475 allocated
 - Studies to be approved at Nov 11, 2025 meeting
 - Complete by end of 2026
- The RFPG to also submit a list of FMEs to TWDB under Task 5B in March 2026 for TWDB perform

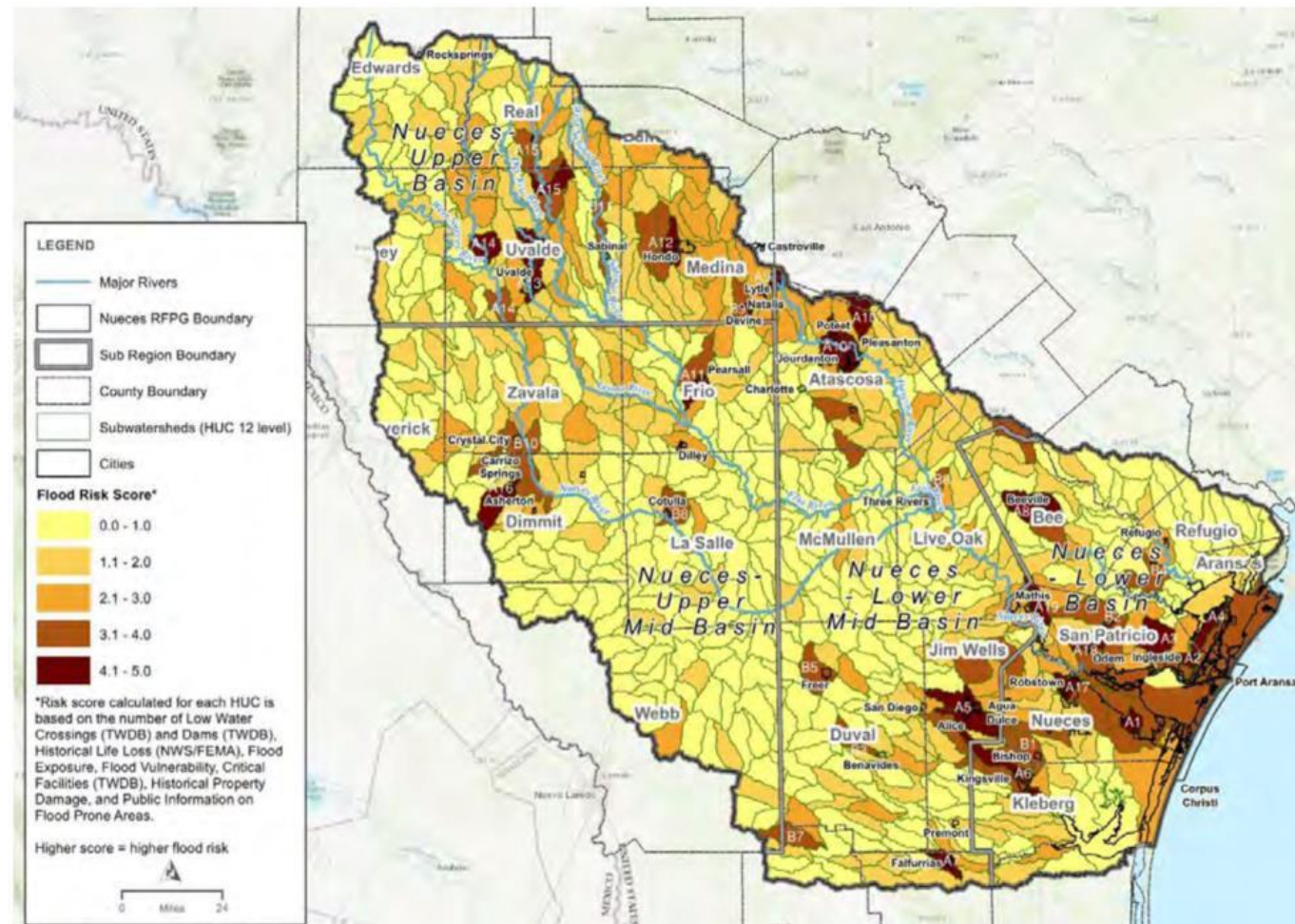


Figure 4-2. Overall Flood Risk per HUC-12 watersheds (Map 15)

Agenda Item 12 – Draft List of Potential FMXs and Draft Approach for Identifying FMX for TWDB Evaluation

- How to allocate?
- 1st Cycle Process (used objective matrix)
 - Based on greatest need (see greatest need map)
 - Selected FMEs that were close to qualifying as an FMP (Project)
 - Supported communities with little to no existing support and limited data
 - Broad based approach (spread funds out)
- 2nd Cycle Process
 - Continue 1st Cycle objective matrix plus consider...
 - Emergency need
 - Provide regional type solutions
 - Meeting goals in the basin, especially ones not being progressed
 - Clear, tangible needs, achievable
 - Sponsor engagement
 - 1st cycle Task 12 studies not complete

Table 5-2. Additional Evaluations for the Amended 2023 RFP

Flood Area ID (Map 15)	Flood Area General Description	Prop/ On-going Flood Study	Potential New FMPs	Potential New FMEs	Additional Study Allocation of Overall Effort
Highest Risk Flood Areas (Score 4-5)					
A1	City of Corpus Christi, Nueces County	Yes	3	-	3%
A2	Cities of Ingleside and Aransas Pass, San Patricio County	Yes	1	-	1%
A3	City of Gregory, San Patricio County	Yes	1	-	1%
A4	Cities of Rockport and Fulton, Aransas County	Yes	3	-	3%
A5	City of Alice, Jim Wells County	Yes	1	-	1%
A6	City of Kingsville, Kleberg County	Yes	1	-	1%
A7	City of Falfurrias, Brooks County	-	-	-	0%
A8	City of Beeville, Bee County	Yes	-	-	0%
A9	City of Lytle, Atascosa County	-	-	1	1%
A10	Pleasanton, Jourdanton, and Poteet, area in Atascosa County	-	2	-	18%
A11	City of Pearsall, Frio County	-	4	-	18%

Agenda Item 13 – Emergency Needs and FEWS in Region 13 in Response to Recent Floods

- Emergency Need, defined by TWDB: The need for projects and actions to address a flood hazard that is expected to cause the loss of function of critical facilities or to alleviate immediate threat to life and property from flooding such as imminent anticipated failure of infrastructure.
- Interactive flood map on Region 13 website ([TWDB Region 13 Comment Map](#)) includes:
 - Flood Prone areas
 - Mobile home parks
 - RV Parks

Existing R13 Early Flood Warning Systems Identified:

- Bandera
- Uvalde



This Photo by Unknown Author is licensed under CC BY

Agenda Item 14 – Status Update on TWDB RFI on Region 13 Amendment

- TWDB Request for Information sent on July 28, 2025 associated with the Region 13 amendment submitted earlier this year.
- Minor comments, predominantly related to GIS/geodatabase entries
- Comments addressed and sent to TWDB on time, August 13, 2025