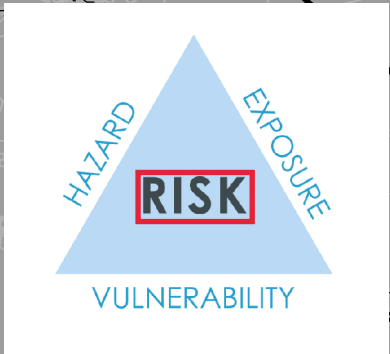
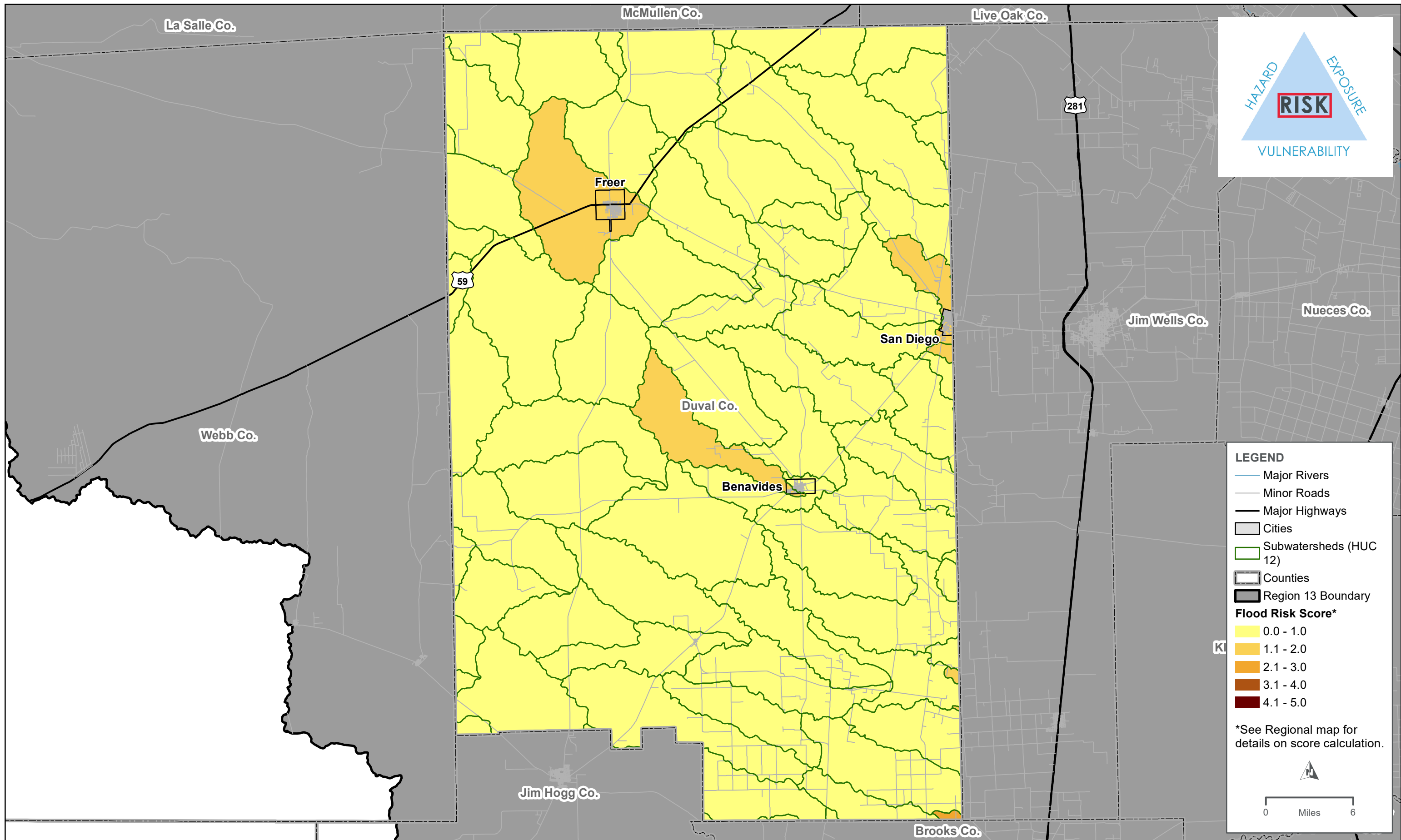


## REGION 13 - EXISTING FLOOD HAZARD - DUVAL COUNTY

DRAFT





REGION 13 - HIGHEST FLOOD RISK - DUVAL COUNTY

DRAFT





Preliminary List of Flood Mitigation Project (FMP)s, Flood Management Evaluation (FME)s and Flood Management Strategy (FMS)s for Duval County

Type (FMP/FME /FMS) <sup>1</sup>	ID	Shown on Map?	Name	Description	Cost	Sponsor
FMP	133000217	Yes	Las Animas Conveyance Infrastructure	Channel improvements to system near Las Animas Creek to improve conveyance: - Upsize culverts on Palacios St and S Benavides St - Improve conveyance capacity under bridges on HWY 359 and HWY 339 - Procurement of easements and rights-of-ways	\$ -	City of Benavides, Duval County
FMP	133000218	No	Benavides Main City Network	Improvements to the Drainage System in Central Benavides: - Increase capacity to inlets and pipes on Depot St, E Railroad Ave, Clark St, E Mesquite St, & Peters St. - Upsize pipes downstream of the inlet on Highway 339 - Expand network to Santa Rosa de Lima Street - Improvements to concrete channel on Peters Street. - Improvements to outfall structures - Procurement of outfall easements	\$ -	City of Benavides, Duval County
FMP	133000219	No	Upsize Burch St Crossing	Improvements to Earthen Channel System: - Increase culvert capacity on Burch St and other undersized crossings - Channel improvements along the main earthen channel	\$ -	City of Freer, Duval County
FMP	133000220	No	Northern San Diego Street Conveyance Improvement	Improvements to street overland drainage system: - Curb and gutter replacement - Improve conveyance by road paving and regrading of prioritized streets	\$ -	City of San Diego, Duval County
FMP	133000221	No	Northern San Diego Drainage Improvement Project	Drainage improvements to subsurface drainage systems - Installation of new underground drainage infrastructure along Luby street - Expansion and improvements to Dix Street System	\$ -	City of San Diego, Duval County
FMP	133000222	No	Improvements to Drainage Connectivity along Railroad	Improvement to underground drainage system to increase capacity and improve conveyance on railroad under-crossings and on sections of Highway 44 to improve stormwater drainage from north to south	\$ -	City of San Diego, Duval County
FMP	133000223	No	Southern San Diego Drainage Improvement Project	New underground stormwater collection system along Collins Street, including interconnections between existing and new infrastructure.	\$ -	City of San Diego, Duval County
FMP	133000224	No	Improvements to San Diego Levee Outfall System	Improvements to outfall structures and appurtenances along San Diego Levee System	\$ -	City of San Diego, Duval County
FMP	133000225	No	Realitos Drainage Improvements	Improvements to surface and subsurface infrastructure of Realitos Drainage System	\$ -	Duval County
FMP	133000226	No	Concepcion Drainage Improvements	Improvements to drainage infrastructure in Concepcion	\$ -	Duval County
FME	131000002	No	County Wide Drainage Master Plan Study	Drainage Master Planning Study - Duval County	\$ -	Duval County
FMP	133000995	Need Discussion	Headwaters Santa Gertrudis Creek	Need the location during the interview.		
FMP	131000996	Need Discussion	Middle Macho Creek	Need the location during the interview.		
FMP	129000997	Need Discussion	Town of San Diego-San Diego Creek	Need the location during the interview.		
FMP	127000998	Need Discussion	Upper Ygnacio Creek	Need the location during the interview.		
FMP	125000999	Need Discussion	Cuerva Tank-Los Olmos Creek	Need the location during the interview.		

<sup>1</sup> Flood Management Evaluation (FME)- flood study of a specific flood prone area needed to assess risk

Flood Mitigation Project (FMP)- structural or non-structural project that when implemented will reduce flood risk, mitigate hazards to life or property. Includes nature-based solutions. 'No negative impact'

Flood Management Strategy (FMS)- proposed plan to reduce flood risk or mitigate flood hazards. Any action that a RFPG would like to evaluate and recommend that does not qualify as FME or FMP.

Public Comments

Comment Date	Flood Type	Flood Frequency	Most Recent Flood Event	Description
6/9/2021	Building	Frequently	june 3, 2021	heavy rains cause flooding in basement my office contains three parts including a nuclear shelter witch drips don to elections storage room also compounded with the damaged roof in elections storage adds to water coming in
-	-	-	-	Channel maintainance needed
-	-	-	-	Drainage needed for roads. Floodwaters have nowhere to go
-	-	-	-	Flooding - 1' water at the intersection of SH 44 and SH 16 after rains.