

Vol.251

Manufacturing
Shoes
Since 1932



Tel. 877-258-0580 Fax. 877-258-0581 [www. GenuineGrip.com](http://www.GenuineGrip.com)



Evolution of Work Boots



Slip-Resistant with Comfort!

Genuine Grip®'s Priority

Genuine Grip & S Fellas Footwear is your best source for slip-resistant footwear at factory-direct prices. Manufacturing footwear since 1932, Genuine Grip's expertise comes from our team's accumulated technologies, skills, experiences and ideas in the footwear industries.

Genuine Grip's mission is to reduce workplace accidents and provide superior comfort.



Genuine Grip®'s Technology

Genuine Grip's soles have specially designed tread patterns made of special rubber compound to maximize slip-resistance. In the sole-to-sole comparison tests, it has been proved that Genuine Grip's sole is the best slip-resistant sole on tile with water, oil, or shortening.

**ASTM F3445-24
SRO Slip-Resistant**

"WALKING ON AIR" Polyurethane footbed provides superb shock absorbency, comfort and moisture absorption along with Aegis® microbe shield that controls odor, staining, and deterioration.

Genuine Grip footwear not just reduces injuries, but reduces foot pain and stress for your feet that cause fatigue to lower back, hip, ankles and knees.



WALKING ON AIR Polyurethane Footbed

Ergonomically & aerodynamically designed polyurethane footbed with state of art shock absorbing cushion, moisture absorbing fabric, and Aegis Microbe Shield® that controls odor, staining, and deterioration



Composite Safety Toe Meeting ASTM Standards for Lightweight & Non-Metal Construction



Steel Safety Toe Meeting ASTM Standards for Maximum Protection



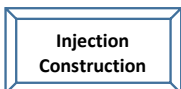
Carbon Nano Safety Toe Meeting ASTM Standards for Lightweight & Non-Metal Construction



Airport Friendly Non-Metal Construction with 100% Metal-Free Materials



Waterproof with Membrane or by Injection Construction for Your Dry Feet



Injection Construction for Durability & Comfort



Aegis Microbe Shield Controls Odor, Staining, and Deterioration



Puncture Resistant Meeting ASTM Standards with Flexible Insole Board



Metatarsal Guard Meeting ASTM Standards with 1/2" Poron XRD for Better Protection



Electrical Hazard Meeting ASTM Standards for Protection from Electrical Shock



Static Dissipative Meeting ASTM Standards to Reduce Accumulation of Static Electricity

**Safety Toe Styles Meeting
ASTM F 2413-18
M/VC**



Genuine Grip® Slip-Resistant Footwear



Easy On
Ultra Lightweight
Wide Base for Enhanced Stability

NEW



Men's Soft Toe 1400 Black
Med & Wide: 4 - 11.5, 12, 13, 14

Men's Nano Toe 1401 Black
Size: 4 - 11.5, 12, 13, 14

Women's Soft Toe 140 Black
Med & Wide: : 5 - 11.5, 12
1233300321

Women's Nano Toe 141 Black
Size: : 5 - 11.5, 12
1233500321

Men's Soft Toe 1500 Black
Med & Wide: 4 - 11.5, 12, 13, 14

Men's Nano Toe 1501 Black
Size: 4 - 11.5, 12, 13, 14

Women's Soft Toe 150 Black
Med & Wide: : 5 - 11.5, 12
1233300321

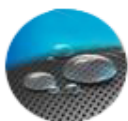
Women's Nano Toe 151 Black
Size: : 5 - 11.5, 12
1233500321

- ◆ Genuine Grip® Slip-Resistant Rubber Outsole with Superior Grip
- ◆ Ultra Lightweight Construction
- ◆ Shock Absorbing Composite Foam Cushion Mid-sole
- ◆ "Walking on Air" Polyurethane Removable Cushion Insole
- ◆ 100% Cruelty-Free. Quality Man-Made Material
- ◆ Aegis Microbe Shield® Controls Odor, Staining, Deterioration
- ◆ Oil Resistant
- ◆ Water Resistant



Comp Toe Styles Meeting
ASTM F 2413-18

ASTM F3445-24
SRO Slip-Resistant

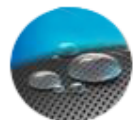


**Water
Repellent**



Guaranteed to give you
hours of Comfort !

**ULTRA
LIGHT**



**Water
Repellent**



Men's 1800 Black
Size: 6 - 11.5, 12, 13, 14
1233150321

Women's 180 Black
Size: 5 - 10.5, 11
1233150321

Men's 1700 Black
Size: 6 - 11.5, 12, 13, 14
1233150321

Women's 170 Black
Size: 5 - 10.5, 11
1233150321

ASTM F3445-24
SRO Slip-Resistant

- Ultra Lightweight
- Water Repellent
- Aegis Microbe Shield® Controls Odor, Staining, Deterioration
- Breathable Fabric upper

- Shock Absorbing Composite Form Mid-sole
- "WALKING ON AIR" Removable Polyurethane Footbed
- Genuine Grip® Slip-Resistant Rubber Outsole with Superior Grip
- Oil Resistant



Men's 1600 Black

Medium: 6 - 11.5, 12, 13, 14

Wide: 6 - 11.5, 12, 13, 14

1233150321

- Ultra Lightweight
- Genuine Grip® Slip-Resistant Rubber Outsole with Superior Grip
- Quality Leather Upper
- Shock Absorbing Composite Foam Mid-sole
- "WALKING ON AIR" Polyurethane Footbed
- Aegis Microbe Shield® Controls Odor, Staining, Deterioration
- Oil Resistant
- Water Resistant

ASTM F3445-24
SRO Slip-Resistant



Women's 160 Black

Medium: 5 - 10.5, 11

Wide: 5 - 10.5, 11

1233150321

- Genuine Grip® Slip-Resistant Rubber Outsole with Superior Grip
- "WALKING ON AIR" Removable Polyurethane Footbed
- Aegis Microbe Shield® Controls Odor, Staining, Deterioration
- Quality Leather Upper
- Shock Absorbing Polyurethane Mid-sole
- Oil Resistant
- Water Resistant

ASTM F3445-24
SRO Slip-Resistant

Men's 1010 Black

Medium: 6 - 11.5, 12, 13, 14, 15, 16

Wide: 6 - 11.5, 12, 13, 14, 15, 16

1233150321

Women's 1110 Black

Medium: 5 - 10.5, 11

Wide: 5 - 10.5, 11

1233150321

Men's 1015 White

Medium: 6 - 11.5, 12, 13, 14

1233150321

Women's 1115 White

Medium: 5 - 10.5, 11

1233150321

- Ultra Lightweight
- Genuine Grip® Slip-Resistant Rubber Outsole with Superior Grip
- Quality Leather Upper
- Shock Absorbing Inner EVA Mid-sole
- "WALKING ON AIR" Removable Polyurethane Footbed
- Aegis Microbe Shield® Controls Odor, Staining, Deterioration
- Oil Resistant
- Water Resistant

ASTM F3445-24
SRO Slip-Resistant



Men's 2060 Black

Medium: 6 - 11.5, 12, 13, 14

Wide: 6 - 11.5, 12, 13, 14

1232900321

Women's 260 Black

Medium: 5 - 10.5, 11

Wide: 5 - 10.5, 11

1232900321



Men's 2070 Black

Medium: 6 - 11.5, 12, 13, 14

Wide: 6 - 11.5, 12, 13, 14

1232900321

Women's 270 Black

Medium: 5 - 10.5, 11

Wide: 5 - 10.5, 11

1232900321



Men's 4705 White
 Medium: 6 - 11.5, 12, 13, 14
 Wide: 6 - 11.5, 12, 13, 14
 1233500321

Women's 475 White
 Medium: 6 - 10.5, 11
 Wide: 6 - 10.5, 11
 1233500321



ASTM F3445-24
SRO Slip-Resistant



Men's 4700 Black
 Medium: 6 - 11.5, 12, 13, 14
 Wide: 6 - 11.5, 12, 13, 14
 1233500321

Women's 470 Black
 Medium: 5 - 10.5, 11
 Wide: 5 - 10.5, 11
 1233500321



Men's 2010 Black
 Wide: 6 - 11.5, 12, 13, 14
 1233000321

Women's 210 Black
 Wide: 5 - 10.5, 11
 1233000321

ASTM F3445-24
SRO Slip-Resistant



Men's 2015 White
 Wide: 6 - 10.5, 11, 12, 13, 14
 1233000321

Women's 215 White
 Wide: 5 - 10.5, 11
 1233000321

- Genuine Grip® Slip-Resistant Rubber Outsole with Superior Grip
- "WALKING ON AIR" Removable Polyurethane Footbed
- Aegis Microbe Shield® Controls Odor, Staining, Deterioration
- Quality Leather Upper

- Shock Absorbing Inner EVA Mid-sole
- Flexible Soft Insole Board
- Oil Resistant
- Water Resistant

Women's 410 Black

Medium: 5 - 9.5, 10, 11
Wide: 5 - 9.5, 10, 11
1233550321



Women's 420 Black

Medium: 5 - 9.5, 10, 11
Wide: 5 - 9.5, 10, 11
1233550321



ULTRA
LIGHT

Women's 425 White

Medium: 5 - 9.5, 10, 11
Wide: 5 - 9.5, 10, 11
1233550321



- Ultra Light Weight Construction
- Genuine Grip® Slip-Resistant Rubber Outsole with Superior Grip
- Full Grain Leather Upper
- Shock Absorbing Composite Foam Mid-sole
- "WALKING ON AIR" Removable Polyurethane Footbed
- Aegis Microbe Shield® Controls Odor, Staining, Deterioration
- Oil Resistant
- Water Resistant

ASTM F3445-24
SRO Slip-Resistant

ULTRA
LIGHT

Women's 415 White

Medium: 5 - 9.5, 10, 11
Wide: 5 - 9.5, 10, 11
1233550321



Perfect for everyday wear!



Men's 3800 Black
Whole Sizes Only: 3 - 14
1232300321

Injection Clogs

ULTRA
LIGHT



Women's 385 White
Whole Sizes Only: 6 - 12
1232300321

- Injection Construction
- Genuine Grip® Slip-Resistant Rubber Outsole with Superior Grip
- "Walking on Air" Removable Polyurethane Footbed
- SilverPlus® treatment for inactivating sulphur that causes bacteria, obtaining hygiene & freshness
- Composite EVA Injection Upper
- Waterproof
- Oil Resistant
- Slip Resistant

ASTM F3445-24
SRO Slip-Resistant

Women's 390 Black
Whole Sizes Only: 6 - 12
1232200321

ULTRA
LIGHT



Men's 3900 Black
Whole Sizes Only: 4 - 14
1232200321



Men's 2030 Black
Wide: 6 - 11.5, 12, 13, 14
1233000321

Women's 230 Black
Wide: 5 - 10.5, 11
1233000321

- Genuine Grip® Slip-Resistant Rubber Outsole with Superior Grip
- "WALKING ON AIR" Polyurethane Footbed
- Aegis Microbe Shield® Controls Odor, Staining, Deterioration
- Quality Leather Upper
- Shock Absorbing Inner EVA Mid-sole
- Flexible Soft Insole Board
- Oil Resistant
- Water Resistant

ASTM F3445-24
SRO Slip-Resistant





Women's 8200 Black
Medium: 5 - 9.5, 10, 11
1233850321

- Genuine Grip® Slip-Resistant Rubber Outsole with Superior Grip
- Full Grain Leather Upper
- Shock Absorbing Polyurethane Mid-sole
- Oil Resistant
- Water Resistant



Women's 8300 Black
Medium: 5 - 9.5, 10, 11
1233700321



Women's 8400 Black
Medium: 5 - 9.5, 10
1233850321



Women's 460 Black
Medium: 5 - 9.5, 10, 11
1233350321

- Genuine Grip® Slip-Resistant Rubber Outsole with Superior Grip
- Full Grain Leather Upper
- Side Zipper for Comfort Wear
- Shock Absorbing Polyurethane Mid-sole
- "WALKING ON AIR" Removable Polyurethane Footbed
- Aegis Microbe Shield® Controls Odor, Staining, Deterioration
- Oil Resistant
- Water Resistant



ASTM F3445-24
SRO Slip-Resistant



Men's 9540 Black
Medium: 6 - 11.5, 12, 13, 14, 15, 16
Wide: 6 - 11.5, 12, 13, 14, 15, 16
1233850321

Women's 940 Black
Medium: 5 - 10.5, 11
Wide: 5 - 10.5, 11
1233850321

Men's 9550 Black
Medium: 7 - 11.5, 12, 13, 14
Wide: 7 - 11.5, 12, 13, 14
1233850321



ASTM F3445-24
SRO Slip-Resistant



Men's 7100 Black
Medium: 6 - 11.5, 12, 13, 14, 15
Wide: 6 - 11.5, 12, 13, 14, 15
1233650321

Women's 720 Black
Medium: 5 - 10.5, 11
Wide: 5 - 10.5, 11
1233650321

- Genuine Grip® Slip-Resistant Rubber Outsole with Superior Grip
- Quality Leather Upper
- Shock Absorbing Polyurethane Mid-sole
- "WALKING ON AIR" Removable Polyurethane Footbed
- Aegis Microbe Shield® Controls Odor, Staining, Deterioration
- Oil Resistant
- Water Resistant



" **WALKING ON AIR** " Removable Polyurethane Footbed

Classy and Comfortable!

New!
“Shielder”

ASTM F2413-24
I/C EH SRO



Zipper Lock



Ultra Lightweight
Wide Base for
Enhanced Stability

Men's 7230 Black
Nano Comp Toe
MED 4 - 11.5, 12, 13, 14, 15, 16
WIDE 4 - 11.5, 12, 13, 14, 15, 16
1234550321

Men's 7030 Black
Soft Toe
MED 4 - 11.5, 12, 13, 14, 15, 16
WIDE 4 - 11.5, 12, 13, 14, 15, 16
1234350321

Women's 723 Black
Nano Comp Toe
MED 5 - 11.5, 12
WIDE 5 - 11.5, 12
1234550321

Women's 703 Black
Soft Toe
MED 5 - 11.5, 12
WIDE 5 - 11.5, 12
1234350321

- ◆ Zipper Lock
- ◆ Genuine Leather Upper
- ◆ **ASTM F2413-24 I/C EH SRO**
- ◆ **ASTM F3445-24 Slip-Resistant**
- ◆ Oil & Water Resistant
- ◆ Lightweight Molded Form Midsole
- ◆ Light Weight Construction
- ◆ Genuine Grip® Slip Resistant Rubber Outsole with Superior Grip
- ◆ Composite Safety Toe
- ◆ Antimicrobial
- ◆ Electrical Hazard
- ◆ "Walking on Air" PU Insole
- ◆ Non Metal Construction
- ◆ Aegis Microbe Shield

ASTM F3445-24
SRO Slip-Resistant



Men's 7160 Black Waterproof
Wide: 6 - 11.5, 12, 13, 14
1234950321

Women's 760 Black Waterproof
Wide: 5 - 10.5, 11
1234950321



- Waterproof
- Genuine Grip® Slip-Resistant Rubber Outsole with Superior Grip
- Quality Leather Upper
- Shock Absorbing Polyurethane Mid-sole
- "WALKING ON AIR" Removable Polyurethane Footbed
- Aegis Microbe Shield® Controls Odor, Staining, Deterioration
- Oil Resistant



ASTM F3445-24
SRO Slip-Resistant



ULTRA
LIGHT

Men's 7141 Black
Wide: 7 - 11.5, 12, 13, 14
1234150321

- Genuine Grip® Slip-Resistant Rubber Outsole with Superior Grip
- Quality Leather Upper
- Shock Absorbing Polyurethane Mid-sole
- "WALKING ON AIR" Removable Polyurethane Footbed
- Aegis Microbe Shield® Controls Odor, Staining, Deterioration
- Oil Resistant
- Water Resistant

Women's 741 Black
Sizes: Womens 6 - 9.5, 10, 11
1233650321

- Lightweight
- Genuine Grip® Slip-Resistant Rubber Outsole with Superior Grip
- Quality Leather Upper
- Shock Absorbing Inner EVA Mid-sole
- Flexible Soft Insole Board
- "WALKING ON AIR" Polyurethane Removable Footbed
- Aegis Microbe Shield® Controls Odor, Staining, Deterioration
- Oil & Water Resistant



- Steel Toe meeting ASTM Standards
- Genuine Grip® Slip-Resistant Rubber Outsole with Superior Grip
- "WALKING ON AIR" Removable Polyurethane Footbed
- Shock Absorbing Polyurethane Mid-sole
- Quality Leather Upper
- Aegis Microbe Shield® Controls Odor, Staining, Deterioration
- Oil Resistant



LADDER LOCK



Men's 1021 Black Steel Toe

Size: 4 - 11.5, 12, 13, 14, 15, 16
1233700321

Women's 1021 Black Steel Toe

Size: 6 - 10.5, 11
1233700321



**ASTM F 2413-18
MIC EH**

**ASTM F3445-21
SR Slip-Resistant**



Men's 1011 Black Steel Toe

Size: 4 - 11.5, 12, 13, 14, 15, 16
1233500321

Women's 1011 Black Steel Toe

Size: 6 - 10.5, 11
1233500321



Zipper Lock



**ASTM F 2413-18
MIC EH**

Men's 7130 Black Steel Toe Zipper

Medium: 4 - 11.5, 12, 13, 14, 15, 16
Wide: 7 - 11.5, 12, 13, 14, 15, 16
1234550321

Women's 7130 Black Steel Toe Zipper

Medium: 5.5 - 10.5, 11
Wide: 8.5 - 10.5, 11
1234550321



**ASTM F3445-24
SRO Slip-Resistant**

Men's 7800 Black Steel Toe Waterproof

Wide: 4 - 11.5, 12, 13, 14
1235650321

Women's 7800 Black Steel Toe Waterproof

Wide: 6 - 10.5, 11
1235650321

**ASTM F3445-21
SR Slip-Resistant**

- Steel Toe meeting ASTM Standards
- Waterproof with Membrane
- Genuine Grip® Slip-Resistant Rubber Outsole with Superior Grip
- Quality Leather Upper
- Shock Absorbing Polyurethane Mid-sole
- "WALKING ON AIR" Polyurethane Footbed
- Aegis Microbe Shield® Controls Odor, Staining, Deterioration
- Oil Resistant
- Injection Construction

- Steel Toe meeting ASTM Standards
- Genuine Grip® Slip-Resistant Rubber Outsole with Superior Grip
- Quality Leather Upper
- Shock Absorbing Polyurethane Mid-sole
- "WALKING ON AIR" Removable Polyurethane Footbed
- Aegis Microbe Shield® Controls Odor, Staining, Deterioration
- Oil Resistant
- Water Resistant

Evolution of Work Boots

Eagle



Included:
Blue Color
Extra Laces

Evolution of Work Boots

Hawk

ULTRA
LIGHT



**Men's 5030 Black
Comp Toe**
Size 6 - 11.5, 12, 13, 14
1233350321

ASTM F 2413-18
M I C EH

ASTM F3445-21
SR Slip-Resistant



ULTRA
LIGHT

**Men's 5020 Black
Comp Toe**
Size 6 - 11.5, 12, 13, 14
1233000321

**Women's 520 Black
Comp Toe**
Size 5 - 10.5, 11
1233000321

- ◆ Composite Safety Toe
- ◆ Ultra Lightweight
- ◆ Non-Metal Construction
- ◆ Electrical Hazard

- ◆ ASTM F 2413-18 M/I/C EH
- ◆ Shock Absorbing Removable Molded Foam Footbed
- ◆ Aegis Microbe Shield® Controls Odor, Staining, Deterioration
- ◆ 100% Cruelty-Free. Quality Man-Made Material

- ◆ Oil Resistant
- ◆ Slip Resistant
- ◆ Water Resistant
- ◆ Extra Blue Shoe Laces

Evolution of Work Boots

Mustang

Electro Static Dissipate Protects
against hazards related to excessively
low footwear resistance.
Meets SD static-dissipative
ASTM F2413-18 standards

NEW



**Men's 5110 Black
SD Comp Toe PR**
Size 6 - 11.5, 12, 13, 14
1233950321

**Women's 510 Black
SD Comp Toe PR**
Size 5 - 10.5, 11
1233950321

Evolution of Work Boots

Sirius



**Men's 5190 Black
Men's 5195 White
SD Comp Toe PR**
Size 6 - 11.5, 12, 13, 14
1233950321

**Women's 590 Black
Women's 595 White
SD Comp Toe PR**
Size 5 - 10.5, 11
1233950321



ASTM F 2413-18
M/I/C PR SD 100

ASTM F3445-24
SRO Slip-Resistant

- ◆ Carbon Nano Safety Toe
- ◆ Static Dissipative
- ◆ Puncture-Resistant
- ◆ Non-Metal Construction
- ◆ Shock Absorbing Polyurethane Cushion Mid-sole
- ◆ Genuine Grip® Slip-Resistant Rubber Outsole with Superior Grip

- ◆ Polyurethane Cushion Massaging Insole
- ◆ ASTM F 2412/3-18 M/I/C PR SD 100
- ◆ 100% Cruelty-Free. Quality Man-Made Material
- ◆ Aegis Microbe Shield® Controls Odor, Staining, Deterioration
- ◆ Water Resistant
- ◆ Oil Resistant

Static Dissipative
Meeting ASTM Standards to
Reduce Accumulation of
Static Electricity
ASTM F2413-18
M/I/C PR SD 100

New SD Style "FANGS" Evolution of Work Boots



Evolution of Work Boots

Fangs

Women's **570** Black
Women's **571** Blue
Women's **572** Burgundy
SD Comp Toe PR

Size: 5 - 10.5, 11
1234200321

Men's **5170** Black
Men's **5171** Blue
Men's **5172** Burgundy
SD Comp Toe PR

Size: 6 - 11.5, 12, 13, 14
1234200321



ASTM F 2413-18
M/I/C
PR SD 100

ASTM F3445-24
SRO Slip-Resistant



Evolution of Work Boots

Fangs 6"



Men's **5180** Black
Men's **5181** Blue
SD Comp Toe PR
Size: 6 - 11.5, 12, 13, 14
1234550321

Women's **580** Black
Women's **581** Blue
SD Comp Toe PR
Size: 5 - 10.5, 11
1234550321

- ◆ Carbon Nano Safety Toe
- ◆ Static Dissipative
- ◆ Puncture-Resistant
- ◆ Non-Metal Construction
- ◆ Shock Absorbing Polyurethane Cushion Mid-sole
- ◆ Genuine Grip® Slip-Resistant Rubber Outsole with Superior Grip

- ◆ Polyurethane Cushion Massaging Insole
- ◆ ASTM F 2412/3-18 M/I/C PR SD 100
- ◆ 100% Cruelty-Free. Quality Man-Made Material
- ◆ Aegis Microbe Shield® Controls Odor, Staining, Deterioration
- ◆ Water Resistant
- ◆ Oil Resistant



Evolution of Work Boots

Mercury

6090 Mercury Black Comp Toe

Men's 7 - 11.5, 12, 13, 14
1234950321



6091 Mercury Brown Comp Toe

Men's 7 - 11.5, 12, 13, 14
1234950321



**ASTM F 2413-18
M I C E H**

**ASTM F3445-21
SR Slip-Resistant**

- ◆ Composite Safety Toe
- ◆ Waterproof with Membrane
- ◆ Full Grain Leather Upper
- ◆ "Walking on Air" Removable Polyurethane Footbed

- ◆ ASTM F 2413-18 M/I/C EH
- ◆ Electrical Hazard
- ◆ Shock Absorbing Polyurethane Midsole
- ◆ Aegis Microbe Shield® Controls Odor, Staining, Deterioration

- ◆ Injection Construction
- ◆ Non Metal Construction
- ◆ Oil Resistant
- ◆ Slip Resistant
- ◆ Rugged Rubber Outsole

Evolution of Work Boots

Poseidon 8"

6080 Poseidon 8" Black Comp Toe

Men's 7 - 11.5, 12, 13, 14, 15
1235850321

6081 Poseidon 8" Brown Comp Toe

Men's 7 - 11.5, 12, 13, 14
1235850321





Evolution of Work Boots

Poseidon

ASTM F 2413-18
M I/C EH

ASTM F3445-21
SR Slip-Resistant



Injection
Construction



Men's Comp Toe

6050 Black

6051 Brown

6052 Wheat

Medium: 6 - 11.5, 12, 13, 14

Wide: 6 - 11.5, 12, 13, 14, 15

1235250321

Women's Comp Toe

650 Black

651 Brown

652 Wheat

Medium: 6 - 10.5, 11

Wide: 6 - 10.5, 11

1235250321

Men's Soft Toe

6060 Black

Size: 6 - 11.5, 12, 13, 14

1235150321

Women's Soft Toe

660 Black

Size: 6 - 10.5, 11

1235150321

- ◆ Composite Safety Toe
- ◆ Waterproof with Membrane
- ◆ Full Grain Leather Upper
- ◆ "Walking on Air" Removable Polyurethane Footbed

- ◆ ASTM F 2413-18 M/I/C EH
- ◆ Electrical Hazard
- ◆ Shock Absorbing Polyurethane Midsole
- ◆ Aegis Microbe Shield® Controls Odor, Staining, Deterioration

- ◆ Injection Construction
- ◆ Non Metal Construction
- ◆ Oil Resistant
- ◆ Slip Resistant
- ◆ Rugged Rubber Outsole

Men's Comp Toe Metatarsal Guard Puncture Resistant

6070 Black

6071 Brown

Size: 6 - 11.5, 12, 13, 14

1236750321



Metatarsal Guard
Puncture Resistant

ASTM F 2413-18
M/I/C EH MT PR

ASTM F3445-21
SR Slip-Resistant

Women's Comp Toe Metatarsal Guard Puncture Resistant

670 Black

671 Brown

Size: 6 - 10.5, 11

1236750321



1/2" Poron XRD
Met-Guard for Better Protection



Injection
Construction



Evolution of Work Boots

Orion



Puncture Resistant



Composite Toe



6451 Orion Comp Toe Brown
Men's 7 - 11.5, 12, 13, 14
1236850321

6450 Orion Comp Toe Black
Men's 7 - 11.5, 12, 13, 14
1236850321



Electrical Hazard



Non-Metal



Waterproof



PROTECTED BY THE
aegis
MICROBE SHIELD
CONTROLS ODOR, STAINING, DETERIORATION



Injection Construction

ASTM F 2413-18
M/I/C EH PR

ASTM F3445-21
SR Slip-Resistant

- ◆ Composite Safety Toe
- ◆ Waterproof with Membrane
- ◆ Full Grain Leather Upper
- ◆ "Walking on Air" Removable Polyurethane Footbed

- ◆ ASTM F 2413-18 M/I/C EH
- ◆ Electrical Hazard
- ◆ Shock Absorbing Polyurethane Midsole
- ◆ Aegis Microbe Shield® Controls Odor, Staining, Deterioration

- ◆ Puncture Resistant
- ◆ Injection Construction
- ◆ Non Metal Construction
- ◆ Oil & Slip Resistant
- ◆ Rugged Rubber Outsole

Men's Comp Toe 6040 Black
7 - 11.5, 12, 13, 14
1235050321

Men's Comp Toe 6041 Brown
7 - 11.5, 12, 13, 14
1235050321

Evolution of Work Boots

Hercules

Men's Soft Toe 6045 Black
7 - 11.5, 12, 13, 14
1234950321

Men's Comp Toe Metatarsal Guard 6048 Black
7 - 11.5, 12, 13, 14
1236550321

Leather Cover for Elastic Band



1/2" Poron XRD Met-Guard for Better Protection



Composite Toe



Non-Metal



Electrical Hazard



Injection Construction



PROTECTED BY THE
aegis
MICROBE SHIELD
CONTROLS ODOR, STAINING, DETERIORATION

ASTM F 2413-18
M/I/C EH

ASTM F3445-21
SR Slip-Resistant



- 16**
- ◆ Composite Safety Toe
 - ◆ Electrical Hazard
 - ◆ Full Grain Leather Upper
 - ◆ "Walking on Air" Removable Polyurethane Footbed

- ◆ ASTM F 2413-18 M/I/C EH
- ◆ Waterproof Upper Leather
- ◆ Shock Absorbing Polyurethane Midsole
- ◆ Aegis Microbe Shield® Controls Odor, Staining, Deterioration

- ◆ Injection Construction
- ◆ Non Metal Construction
- ◆ Oil Resistant
- ◆ Slip Resistant
- ◆ Rugged Rubber Outsole



Men's 6200 Trekker
Black Comp Toe Puncture Resistant
 Men's 7 - 11.5, 12, 13, 14
 1235250321



Puncture Resistant



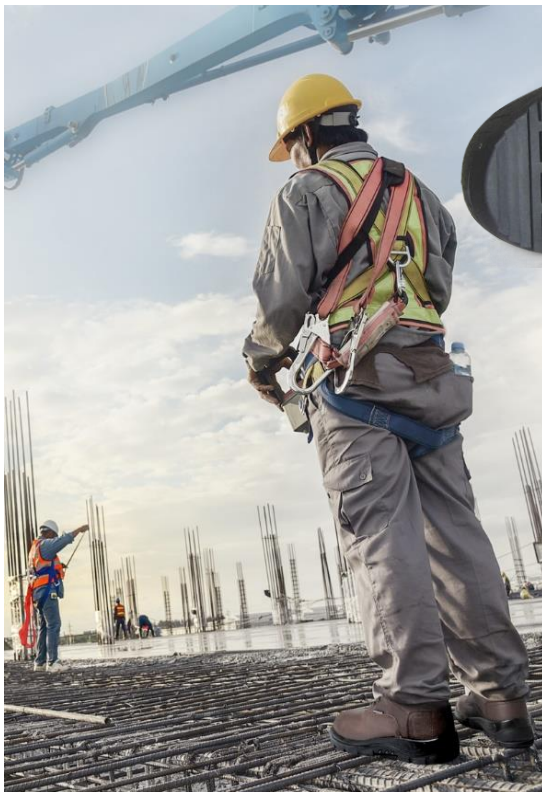
Men's 6300 Trekker
Brown Comp Toe Puncture Resistant
 Men's 7 - 11.5, 12, 13, 14
 1235250321



Men's 6100 Vulcan
Brown Comp Toe Puncture Resistant
 Men's 7 - 11.5, 12, 13, 14
 1235550321



Men's 6000 Vulcan
Black Comp Toe Puncture Resistant
 Men's 7 - 11.5, 12, 13, 14
 1235550321



ASTM F 2413-18
 M/I/C EH PR

ASTM F3445-21
 SR Slip-Resistant

- ◆ Composite Safety Toe
- ◆ Waterproof with Membrane
- ◆ Puncture Resistant
- ◆ "Walking on Air" Removable Polyurethane Footbed

- ◆ ASTM F 2413-18 M/I/C EH
- ◆ Electrical Hazard
- ◆ Shock Absorbing Polyurethane Midsole
- ◆ Aegis Microbe Shield® Controls Odor, Staining, Deterioration

- ◆ Full Grain Leather Upper
- ◆ Injection Construction
- ◆ Non Metal Construction
- ◆ Oil & Slip Resistant
- ◆ Rugged Rubber Outsole

NEW

Guardian



Zipper Lock

LIGHT WEIGHT



**ASTM F2413-24
SRO Slip-Resistant**

**ASTM F 2413-24
I/C EH PR SRO**

- ◆ Zipper Lock
- ◆ Carbon Nano Safety Toe
- ◆ Waterproof with Membrane
- ◆ Full Grain Leather Upper
- ◆ "Walking on Air" PU Insole
- ◆ Non Metal Construction
- ◆ Puncture Resistant
- ◆ Phylon Midsole

- ◆ Polishable
- ◆ Light Weight
- ◆ Aegis Microbe Shield
- ◆ Electric Hazard
- ◆ Oil Resistant
- ◆ Rugged Rubber Outsole
- ◆ **ASTM F2413-24 I/C EH PR SRO**



**Men's 5050 Protect
Black Comp Toe
Puncture Resistant**
Size 7 - 11.5, 12, 13, 14
1235250321

LIGHT WEIGHT

**ASTM F 2413-18
M/I/C EH PR**

**ASTM F3445-21
SR Slip-Resistant**



- ◆ Composite Safety Toe
- ◆ Waterproof with Membrane
- ◆ Quality Leather Upper
- ◆ "Walking on Air" PU Insole
- ◆ Non Metal Construction
- ◆ Lightweight Construction
- ◆ Oil Resistant
- ◆ Electrical Hazard

- ◆ **ASTM F2413-18 M/I/C EH PR**
- ◆ Slip Resistant
- ◆ Puncture Resistant
- ◆ Shock Absorbing Composite Foam Midsole
- ◆ Rugged Rubber Outsole
- ◆ Aegis Microbe Shield® Controls Odor, Staining, Deterioration



**Men's Bearcat Comp Toe
6020 Black
6021 Brown**
Size 6 - 11.5, 12, 13, 14
1234600321

LIGHT WEIGHT



**Women's Bearcat Comp Toe
620 Black
621 Brown**
Size 6 - 10.5, 11
1234600321



**ASTM F 2413-18
M I C EH**

**ASTM F3445-21
SR Slip-Resistant**

- ◆ Composite Safety Toe
- ◆ "Walking on Air" Removable Polyurethane Footbed
- ◆ **18** Waterproof Upper Leather

- ◆ **ASTM F 2413-18 M/I/C EH**
- ◆ Electrical Hazard
- ◆ Shock Composite Foam Midsole
- ◆ Aegis Microbe Shield® Controls Odor, Staining, Deterioration

- ◆ Full Grain Leather Upper
- ◆ Lightweight Construction
- ◆ Non Metal Construction
- ◆ Oil & Slip Resistant
- ◆ Rugged Rubber Outsole

Endrina® by Genuine Grip®

Protection with Style

Camila



351 Caramel Comp Toe

Women: 6 - 10.5, 11
1233750321



350 Black Comp Toe

Women: 6 - 10.5, 11
1233750321



352 Chocolate Comp Toe

Women: 6 - 10.5, 11
1233750321

Protection with Style

Selena



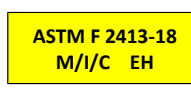
361 Caramel Comp Toe

Women: 6 - 10.5, 11
1233750321



360 Black Comp Toe

Women: 6 - 10.5, 11
1233750321



- Ultra Lightweight
- Genuine Grip® Slip-Resistant Rubber Outsole with Superior Grip
- Polyurethane Cushion Massaging Insole
- Composite Foam Cushion Midsole
- Durable Microfiber Upper

- Composite Safety Toe
- ASTM F2413-18 F/I/C EH
- Aegis Microbe Shield® Controls Odor, Staining Deterioration
- Electrical Hazard
- Oil Resistant
- Water Resistant

Protection with Style



"Walking on Air" Polyurethane Memory Foam Insoles



- ◆ "Walking on Air" Polyurethane Insole
 - ◆ Memory Foam to Provide Maximum Comfort
 - ◆ Aegis Microbe Shield® Controls Odor, Staining, Deterioration
 - ◆ Moisture Absorbing Antimicrobial Mesh
 - ◆ Ergonomic Design with Arch Support
 - ◆ Enhance Ball Cushion with Air Circulation Design
- 1230900321



Men	4	5	6	7	8	9	10	11	12	13	14
Women	6	7	8	9	10	11	12				

NEW

**Genuine Grip®
Overshoes**



SIZE	XS	S	S+	M	M+	L	XL	XXL
MEN	3-4	5-6	6.5-7.5	8-9	9.5-10.5	11-12	13-14	15-16
WOMEN	5-6	7-8	8.5-9.5	10-11	11.5-12.5			

- Genuine Grip® Slip-Resistant Rubber with Superior Grip
 - All Rubber
 - Oil Resistant
 - Waterproof
- 1231275321

S Fellas® Footwear

Genuine Grip® Footwear

141 Lanza Ave. Bldg. 18C Garfield, NJ 07026

Tel. 877-258-0580 Fax. 877-258-0581 www.GenuineGrip.com