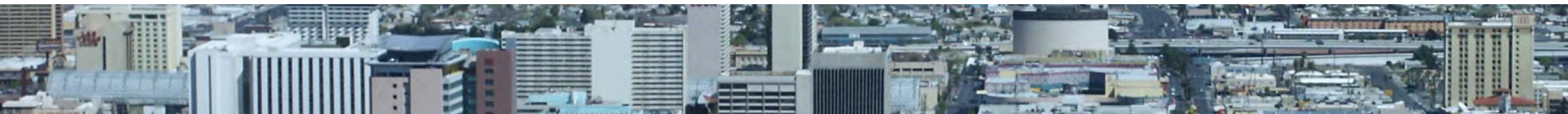




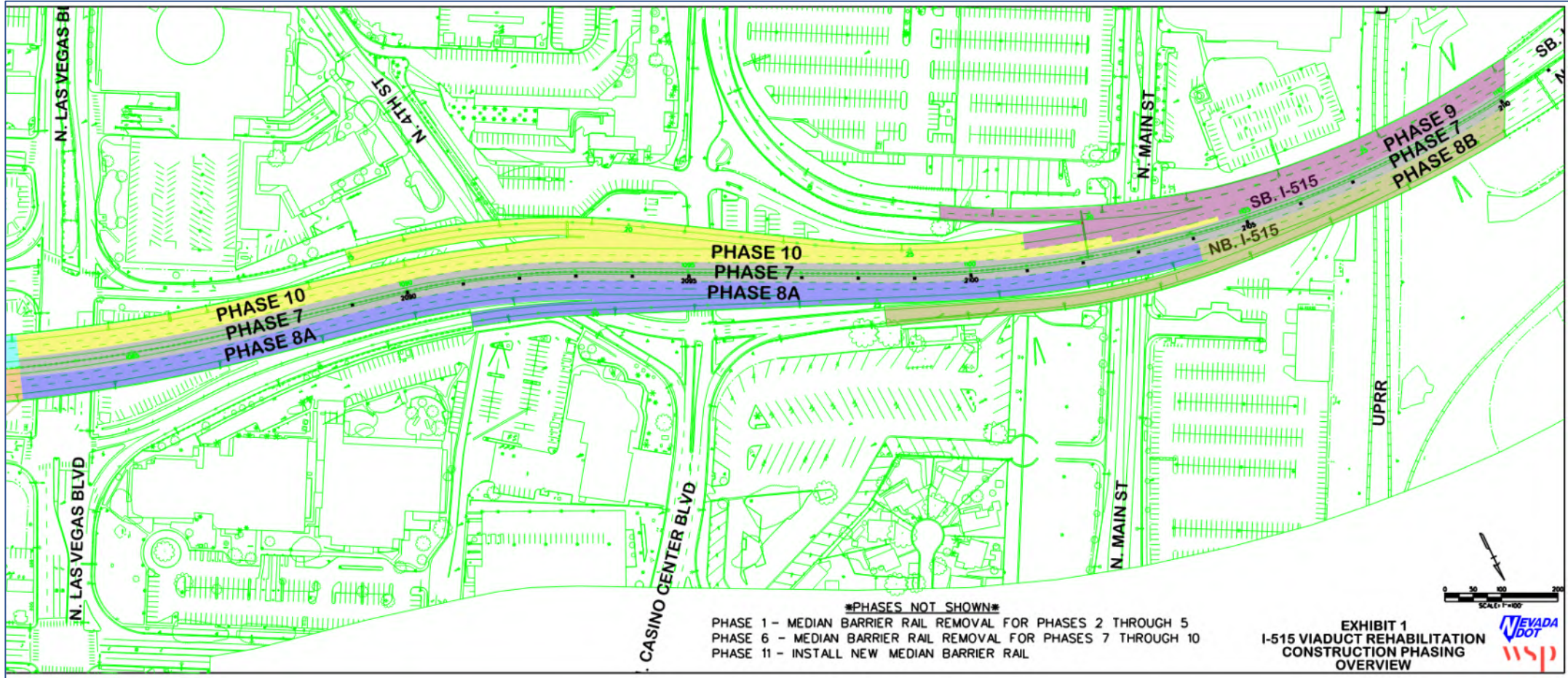
CONSTRUCTION PHASING

Virtual Public Information Meeting
February 2 – February 16, 2021

CONSTRUCTION PHASING



CONSTRUCTION PHASING



TRAFFIC CONTROL SUMMARY

| Traffic Control Phase | Work Zone | | I-515 SB Lanes Open | I-515 NB Lanes Open | Ramps Closed | See Note | Estimated Durations (see Note 3) | |
|-----------------------|-------------------------|-------------------------|---------------------|---------------------|--|----------|-------------------------------------|-------------|
| | From | To | | | | | Working Days | 6-Day Weeks |
| Phase 1 | Eastern Ave | Casino Center Blvd | 2 | 2 | None | | 31 | 5.2 |
| Phase 2 | Eastern Ave | 11 th Street | 2 | 2 | Eastern Ave – NB on ramp | 4 | 29 | 4.8 |
| Phase 3 | 11 th Street | Las Vegas Blvd | 2 | 2 | Las Vegas Blvd – NB off ramp | | 11 | 1.8 |
| Phase 4 | 15 th Street | Las Vegas Blvd | 2 | 2 | Las Vegas Blvd – SB on ramp | | 16 | 2.7 |
| Phase 5 | Eastern Ave | 15 th Street | 2 | 2 | Eastern Ave – SB off ramp | 4 | 26 | 4.3 |
| Phase 6 | Casino Center Blvd | Main Street | 3 | 3 | Casino Center Blvd – SB off ramp | | 63 | 10.5 |
| Phase 7 | Las Vegas Blvd | UPRR | 2 | 2 | None | | 57 | 9.5 |
| Phase 8A | Las Vegas Blvd | Main Street | 2 | 2 | Las Vegas Blvd – NB on ramp | 1 | 32 | 5.3 |
| Phase 8B | Las Vegas Blvd | UPRR | 2 | 2 | Las Vegas Blvd – NB on ramp Casino Center Blvd – NB on ramp | | 15 | 2.5 |
| Phase 9 | Casino Center Blvd | UPRR | 2 | 2 | Casino Center Blvd – SB off ramp | | 26 | 4.3 |
| Phase 10 | Las Vegas Blvd | Main Street | 2 | 2 | Las Vegas Blvd – SB off ramp | | 30 | 5.0 |
| Phase 11 | Eastern Ave | City Parkway | 2 | 2 | None | | 34 | 5.7 |

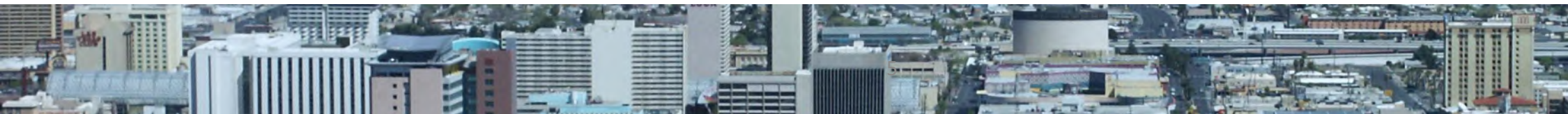
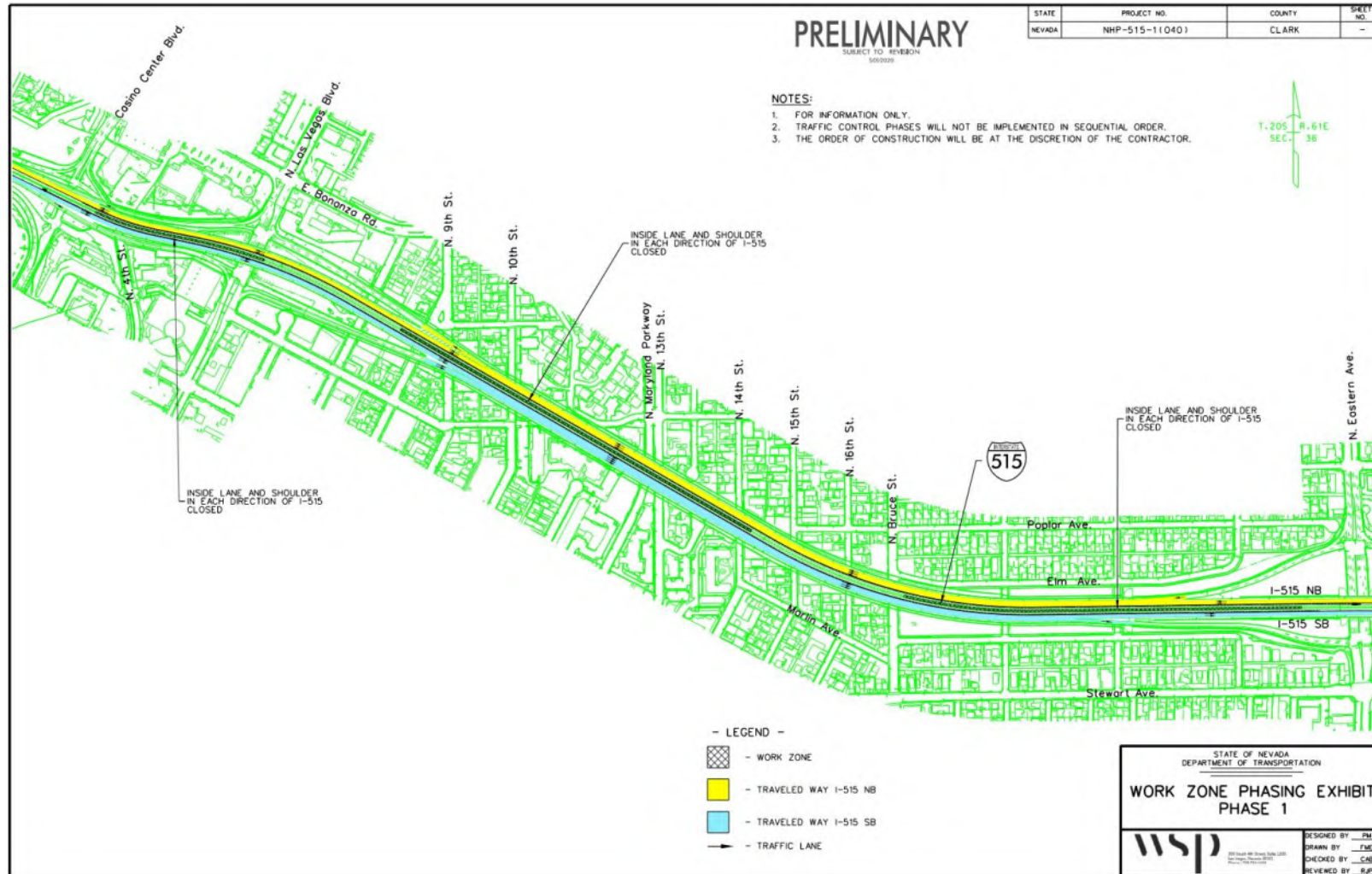
370 days

62 weeks

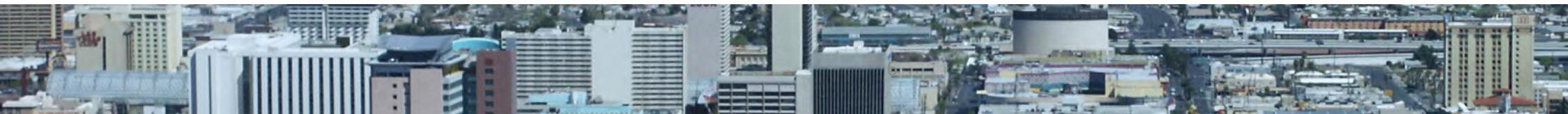
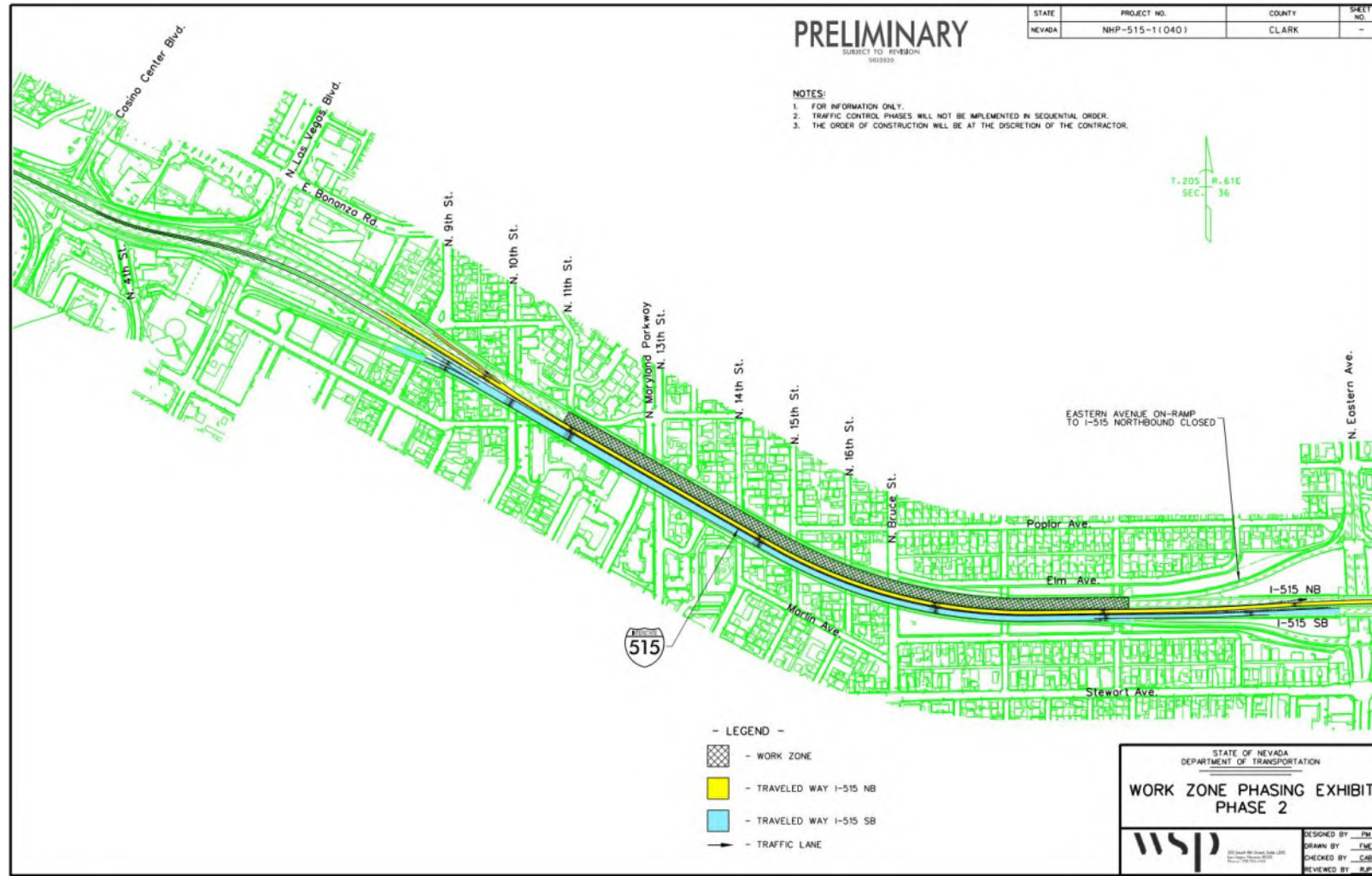
NOTES:

1. During Phase 8A the Casino Center Blvd NB on ramp will be open, but to SB I-15 only.
2. Traffic control phases will not be implemented in sequential order; the order of construction will be determined by the contractor.
3. The durations shown for the traffic control phases are estimates, and do not reflect incentivized schedule acceleration. The actual durations of the TC phases and schedule acceleration, if any, will be determined by the contractor.
4. Replacement of the I-515 bridge over Eastern Avenue will be combined with Traffic Control Phases 2 and 5.
5. A maximum incentive of \$1.38 M will be earned if the contractor completes the work in 285 working days (85 working day reduction).

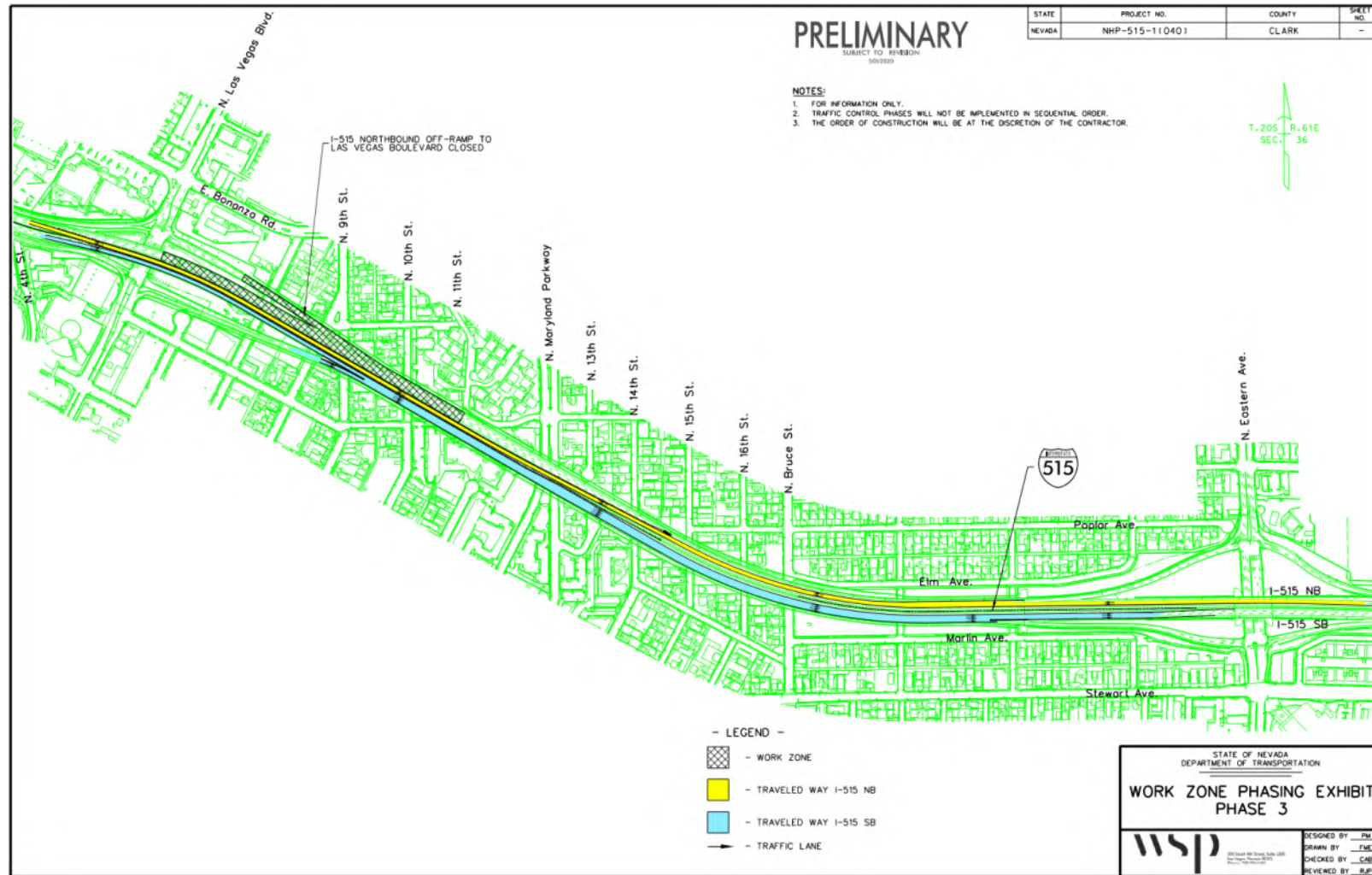
TRAFFIC CONTROL



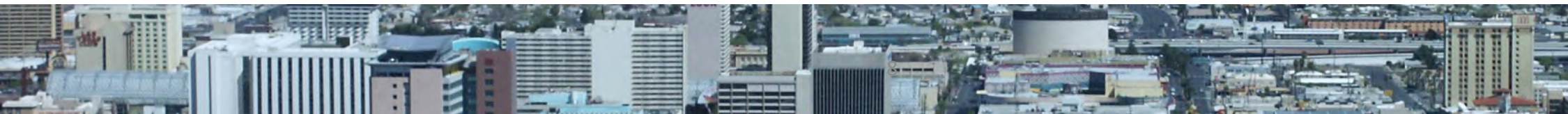
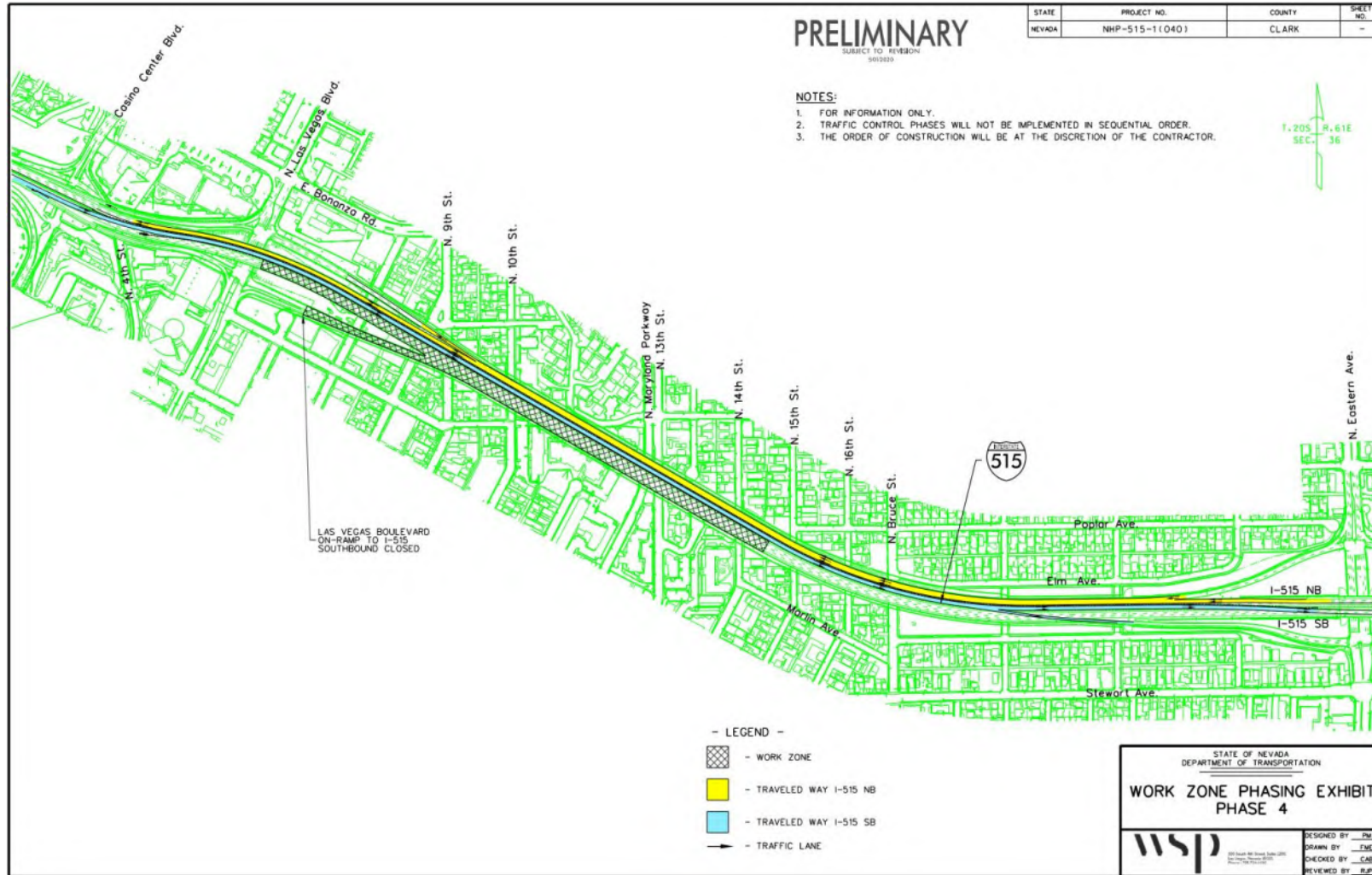
TRAFFIC CONTROL



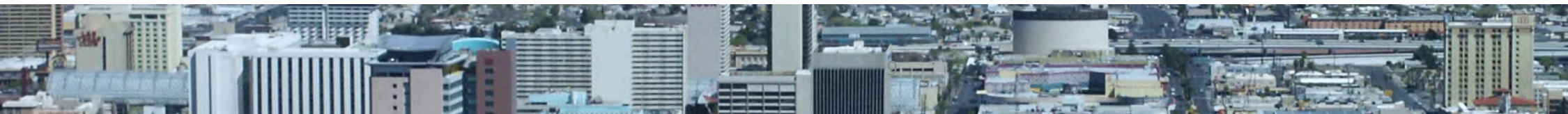
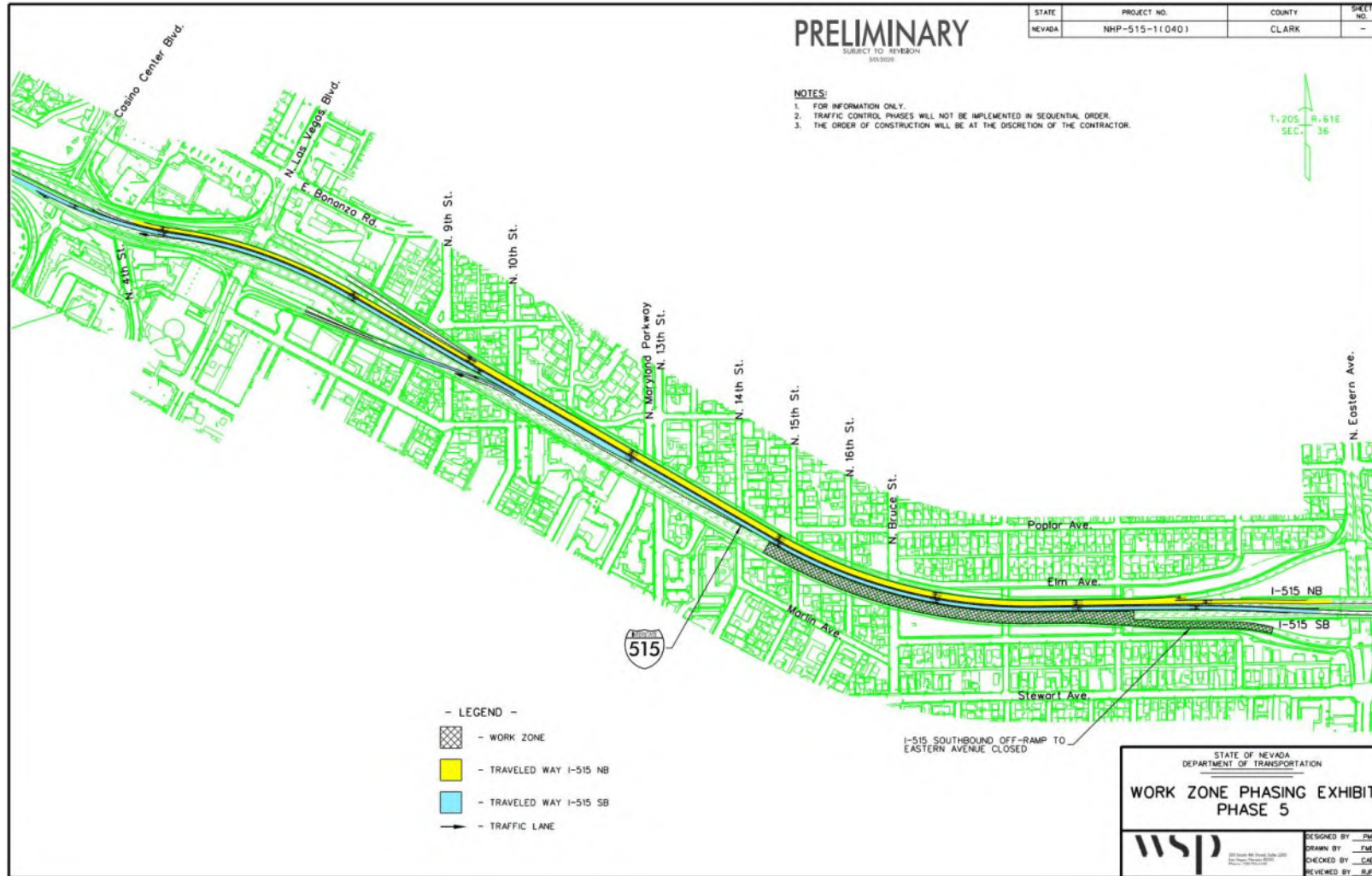
TRAFFIC CONTROL



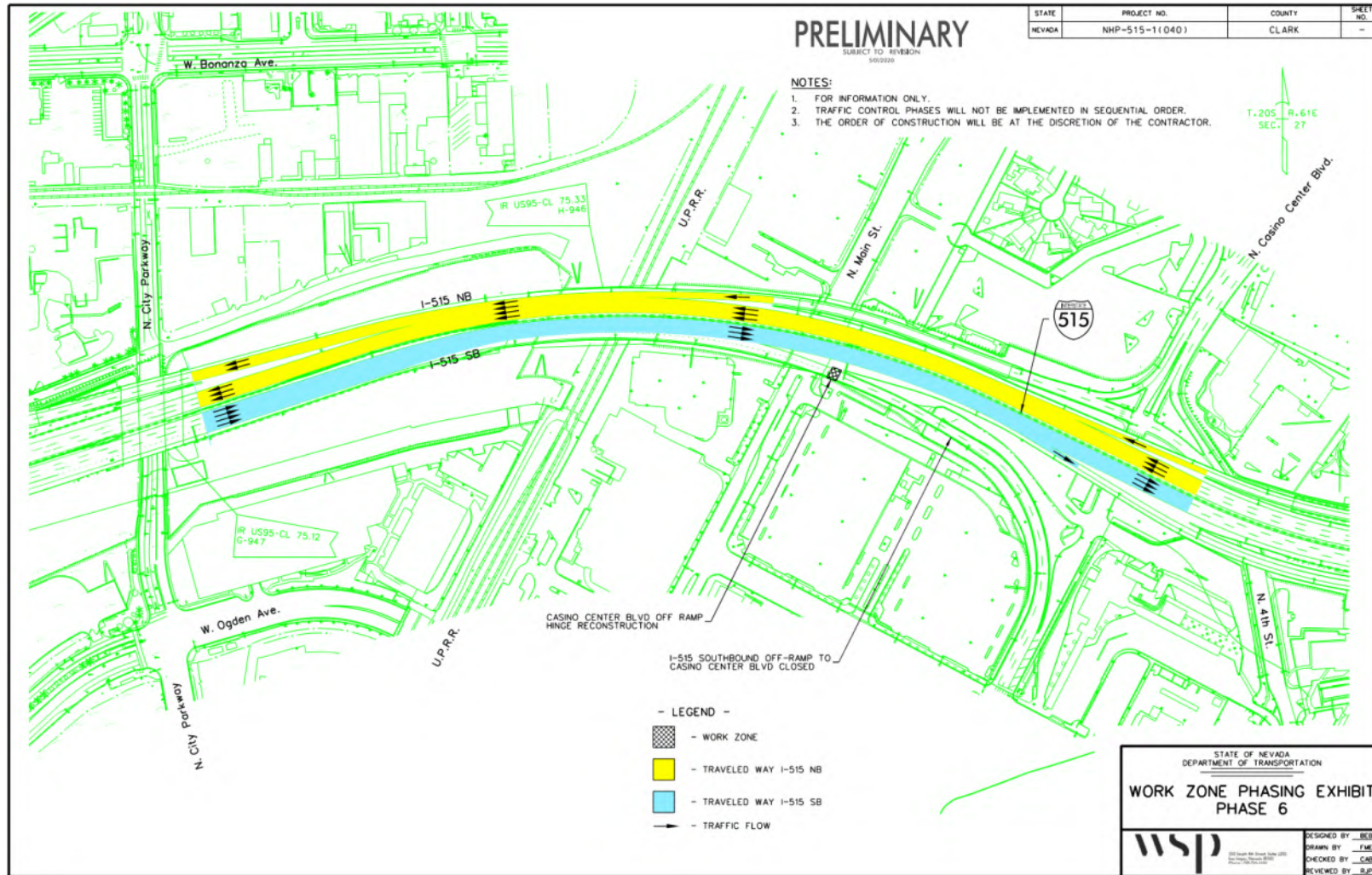
TRAFFIC CONTROL



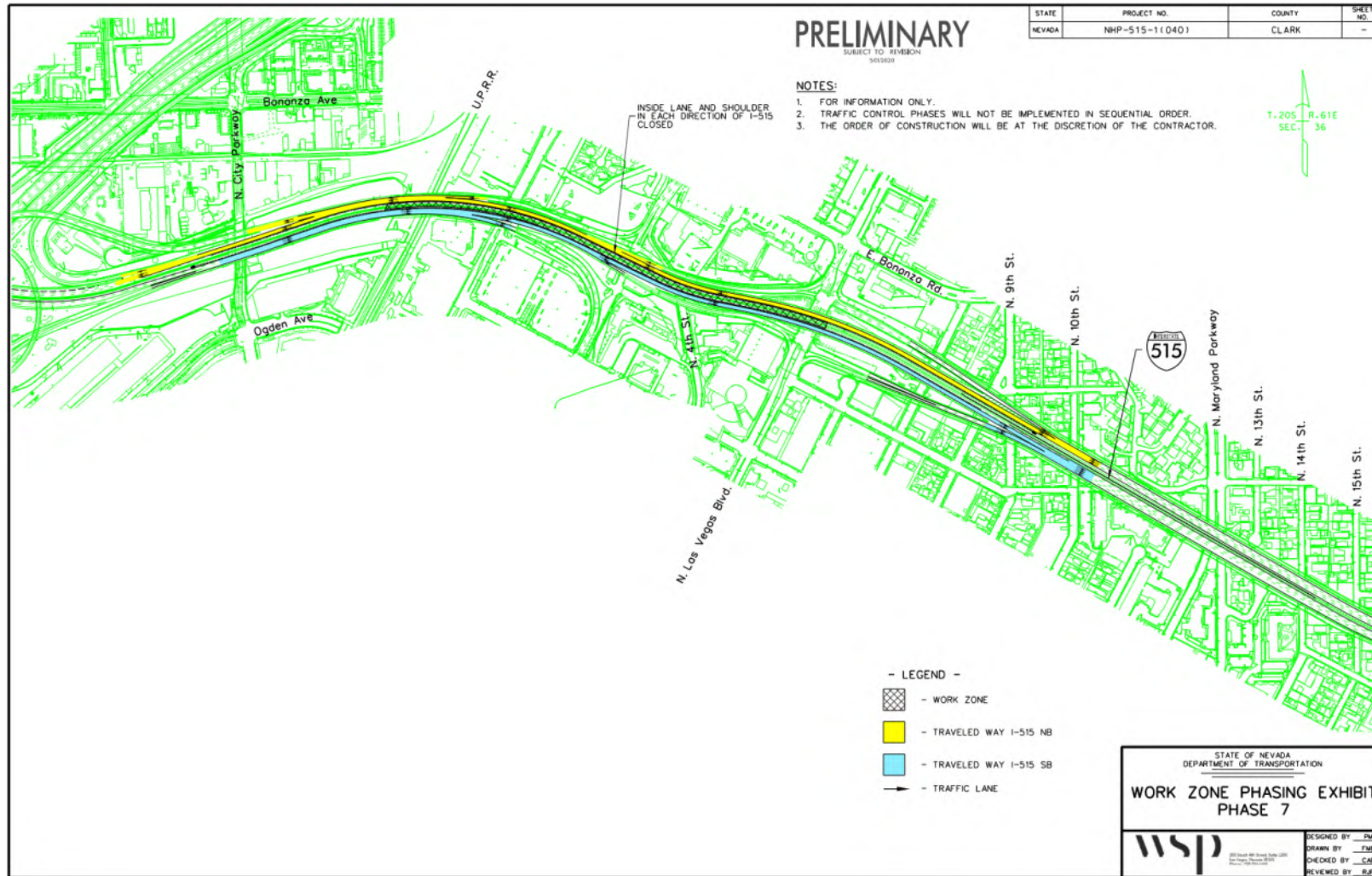
TRAFFIC CONTROL



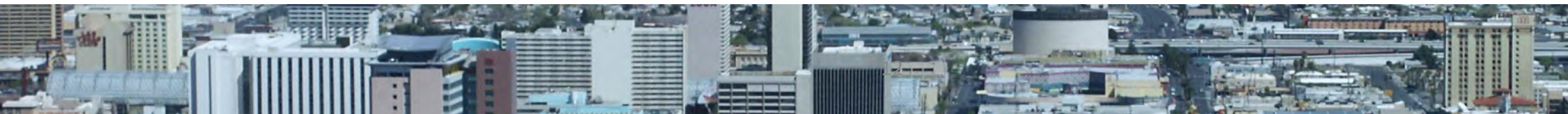
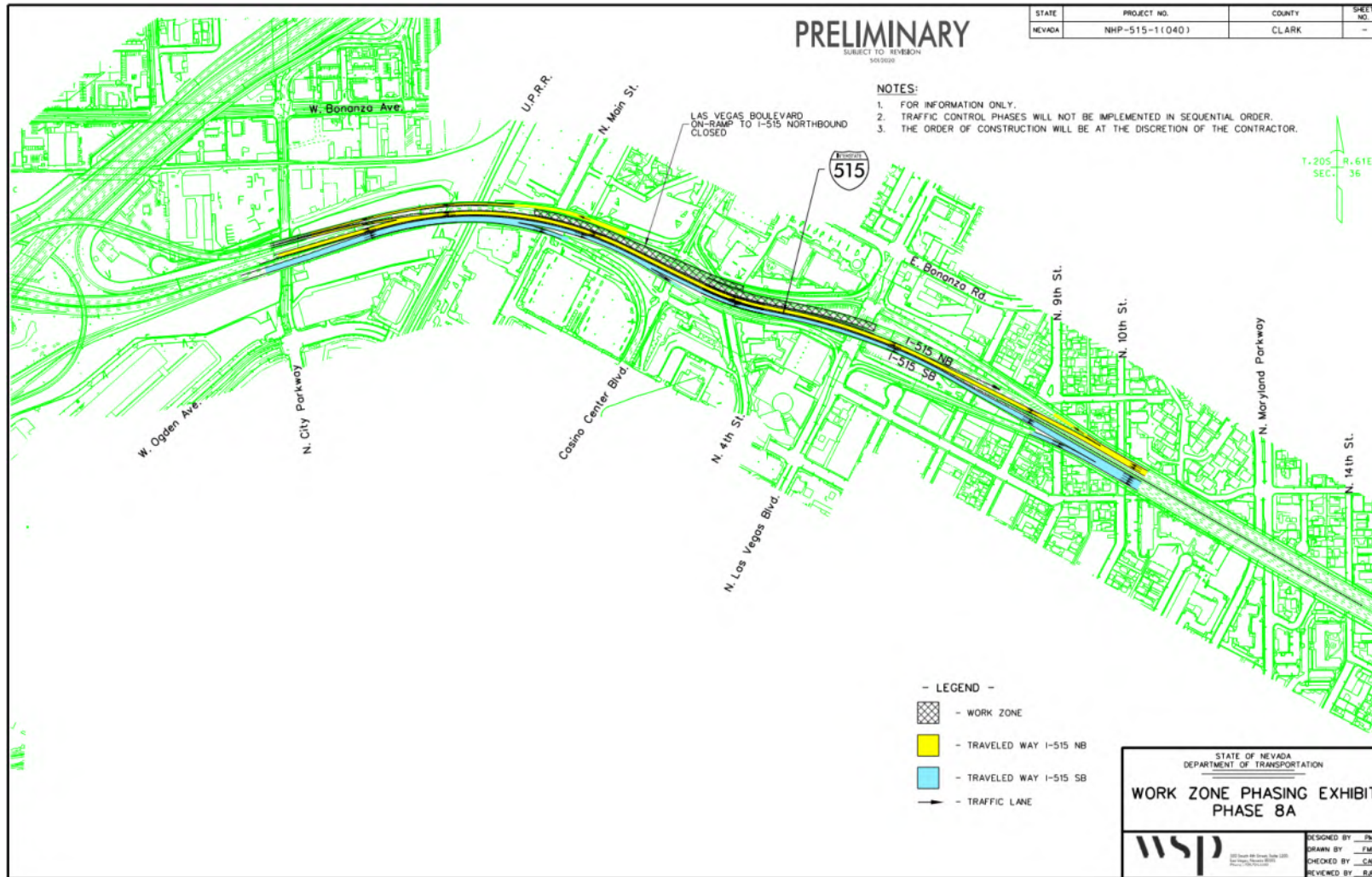
TRAFFIC CONTROL



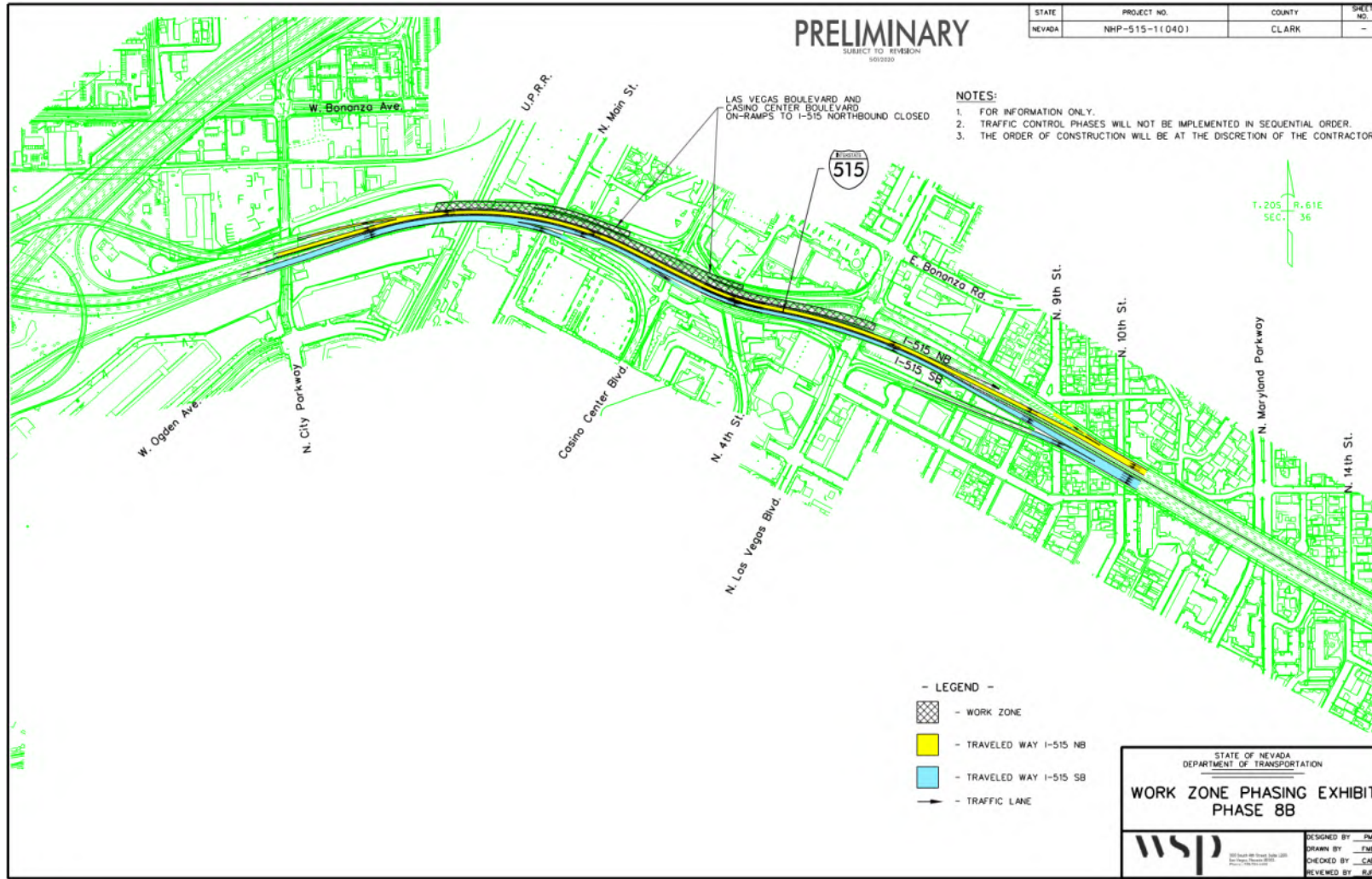
TRAFFIC CONTROL



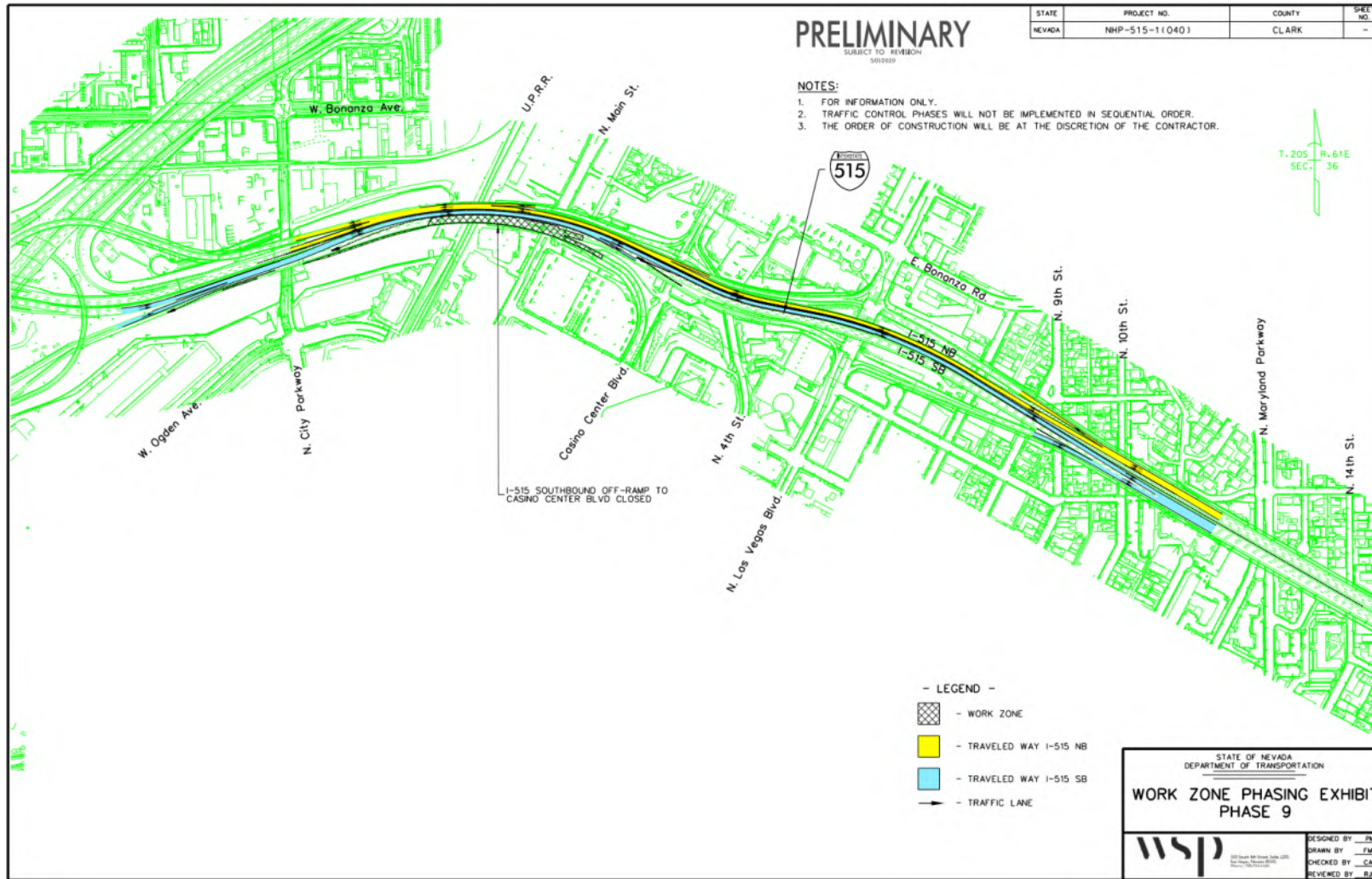
TRAFFIC CONTROL



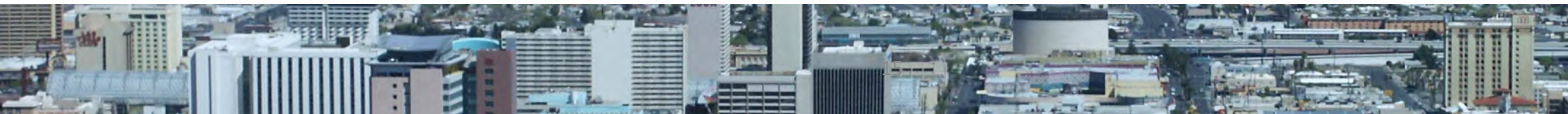
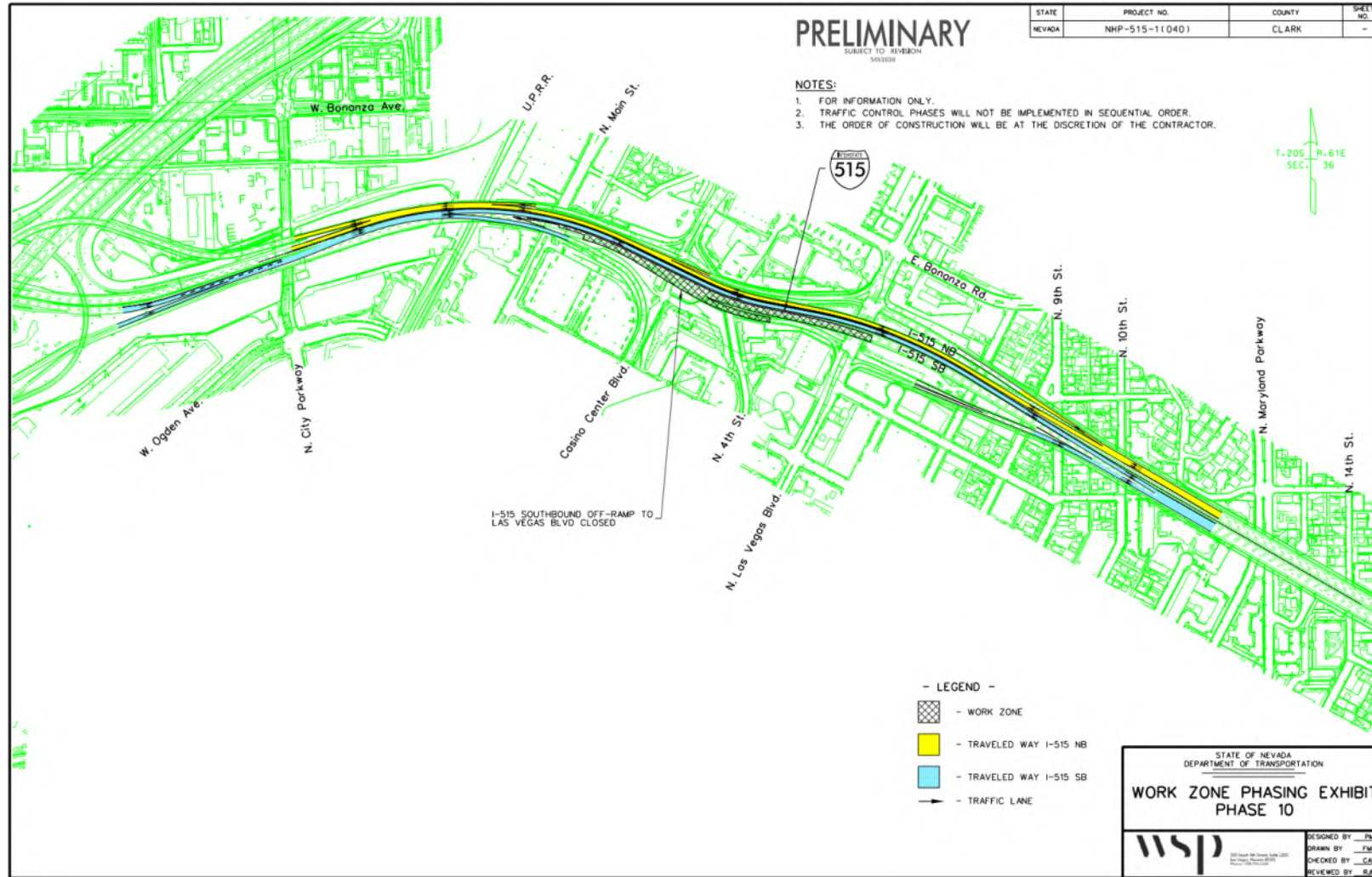
TRAFFIC CONTROL



TRAFFIC CONTROL



TRAFFIC CONTROL



TRAFFIC CONTROL

