



Mililani Hongwanji
P.O. Box 893308
Mililani Town, HI 96789

Non-Profit Organization
U.S. Postage Paid
Permit No. 2
Wahiawa, HI 96786

Address Service Requested



Dharma Connection

April 2022

The Newsletter of Mililani Hongwanji Buddhist Temple

Volume 45 Issue No. 4

WE ARE FULLY OPEN

Welcome back! We are reverting to our traditional Sunday Services. With the end of the mask mandate for indoor activities, our Sunday Services will include singing, chanting, and socializing in temple facilities. This has been a long time coming and many have not been to temple in awhile. Of course you can continue wearing masks and social distancing if you choose. Other temple activities are starting up again however, you should contact your program coordinators for specific details.

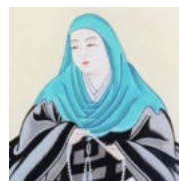
Namo Amida Butsu

April 2022

May 2022

- 2 1:00pm Hanamido Decorating
- 3 9:00am **Hanamatsuri (Buddha's Birthday)**
Family Dharma Service
- 3 10:00am Dharma School Activity
- 10 9:00am Joint Memorial & Family Dharma Service
- 10 10:00am BWA Monthly Meeting
- 17 9:00am **BWA Eshinni and Kakushinni Service**
- 17 10:00am Dharma School Activity
- 24 9:00am Family Dharma Service
- 24 10:00am Dharma School Activity

- 1 9:00am Family Dharma Service
- 1 10:00am Dharma School Activity
- 8 9:00am Joint Memorial and Family Dharma Service
- 8 10:00am BWA Monthly Meeting
- 15 9:00am Family Dharma Service
- 15 10:00am Dharma School Activity
- 22 9:00am **Gotan-e** (Shinran's Birthday, Family Dharma Service & Last Day of Dhar-
- 29 9:00am Family Dharma Service



All Family Services can be accessed through Mililani Hongwanji and 'Ewa Hongwanji's Facebook Pages and also through the Mililani & 'Ewa Hongwanji Facebook Channel (Simply type: shorturl.at/evwCU in the web address space on your browser for YouTube) (SUBJECT TO CHANGE)



Minister's Message



What is YOUR Theology?

As a fourth generation Asian American growing up in Hawai'i and going to a Buddhist Elementary School, I was introduced to a form of Buddhism that was based on ministers whose primary language was Japanese and lacked the vocabulary to explain even the simplest concepts and understanding of Jōdo Shinshū Buddhism.

I think for many of you, you can relate to what I am saying. With that being the case, many times, the minister struggled to find a word that they knew or thought to mean in their native language, which sometimes is incorrect. However, we carried on that thought for many years, and passed it on to the next generation.



So now, as more and more ministers are proficient at English, and more and more books are published in English, we are at a crossroad to the understating of what really is going on in Buddhism. Do we maintain what we learned years ago, as word, or do we attempt to understand what the younger generation or understanding is?

For many, our understanding of Buddhism is based on our experiences over the years, and what has been passed on to us. We call this one's Embedded Theology. Embedded Theology turns in to Deliberate Theology when we hear the Dharma, get a better understanding of the Dharma, and live our lives in that understanding.

So then the question now becomes, "What is my embedded theology?" Shinran states, "As for me, I simply accept and entrust myself to what my revered teacher told me, "Just say the nembutsu and be saved by Amida"; nothing else is involved." We see here this change over from embedded to deliberate. He understood that he must say the Nembutsu and be save." But how" For years he contemplated that. Finally, he understood that there is nothing that he could do except entrust and accept what his teacher told him, "JUST say the nembutsu and be saved by Amida."

For us, it's easier said than done. We cannot be able to just accept. We have all these ideas going on in our head. "How do I say it?", "Do I have to say it loud?", "How do YOU do it?", "What if I say it only before I eat?" The list goes on and on.

This is the ego side of us, and that is what always get in the way of seeing things for what they really are. However, at the same time, it could be what we learned. "We MUST say it loud!" the minister may have said, but where in our texts does it say that? When we hear "Just say the nembutsu and be saved by Amida." It turns this embedded theology to a deliberate theology that fits into our Nembutsu Teachings.

In April, we celebrate the birth of the Historical Buddha. In that, let us reflect on where our own personal theology stands. As we hear the Dharma, and as we practice the recitation of the Nembutsu, we will slowly start to see ourselves start to evolve into that true entrusting person of Nembutsu. The Buddha sought to clarify his own theology to pain and suffering and left it for us to reflect on and understand. Now it's our turn to clarify our own theology and reflect on it.



Rev. David Fujimoto



From Your Kyodan Board Summary of March 9, 2022 Meeting

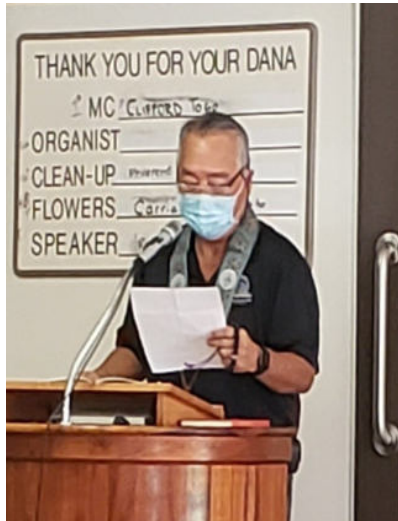


- The Mililani Hongwanji Board of Directors met via ZOOM and in-person with a quorum. Immediate Past President Dean Sakamoto conducted the meeting.
- Cliff Togo presented the Treasurer's Report for the month ending February 2022. Report reflected the 2022 Approved Budget amounts. Bank of Hawaii's online bill payment service has expedited the payment process and saves the temple funds. Checking account balance reflected the transfer of \$50,000 into the CIP account.
- Finance Committee Chair Gordon Watanabe presented a Revised Operating Budget for 2022. A few line items were amended with updated information. The proposed Amended Budget was approved.
- Reverend's parsonage appliances (washer/dryer) needs to be replaced. To be funded with CIP funds.
- Kumon's facilities use contract will be renewed for another year with same terms and conditions.
- Rene Mansho & Claire Doi will be co-chairs for the BOD Nominating Committee.
- Mililani Town Association (MTA) will hold a Sr. Health & Hobby Fair on May 18, 2022, 9:00 am—1:00pm. Mililani Hongwanji will participate. MH parking lot will be used.
- Temple to purchase 25 folding "Z" mats for martial arts program.
- Updated Membership Handbooks to be mailed shortly.
- For planning purposes, the 2022 Bon Dance will be a traditional in-person live event as done prior to the pandemic. It is planned for the Admissions Day weekend, August 19 & 20, 2022. Volunteers are needed to make this a success. Please KOKUA.
- Sangha Day, an Oahu Hongwanji District Council family fun activity at Blaisdell Park planned by Aiea Hongwanji was well attended by Mililani Hongwanji.
- Various reports from VPs and unit representatives were presented.
- A report from Adopt-a-Highway Coordinator Tyler Oshiro was circulated. Will re-introduce the sign up sheet. More and new volunteers are needed to lessen the workload. May 21, next clean-up.
- BWA held its first in-person meeting this month since the pandemic. BWA's Zippy's Fundraiser is in full swing. Redemption deadline is April 30. Eshinni Kakushinni day service on April 17, light lunch to be served.

Celebrating 45 years!



Established in 1977



April Memorials

Those who have passed during the month of April.

George Ando	Carl Mutobe
Susumu Ando	Hatsue Nakagawa
Tsuruko Asato	Anna Nakamura
Chad Cortez	Yaeko Nakaue
Hatsuno Fuji	Makoto Nishioka
Flora Fujimoto	Edith Ohara
Jane Hamamoto	Susumu Ono
Tsuki Hashimoto	Sumie Rodero
Satsuma Hayashi	Donald Sakahara
Gilbert Hirano	Beatrice Sato
Nancy Hirata	Noboru Sato
Larry Hyakumoto	Ronald Minoru Sato
Kona Itagaki	Kazuki Tanioka
Kenichi Ito	Saichi Tanioka
Masanobu Kawahara	Masayuki Tashima
Chiyoko Kayatani	Sally Tateishi
Kay Yukiko Kobayashi	Hatsue Togashi
Shinichi Mashiba	Toby Tsunozumi-Shin
Mitsuko Masuda	Benton Yamanaka
Taka Matsumoto	Inao Yoshino
	Dianne Yoshizawa

Please call the minister at (808) 625-0925 and/or email dharma.connection@gmail.com if there are corrections or additions to the published list. Families may call the minister to schedule special family memorial services for their loved ones. For 2022, special memorial years are observed for loved ones who passed away in:

2021 1st Year	2006 17th Year	1990 33rd year
2020 3rd Year	1991 23rd Year	1973 50th year
2016 7th Year	1998 25th year	1923 100th year
2010 13th Year		

2022 Adopt-A-Highway Schedule

- **February 19th**
- **May 21st**
- **August 27th**
- **November 19th**



Meet at the temple at 8am to help with our quarterly Saturday trash pick up community service





BWA News

As we near the end of long COVID restrictions, there will no longer be Zoom as part of our meetings. Hereafter, meetings will be held in-person in the education building. We wish to thank Program Chairs, Joyce Ogawa and Janice Yasunaga, for coordinating the preparation and serving of the zenzai. After a 2-year hiatus, it was wonderful to welcome back such a delectable treat, said to be a favorite of Shinran Shonin. Thank you to all who had a hand in serving this. In observance of Eshinni-Kakushinni/Peace Day on April 17, we will have Barbara Brennan as guest speaker on videotape. Eshinni was the wife of Shinran Shonin, and Kakushinni was the youngest daughter of Eshinni and Shinran Shonin. Both women are important in their influence of Jodo Shinshu Buddhism. The role of Eshinni became apparent through the letters she wrote, which were discovered in 1921, describing important historical events during Shinran Shonin's life. Kakushinni is considered the protector of Shinran Shonin's legacy. The BWA will provide a light lunch that day.

To prepare for Hanamatsuri on April 3, the Religious Services Committee is making an appeal to all Sangha members to help with the decoration of the Hanamido on April 2, at 1:00 pm. If you have flowers or green foliage to donate, or questions in general, please contact Claire Doi.

Looking ahead, we are very happy to report that O-Bon is a "go" this year. Co-Chairs of the event, Cliff Togo, Dean Sakamoto, and Rev. Fujimoto, welcome any help and suggestions you may have. This is a huge undertaking -- especially after a 2-year absence, so please give of your time and kokua to make this a success as in years past.

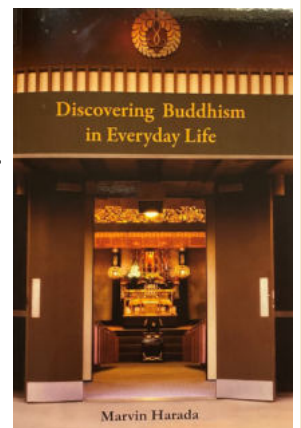
Did you know we have a great library...

right within our temple's walls? Located on the wall adjacent to the men's restroom, is a bookshelf full of excellent books on everything Buddhism. Go check it out next time you're at temple. Feel free to borrow any book. You don't need a library card—just let Rev. Fujimoto know that you're borrowing a book.

A recent addition to our library is "Discovering Buddhism in Everyday Life" by Bishop Marvin Harada. We acquired 6 copies of the Bishop's book through the generous donations received as part of the 2021 Spring Nembutsu Seminar sponsored by the Honolulu and Oahu Hongwanji Councils and the Office of Buddhist Education. Bishop Harada, who is the current Bishop of the Buddhist Churches of America, was also the seminar's guest speaker and spoke about "Buddhism & Everyday Life."

From the book's introduction Bishop Harada shares, "Buddhism is all around us, if we have the eyes to see it, the ears to hear it, and the heart to feel it. Quite often we tend to think that Buddhism lies in books, or libraries, or in the brains of Buddhist masters and teachers. I think that Buddhism, the truth of the Dharma, lies nowhere then right in front of my own eyes."

The book is filled with short stories as told by Bishop Harada of seeing Buddhism in our everyday life and sharing examples from Shin Buddhists whose everyday life experience is their greatest teacher. It's a very easy read full of heartfelt and impactful stories. So please consider borrowing and reading it soon!





Dharma School

We had a great lesson on February 27th led by Ms. Jill who read the book, "Change Sings: A Children's Anthem" by Amanda Gorman. The book was a musical journey of hope and inspiration that will remind us all that change is good and necessary.

Ms. Jill then reviewed Rev. Fujimoto's Dharma talk about the current conflict and suffering in Eastern Europe. She then read "Dogku", a story of a homeless dog that finds a home with a nice family, written all in haiku. The students were then asked to write a haiku poem. Most students chose to write about peace and ending conflicts.

On March 20th, we played Buddhist bingo or Shin-o. The students were first tasked to create their own Shin-o playing card. Each column had words that represented the Teachings, People/Places, Items, Eightfold Path or Observances. Everyone received cool prizes. We were also happy to have the Osborne family, who were temple members before they moved away ten years ago, participate in our class during their visit to the islands.



The students and Dharma School 'ohana will be again creating and sending out Spring cards to some of our temple members to celebrate Spring and Hanamatsuri.

On Sunday, March 27th, we watched the movie, "Encanto", our first movie day in a long time! The movie was about the family Madrigal, whose members each get a magical "gift" except for young Mirabel.

Here is our schedule for April:

Sunday, April 3rd, 10am (Hybrid class): Famous Buddhist Figures project presentation

Sunday, April 17th, 10am: The Golden Chain presented by Danny Noia

Sunday, April 24th, 10am: Mother's & Father's Day Craft

If you know a student (preschool to high school), in Mililani, Hawaii, or even on the mainland, who would like to join in on our sessions, please contact Claire Doi at clairedoi@hawaiiintel.net to be added to our email list to get our meeting agendas and links. Or please feel to contact us if you have any questions or need more info about our Dharma School sessions.

Decorating the HANAMIDO Saturday, April 2nd, 1:00 p.m.

To the Mililani Sangha and Dharma School families! Please join us in decorating our Hanamido (floral altar in preparation for our Hanamatsuri Service celebrating Buddha's Birthday on Sunday, April 3rd

We will be meeting at the temple on SATURDAY, April 2nd at 1:00 p.m.! We welcome any flowers or greenery that you can donate! Let's have fun decorating while enjoying the sangha!

Any questions, please contact the Religious Service Committee or Claire Doi, email: clairedoi@hawaiiintel.net





**Our Interdependent Lives:
Food Waste and Sustainability**

A Zoom event on food waste reduction, composting with worms, and "going compostable" at Obon.

Saturday, April 16, 2022 10 AM HST / 1 PM PDT

Jointly sponsored by:

- Buddhist Churches of America, Social Welfare Committee
- Honpa Hongwanji Mission of Hawaii, Committee on Social Concerns

Two speakers will address different aspects of food waste reduction with an emphasis on what we can do in our homes, temples, and organizations.

A Q&A will follow.

An opening and closing by Buddhist ministers — Rev. Blayne Higa of Kona Hongwanji and Rev. Don Castro of Seattle — will help make the connection to the dharma.

[Register Online »](#)

(goes to a Google form at <http://honpahi.link/foodwaste>)

Registering allows us to send you the Zoom link and an event reminder.

Mindy Jaffe- Co-founder & Coordinator, Windward Zero Waste School Hui, Owner, Waikiki Worm Company. Mindy is a longtime champion of waste reduction through composting for homes and institutions. She is the co-founder and coordinator of Windward Zero Waste School Hui, a partnership of Windward Oahu schools working cooperatively in the pursuit of waste reduction, soil restoration, and applied environmental education. She is the owner of Waikiki Worm Company, founded in 2004, which provides worms for home vermicomposting.

Ron Hamakawa - Seattle Betsuin Buddhist Temple - Ron is a district manager in food and nutrition services, serving multiple healthcare institutions across Western Washington. As chair of Seattle Betsuin Buddhist Temple's Bon Odori, Ron managed the move to all compostable food containers and utensils for the 2-day festival and other Betsuin event over 10 years ago. The program includes the collection of food waste, food-soiled containers/utensils, PET bottles, aluminum cans & cardboard in designated bins which are sent to local composting or recycling facilities. Ron also advises the year-round composting/recycling/waste program at the temple.

2022 SPRING VIRTUAL NEMBUTSU SEMINAR
Sponsored by the Honolulu & Oahu Hongwanji Councils and the Office of Buddhist Education

**Building Sangha Together:
Nurturing Dharma - Centered Communities**

Saturday April 30 | 9a - 11a (HST)

Community has always been a strength of Shin Buddhism in America. Innovative and responsive community building grounded in the Dharma has enabled temples to thrive for more than a century. However, the traditional ways of building Sangha have been less effective as we face new challenges during this time of pandemic. Rev. Blayne will explore what it means to be Sangha in today's world. How do we journey together as spiritual friends? And how can we nurture an authentic community of fellow travelers inspired by the Buddha's teachings? Participants will have an opportunity to cultivate Sangha through a facilitated group discussion.



Reverend Blayne Higa
Kona Hongwanji Buddhist Temple

"Bring your whole self as we learn & grow in the Dharma together."

AGENDA

- 9:00am - 9:05am: Welcome
- 9:05am - 9:45am: Guest Speaker Rev. Higa
- 9:45am - 9:55am: Q & A Session
- 9:55am - 10:00am: Break
- 10:00am - 10:30am: Breakout Group Discussion
- 10:30am - 10:55am: Breakout Group Sharing
- 10:55am - 11:00am: Closing
- Until 11:30am: Free "Talk Story" Time

REGISTRATION IS FREE | Deadline April 22, 2022

Please note that the seminar will be recorded & uploaded. If you do not wish to be shown, please keep your video off during the seminar.

Donations are welcome—
Funds will be designated for Buddhist Education.



Scan here

OR

Please visit link:
bit.ly/hhmhdonate

Please make checks payable to: Oahu Hongwanji Council.
Mail registration form & checks to: Mililani Hongwanji, Attn: Nembutsu Seminar, P.O. Box 893308, Mililani, HI 96789

QUESTIONS?

Please contact Mililani Hongwanji office (808) 625-0925.
Visit our Dharma Hub for more statewide educational offerings
<https://tschawaii.org/calendar>

Name: _____ Temple/Affiliation: _____
 Email: _____ Phone Number: _____
 How did you hear about this Seminar? My Temple (email / newsletter) | Temple or other Website | Social Media | _____
Circle one OR if other, pls indicate in space
 Age Range: Please circle one Under 26 | 26-41 | 42-57 | 58-67 | 68-76 | 77+



Open Invitation to All...

**"Connecting
With Others"**

2022
Hongwanji
Slogan

**State Dharma School Gathering
Sunday, May 1, 2022**



A Commission on Buddhist Education (CBE) Project of Honpa Hongwanji Mission of Hawaii

9:30 AM: Service –
Dharma Message by Rev.
David Fujimoto of Mililani
Hongwanji Mission

10:00 AM: Breakout
Rooms
DS Sessions: Jr. YBA
Moderators
Adult Session: Rev. David
Fujimoto – "The Pale Blue
Dot" discussion

10:50 AM: DS
Families/Adult Sessions
End

11:00 AM: DS
Teachers/Educators
Gathering Session Begins

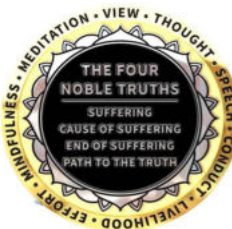
12:00 PM: End



RSVP Deadline is **April 16**.
Click on the following link to
register:
<https://forms.gle/krPJKHMqmp7VpBdA>

Any Questions?
Contact: **Debbie Kubota**
at dekub88@gmail.com

Gathering Zoom Link will
be emailed to participants
by Friday, **April 29**.



**MILILANIHONGWANJI
BUDDHIST TEMPLE
GRATITUDE COIN
REMINDS US TO BE GRATEFUL**

We are offering **Wailuku Hongwanji Mission's Gratitude Coin** to help share the Dharma and for a donation of **\$10.00**. Proceeds will be shared with **Kupuna organizations in need**.

These challenging times taught us a lot about the value of caring, helping, respect, and appreciation for others.

- Buy a coin to carry around or keep in a special place, as a reminder to be grateful for what we all have
- Give a coin to relatives, friends, and folks you meet to share our Buddhist Way, and being mindful
- It is a simple reminder of gratitude and not an Omamori or good luck charm

Please purchase Gratitude Coins by clicking on this link:

<https://bit.ly/3GPrUHe>

Mahalo for your support!

Ms. Rene Mansho - renemansho@hawaii.rr.com
ph: 808-291-6151

"Sangha Day" an Oahu District Family Fun Day

Aiea, Ewa, Mililani, Pearl City, Wahiawa, Waialua, Waianae, & Waipahu Hongwanjis



Blaisdell Park
March 6, 2022



Service, PBA Taiko Performance,
Peace Bell trek, Peace rock painting,
luggage tag making, Bingo,
Bento lunch and fellowship.





FYI.....



Mililani Hongwanji Buddhist Temple

Minister: Rev. David Fujimoto
 Kyodan Pres: Dean Sakamoto
 Mailing Address: P.O. Box 893308
 Mililani, HI 96789
 Location: 95-257 Kaloapau Street
 Mililani, HI 96789
 Email: dharma.connection@gmail.com
 Phone: (808) 625-0925
 Weekly Services: Sundays, 9:00am

Dharma Connection Publication

3 ways to get the Dharma Connection:

1) By mail—US Post Office will deliver to your mailbox.—available by request only! (This edition is online at: mililanihongwanji.org)

2) In your “inbox”—available by subscription only! If you wish to receive the Dharma Connection by email, contact: dharma.connection@gmail.com

3) download a copy from the temple website: mililanihongwanji.org

For additional information check out our Facebook Page: <https://www.facebook.com/pages/Mililani-Hongwanji-Buddhist-Temple/114271522485>

Monthly Joint Memorial Service Change



Mililani Hongwanji's monthly joint memorial service is on the **SECOND** Sunday of each month. There will be a small change in the format of the monthly joint memorial service. Mililani Hongwanji will continue to publish the names of the members and friends that will be honored in the monthly memorial services.

For families attending the joint memorial service, please sign in on the memorial service tablet on the counter, which will be made available every Sunday leading up the service.

For those who wish to add or remove family members or friends from the published list, please let Rev. Fujimoto know as soon as possible to ensure proper action.

Adult Day Center at Mililani Hongwanji

Aloha! We would like to let everyone know that we are accepting applications for Adult Day Center enrollment. Do you know anyone caring for a loved one that needs respite or help caring for their loved one throughout the day? We are welcoming new clients in our **air conditioned** facility.

For any interested new applicants, we are offering tuition assistance. Please contact our ADC Director Trece White for more information at (808) 561-2147. We are OPEN 5 Days a week Monday thru Fridays from 8am-5pm; most Saturdays upon availability with shortened hours. Early drop off can be arranged beginning at 7am.

Memorial Services

Mililani Hongwanji conducts memorial services in honor of those who have passed away. The Shotsuki Memorial Service is a general memorial service which are held monthly to remember members and friends who passed away during the month in which the memorial service is held. These services are held primarily for those individuals that do not fall in the yearly service interval cycle.

Nenki Hoyo Memorial Services are memorial services which are held separate from the monthly memorial services in yearly intervals. These separate private services can be held before, on or after the memorial dates. It is a personal opportunity to gather as a family to encounter and listen to the Buddha Dharma and remember your family members and friends who have passed on and through these services, we are able to reflect on all that we have received from them in our daily lives. It also gives families the opportunity to reconnect with members they otherwise would not see during the course of the year.

Minister's Private Visitation

Are you unable to come to the temple? Please call Rev. David Fujimoto at 808.625.0925 to request a private visit. The minister would love to reach out to you and be the bridge between you, the temple and the sangha!



Mahalo for your DANA

(February 23, 2022 to March 21, 2022)

General Donation

Nick & Clarynne Blanchard
Warren & Nora Hahn
James & Karen Nakasone
Masami & Joyce Nishimoto
Ruth Wakimura
Tomeo Yoshizawa

In Honor Of Taylor Yasunaga & Alex Chang

For Major Services & Offertory
IMO Ernest K. Wakimura



Higan Spring Service

Janet Abe
Frances Saito
Margaret Tanabe
Gordon & Lyn Watanabe
Diane Yoza

Hoonko Service

Mamoru & Ethel Kawahara

Joint Memorial Service

Michie Ando
Takashi Ando
Sharon Kaneko
Earline Kihara
Carl & Aileen Matsuda
Lawrence & Joyce Nishioka

Social Concerns(HQ)

Melvin Hayase
Sharon Kaneko
Albert & Margaret Kayatani

IMO Hayako Ando
IMO Hayako Ando
IMO Chieko Sako
IMO Eyvinn Kihara
IMO Matsuko Matsuda
IMO Kikue Iida



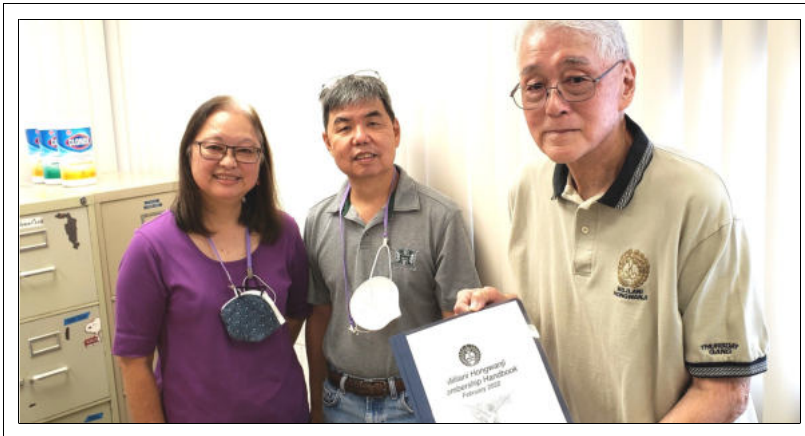
In Gratitude.
Namo Amida Butsu
Namo Amida Butsu
Namo Amida Butsu



2022 Bon Dance
August 19 & 20, 2022
A Traditional Bon Dance is being planned.
We are now seeking volunteers for this event.
Your support is needed and greatly appreciated.
Look for more information in the coming months.
Co-Chairs:
Cliff Togo, Dean Sakamoto, Rev. David Fujimoto



Photo Gallery





EWA HONGWANJI MISSION

91-1133 Renton Road Ewa, Hawaii
Mail: P.O. Box 60549, Ewa Beach, HI 96706



NEWSLETTER

April 2022

Calendar

Apr 21 (Thu)	9:00 am	Before service clean-up
24 (Sun)	11:00 am	Hanamatsuri Service
Thursdays	9:00am-11:00am 11:00am-12:00pm	Yard/temple maintenance “Exercise”



President’s Message

This year, Ewa Hongwanji will once again have an Obon Fundraiser instead of our traditional Bon Dance. It will be similar to last year’s fundraiser and we will have it on our usual Bon Dance day, Saturday, June 18 ~ 10:00am-1:00pm. Stay tuned for more information and our call for volunteers!

Have a good everyday, everybody.

In Gassho,
Craig T. Tsutsumi &
Board of Directors



Mahalo for your Donations

Donations

- Mr. Michael Sawamoto ~ General
- Ms. Amy Yamamoto ~ In memory of Mrs. Yemiko Yamamoto

Rev. David Fujimoto’s office hours at Ewa Hongwanji ~ Thursdays 9:00 am-11:00 am.
You may also contact him at 808-625-0925 (Mililani Hongwanji Office) or leave a message on Ewa Hongwanji’s voicemail at 808-681-5222.

Keep informed of what’s happening at Ewa Hongwanji - <https://bit.ly/3bKGt2f>