



Mililani Hongwanji  
P.O. Box 893308  
Mililani Town, HI 96789

Non-Profit Organization  
U.S. Postage Paid  
Permit No. 2  
Wahiawa, HI 96786

Address Service Requested

# Dharma Connection

February 2022

The Newsletter of Mililani Hongwanji Buddhist Temple

Volume 45 Issue No. 2


## WE ARE OPENING UP!... With Caution

Welcome back. We look forward to seeing everyone in person once again in 2022. Mililani Hongwanji temple activities are tentatively scheduled to open gradually. **In-person services will begin in February and we plan to provide the capability to watch the services online (either live or a recorded video).** Please refer to the temple newsletter calendar, website, and social media for current instructions and guidance as we cautiously open our doors to the public. Please be mindful as the circumstances may change with short notice. Contact your program coordinators for specific details. Your patience and understanding during this pandemic are greatly appreciated.

**Namo Amida Butsu**

## February 2022

## March 2022

- 6 9:00am Family Dharma Service  
 **In-Person Service Begins**  
**Wear Your Masks**
- 6 10:00am Virtual Dharma School Activity
- 13 9:00am Joint Memorial & BWA Dana Day  
Family Dharma Service
- 13 10:00am Monthly BWA Meeting (in person)
- 20 9:00am Family Dharma Service
- 20 10:00am Dharma School Activity
- 27 9:00am Family Dharma Service (BWA to  
serve zenzai)
- 27 10:00am Dharma School Activity

- 6 TBA Oahu District Sangha Day (TBA)  
No Service
- 13 9:00am Joint Memorial and Family Dharma  
Service
- 13 10:00am BWA Monthly Meeting
- 20 9:00am Family Dharma Service
- 20 10:00am Dharma School Activity
- 27 9:00am Family Dharma Service
- 27 10:00am Dharma School Activity



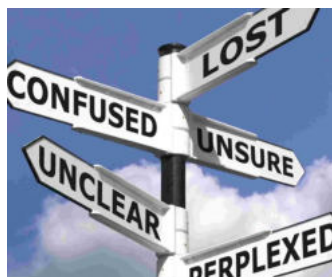
All Family Services can be accessed through Mililani Hongwanji and 'Ewa Hongwanji's Facebook Pages and also through the Mililani & 'Ewa Hongwanji Facebook Channel (Simply type: [shorturl.at/evwCU](https://shorturl.at/evwCU) in the web address space on your browser for YouTube) (SUBJECT TO CHANGE)



# Minister's Message



## What is YOUR Aspiration for 2022?



Well, we are one month into 2022. How are you feeling? With all that is going on around us, it seems like we are searching for our place in this world. It seems like we are lost and confused. We are not alone. The root to Buddha's Enlightenment and Shinran's learning the Nembutsu was all because they themselves were lost and confused. They had a hard time finding the answers they wanted. Yet, they didn't find or discover anything new.

The realization was always there, however through their own blind passions, and ignorance, the answer was hard to find, though it was always right in front of them. In the end, their quest came with us in mind. The Primal Vow embraces us, and we are the reason why the Buddha gained enlightenment. For Shinran, he had the aspiration for peace in the world and the Buddha's Teaching's spread.

The Japanese word for aspiration is 抱負 (Hōfu). Although Shinran didn't use this word exactly, the connotation is that he had an aspiration for peace in the world and the spread of the Buddha's Teachings. 抱 means to "embrace" and 負 means to "be indebted to". I find it interesting that aspiration is made up of these two characters.

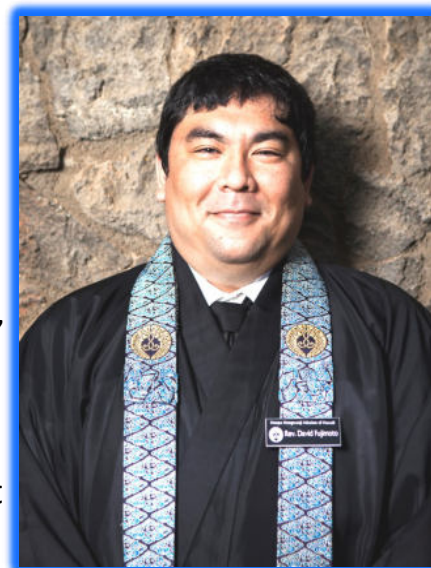
I was recently watching a video in which these three young Okinawan musicians were doing their "New Years' Greetings." Then it shifted into what their aspirations were for the year.

Of course, for typical younger people, their aspirations were to buy new clothes, study hard, and buy an ipad. Typical right? Hahahaha! For me, maybe in my "older", "matured" age, my aspiration is to continue to Shinran's aspiration for the Buddha's with my new clothes, ipad and through studying hard. After all, I will be completing my course work and progressing to my boards later this year. All that I have learned, has helped me to not only understand myself, find my place in the world, but also help others understand themselves, and find their place in the world.



in the world, but also help others understand themselves, and find their place in the world.

In this case, 抱負 as an "aspiration" does make sense. I have not only been able to embrace the new material, myself and what I am, and also, I am indebted to all that I have learned, the Buddha's Teachings, and to all of you for your continued support.



Rev. David Fujimoto



So now, as we head into February, let us all take some time to reflect on

just what is MY aspiration for the new year.....

**From Your Kyodan Board**  
**Summary of January 12, 2022 Meeting**

- The Mililani Hongwanji Board of Directors met via ZOOM with a quorum.
- Treasurer Cliff Togo presented the Final Financial Report for the Calendar Year 2021. Temple fared well considering the Pandemic environment. Highlights for the year included: Federal PPP support for salaried employee, additional rental income from Kumon, Adult Day Center continued its operation, Virtual Drive thru Bon fundraiser and CHOBA donations received. Report accepted subject to audit. Bank of Hawaii's online bill payment services and new signatories in process.
- Finance Committee Chair Gordon Watanabe and committee will be meeting via ZOOM to prepare operating budget to be submitted for approval at the February 9th Board meeting.
- Immediate Past President (IPP) Dean Sakamoto clarified that in the absence of a President, the IPP will serve as president. Various duties and responsibilities were discussed including but not limited to IT (Information Tech). VPs, board members and other members are asked to support in the various tasks of temple operations. The more volunteers we have will lessen the load for everyone. Your KOKUA, in any capacity will be greatly appreciated. Please volunteer.
- Mililani Hongwanji applied for a \$500 COVID 19 Resilience Grant from the Honpa Hongwanji Mission of Hawaii (HHMH). Financial assistance to temples in dealing with the pandemic.
- 2022 Giseikai (Legislative Assembly) will be via ZOOM on Feb. 11-12, 2022. Delegates/Observers are Rev. Fujimoto, Rene Mansho, Dean Sakamoto, Cliff Togo, and June Asato. Space is available for anyone else interested in attending. Contact Dean Sakamoto. The Oahu Hongwanji Council will submit several Resolutions at the Giseikai. Of interest will be the continuation of the Quarterly Statewide Newsletter, a Statewide Online Calendar system, and an Annual Endowment Campaign.
- For planning purposes, the 2022 Bon Dance will be a traditional in-person live event as done prior to the pandemic. Chair(s) needed. Subject to change.
- Various user groups will be starting up their activities in the coming months. These include martial arts, MSG (aka Parkinsons Group), Mindfulness Group, and Mililani Crafters. Kumon and Adult Day Center will continue to use facilities on a regular basis. Check the master calendar on the bulletin board when scheduling an activity.
- Various reports from VPs and unit representatives were presented. Dealing with various leakages in facilities, ADC requesting office space due to COVID, New Year's Day Kansho Ringing went well, Service Committee working on schedule for the year.
- BWA has coordinated a new Sunday Service Refreshment procedure and schedule. See details in the BWA section. Zippy's Fundraiser in lieu of Bazaar. Zenzai to be served on Feb. 27.
- Announcements: Temple Clean-Up date TBD, MHM won 3rd Place for a "Banner Award" from the Mililani Holiday Parade, MLK donation Drop-off at Aiea on Jan 17.



**MILILANI HONGWANJI  
ADULT DHARMA DISCUSSION GROUP  
10 AM – SUNDAYS ON ZOOM**



**Please email Brandon Hee at  
heebear1@gmail.com  
to get the Zoom meeting invitation.**

**This group discusses how Buddhism can help in everyday life experiences. Currently our group consists of Mel Hayase, Darrin Wong, Brian Frey, Shirley Renard, David Thomson, and Brandon Hee. This group has a lot of interesting discussions filled with dry humor and wit.**

*Celebrating 45 years!*



**Established in 1977**

*February Memorials*

Those who have passed during the month of February.

- |                  |                    |
|------------------|--------------------|
| Haruno Abe       | Mitsuo Nakasone    |
| Shigeko Abe      | Francis Nakayama   |
| Harry Abe        | James Ogasawara    |
| Rev. Tetsuun Ama | Lynn Onigami       |
| Hayako Ando      | Isamu Oura         |
| Helen Cobb       | Bob Riichi         |
| Norman Doi       | Seichi Sakaida     |
| Mitsuo Fujimoto  | Harold Sato        |
| Kakujiro Ginoza  | Mark Shintaku      |
| Susie Hara       | Sammy Sumida       |
| Edward Hirai     | Chiyo Tada         |
| Hasuno Iha       | Earl Takita        |
| Gladys Kanagawa  | Tokuichi Tanabe    |
| Charles Kanja    | Paul Tanaka        |
| Aimee Kawamura   | Hajime Tanitomi    |
| Eyvinn Kihara    | Ayame Terao        |
| Ethel Kunishige  | Derrick Tokioka    |
| Hideko Kuya      | Joyce Tonouchi     |
| Patrick Matsuda  | Shigeo Tsurusaki   |
| Toshio Matsumiya | Shitsue Tsurusaki  |
| Satomi Matsumoto | Yumi Ukita         |
| Winona Matsumoto | Sueo Watanabe      |
| Elsie Matsumura  | Yoshinobu Watanabe |
| Mitsuo Mitsui    | Ralph Yasunaga     |
| George Morioka   | Uta Yoza           |

Please call the minister at (808) 625-0925 and/or email [dharm.connection@gmail.com](mailto:dharm.connection@gmail.com) if there are corrections or additions to the published list. Families may call the minister to schedule special family memorial services for their loved ones. For 2022, special memorial years are observed for loved ones who passed away in:

- |                |                |                 |
|----------------|----------------|-----------------|
| 2021 1st Year  | 2006 17th Year | 1990 33rd year  |
| 2020 3rd Year  | 1991 23rd Year | 1973 50th year  |
| 2016 7th Year  | 1998 25th year | 1923 100th year |
| 2010 13th Year |                |                 |



**Your 2022  
Mililani  
Hongwanji  
Leadership Team**

**Seated L-R: Dean Sakamoto, Diane Yoza, Gay Tanaka, Rev. David Fujimoto, Standing L-R: Janice Yasunaga, Stephen Koito, Stephen Chinen, Roger Babcock, Mel Hayase, Gordon Watanabe, Brandon Hee, Clifford Togo**

**Missing: Robyn Izumi, Rene Mansho, Dennis Oshita, Kevin Asato**



# BWA News

Greetings to all!! Now that the holidays are behind us, please continue safe habits to rev up your immune system by getting some exercise every day, even if it's just walking around your house. Simple habits like drinking adequate amounts of water (half your weight in ounces daily), sleeping 7-8 hours a night, and letting go of stress will all go a long way toward optimum health. Did you know that BWA members provide the beautiful floral arrangements for the altar each week? If you are interested in helping, please contact Rev. David, as he is looking for someone to replace him each week to do the floral arrangements.

The 2022 BWA officers were installed on January 2. Officers are Diane Yoza, President; Janice Yasunaga, Vice-President; Claire Doi, Secretary; Lani Yamami, Ass't Secretary; Ethel Yamashige, Treasurer; Aryn Ishikawa, Ass't Treasurer. Auditors are Doreen Sakamoto and Sharon Kaneko.

In lieu of an in-person bazaar, the BWA has decided to have a Zippy's fundraiser. Tickets will be sold for \$9.00, which will allow customers to purchase either chili, Portuguese bean soup, spaghetti, a breakfast plate, or a plate of cornbread. Details are forthcoming. If in-person services resume in February, we plan to serve zenzai on February 27. Also, please note that Dana Day will be observed on February 13. On that day, the BWA plans to collect canned goods, non-perishable items, and monetary donations for the Hawaii Foodbank. Monetary donation checks can be written directly to Hawaii Foodbank.

As you recall, refreshments were served after services, pre-pandemic. Now that we may be opening up to in-person services, the subject of refreshments was discussed. It was decided that there will be sign-ups for refreshments only for the monthly Memorial Services, which are held the 2nd Sunday of each month. The Kyodan will provide refreshments on the other Sundays. We will circulate a sign-up sheet at our first in-person service, and post the sheet on the board. As long as we have the covid threat, we ask those who sign-up, to pre-package their refreshments. Any questions or suggestions can be directed to Lani Yamami or Diane Yoza.



## Mililani Hongwanji BWA Scholarship

The Mililani Hongwanji BWA is offering a \$1,500 scholarship for post high school schooling or training. This includes those working towards a bachelor's, master's or doctorate degree. Members of the BWA, their children and grandchildren may apply.

The scholarship is one of the major programs of the BWA, which has awarded scholarships to over 15 applicants.

Application forms are available on line at the Mililani Hongwanji website or you may contact Diane Yoza, Committee chair at [diane.yoza@gmail.com](mailto:diane.yoza@gmail.com). Go to:

<http://www.mililanihongwanji.org/bwa-scholarship.html>

to get the scholarship application form. The deadline to submitting an application is March 6.







# Dharma School

As we begin the Year of the Tiger this month, may we continue to be strong like the Tiger and take on the continuing challenges with bravery and hope for the future! We would like to thank our Dharma School 'ohana for their flexibility when we had to change our originally planned three class per month hybrid schedule back to our twice a month virtual only schedule for January. We will advise about our upcoming months' schedule as soon as possible.

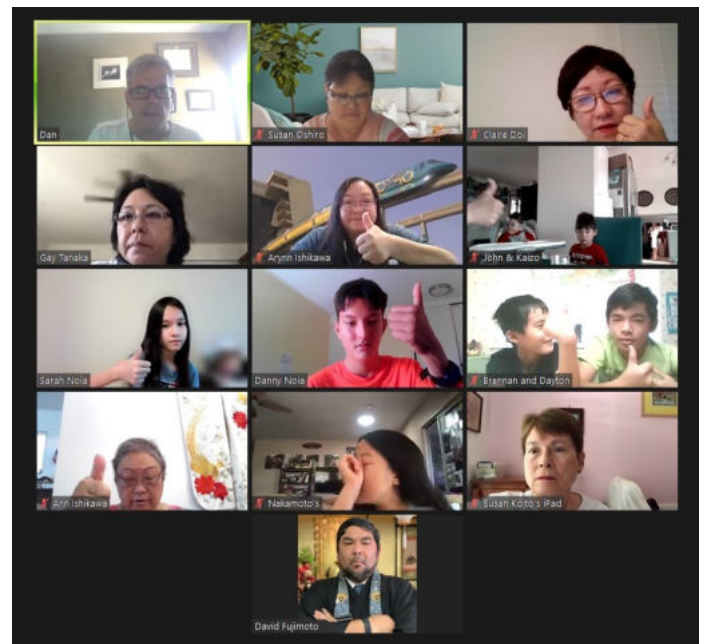


Did you see our Dharma School students holiday cards in the December 29, 2021 issue of Midweek newspaper, "Joy of Crafting" section? Susan Koito's submittal was selected as one of the projects to be featured in the article. Author Joy Shimabukuro wrote, "Susan Koito, along with her grandchildren Dayton, Brennan, and Courtney—made holiday cards for the residents at The Plaza at Mililani to enjoy. This was a project that the students of Mililani Hongwanji participated in. It was a wonderful way to share their great card-making skills with the kupuna and staff." A nice shout out for our students and the temple.

For our January 16th virtual class, we started off singing "Happy Birthday" to a few of our students celebrating their birthdays in January. To get reacquainted after the holiday break, we played a fun game of Zoom tag! Then Mr. Dan (with help from Danny and Sarah) talked about

different types of cycles and the Eightfold Path. We also shared pictures of the awesome New Year's cards the students (and adults too) made that were mailed to some of our temple members.

On January 30th, Rev. David Fujimoto led a virtual altar etiquette class and reviewed all the items on the altar, their symbolism, and histories. He also reviewed how to properly do Oshoko. Additionally, we had a question and answer period to help everyone fully understand what was covered. We also had a discussion on the meaning of Amida Buddha led by our own Dharma student Danny. So fear not, we will continue to persevere like the mighty Tiger into 2022 learning and practicing the Dharma virtually or hopefully in-person very soon!



If you know a student (preschool to high school), in Mililani, Hawaii, or even on the mainland, who would like to join in on our sessions, please contact Claire Doi at [clairedoi@hawaiiintel.net](mailto:clairedoi@hawaiiintel.net) to be added to our email list to get our meeting agendas and links. Or please feel to contact us if you have any questions or need more info about our Dharma School sessions.



# Clean-Up on February 19<sup>th</sup>!

By: Tyler Oshiro, Adopt-A-Highway Coordinator

Mark your calendars and make your plans to join our Sangha members for this important community service project! Our first quarterly clean-up is coming up on:

**Saturday, February 19, 2022, 8:00 a.m.**

Please arrive at the temple by 8:00 a.m. Please wear covered shoes. Trash bags, gloves, and safety vests will be provided. There will be brief safety review and areas to clean will be assigned. Our temple is assigned to clean the portion of Kamehameha Highway that runs through Mililani.

The clean-up usually runs for about an hour. Upon return to the temple, water, coffee, and breakfast sandwiches will be provided.

This program is a great opportunity to help beautify our community and spent a Saturday morning with members of our Sangha. If you have any questions, please feel free to contact me at [tylerkoshiro@gmail.com](mailto:tylerkoshiro@gmail.com).



## Annual Temple Clean Up Dec. 19, 2021

All members and users of facilities, please come and help clean our Temple. Just as we clean our own houses so that we can start the New Year out right in a clean house, let us begin the new year 2022, with a clean temple in order to help our Buddha Dharma.

WHEN: Sunday, Dec. 19, 2021, 8:00 a.m. to done

WHERE: Mililani Hongwanji

WHAT TO WEAR: Clean clothes & Mask

WHAT TO BRING: Rags, buckets, short ladders, scrubbing materials, etc.

WHAT TO DO: List of tasks will be available, but use your initiative to do more.

Refreshments: Voluntary. Coffee & water to be provided. Please consume refreshments outside. A short service will be conducted. Please come out to this annual clean-up for fun, fellowship and a great cause.

## 2022 Adopt-A-Highway Schedule

- February 19th
- May 21st
- August 27th
- November 19th



**Meet at the temple at 8am to help with our quarterly Saturday trash pick up community service**

## Mililani Hongwanji Proudly Announces Scholarship Opportunity

Applications are now being accepted for The Mililani Hongwanji Kyodan Scholarship. The Mililani Hongwanji (Kyodan) Scholarship in the amount of \$1,000 is to be used for post high school education and is open to Members of the Mililani Hongwanji (Kyodan) and their children, to be used in certificate/degree programs at accredited institutions of post-high school training or schooling.

### The Requirements:

- Family or applicant must be a registered member in good standing of the Mililani Hongwanji (Kyodan).
- Must be used for post high school education in a degree/ certificate program.
- Academics (transcripts), extra – curricular activities, Hongwanji activities, leadership and community



### Deadline:

- Completed applications must be submitted to: Mililani Hongwanji Scholarship P.O. Box 893308 Mililani, HI 96789 on or before March 1, 2022
- For more information and scholarship application, please visit: [www.mililanihongwanji.org/kyodan-scholarship](http://www.mililanihongwanji.org/kyodan-scholarship) or see Rev. Fujimoto





BUDDHIST STUDY CENTER PRESENTS

2022 SPRING SEMINAR

# DHARMA THROUGH the Eyes of Youth

MARCH 25 & 26

---

Friday, March 25 | 7:00 - 8:30pm

---

Panel Discussion  
Jr. YBA Youth-led activity  
Q&A after Discussion



Manami Alspach



Chihiro Okawa



Kana Suzuki



Jay Yokoyama



Naho Umitani

JR. YBA PANELISTS

---

Saturday, March 26 | 10:00 - 11:30am

---

Guest Speaker: Jacob Chang  
Panelists

Dharma School / New Member: Wayne Yoshioka

YESS Camp: Dwight Matsuo

Temple Leadership: Wayde Toyama

Q&A

SATURDAY SPEAKERS



Jacob Chang



Wayne Yoshioka



Dwight Matsuo



Wayde Toyama

REGISTER NOW | <https://bit.ly/bscspringseminar2022>





# FYI.....



## Mililani Hongwanji Buddhist Temple

Minister: Rev. David Fujimoto  
 Kyodan Pres: Dean Sakamoto  
 Mailing Address: P.O. Box 893308  
 Mililani, HI 96789  
 Location: 95-257 Kaloapau Street  
 Mililani, HI 96789  
 Email: [dharma.connection@gmail.com](mailto:dharma.connection@gmail.com)  
 Phone: (808) 625-0925  
 Weekly Services: Sundays, 9:00am

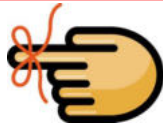
### Dharma Connection Publication

3 ways to get the Dharma Connection:

- 1) By mail—US Post Office will deliver to your mailbox.—available by request only! (This edition is online at: [mililanihongwanji.org](http://mililanihongwanji.org))
- 2) In your “inbox”—available by subscription only! If you wish to receive the Dharma Connection by email, contact: [dharma.connection@gmail.com](mailto:dharma.connection@gmail.com)
- 3) download a copy from the temple website: [mililanihongwanji.org](http://mililanihongwanji.org)

For additional information check out our Facebook Page: <https://www.facebook.com/pages/Mililani-Hongwanji-Buddhist-Temple/114271522485>

### Monthly Joint Memorial Service Change



Mililani Hongwanji's monthly joint memorial service is on the **SECOND** Sunday of each month. There will be a small change in the format of the monthly joint memorial service. Mililani Hongwanji will continue to publish the names of the members and friends that will be honored in the monthly memorial services.

For families attending the joint memorial service, please sign in on the memorial service tablet on the counter, which will be made available every Sunday leading up the service.

For those who wish to add or remove family members or friends from the published list, please let Rev. Fujimoto know as soon as possible to ensure proper action.

### Adult Day Center at Mililani Hongwanji

Aloha! We would like to let everyone know that we are accepting applications for Adult Day Center enrollment. Do you know anyone caring for a loved one that needs respite or help caring for their loved one throughout the day? We are welcoming new clients in our **air conditioned** facility.

For any interested new applicants, we are offering tuition assistance. Please contact our ADC Director Trece White for more information at (808) 561-2147. We are OPEN 5 Days a week Monday thru Fridays from 8am-5pm; most Saturdays upon availability with shortened hours. Early drop off can be arranged beginning at 7am.

### Memorial Services

Mililani Hongwanji conducts memorial services in honor of those who have passed away. The Shotsuki Memorial Service is a general memorial service which are held monthly to remember members and friends who passed away during the month in which the memorial service is held. These services are held primarily for those individuals that do not fall in the yearly service interval cycle.

Nenki Hoyo Memorial Services are memorial services which are held separate from the monthly memorial services in yearly intervals. These separate private services can be held before, on or after the memorial dates. It is a personal opportunity to gather as a family to encounter and listen to the Buddha Dharma and remember your family members and friends who have passed on and through these services, we are able to reflect on all that we have received from them in our daily lives. It also gives families the opportunity to reconnect with members they otherwise would not see during the course of the year.

### Minister's Private Visitation

Are you unable to come to the temple? Please call Rev. David Fujimoto at 808.625.0925 to request a private visit. The minister would love to reach out to you and be the bridge between you, the temple and the sangha!



# Mahalo for your DANA

(December 21, 2021 to January 18, 2022)

## 50th Anniversary Celebration

Karen Oda

### General Donation

Claire Doi

Becky Gustafson

Warren & Nora Hahn

Mamoru & Ethel Kawahara

Michael Lum, AAL

Lester & Joyce Ogawa

Ethel Yamashige

Glenn S. & Minnie Yoshimori

### Joint Memorial Service

Janet Abe

Annie A. Chang

Sharon Freitas

Janice Fukunaga

Harley & Martha Ishii

Mamoru & Ethel Kawahara

Carol Saito

Margaret Tanabe

Hiroyoshi & Satoko Terao

Wayne & Nora Toma

Gordon & Lyn Watanabe

Diane Yoza

Diane Yoza

### Other

Sharon Freitas

Warren & Nora Hahn

Melvin Hayase

Brandon Hee

Debra Hiyakumoto

John K. & Ann Y.M. Ishikawa

Dennis & Carrie Kawamoto

Milton & Susan Migita

Patrick & Susan Oshiro

Gordon & Lyn Watanabe

50th Anniversary Celebration Donation

New Year's Day Donation

IMO Jean Sanehira

IMO Sumi Marutani

Funeral service IMO Mr. Earl Morimoto

New Year's Day Donation

For 2021

IMO Sadae Tagami & Kazuko Ama

IMO Kameju Akamine, Hatsue Akamine & Arnold Akamine

IMO Charles T. Oishi

IMO Katsumi Shigehara, Toyoko Shigehara & Richard Fukunaga

IMO Kenji Ishii & Setsumi Fuke

IMO Satoshi Kawahara

IMO Edwin Saito

IMO Wayne Hirata

IMO Matsue Sugita

IMO Masue Toma

IMO Toyoji Watanabe

IMO Sadae Tagami

IMO Satoru Nakamura

New Year's Day Donation

New Year's Day Donation

New Year's Day Donation

New Year's Day Donation

New Year's Day Donation

New Year's Day Donation

New Year's Day Donation

New Year's Day Donation

New Year's Day Donation

New Year's Day Donation



**In Gratitude.**

**Namo Amida Butsu**

**Namo Amida Butsu**

**Namo Amida Butsu**

## Bodhi Day Service

Warren & Nora Hahn

## BWA Eshinni & Kakushinni Day

Richard & Joyce Fujimoto

## Eitaikyo Service

Richard & Joyce Fujimoto

## Social Concerns(HQ)

Karen Oda

## Gotan-E Service

Richard & Joyce Fujimoto

Karen Oda

## Higan Fall Service

Richard & Joyce Fujimoto

## Higan Spring Service

Richard & Joyce Fujimoto

## Hoonko Service

Janet Abe

Richard & Joyce Fujimoto

Warren & Nora Hahn

Lawrence & Joyce Nishioka

Aileen Sato

Margaret Tanabe

Gordon & Lyn Watanabe



# Photo Gallery



Realities of COVID-19.





# EWA HONGWANJI MISSION

91-1133 Renton Road Ewa, Hawaii  
Mail: P.O. Box 60549, Ewa Beach, HI 96706

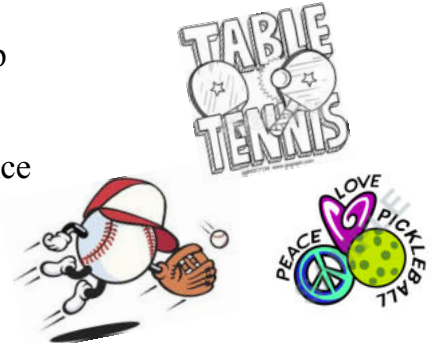


## NEWSLETTER

February 2022

### Calendar

Feb 24 (Thu)	9:00 am	Before service clean-up
27 (Sun)	11:00 am	Monthly Service
Thursdays	9:00am-11:00am	Yard/temple maintenance
	11:00am-12:00pm	“Exercise”



### Welcome to Ewa Hongwanji Mission!

Ewa Hongwanji Mission would like to welcome Caran Iwata to our ohana. We truly appreciate all that you do for us and are grateful for your membership. We hope to see you at our services and activities!

### Mahalo for your Donations

#### New Year Donations

Mrs. Jean Abe  
 Mrs. Miyoko Kaneshiro  
 Mr./Mrs. Toshio/Yvonne Kishi  
 Mrs. Jayne Kurizaki  
 Mr./Mrs. Randy/Susan LaVigne  
 Mr. Glenn Nagamine  
 Ms. Myra Nohara  
 Ms. Lisa Oshiro  
 Mr. Rodney Takemoto  
 Ms. Rae Wakimura  
 Mrs. Ruth Wakimura  
 Mr. Bertram Yasui

#### Donations

Mr. Frank Goto ~ Social Concerns Fund  
 Mr./Mrs. Milton/Madelline Oshiro ~ In memory of Mr. Matsusuke & Mrs. Lillian S. Oshiro  
 Mrs. Ruth Wakimura, Ms. Rae Wakimura, & Mr. Shane Oakland ~ In memory of Mr. Ernest Wakimura

#### Ofuse

Mrs. Ruth Wakimura ~ Memorial service of Mr. Ernest Wakimura  
 Mrs. Ruth Wakimura ~ Inurnment service of Mr. Ernest Wakimura

Rev. David Fujimoto's office hours at Ewa Hongwanji ~ Thursdays 9:00 am-11:00 am.  
 You may also contact him at 808-625-0925 (Mililani Hongwanji Office) or leave a message on Ewa Hongwanji's voicemail at 808-681-5222.

Keep informed of what's happening at Ewa Hongwanji - <https://bit.ly/3bKGt2f>