

State Membership Conference

Every four years one of the Districts hosts a Statewide Membership Conference on a rotation basis. It is an important time for fellow BWA members to bond with one another and enjoy the conference program. This Conference is held in the year prior to the World Federation of Buddhist Women's Associations Convention.

World Federation of Buddhist Women's Associations Convention

The World Federation of BWA Convention is held every four years. The World Federation Districts are Japan, Hawaii, Buddhist Churches of America, Buddhist Churches of Canada, and South America. Members in these Districts attend this Convention to share information, to unite in spirit and purpose, to strengthen our beliefs in Jodo Shinshu, and to promote world peace.



For more information to be a BWA member, please contact your Hongwanji temple

HONOLULU

- Honpa Hongwanji Hawaii Betsuin 536-7044, 7045
- Jikoen Hongwanji Mission 845-3422
- Kailua Hongwanji Temple 262-4560
- Moiliili Hongwanji Mission 949-1659

OAHU

- Aiea Hongwanji Mission 488-5685
- Mililani Hongwanji Temple 625-0925
- Pearl City Hongwanji Mission 455-1680
- Wahiawa Hongwanji Mission 622-4320
- Waianae Hongwanji Mission 696-3125
- Waipahu Hongwanji Mission 677-4221

KAUAI

- Kapaa Hongwanji Mission 822-4667
- Lihue Hongwanji Mission 245-6262
- West Kauai Hongwanji Mission
Hanapepe Hongwanji Temple 335-3195
Waimea Hongwanji Temple 338-1537

MAUI

- Kahului Hongwanji Mission 871-4732
- Lahaina Hongwanji Mission 661-0640
- Lanai Hongwanji Mission 871-4732
- Makawao Hongwanji Mission 572-7229
- Wailuku Hongwanji Mission 244-0406

HAWAII

- Honpa Hongwanji Hilo Betsuin 961-6677
- Honokaa Hongwanji Mission 775-7232
- Honomu Hongwanji Mission 963-6032
- Kamuela Hongwanji Mission c/o 775-7232
- Kohala Hongwanji Mission c/o 775-7232
- Kona Hongwanji Mission 323-2993
- Naalehu Hongwanji Mission c/o 966-9981
- Paauilo Hongwanji Mission 776-1369
- Papaaloa Hongwanji Mission c/o 963-6032
- Papaikou Hongwanji Mission c/o 963-6032
- Puna Hongwanji Mission 966-9981



HONPA HONGWANJI MISSION OF HAWAII

**HAWAII FEDERATION OF
BUDDHIST
WOMEN'S ASSOCIATIONS**
1727 Pali Highway
Honolulu, HI 96813
Website: www.hawaiiibwa.org



Name

The Hawaii Federation of Buddhist Women's Associations is an affiliate organization under the Honpa Hongwanji Mission of Hawaii.

Purpose

1. To unify and cooperate with all United Honpa Hongwanji BWA in the State of Hawaii;
2. To perpetuate and expand Jodo Shinshu (Pure Land Sect) in the State of Hawaii.
3. To promote the development of Buddhist women's organizations; and
4. To participate in the promotion of Buddhism throughout the world and to work for world peace.



Organizational Chart

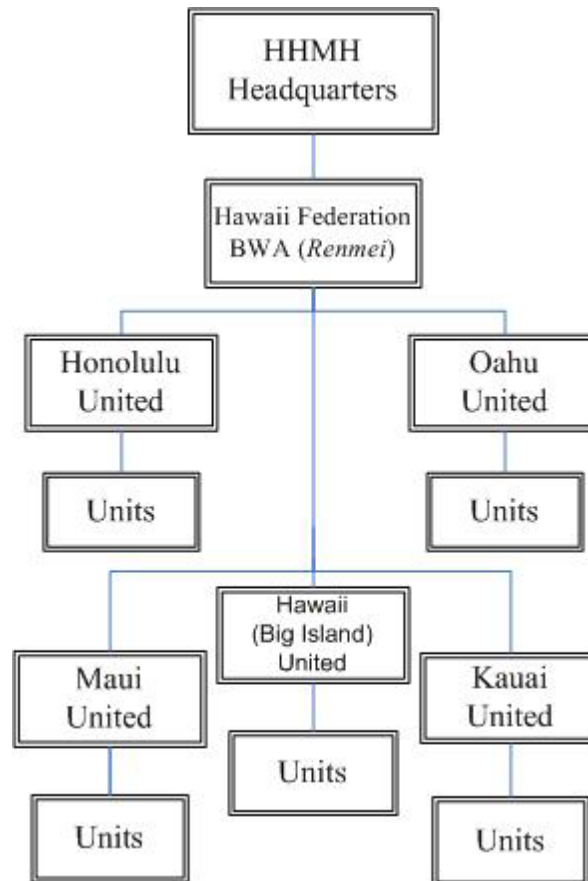
Honpa Hongwanji Mission of Hawaii,
Headquarters

Hawaii Federation of Buddhist Women's
Associations (*Renmei*)

United Districts (*Rengo*)

Honolulu, Oahu, Hawaii (Big Island), Maui,
Kauai

Units (individual temples)



Programs

Propagation of Jodo Shinshu teachings and promotion of world peace.

Buddhist Education

Buddhist traditions, altar arrangements, music, health care, current events, etc., are some of the subjects in our annual workshops and seminars.

Student Exchange

BWA sponsors the popular Student Exchange Program every year. Students 17-23 years of age apply for a chance to spend two weeks in Japan every other year. For alternating years Japan students get to spend time in Hawaii, exchanging fellowship and goodwill.

Dana Day

Dana Day was one of the first resolutions approved at the 2nd World Buddhist Women's Convention in New York City in 1965. Dana Day collections are made to charitable and social welfare agencies in respective countries.

Eshin-ni and Kakushin-ni

Lady Eshin-ni is our founder Shinran Shonin's wife. Kakushin-ni is their daughter. Each year, on or around April 25, a special religious service is held in honor of both and a contribution is made to a youth organization of the temple.

Sister District Relationships

This program fosters friendship and fellowship between temple units by inviting and hosting another unit.

Hosha (Grateful Response)

At the 3rd World Buddhist Women's Convention in 1967 in Hawaii, *Hosha No Hi* was established to promote this Buddhist practice at temples or in the community.

Care Day

Care Day was created at the 12th World Buddhist Women's Convention at Sao Paulo, Brazil in 2002 to extend Compassion and Assistance in Response to Elders (CARE).