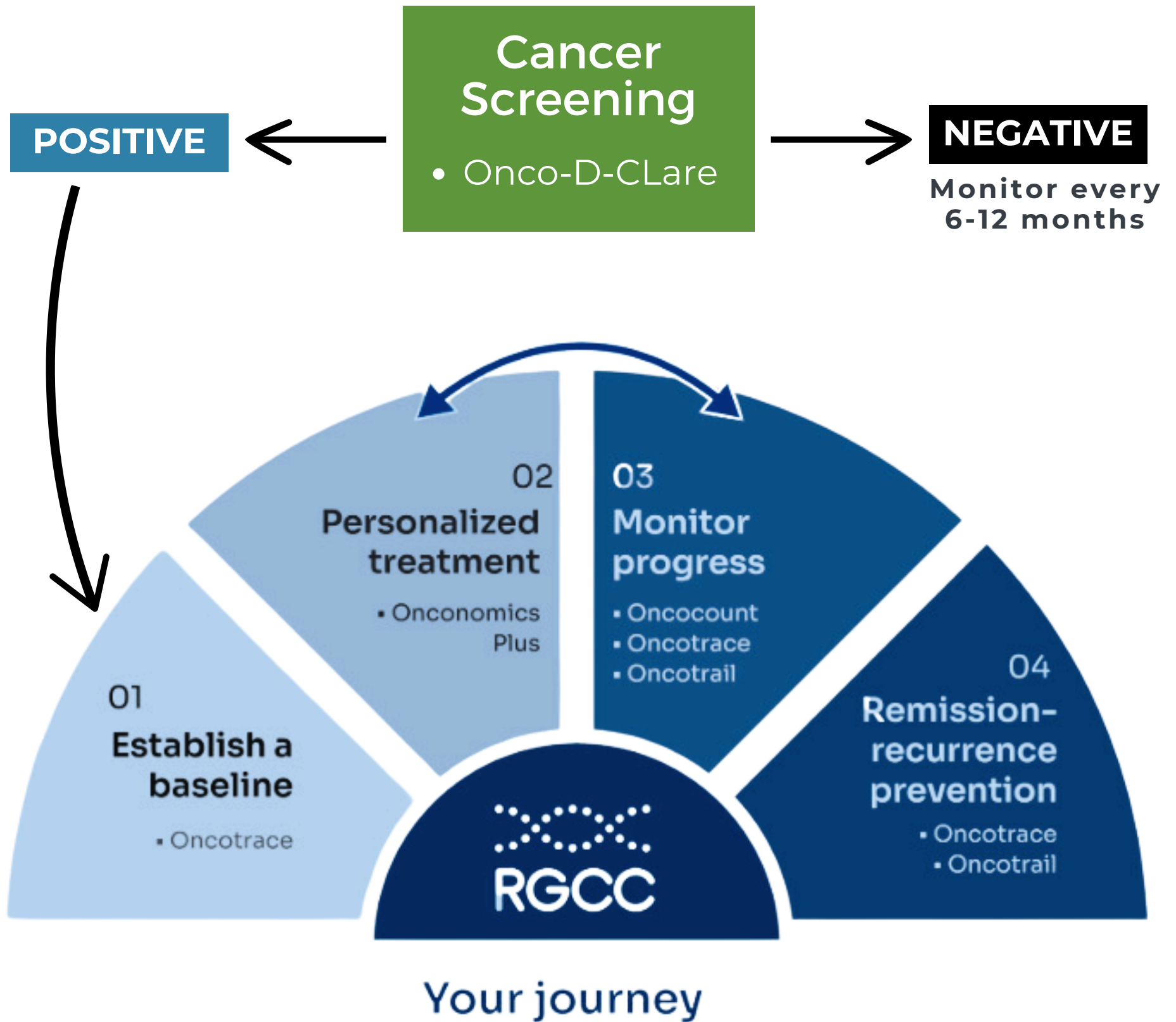


YOUR UNIQUE PATH, OUR PERSONALIZED SOLUTIONS



PERSONALIZED CANCER TESTING → with RGCC

- 1 We help you with early cancer detection
- 2 Gain personalized insights to guide your treatment plan
- 3 Assist in monitoring your progress during treatment
- 4 Provide strategies to prevent remission and minimize recurrence

RGCC Personalized Cancer Testing

RGCC (Research Genetics Cancer Center) was founded in 2004 by genetics pioneer Dr. Loannis Papatotiriou, who believes the key to effective cancer treatment lies in personalized medicine. Using innovative technology, RGCC has developed tests that provide a detailed look into a patient's genetics, physiology, and immune profile. This information is invaluable in creating targeted, individualized treatment plans that increase the chances of successful outcomes.

Why Use RGCC Testing?

- **Tailored Treatment:** RGCC tests reveal which treatments are most effective based on the genetic and cellular characteristics of each patient's cancer.
- **Cancer Monitoring:** By analyzing circulating tumor cells (CTCs), RGCC testing monitors cancer activity and detects possible recurrence.
- **Integrative Options:** RGCC testing includes responses to natural therapies, enabling the use of complementary and alternative treatments as part of an individualized approach.

RGCC Testing Options

1. OncoTrace (Baseline of your cancer status)

- **Purpose:** OncoTrace helps identify a primary tumor's origin and provides guidance on disease progression and prognosis. This is useful in cases where a primary tumor is not easily identifiable, it provides critical data about cancer development and potential outcomes.
- **How It Works:** Blood samples are analyzed for CTCs to identify the concentration and immunophenotype, offering clues about tumor origin and progression.
- **Ideal For:** Patients where the primary cancer origin is unknown or those needing insight into disease progression.
- **Price:** €800 - approximately \$864 for test and blood draw. Post consultation review is \$497. If you are a new patient, a consultation will be scheduled before ordering the RGCC test and arranging the blood draw.

(This company is based in Greece, therefore test prices are fixed in Euro pricing, which includes supply kits and shipping. When converting to USD, the conversion is based on the day the test was ordered for you. Test prices do not include in-office fees charged by your RGCC provider, MeehanMD.)

2. Onconomics Plus (Chemotherapy and natural substances testing)

- **Purpose:** Onconomics Plus evaluates how various anti-cancer drugs, targeted therapies, and natural treatments impact the cancer cells in a patient's body. This provides your medical provider with a detailed breakdown of which treatments, including natural substances, are most likely to be effective.
- **How It Works:** Blood samples are analyzed to test the effectiveness of specific therapies, helping identify the most suitable treatments.
- **Ideal For:** Patients seeking a well-rounded, personalized treatment plan that combines conventional and integrative therapies.

- **Price:** €2,050 - approximately \$2,213 for test and blood draw. Post consultation review is \$497. If you are a new patient, a consultation will be scheduled before ordering the RGCC test and arranging the blood draw.

(This company is based in Greece, therefore test prices are fixed in Euro pricing, which includes supply kits and shipping. When converting to USD, the conversion is based on the day the test was ordered for you. Test prices do not include in-office fees charged by your RGCC provider, MeehanMD.)

3. OncoTrail (Monitoring of effectiveness of treatments)

- **Purpose:** OncoTrail is used to detect and quantify circulating tumor cells (CTCs) in patients with specific cancers like breast, colon, GI, melanoma, lung, sarcoma, and prostate. This tracks how well cancer treatments are working and provides insight into potential relapse risk with follow-up testing.
- **How It Works:** Blood is analyzed to measure CTC presence and concentration, giving a marker of treatment effectiveness.
- **Ideal For:** Patients with a confirmed cancer diagnosis who want to monitor treatment effectiveness and track their health over time.
- **Price:** €775 - approximately \$837 for test and blood draw. Post consultation review is \$497.

(This company is based in Greece, therefore test prices are fixed in Euro pricing, which includes supply kits and shipping. When converting to USD, the conversion is based on the day the test was ordered for you. Test prices do not include in-office fees charged by your RGCC provider, MeehanMD.)

4. Onco-D-Clare (Healthy Screening Test)

- **Purpose:** Onco-D-clare is designed as an early screening test for patients who do not have a cancer diagnosis but may want to stay informed about their risk. This is especially useful for those who have a family history of cancer or other risk factors. This test empowers you with knowledge by offering a nuanced understanding of your cancer risk and the means to chart a proactive course toward a healthier future.
- **How It Works:** With the ease of a simple blood draw, you can now detect cancer long before any symptoms emerge. Onco-D-clare opens an early door to personalized health insights.
- **Ideal For:** Patients who have a family history of cancer or other risk factors and want to stay ahead of potential health challenges. (Recommended to test annually. If the test returns positive, we can transition to OncoTrace for further analysis without requiring additional bloodwork.)
- **Price:** €800 - approximately \$864 for test and blood draw. Post consultation review is \$497. If you are a new patient, a consultation will be scheduled before ordering the RGCC test and arranging the blood draw.

(This company is based in Greece, therefore test prices are fixed in Euro pricing, which includes supply kits and shipping. When converting to USD, the conversion is based on the day the test was ordered for you. Test prices do not include in-office fees charged by your RGCC provider, MeehanMD.)

RGCC Testing Recommendations

Combining RGCC tests can offer a more comprehensive approach to personalized cancer care, depending on your specific needs:

For Treatment Planning (initial visit): Onconomics Plus & OncoTrace

This combination provides insights into genetic treatment responses (chemotherapy or natural) and can help clarify the origin and status of a primary tumor.

For Treatment Monitoring (follow up after treatment): OncoTrail

Ideal for tracking CTC levels to monitor treatment response and detect early signs of recurrence, this combination supports ongoing monitoring for post-treatment patients. (Every 3-6 months during treatment.)

For Health Insight (no cancer diagnosis): Onco-D-Clare

This provides the patient to stay on top of their health with early screening and personalized health insights.

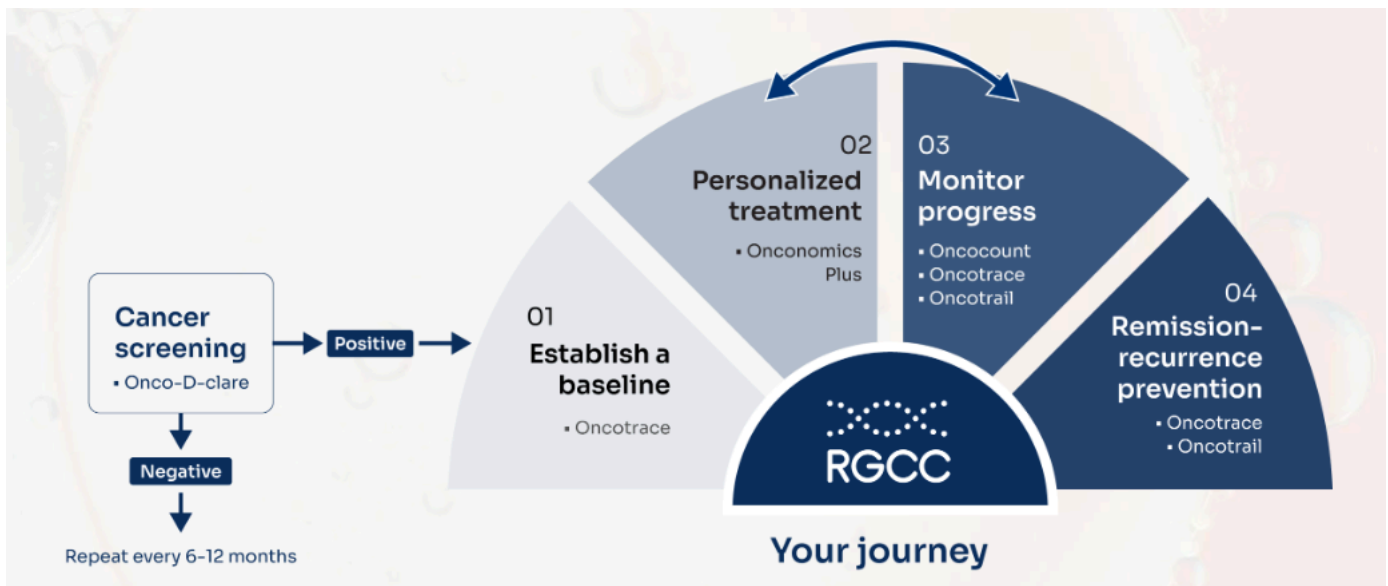
Additional Information:

- Before drawing blood for therapies, the patient must be off ALL immune-suppressing therapies for two weeks. Please see the extensive list attached. (Includes IV Ozone, IV Vit C, Mistletoe, Hyperbaric Oxygen, Ivermectin and Chemotherapy)
- If OncoTrace and Onconomics Plus are ordered and test results come back negative, then we will request a refund and the patient will only be responsible for OncoTrace pricing.
- If OncoTrace is positive, it is recommended to have a retest with OncoTrail after 3-6 months on therapies.

Limitations of RGCC Testing

While RGCC Testing provides a wealth of valuable data, it's important to understand what it can't do:

- **Does Not Replace Imaging:** RGCC does not substitute for traditional imaging like CT or MRI scans to monitor tumor size or location.
- **No Guaranteed Cure:** While RGCC identifies potentially effective treatments, it does not ensure a cure.
- **Blood Tests Do Not Include Brain or CNS Cancers:** Our tests can be utilized for all types of hematological and solid cancers, at various stages, outside of brain tumors because of the blood brain barrier not allowing the cells into general circulation. Brain and CNS cancers require a tissue or CSF sample instead of blood sample.



Immune-suppressing or immune-modulating agents

If drawing blood for cellular therapies, the patient must be off ALL immune-suppressing therapies as well. See the list below for specific timelines.

Reason: The breakdown of the CTC caused by these therapies creates debris and clouds the eld. Removing these therapies prior to the blood draw will allow time for the body to clear the debris, providing the best quality blood sample and ensuring better quality test results and therapy targets.

- Natural substances (IV): Cytotoxic substances like Vitamin C or Ozone at least 14 days
- Natural substances (oral supplements): Class 1 or 3 cytotoxic substances at least 14 days.
 - Artemisinin (and derivatives)
 - Amygdalin (Laetrile) found in apricot seeds
 - Berberine
 - Curcumin
 - EGCG (Green Tea)
 - Sulforaphane (from broccoli sprouts)
 - Resveratrol
 - Epigallocatechin Gallate (EGCG) from green tea
 - Quercetin
 - Echinacea
 - Mushrooms (Reishi, Maitake, Cordyceps) with beta-glucans
 - Apigenin (found in parsley, chamomile)
 - Luteolin
 - Boswellic Acid (from Boswellia)
 - Honokiol (from Magnolia bark)
 - Beta-Glucans (from mushrooms like reishi, shiitake)
 - Black Cumin Seed Oil (Nigella sativa)
 - CBD (Cannabidiol)
- Off-label medications: 21 days
 - Ivermectin
- Chemotherapy (non-platinum derivative): At least 14 days
- Chemotherapy (platinum derivative): At least 21 days
- MOAB or SMW drugs: At least 14 days
- Blood transfusions: At least 120 days
- Radiation: At least 14 days
- Contrast: At least 14 days
- Surgery (simple/routine): At least 7-10 days

- Surgery (brain or extensive): Minimum of 28 days based on time of recovery. Could be longer if slow recovery or if the person had some type of adverse reaction. Must be evaluated on a case-by-case basis.
- Fever: At least 14 days
- Hyperthermia (local/concentrated/microwave ablation): At least 30 days due to increased cellular debris released into the blood bloodstream.
- Hyperthermia (generalized/systemic): No waiting
- Cryoablation: No waiting
- Immune suppression medication
- PK Inhibitors: At least 14 days
- Mistletoe: 14 days
- Radioactive seeds: Patients are not eligible for therapies due to the prolonged and undetermined time of radiation exposure.
- Gamma Delta T Cell Therapy (GDTC): Patients are not eligible for therapies due to the potential interaction with RGCC therapies.
- Hyperbaric therapy

