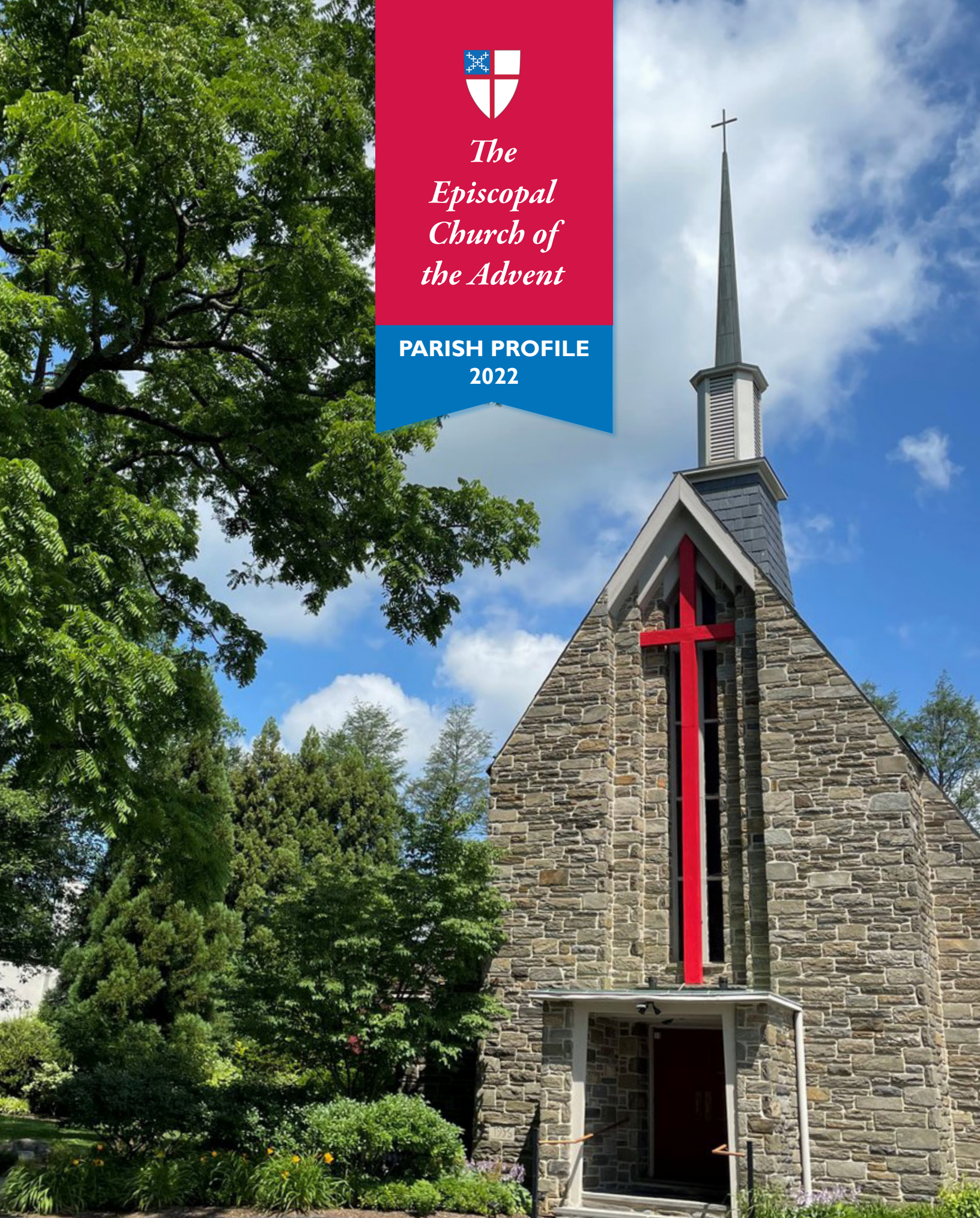




*The
Episcopal
Church of
the Advent*

**PARISH PROFILE
2022**



MISSION STATEMENT AND VALUES



The mission of The Episcopal Church of the Advent is to be a congregation that makes Christ's presence visible in the world as the symbol of God's redemptive love for all humanity.

The following words represent a living statement of the values that direct our lives as a parish community, shape our relationships with one another, and inspire our efforts to fulfill our mission in the community as The Episcopal Church of the Advent:

- We value ***spiritual growth and maturing*** in our faith in an atmosphere of openness and acceptance.
- We value a ***church family*** that is welcoming and provides a sense of community.
- We value a ***spirit of generosity*** that enables us to reflect Christ's love to others.
- We value ***spiritual guidance and leadership*** provided by both clergy and lay people.
- We value our ***interpersonal relationships*** with our clergy and each other and our personal relationship with Christ.
- We value ***active ministries*** in the church, in the community, and in the world around us.
- We value the ***tradition and histories*** of our faith, our church, and our people.

The Episcopal Church of the Advent's value statement is more than a printed document. It is a living statement of our parish and our lives using these values. Join us in the following pages and we will show you how these values direct our lives in our church activities with each other and throughout our involvement in the community.



WELCOME TO THE EPISCOPAL CHURCH OF THE ADVENT

Before you is our Parish Profile, describing the life and character of the Episcopal Church of the Advent in Kennett Square, Pennsylvania. Based on input from a cross-section of our members and our recent congregational assessment, this profile reveals a community that listens for God's Word and then tries to live that Word with strength and courage, in order to carry out the Church's mission to share God's love.

Our parish is a vibrant Christian community with diverse gifts and challenges for our future. With God's grace, we seek to discern God's will in the selection of our next rector. We pray that God will bless us with insight and wisdom, and lead us to call a priest who, instilled with the Holy Spirit, will consider the many meaningful opportunities of this ministry.

ADVENT BY THE NUMBERS 2021

601 Members

267 Households

150 Pledging Units

142 Average Sunday
Attendance

12 Baptisms

9 Funerals

8 Confirmations

2 Marriages



TABLE OF CONTENTS

Mission and Values.	Inside Front Cover
Welcome.....	1
Advent's Historical Timeline.....	3
Our Campus	4
Worship and Music.....	5-6
Pastoral Care	7
Evangelism	8-9
<i>Newcomers, Fellowship, Communications</i>	
Christian Education	10
Service – Partnerships in Mission.....	11-12
Stewardship and Financial Summary.....	13-14
Strengths at Advent	15
Opportunities for Improvement and Growth.....	16
The Leader We Seek.....	17
Our Community of Kennett Square, PA	18-19
Voices of the Parish	Back Cover

+ EPISCOPAL CHURCH OF THE ADVENT HISTORICAL TIMELINE

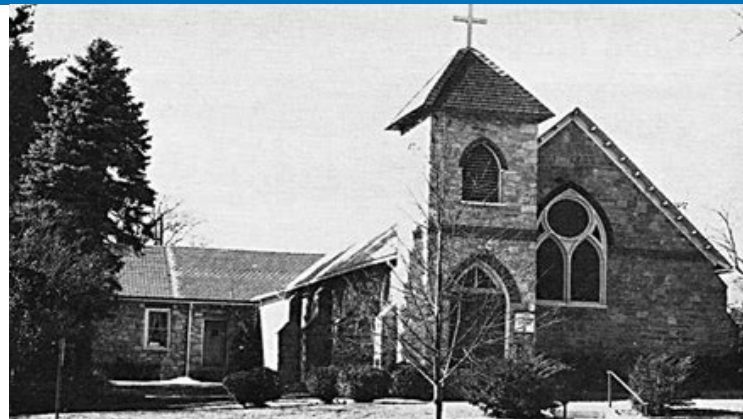
The Episcopal Church of the Advent, in Kennett Square, PA, has been a presence in the community for 140 years, and has been served by eighteen different rectors. From the church's original location on South Broad Street to the current location on North Union Street, Advent has engaged the residents of Kennett Square and surrounding neighborhoods in worship, fellowship, and outreach.



We value
the traditions
and histories
 of our faith,
 our church,
 and our people

1860s	Meetings of Kennett Square Episcopalians take place in homes, the Unicorn Tavern, and the Kennett Square town hall
May 1882	Charter signed for creation of an Episcopal church in Kennett Square
1885-6	Church of the Advent construction on South Broad Street First service conducted by Rev. G. Livingston Bishop
1910	Addition of vestibule, steeple, and parish house
1956-7	Cornerstone laid at site of new church at North Union and Fairthorne Streets First service conducted by the Rev. Elbert St. Claire
1982	Centennial celebration, steeple renovation & planting of oak tree
1986	Creation of the Rev. Elbert St. Claire Garden
1990	Construction of Sunday school wing & installation of the Möller organ
2002	Creation of the Rev. Canon David Thomas Memorial Garden
2005	Renovation of the parish hall & steeple - Addition of elevator & air conditioning
2020	Worship services have digital presence and outdoor options

The Episcopal Church of the Advent is a member of the Diocese of Pennsylvania under the leadership and guidance of our bishop, The Rt. Reverend Daniel G. P. Gutiérrez.





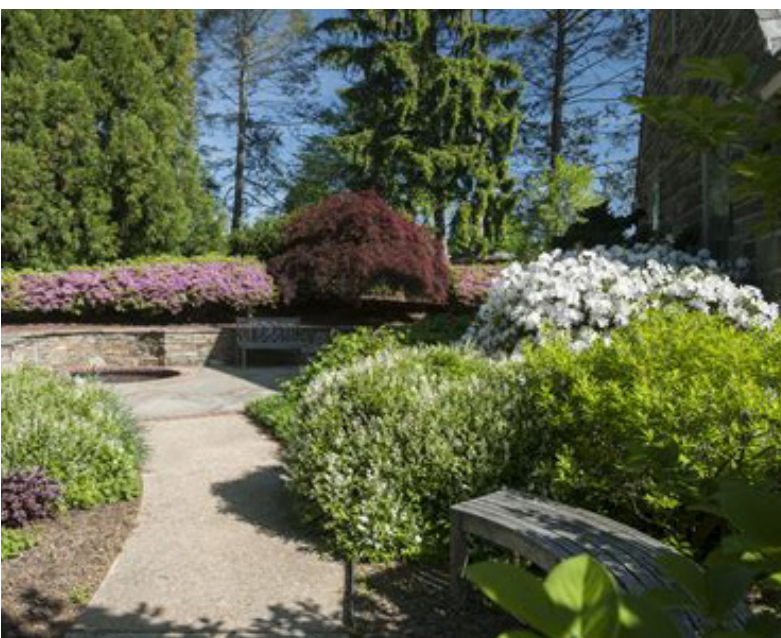
OUR CAMPUS

The Episcopal Church of the Advent is just outside the Borough of Kennett Square, a few blocks from the town center. The church sanctuary, parish hall, classroom/office wings, rectory and a large parking lot sit on 3.2 acres. Inside, the church's vestibule and adjoining narthex open to a 300-seat sanctuary. Adjacent to the chancel are the sacristy and choir loft. At the rear of the sanctuary is a small balcony. To the side is a cozy chapel, created with furnishings from the original 1885 Advent church sanctuary. Within the chapel are beautiful, historic stained-glass windows memorializing Bayard Taylor, Kennett Square's writer, poet and diplomat.

On the lower level below the sanctuary is a 2,300 square-foot parish hall, a youth room, and a certified

commercial kitchen. The two-story south wing contains a nursery, two meeting rooms, a library and the church offices. The two-story north wing contains three Sunday school classrooms, the children's chapel, and the choir practice room. This wing principally houses the Kennett Square Preschool Cooperative, which operates during the week, independently of Advent.

Next door to the church building, the rectory was refurbished in 2005 to be a two-story 3,300 square-foot parish conference and office center consisting of seven offices and a conference room. In 2018, the building was converted back to a residential home to produce rental income for Advent. In late 2019, it was repurposed as the rectory again.



MEMORIAL GARDEN

The memorial garden, located adjacent to the chapel, was developed in 2002 as a place of meditation and reflection. It was created for the interment of the cremated remains of parishioners and their immediate family members. The entry is along a winding path which leads to a peaceful reflecting pool. A stone wall creates a border that sets the interment area apart from the rest of the garden. In 2010, the garden was dedicated to the memory of our former rector, the Reverend Canon David Powers Thomas. A memorial garden committee, known as the Lay Weeders, administers and maintains the garden with faith and love.

WORSHIP AND MUSIC

At the Episcopal Church of the Advent, we offer a variety of worship opportunities on Sunday mornings and on weekdays to meet the various needs of our congregation. We are theologically diverse: while theologically progressive, about one-quarter of our congregation is more theologically conservative. We are spiritually vital: we strongly affirm our connections with God and the integration of faith in our lives. Whether we gather inside, outside, or on-line, we appreciate the opportunity to receive guidance that strengthens our spiritual lives and challenges us to be more loving and Christ-centered.

Sunday Services

In response to the pandemic, we celebrated the Eucharist under the trees on the lawn in front of the church, weather permitting. As winter approached, we initiated a “car communion” Sunday service option in our parking lot: parishioners remain in their cars, tune to the broadcast on their radios, watch the service on an outdoor platform, and receive communion wafers through their car windows. Our worship experience is an important aspect of our communal well-being and we will continue to focus energy to improve it.

7:45 AM	Holy Eucharist Rite I traditional spoken liturgy – indoors
9:00 AM	Shortened, contemporary Holy Eucharist with music During COVID — Outdoor/In-Car Holy Eucharist with music
10:15 AM	Holy Eucharist Rite II formal liturgy with music – indoors and live streamed

Weekday Services

Live streamed prayer services are currently offered on Tuesday, Wednesday, and Thursday mornings.

Holy Day Celebrations

Throughout the Church year, Holy Days are recognized with worship and other traditions at the Episcopal Church of the Advent. The season of Advent is celebrated each week with intergenerational events between worship services. These events often include community service projects. A Saint Nicholas Day service is enjoyed by our young families. The instant Christmas pageant is a highlight of the Advent season and enjoyed by parishioners of all ages. On Christmas Eve and Christmas Day, we offer several worship opportunities to share the joy of the season with our community. During Holy Week we hold nightly services, culminating in an Easter celebration that is joyous and lively, followed by the annual Easter egg hunt on the lawn. Other notable services during the year include the Blessing of the Animals, a Veterans’ Day service, and a community Thanksgiving service.



We value
**spiritual guidance
and leadership**
provided by
both clergy and
lay people



Lay Ministry Support

Our schedule of services is supported by numerous parishioners in various roles: ushers and greeters are our welcoming team; lay readers, Eucharistic ministers, and acolytes serve during the services; altar guild members assist before and after services; Eucharistic visitors spread the Word and bring communion to our home-bound parishioners; and the Prayer Circle is activated whenever the need arises.

Music Ministry

Advent's music program is a vital and highly valued ministry, featuring choral and instrumental offerings. Advent is home to an extraordinary 1990 3-manual 59 rank Möller pipe organ which is complemented by two church pianos and various instrumentalists. Pre-COVID, two choirs participated in worship throughout the liturgical year: Advent Children/Youth Choir and the adult Chancel Choir. Currently the Chancel Choir sings during the Rite II indoor service with COVID safety strategies in place. The Chancel Choir leads the congregation in selections from the traditional 1982 Hymnal, Wonder, Love and Praise, and Lift Every Voice and Sing. Other musical activities include blue grass services, jazz services, and a Veterans' Day choir. Guest soloists and instrumentalists frequently join these choirs. Additionally, a five-octave handbell choir provides musical offerings monthly.

Beginning in 2002, Advent Community Concerts occur several times each year. These Sunday afternoon events feature classical music or jazz vespers. The freewill offerings from these concerts have supported outreach programs for the homeless, prison ministries, and local food shelters, as well as other charitable organizations.

PRIORITY:

Make necessary changes to attract families with children and youth to our church.





We value
our interpersonal
relationships with
our clergy and
each other, and
our personal
relationship
with Christ

PASTORAL CARE

Pastoral care at The Episcopal Church of the Advent is fundamentally about relationships -- a ministry of compassionate presence. It is about loving your neighbor and God through healing, sustaining, reconciling, guiding and nurturing. We recognize that ministry to those in our congregation is very important to our identity as a community of faith. Our parishioners faithfully participate in this ministry through various programs.

Lay Pastoral Care Activities:

- Visitation Ministry
- Altar Flower Distribution
- Casserole Bank
- Funeral Receptions
- Prayer Chain
- Prayer Shawl Ministry
- Eucharistic Visitors
- Baptism Mentors

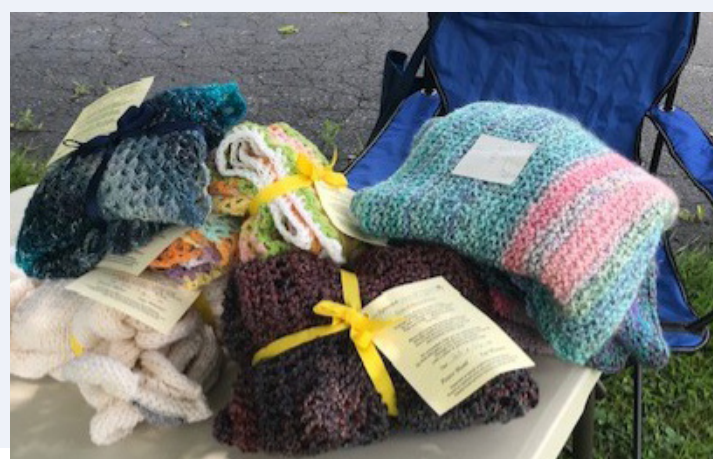


The pandemic has created challenges in providing pastoral care to our home-bound and ill parishioners and to those living in local retirement communities. The visitation ministry, flower delivery, the casserole bank, and Eucharistic visitors have been particularly affected by COVID restrictions but have adapted their approaches to providing care. Baptisms have been privately celebrated and funeral receptions have been limited.

During the current discernment process, a prayer team is leading our congregation and lay leaders through suggestions of intentionally written daily prayers, which are available as handouts and posted on our website. The prayer team's guidance and commitment is a constant presence in this time of transition.

PRIORITY:

Develop ministries that work toward healing those broken by life circumstances.





We value
a church family
that is welcoming
and provides
a sense of
community



PRIORITY:

*Develop and implement
a comprehensive strategy
to reach new people and
incorporate them into the
life of the church.*



PRIORITY:

*Create more opportunities
for people to form
meaningful relationships.*

+ EVANGELISM

Newcomers/Membership

We are a welcoming community and enriched by those from many different walks of life. We maintain a friendly atmosphere and encourage all members of our church family to reach out to newcomers. Ushers welcome everyone who enters the church for worship, paying special attention to visitors. They provide guidance and information as requested to ensure a comfortable worship experience for all. As COVID precautions change, we look forward to resuming newcomer coffee hours on Sundays, as well as newcomer potluck dinners, and other casual, fun, family-oriented evenings.

Fellowship

Beyond worshipping together, parishioners at The Episcopal Church of the Advent strongly value fellowship activities. Gathering to share a meal or activity, to make new friends, and to deepen relationships is very important to us. Although it has been disappointing that we have been unable to have indoor fellowship activities for over two years, we look forward to resuming them as soon as that is possible. Advent members have enjoyed each other's company during the following traditional events.

- Sunday Morning Coffee Hour
- Spaghetti and Chili Dinners
- Welcome Back Picnic
- Shrove Tuesday Pancake Supper
- Lenten Potluck Suppers
- Easter Brunch and Egg Hunt
- Pentecost Picnic
- Memorial Day Parade



Communication

To build a strong Christian family, we communicate through various means. The pandemic challenged our creativity and new technology has provided us the opportunity to offer Sunday services that are live-streamed, as well as posted online for viewing at other times. Our website, www.adventks.org is an up-to-date source of information, as is an online newsletter that is published weekly. Mass emails, automated phone messages, and Facebook assist in the sharing of information with our church community, as well as with those who might be interested in joining us. We are proud that our communication strategies have kept our members informed and participating in worship during the pandemic, and that we have found new members via our online presence. A group of amateur photographers help us to share Advent's story with our congregation, on Facebook, and on our website.





*We value
spiritual growth
and maturing
in our faith in
an atmosphere
of openness and
acceptance.*

+ CHRISTIAN EDUCATION

Our church offers Christian education opportunities for people of all ages to grow in faith and understanding of what God is calling us to be and to do. Continuing to provide more opportunities for education and formation is a high priority for Advent. In addition to structured and informal programs for children and youth, there are year-round offerings of Bible studies, children's chapel, Confirmation, and youth groups.

For the youngest members, Advent has provided nursery care, children's chapel, and traditional Sunday school using the Godly Play curriculum. Our Director of Children and Youth Ministry is currently utilizing the Illustrated Ministry Curriculum and taking a "one room schoolhouse" approach to Sunday school as we figure out what this ministry looks like in pandemic times. Students in middle school discuss faith, beliefs, and rituals affecting them as they participate in Confirmation classes led by lay and ordained staff. During this journey, Advent students enjoy sharing their

explorations of faith with peers from neighboring St. Michael's Lutheran Church. A few of our high schoolers collaborate with adult leaders to create structured programs, fellowship, and mission activities for themselves and their peers, and always look forward to the Good Neighbors mission trip work camp over the summer.

The adult education commission offers educational and motivational programs that help our congregation grow spiritually, strengthen

our commitment to Christ, walk closer to each other in faith, and be better equipped to express and model Christian values in our lives. Some activities of the commission are Bible study, book groups, adult forums, quiet days, informative speakers, and Lenten programs.

The pandemic has challenged our approach and creativity regarding Christian education. Godly Play lessons, for our youngest members and their families, were videoed and emailed weekly and posted on the Advent website and Facebook. Our youth met outside or over Zoom to stay connected in worship and fellowship. Advent's adult community continued Bible study, discussion groups, and book studies on Zoom. Informative speakers gave presentations which were live-streamed and recorded for Facebook.



PRIORITY:

*Provide more opportunities
for Christian education
and spiritual formation
at every age and stage
of life.*



We value
active ministries
in the church,
in the community,
and in the world
around us.

+ SERVICE - PARTNERSHIPS IN MISSION

There are two components to mission, the spiritual component of evangelism and the outreach or development component. For this reason, we have renamed our former “Outreach Committee” as **Partnerships in Mission** to honor both aspects of mission. The goal of Partnerships in Mission is to enable our congregation to actively minister in Christ’s name to those in need, and to work for justice, freedom, and peace. Advent’s parishioners donate their time, talents and treasure to worthy causes in the Kennett Square and Chester County communities, as well as national and diocesan programs. Our congregational survey showed that our members are positive about all aspects of ministry: identifying their call, engaging in active ministry, supported in their efforts, and having opportunities to serve.

The Church of the Advent Currently Participates with and Supports the Following Local Agencies:

- After-The-Bell Program at Kennett Middle School
- Chester County Youth Center
- CommUNITY of the Greater Kennett Area
- Family Promise of Southern Chester County
- The Garage
- Good Neighbors Home Repair
- Kennett Area Community Services and Food Cupboard
- LaMancha Animal Rescue
- Little Free Pantry
- Mighty Writers
- Mision Santa Maria
- Orphan Grain Train – Kids Against Hunger
- Wings for Success
- Young Moms

And the Following National/International Agencies:

- Episcopal Relief and Development
- Operation Warm
- Project CURE
- United Thank Offering





Pandemic-Related Community Service Alternatives

The pandemic has created challenges in our outreach opportunities and use of our church building. To continue to provide contributions to local agencies, a new donation initiative “Stop, Drop and Roll” has taken place in our parking lot. Little Free Pantry, an emergency food distribution site, has been installed in the parking lot to support those experiencing food insecurities. Instead of our indoor rummage sale, an outdoor flea market was held this past year. Also during COVID, puzzles, greeting cards, and calendars were collected for our local senior citizens and veterans.

PRIORITY:

Expand outreach ministries that provide direct services to those living on the margins of society.

Use of the Church Building

Although the pandemic closed our church building to outside groups for a period, we have re-opened our facilities to the following organizations:

- Kennett Square Preschool Cooperative
- Red Cross Bloodmobile
- Girl Scouts
- Alcoholics Anonymous
- KACS Bridges Out of Poverty Program
- Garden Club
- Kennett Square Borough Polling Location



STEWARDSHIP – FINANCIAL SUMMARY

Our Membership

Membership of our **267** households is predominately from the Kennett Square, Unionville-Chadds Ford, Avondale and West Grove areas. These communities are largely composed of single-family homes; however, some members reside in some of the area's over-55 and retirement communities.

Our Stewardship

The Church of the Advent's average pledge has been relatively stable over the past five years, in both the number of pledging units and average amount. The average pledge amount is **\$3,321** per giving household and the 2022 pledge program resulted in **150** pledge commitments from a total of 267 member households.

Our Budget

Below is a summary of our budget. As can be seen, we have consistently run a surplus over the last three years due to strong cost controls and continued generous giving by the congregation.

Budget Summary		2019	2020	2021
		Actual	Actual	Actual
Sources of Funds		\$834,009	\$788,332	\$956,575
	Pledge Income	\$526,896	\$540,395	\$534,844
	Endowment & Reserve Income	\$200,497	\$91,137	\$352,670
	Other Gifts & Plate	\$86,532	\$65,467	\$62,678
	Christmas/Easter	\$11,660	\$14,566	\$5,225
	Fundraising	\$8,424		\$1,158
	Other		\$76,767	
Use of Funds		\$766,306	\$677,629	\$837,672
	Mission Ministries	\$129,926	\$78,568	\$76,983
	Operating Ministries	\$512,936	\$485,102	\$401,451
	Infrastructure (B&G/Interest)	\$96,718	\$91,068	\$88,444
	Capital Expenditures	\$23,685	\$16,014	\$270,794
	Other	\$3,041	\$6,877	
Surplus/(Deficit)		\$67,703	\$110,703	\$118,903



*We value
a spirit of
generosity
that enables us to
reflect Christ's
love to others.*

Perpetual Endowment

The fund, established under the Parish By-Laws, was created to provide funds in perpetuity to benefit the work of The Episcopal Church of the Advent. The fund is governed by set of policies and procedures adopted by the Vestry in July 2008. The fund includes all bequests and endowments, unrestricted and restricted, that the Vestry determines to be a part of the corpus of the endowment funds under the control of the Parish. The fund is currently supervised by a group of five to seven active church members and managed by an external investment manager. The Rector is a full participant in endowment discussions.

The assets of the endowment are governed by an investment policy statement that was updated in

2021. At present, distributions are made from the unrestricted portion of the funds equal to 5% of the fair market value on September 30th of each of the previous three years. Endowment income funded approximately 10% of The Episcopal Church of the Advent's 2021 operating budget. No portion of the Endowment Fund's principal is borrowed for any reason, including temporary of capital needs of the parish.

The church recently completed a capital campaign that raised approximately **\$1.6 million** to support the building and campus capital improvement needs. This combined with the current market value of the combined endowments of **\$3.1 million** should provide significant support for the church in the future.



+ STRENGTHS AT ADVENT

The following attributes of our congregation have been derived from the Holy Cow! Consulting congregational assessment which was performed in February 2022. The executive summary is available at www.adventks.org

Hospitality

Hospitality is a strong characteristic of ours. Primarily, we report that we are a welcoming community and enriched by those from many different walks of life. We feel that our congregation has brought meaning to our lives, that a friendly atmosphere prevails, and that we show genuine concern and care for one another in times of need.

Ministry

We recognize that ministry to those in our congregation (pastoral care) and to those in the world (outreach) are especially important to our identity as a community of faith. Members are positive about all aspects of ministry: identifying their call to ministry; prepared to engage in active ministry; supported in their efforts and have opportunities to serve.

Spiritual Vitality

We strongly affirm our connections with God and the integration of faith in our lives.

Different Faith Journeys Under One Roof

A large majority affirm our ability to resolve conflict through mutual effort and perceive a healthy tolerance for differing opinions and beliefs. We manage conflict in ways that much of the congregation experience as healthy. Our ability to hold and learn from these different perspectives could be an important strength in attracting new members.



Governance

The congregation positively perceives Vestry leadership.

Engagement in Education

Continuing to provide more opportunities for education and formation is a high priority for us. Church members of all ages are motivated and looking for new opportunities.

Financial Stability

Our successful stewardship drives, capital campaigns and endowments provide Advent with security and opportunities to focus funding as needed. Currently, our budget is balanced, and we have an operating surplus of funds.

Attractive and Functional Campus

Advent's Kennett Square location, with large parking lot, rectory, parish hall and commercial kitchen is a gem in the community. Our support staff and technology resources supplement the efficient functioning of this facility.

OPPORTUNITIES FOR IMPROVEMENT AND GROWTH

Our Holy Cow! Consulting congregational assessment has identified areas for further discussion to help us move toward higher satisfaction and energy in our congregation and address our priorities. The following list of ideas may assist our new rector in providing direction for the future.

Attending to the Strategic Growth Plan

To formalize Advent's plan for the future, a strategic growth plan had been developed in 2021, outlining target populations and defining core activities. Implementation and execution of the plan will be a multi-phased project, spread over several years. Consistent with the results from our congregational assessment, the plan identifies the areas of worship, formation, fellowship, outreach and technology. The Strategic Growth Plan document can be found on Advent's website www.adventks.org

Clarifying Our Mission and Purpose

About one-quarter of our congregation does not understand or agree with our mission statement. It is important to discern what is needed to create stronger communal connection and force of engagement in our mission and review the relevance, persuasiveness, and the suitability of our mission statement.

Investing in Our Faith Formation

Christian formation is an important priority for both our adults and youth, yet the vision and level of participation in Christian education could be improved. Clarifying our vision of what constitutes effective Christian formation and exploring methods, topics, characteristics and skills needed in the 21st century church would be compelling for our programming.

Exploring Our Culture and Climate

Although we are generally a progressive congregation, we are also settled in our practices. We certainly see the need to make some change in the life and operations of our congregation and we desire that change. Yet we demonstrate that we are rather comfortable with familiar ways and rituals. To gain flexibility, efforts should be made to investigate ways in which we might go about renewal and how we might experiment with new ways in aspects of our congregational life and worship.

Utilizing Strong Leadership

We identify that we possess and trust our lay leadership. We can use our leadership to move the congregation strategically and creatively, rethinking how we respond to the needs of members as well as the needs of those we are trying to reach in our community.

Utilizing Our Strengths

We perceive strengths in hospitality, governance, ministry and education. How might we use these strengths to help us grow?

Reviewing Our Worship Experience

The quality of our worship experience is a top driver of our satisfaction (and is key to our overall vitality), yet our worship experience received rather mediocre scores compared with other congregations. Further discussion about worship experiences and where we might focus energy to improve the experiences is warranted.

Exploring Our Stewardship Practices

Our survey results indicate that our older members pledge out of civic responsibility, while our younger members make pledges to symbolize connectedness to the church community. New approaches and strategies in our stewardship pledge drive could be investigated and initiated.



THE LEADER WE SEEK

A history of traditions has made The Episcopal Church of the Advent a strong, resilient, and welcoming church. Our next rector will be part of our new traditions as we prepare Advent to be a church of the future. Keeping in mind our congregation's climate and culture, our new rector will help guide us to live God's word with vision, creativity, and spirit toward our stated priorities.



Our congregation is seeking a leader with the following abilities and interests:

Entrepreneurial Priest

Our next rector will look with excitement about leading a congregation that is seeking growth and living out our mission of "making Christ visible...." Our next rector will be a visionary and innovator that opens us to fresh resources and ideas, especially in the areas of family life ministry and worship, pastoral care, formation, and lay ministry.

Warm and Joyful Pastor

Our next rector will demonstrate the capacity to engage us empathetically, to care for us in times of need, and to help us through the discomfort of change. As we revitalize our mission, our rector will accept us with loving kindness, join us in warm fellowship, and

exemplify a joyful life in Christ. A sense of humor is appreciated at Advent, too.

Spiritually Grounded Preacher and Teacher

Our next rector will possess a passion for preaching and offer sermons that connect us to God's word and inspire us to live our mission more fully. Our rector will have the capacity to deepen our understanding of our faith and nurture us along our spiritual journeys.

Change Facilitator

Our next rector will honor the traditions of our faith and liturgy, but also help us to gradually move out of habitual cycles of established activity into renewed ministries aligned with our mission and the needs of the community. Our rector will possess skills to help us resolve conflict when it arises.

Strategic Leader

Our next rector will lead by discerning and cultivating the spiritual gifts in the laity and staff, empowering their work, and appreciating the results of their efforts. Our rector will work with us collaboratively to prioritize our opportunities for growth and have the capacity to manage church operations.



+ OUR COMMUNITY OF KENNETT SQUARE, PA

The Episcopal Church of the Advent is nestled on the northern edge of Kennett Square, PA the Mushroom Capital of the World. Kennett produces half of the country's mushrooms and its pride is evident in the annual Mushroom Festival in September and the lighted mushroom that drops every New Year's Eve. The little town of 6,000 people features a variety of restaurants, boutiques, and specialty shops on tree-lined streets. Kennett's mushroom industry draws many migrant workers whose culture, music and food are distinctive in the area. In the Christmas season, carolers from Advent and other churches treat shoppers and patrons to carols in English and Spanish.

Located in the Brandywine Valley of southeastern Pennsylvania, Kennett Square is in convenient proximity to Philadelphia, Wilmington, New York, Baltimore, and Washington DC. Many cultural and historical sites are nearby, including Long-

wood Gardens, Winterthur, the Brandywine Battlefield Park, stations on the Underground Railroad, and the Brandywine River Museum among others. The rolling hills around Kennett feature fox hunts, polo, and steeplechase events. The nearby Brandy-

wine River has been protected for nearly 80 years by the oldest watershed association in the country, the Brandywine Red Clay Alliance, and hosts canoe trips and tubing. The surrounding landscape has inspired generations of artists, including the Wyeth family. The Anson B. Nixon Park, within the Kennett Square borough, offers one of many walking opportunities in the area.



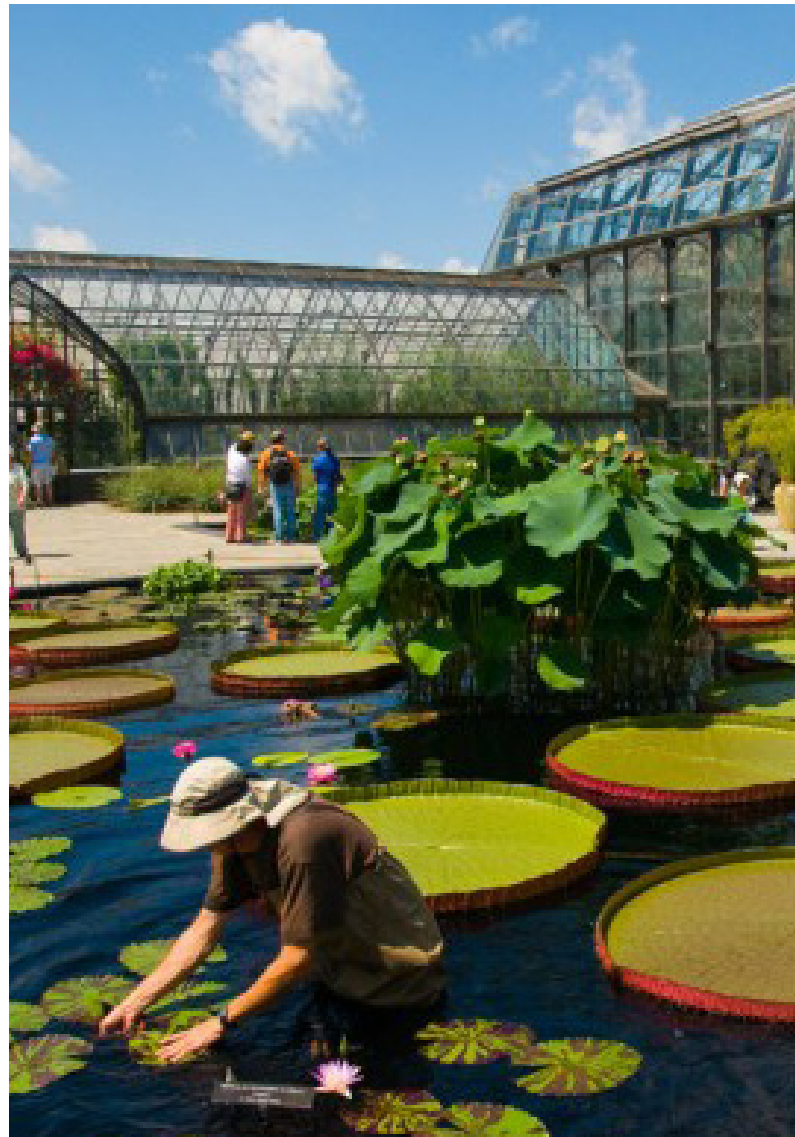


Most of Advent's regional congregation lives within a 15-minute drive from the church. This geographic area is home to a population of 72,000 and is 75% non-Hispanic. The area has a median household income of \$115,000 and a poverty rate of 4 %. The median home value is \$427,000 and 58% live in "affluent estates."

The church draws its congregation primarily from three school districts: Unionville-Chadds Ford, Kennett, and Avon Grove. Of the 501 school districts in Pennsylvania, they are highly regarded schools academically and are ranked 6th, 54th, and 65th respectively by *US News*.

In contrast, according to the Neighborhood Missional Intelligence Report from the Diocese of Pennsylvania, the population within a 5-minute drive from Advent is very diverse and comprised of 51% non-Hispanic and 49% Hispanic individuals. Thirty-nine percent of the households speak a language other than English. Median household income is \$81,000 with 26% of the population living in "ethnic enclaves." The poverty rate is 7%. This is the primary area served by Advent's outreach ministries.

A brief introduction to Kennett Square can be found at www.historickennettsquare.com
<https://kcc.kendal.org/community-life/things-to-do-in-kennett-square>





✝ VOICES OF THE PARISH

The Episcopal Church of the Advent is ...

A happy, solid group of parishioners

A stable environment for people to find solace

Accepting of diversity in lifestyles and backgrounds

Meaningful worship

Compassion for those in need

Building intergenerational relationships

A community of love and caring

Friendliness and openness to all

A genuine sense of welcome

A friendly, inviting environment

A casual overall atmosphere

The beauty of liturgical worship

A strong, engaging music program

An opportunity to grow in faith and ministry

Commitment to community outreach

The beauty and integrity of the memorial garden

Fellowship and gathering opportunities

Love, faith, hope

