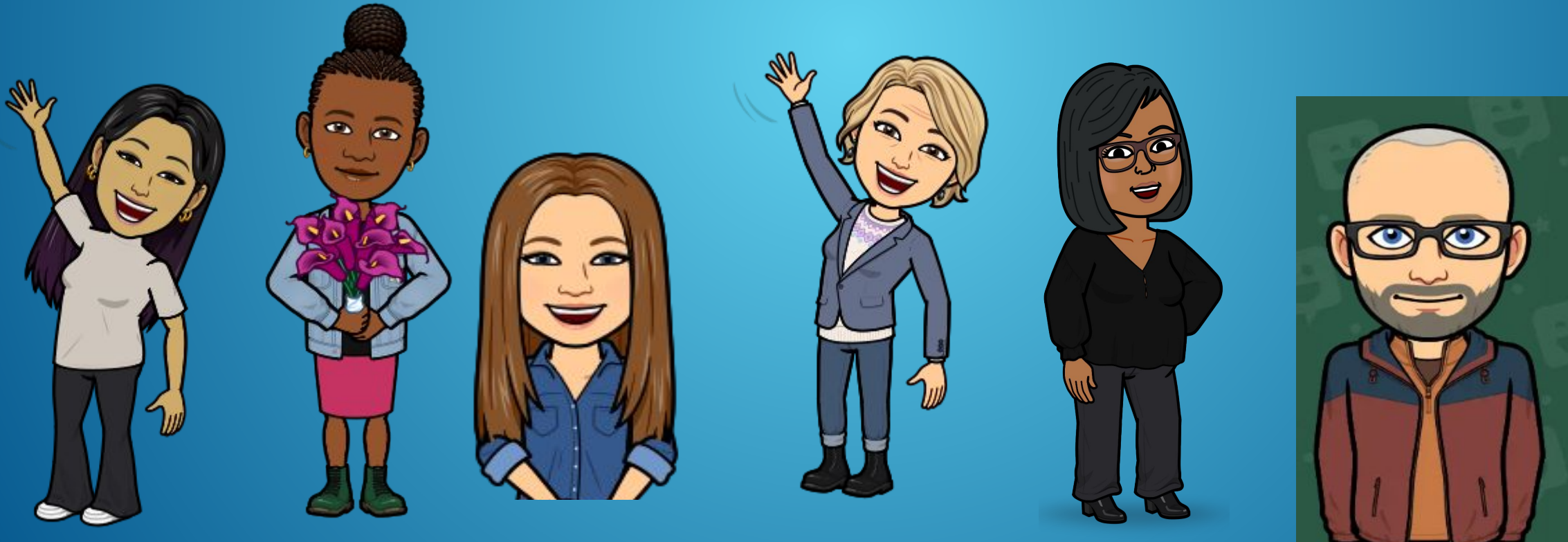


STUDENT SERVICES AT SCITECH



Mrs. Wendy Emery CRNP, CSN
Nurse Practitioner
wemery1@pghschools.org
412-529-7654



Mrs. Wendy Emery

School Nurse Practitioner

Overview of Health Services

- State mandated screenings for every student (grades 6-12)
 - 2 vision screenings (near and far)
 - Audiometric testing (6, 9, all students with IEP)
 - Growth screening & Body Mass Index letters
 - Mandated physicals (grades 6 & 9)
 - Sports Physicals
- Coordination of chronic disease management in school
- Staff training
- Immunization surveillance and monthly county and state reporting
- Episodic care

Ms. Holly Blattler Eidinger
School Social Worker (students last names A-K)
hblattlereidinger1@pghschools.org
412-529-7626

Mr. John O'Connell
School Social Worker (students last names L-Z)
joconnell1@pghschools.org
412-529-7610

SciTech Social Workers



-Provide case management services including referrals to community resources & collaboration with other professionals who provide services to students.

-Assist students and families by providing crisis management services (especially when the student does not have a back up treatment team) and connecting students to community resources for further assessment.

-Conference with students and families to discuss issues related to truancy and develop Student Attendance Improvement Plans. Communicate with parents regarding absences to school.

-Assist students and families dealing with homelessness, hunger, violence, neglect/abuse to access resources like shelters, food and medical care.

-Member of 504 team, MTSS team & SAP team



SciTech Social Workers

Overview of Student Assistance Program (SAP)

- Systematic team process used to mobilize school resources to remove barriers to learning.
 - SAP is designed to assist in identifying issues including:
 - alcohol
 - tobacco
 - other drugs
 - mental health issues
- Professionally trained team, including school staff (administrators, regular and special education teachers, SS team, psychologist) and liaisons from community drug/alcohol and mental health agencies.
- SAP team members are trained to identify issues, determine whether or not the presenting issue lies within the responsibility of the school, and to make recommendations to assist the student and the parent. When the issue lies beyond the scope of the school, the SAP team will assist the parent and student so they may access services within the community. SAP team members do not diagnose, treat or refer to treatment; but they may refer a student to a liaison who may screen or assess for further community based services and support.



Mrs. Maggie Totterdale, M.S.

Transition Counselor

mtotterdale1@pghschools.org

412-329-8756 (GV)

hi



Mrs. Maggie Totterdale, M.S.
Transition Counselor

Transition services provided to students with IEP's who are ages 14 and older.

- Post Secondary Planning
- Vocational Assessments
- SAT/ACT/CHS course Accommodations
- Facilitate connections with community agencies

Schools: SciTech & City Connections

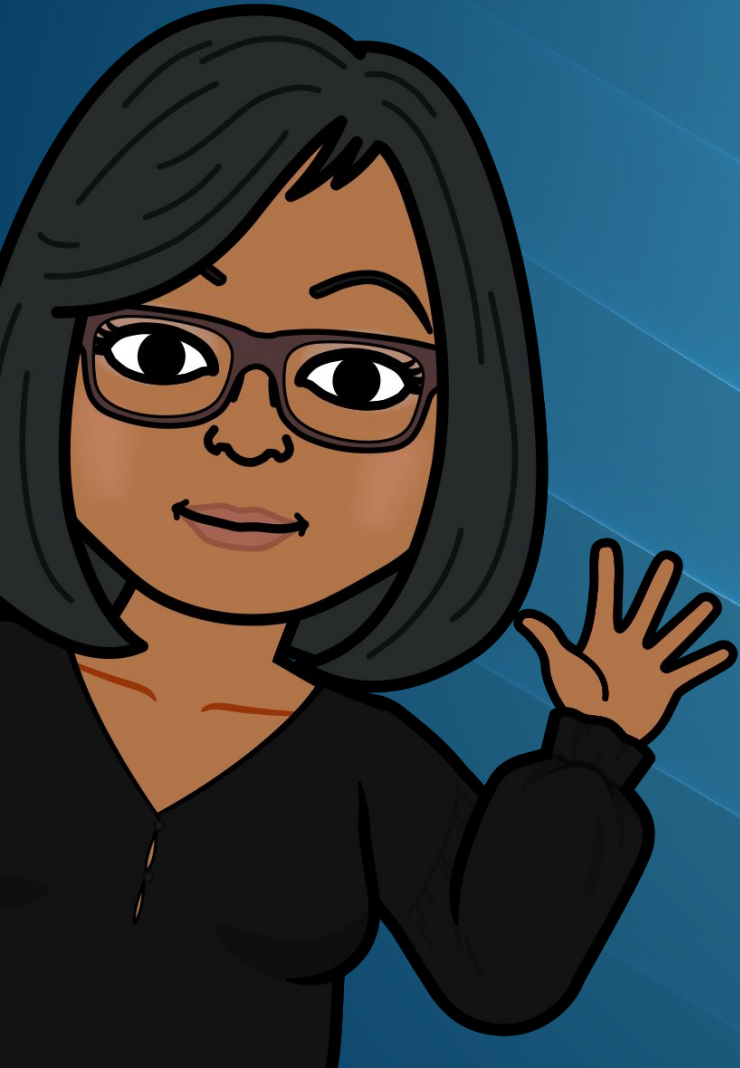


Mrs. Khadija Gray BS
School Counselor, Grades 6-9
kgray1@pghschools.org



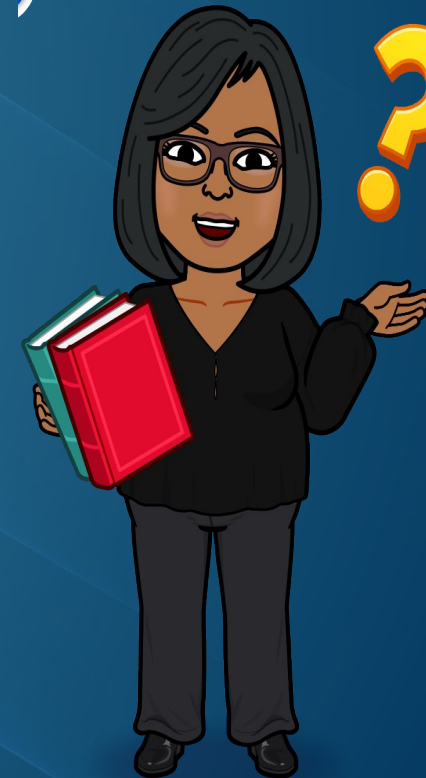
Ms. Nneka Shelton M.S., M.S.Ed.
School Counselor Grades 9, 10, 11, 12

hey.



Ms. Shelton and Mrs. Gray
School Counselors

Academic Counseling
College/ Career Planning
504 Plans
Conflict Mediation
Academic Supports
Scheduling Questions/ Concerns
Financial Aid Information and Night
SAP Team
MTSS
Naviance
Pittsburgh Promise



TESTING INFO

Accommodations requests

Free resources:

SAT- www.khanacademy.org/sat

ACT- <https://cloud.e.act.org/free-practice-act-test>



www.collegeboard.org or www.sat.org

Accommodations requests
Costs: \$60

Location: varies

SAT will be offered at SciTech in March for all 11th graders



www.act.org

Accommodations requests

Costs: \$68

Location: varies

GRADUATION REQUIREMENTS- 26.5 CREDITS

ENGLISH-4 credits

MATH- 4 credits

SCIENCE- 4 credits (Bio, Chem, Physics)

SOCIAL STUDIES- 4 credits (Civics, World History, US History/African-American History)

FOREIGN LANGUAGE- 2 credits of the same language

HEALTH- .5 credits

PE- 1 credit

MUSIC/ART- 1 credit

CONCENTRATION and ELECTIVES- 6 credits

KEYSTONE

GRADUATION REQUIREMENTS- 26.5 CREDITS c/o 2027

ENGLISH- 4 credits

MATH- 4 credits

SCIENCE- 4 credits (Bio, Chem, Physics)

SOCIAL STUDIES- 4 credits (Civics, World History, US History/African-American History)

FOREIGN LANGUAGE- 2 credits of the same language

HEALTH- .5 credits

PE- 2 credits

MUSIC/ART- 1 credit

CONCENTRATION and ELECTIVES- 5 credits (includes Financial Lit)

KEYSTONE