



# Safety for K-12 Education

---



# School Safety & Compliance for K-12

## Complete Solution

- » Compliance
- » Kari's Law
- » RAY BAUM'S Act
- » School Safety: Alyssa's Law — Upcoming state law\*
- » Messaging & Notifications
- » SIS Integration
- » Panic Buttons — deskphones and virtual options available
- » Real-time two way communication between police & school personnel
- » Single pane of glass for ALL security & compliancy operations

911inform LDS



## ACCESS FREE PANIC BUTTONS FOR YOUR MOBILE DEVICES

- 911 Calling
- Medical Emergency
- Silent Alarm
- Lockdown Building or Entire District
- Shelter in Place
- Fire
- Active Shooter
- Bomb Threat

*\*All Panic Buttons can be customized to your district's needs.*

\* Sate law in NJ, FL, NY — Enacting in other states now

- Free to Police & Public Safety
- Gives Police Situational Awareness
- Reduces Response Time for Emergencies

## Kari's Law



System must allow direct access to 911 without any access codes.



System must provide on-site notification that the call has occurred and from what station.

## RAY BAUM'S Act



Any call to 9-1-1 must deliver a dispatchable location to the PSAP/ECC (Public Safety Answering Point/Emergency Communications Center)



Any call to 9-1-1 must deliver a dispatchable location to on-site personnel.

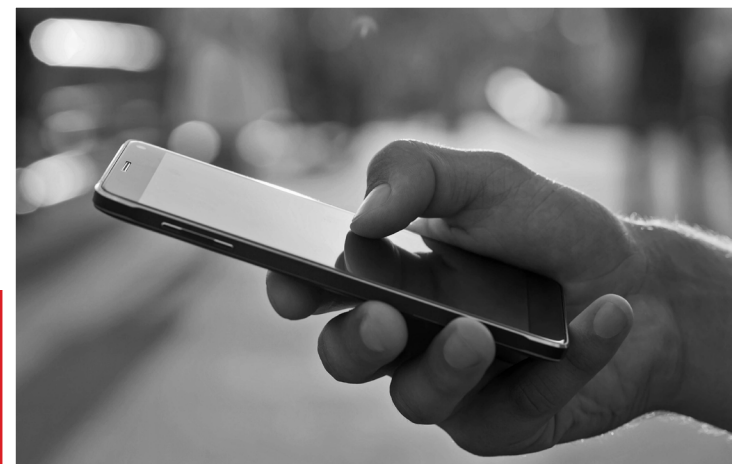
## Alyssa's Law



All public elementary and secondary schools to install either panic alarms or alternative emergency mechanisms approved by The Department of Education.

111

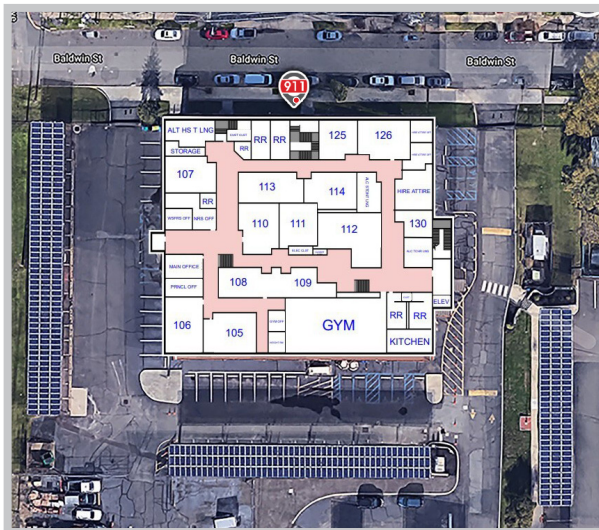
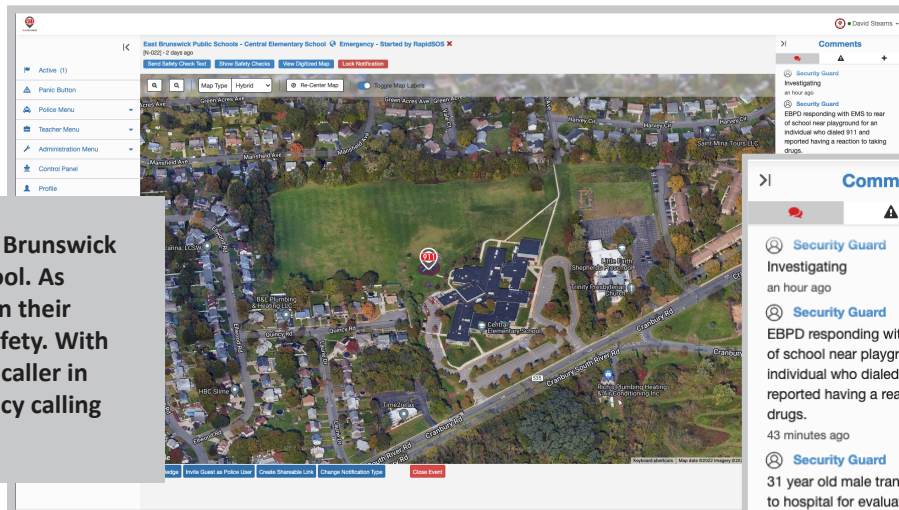
Alerts sent to the school do not contain the phone number or other personal information about the caller maintaining complete anonymity and privacy. The notifications are generated by the carrier network and the PSAP/ECC allows any device to call 911 within a geofence without having a prior relationship. Each notification provides the school with information of when a call was placed and where with an overhead view of the property.



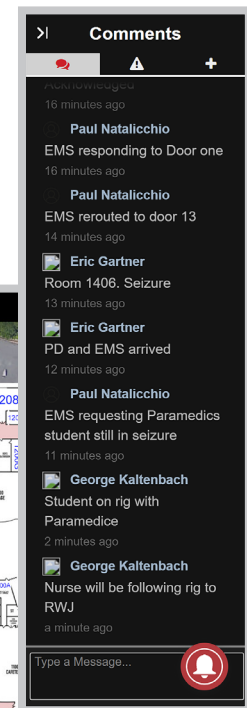
### Sample Emergency Notification

# Case Studies

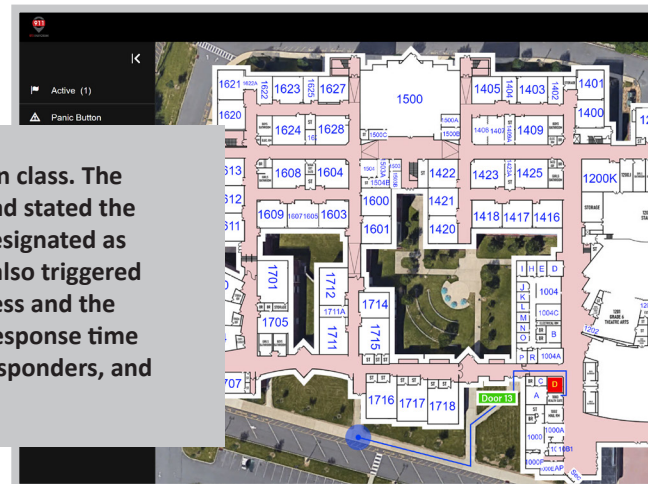
On the evening of June 15 at approximately 12:29 a.m. the East Brunswick Police Department received a call from Central Elementary School. As a 911inform customer, our notification software triggered within their geo-fence alerting the security administrator and local public safety. With our digitized maps, both parties were able to quickly locate the caller in distress. The officer on duty proceeded with a medical emergency calling for local EMS to take a young male to the hospital.



An older gentleman was out for a walk one afternoon around a local school in New Brunswick, NJ and suddenly tripped on a piece of broken sidewalk. A passing vehicle witnessed the gentleman fall and not get back up. Dialing 911 from their vehicle they contacted the local police for assistance. Meanwhile, the vehicle triggered the 911inform software from being inside the school's geo-fence. The security admin on duty was able to aid the gentleman and wait for the police outside within 6 minutes from the notification.



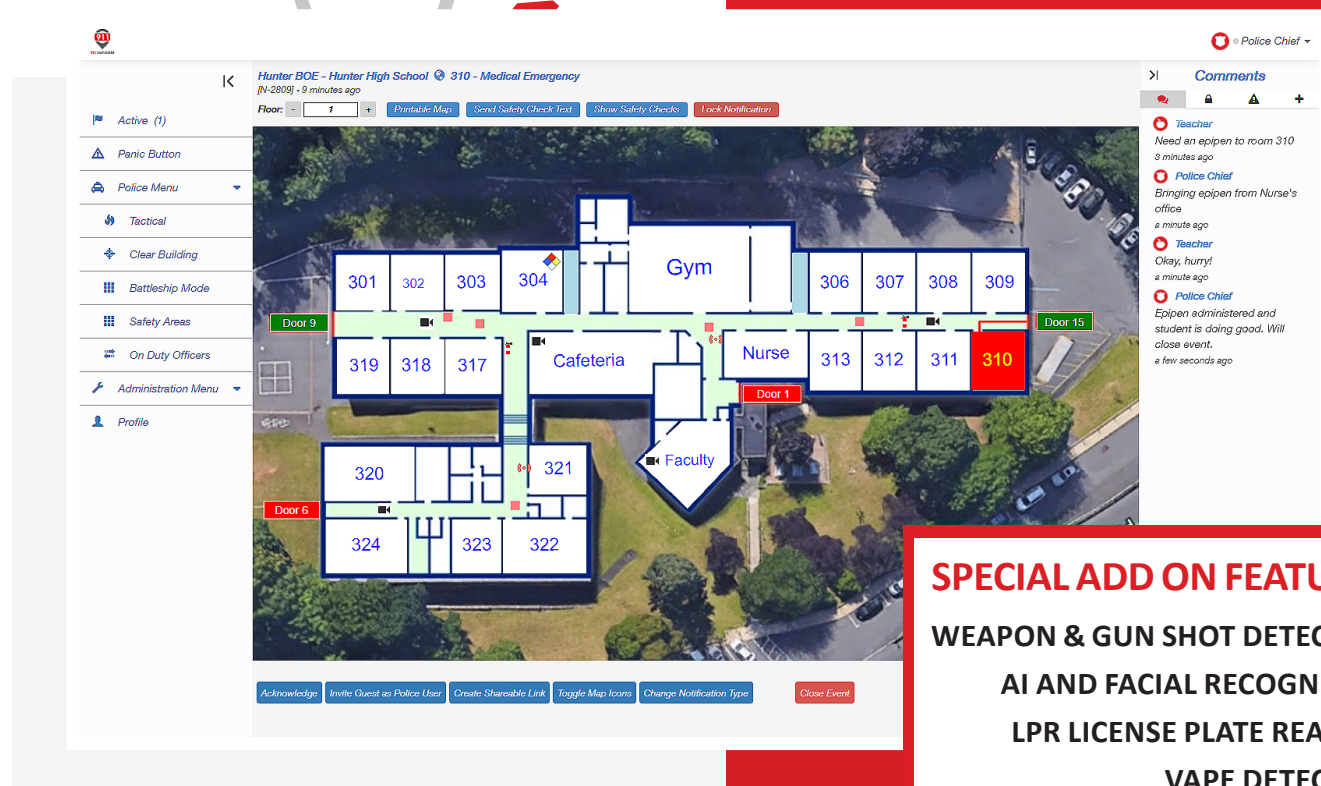
In the middle of the school day a student suddenly started having a seizure in class. The teacher acting quickly called 911 for assistance. The schools phone carrier had stated the emergency from 15 miles away at the administration building since it was designated as the BTN or billing telephone number. As the call was placed 911inform was also triggered alerting building security AND the local first responders for the correct address and the closest door to enter to get to the student in distress. With 911inform, the response time was cut by 15 minutes, the correct building/address was delivered to first responders, and displayed the fastest route to the emergency.





# Connected Building Controls

- » PBX Phones
- » Camera Integration
- » Door Controls
- » Strobe Lights
- » Alarms
- » Voice Controls (Paging)
- » Speakers
- » SIS
- » Common Messaging Platform
- » Screen Pop
- » AEDS / Chemical / Fire Extinguishers
- » Battleship Mode
- » Clear Room Mode
- » Reunification
- » Safety Checks
- » Attendance Check-ins
- » Emergency Event Types



**INTERACTIVE Mapping**  
overlaid on Google Maps

## SPECIAL ADD ON FEATURES

WEAPON & GUN SHOT DETECTION  
AI AND FACIAL RECOGNITION  
LPR LICENSE PLATE READING  
VAPE DETECTION

## SCHOOL SECURITY & PUBLIC SAFETY FEATURES

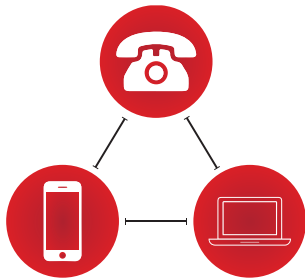
- Situational awareness inside the school
- Direct room intercom, monitor, and paging into the school
- Door and camera control from dispatch or patrol car
- Detailed floor plan mapping
- Faculty and student location displayed on floor plan
- Missing student indicators and tracking
- Clear Building and report possible dangerous objects on the map
- Tactical Mode to easily view the perimeter of the building

911inform is fully customizable to fit the functionality needs of any campus and can be integrated with various systems.

**SINGLE PANE OF GLASS**  
**FOR ALL SECURITY**  
**TECHNOLOGY NOW**  
**AND FOREVER**

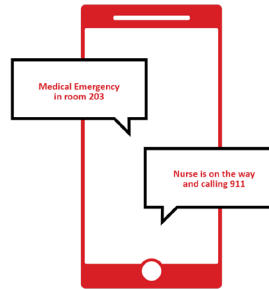
# RAY BAUM'S ACT » KARI'S LAW » ALYSSA'S LAW

ALL THREE SOLVED WITH 911INFORM NG911 CAMPUS SAFETY



## Compliance with Federal MLTS/PBX Legislation

Kari's Law & RAY BAUM'S Act  
DETECT – LOCATE – REPORT



## Cell Phone Notification

Notifications are instantly sent  
of 911 calls from native dialer,  
no app required



## Connected Building

Connect to Door Access Controls,  
Security Cameras, Alarms, Strobes,  
Voice Controls, Paging, Facial  
Recognition, Gun Shot Detection

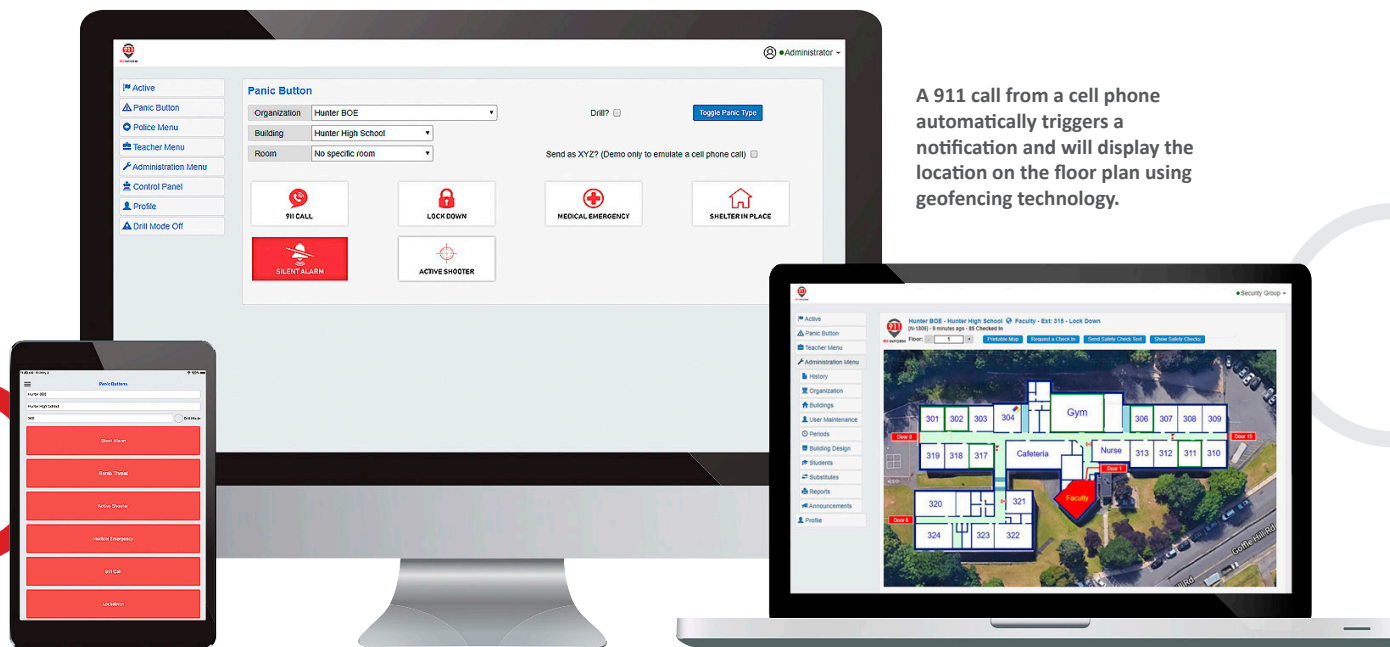




# About 911inform

911inform is a notification and emergency management solution providing state of the art tools to effectively mitigate ANY emergency situation. Our platform supports both school administration and emergency services with bi-directional communication and controls needed to successfully manage a crisis and save valuable time. Your on-site security, health professionals, or administration will immediately receive a text and/or email message alerting everyone of an emergency. This opens a direct dialog of instructions while first responders are en-route.

Using our easy-to-use mass notification system, we allow the administration to instantly know the who, what, where, and when of any emergency. Your organization assigns permissions for each user list to maintain direction for each notification type. Our notifications provide the location of a call's origin, detailed maps of the premises, real-time communication with on-site personnel (including first responders), and remote control of a building's security systems (i.e., doors, strobes, intercoms, and cameras). With an easy-to-use application, no additional software downloads, or unnecessary equipment, 911inform can help monitor your entire organization.



A 911 call from a cell phone automatically triggers a notification and will display the location on the floor plan using geofencing technology.





**CONTACT**

**Shawn Birch**

**[sbirch@911inform.com](mailto:sbirch@911inform.com)**

**833-333-1911 | ext 4277**

**[911inform.com](http://911inform.com)**