

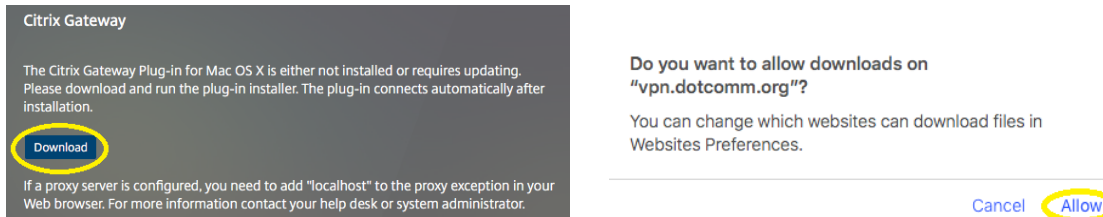
- Verify the Mac is connected to a WiFi or wired network

<<< INSTALLING >>>

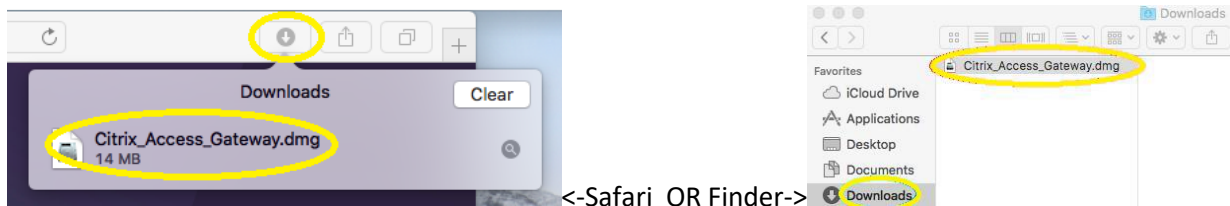
- Open Safari and browse to the site <https://vpn.dotcomm.org>, Log on with your domain username and password



- Download the Citrix Gateway Plug-in; When prompted to allow downloads click Allow



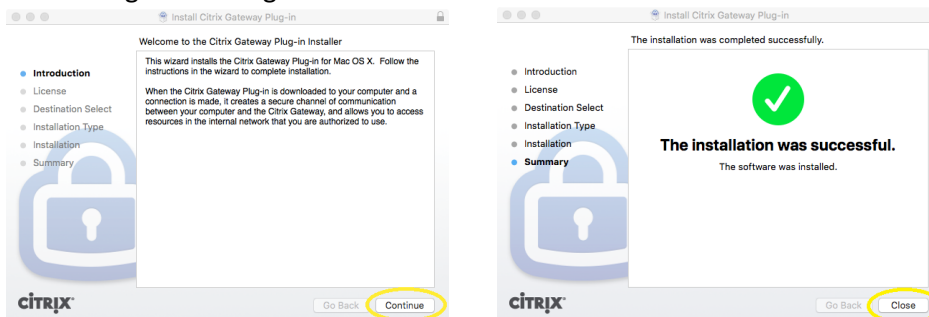
- When download is finished, launch Citrix_Access_Gateway.dmg from Safari Downloads or Downloads in Finder



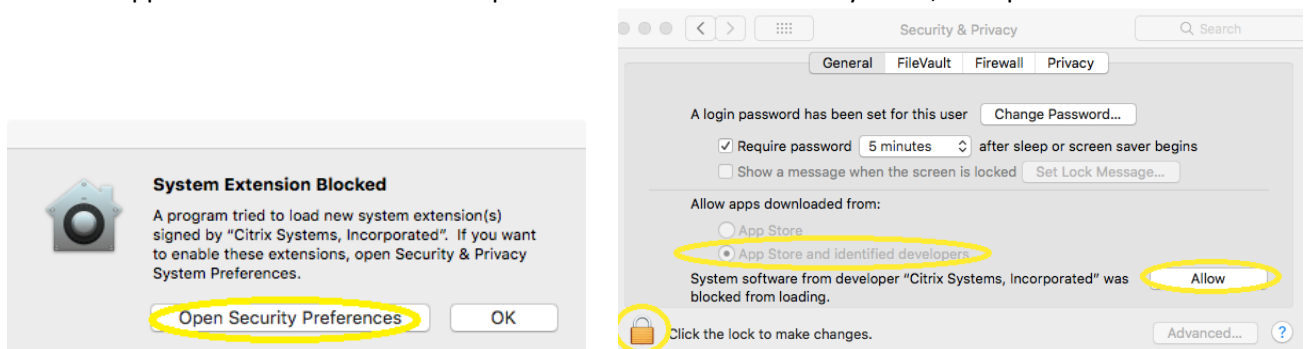
- Double-click "Install Citrix Access Gateway Plug-in"



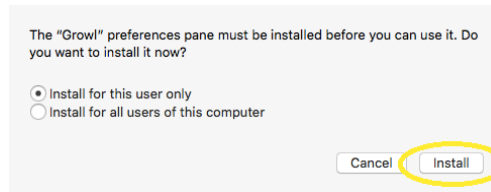
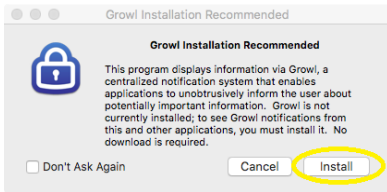
- "Continue" and "Agree" through install wizard then "Close" when successful



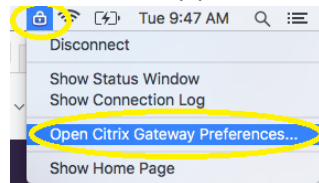
- If prompted with "System Extension Blocked" click "Open Security Preferences"; Unlock the padlock to make changes;
 - Choose "App Store and identified developers" and "Allow" for "Citrix Systems, Incorporated"



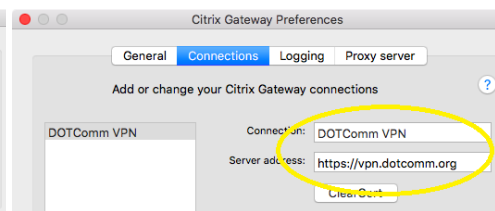
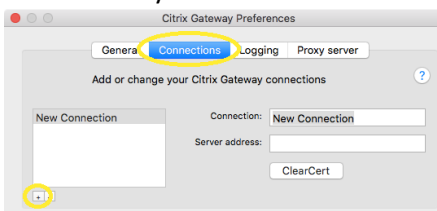
- If prompted to with “Growl Installation Recommended” click “Install” then “Install”



- Click the Citrix Gateway padlock icon on the Menu Bar and click “Open Citrix Gateway Preferences...”



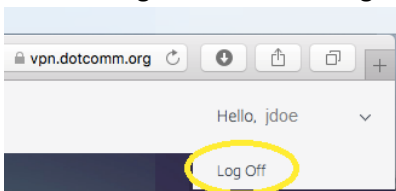
- Click the “Connections” tab, click the + to add a new connection, name the Connection “DOTcomm VPN” (or something similar), in the Server Address box type or paste in <https://vpn.dotcomm.org>, then click “General” and make sure the “Show Citrix Gateway status in the menu bar” is checked on



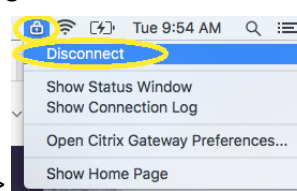
- Your Mac should now be connected to the DOTComm VPN with access to enterprise resources

<<< DISCONNECTING FROM THE VPN >>>

- When finished using the VPN click “Log Off” from the portal page in Safari or “Disconnect” from the padlock menu icon

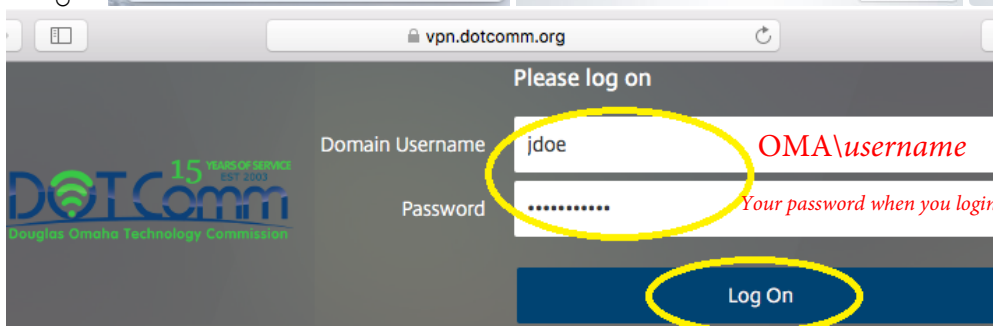
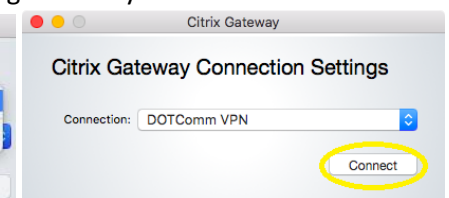
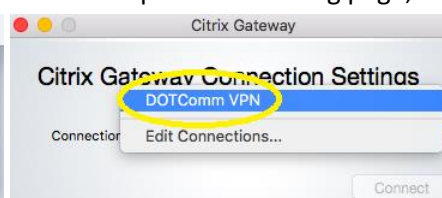
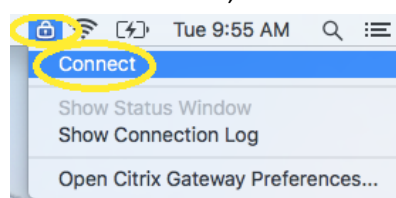


<-Portal OR Plugin->



<<< RECONNECTING TO THE VPN >>>

- Open Safari and browse to the site <https://vpn.dotcomm.org>, Log on with your domain username and password **OR**
- Click the Citrix Gateway padlock on the dock, click “Connect”; Click the “Connection” menu and click your connection; Click the “Connect” button; Safari should launch the vpn.dotcomm.org page; Log on with your domain credentials



- Don't forget to disconnect the VPN when finished
- Please note these instructions are based off macOS High Sierra 10.13.6 and may look different on newer macOS versions