

[bristolparksplan2020.com](http://bristolparksplan2020.com)



# Parks, Recreation, Youth and Community Services Master Plan

October 28, 2020

**ACTIVITAS**  
landscape architecture | civil engineering

**pros**  
consulting  
NC

# Ground Rules

---

- ❖ Please submit your questions via the Q&A function or chat directly with us via the chat function during the presentation.
- ❖ We will be monitoring the Q&A function the most, but all comments in the chat pod will be recorded.
- ❖ If connectivity is an issue, don't worry – please continue to log back in!

# Meeting Series Progression

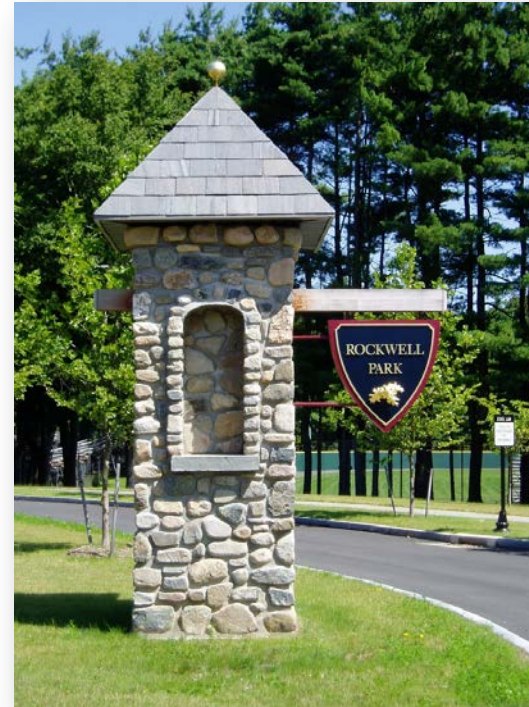
---

- ❖ **Two weeks ago:** public engagement and needs assessment findings presented to Youth Commission
- ❖ **Last week:** site analyses and capital improvement planning (CIP) presented to Board of Park Commissioners
- ❖ **Tonight:** public presentation

# Agenda

- ❖ Plan Purpose
- ❖ Baseline Understanding
- ❖ Needs Assessment
- ❖ Recommendations
- ❖ Page Park Master Plan
- ❖ Q&A

[bristolparksplan2020.com](http://bristolparksplan2020.com)





# Plan Purpose

---

**Create a Compelling Vision and Direction for Parks, Recreation, Youth and Community Services**



**Determine the Right Path to Follow**



# What is Included in a Master Plan?

---

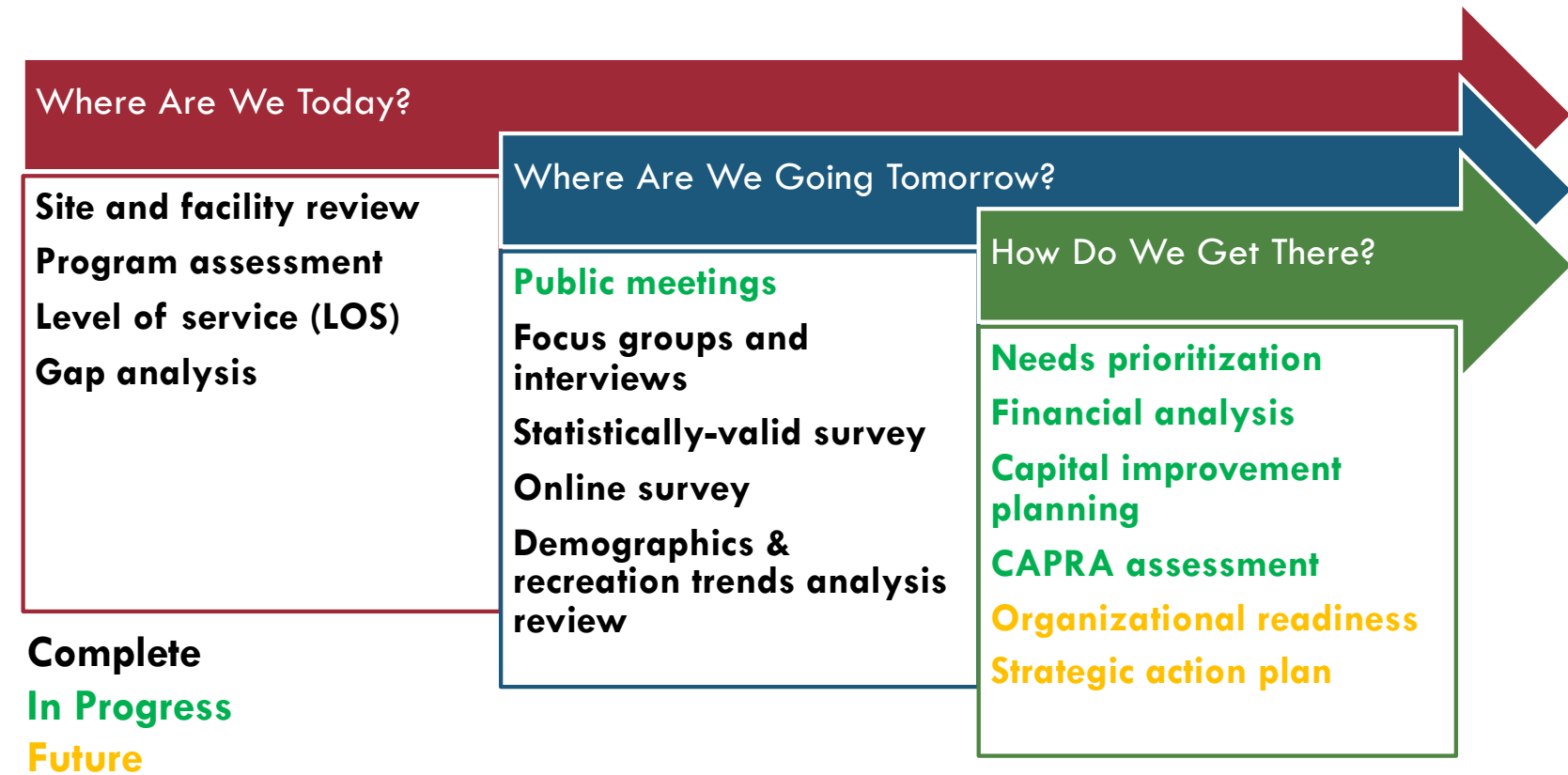
- ❖ Parks, open space, trails, facilities, programs, services, and experiences
- ❖ A road map to guide future decisions regarding park sites and recreation programs/services (***finances, organization alignment, needs prioritization, action plan, etc.***)



# The Process

---

# Master Plan





# Baseline Understanding

---

WHERE ARE WE TODAY?

# Site and Facility Review

---

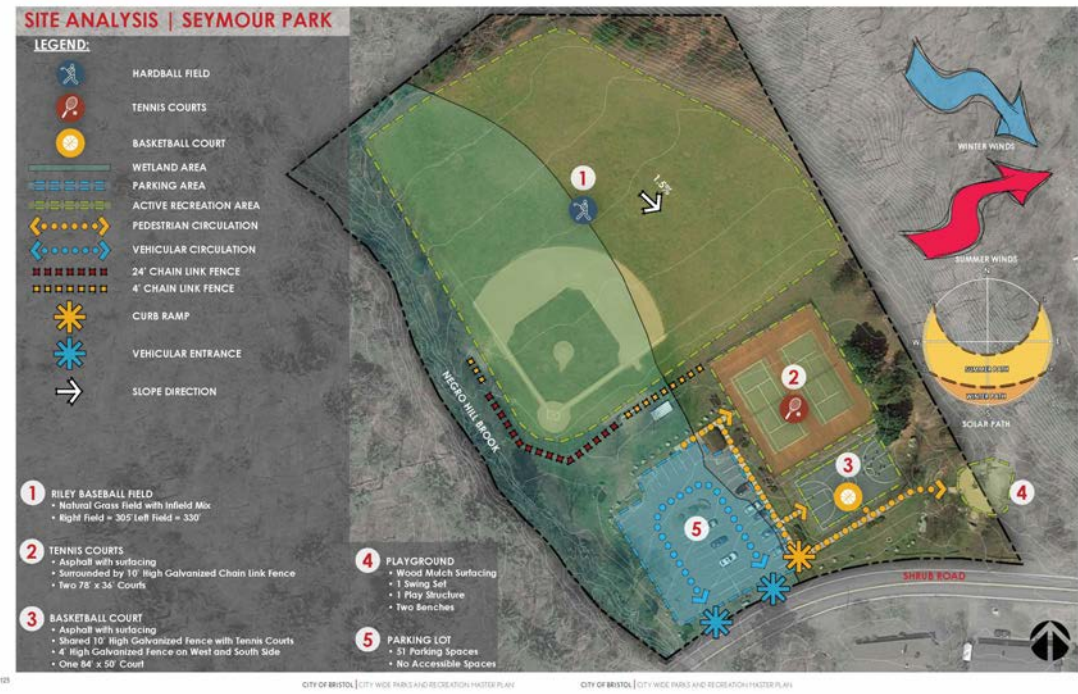
❖ Reviewed all of the City's Parks and Recreation Facilities

Page Park	Bracket Park	Casey Field*
Federal Hill	Fraser Field*	Kern Park
Muzzy Field	Nelson's Field	Memorial Boulevard
Peck Park*	Pine Lake*	Quinlan Park
Rockwell Park	Seymour Park	Stocks Playground
Mix Street Field	Wilson Playground	

\*Fields are leased and not used by Bristol PRYCS

# Site Analysis Information

- ❖ Resource Areas
- ❖ Vehicular/Pedestrian Circulation
- ❖ Access Points
- ❖ Parking
- ❖ Athletic Fields and Courts
- ❖ Walking and Hiking Trails
- ❖ Existing Topography
- ❖ Handicap Accessibility



# Site Analysis Information

- ❖ Resource Areas
- ❖ Vehicular/Pedestrian Circulation
- ❖ Access Points
- ❖ Parking
- ❖ Athletic Fields and Courts
- ❖ Walking and Hiking Trails
- ❖ Existing Topography
- ❖ Handicap Accessibility





# Site Analysis Information

- ❖ Resource Areas
- ❖ Vehicular/Pedestrian Circulation
- ❖ Access Points
- ❖ Parking
- ❖ Athletic Fields and Courts
- ❖ Walking and Hiking Trails
- ❖ Existing Topography
- ❖ Handicap Accessibility



# Existing Conditions

---

- ❖ **Basketball Courts**
- ❖ Tennis Courts
- ❖ Existing Bleachers
- ❖ Playground Mulch
- ❖ Field Conditions
- ❖ Fencing
- ❖ Handicap Accessibility



# Existing Conditions

---

- ❖ Basketball Courts
- ❖ **Tennis Courts**
- ❖ Existing Bleachers
- ❖ Playground Mulch
- ❖ Field Conditions
- ❖ Fencing
- ❖ Handicap Accessibility



# Existing Conditions

---

- ❖ Basketball Courts
- ❖ Tennis Courts
- ❖ **Existing Bleachers**
- ❖ Playground Mulch
- ❖ Field Conditions
- ❖ Fencing
- ❖ Handicap Accessibility





# Existing Conditions

---

- ❖ Basketball Courts
- ❖ Tennis Courts
- ❖ Existing Bleachers
- ❖ **Playground Mulch**
- ❖ Field Conditions
- ❖ Fencing
- ❖ Handicap Accessibility



# Existing Conditions

---

- ❖ Basketball Courts
- ❖ Tennis Courts
- ❖ Existing Bleachers
- ❖ Playground Mulch
- ❖ **Field Conditions**
- ❖ Fencing
- ❖ Handicap Accessibility



# Existing Conditions

---

- ❖ Basketball Courts
- ❖ Tennis Courts
- ❖ Existing Bleachers
- ❖ Playground Mulch
- ❖ Field Conditions
- ❖ **Fencing - Condition**
- ❖ Handicap Accessibility





# Existing Conditions

---

- ❖ Basketball Courts
- ❖ Tennis Courts
- ❖ Existing Bleachers
- ❖ Playground Mulch
- ❖ Field Conditions
- ❖ **Fencing - Height**
- ❖ Handicap Accessibility





# Existing Conditions

---

- ❖ Basketball Courts
- ❖ Tennis Courts
- ❖ Existing Bleachers
- ❖ Playground Mulch
- ❖ Field Conditions
- ❖ Fencing
- ❖ **Handicap Accessibility –  
Curb Ramps**



# Existing Conditions

---

- ❖ Basketball Courts
- ❖ Tennis Courts
- ❖ Existing Bleachers
- ❖ Playground Mulch
- ❖ Field Conditions
- ❖ Fencing
- ❖ **Handicap Accessibility –  
Parking**



# Existing Conditions

---

- ❖ Basketball Courts
- ❖ Tennis Courts
- ❖ Existing Bleachers
- ❖ Playground Mulch
- ❖ Field Conditions
- ❖ Fencing
- ❖ **Handicap Accessibility –  
Flush Access**





# Existing Conditions

- ❖ Basketball Courts
- ❖ Tennis Courts
- ❖ Existing Bleachers
- ❖ Playground Mulch
- ❖ Field Conditions
- ❖ Fencing
- ❖ **Handicap Accessibility –  
No Accessible Routes**





# Level of Service (LOS)

❖ A level of service (LOS) analysis looks at population-based service standards by park acreage, trails, major outdoor amenities, and indoor recreation space.

❖ Deficits exist for:

- Basketball courts
- Paved trails
- Indoor recreation square footage
- Playgrounds
- Neighborhood park acreage
- Sand volleyball
- Park shelters/pavilions
- Youth diamond fields

Park Type	Bristol Inventory	Bristol Board of Education	Bristol Inventory	Current Bristol Service Level Based Upon Population			NRPA / BEST PRACTICE			Bristol Difference	NEEDS ASSESSMENT PRIORITY	Recommended Bristol Service Levels; Revised		Meet Standard/ Need Exists	Additional Facilities/ Amenities Needed		
				1.00	court per	2,004	1.00	court per	5,000			1.00	court per		3,500	-	Court(s)
Tennis	19.00	11.00	30.00	1.00	court per	2,004	1.00	court per	5,000	18	Low	1.00	court per	3,500	Meets Standard	-	Court(s)

# Programs and Services

## ❖ Core programs offered

- Adult programs
- Adventure education
- Aquatics
- Day camps
- Preschool programs
- Special events
- Teen programs
- Youth development
- Youth programs

Program Lifecycle Analysis				
Lifecycle Stage	Description	Actual Program Distribution		Recommended Distribution
Introduction	New program; modest participation	20%	52% total	50-60% total
Take-Off	Rapid participation growth	17%		
Growth	Moderate, but consistent participation growth	15%		
Mature	Slow participation growth	17%	17%	40%
Saturation	Minimal to no participation growth; extreme competition	21%	32% total	0-10% total
Decline	Declining participation	11%		

Core Program Area	Preschool (5 and Under)	Elementary (6-12)	Teens (13-17)	Adult (35-54)	Adult (55-74)	Adult (75+)	All Ages Programs
Special Events							P
Day Camps	S	P	S				
Preschool Programs	P						
Youth Programs	S	P	S				
Teen Programs		S	P				
Adult Programs				P	P	S	
Aquatics Programs							P
Adventure Education		P	S	P	S		
Youth Development Programs		P	P	S			

# Needs Assessment

---

WHERE ARE WE GOING TOMORROW?

# Interviews and Focus Groups

---

## ❖ Strengths:

- There is a lot to like about the park system
- Staff leadership is an asset
- Marketing practices used

## ❖ Challenges:

- A unified direction
- Park design and layout
- Indoor recreation space
- Competition among recreation providers
- Formal planning process for Page Park
- Overall field space allocation

## ❖ Key focus areas:

- Partnerships will be important for adding more opportunities
- Sustainable growth
- Emphasize community services throughout the entire Department
- Continued investment in people along with infrastructure

## The process included:

- ✓ Youth Commission
- ✓ Board of Park Commissioners
- ✓ Chamber of Commerce
- ✓ Economic and Development Department
- ✓ Board of Education
- ✓ Public Works
- ✓ Youth and Community Services
- ✓ Kern Park Committee
- ✓ Pine Lake Adventure Park Staff
- ✓ Current user groups



# Testing Themes with the Community

---

- ❖ Conducted by ETC Institute
- ❖ Mailed to random sample of households
- ❖ Goal: 385 / Completed: 410
- ❖ SurveyMonkey
  - Open access survey
  - 196 responses



# Major Surveying Findings

---

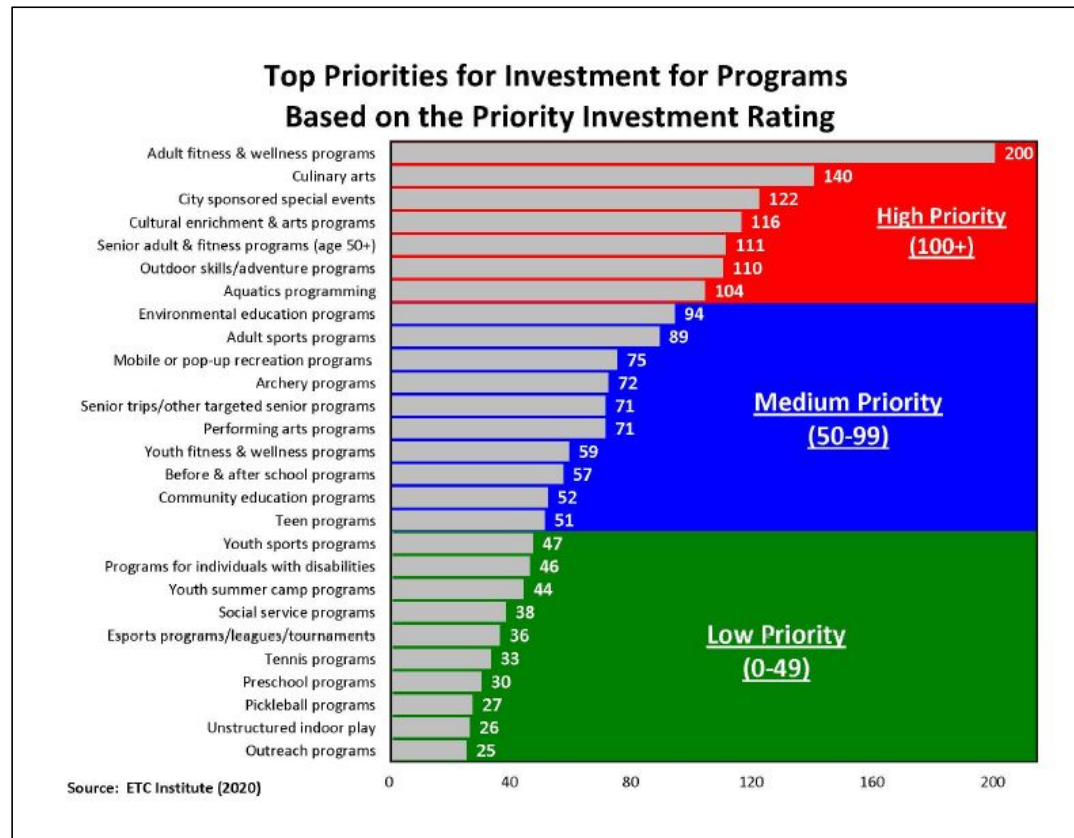
- ❖ Over half (51%) of residents are either very satisfied (14%) or satisfied (37%) with the overall value they receive from the Department.
- ❖ Residents believe the Department contributes the most to: making living in Bristol fun (72%), preserving and protecting the natural environment (71%), and enhancing community connection to each other (71%).
- ❖ Residents believe the Department should focus on: maintenance of parks/facilities (39%), availability of information about programs and facilities (30%), and connectivity of trails and pathways (28%).

# Major Surveying Findings Continued

---

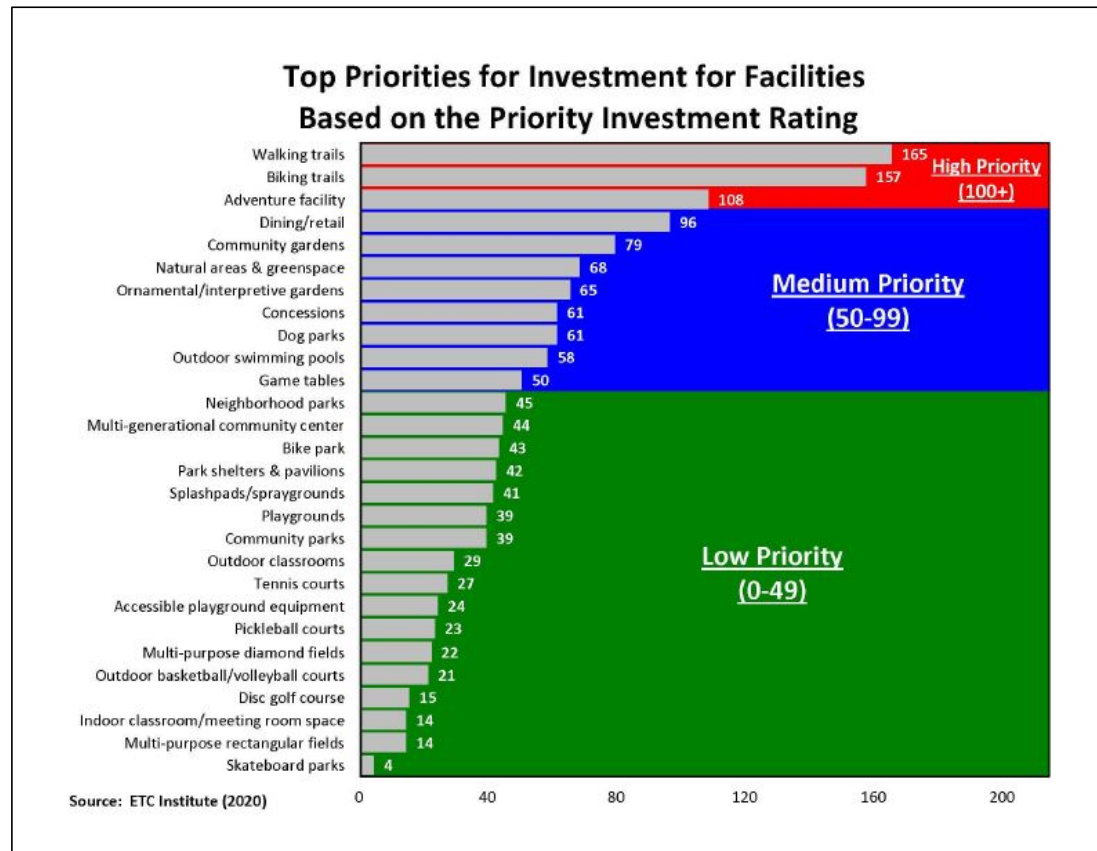
- ❖ Page Park should be renovated/updated along with increased walkability and parking.
- ❖ Chippers Hill Dog Park should be maintained as a passive park with enhanced open space, pathways, and trails.
- ❖ The top barriers to participating more in programs, services, and park usage are: not knowing what is being offered (36%), being too busy (26%), and lack of restrooms (18%).
- ❖ Over half (65%) indicate they at least somewhat agree that they feel welcomed, respected, and safe in the City.

# Priority Investment Rating (PIR) – Programs





# Priority Investment Rating (PIR) – Facilities



# Pulling It All Together

---

HOW DO WE GET THERE?

# Framework

---

## ❖ Three-tiered approach

### *Understanding Cost “Buckets”*



# Capital Improvement - Critical Themes

---

- ❖ Core program area planning
- ❖ Develop partnership policies
- ❖ Increase access to public facilities
- ❖ ADA Improvements
- ❖ Operations and maintenance planning
- ❖ Staff training and professional development budget



# Capital Improvement - Sustainable Themes

---

- ❖ Program development and marketing plan by core program area
- ❖ Introduction of dynamic pricing
- ❖ Formalizing volunteer process
- ❖ Pine Lake investment
- ❖ Funding and revenue strategy diversification
- ❖ Continue to build on marketing and branding to increase public awareness

# Capital Improvement - Visionary Themes

---

- ❖ Long-term development of an “active adults” core program area
- ❖ Formulation of a foundation specific to the department
- ❖ Site master plans and facility development/re-development
- ❖ Trails and pathways
- ❖ Indoor recreation space
- ❖ Walking path exercise signage
- ❖ CAPRA accreditation

# Capital Improvement - Critical Infrastructure

---

- ❖ Renovate and/or add new basketball courts
- ❖ Add permanent pickleball courts
- ❖ Add mulch to playgrounds
- ❖ Renovate/replace bleachers
- ❖ Handicap accessible improvements
- ❖ Raise team area fencing and concrete at team areas
- ❖ Take over maintenance of Board of Education athletic facilities

# Capital Improvement - Sustainable Infrastructure

---

- ❖ Expand paved trails
- ❖ Fencing improvements
- ❖ Continual field maintenance
- ❖ Develop more volleyball pits, playgrounds and park shelters/pavilions
- ❖ Provide sports lighting for basketball courts
- ❖ Field use analysis study to determine field space needs

# Capital Improvement - Visionary Infrastructure

---

- ❖ New indoor recreation building
- ❖ Develop more neighborhood park acreage
- ❖ Community gardens
- ❖ Ornamental/interpretative gardens
- ❖ Outdoor game tables
- ❖ Implement Page Park Master Plan Improvements (phased)



# Pulling It All Together

---

PAGE PARK MASTER PLAN EXAMPLE

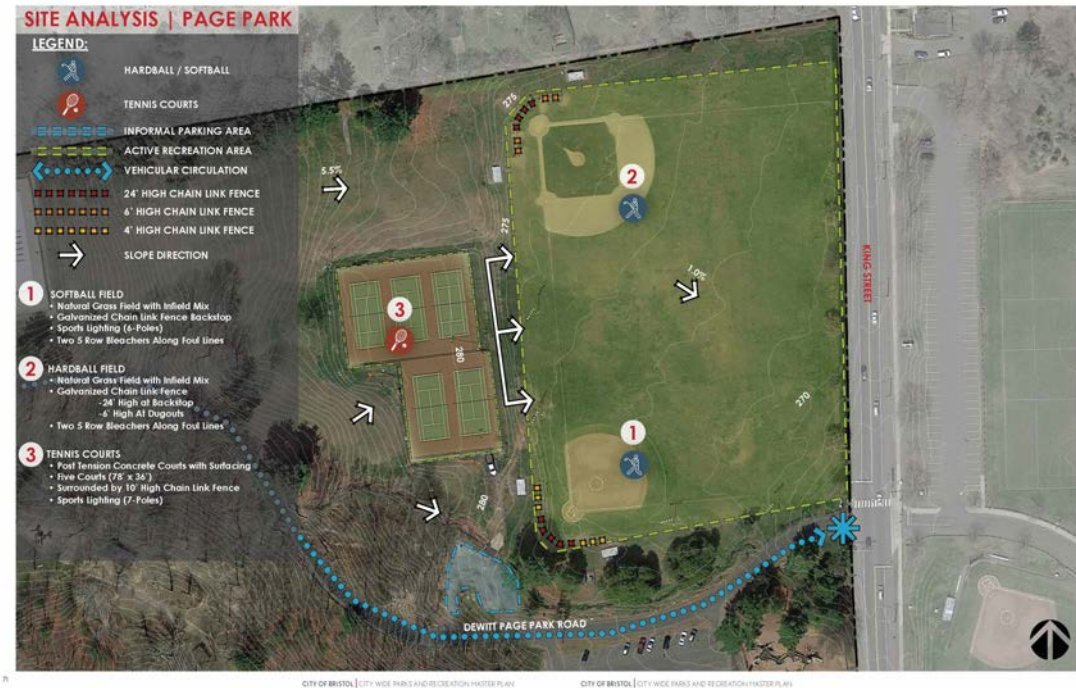
# Page Park – What Works Well

- ❖ Playground
- ❖ Outdoor Pool
- ❖ Tennis Courts
- ❖ Basketball Court
- ❖ Disc Golf Course



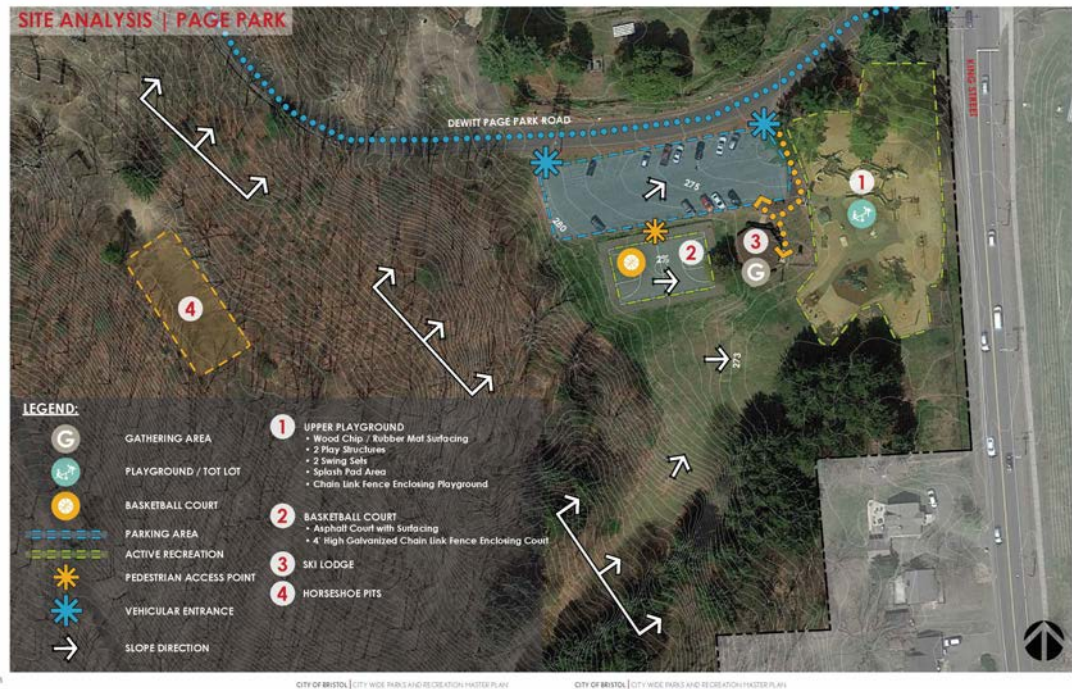
# Page Park – What Doesn't Work Well

- ❖ Pedestrian circulation through park
- ❖ Lack of ADA access and connectivity through the park
- ❖ Lack of parking
- ❖ No separation of vehicular and pedestrian circulation (is dangerous)
- ❖ Baseball and softball fields are not fenced and can not be used simultaneously



# Page Park – What Works Well

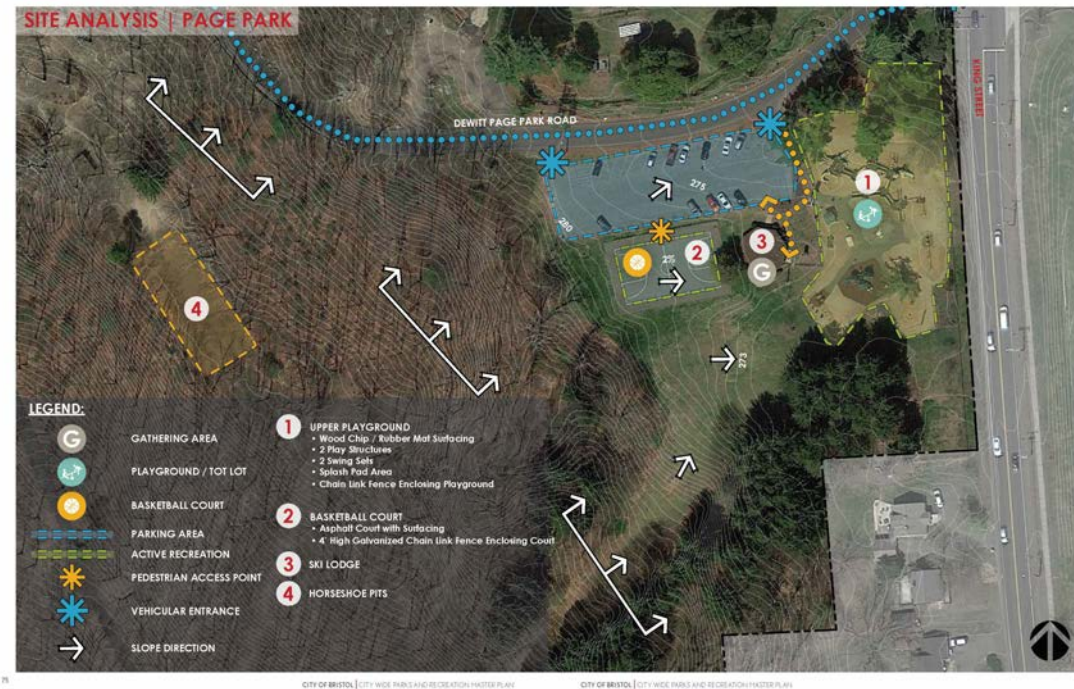
- ❖ Build/improve walking trails
- ❖ Athletic and site lighting
- ❖ ADA accessibility and improved walkability
- ❖ Utilize and renovate existing buildings for more programming
- ❖ Renovate baseball/softball field for simultaneous use





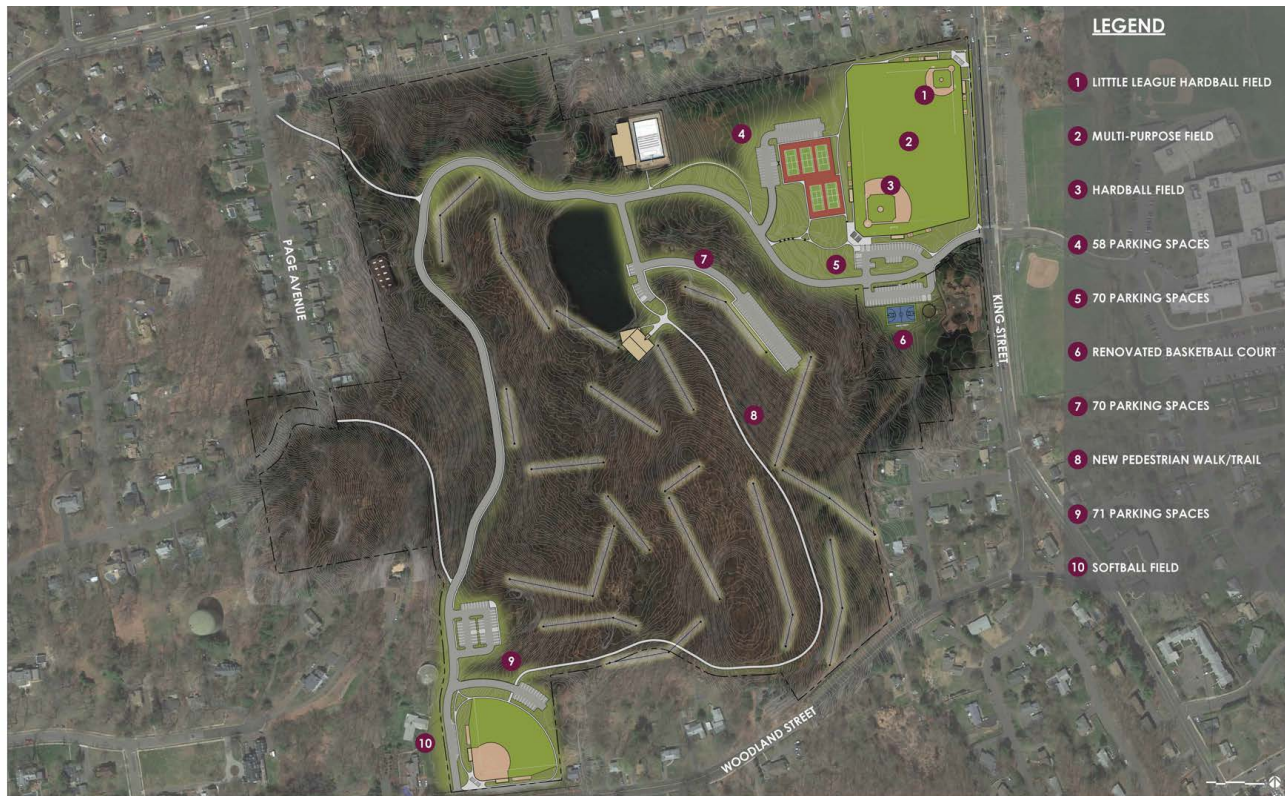
# Page Park – What Can Be Improved Upon

- ❖ Build/improve walking trails
- ❖ Athletic and site lighting
- ❖ ADA accessibility and improved walkability
- ❖ Utilize and renovate existing buildings for more programming
- ❖ Renovate baseball/softball field for simultaneous use





# Page Park – DRAFT Master Plan



# Page Park – DRAFT Master Plan





# Page Park – DRAFT Master Plan

---





# Next Steps

---

# To Be Completed...

---

- ❖ Level of Service (LOS) refinement
- ❖ Funding and revenue strategy refinement
- ❖ Operations and maintenance planning
- ❖ Action plan development
- ❖ Vision and mission check-in



# Q&A

---

- ❖ Use the Q&A pod, OR
- ❖ Click on the “Raise Hand” icon and we will recognize you so you can ask your question over the air.

A hand is holding a white sign with the word "QUESTIONS?" written in large, bold, blue capital letters. The sign is set against a dark blue background that looks like a screen or a board. The hand is visible at the bottom of the sign, holding it from underneath.