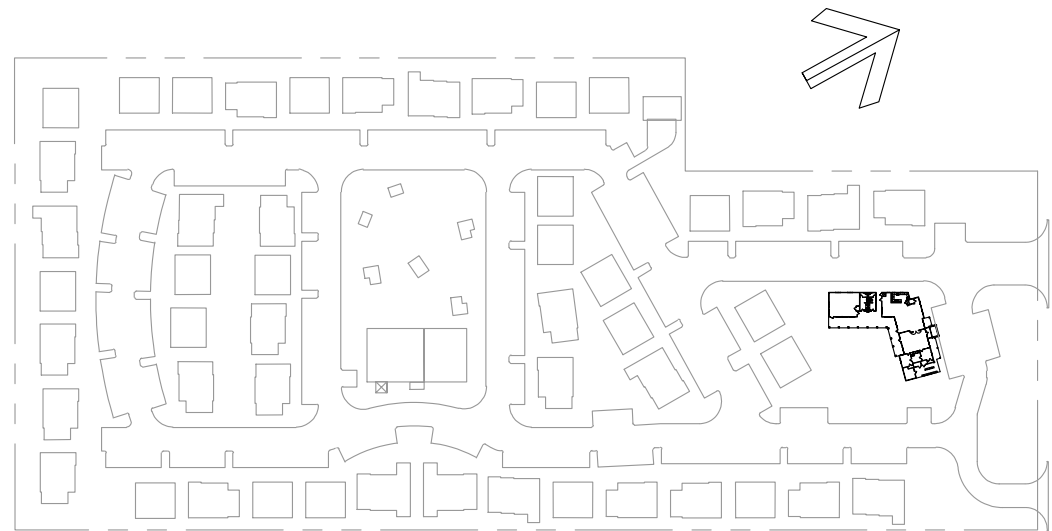


TIMBERGATE TOWNHOMES

VICINITY MAP (NTS)



PLAN VIEW

SCALE: 1/16" = 1'-0"

QTY: F - 4

G - 7 Ga - 1

H - 3 Ha - 1

J - 2 K - 1 L - 3 M - 1 Ma - 2 N - 1

CD1A - 1 CD1L - 3 CD1R - 1

ARCH REF: 1/A2.5 2/A2.5 1/A7.1

01

CLUBHOUSE FLOOR PLAN

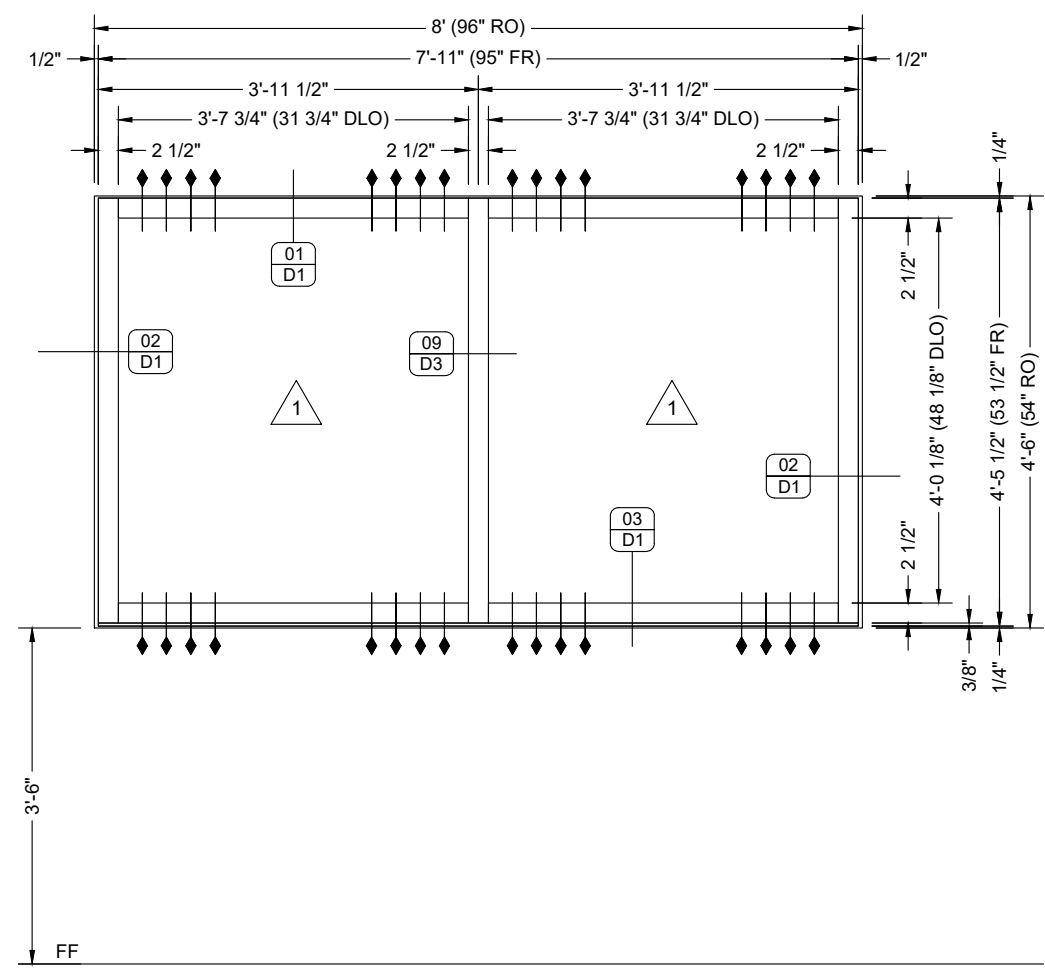
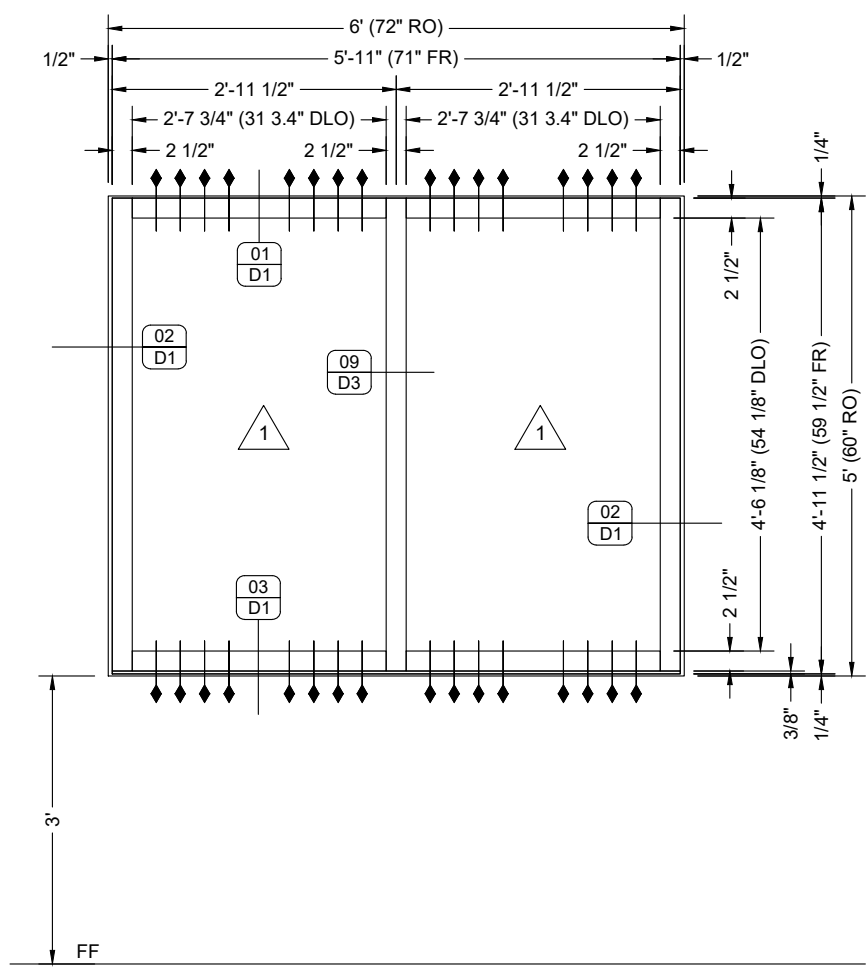
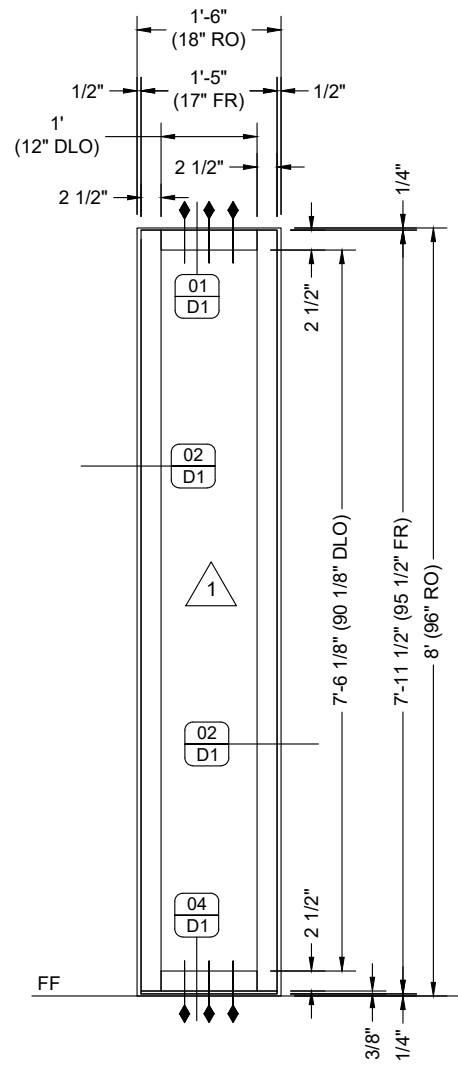
OLDCASTLE FG-5100T EXTERIOR STOREFRONT
 OLDCASTLE FG-2000 INTERIOR STOREFRONT
 OLDCASTLE WSD-500 WIDE STILE DOORS

DATE	BY	DESCRIPTION
09/15/21	fp	First Submittal
1	SUB	

SIX FLAGS GLASS
 108 E AIRLINE RD VICTORIA, TX 77901
 (W) 361-573-9612 (F) 361-573-2334

PROJECT: TIMBERGATE TOWNHOMES
NEW CLUBHOUSE BUILDING
 ARCHITECT: B&A ARCHITECTS, INC.
 (210) 628-1888
 GENERAL CONTRACTOR: CONCEPT BUILDERS
 (210) 828-4420

PROJECT NO.	SFG-2008-03
DRAWN BY	fp
DATE	09/15/21
SCALE	NTS
DRAWING	FLOOR PLANS
SHEET	P1



ELEVATION G EXTERIOR STOREFRONT

QUANTITY: 07
 SCALE: 1/2" = 1'-0"
 ARCH REF: 1/A2.5 2/A2.5 1/A7.1
 OLDCASTLE FG-5100T STORMMAX ALUMINUM STOREFRONT

ELEVATION F EXTERIOR STOREFRONT

QUANTITY: 04
 SCALE: 1/2" = 1'-0"
 ARCH REF: 1/A2.5 2/A2.5 1/A7.1
 OLDCASTLE FG-5100T STORMMAX ALUMINUM STOREFRONT

ELEVATION Ga EXTERIOR STOREFRONT

QUANTITY: 01
 SCALE: 1/2" = 1'-0"
 ARCH REF: 1/A2.5 2/A2.5 1/A7.1
 OLDCASTLE FG-5100T STORMMAX ALUMINUM STOREFRONT

NOTE: BUILDING SUPPORTING SUBSTRATE MUST BE CONSTRUCTED SO THAT IT MEETS TDI REQUIREMENTS.

NO.	DATE	DESCRIPTION
1	09/15/21	First Submittal

SIX FLAGS GLASS
 108 E AIRLINE RD VICTORIA, TX 77901
 (W) 361-573-9612 (F) 361-573-2334

PROJECT: TIMBERGATE TOWNHOMES
NEW CLUBHOUSE BUILDING
 ARCHITECT: B&A ARCHITECTS, INC.
 GENERAL CONTRACTOR: CONCEPT BUILDERS

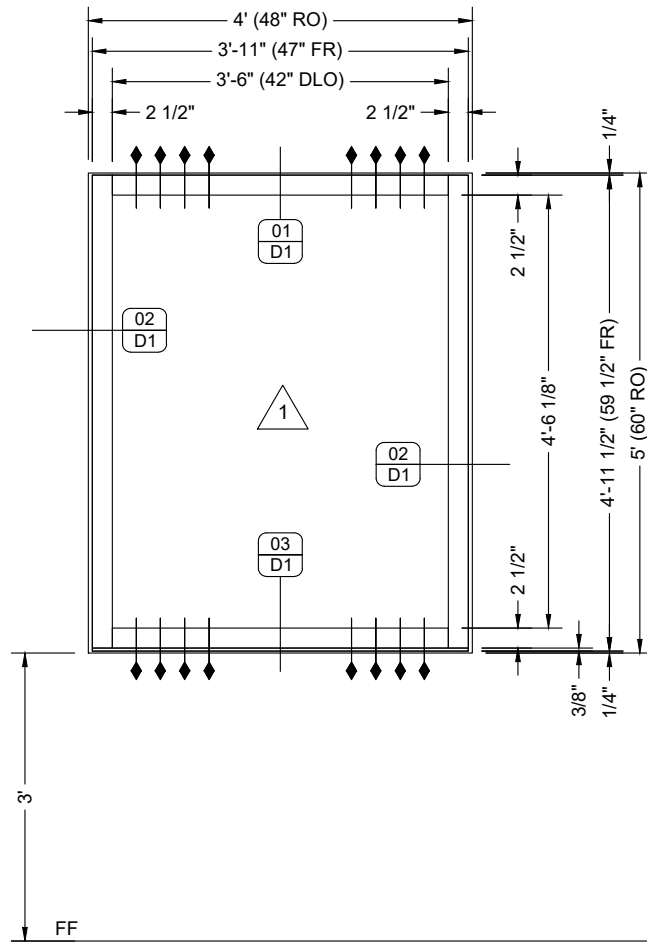
PROJECT NO.	SFG-2008-03
DRAWN BY	fp
DATE	09/15/21
SCALE	1/2" = 1'-0"
DRAWING	ELEVATIONS
SHEET	E1

NO.	DATE	DESCRIPTION
1	09/15/21	First Submittal

SIX FLAGS GLASS
 108 E AIRLINE RD VICTORIA, TX 77901
 (W) 361-573-9612 (F) 361-573-2334

PROJECT: **TIMBERGATE TOWNHOMES**
NEW CLUBHOUSE BUILDING
 ARCHITECT: **B&A ARCHITECTS, INC.**
 (210) 628-1888
 GENERAL CONTRACTOR: **CONCEPT BUILDERS**
 (210) 828-4420

PROJECT NO.	SFG-2008-03
DRAWN BY	fp
DATE	09/15/21
SCALE	1/2" = 1'-0"
DRAWING	ELEVATIONS
SHEET	E2



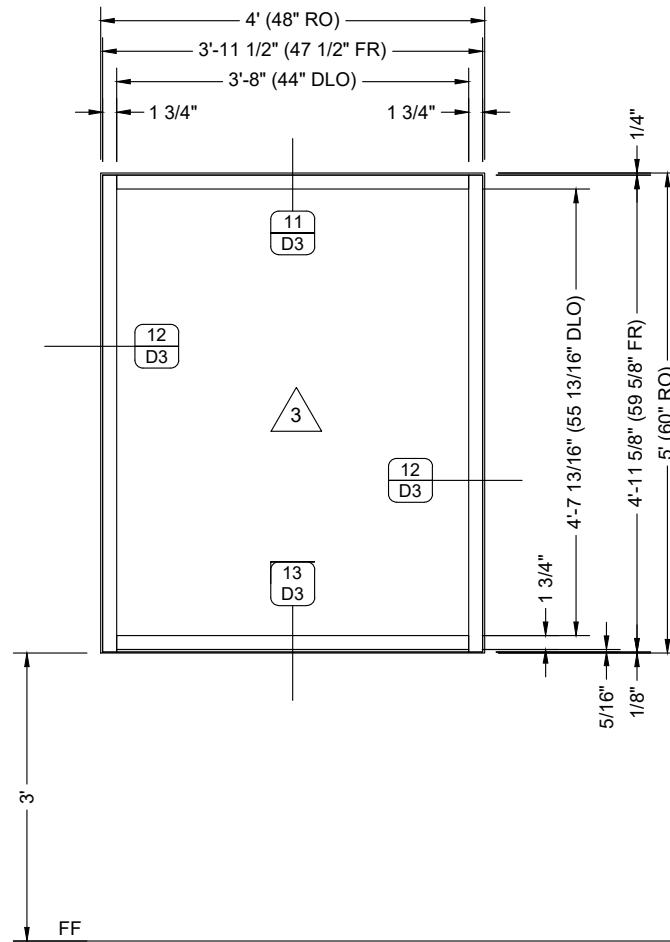
ELEVATION



INTERIOR STOREFRONT

OLDCASTLE FG-2000 ALUMINUM STOREFRONT

QUANTITY: 01
 SCALE: 1/2" = 1'-0"
 ARCH REF: 1/A2.5 2/A2.5 1/A7.1



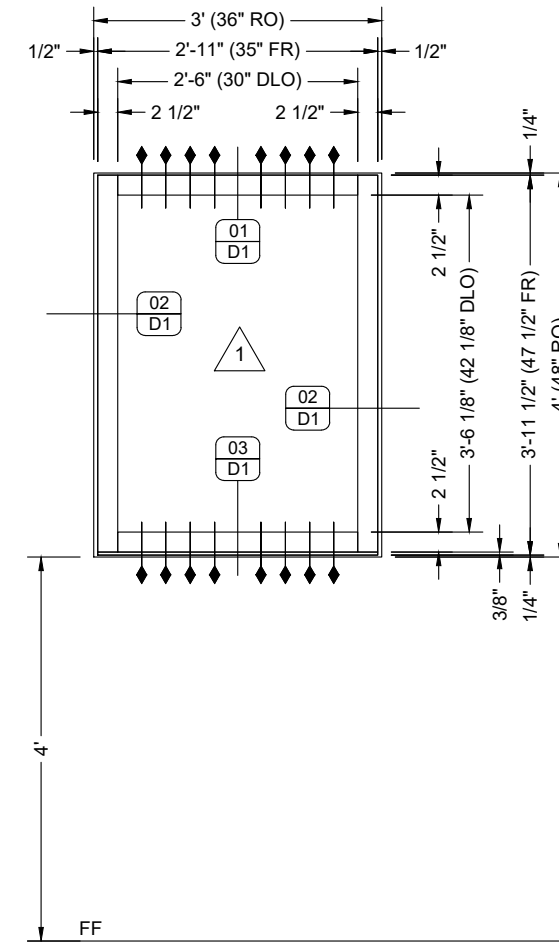
ELEVATION



EXTERIOR STOREFRONT

OLDCASTLE FG-5100T STORMMAX ALUMINUM STOREFRONT

QUANTITY: 02
 SCALE: 1/2" = 1'-0"
 ARCH REF: 1/A2.5 2/A2.5 1/A7.1



ELEVATION

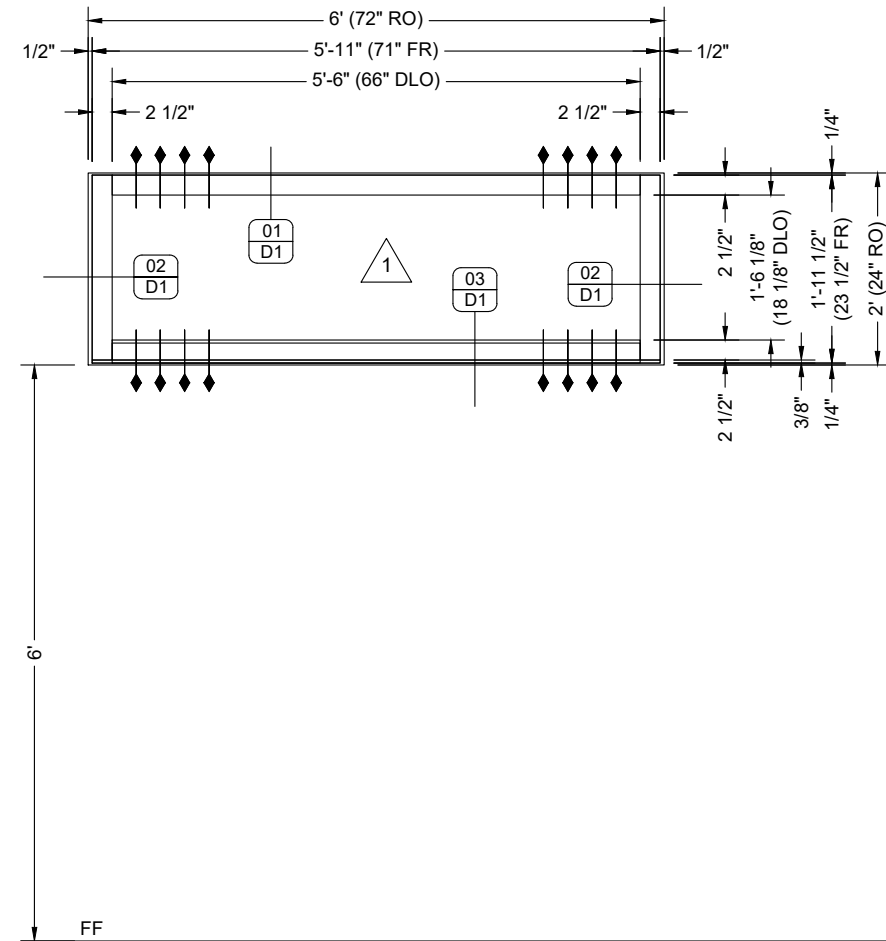
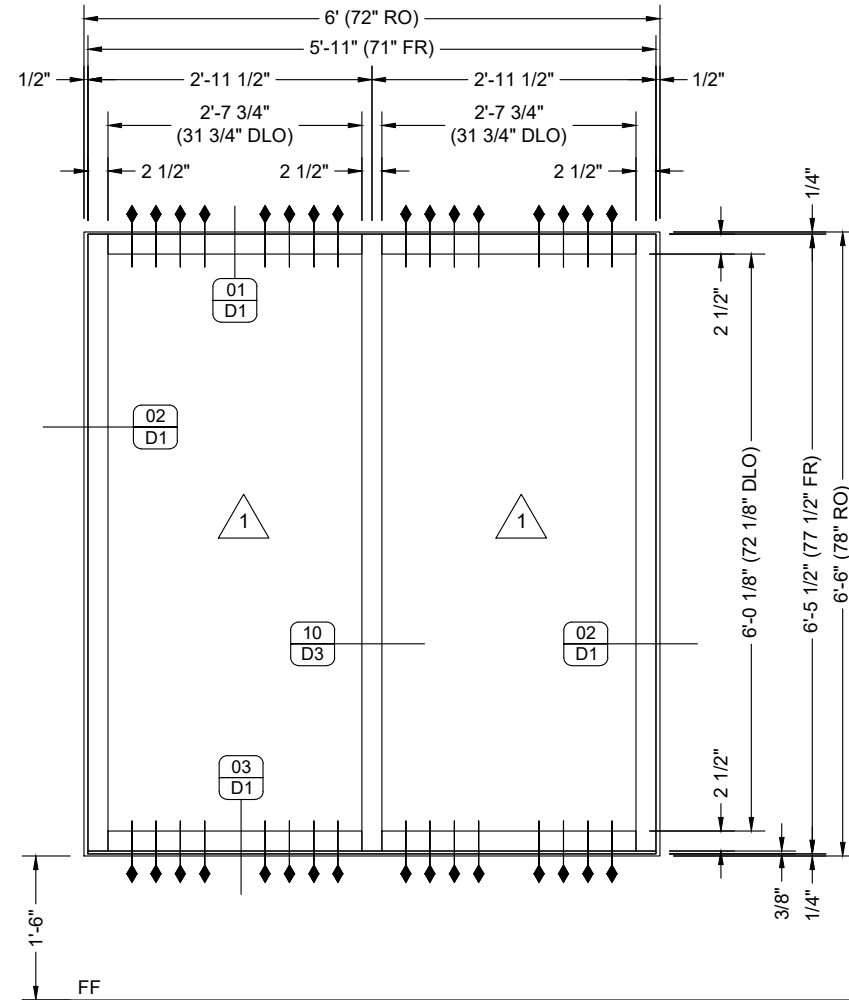
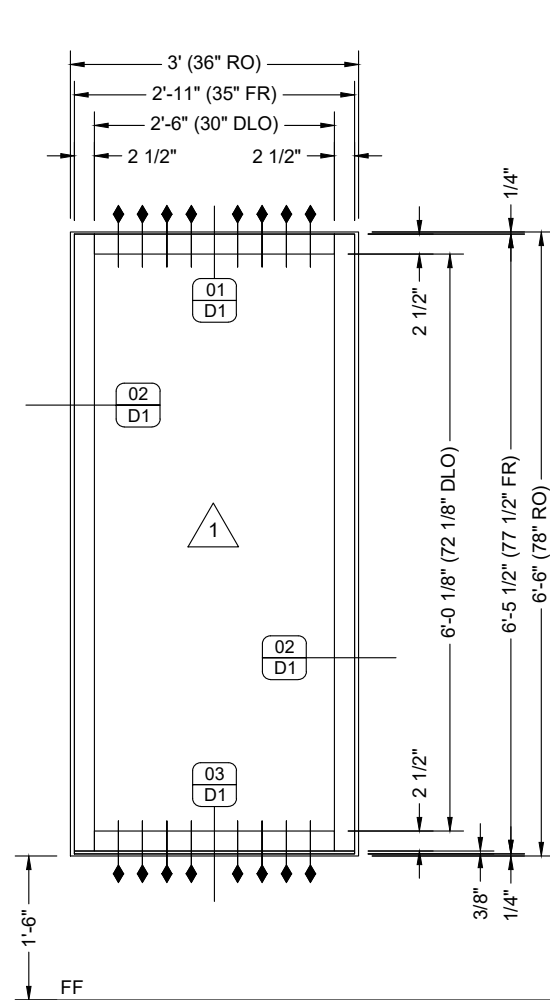


EXTERIOR STOREFRONT

OLDCASTLE FG-5100T STORMMAX ALUMINUM STOREFRONT

QUANTITY: 03
 SCALE: 1/2" = 1'-0"
 ARCH REF: 1/A2.5 2/A2.5 1/A7.1

NOTE: BUILDING SUPPORTING
 SUBSTRATE MUST BE
 CONSTRUCTED SO THAT IT
 MEETS TDI REQUIREMENTS.



ELEVATION **L** **EXTERIOR STOREFRONT**
 OLDCASTLE FG-5100T STORMMAX ALUMINUM STOREFRONT
 QUANTITY: 03
 SCALE: 1/2" = 1'-0"
 ARCH REF: 1/A2.5 2/A2.5 1/A7.1

ELEVATION **K** **EXTERIOR STOREFRONT**
 OLDCASTLE FG-5100T STORMMAX ALUMINUM STOREFRONT
 QUANTITY: 01
 SCALE: 1/2" = 1'-0"
 ARCH REF: 1/A2.5 2/A2.5 1/A7.1

ELEVATION **Ma** **EXTERIOR STOREFRONT**
 OLDCASTLE FG-5100T STORMMAX ALUMINUM STOREFRONT
 QUANTITY: 02
 SCALE: 1/2" = 1'-0"
 ARCH REF: 1/A2.5 2/A2.5 1/A7.1

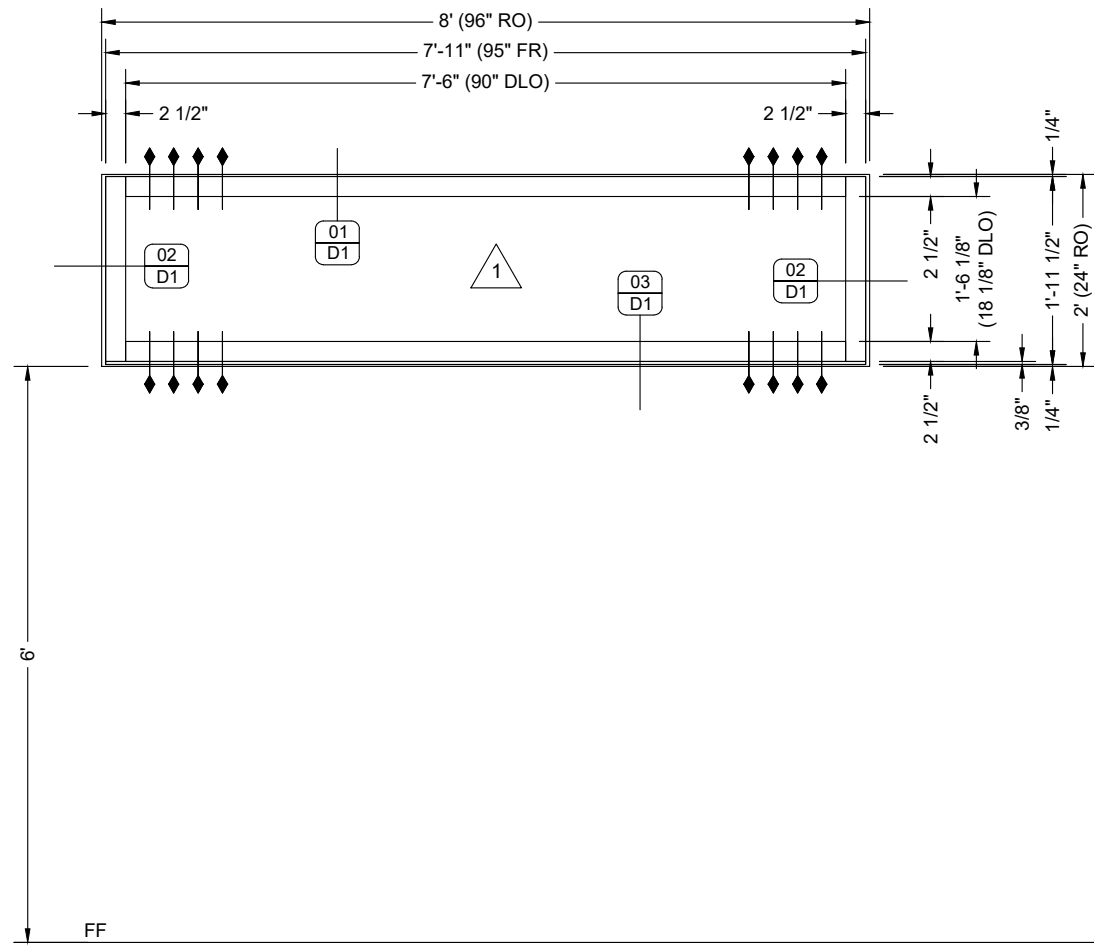
NOTE: BUILDING SUPPORTING SUBSTRATE MUST BE CONSTRUCTED SO THAT IT MEETS TDI REQUIREMENTS.

NO.	DATE	DESCRIPTION
1	09/15/21	First Submittal

SIX FLAGS GLASS
 108 E AIRLINE RD VICTORIA, TX 77901
 (W) 361-573-9612 (F) 361-573-2334

PROJECT: TIMBERGATE TOWNHOMES
NEW CLUBHOUSE BUILDING
 ARCHITECT: B&A ARCHITECTS, INC.
 (210) 628-1888
 GENERAL CONTRACTOR: CONCEPT BUILDERS
 (210) 828-4429

PROJECT NO.	SFG-2008-03
DRAWN BY	fp
DATE	09/15/21
SCALE	1/2" = 1'-0"
DRAWING	ELEVATIONS
SHEET	E3

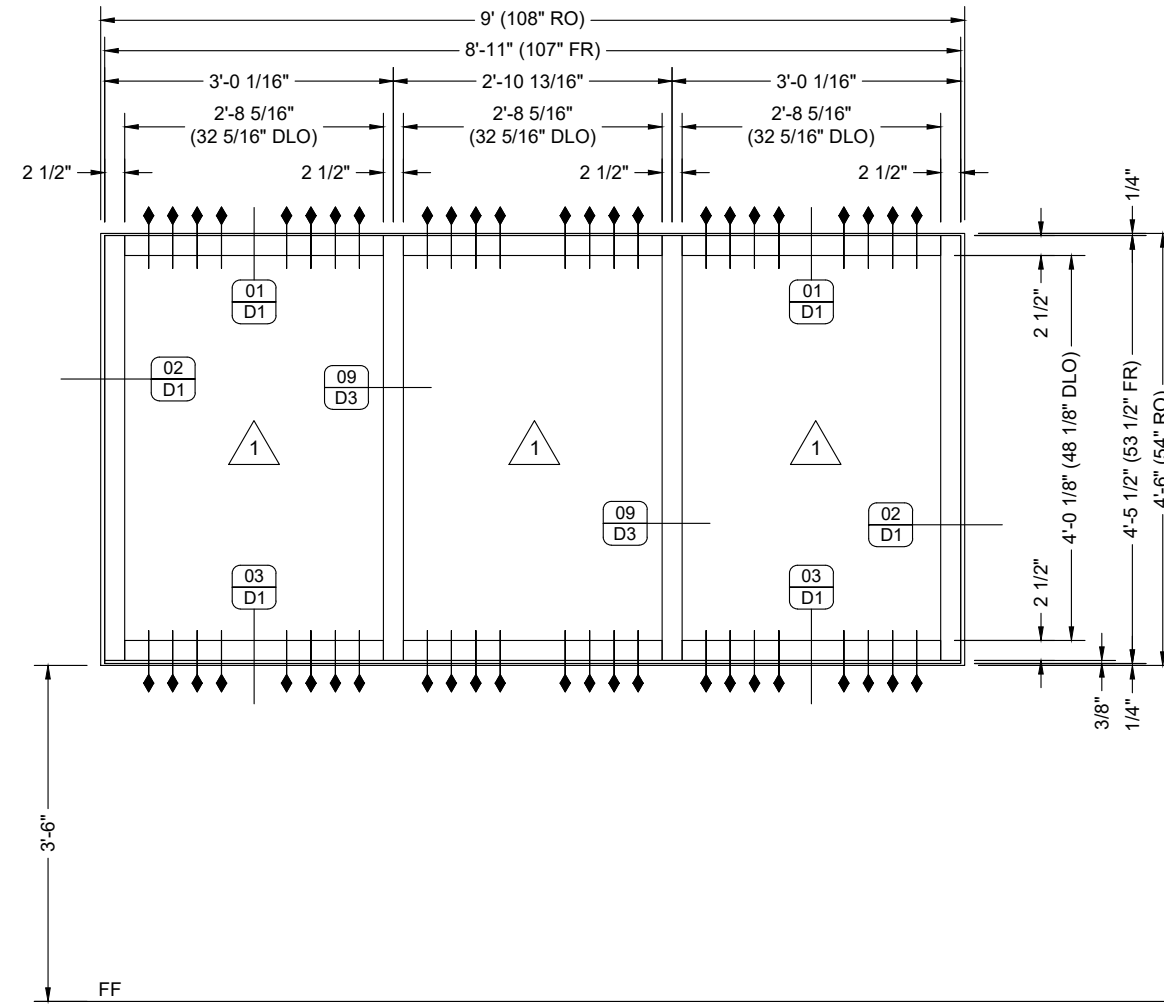


ELEVATION



EXTERIOR STOREFRONT

QUANTITY: 01
 SCALE: 1/2" = 1'-0"
 ARCH REF: 1/A2.5 2/A2.5 1/A7.1
 OLDCASTLE FG-5100T STORMMAX ALUMINUM STOREFRONT



ELEVATION



EXTERIOR STOREFRONT

QUANTITY: 01
 SCALE: 1/2" = 1'-0"
 ARCH REF: 1/A2.5 2/A2.5 1/A7.1
 OLDCASTLE FG-5100T STORMMAX ALUMINUM STOREFRONT

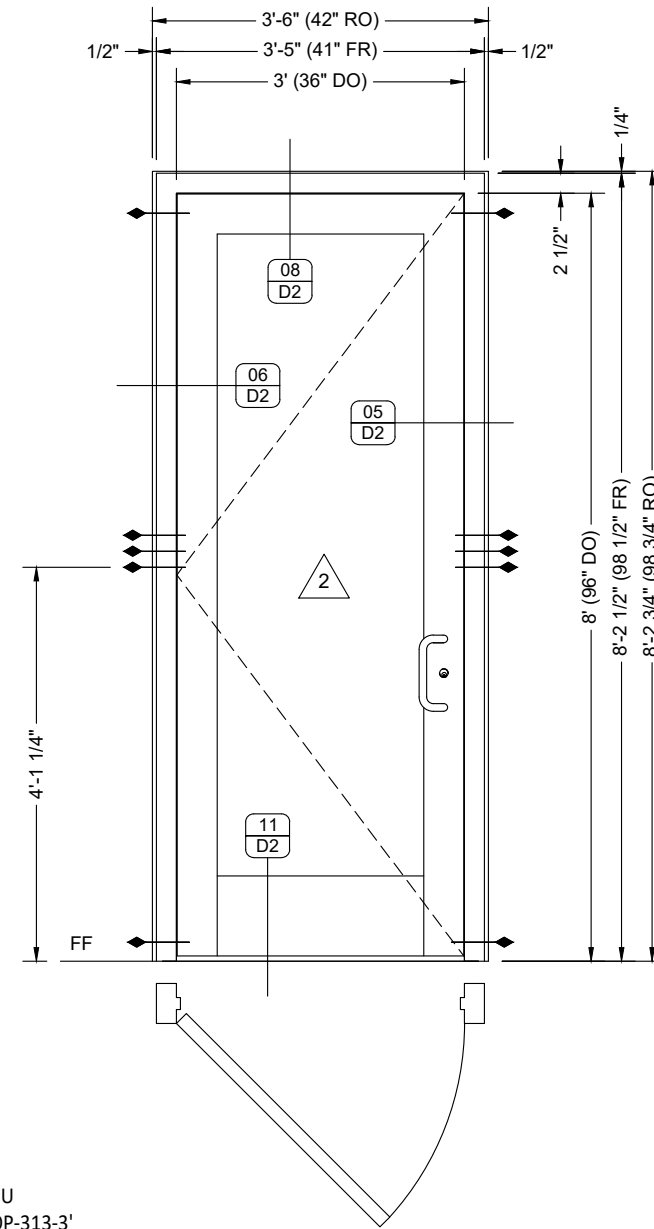
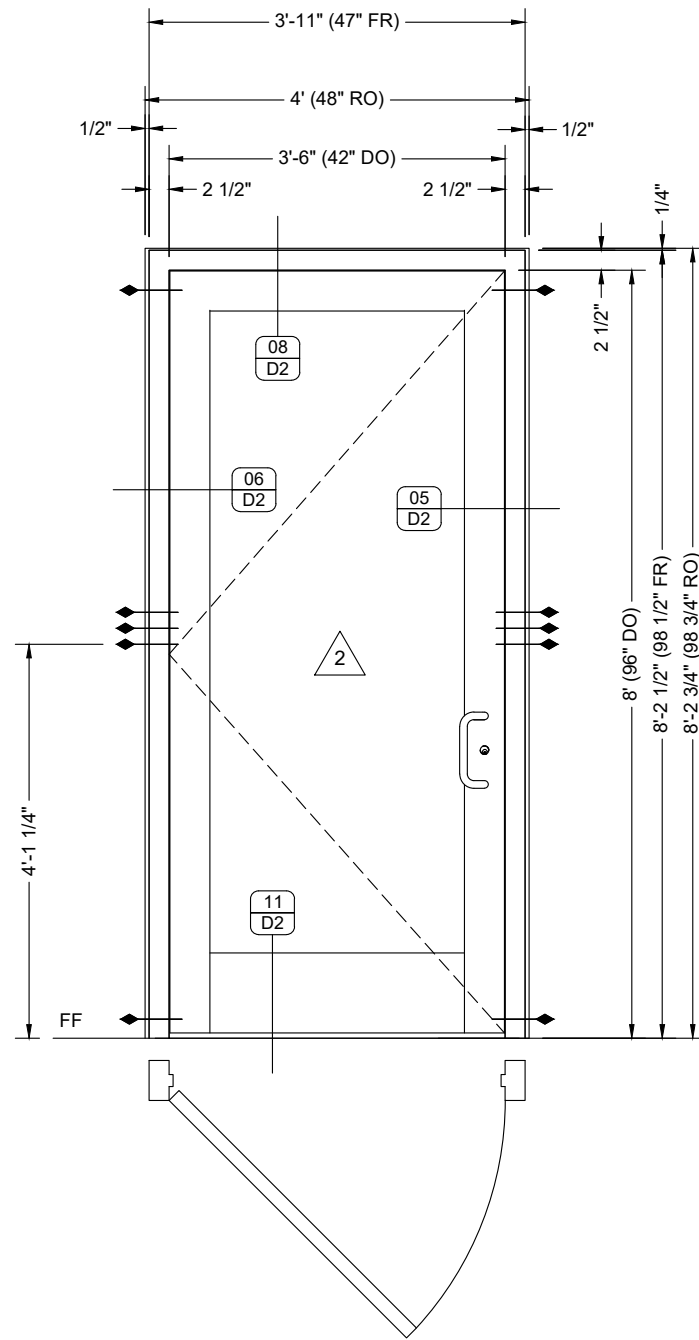
NOTE: BUILDING SUPPORTING SUBSTRATE MUST BE CONSTRUCTED SO THAT IT MEETS TDI REQUIREMENTS.

SIX FLAGS GLASS
 108 E AIRLINE RD VICTORIA, TX 77901
 (W) 361-573-9612 (F) 361-573-2334

PROJECT: **TIMBERGATE TOWNHOMES**
NEW CLUBHOUSE BUILDING
 ARCHITECT: **B&A ARCHITECTS, INC.**
 (210) 625-7888
 GENERAL CONTRACTOR: **CONCEPT BUILDERS**
 (210) 828-4420

PROJECT NO.		SFG-2008-03
DRAWN BY	DATE	
fp	09/15/21	
SCALE		1/2" = 1'-0"
DRAWING		ELEVATIONS
SHEET		E4

NO.	DATE	DESCRIPTION
1	09/15/21	First Submittal



DOOR HARDWARE
DOOR NUMBERS: CD1A, CD1R

- | | | | |
|--|--------------|-----------|-------------------|
| 2 International Model 5000-TP Drop Plate | 1/Door Leaf | Bronze | 5007-DU |
| 2 International Model 5001-TP-DU Closure | 1/Door Leaf | Bronze | 5001-TP-DU |
| 2 Von Duprin CVR Panic Device | 1/Door Leaf | Bronze | 9947-NL-OP-313-3' |
| 2 CY- 1 5/32" Dia Rim Cyl, Schlage 20-022 Panic Ext Trim | 1/Door Leaf | Bronze | 199 |
| 2 Oldcastle PH-21 Standard Panic Pull | 1/Door Leaf | Champagne | 12369 |
| 2 Roton 780-223HD x 95" Gear Inset Hinge w/Screws | 1/Door Leaf | Bronze | 780-224HDx95 |
| 2 D-118/D-120 Weatherstrip Sweep | 1/Door Leaf | Bronze | 3346 |
| 2 TH-57M Standard Threshold | 1/Door Frame | Mill | TH57M |

ELEVATION CD1A **EXTERIOR ENTRANCE**
 QUANTITY: 01
 SCALE: 1/2" = 1'-0"
 ARCH REF: 1/A2.5 2/A2.5 1/A7.1
 OLDCASTLE WSD-500 ENTRANCE ON FG-5100 FRAMING

ELEVATION CD1R **EXTERIOR ENTRANCE**
 QUANTITY: 01
 SCALE: 1/2" = 1'-0"
 ARCH REF: 1/A2.5 2/A2.5 1/A7.1
 OLDCASTLE WSD-500 ENTRANCE ON FG-5100 FRAMING

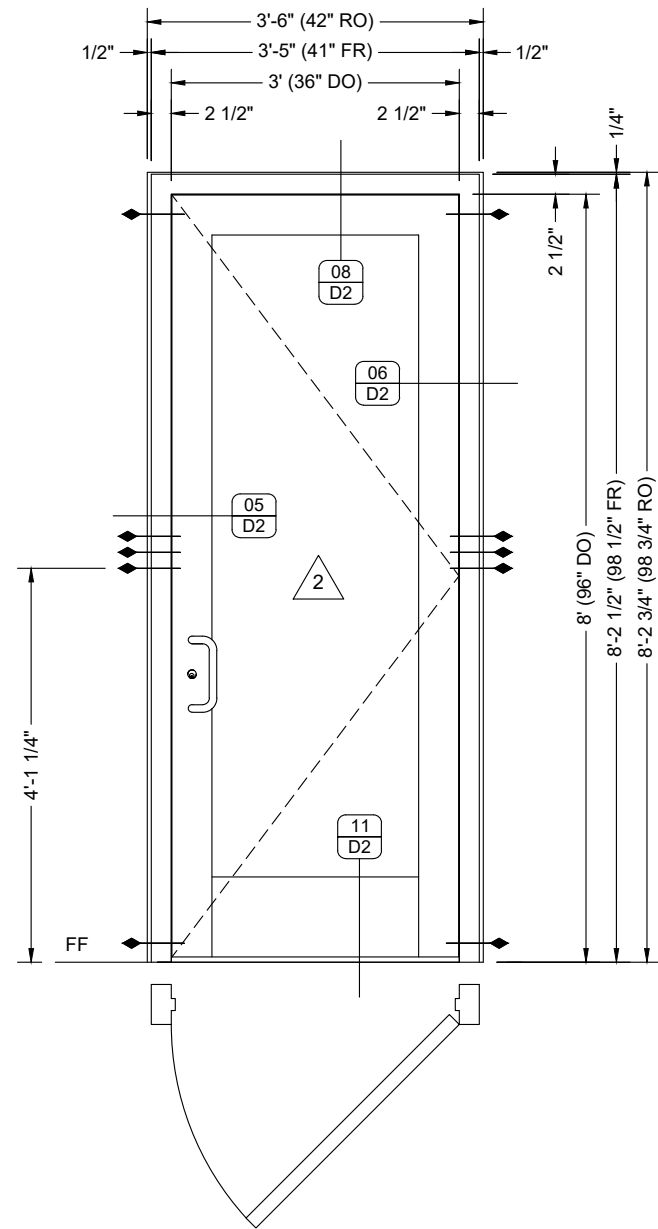
NOTE: BUILDING SUPPORTING SUBSTRATE MUST BE CONSTRUCTED SO THAT IT MEETS TDI REQUIREMENTS.

NO.	DATE	DESCRIPTION
1	09/15/21	First Submittal

SIX FLAGS GLASS
 108 E AIRLINE RD VICTORIA, TX 77901
 (W) 361-573-9612 (F) 361-573-2334

PROJECT: TIMBERGATE TOWNHOMES
NEW CLUBHOUSE BUILDING
 ARCHITECT: B&A ARCHITECTS, INC.
 (210) 628-1888
 GENERAL CONTRACTOR: CONCEPT BUILDERS
 (210) 828-4420

PROJECT NO.	SFG-2008-03
DRAWN BY	fp
DATE	09/15/21
SCALE	1/2" = 1'-0"
DRAWING	ELEVATIONS
SHEET	E5



DOOR HARDWARE
DOOR NUMBERR: CD1L

3 International Model 5000-TP Drop Plate	1/Door Leaf	Bronze	5007-DU
3 International Model 5001-TP-DU Closure	1/Door Leaf	Bronze	5001-TP-DU
3 Von Duprin Electric CVR Panic Device	1/Door Leaf	Bronze	HD-QEL-9947-NL-OP-313-3'
3 Von Duprin Electric Power Transfer	1/Door Leaf	Bronze	EPT-10
3 CY- 1 5/32" Dia Rim Cyl, Schlage 2o-022 Panic Ext Trim	1/Door Leaf	Bronze	3216
3 Oldcastle PH-21 Standard Panic Pull	1/Door Leaf	Champagne	12369
3 Roton 780-223HD x 95" Gear Inset Hinge w/Screws	1/Door Leaf	Bronze	780-224HDx95
3 D-118/D-120 Weatherstrip Sweep	1/Door Leaf	Bronze	3346
3 TH-57M Standard Threshold	1/Door Frame	Mill	TH57M

ELEVATION

CD1L

EXTERIOR ENTRANCE

OLDCASTLE WSD-500 ENTRANCE ON FG-5100 FRAMING

QUANTITY: 03
 SCALE: 1/2" = 1'-0"
 ARCH REF: 1/A2.5 2/A2.5 1/A7.1

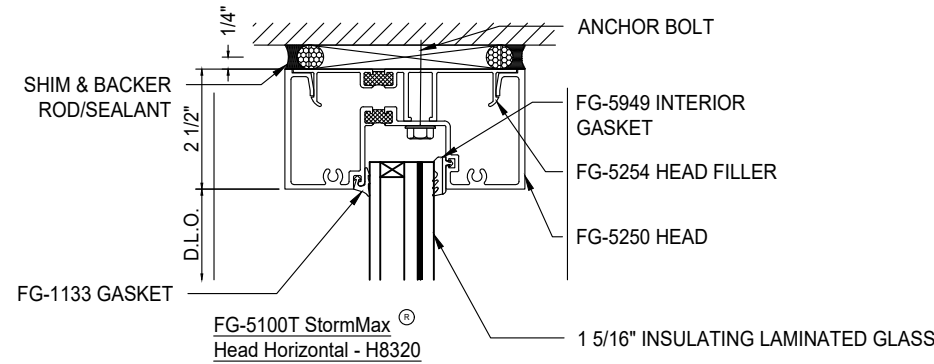
DATE	BY	DESCRIPTION
09/15/21	fp	First Submittal

SIX FLAGS GLASS
 108 E AIRLINE RD VICTORIA, TX 77901
 (W) 361-573-9612 (F) 361-573-2334

PROJECT: **TIMBERGATE TOWNHOMES**
NEW CLUBHOUSE BUILDING
 ARCHITECT: **B&A ARCHITECTS, INC.**
 (210) 628-1888
 GENERAL CONTRACTOR: **CONCEPT BUILDERS**
 (210) 828-4429

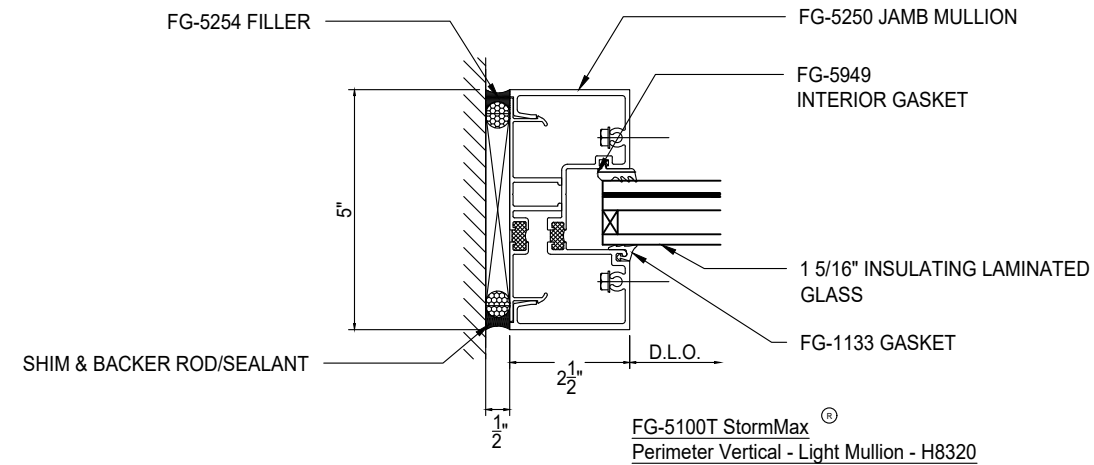
PROJECT NO.	SFG-2008-03
DRAWN BY	fp
DATE	09/15/21
SCALE	1/2" = 1'-0"
DRAWING	ELEVATIONS
SHEET	E6

NOTE: EXTERIOR STOREFRONT SHALL BE MOUNTED ON APPROVED SUBSTRATE MATERIAL THAT CONFORMS TO THE TDI PED REQUIREMENTS (SEE ANCHORING DRAWINGS A1 & A2 FOR MORE INFORMATION)

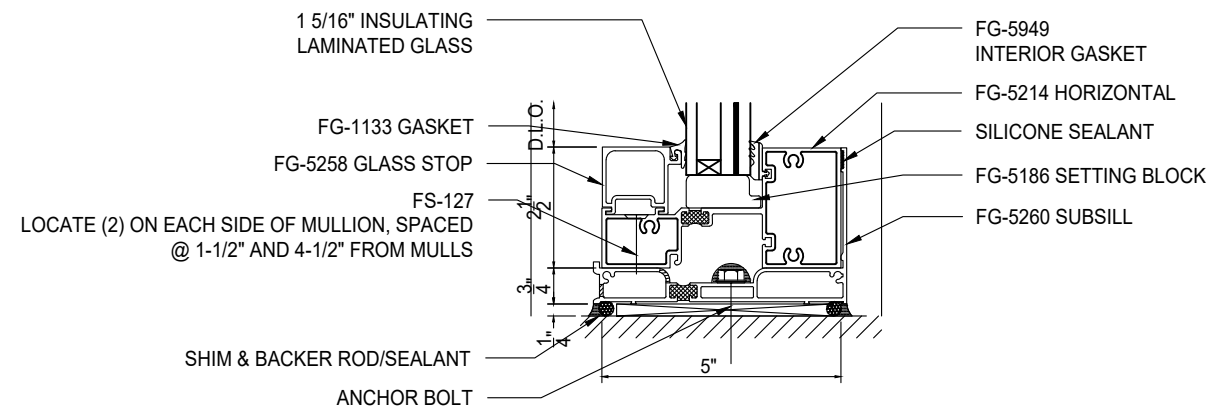


DETAIL 01 EXTERIOR HEAD
 SCALE: 3" = 1'-0"
 ARCH REF: 1/A2.5, 1/A7.1, 2/A7.4, 1/A7.9, 11/A7.10
 OLDCASTLE, SERIES FG 5100T ALUMINUM STOREFRONT FRAMING

NOTE: BUILDING SUPPORTING SUBSTRATE MUST BE CONSTRUCTED SO THAT IT MEETS TDI REQUIREMENTS.

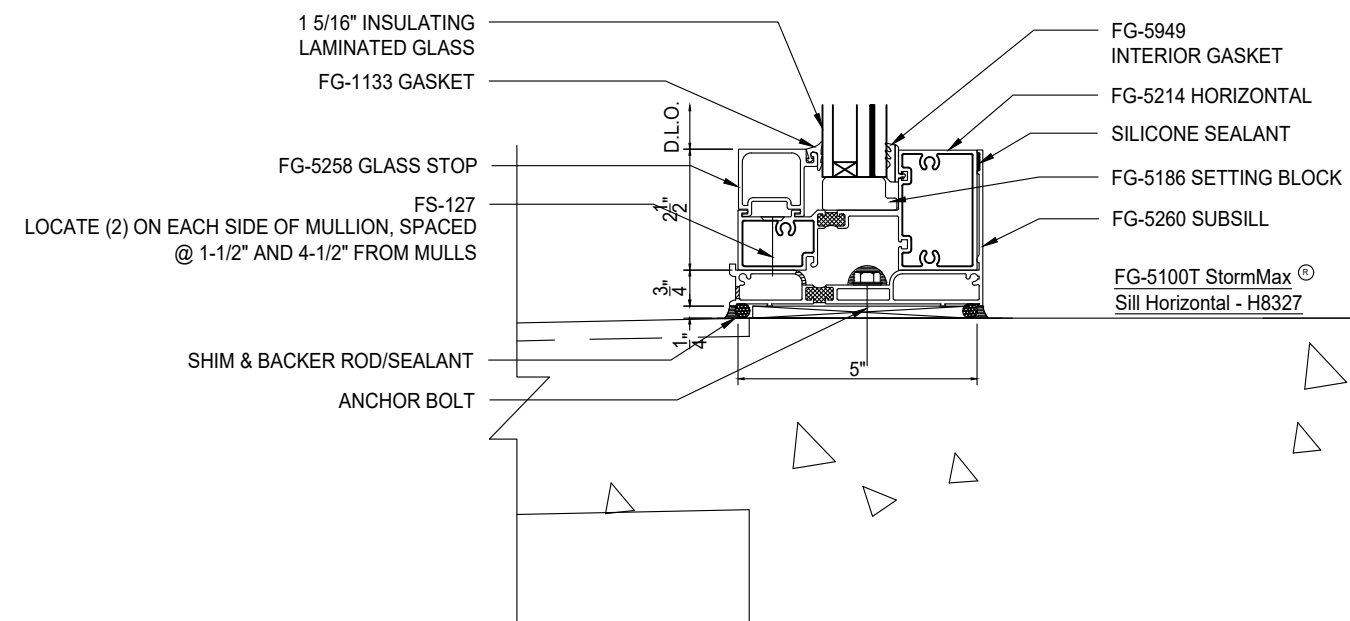


DETAIL 02 EXTERIOR JAMB
 SCALE: 3" = 1'-0"
 ARCH REF: 1/A2.5, 1/A7.1, 2/A7.4, 1/A7.9, 12/A7.10
 OLDCASTLE, SERIES FG 5100T ALUMINUM STOREFRONT FRAMING



DETAIL 03 EXTERIOR SILL
 SCALE: 3" = 1'-0"
 ARCH REF: 1/A2.5, 1/A7.1, 2/A7.4, 1/A7.9, 13/A7.10
 OLDCASTLE, SERIES FG 5100T ALUMINUM STOREFRONT FRAMING

DETAIL 04 EXTERIOR SILL
 SCALE: 3" = 1'-0"
 ARCH REF: 1/A2.5, 1/A7.1, 2/A7.4, 1/A7.9
 OLDCASTLE, SERIES FG 5100T ALUMINUM STOREFRONT FRAMING



NO.	DATE	DESCRIPTION
1	09/15/21	First Submittal
1	fp	BY
1		SUB

SIX FLAGS GLASS
 108 E AIRLINE RD VICTORIA, TX 77901
 (W) 361-573-9612 (F) 361-573-2334

PROJECT: **TIMBERGATE TOWNHOMES**
NEW CLUBHOUSE BUILDING
 ARCHITECT: **B&A ARCHITECTS, INC.**
 GENERAL CONTRACTOR: **CONCEPT BUILDERS**

PROJECT NO.	SFG-2008-03
DRAWN BY	fp
DATE	09/15/21
SCALE	3" = 1'-0"
DRAWING	DETAILS
SHEET	D1