

DERMENGINE

CheckForSkinCancer.com

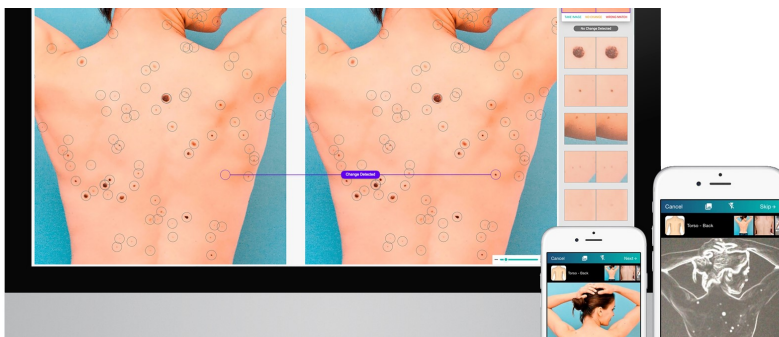
Q-1 2020

What is DermEngine?

An intelligent state-of-the-art dermatology software for the imaging, documentation and analysis of skin conditions including skin cancer. Powered by artificial intelligence (AI), this smart dermatology system helps OHSU manage your skin health with the latest technology. Early detection of skin cancer is essential to reducing morbidity and mortality from both melanoma and non-melanoma skin cancers.

Advanced Skin Cancer Screening (ASCS) is easy, pain-free, and takes approximately 15-20 minutes. Full Body Imaging (**FBI**) is performed by our Dermographer who is trained to capture a precise series of images to visualize the entire body. Images are instantly uploaded to the cloud-based DermEngine server. Each area is examined for skin cancer by highly accurate AI, and the precise location of all lesions (both benign and cancerous) is recorded on an Avatar of a participant's body for easy follow-up confirmation by an academic dermatologist. The software allows simple generation of a signed screening report.

Our **ASCS** powerfully augments clinical examination, facilitating exceptional accuracy in clinical decision-making. ASCS is the most advanced web-based solution for capturing and analyzing images of the skin, allowing ultrasensitive detection of new or changing lesions that frequently may be early stage skin cancer.



"Ask any Radiologist what the most important image is, and they will tell you it is the first one."

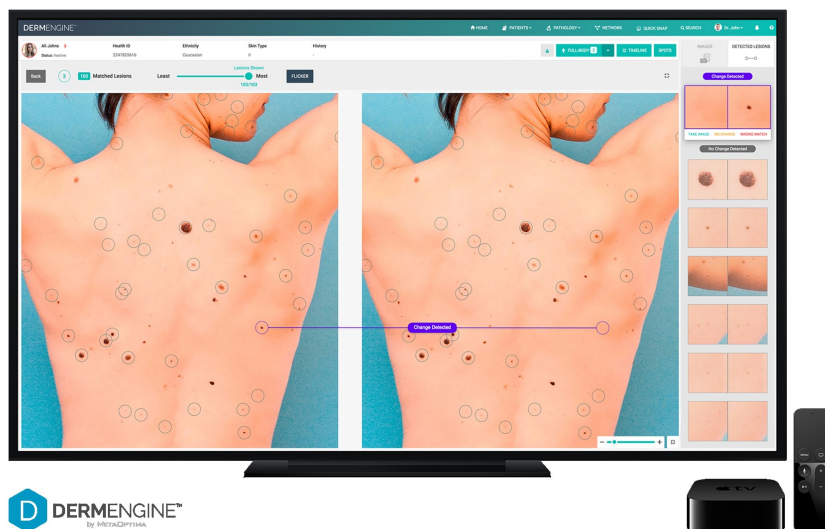
"There is evidence that visual skin examinations by clinicians has modest sensitivity and specificity for detecting melanoma"

US Preventive Services Task Force

In This Issue

- [Intelligent Dermatology](#)
- ["What does the literature say?"](#)
- [Participate and get access to Academic Dermatologist no matter where you live in the USA!](#)
- [DermDetect Skin Imaging Centers](#)

CheckforskinCancer.com



Melanoma is the #1 cancer in women under the age of 29 years old.

Intelligent Dermatology

Digital photography is widely used by **Dermatologists** to document the current size, color, and shape of a mole or lesion. Many use sophisticated software systems to map the precise location of each mole for serial examinations that may detect changes in size or additional new suspicious moles. The average charge is \$400. Full Body Imaging (FBI) uses Artificial Intelligence (A.I.) to improve the process. ASCS includes FBI, close-up clinical images and Dermoscopy too!

The human body has many curves. Our “on-axis” imaging is a superior approach for generating high quality in-focus images that are used for calculating precise lesion area and volume. Photographs are easily obtained using a hand-held high resolution iPad Pro and a “Certified Dermographer”. After photography, sophisticated software is used to map each lesion onto a 3D avatar for access by a dermatologist or other medical professionals through the cloud.

Since the FBI exams only capture the surface morphology, we are also using ELM/Dermoscopy as a noninvasive method that allows the in vivo evaluation of colors and microstructures of the epidermis, the dermoepidermal junction, and the papillary dermis not visible to the naked eye to provide additional diagnostic certainty where necessary.

Patient centric medicine

Patients are becoming more conscious about healthcare and there is a growing demand for better quality care. Access and control over images and reports allows a patient to control *their* healthcare experience. The patient can use our free patient portal on any Smartphone or Tablet to see their images and even add new images for Tele-dermatology review .

The “Cloud” is the future

Secure and Efficient—The DermEngine dermatology platform is built with the highest privacy and security standards. It is HIPAA-compliant with multi-region data centers.

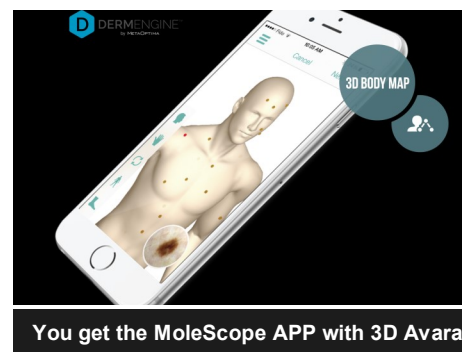
What does the literature say?

Total Body Photography (also known as TBP or Full-Body Imaging) is the most effective technique for imaging all lesions on a patient’s body.

“Five percent to 30% of all melanomas are identified incidentally on total-body skin examinations (TBSEs) performed by a trained provider and thus would not have been caught with only a focused skin examination or patient self-examination.”^{7,8}

“Melanoma survival rates are dramatically improved if a melanoma is detected early, especially when the malignant cells are confined to the tissue of origin — called melanoma in situ or Stage 0.”

When melanomas are not caught early, and have invaded into the deeper layers of the skin, the survival rates drop.



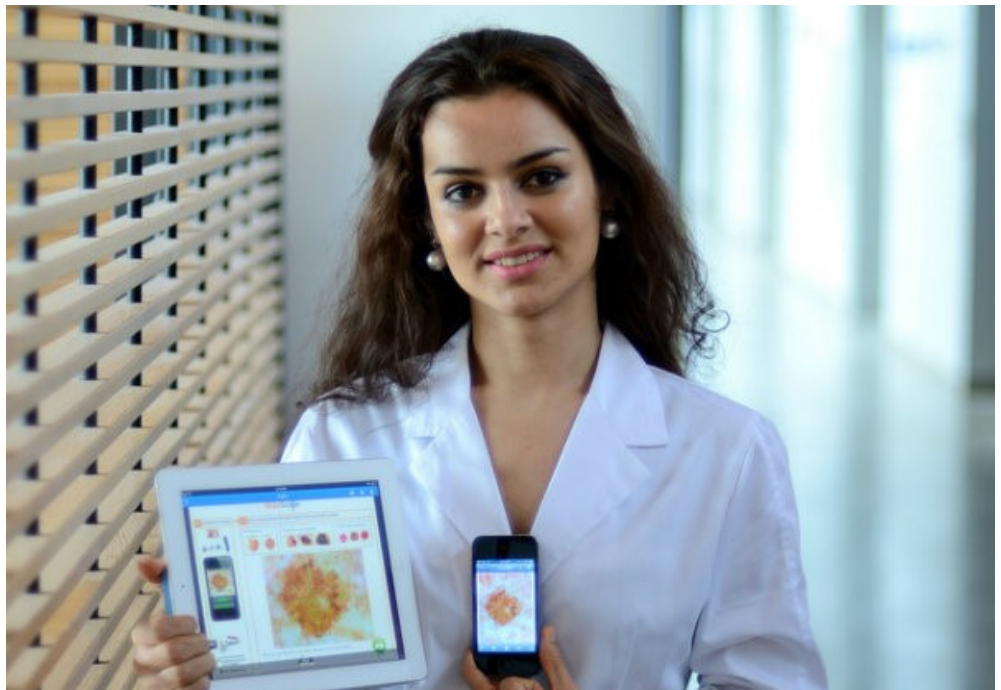
Anyone can get skin cancer

Anyone can get skin cancer! Any age, gender, or skin color! Early detection of Melanoma is vital to your survival. Two people die every hour and a 7.7% increase is estimated for 2020!

When detected early, the five-year survival rate for melanoma is 98%.

Get your annual screening the same way you get your annual blood test. Use our superior technology and experts that are able to identify skin cancer by looking at ultra-high-resolution images on powerful workstations.

Our methods are 100% noninvasive and only take 15-20 minutes. Ask your doctor about our advanced skin cancer imaging with "Intelligent Dermatology"



View your skin images on any Smartphone or Tablet

Participate and get access to Academic Dermatologist no matter where you live in the USA!

Advanced Skin Cancer Screening (ASCS) uses "Intelligent Dermatology" with dermoscopy to capture, store, and transfer your file for analysis by our academic dermatologists or your local Dermatology specialist. Many local Dermatologists provide support for their Primary Care physicians. Hospitals appreciate the efficiency and convenience of network connectivity with their staff. The Dermatopathology service can use DermEngine to see your clinical images and dermoscopy prior to their report that can easily be added to your file!

Studies have proven that Dermoscopy improves both the sensitivity and accuracy of detecting melanoma compared to the unaided eye. There was a reported 42% reduction in patients referred for biopsy. Early detection of non-melanocytic lesions like Basal Cell Carcinoma and Squamous Cell Carcinoma were also improved. The Certified Dermographer will perform the ASCS in your doctor's office, clinic, at your place of work, or any of our thousands of regional offices. Use our web registration and convenient subscription services at "CheckForSkinCancer.com". Since this is an annual exam, we offer the ASCS for only \$23 per month and the FBI for only \$9.99 per month. Conveniently charged to your credit card. Become an activist when you sign up and join (only \$5). The activist will receive our full support to bring our service to their community and they receive complementary ASCS!

DermDetect Skin Imaging Centers

The powerful DermEngine is cloud-based so all of our imaging locations are able to perform the ASCS and FBI screenings at any location. ASCS is scheduled via the "CheckForSkinCancer.com" website. Your local network is private and controlled by your trusted physician and you as the participant. You can easily open your record on any Smartphone or Tablet to allow you the ability to look for changes. You can also easily add new images to your private record. You can show your file to anyone anywhere that there is an internet service provider. You can now purchase the Sklip dermatoscope attachment for your digital device and then you can perform dermoscopy imaging on your iPad or Smartphone. The APP will assist you in sending your images to your doctor or ours for a Teledermatology consult. There is a fee; however, most insurance companies will reimburse for Teledermatology. It speeds up your access to your doctor and costs less than most office visits.

All of our community-based imaging centers are located in professional office buildings with easy access. Join our club and help us bring every set of images from your ASCS to your team of professionals by using our securely encrypted database. Intelligent Dermatology is finally affordable!

Contact Us

DermDetect
500 La Terraza Blvd
Escondido, CA 92025

info@dermdetect.com

Visit us on the web at
www.dermdetect.com

CheckForSkinCancer.com

"You get yearly blood test and/or Mammogram, why not a baseline exam of your largest organ?"

Cost less than 70 cents per day

References and reprints available on request.

CheckForSkinCancer.com—New subscription service with low monthly payments

Online registration—Become a "Skin Activist Member" for only \$5

Our members help us bring this valuable new technology to their doctor. There is no cost for your doctor to join our club and gain access to the powerful DermEngine workstation. Help us expand and you can earn complementary ASCS exams! Register and pay online for the ASCS for only \$249 or \$23 per month annually.

FBI is now only \$99 when your doctor and you read the file together.



DermDetect Headquarters

The average wait time to see your dermatologist is 5-6 weeks. We can schedule ASCS much sooner and we only take 15-20 minutes to complete and augment your time with your doctor.

The FBI is much more with TBP on-axis clinical images and ELM/Dermoscopy, the APP is a powerful new tool that has been widely embraced around the world. The network convenience with ability to use Teledermatology, consults between physicians, access to your images by the pathologist before they read your biopsy is what makes it "Intelligent Dermatology".

DermDetect helps medical professionals manage busy workflows with secure cross-platform access for a targeted focus on enhanced patient outcomes. DermEngine can shorten the time needed to diagnose and this helps America prioritize what is most important - saving lives and reducing healthcare costs.