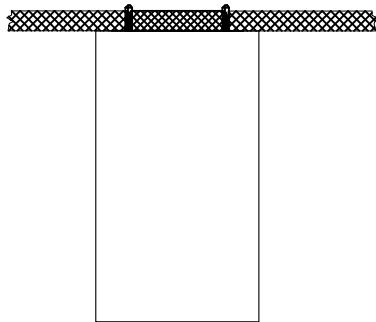


INSTRUCTION MANUAL

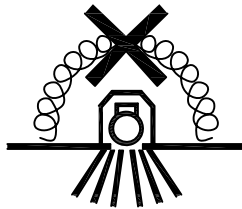
- Before installing the lighting fixtures, please read this instruction manual carefully.
- The lighting fixtures should be installed, connected and tested by a certified installer based on the local regulations.
- Lamps should always be installed or replaced with care.
- Don't use over rated power lamp.
- Relamping only can be done when the power is off and the lamp is completely cooled down.
- When a lamp is to be cleaned, switch off the fixture and let it cool down completely. Clean the fixture with a soft cloth and a standard PH neutral detergent. Stainless steel finishing should be maintained regularly.
- Misuse of, or changes to the fixture shall nullify the guarantee.
- This recessed luminaire shall under no circumstance be covered with insulating matting or similar material.
- This luminaire is IP20, indoor use only.

Model	Normal Voltage	Rated Wattage	LED Used Power Consumption	Appropriate LED Driver	Cross Section of The Power Cord
FS3040-35	AC220V-240V	35W	30.5W/COB chip	Constant current: 850mA 27-42V	2x0.5mm ²

A1

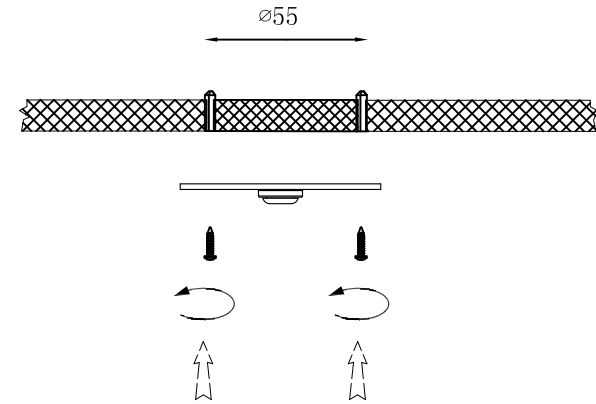


A2

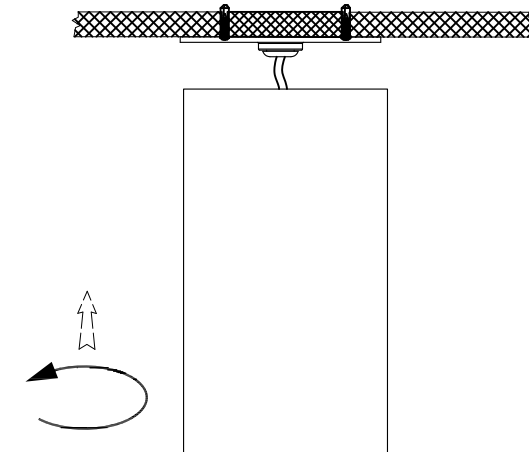


Installation:

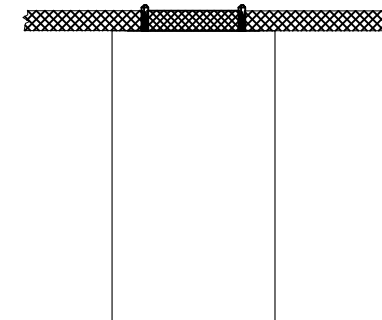
- A1— Please read the data in the graph before using.
- A2— Please pay attention to installing method and the spacing between parts, making appropriate holes according to the luminaire specifications.
- A3— Connect with power after power-off.
- A4— Put the fixture into the ceiling according to the sketches.
- A5— Finish lamp installation.



A3



A4



A5