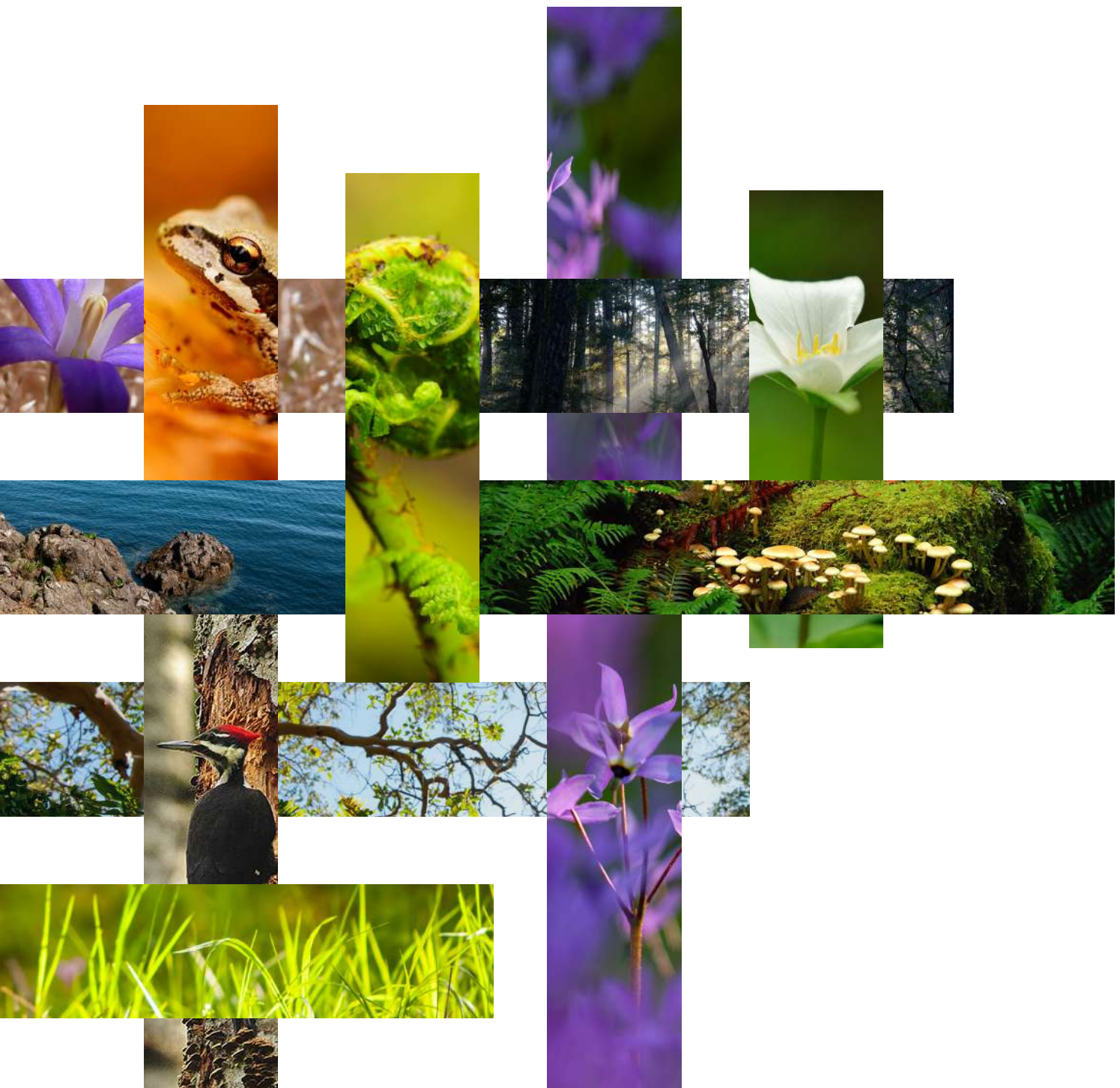


Creating a SC'IA/NEW Tribal Park at Mary Hill

**A PLACE FOR SC'IA/NEW TO WEAVE OUR
COLLECTIVE PAST, PRESENT, AND FUTURE**



Everything is interconnected. By honouring that we strengthen our community and yours.

We live in a collective community where everyone is essential and no one is more important than anyone else. In our culture we walk together with others, our partnerships are viewed as relationships, and relationships are forever.

When we work together,
we are weaving our efforts,
values, and goals with yours.

Walking side-by-side,
leading together
as equals.

The SC'IA/NEW Tribal Park at Mary Hill represents SC'IA/NEW's choice to dedicate the majority of its treaty lands to a conservation outcome and forego conventional development on its lands.

In doing so, SC'IA/NEW seeks to reclaim ancestral lands taken through historical dispossession, restoring Nation's cultural, spiritual, and community ties. The \$15 million value of this project represents the foregone cost of conventional development on the lands in favour of SC'IA/NEW-led ecological stewardship, cultural revitalization, conservation-compatible economic development, and healing.

Ultimately the Tribal Park aims to ensure SC'IA/NEW members can return home and rebuild their heritage for future generations.

WALK WITH US

We invite you to join us to raise approximately \$15 million to preserve Mary Hill as SC'IA/NEW Tribal Park.

Walk with us in friendship to preserve and provide access to Mary Hill, a pristine ecosystem and culturally sacred piece of land that has been out of reach for decades to the general public.

On Vancouver Island, located a short distance from BC's capital city, Victoria, Mary Hill would become a highly visible SC'IA/NEW Tribal Park – a world-class demonstration of the power of reconciliation and Indigenous-led conservation for Canadians and across the globe.

In addition to preserving the land, our SC'IA/NEW community members can connect with the land and provide opportunities for our family members to return home to family, culture, and jobs.

We want to share the learning and experience of Mary Hill with others.



STEP INTO MARY HILL

Located on the southern tip of Vancouver Island in Metchosin lies a tract of land sheltered from development impacts. Mary Hill is Crown land, currently held by the Department of National Defense and a key part of the SC'IA/NEW treaty offer. The land represents thousands of years of cultural practice and sacred truths for our community.

It is a space and a place our Ancestors cherished, harvested food, offered cultural teachings, and cared for their community. We want to bring this land back to our community and our youth.

DOING THINGS DIFFERENTLY

For several decades Mary Hill has been closed to the public and the entire SC'IA/NEW community.

Our SC'IA/NEW leadership is exploring options as they prepare for potential ownership of this property. While a more conventional development plan is a prospect, a preferred alternative is to preserve the land as a SC'IA/NEW Tribal Park.

The revitalization and reclaiming of Mary Hill would include our community sharing the land, education, experiences, and benefits with the greater community.

HOMETO

338 acres of land
15% of unprotected old-growth Coastal Douglas fir forest
30+ at-risk species



PROJECT GOALS:

Walking together with friends

Reclaim, conserve, share, educate, advocate, support, and strengthen friendships.

SC'IA/NEW First Nation is a member of the Te'mexw Treaty Association, a group of five Coast Salish Nations working together to negotiate modern treaties in the BC Treaty Process. Mary Hill is a 338-acre parcel held by the Department of National Defence (DND) which has been declared surplus to DND needs, and confirmed as part of SC'IA/NEW's formal treaty offer. Unique among Indigenous Protected and Conserved Areas, the SC'IA/NEW Tribal Park will be established and governed pursuant to SC'IA/NEW law and agreements with supporting agencies and third-parties.

"Mary Hill has been fenced up for decades, and many of our community members have never set foot on the land. There are many different endangered species at Mary Hill, and our cultural learnings, lessons, and Ancestors' footsteps are also endangered. We want to share this space with our community and yours, working together and sharing our history, and our future."

— CHIEF RUSS CHIPPS, SC'IA/NEW NATION

THE PROJECT:

- Unites local, provincial, and federal organizations representing conservation, post-secondary education, parks, recreation, adventure, and community investment.
- Is a meaningful way to work together in friendship and demonstrate a unified commitment to reconciliation.
- Is an opportunity for SC'IA/NEW to revisit, revitalize, and regain cultural and historical significance.

Conservation: Protecting Vital Ecosystems



WHAT IS A TRIBAL PARK?

Tribal Parks are sometimes referred to as Indigenous Protected and Conserved Areas or IPCAs. Still relatively rare in Canada but growing in status, Tribal Parks or IPCAs are defined by the Indigenous Circle of Experts as initiatives to protect lands and waters where Indigenous governments have the primary role in protecting and conserving ecosystems through Indigenous laws, governance, and knowledge systems.

Tribal Parks and IPCAs are alternatives to the traditional parks models commonly known to Canadians, which often create barriers for Indigenous communities to have active connections with their territories.

THE TRIBAL PARK WILL

- Preserve 15% of the world's last remaining, unprotected old-growth Coastal Douglas fir forest.
- Protect diminishing habitat of globally, at-risk species and biodiversity.
- Contribute to efforts to mitigate climate change through nature-based solutions.

BC CONSERVATION DATA CENTRE HAS CONFIRMED:

31 plant and animal
species-at-risk

11 COSEWIC-listed
species-at-risk

4 critically imperilled
ecological communities

THESE SPECIES INCLUDE:



Western
Screech-owl



Townsend's
Long-eared Bat



Peregrine Falcon



Sharp-tailed Snake

Northern Red-
legged Frog

Band-tailed Pigeon

Double-crested
Cormorant

Great Blue Heron

Northern Pygmy Owl

Olive-sided
Flycatcher Bird

Hoary Bat

Little Brown
Myotis Bat

Yuma Myotis Bat

Fringed Myotis Bat

Silver-haired Bat

Propertius

Duskywing Butterfly

Macoun's Meadow-
foam Herb

Coast Microseris
Plant

Poverty Clover

Batwing vinyl Lichen

Peacock vinyl Lichen

Considerable
gingerbread Lichen

Nested beard Lichen

Speckled
mantle Lichen

Rigid Apple Moss

Banded Cord-moss

Common
bladder Moss

Rounded
Pygmy-moss

Norris' beard Moss

Bird's-foot
Wing-moss

Muhlenberg's
Cord-moss

Wetland habitat

RARE HABITATS



Coastal Douglas fir



Garry Oak



Shoreline

**STRENGTHENING
COMMUNITIES**

Building on a
Nation’s innovation
through resilience

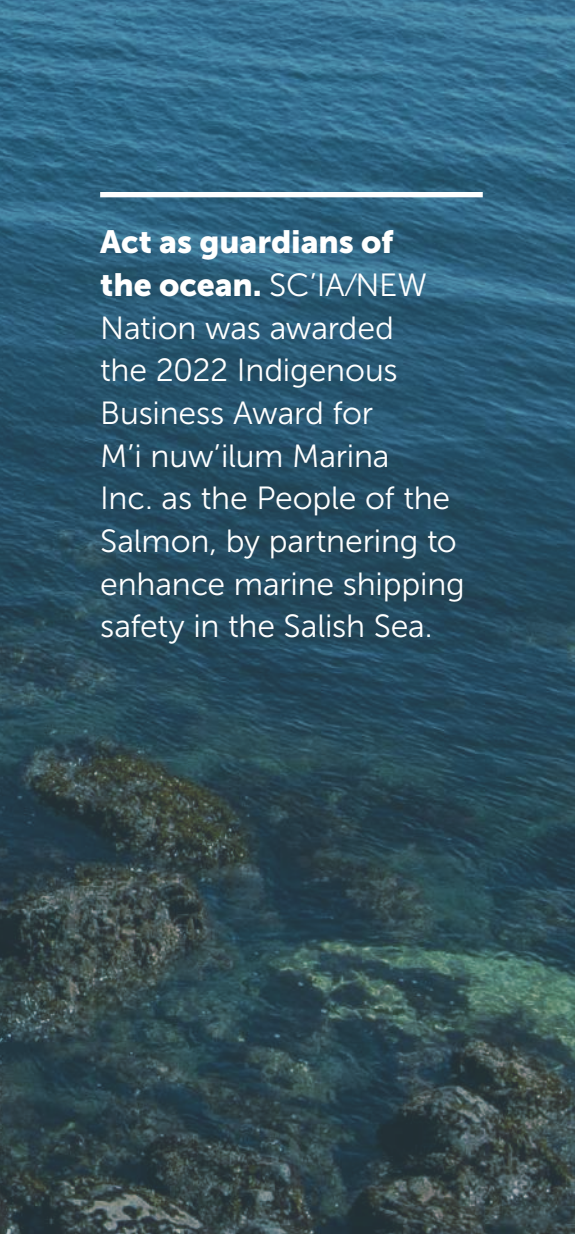
The SC’IA/NEW Tribal Park provides benefits, opportunities, and experiences to people across the region and will help create socio-economic and cultural opportunities without significant development.

SC’IA/NEW Chief and Council prioritize supporting and promoting strong, healthy, and happy lifestyles. Our SC’IA/NEW community has demonstrated many times over creative, innovative, and path-paving solutions to strengthen communities near and far.

**AS STEWARDS OF PEOPLE,
THE LANDS, WATER, AND AIR,
SC’IA/NEW CONTINUE TO:**



Act as guardians of the ocean. SC’IA/NEW Nation was awarded the 2022 Indigenous Business Award for M’i nuw’illum Marina Inc. as the People of the Salmon, by partnering to enhance marine shipping safety in the Salish Sea.



Develop environmentally sustainable solutions, to establish sustainable dwellings at Spirit Bay residential community on SC’IA/NEW Territory. SC’IA/NEW partnered with the Trust for Sustainable Development to develop Spirit Bay as a fishing village-inspired community by combining scientific, economic, social and financial analysis with extensive public and government consultation.



Embrace shared vision and agency. SC’IA/NEW made Canadian history with the City of Langford and District of Metchosin in a three-way land swap to provide green space surrounding a new business park and residential development. This first-of-its kind reconciliation agreement enabled SC’IA/NEW economic development together with conservation outcomes for the surrounding community.



SC’IANEW is evaluating the economic, cultural, educational, and environmental stewardship potential of the Tribal Park. A key goal is to create local job opportunities within the expected conservation & culture economy. Economic modelling indicates over 30 Full Time Equivalent (FTE) positions could be sustained 5 years after the tribal park is operational.

BENEFITS OF A TRIBAL PARK



**ECONOMIC
PROSPERITY**

- Investment
- Diversification
- Partnerships
- Infrastructure



**SOCIAL
EMPOWERMENT**

- Job Creation
- Income Sustainability
- Training
- Education
- Certification



**ENVIRONMENTAL
CONSERVATION**

- Environmental Stewardship
- Protection
- Guardians
- Research
- Biodiversity



**CULTURAL
VITALITY**

- Community Stewardship
- Elders and Youth Engagement
- Cultural Assets
- Foods and Medicines
- Language

Eco-Education & Experiences

Action-based learning in relationship with the land

The revitalization and reclaiming of this land will extend an invitation to the greater community to walk with us, in spaces our Ancestors walked, led, and taught. This rare habitat will offer exciting eco-tourism, recreational, and health opportunities for Vancouver Island residents and visitors by providing:

Education on changing society's relationship to past and present traditional values.

Post-secondary research and experiential learning opportunities.

Human impact-aware adventure that fosters appreciation of our natural habitats.

Traditional ecological knowledge-sharing workshops.

Nature bathing, therapy courses, and other healing activities.

Ecological and archaeological opportunities.

School environmental programs.

"As an organization deeply committed to the principles of respect, collaboration and environmental stewardship, HAT is honoured to stand firmly beside SC'IA/NEW leaders and community members in their vision to establish the SC'IA/NEW Tribal Park at Mary Hill"

— KEVIN SMITH - EXECUTIVE DIRECTOR, HAT

THE JOURNEY SO FAR

Since early 2017, SC'IA/NEW First Nation and local community agencies have been walking together meaningfully to demonstrate a mutual commitment to reconciliation.

- 2017 — Treaty land discussions begin between regional Nations that include the transfer of lands, including the transfer of Mary Hill to the SC'IA/NEW Nation.
- 2019 — SC'IA/NEW First Nation invites the District of Metchosin, Habitat Acquisition Trust, and Pearson College UWC (project friends) to explore the opportunity to conserve the Mary Hill lands as a Tribal Park or IPCA initiative.
- 2022 — A Standstill agreement is signed. Over the past 18 months, project friends have explored the feasibility of an audacious and mutually beneficial approach to reconciliation by creating a Tribal Park, or Indigenous Protected and Conserved Area on the Mary Hill lands.
- 2024 — Fall. Community Votes to approve Tribal Park.
- 2025 — Spring. SC'IA/NEW Steering Committee and Project Team is created.

SC'IA/NEW community members voted in late 2024 in favour of a Tribal Park outcome at Mary Hill. SC'IA/NEW Chief & Council are working to develop a Steering Committee comprised of SC'IA/NEW leadership, Band administration, community members, and representatives from supporting agencies such as Habitat Acquisition Trust. SC'IA/NEW is actively working to hire a Project Team who will report to the Steering Committee, with assistance and support provided by supporting agencies. SC'IA/NEW leadership, as directed by their community members, will retain ultimate decision-making authority on matters related to the SC'IA/NEW Tribal Park.

THE PATH FORWARD

- Readiness Phase | January - September 2025
Post community-vote planning & visioning
- Design Phase | October 2025 - May 2026
Transition planning towards implementation
- Implementation Phase | June 2026 - Summer 2027
Establish conditions for Tribal Park designation
- Monitor Phase | Fall & Winter 2027
Review conditions for success

LET’S WALK TOGETHER

The \$15 million will keep SC’IA/NEW Nation “economically whole” in relation to land development alternatives and ensure that viable, conservation-compatible ventures can be established and sustained on the land.

The \$15 million funding target represents a 5-year business plan to establish the long-term conditions for the Tribal Park.

1. FOREGONE DEVELOPMENT RIGHT FUND:

Majority of funds will be used to compensate SC’IA/NEW Nation for revenue that would otherwise have accrued from a conventional real estate development at Mary Hill.

2. ECONOMIC VENTURE FUND:

To establish conservation-compatible economic and social enterprises owned and operated by SC’IA/NEW with seven ventures currently being modeled.

3. PROJECT CAPACITY FUND:

To cover annual project development costs, including community engagement, consultant fees, project management, and communications.

4. CAPITAL & MAINTENANCE FUND:

To support community and maintenance costs for managing an IPCA over at least 30 years by establishing an Indigenous Guardians program.

Get involved



Donate

You can donate a one-time gift, a pledged payment or a monthly contribution through Habitat Acquisition Trust. Your donation over \$20 may be eligible for a charitable tax receipt. Donations may be eligible for charitable tax receipt, based on tax jurisdiction rules from which you are donating.



Make a funding commitment

The project, as it stands, is to ensure Mary Hill becomes a Tribal Park. By entering into a gift agreement that secures commitment once the Mary Hill project is confirmed, you will bring us one step closer to realizing the Tribal Park vision.



Host an event

Third-party events offer an interactive and engaging way to bring supporters together in celebration of the the SC’IA/NEW Tribal Park vision. We can provide you with tips and tools to gather your network and provide an entertaining experience that raises awareness and funds for the project.



Leave a legacy

A gift in your will to the SC’IA/NEW Tribal Park will ensure an enduring legacy of reconciliation, conservation, and community experience.

“Conserving this land is a gift we can offer to all future generations from all over. We are seeking support from people to walk with us, and together we can enhance our communities with education, cultures, and conversation.”
– CHIEF RUSS CHIPPS,
SC’IA/NEW NATION

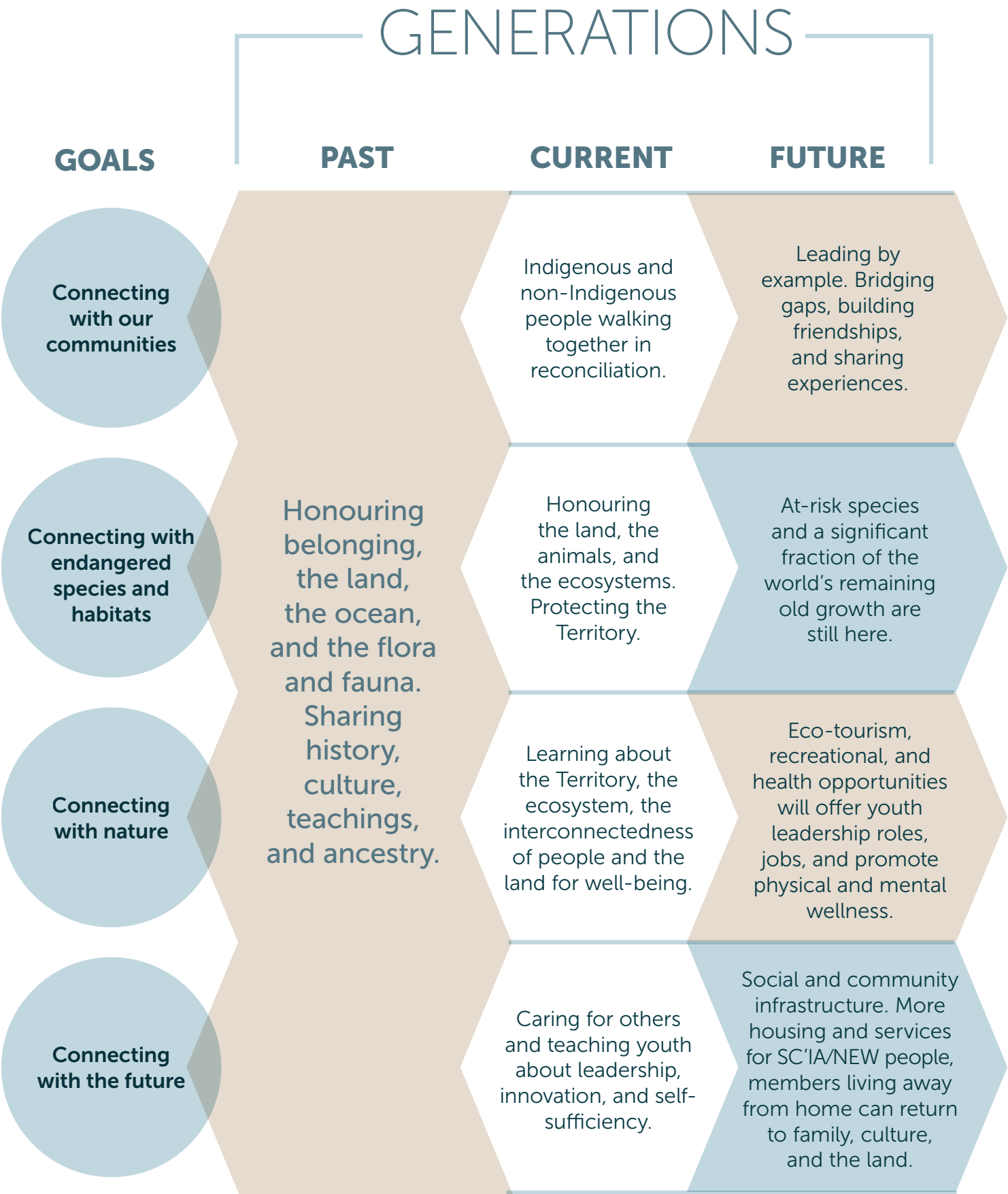
Mary Hill through a Seven Generations Lens

Seven Generations thinking is a shared value among many Indigenous people.

Before making a decision, it is crucial to look seven generations ahead: **How will this impact future generations? How will it benefit them?**

The philosophy also acknowledges how the seven generations before you have aided in the success of today.

Will today's decision honour the generations that came before?





**PEARSON
COLLEGE**



A PRODUCT BY
Bespoke::
Social Profit Solutions



CONTACT INFO

SC'IA/NEW FIRST NATION

www.scianew.com

Chief Russ Chipps

E tribalpark@beecherbay.ca

T (250) 478-3535

HABITAT ACQUISITION TRUST

www.hat.bc.ca

Kevin Smith *Executive Director*

E Kevin@hat.bc.ca

T (250) 995-2428

For more information about the
SC'IA/NEW Tribal Park project, please visit
www.scianewtribalpark.ca

WATCH THE VIDEO

SC'IA/NEW Tribal Park
How to Support our Project

