



Lo-Pro **PUSH** **BACK**

[the *best* use of space. period.]

Why ADVANCE?

“

I am continually amazed with the Advance Storage team and with their speed, expertise, professionalism, and responsiveness. They have responded to many last-minute changes in design and sequencing, and have still kept the installation ahead of schedule!

”

Johnson & Johnson, Peter Brown, SLC Distribution Manager



trust+

For over 50 years, Advance has been the trusted source providing innovative, safe, and durable storage solutions. Relationships are very important to us. We want you to be as happy with our Pushback systems in 10 years as you are the day you purchase it. To ensure we earn and maintain your trust, our pushback systems are built to unmatched quality standards that have been proven in over 10,000 installations throughout the world. If you want a proven, durable, long lasting pushback system, Advance is clearly the best choice.

Give us the chance to prove it to you.

#1 Pushback Market Share Leader

Unprecedented 10-Year Product Warranty

Operated in over 10,000 successful installations

Why PUSHBACK?

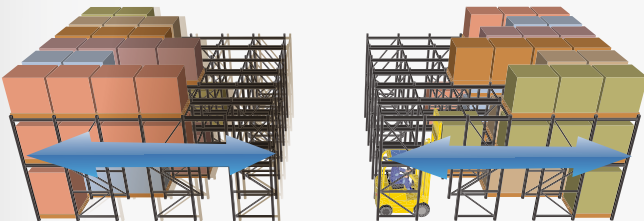
Double your storage density with Advance Pushback. With the ability to store up to 6 pallets deep, Advance pushback eliminates wasted aisle space in your warehouse. In addition, Pushback saves significant maintenance costs due to removing the need to drive into rack. Pushback storage is the best choice for high density, fast moving distribution warehouses saving time, space and money.

To operate a Pushback system, simply place the first pallet on the structural steel cart. Use the next pallet to push the load back, up to 6 pallets deep. To remove the pallets, lift the pallet and back out (slowly). Let gravity do the rest.

High Density Storage

Fast Operation

High Selectivity



6-Deep Drive-In Rack

50% utilization average
1,000 pallet positions = 500 pallets stored
Only one SKU in each bay



6-Deep Pushback

80% utilization average
1,000 pallet positions = 800 pallets stored
Flexibility to store different SKUs on each level

+ space

+ safety

Due to the dynamic nature of Pushback, safety is an area no warehouse operator should ever compromise on. Period.

With an unflagging commitment to safety and over 20 years of experience producing the leading pushback system, Advance has engineered safety features into our product that are unmatched in today's industry. With Advance's uncompromising commitment, take the worry out of your warehouse safety concerns.



Linked Carts

A safety *requirement*. Our linked carts feature eliminates the possibility of a load being stranded and suddenly rolling forward out of control.



Serrated Pallet Grips

Advance pallet grips allow less than perfect placement of pallets and will "grab" the underside of the pallet ensuring that the load remains properly positioned on the cart.



Captured Carts

Advance carts are fully captured, preventing cart lift-out by fork truck operators.



LO-PROPUSHBACK

[the best use of space. period.]

A pioneer in the Pushback market since its infancy, through quality, innovation and great customer service, Advance has grown to become the recognized market leader and the only supplier of Lo Pro Pushback Systems.

With 20-year old Advance systems still operating “as good as new”, we can confidently assert that Advance pushback will give you years and years of uninterrupted service. We back our Lo Pro systems with an unprecedented 10-Year Warranty – assuring you that your system will be operating a decade after purchase

Our industry leading Lo Pro system is the most durable, lowest stack height, safest and easiest to install pushback you can buy. We hold ourselves and our products to unmatched quality standards.

Low Profile

The industry's lowest stack height measuring 6" on the 6-deep system. This feature allows you to store taller pallets.



Welded Rail Frame

Rails are permanently aligned at the factory to prevent field misalignment and maintenance. This feature enables ADVANCE to reduce Pushback installation costs by up to 40%.



Contrasting Colors

These help the operator identify available storage space on upper levels. Galvanizing is also available.

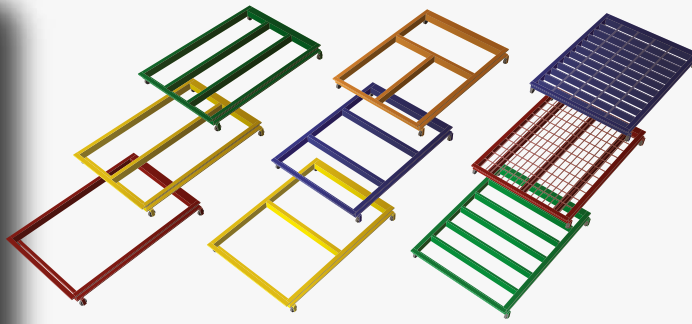


+ innovation

Do you have unique pallets?

Full-Support System

The innovative Pushback system allows you to store virtually any pallet. Fabricated from heavy-duty structural steel and providing a pushback system with level carts, the system adapts our standard Pushback to meet your specific pallet needs. It can be configured with specialty strut patterns or wire mesh deck - all depending on the challenges facing *your* storage requirements.



+ solutions

Is your Drive-In Rack working for you?

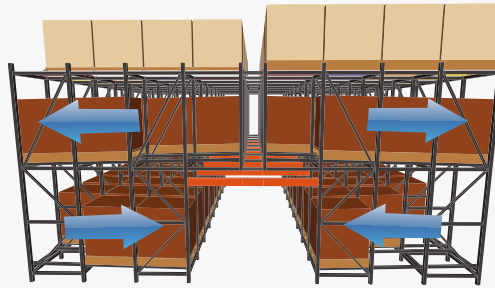
Drive-In Retro-Fit PushBack

Convert your existing drive in rack to pushback with Advance's patented drive in retrofit system. Get all of the advantages of push back at a fraction of the cost of a new system.

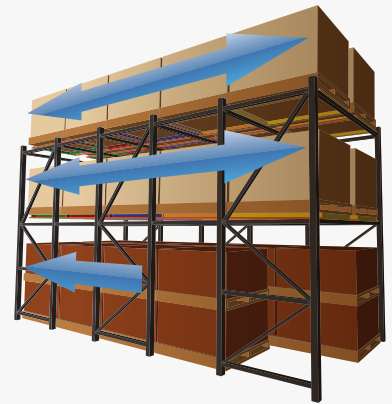




**Pushback Over
Pallet Flow**



Pick-Tunnels



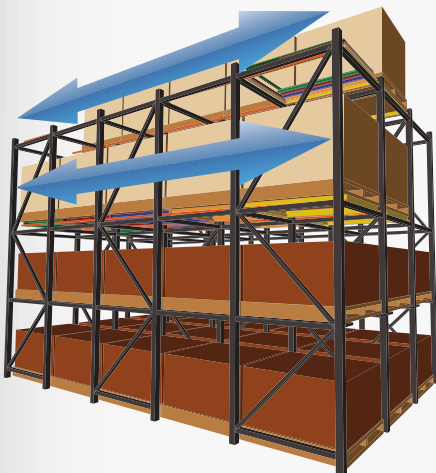
**Double Floor Stack
with Pushback above**

= *the answer.*

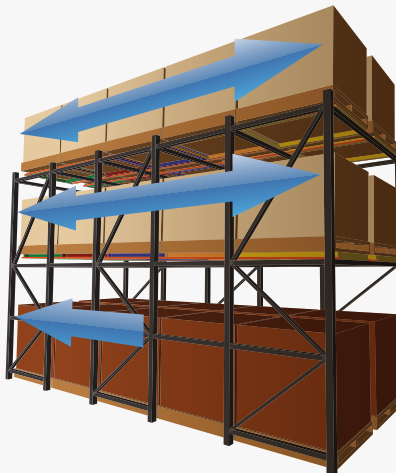
By maximizing space and selectivity, ensuring safety and delivering innovative solutions, Advance pushback fulfills your material handling demands. With over 50 years in the industry, market share leadership, 10,000 installations in operation and our unprecedented 10-year Warranty, the real question is:

Why take a chance with anyone else?

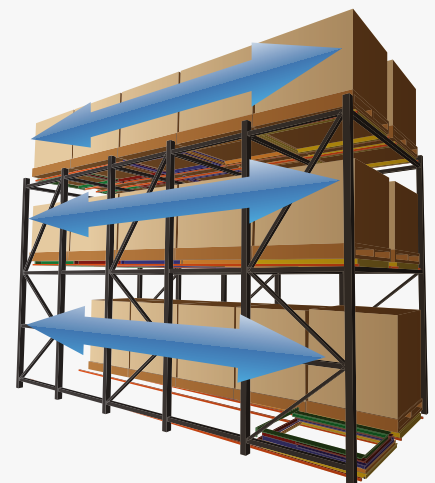
**Pushback with
Drive-In below**



Double Pallet Handling



**Floor Mount
Pushback**





[Trust the Leader. Trust



ADVANCE]



www.advancestorage.com

1.888.478.7422

714.902.9000

**7341 Lincoln Way
Garden Grove, CA 92841**

770.748.4860

**275 North Park Boulevard
Cedartown, GA 30125-6097**

Additional Product Lines

Structural Pallet Rack

Selective

Double Deep Reach

Pick Modules

Drive-In

High Bay Storage

Very Narrow Aisle