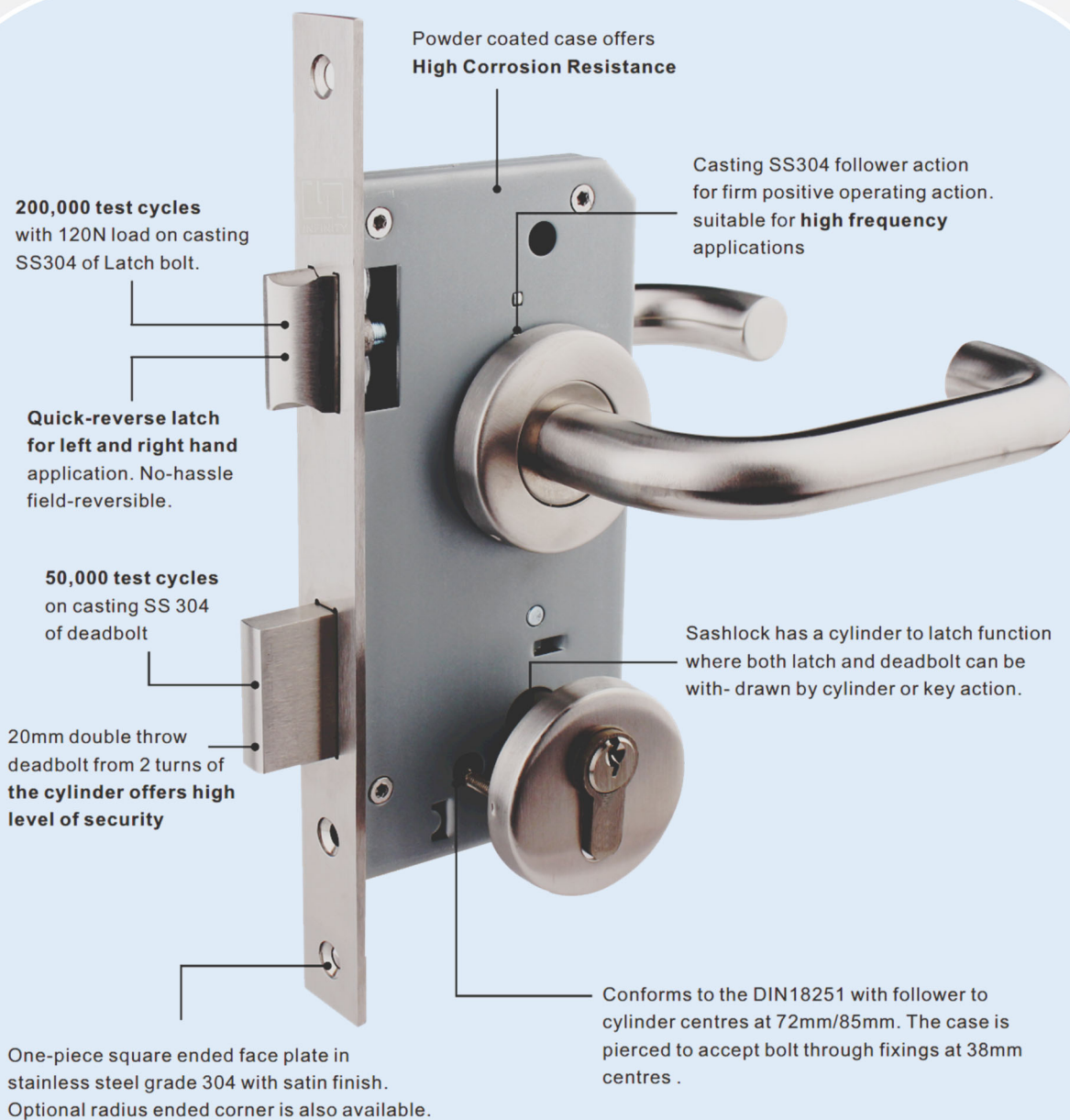
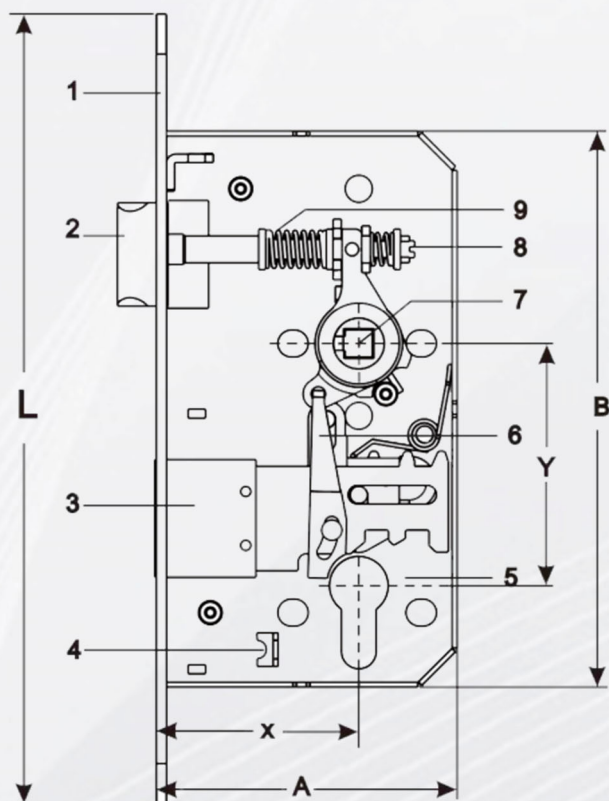


## Locks





1. Forend

2. Latch

3. Dead bolt

4. Screw channel for cylinder

5. Lock case

6. Action-arm

7. Follower

8. Turning device

9. Spring

X. Backset

Y. Distance

A. Lock case width

B. Lock case height

L. Forend length

F. Forend width

### Application for Doors

- Wooden Doors/Timber
- Metal/Steel Doors
- Office Doors
- Hollow Metal Doors
- Security Doors
- Fire-Rated Doors



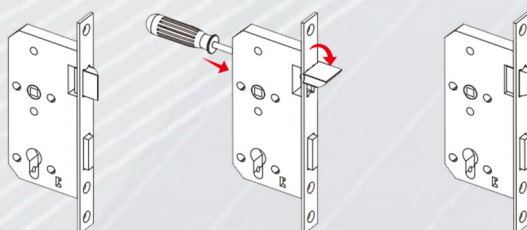
Single Door



Composite Door



Double Door



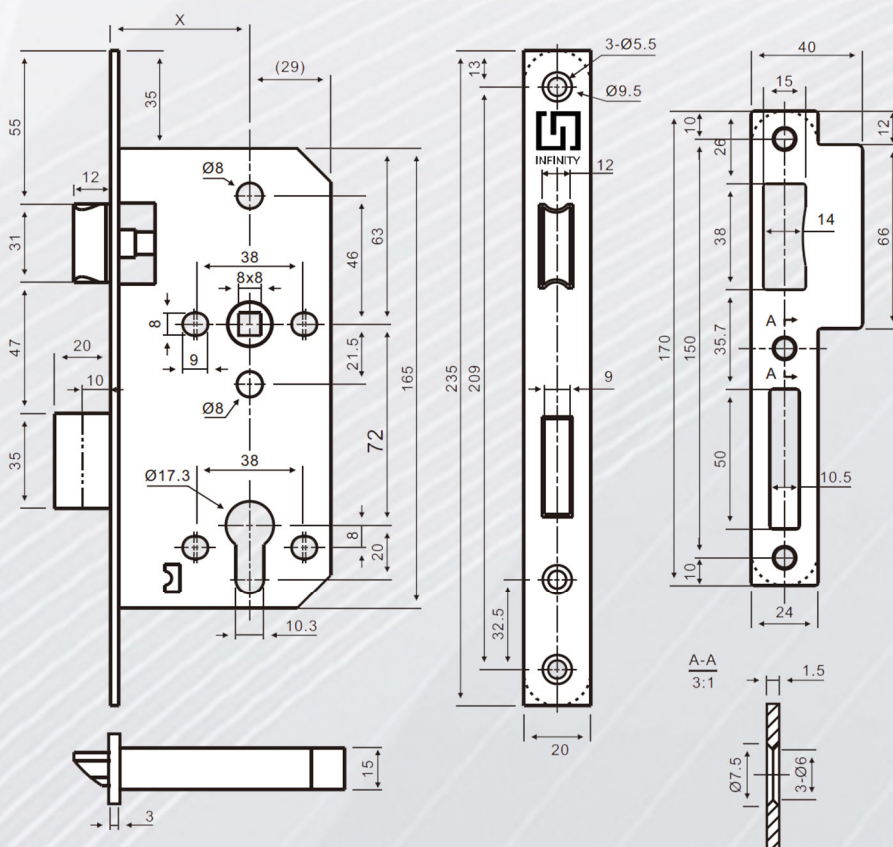
## Sashlock



Function: Latchbolt can be operated by lever handles on either side. Deadbolt thrown and retracted from one or from both sides depending on the type of cylinder installed. Cylinder action will operate both deadbolt and latchbolt. Deadbolt 2-turns.

<b>Art. No.</b>	<b>IS-5572</b> <b>IS-5572R</b>
<b>Compliance</b>	EN12209 / DIN 18251 Grade 3
<b>Backset</b>	55mm, other backset available upon request
<b>Centers</b>	72mm
<b>Material</b>	Solid SUS 304 Latchbolt & Deadbolt, Follower, SUS 304 Forend, Strike Plate
<b>Forend &amp; Strike Plate</b>	Square or Radius
<b>Finish</b>	SSS, PSS, PVD, PB, AB, SB, MB
<b>Application</b>	Entrance door of commercial or residential application
<b>Suitable for Door</b>	Wooden door, Metal door, Fire door, Smoke door, Interior door, Outer door, Swing door etc

Cylinder can withdraw both latch and deadbolt - offers convenience and safety combined with security.



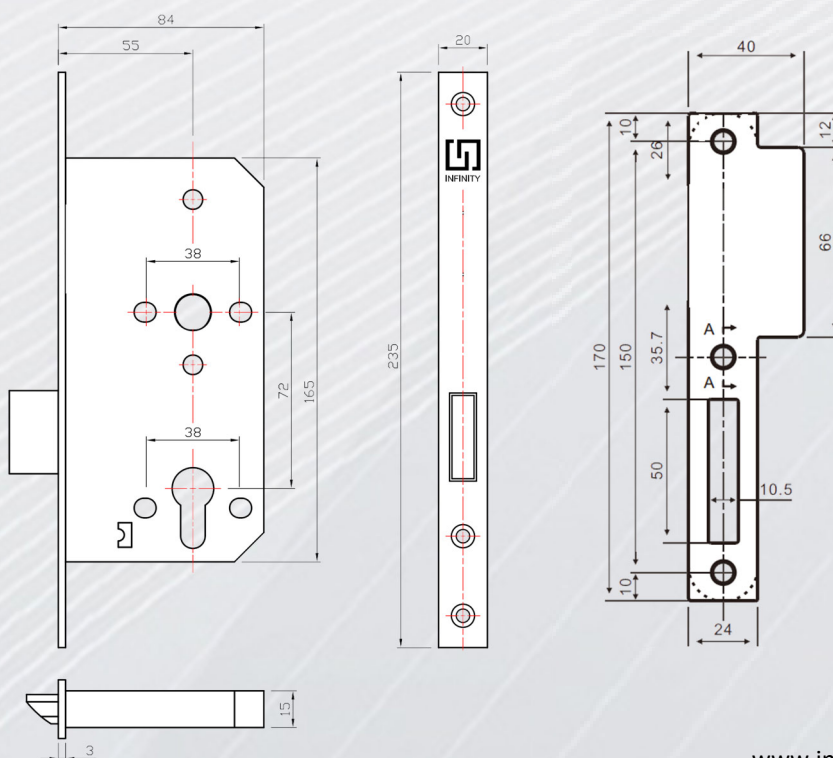
## Deadlock



Function: Deadbolt thrown and retracted from one side or from both sides depending on the type of cylinder installed. Deadbolt 2-turns.

<b>Art. No.</b>	<b>ID-5572</b>
Compliance	EN12209 / DIN 18251 Grade 3
Backset	55mm, other backset available upon request
Centers	72mm
Material	Solid SUS 304 Deadbolt, Follower, SUS 304 Forend, Strike Plate
Forend & Strike Plate	Square or Radius
Finish	SSS, PSS, PVD, PB, AB, SB, MB
Application	Entrance door of commercial or residential application
Suitable for Door	Wooden door, Metal door, Fire door, Smoke door, Interior door, Outer door, Swing door etc

Cylinder can withdraw deadbolt - offers safety combined with security.





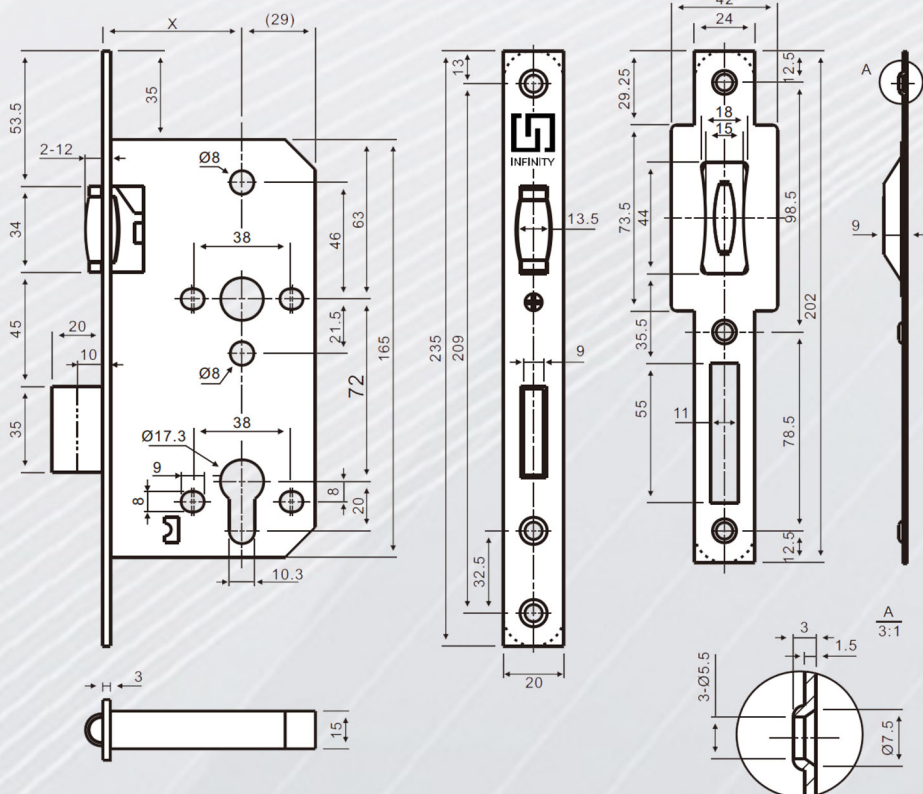
## Roller Lock



Function: Roller bolt can be automatic close on either side. Deadbolt thrown and retracted from one or from both sides depending on the type of cylinder installed. Cylinder action will operate deadbolt . Deadbolt 2-turns.

<b>Art. No.</b>	<b>IR-5572</b>
Compliance	EN12209 / DIN 18251 Grade 3
Backset	55mm, other backset available upon request
Centers	72mm
Material	Solid SUS 304 Rollerbolt & Deadbolt, Follower, SUS 304 Forend, Strike plate
Forend & Strike Plate	Square or Radius
Finish	SSS, PSS, PVD, PB, AB, SB, MB
Application	Entrance door of commercial or residential application
Suitable for Door	Wooden door, Metal door, Fire door, Smoke door, Interior door, Outer door, Swing door etc

Cylinder can withdraw both latch and deadbolt - offers convenience and safety combined with security.



## Magnetic Lock



Function: Roller bolt can be automatic close on either side. Deadbolt thrown and retracted from one or from both sides depending on the type of cylinder installed. Cylinder action will operate deadbolt . Deadbolt 2-turns.

<b>Art. No.</b>	<b>IML-5572</b>
Backset	55mm
Centers	72mm
Material	Solid SUS 304 Rollerbolt & Deadbolt, Follower, SUS 304 Forend, Strike plate
Forend & Strike Plate	Radius
Finish	SSS, PSS, PVD, PB, AB, SB, MB
Application	Entrance door of commercial or residential application
Suitable for Door	Wooden door, Metal door, Fire door, Smoke door, Interior door, Outer door, Swing door etc

Cylinder can withdraw both latch and deadbolt - offers convenience and safety combined with security.

