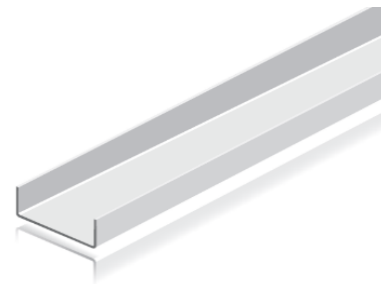


Main Channel

Technical Datasheet



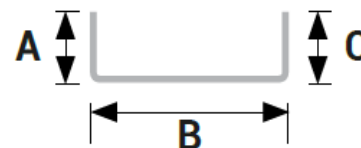
Description

Main Channel sections are cold roll formed from zinc coated steel strip is the primary member (carrying Channel) for Conventional Ceiling metal framework. This is suspended from the roof with wire hanger, adjustment clip and channel hanger.

Primary Data

Product:	Main Channel
Standard Compliance:	BS EN 10346:2009 (formerly BS EN 10142:1991)
Manufacturing Standards:	ASTM C645/C645M
Ceiling System:	Applicable for Conventional Ceiling
Coating Type:	Z120 (G40)
	ASTM A653/A653M
Material:	Galvanized Steel

Technical Data



Reference	Dimensions (mm)			Thickness (mm)	Length (mm)	Dimensions (inch)			Thickness (Gauge)	Length (ft.)	Material
	A	B	C			A	B	C			
MC25G	12	38	12	0.5	3048	15/32"	1 1/2"	15/32"	25	10'	Galvanized
MC20G	12	38	12	0.9	3048	15/32"	1 1/2"	15/32"	20	10'	Galvanized
MC16G	12	38	12	1.32	3048	15/32"	1 1/2"	15/32"	16	10'	Galvanized

Thicknesses and custom lengths are available upon request.